

Road 177  
Zane Tap

staked 25' from & for 50' Road.

Stakes 1-3-5-7

60' - Zane Tap.

Commissioners Journal Vol. 6 Page 219

" " " 6 " 260

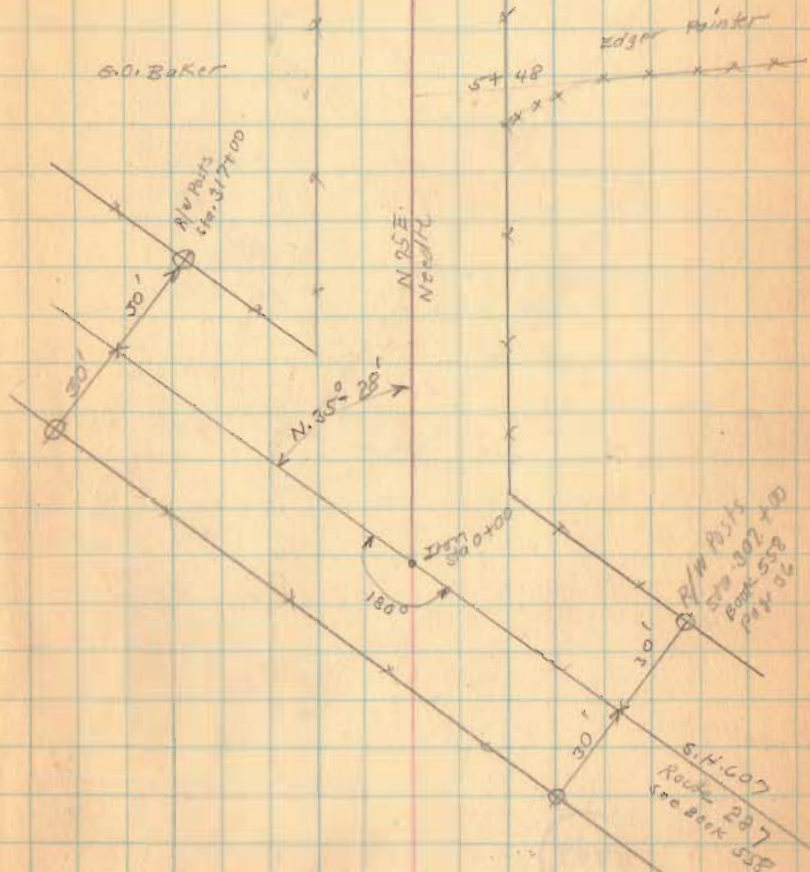
June. 9 - 1841

1749

INDEXED ON MAP

Oct. 1-1936  
C.C. /  
F. Wright  
G. P. S. H.

32



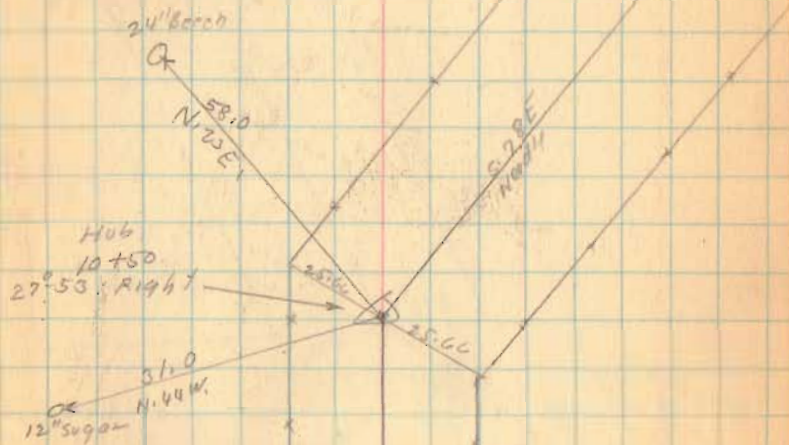
Road 177

1749

INDEXED ON MAP

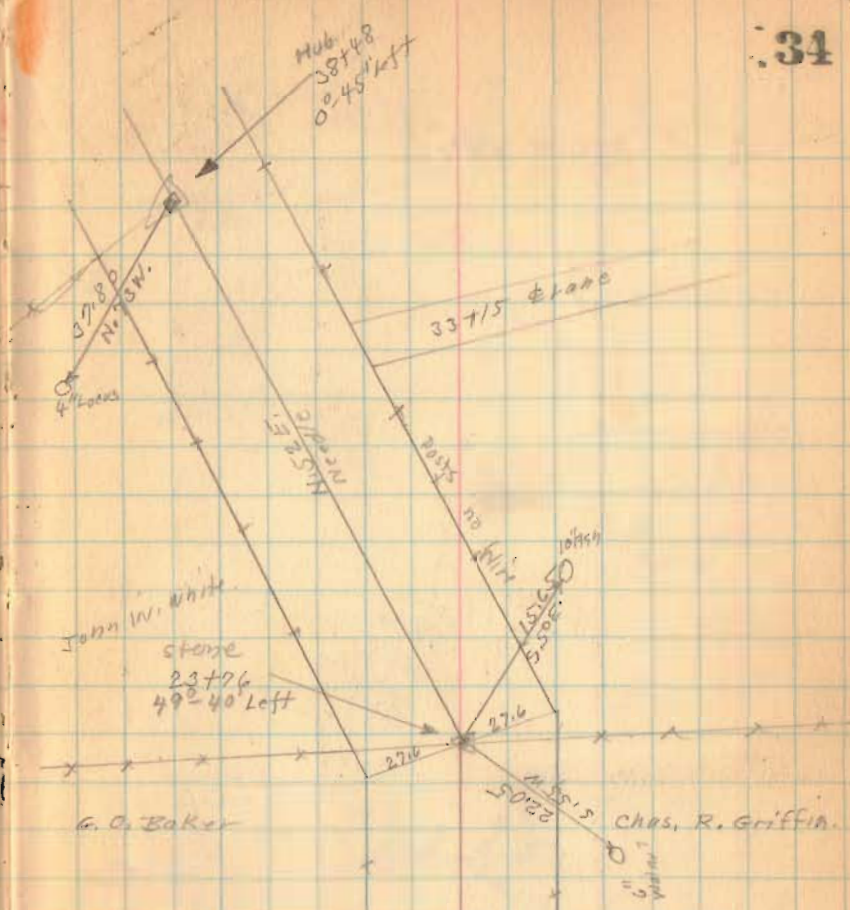
10-1-36

33



Road 177

2 38+48



1749

INDEXED ON MAP

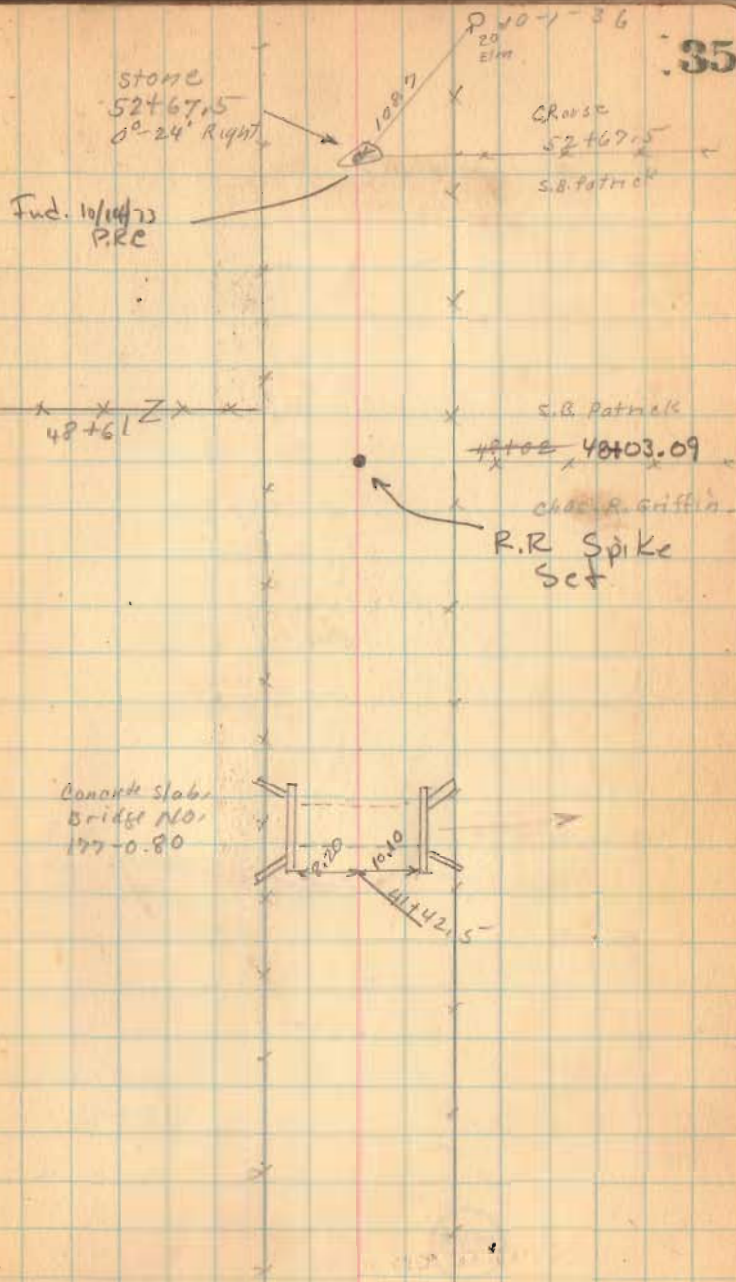
Road 177

4802  
4142  
660

1749

INDEXED ON MAP

35



Oct. 7 - 1936  
cloudy  
F. Wright  
G. Pusoy

36

Road, 177

Gl + 11  
stone found ✓  
No. Angle

small  
Eyes  
J. J. McCoer

20 Gl + 11

C. Rouse

Sarah Patrick

CO + 29

J. W. White

1749

INDEXED ON MAP

Road 177

Note: 11/17/73

- A. 12" Elm ref. gone.
- B. PK in side of 30" oak

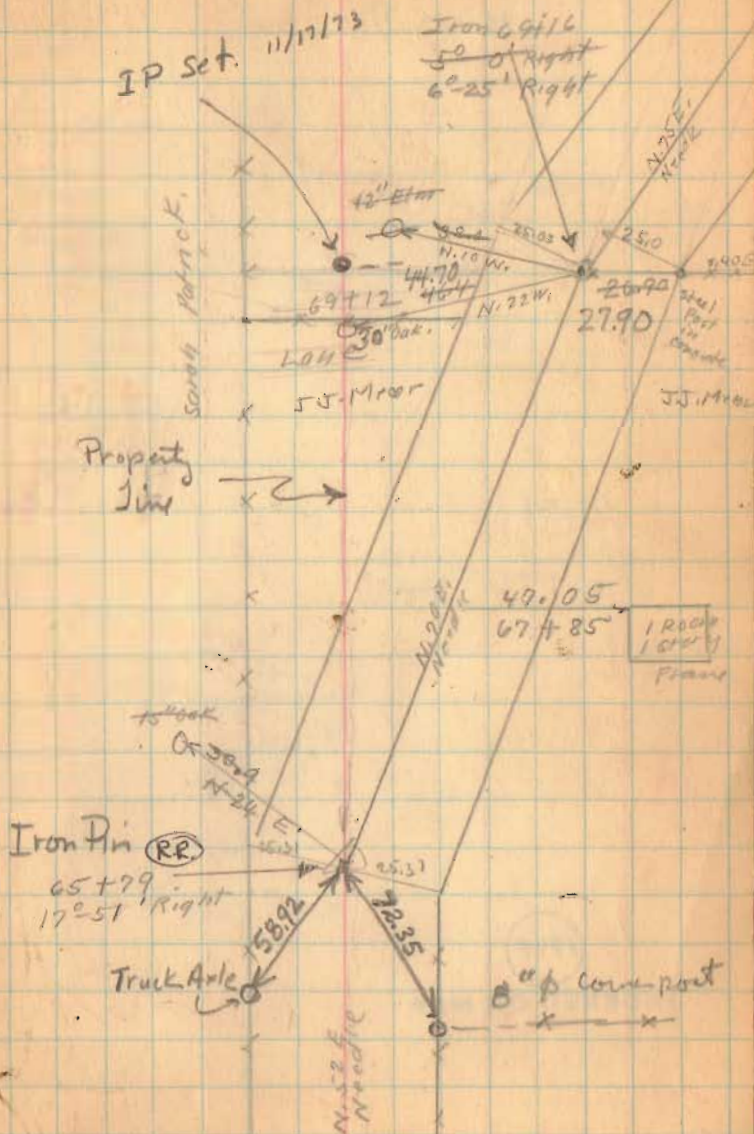
65+79 I.P. just off  
north edge of road  
P.R.C. 11/17/73

1749

INDEXED ON MAP

Oct. 9-1936  
F. Wright  
& P. Perry

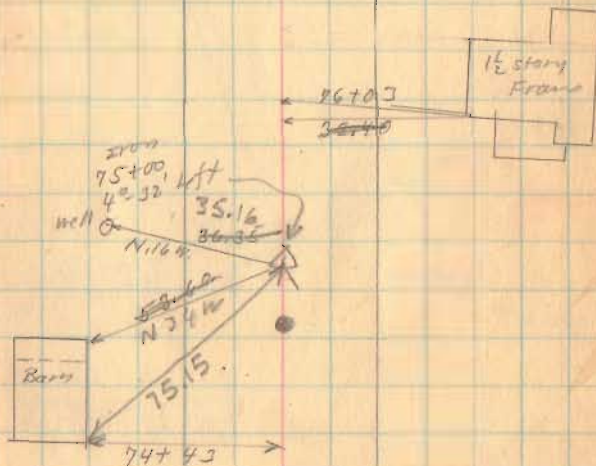
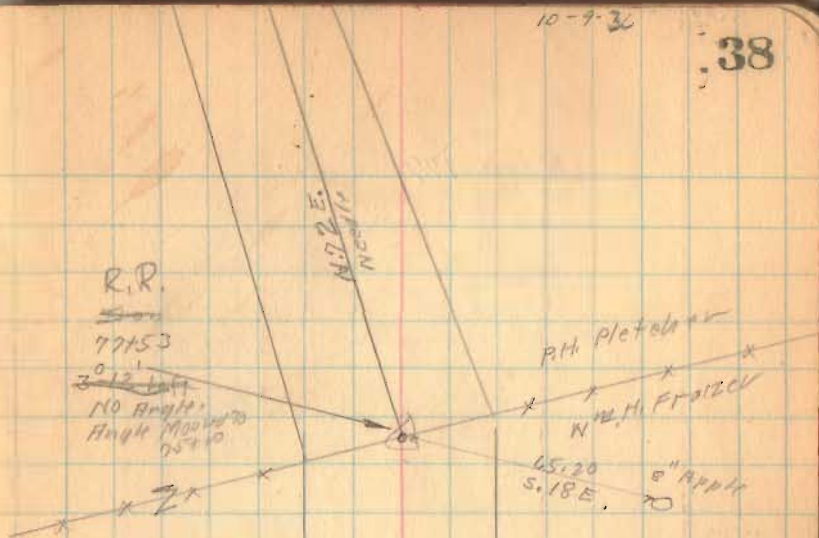
37



Flood. 177

10-9-36

38



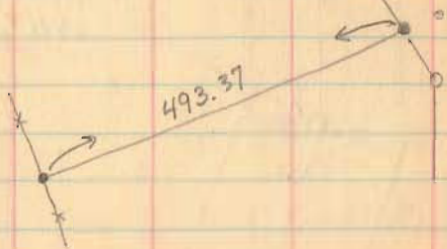
1749

INDEXED ON MAP

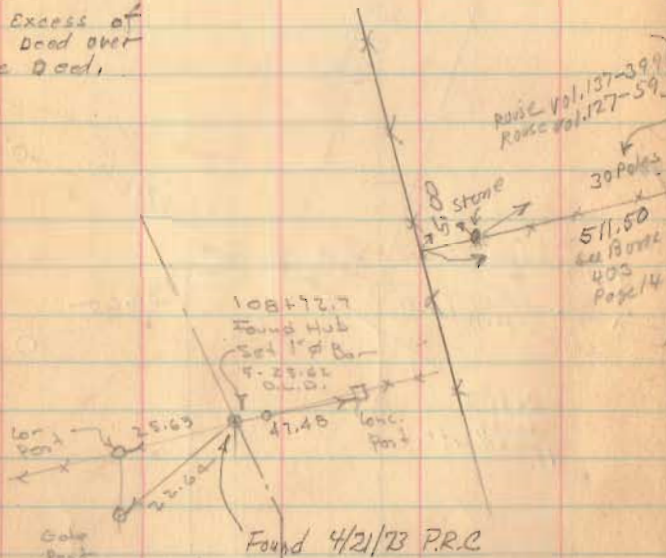




Road 177



22.7 Excess of Smith dead over Rouse dead,

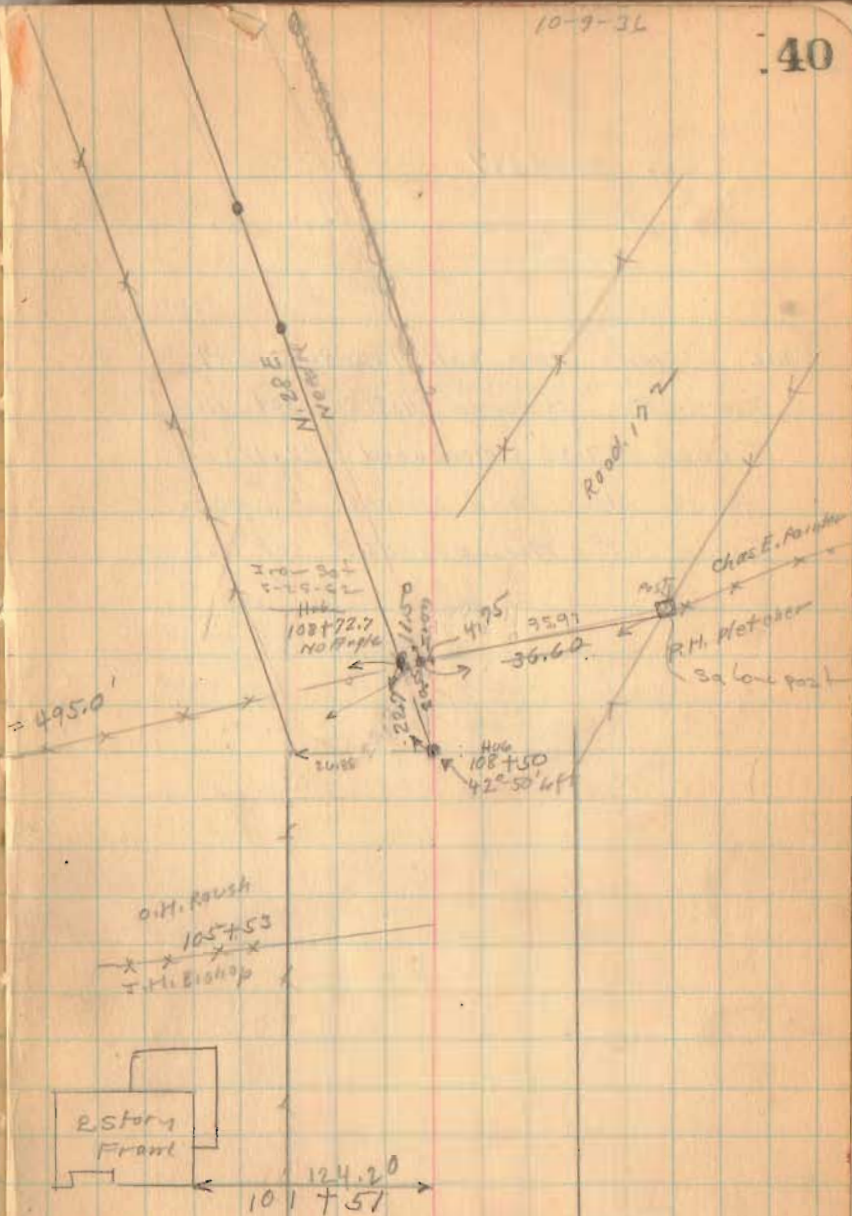


1749

INDEXED ON MAP

10-9-36

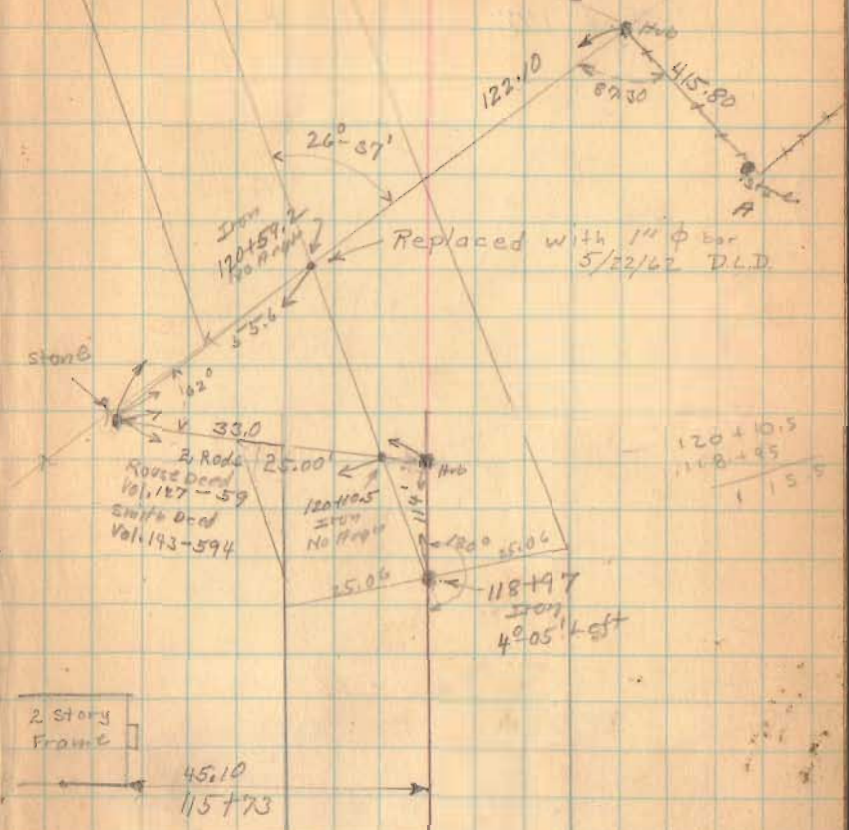
40



Road 177

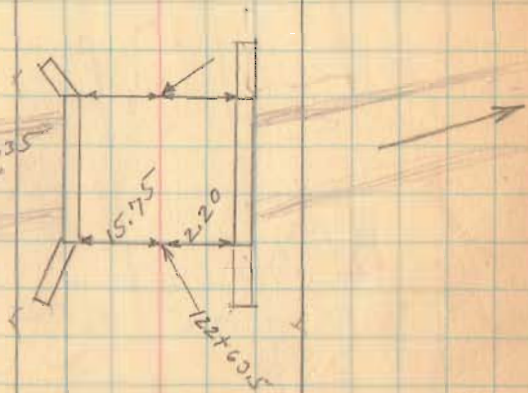
See Smith Road Vol. 143 Page 594  
Found A Measured 415.80 set Hub.  
Turned  $87^{\circ}30'$  Measured 122.10  
found stone and pieces of creek.  
Turned  $62^{\circ}$  Measured 33.0' set Hub

Oct. 21-1936  
Warin  
F.W.H. 1917  
G. B. Co. 4  
Name Sta. 121+38  
P.O. 500/2



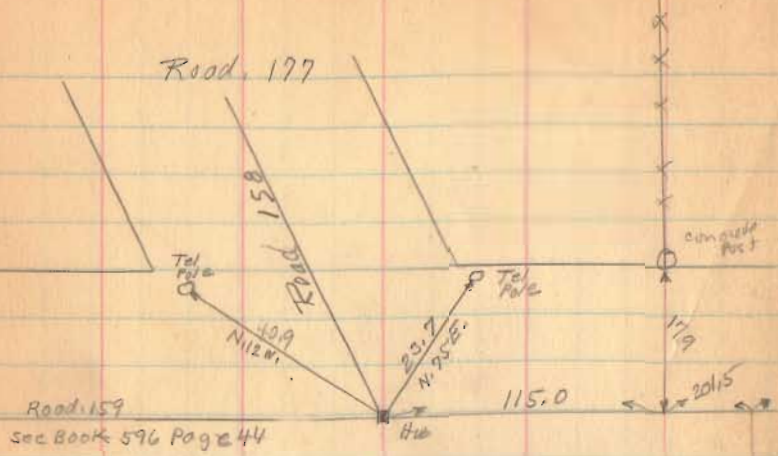
1749

Road 177

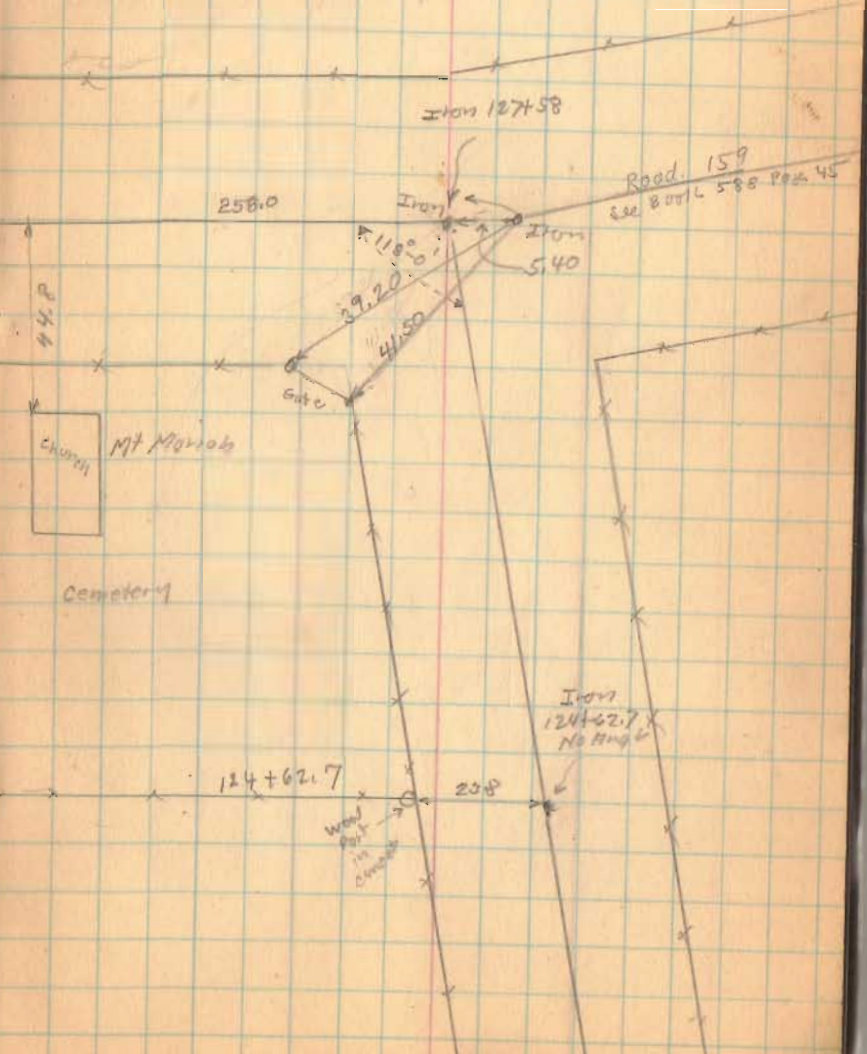
Bridg 177-235  
concrete stake

1749

INDEXED ON MAP



Length 12758 Feet  
 Length 2.416287 Miles  
 Length 2.42 Miles



1749

INDEXED ON MAP