

Road 153 Zane Twp.

Width 60' - Comm. Sr. # P.

Searched for stones at all land lines and X-Roads. No markers shown.

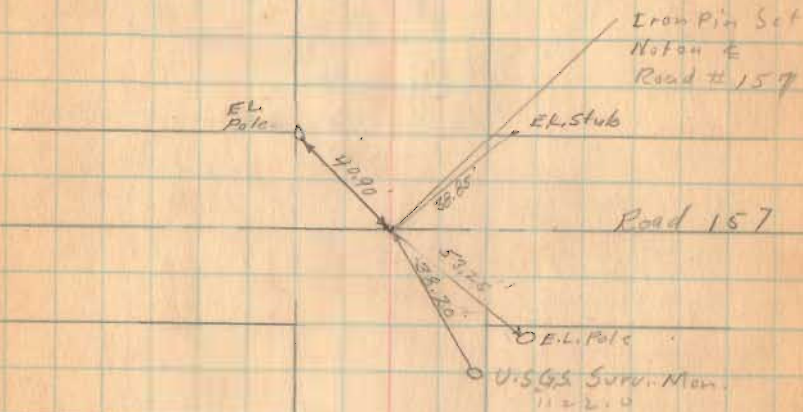
Road Record shows road on straight line from Middleburg to near Road 277.

Line of Street in Middleburg was produced South to set stakes along W. side Road 153 for E.L. Pole line.

Straight line produced from Middleburg puts 4 feet for south. Iron pin set at Cemetery E. line & angle made there to make line straight to X-Roads

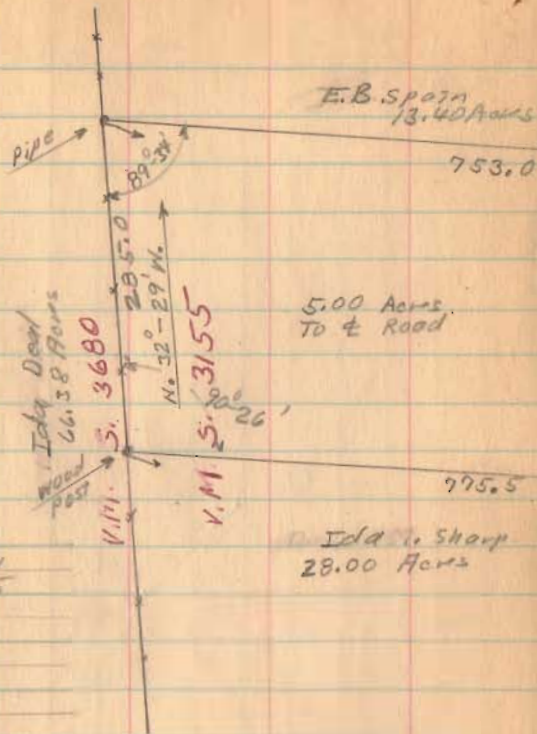
August 8, 1893
G. W. Gas
M. Jones
R. Reed
E. Love

67



INDEXED ON MAP
1824

Rd 153

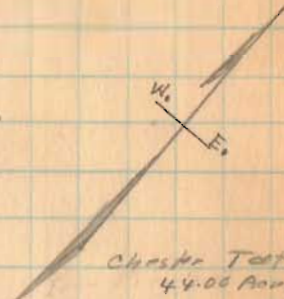
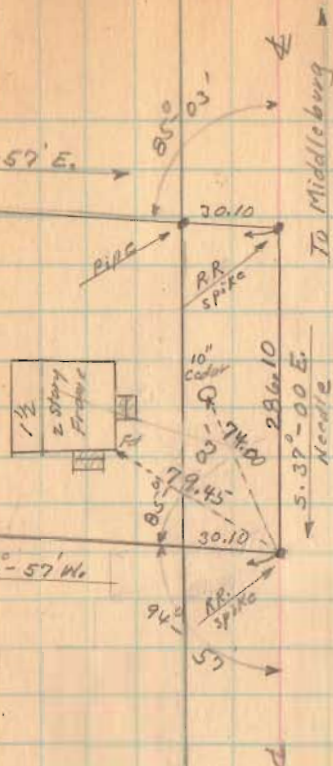


Spain survey
Nov. 12, 1955
Wagon
F. F. Wright
G. W. Wilgus

Icky Deal
28.00 Acres

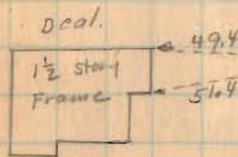
775.5

S. 57° - 57' W.



Chester Mergers
113.00 Acres

1829



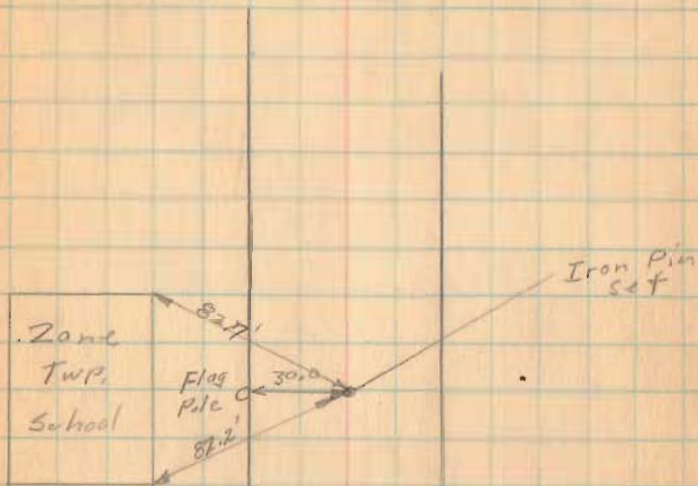
INDEXED ON MAP
Iron set.
Found 11-12-55

Cedar
up
29.30
11-12-55

Pl 153

9.8-40

67



1827

INDEXED ON MAP

