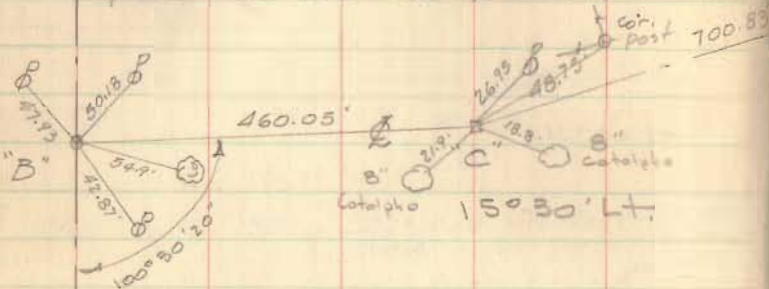


FB 703

SURVEY OF C.H. 157

ZANE TOWNSHIP

R/W stated for Allen Devault
from "B" to "D" = 60' & "D" to "H" = 30'

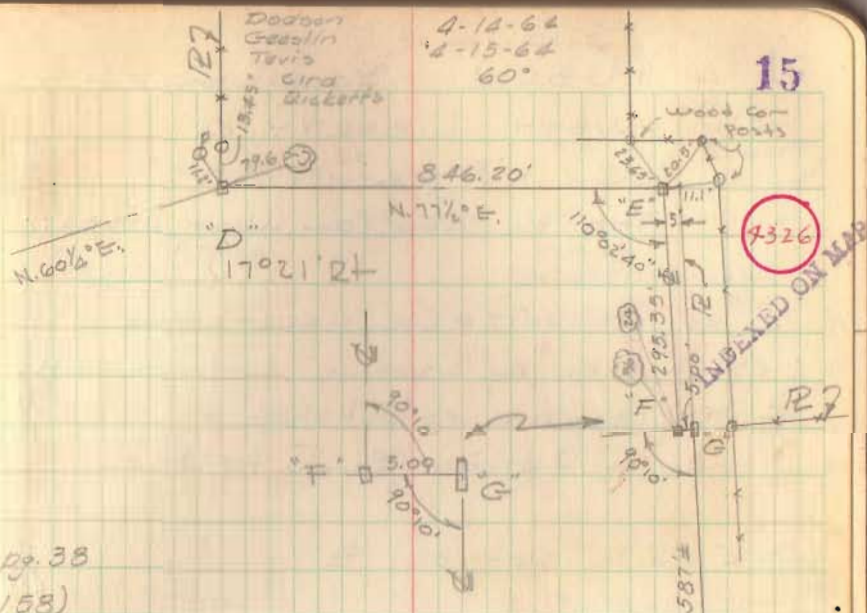
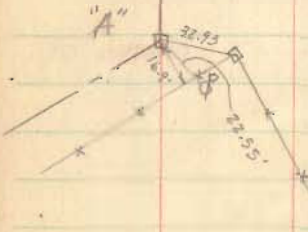


- A = 1" ϕ bar set from witnesses Blk 643,
- B = Iron found Sta. 38+58.5 (C.H. 158)
- C = Hub found - See Blk 418, pg. 33,
- D = Hub found "
- E = 1" ϕ Bar set
- F = 1" ϕ Bar set - 5.00' W. of "G"
- G = Stone found @ surface 4" \times 12"
- H = R Devault & Chamberlain
- I = Wood corner post, used for

R/W WIDTH

- "B to D" = 60'
- "D to H" = 30'
- "H to I" = 60'

See Road Record No. 1, pg. 115



pg. 38
158

Set 1" ϕ Bar (1' N. of S. edge of pmt.)
Set 1" ϕ Bar

R Devault
Chamberlain

B 157-0.60

centerline

- "F" - 36" Cotalpha N.W. 14.4
24" " " 35.1
Cor. post East 17.50'
- "G" - 36" Cotalpha N.W. 20.0'
24" " " 37.4'
- Cor. post East 12.50'

"I" on post

Long