



Lee Surveying and Mapping Co.



Farm Surveys • Lot Surveys • Topography • Subdivisions • Construction Layout

143 EAST COLUMBUS AVENUE
BELLEFONTAINE, OHIO 43311

(513) 593-7335

JEFFREY I. LEE, P.S.

AKERS 5.439 ACRES

Lying in Virginia Military Surveys 3159 and 3161, Zane Township, Logan County, Ohio.

Being out of the Fern Akers original 21.0 acre tract as deeded and described in Official Record 198, Page 431 of the Logan County Records of Deeds and being more particularly described as follows:

Beginning at a 3/4 inch square head bolt found at the intersection of the center-line of County Highway 153 and the southerly line of Virginia Military Survey 3161. The said bolt also marks the east corner of the said 21.0 acre tract.

THENCE, with the northerly line of the Doris Jean Dixon 177.05 acre tract (Vol. 293, Pg. 69) and the southerly line of the said 21.0 acre tract and Virginia Military Surveys 3161 and 3159, S 56°-45'-51" W, a distance of 899.25 feet to a 5/8 inch iron rod set.

THENCE, N 8°-49'-47" E, a distance of 539.05 feet to a 5/8 inch iron rod set.

THENCE, S 81°-10'-13" E, a distance of 183.84 feet to a 5/8 inch iron rod set.

THENCE, N 8°-49'-47" E, a distance of 259.13 feet to a railroad spike set on the center-line of County Highway 153.

THENCE, with the center-line of County Highway 153 (60 feet wide), S 59°-13'-00" E, a distance of 429.62 feet to a railroad spike found.

THENCE, with the center-line of County Highway 153, S 58°-48'-31" E, a distance of 92.21 feet to the point of beginning.

Containing 5.439 acres of which 1.776 acres are in Virginia Military Survey 3159 and 3.663 acres are in Virginia Military Survey 3161. 0.350 acre is within the highway right-of-way.

The basis for bearings is based upon the center-line of County Highway 153 being S 59°-13'-00" E, and all other bearings are from angles and distances measured in a field survey by Lee Surveying and Mapping Company on June 1, 1994.

Description prepared by:



ORIGINAL STAMP IN GREEN

Jeffrey I. Lee
Jeffrey I. Lee
Professional Surveyor 6359
June 14, 1994

L 2184



Received 6-15-94
51 960



Lee Surveying and Mapping Co.



Farm Surveys • Lot Surveys • Topography • Subdivisions • Construction Layout

143 EAST COLUMBUS AVENUE
BELLEFONTAINE, OHIO 43311

(513) 593-7335

JEFFREY I. LEE, P.S.

AKERS 1.250 ACRES

Lying in Virginia Military Surveys 3159 and 3161, Zane Township, Logan County, Ohio.

Being out of the Fern Akers original 21.0 acre tract as deeded and described in Official Record 198, Page 431 of the Logan County Records of Deeds and being more particularly described as follows:

Beginning at a 3/4 inch square head bolt found at the intersection of the center-line of County Highway 153 and the southerly line of Virginia Military Survey 3161. The said bolt also marks the east corner of the said 21.0 acre tract.

THENCE, with the center-line of County Highway 153, N 58°-48'-31" W, a distance of 92.21 feet to a railroad spike found.

THENCE, with the center-line of County Highway 153, N 59°-13'-00" W, a distance of 429.62 feet to a railroad spike set at the TRUE POINT OF BEGINNING.

THENCE, S 8°-49'-47" W, a distance of 259.13 feet to a 5/8 inch iron rod set.

THENCE, N 81°-10'-13" W, a distance of 183.84 feet to a 5/8 inch iron rod set.

THENCE, N 8°-49'-47" E, a distance of 333.23 feet to a railroad spike set on the center-line of County Highway 153.

THENCE, with the center-line of County Highway 153 (60 feet wide), S 59°-13'-00" E, a distance of 198.21 feet to the point of beginning.

The basis for bearings is based upon the center-line of County Highway 153 being S 59°-13'-00" E, and all other bearings are from angles and distances measured in a field survey by Lee Surveying and Mapping Company on June 1, 1994.

Containing 1.250 acres of which 0.004 acre is in Virginia Military Survey 3159 and 1.246 acres are in Virginia Military Survey 3161. 0.137 acre is within the highway right-of-way.

Description prepared by:

Jeffrey I. Lee
Professional Surveyor 6359
June 14, 1994



L 2184

INDEXED ON MAP
6/28/97 1D-2



Lee Surveying and Mapping Co.



Farm Surveys • Lot Surveys • Topography • Subdivisions • Construction Layout

143 EAST COLUMBUS AVENUE
BELLEFONTAINE, OHIO 43311

(513) 593-7335

JEFFREY I. LEE, P.S.

AKERS 4.258 ACRES

Lying in Virginia Military Surveys 3159 and 3161, Zane Township, Logan County, Ohio.

Being out of the Fern Akers original 21.0 acre tract as deeded and described in Official Record 198, Page 431 of the Logan County Records of Deeds and being more particularly described as follows:

Beginning at a 3/4 inch square head bolt found at the intersection of the center-line of County Highway 153 and the southerly line of Virginia Military Survey 3161. The said bolt also marks the east corner of the said 21.0 acre tract.

THENCE, with the northerly line of the Doris Jean Dixon 177.05 acre tract (Vol. 293, Pg. 69) and the southerly lines of the said 21.0 acre tract and Virginia Military Surveys 3161 and 3159, S 56°-45'-51" W, a distance of 899.25 feet to a 5/8 inch iron rod set at the TRUE POINT OF BEGINNING.

THENCE, with the southerly line of the said 21.0 acre tract and Virginia Military Survey 3159 and the northerly line of the said 177.05 acre tract, S 56°-45'-51" W, a distance of 251.40 feet to a 5/8 inch iron rod set.

THENCE, with the east line of the Jimmy W. Baker 10.05 acre tract (O.R. 141, Pg. 206), N 8°-50'-00" E, a distance of 1115.91 feet to a railroad spike found on the center-line of County Highway 153.


THENCE, with the center-line of County Highway 153 (60 feet wide), S 59°-13'-01" E, a distance of 201.15 feet to a railroad spike set.

THENCE, S 8°-49'-47" W, a distance of 872.28 feet to the point of beginning.

Containing 4.258 acres of which 3.195 acres are in Virginia Military Survey 3159 and 1.063 acres are in Virginia Military Survey 3161. 0.139 acre is within the highway right-of-way.

The basis for bearings is based upon the center-line of County Highway 153 being S 59°-13'-00" E, and all other bearings are from angles and distances are measured in a field survey by Lee Surveying and Mapping Company on June 1, 1994.

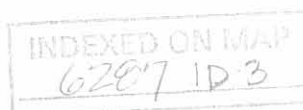
Description prepared by:

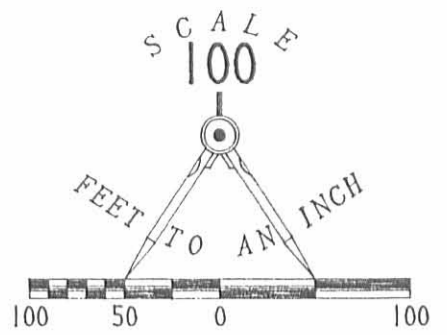

Jeffrey I. Lee
Professional Surveyor 6359
June 14, 1994



L 2184

ORIGINAL SET IN GREEN





LEGEND

- 5/8" IRON ROD SET
- ⊕ RAILROAD SPIKE SET
- ⊗ RAILROAD SPIKE FOUND
- ⊠ BOLT W/ 3/4" SQUARE HEAD FOUND

JIMMY W. BAKER
10.05 ACRES
O.R. 141, PG. 206

DORIS JEAN DIXON
177.05 ACRES
VOL. 293, PG. 69

SURVEY OF 3 TRACTS OUT OF THE
FERN AKERS ORIGINAL 21 ACRE TRACT
OFFICIAL RECORD 198, PAGE 431
VIRGINIA MILITARY SURVEYS 3159 AND 3161
ZANE TOWNSHIP
LOGAN COUNTY, OHIO

REFERENCES:

1. LOGAN COUNTY ENGINEERS F.B. 597, PG. 5 AND F.B. 573, PG. 50.
2. LOGAN COUNTY ENGINEERS MAP ROOM, DRAWER R, FILE NUMBERS 5499, 6287, AND 7039.

SURVEYED BY:

JEFFREY I. LEE
PROFESSIONAL SURVEYOR 6359
JUNE 1, 1994



LEE SURVEYING & MAPPING CO.
143 East Columbus Avenue
BELLEFONTAINE, OHIO 43311
(513) 593-7335

ORIGINAL STAMP IN GREEN

D 240 BAKERS

L-2184-3

INDEXED ON MAP
6287 1P

2 WORKING DAYS
BEFORE YOU DIG
CALL TOLL FREE **800-362-2764**
OHIO UTILITIES PROTECTION SERVICE.

Deed Description - 10.05 Acres out of Gene and Fern Aker's 21.00 Acres, Zane Twp. Logan Co. Ohio

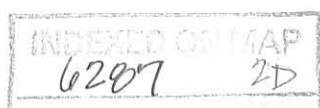
Situated in the Township of Zane, in the County of Logan, and State of Ohio, Being in Virginia Military Surveys #3161 and # 3159, more particularly described as follows:

Beginning at a railroad spike set in the center of Logan County Road # 153 (also known as the Zanesfield and Middleburg Pike) at Station 126+42 as shown on Logan County Engineer's Field Book #573, said point also being the Northwest corner of Gene and Fern Aker's 21.00 acres, thence with the center of said Logan County Road #153 South 54 Degrees 00 Minutes East 58.00 feet to a railroad spike set at station 127+00; thence continuing with the center of said road South 59 Degrees 13 Minutes East 298.00 feet to a railroad spike; thence South 8 Degrees 50 Minutes West 1110.73 feet, passing an iron pipe set on the road right of way at 32.34 feet, to an iron pipe; thence with a line fence South 56 Degrees 50 Minutes West 441.37 feet to an iron pipe set beside a corner post; thence with said Aker's west line North 8 Degrees 50 Minutes East 1543.93 feet, passing an iron pipe set on the right of way of said road #153 at 1510.22 feet, to the point of beginning, containing 10.05 acres, more or less, 1.50 acres being in V.M.S. 3161 and 8.55 acres being in V.M.S. 3159, out of Gene and Fern Aker's 21.00 acres as recorded in Volume 302 page 436 of the Logan County Recorder's Deed Records.

Surveyed Oct. 20, 1973
By Larry E. Blosser
SIT # 1199

Checked By:

Daniel E. Millett, P.S.
Rec. Sur. No. 5402



PAUL J. HALL

COUNTY ROAD 153

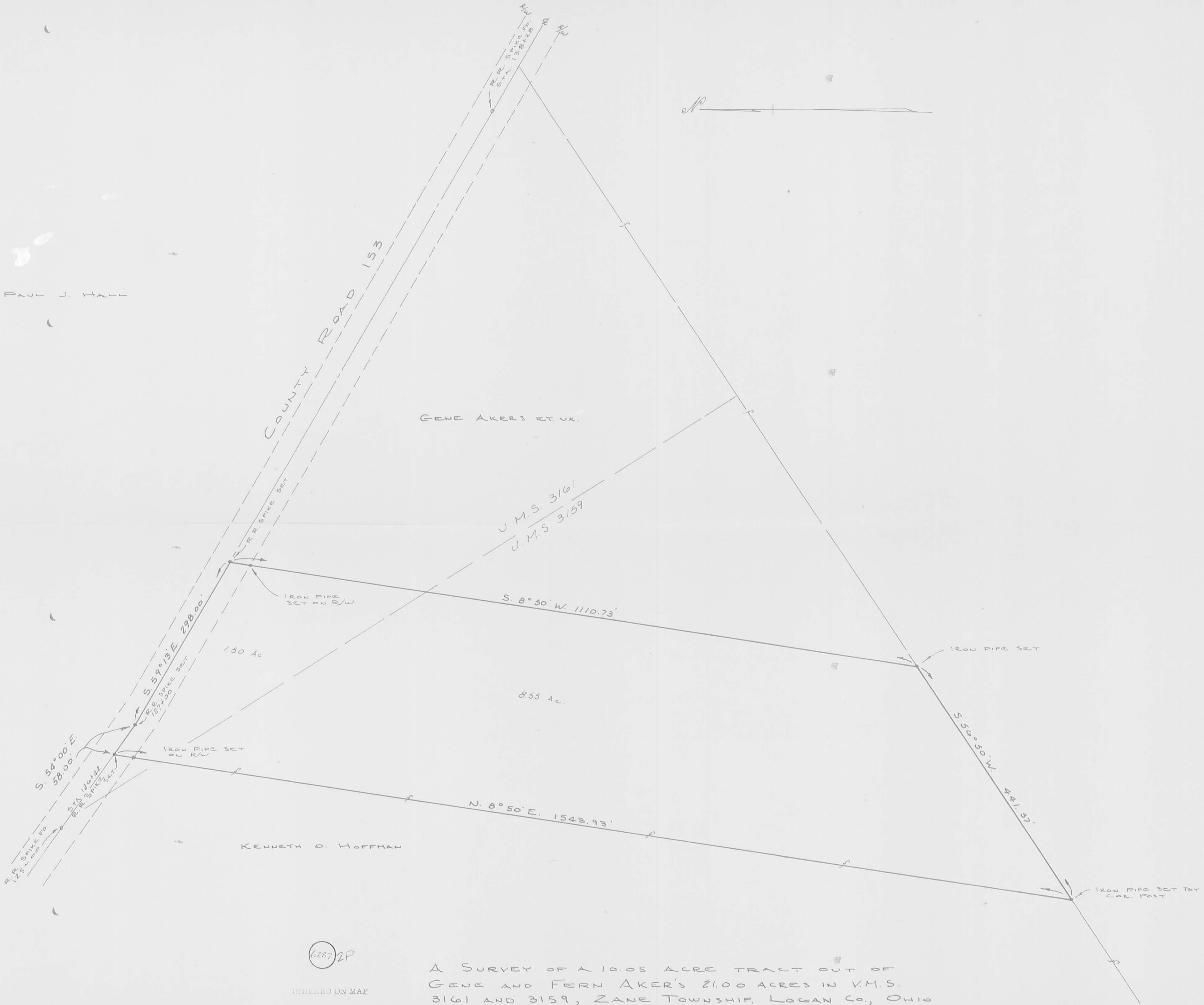
GENE AKERS ET. UX.

J.M.S. 3161
J.M.S. 3159

1.50 Ac

8.55 Ac

KENNETH O. HOFFMAN



6287 2P

INDEXED ON MAP

A SURVEY OF A 10.05 ACRE TRACT OUT OF
 GENE AND FERN AKER'S 21.00 ACRES IN V.M.S.
 3161 AND 3159, ZANE TOWNSHIP, LOGAN CO., OHIO
 SURVEYED OCT. 20, 1973
 BY: LARRY E. BLOSSER SIT #1199
 CHECKED BY: DANIEL E. GILBERT, P.S. REG. SUR. No. 5702

SCALE 1"=100'