

Received 9-4-85 OK E.C.P. Map 153-00

Lee Surveying and Mapping Co.



Farm Surveys • Lot Surveys • Topography • Subdivisions • Construction Layout

855 EAST SANDUSKY AVENUE
BELLEFONTAINE, OHIO 43311

(513) 593-5780

CLAYTON M. LEE, P.S.
JEFFREY I. LEE, P.S.

CROWDER TO OLIVE

Lying in V.M.S. 4697, Zane Township, Logan County, Ohio.

Being off the east side of that 79.43 acres in the name of Mearl Crowder (D.V. 299, Page 260) and being more particularly described as follows:

Beginning at a 1" x 6" screw spike set at an angle in the center-line of Township Road 160 marking the southeast corner of the said 79.43 acres and being on the east line of V.M.S. 4697.

THENCE, with the said center-line of Township Road 160, the following 2 bearings and distances:

S 69°-35' W, 560.74 feet to a 1" x 6" screw spike.

S 60°-15' W, 300.00 feet to a 1" x 6" screw spike.

THENCE, through the said 79.43 acres, with a fence line and a fence line extended, N 32°-02' W, a distance of 1534.18 feet to a 5/8" iron rod set on the grantor's north line, passing a 5/8" iron rod set at 20.02 feet.

THENCE, with said north line and fence line, the same being the south line of John Slemmons 101.86 acre tract (Volume 332, Page 202), N 57°-59'-10" E, a distance of 871.70 feet to a 5/8" iron rod set at the northeast corner of a large corner post at the grantor's northeast corner, the same being the Slemmons southeast corner, being on the east line of V.M.S. 4697 and on the west line of the Thomas Chamberlain lands.

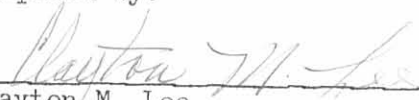
THENCE, with said Chamberlain west line, S 31°-15' E, a distance of 1658.90 feet to the point of beginning.

Containing 31.235 acres of which 20.235 acres are in the Benjamin Logan School District and 11.00 acres are in the Triad School District.

TRACT BREAKDOWN

11.00 Ac. out of 21.29 Ac. Tract 1
8.635 Ac. out of 25 Ac. Tract 2
1.11 Ac. out of 3.14 Ac. Tract 3
10.49 Ac. out of 30 Ac. Tract 4
=31.235 Ac.

Prepared by:


Clayton M. Lee
Professional Surveyor No. 6181
September 4, 1985

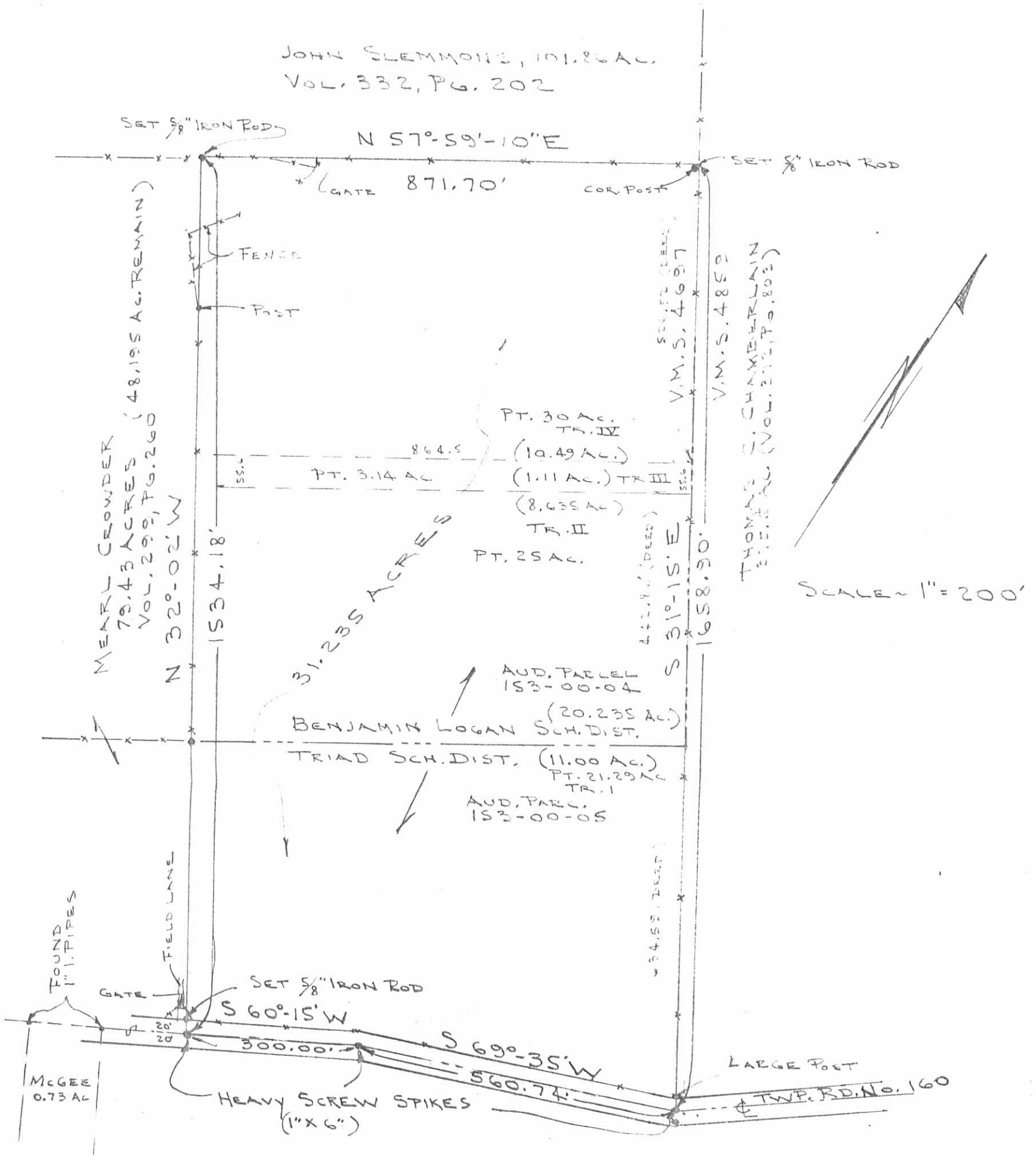
This description prepared from an actual field survey.

INDEXED ON MAP
7427 ID



ORIGINAL STAMP IN GREEN

JOHN SLEMMON, 101.86 AC.
VOL. 332, PG. 202



CROWDER TO OLIVE
SURVEY OF 31.235 ACRES
V.M.S. 4697, ZANE TOWNSHIP
LOGAN COUNTY, OHIO

BREAKDOWN

11.00 Ac. OUT OF	21.29 Ac. TRACT 1	10.29
8.635 Ac. "	25 Ac. TRACT 2	16.365
1.11 Ac. "	3.14 Ac. TRACT 3	2.03
10.49 Ac. "	30 Ac. TRACT 4	19.51
= 31.235 Ac.		

INDEXED ON MAP
7427 IP

By: *Clayton M. Lee*
CLAYTON M. LEE ORIGINAL STAMP IN GREEN
PROF. SURVEYOR 6181
SEPT. 3, 1985

