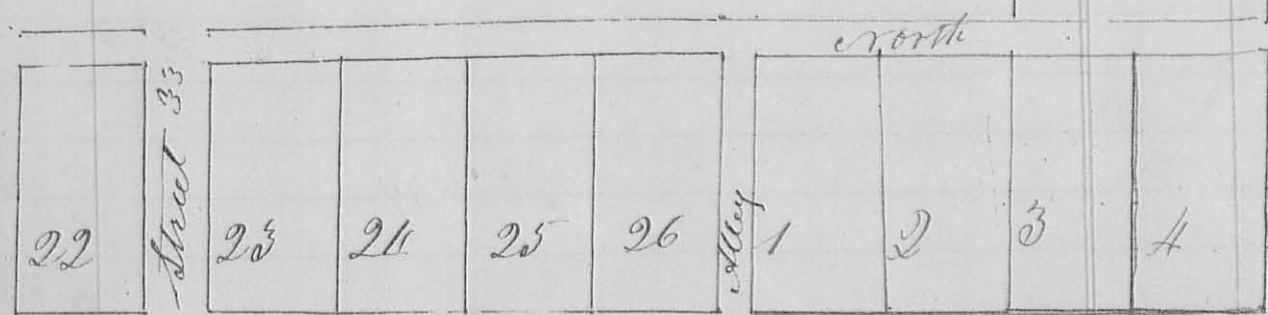


A plat of the town of Middle

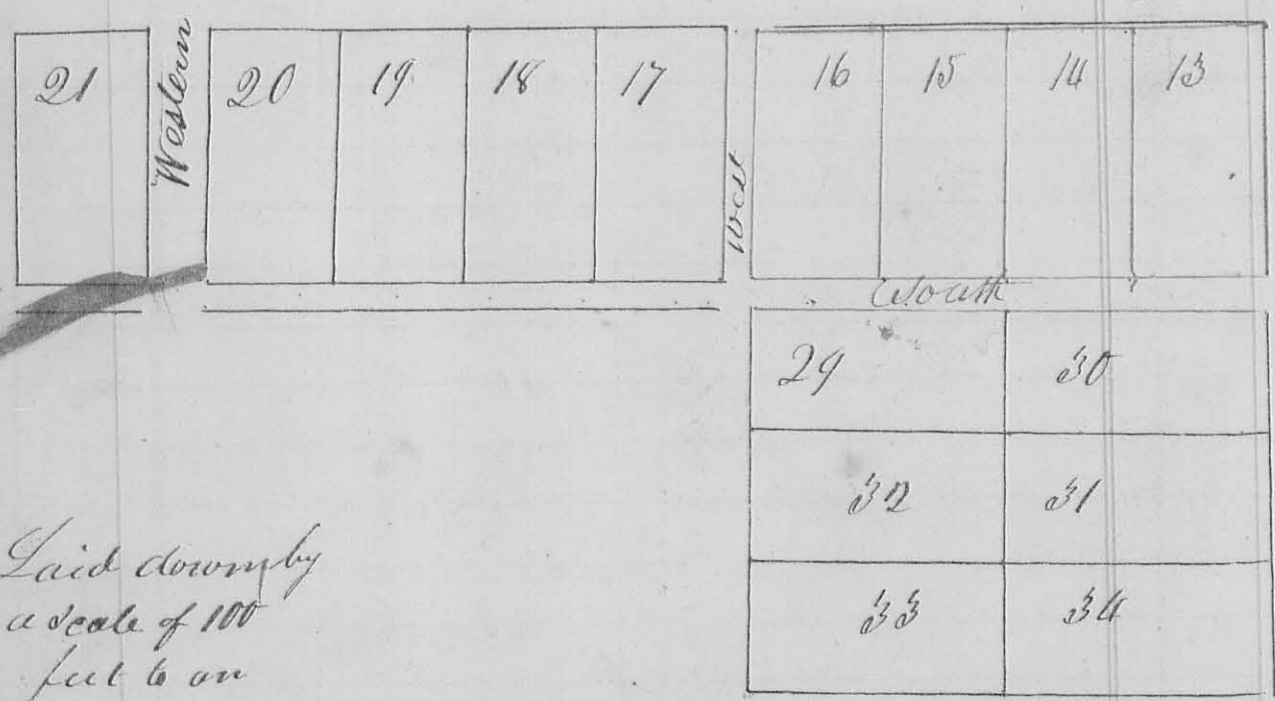
December 15 1836 by William + Levi Grubb. The lots original town plat and the original streets and alleys front and 132 feet back. - Western Street is 33 feet wide west corner of lot n^o 22 and one at the south east corner of Grubb's, and all east of said street are on William Grubb's recultation of the town of Middleburg and the additions from actual survey on the ground

Mr. Watson }
 Simon Thornburg } on Levi's part
 William Withers }
 Levi Grubb } on Wm's part

27
28



Columbus



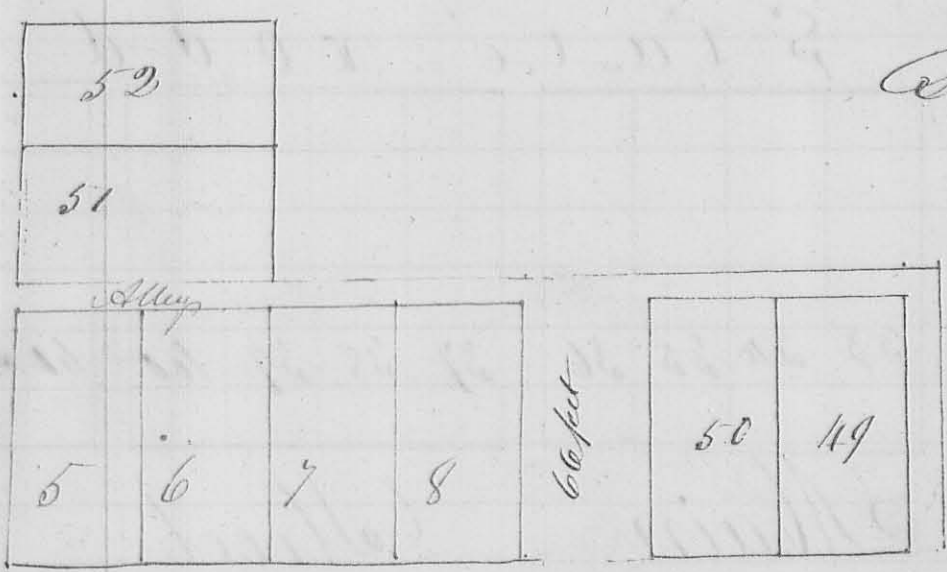
Laid down by
 a scale of 100
 feet to an
 inch

146

Buy and the Addition made there to the 15th day of, marked out and numbered with red ink, represent the are written with red ink. The lots are all 66 feet in Green Street is 66 feet wide. There is a stone at the north lot 1049. All the lots west of Barbara Street are on Levi land. I do certify the following plat to be a correct rep made there to by William Levy, sub. Decr. 15th 183 and said James M. Mearns Esq. J. C.

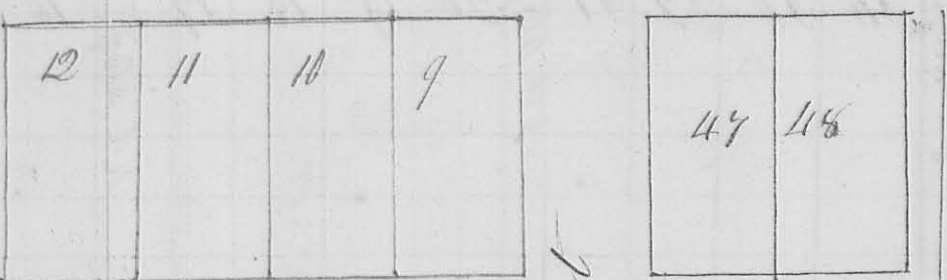
Surveyed 1836

Street 1049 or 66



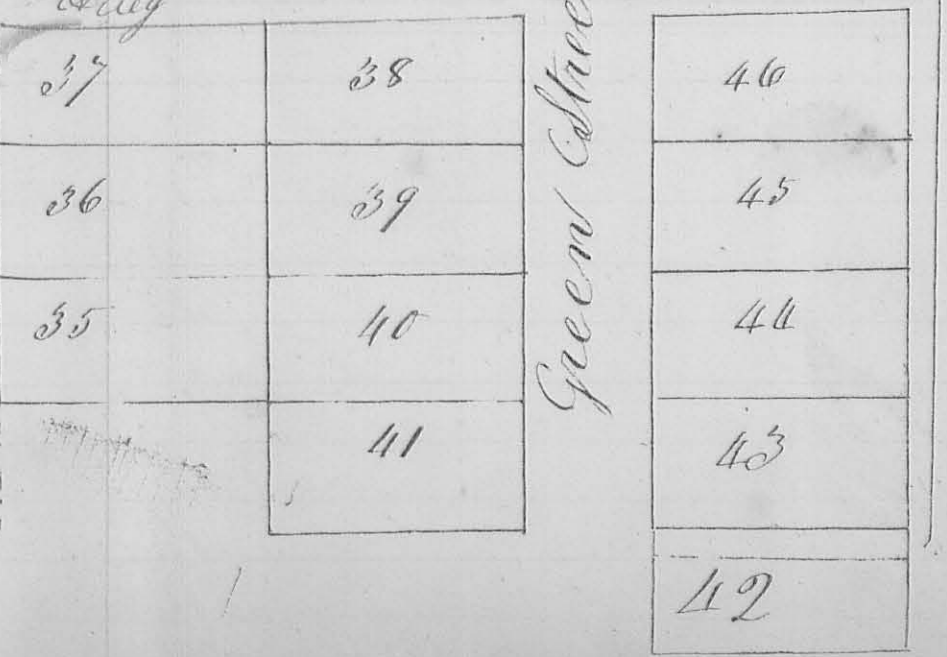
Street 542:8 66 ft wide

Barbara



Alley

Green Street



150

8221
no 221

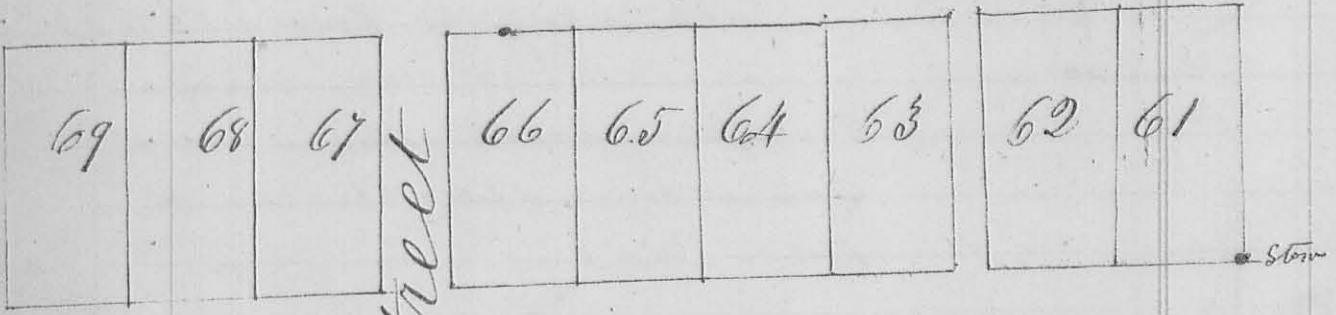
A part of an addition Middleburg

by William and Levid Grubb,
proprietors thereof Oct 15th 1834—

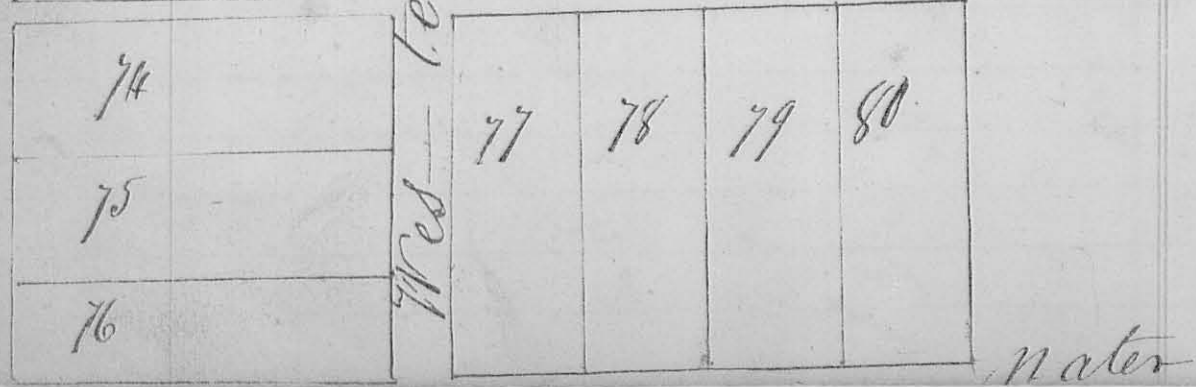
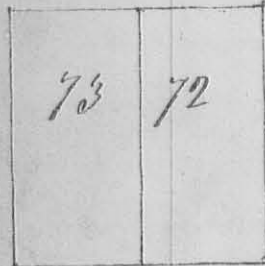
References.— The number of the lots continue
proprietorship from the 1st of the former addition
The place of the original streets is accurately
represented, and the place though not the space
of the lots is also represented on this plat—
North and Water streets are each 60 feet wide—
Water street runs from the south end of western



North



Columbus



191

191

Made to the Town of

57
58
59
60

66 ft wide
Street

56
55
54
53

Street

Street until it intersects
Green Street, and occupies
the ground occupied by lots 44
in the original plat of the first
addition made to the town of
Middleburg - The lots are all 66
feet in front, and extend back
132 feet except the lots 57 from
74 to 80 which are 198 feet long -
An addition of a street 66 feet wide
is appropriated and located from
the north end of Arbana Street
or 47 1/2 E 65 poles - thence N 4 W 62
poles to the road near Joshua Sharp's
Spring branch - a stone is placed at the
south east corner of lot 61 as represented on the
plat

Arbana

Street

Street

81	83
----	----

Street

180

81	82
----	----

Green

Alley Smith } 66 ft
Edmund (Shelb) }
A. W. Hammon
65 ft