

FB 709

Sandusky St. Cont.
Zanesfield, Ohio

Temporary pt. M. established
206.00' from pt. F. and perpen-
dicular to line F-C.

Pt. G. set at intersection of
lines M-I and J-F

Pt. H set at intersection of
lines M-I and L-K

Lots on E. side of Sandusky St.
are 160' deep. Sandusky St. is
60' wide. Cherry Alley is 16' wide
 $160 + 30 + 16 = 206'$

Pt. E. is 0.43' E. of line F-C

Pt. D. is 0.47' E. of line F-C

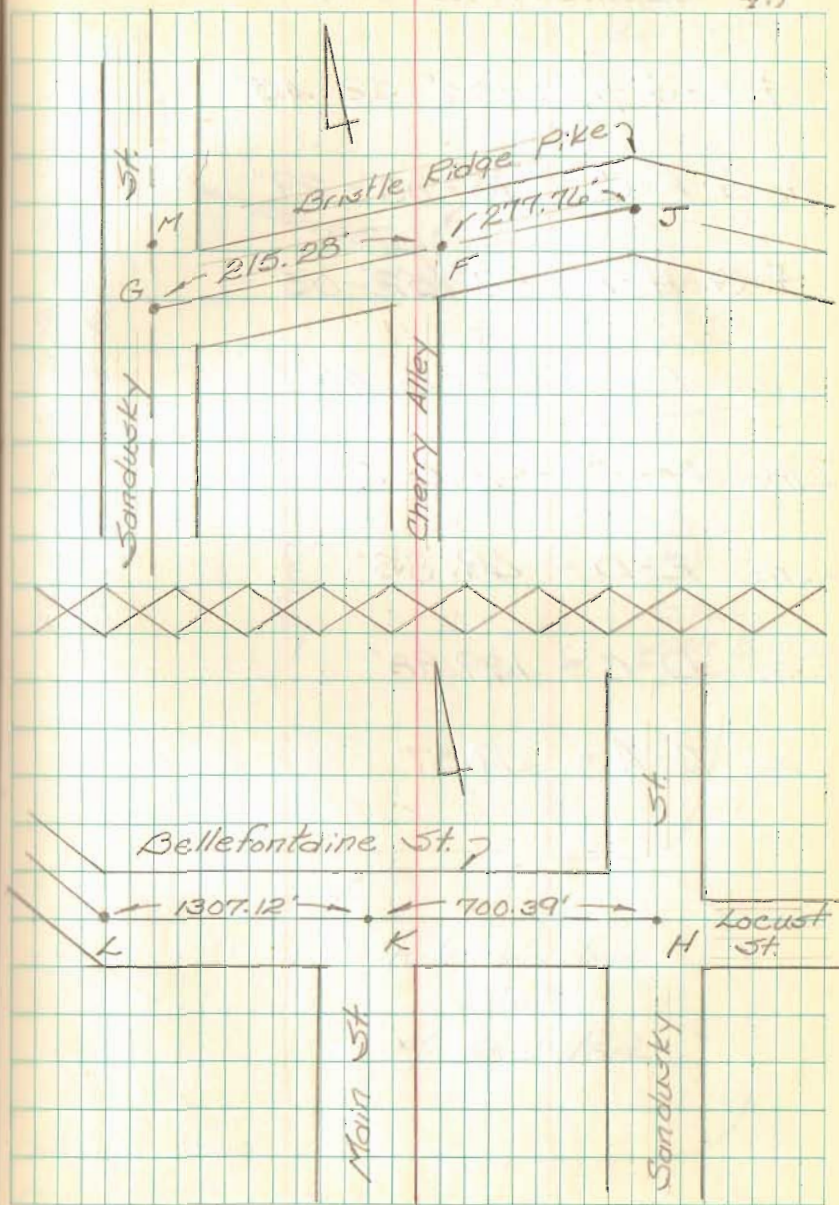
Perpendicular dist. off of line
F-C to pt. B is 16.10'

Perpendicular dist. off of line
F-C to pt. A is 16.31'

Nichols
Dill

6 Nov. 90

43



FB 709

Sandusky St. Cont.
Zanesfield, Ohio

$$\angle F-G-H = 106^{\circ} 52' 45''$$

$$\angle G-F-C = 73^{\circ} 08' 29''$$

$$\angle G-H-L = 88^{\circ} 52' 05''$$

$$\text{Line } F-C = 506.40'$$

$$\text{Line } F-E = 296.60'$$

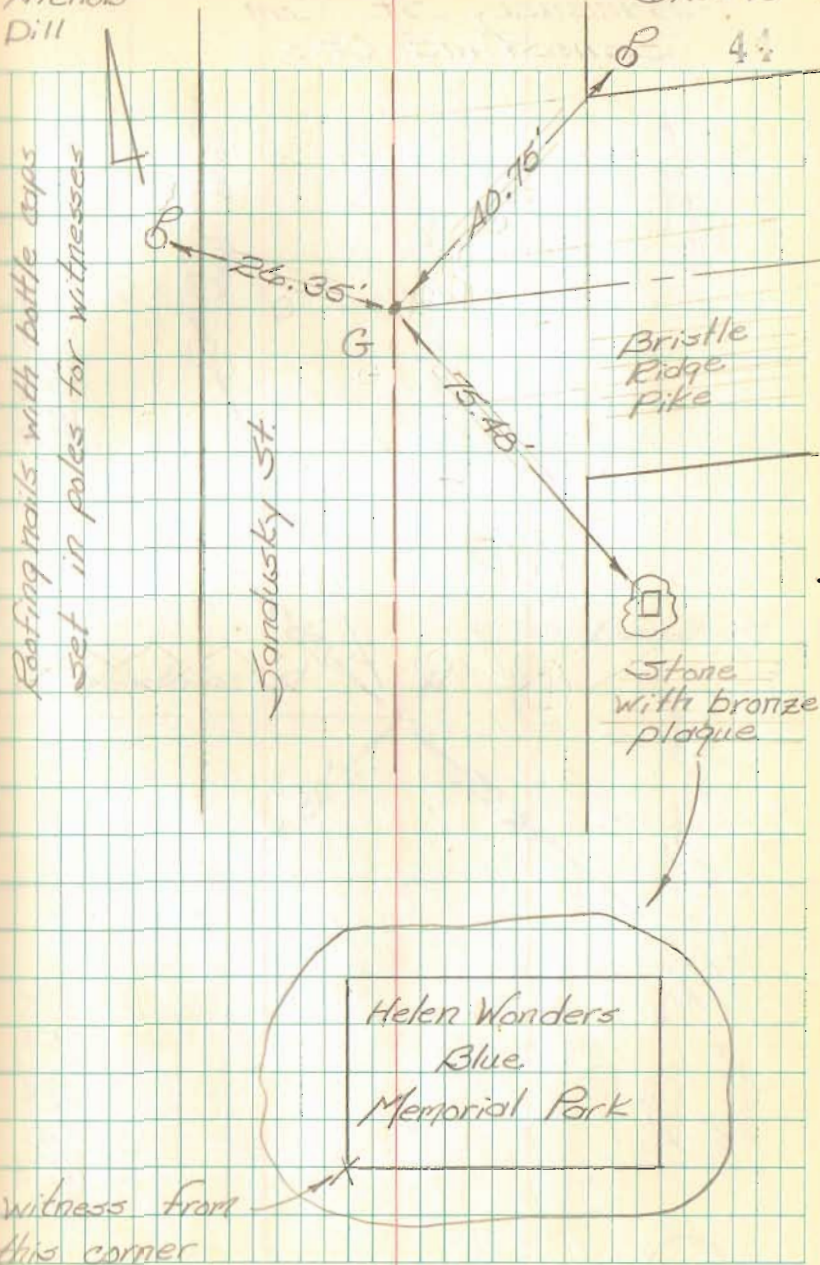
$$\text{Line } E-D = 69.83'$$

$$\text{Line } D-C = 139.98'$$

$$\text{Line } B-A = 69.87'$$

Nichols
Dill

6 Nov. 90



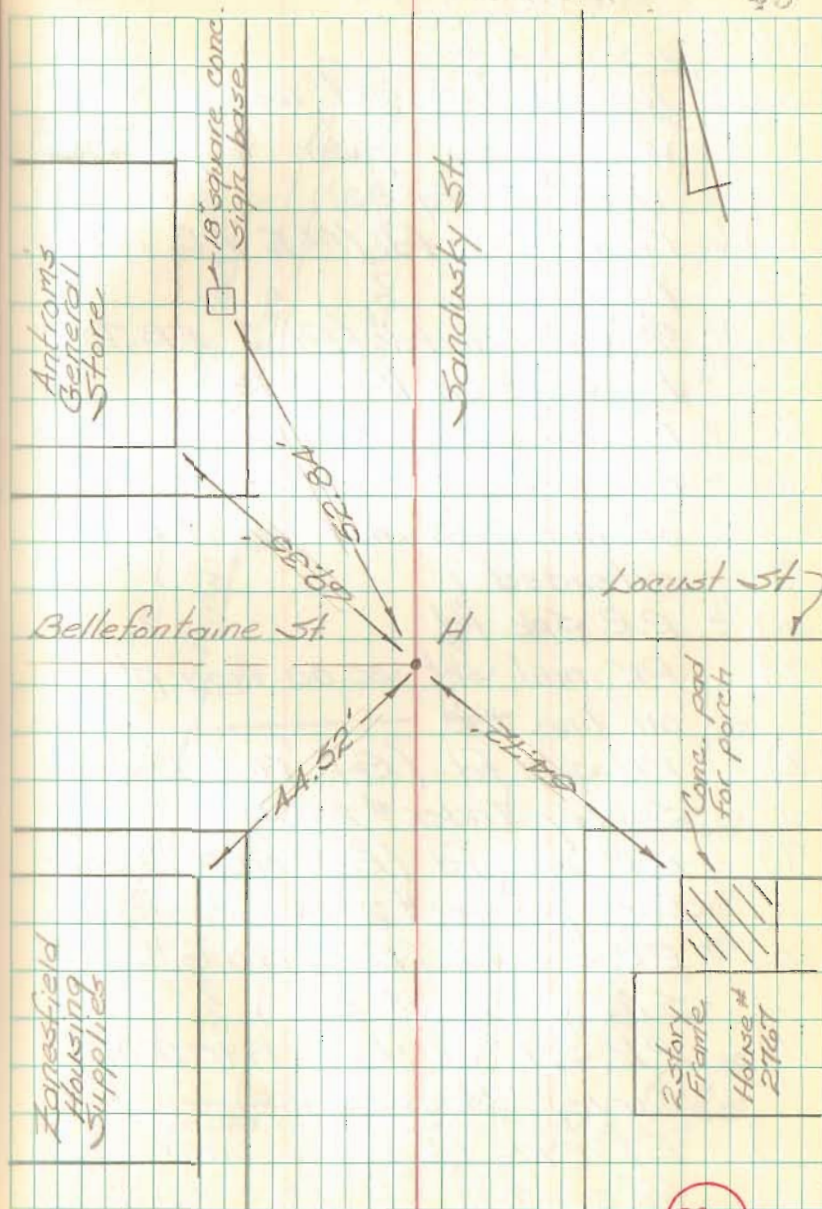
FB 709

Sandusky St. Cont.
Zanesfield, Ohio

Nichols
Dill

6 Nov. 90

45



8984