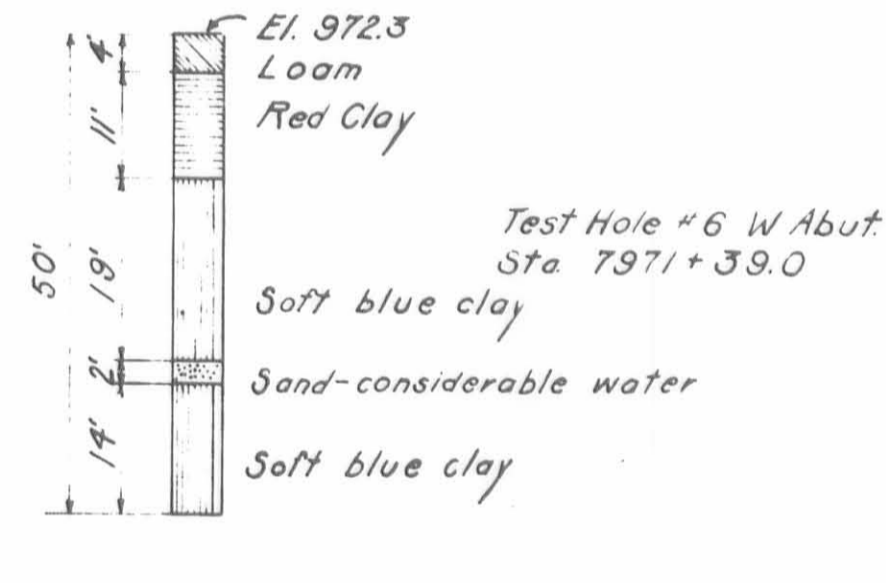
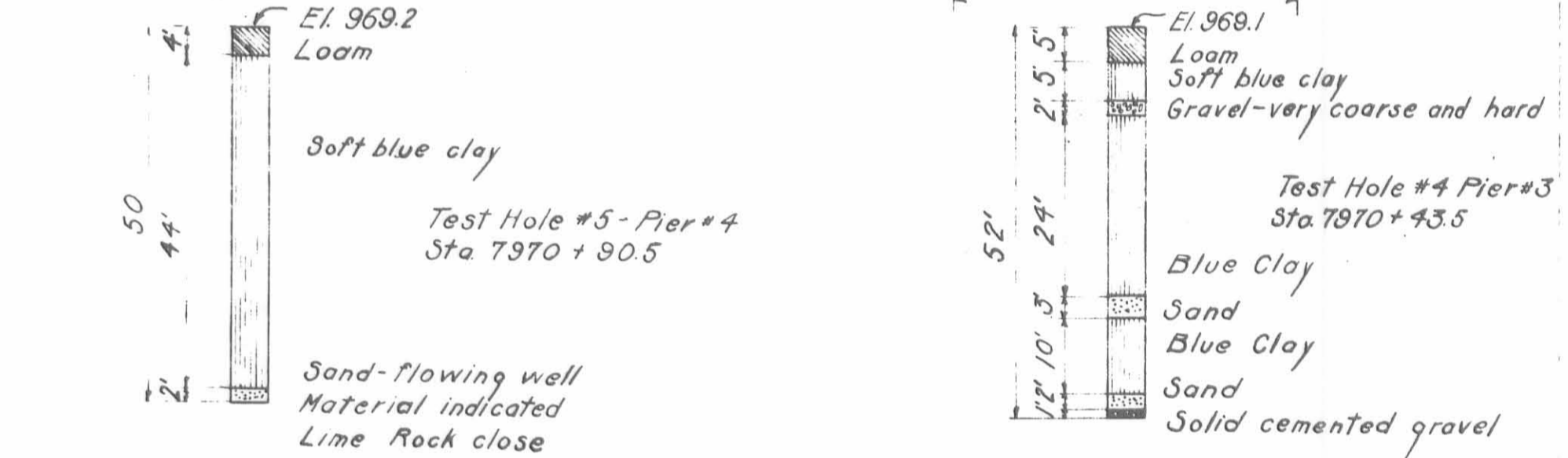


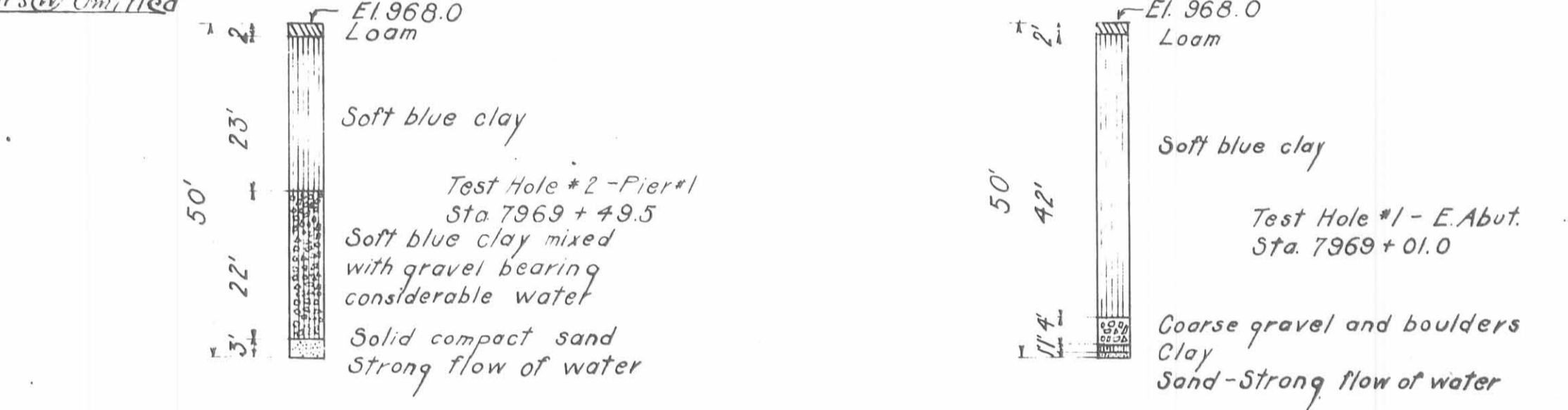
WEST ABUTMENT



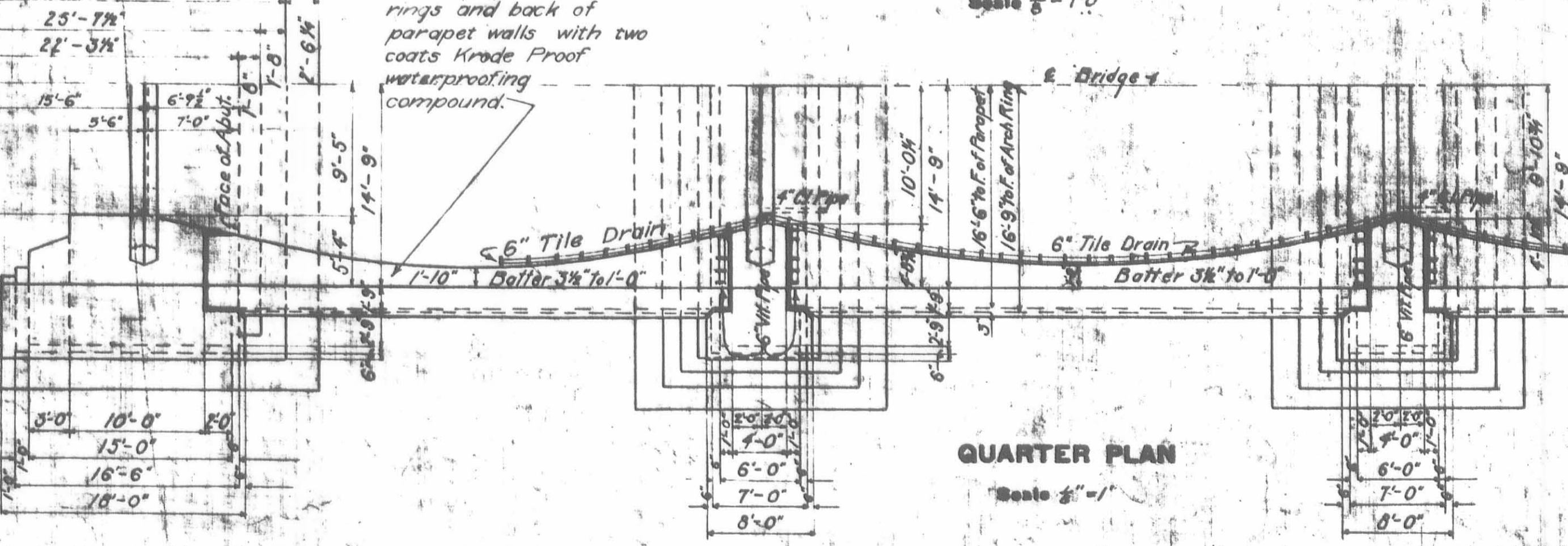
PIER No. 4



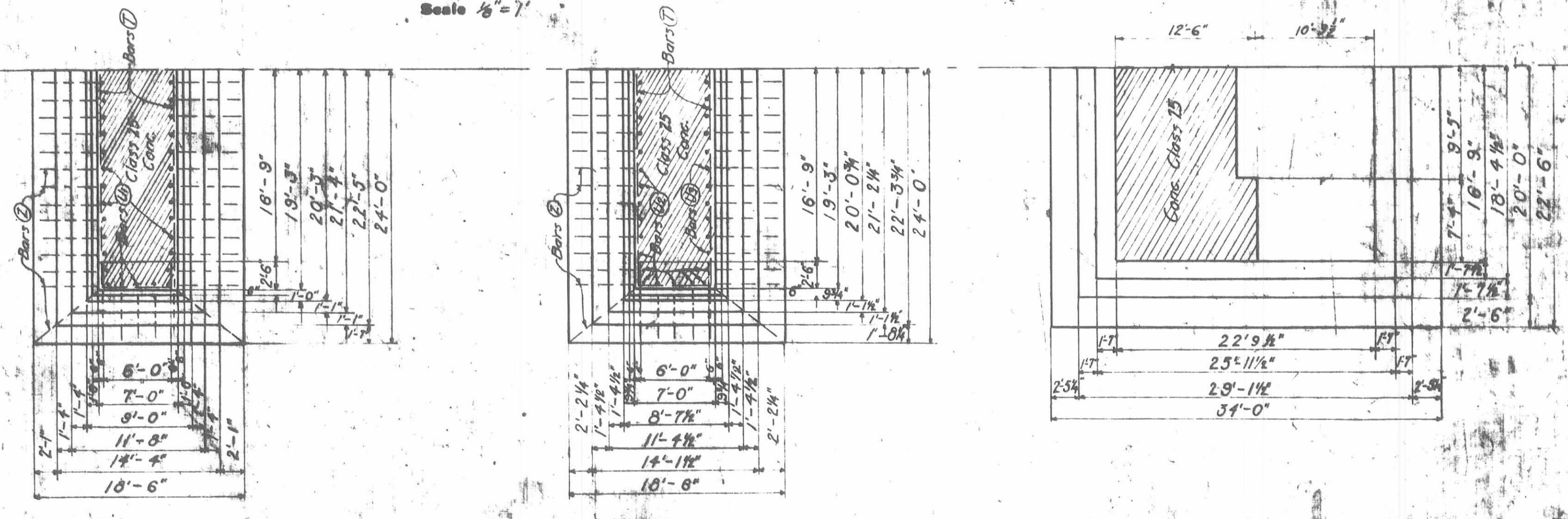
PIER No. 2



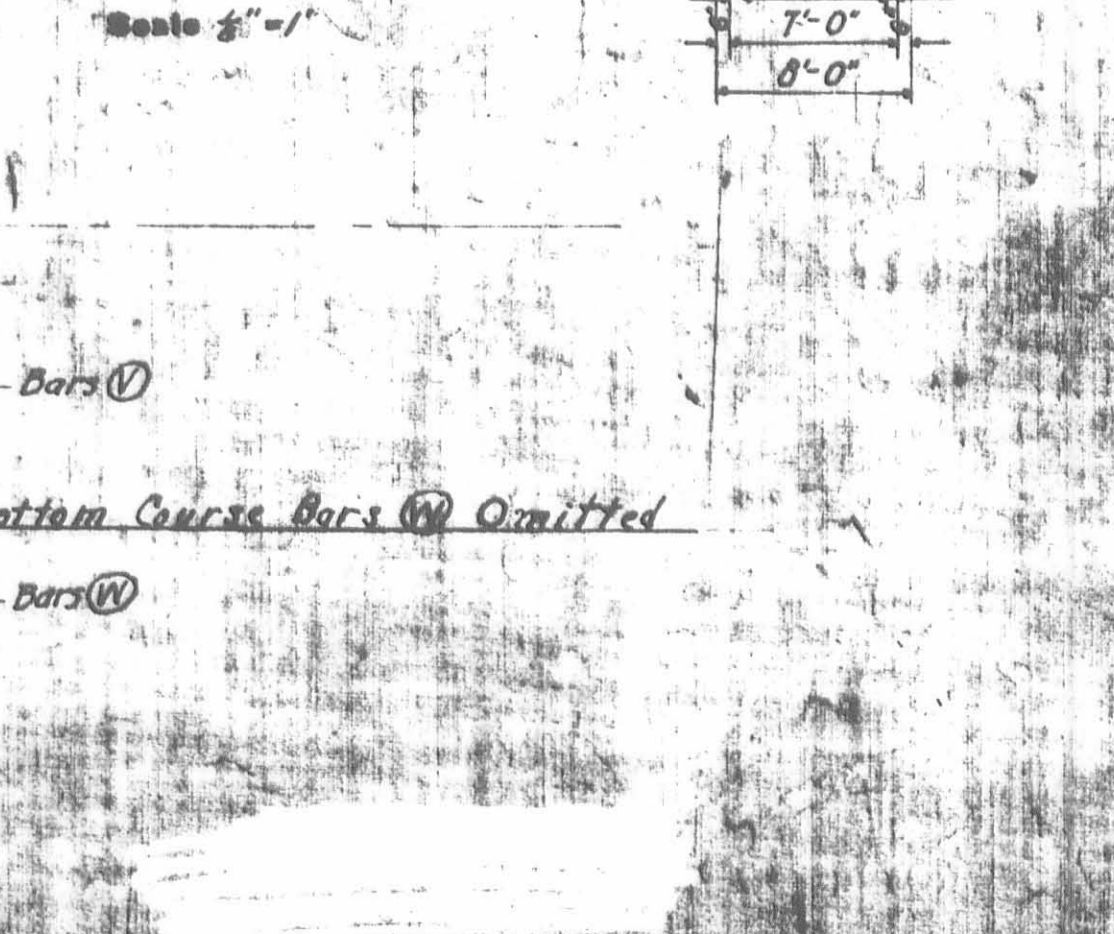
HALF ELEVATION SHOWING REINFORCEMENT IN FACE OF PARAPETS



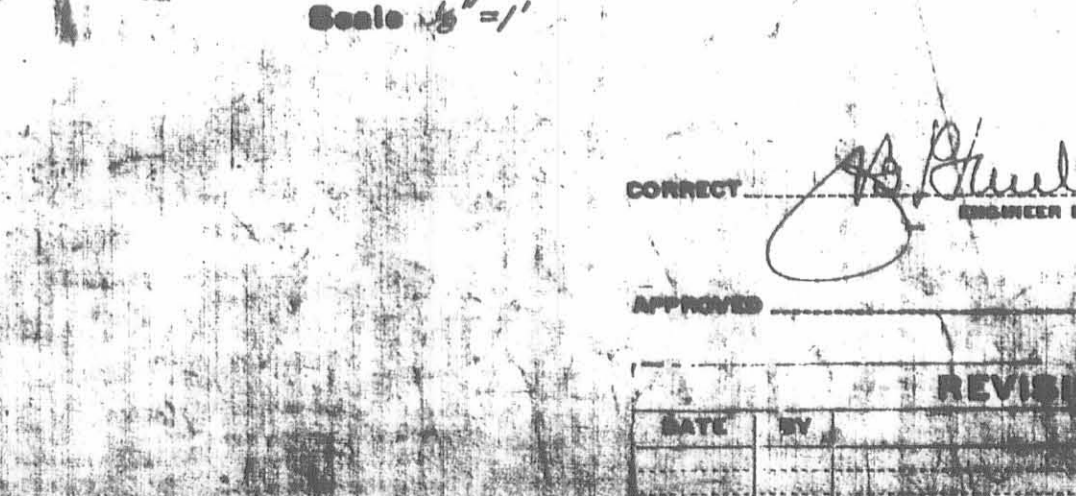
HALF SECTION SHOWING REINFORCEMENT IN ARCH RINGS & BACK OF PARAPETS



QUARTER PLAN



QUARTER SECTION AT SPRINGING LINE



THE CLEVELAND, CINCINNATI, COLUMBUS & ST. LOUIS RY. CO.  
VAL. SEC. 41  
BRIDGE NO. 195 INDIANAPOLIS DIVISION STA. 7971  
STONY CREEK BRIDGE  
DE GRAY TO CHERRY  
A TWO

R-22

R-22