

LOGAN COUNTY
LAKE TOWNSHIP

BELLEFONTAINE
OHIO

THIS PROPERTY WAS RECORDED WITH
THE NEW YORK CENTRAL
RAILROAD COMPANY
JUNE 20, 1922
ANNOUNCED IN L.C. & DISTRICT NO. 17700
RECORDED DECEMBER 16, 1922

THE TOLEDO AND OHIO CENTRAL RAILWAY
RIGHT OF WAY AND TRACK MAP
OPERATED BY
ST. MARYS BRANCH -- MAIN LINE
FROM STATION 899+82 TO STATION 936+71.9
SCALE 1 INCH = 200 FEET
JUNE 30, 1918

DATE	DESCRIPTION	BY
1918	12-14-1918	1252
1918	1-24-1918	1252
1918	4-16-1918	1252
1918	5-20-1918	1252
1918	7-25-1918	1252
1918	9-20-1918	1252
1918	11-14-1918	1252
1918	1-10-1919	1252
1918	3-25-1919	1252
1918	5-20-1919	1252
1918	7-25-1919	1252
1918	9-20-1919	1252
1918	11-14-1919	1252
1918	1-10-1920	1252
1918	3-25-1920	1252
1918	5-20-1920	1252
1918	7-25-1920	1252
1918	9-20-1920	1252
1918	11-14-1920	1252
1918	1-10-1921	1252
1918	3-25-1921	1252
1918	5-20-1921	1252
1918	7-25-1921	1252
1918	9-20-1921	1252
1918	11-14-1921	1252
1918	1-10-1922	1252
1918	3-25-1922	1252
1918	5-20-1922	1252
1918	7-25-1922	1252
1918	9-20-1922	1252
1918	11-14-1922	1252
1918	1-10-1923	1252
1918	3-25-1923	1252
1918	5-20-1923	1252
1918	7-25-1923	1252
1918	9-20-1923	1252
1918	11-14-1923	1252
1918	1-10-1924	1252
1918	3-25-1924	1252
1918	5-20-1924	1252
1918	7-25-1924	1252
1918	9-20-1924	1252
1918	11-14-1924	1252
1918	1-10-1925	1252
1918	3-25-1925	1252
1918	5-20-1925	1252
1918	7-25-1925	1252
1918	9-20-1925	1252
1918	11-14-1925	1252
1918	1-10-1926	1252
1918	3-25-1926	1252
1918	5-20-1926	1252
1918	7-25-1926	1252
1918	9-20-1926	1252
1918	11-14-1926	1252
1918	1-10-1927	1252
1918	3-25-1927	1252
1918	5-20-1927	1252
1918	7-25-1927	1252
1918	9-20-1927	1252
1918	11-14-1927	1252
1918	1-10-1928	1252
1918	3-25-1928	1252
1918	5-20-1928	1252
1918	7-25-1928	1252
1918	9-20-1928	1252
1918	11-14-1928	1252
1918	1-10-1929	1252
1918	3-25-1929	1252
1918	5-20-1929	1252
1918	7-25-1929	1252
1918	9-20-1929	1252
1918	11-14-1929	1252
1918	1-10-1930	1252
1918	3-25-1930	1252
1918	5-20-1930	1252
1918	7-25-1930	1252
1918	9-20-1930	1252
1918	11-14-1930	1252

1-303
10
R-48

Match Mark



LOGAN COUNTY
LAKE TOWNSHIP

BELLEFONTAINE
OHIO.

Sec. 35, T. 4, R. 14, M. R. S.
Sec. 34, T. 4, R. 14, M. R. S.

DEED RECORDS, 4th District (cont.)
 Vol. 2, Page 100
 1919
 1920
 1921
 1922
 1923
 1924
 1925
 1926
 1927
 1928
 1929
 1930
 1931
 1932
 1933
 1934
 1935
 1936
 1937
 1938
 1939
 1940
 1941
 1942
 1943
 1944
 1945
 1946
 1947
 1948
 1949
 1950
 1951
 1952
 1953
 1954
 1955
 1956
 1957
 1958
 1959
 1960
 1961
 1962
 1963
 1964
 1965
 1966
 1967
 1968
 1969
 1970
 1971
 1972
 1973
 1974
 1975
 1976
 1977
 1978
 1979
 1980
 1981
 1982
 1983
 1984
 1985
 1986
 1987
 1988
 1989
 1990
 1991
 1992
 1993
 1994
 1995
 1996
 1997
 1998
 1999
 2000

THIS PROPERTY WAS DECEDED WITH
 THE NEW YORK CENTRAL
 RAILROAD COMPANY
 JUNE 30, 1932
 AUTHORIZED IN L. C. DECREE NO. 17700
 DATED JUNE 18, 1932

RIGHT OF WAY AND TRACK MAP
 OF THE
 TOLEDO AND OHIO CENTRAL RAILWAY
 OPERATED BY
 THE TOLEDO AND OHIO CENTRAL RAILWAY COMPANY

ST. MARY'S BRANCH - MAIN LINE
 FROM STATION 966+71.9 TO STATION 1050+00
 SCALE 1 INCH = 100 FEET
 JUNE 30, 1918

SHEET NO. 12 OF 25
 ST. MARY'S BRANCH - MAIN LINE
 FROM STATION 966+71.9 TO STATION 1050+00
 SCALE 1 INCH = 100 FEET
 JUNE 30, 1918

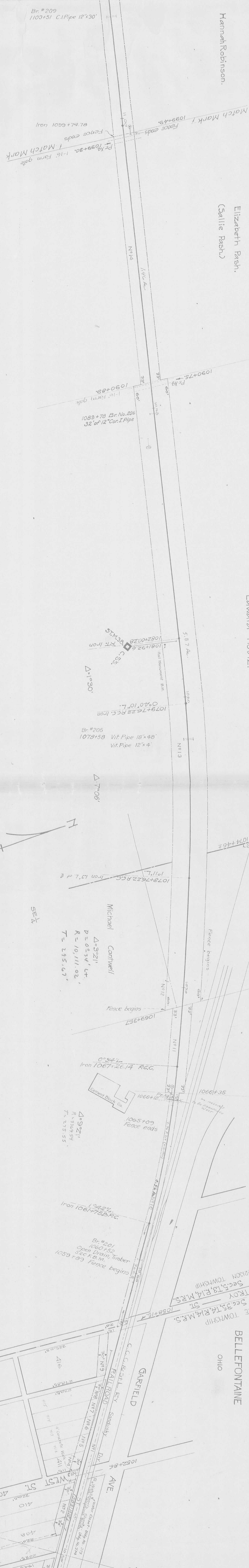
11-3
 V-303
 11
 V-3
 11

Hannah Robinson.

Elizabeth Bash.
(Sallie Bash.)

Edward Houtz.

BELLEFONTAINE
OHIO



Br. #209
1103+51 C.I.Pipe 12"x30"

Match Mark 1
Fence ends
1099+43
Fence ends
1099+80
1-16 Form gate
Match Mark

1082+78 Br. No. 206
32' of 12" Cor. I. Pipe

5.87 Ac.
1081+92
1082+00
R.R. Iron

Br. #205
1078+58 Vit. Pipe 18"x48"
1078+58 Vit. Pipe 12"x4"

Michael Cartwell
 $\Delta = 3^{\circ}21'$
 $D = 0^{\circ}34'47''$
 $R = 10,111.02'$
 $T = 295.67'$

$\Delta = 9^{\circ}21'$
 $R = 335.59'$
 $T = 675.55'$

Br. #201
1060+50
Open Drain Timber
52 C.F. 5 in.
1060+50
Fence begins

LAKE TOWNSHIP
Sec. 35, T4 R4 M.R.S.
ST. TROY
Sec. 13, R14 M.R.S.
HARRISON TOWNSHIP

Year	Description	Station	Change
1941	No Change	1052	16
1949	do	1053	20
1950	do	1054	20
1951	do	1055	20
1952	do	1056	20
1953	do	1057	20
1954	do	1058	20
1955	do	1059	20
1956	do	1060	20
1957	do	1061	20
1958	do	1062	20
1959	do	1063	20
1960	do	1064	20
1961	do	1065	20
1962	do	1066	20
1963	do	1067	20
1964	do	1068	20
1965	do	1069	20
1966	do	1070	20
1967	do	1071	20
1968	do	1072	20
1969	do	1073	20
1970	do	1074	20

THE PROPERTY WAS RECORDED WITH
THE NEW YORK CENTRAL
RAILROAD COMPANY
JUNE 30, 1932
APPROVED BY L. C. DICKET NO. 7720
DECEMBER 18, 1932

RIGHT OF WAY AND TRACK MAP
OPERATED BY
THE TOLEDO AND OHIO CENTRAL RAILWAY COMPANY

ST. MARYS BRANCH -- MAIN LINE
FROM STATION 1050+00 TO STATION 1099+45
SCALE 1 INCH = 100 FEET
JUNE 30, 1918

THE TOLEDO AND OHIO CENTRAL RAILWAY COMPANY

LOGAN COUNTY
LAKE TOWNSHIP
HARRISON TOWNSHIP

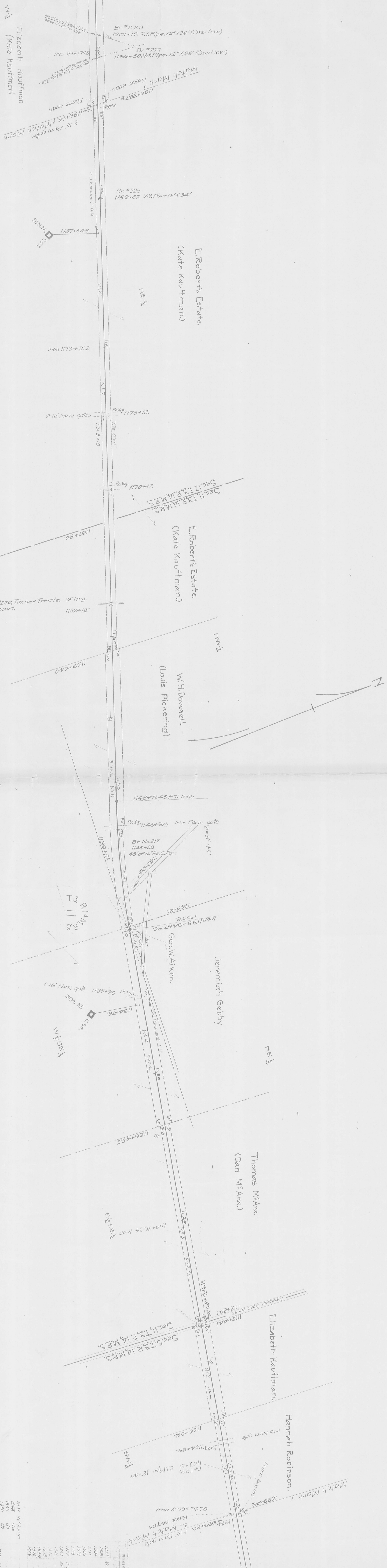
SHEET NO. 13
FROM SURVEY STATION 1050+00 TO STATION 1099+45

W. J. HARRISON
VALUATION ENGINEER

V-303
12

12

1918 No Change
1919 No Change
1920 No Change
1921 No Change
1922 No Change
1923 No Change
1924 No Change
1925 No Change
1926 No Change
1927 No Change
1928 No Change
1929 No Change
1930 No Change



LOGAN COUNTY
HARRISON TOWNSHIP

THE TOLEDO AND OHIO CENTRAL RAILWAY
VALUATION ENGINEERS

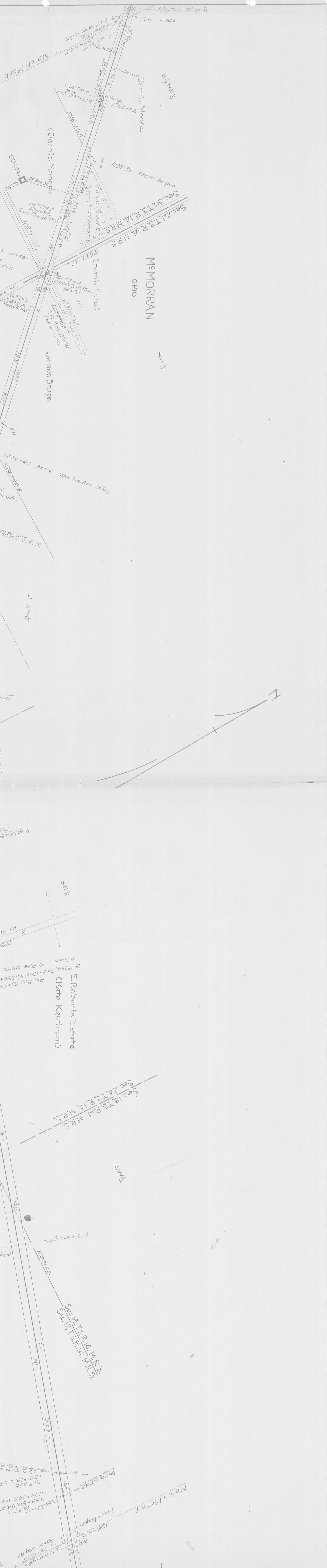
THE TOLEDO AND OHIO CENTRAL RAILWAY COMPANY
THE TOLEDO AND OHIO CENTRAL RAILWAY
OPERATED BY
ST. MARYS BRANCH -- MAIN LINE
FROM STATION 1099+45 TO STATION 1196+33.7
SCALE 1 INCH = 200 FEET
JUNE 30, 1918

THIS PROPERTY WAS MERGED WITH
THE NEW YORK CENTRAL
RAILROAD COMPANY
JUNE 30, 1912
AUTHORIZED BY U.S. DISTRICT COURT, CLEVELAND, OHIO
DECEMBER 18, 1907

RIGHT OF WAY AND TRACK MAP

REVISION	DATE	BY	DESCRIPTION
1918	1918	W.B.	As Change
1917	1917	W.B.	As Change
1916	1916	W.B.	As Change
1915	1915	W.B.	As Change
1914	1914	W.B.	As Change
1913	1913	W.B.	As Change
1912	1912	W.B.	As Change
1911	1911	W.B.	As Change
1910	1910	W.B.	As Change
1909	1909	W.B.	As Change
1908	1908	W.B.	As Change
1907	1907	W.B.	As Change
1906	1906	W.B.	As Change
1905	1905	W.B.	As Change
1904	1904	W.B.	As Change
1903	1903	W.B.	As Change
1902	1902	W.B.	As Change
1901	1901	W.B.	As Change
1900	1900	W.B.	As Change
1899	1899	W.B.	As Change
1898	1898	W.B.	As Change
1897	1897	W.B.	As Change
1896	1896	W.B.	As Change
1895	1895	W.B.	As Change
1894	1894	W.B.	As Change
1893	1893	W.B.	As Change
1892	1892	W.B.	As Change
1891	1891	W.B.	As Change
1890	1890	W.B.	As Change
1889	1889	W.B.	As Change
1888	1888	W.B.	As Change
1887	1887	W.B.	As Change
1886	1886	W.B.	As Change
1885	1885	W.B.	As Change
1884	1884	W.B.	As Change
1883	1883	W.B.	As Change
1882	1882	W.B.	As Change
1881	1881	W.B.	As Change
1880	1880	W.B.	As Change
1879	1879	W.B.	As Change
1878	1878	W.B.	As Change
1877	1877	W.B.	As Change
1876	1876	W.B.	As Change
1875	1875	W.B.	As Change
1874	1874	W.B.	As Change
1873	1873	W.B.	As Change
1872	1872	W.B.	As Change
1871	1871	W.B.	As Change
1870	1870	W.B.	As Change
1869	1869	W.B.	As Change
1868	1868	W.B.	As Change
1867	1867	W.B.	As Change
1866	1866	W.B.	As Change
1865	1865	W.B.	As Change
1864	1864	W.B.	As Change
1863	1863	W.B.	As Change
1862	1862	W.B.	As Change
1861	1861	W.B.	As Change
1860	1860	W.B.	As Change
1859	1859	W.B.	As Change
1858	1858	W.B.	As Change
1857	1857	W.B.	As Change
1856	1856	W.B.	As Change
1855	1855	W.B.	As Change
1854	1854	W.B.	As Change
1853	1853	W.B.	As Change
1852	1852	W.B.	As Change
1851	1851	W.B.	As Change
1850	1850	W.B.	As Change
1849	1849	W.B.	As Change
1848	1848	W.B.	As Change
1847	1847	W.B.	As Change
1846	1846	W.B.	As Change
1845	1845	W.B.	As Change
1844	1844	W.B.	As Change
1843	1843	W.B.	As Change
1842	1842	W.B.	As Change
1841	1841	W.B.	As Change
1840	1840	W.B.	As Change
1839	1839	W.B.	As Change
1838	1838	W.B.	As Change
1837	1837	W.B.	As Change
1836	1836	W.B.	As Change
1835	1835	W.B.	As Change
1834	1834	W.B.	As Change
1833	1833	W.B.	As Change
1832	1832	W.B.	As Change
1831	1831	W.B.	As Change
1830	1830	W.B.	As Change
1829	1829	W.B.	As Change
1828	1828	W.B.	As Change
1827	1827	W.B.	As Change
1826	1826	W.B.	As Change
1825	1825	W.B.	As Change
1824	1824	W.B.	As Change
1823	1823	W.B.	As Change
1822	1822	W.B.	As Change
1821	1821	W.B.	As Change
1820	1820	W.B.	As Change
1819	1819	W.B.	As Change
1818	1818	W.B.	As Change
1817	1817	W.B.	As Change
1816	1816	W.B.	As Change
1815	1815	W.B.	As Change
1814	1814	W.B.	As Change
1813	1813	W.B.	As Change
1812	1812	W.B.	As Change
1811	1811	W.B.	As Change
1810	1810	W.B.	As Change
1809	1809	W.B.	As Change
1808	1808	W.B.	As Change
1807	1807	W.B.	As Change
1806	1806	W.B.	As Change
1805	1805	W.B.	As Change
1804	1804	W.B.	As Change
1803	1803	W.B.	As Change
1802	1802	W.B.	As Change
1801	1801	W.B.	As Change
1800	1800	W.B.	As Change
1799	1799	W.B.	As Change
1798	1798	W.B.	As Change
1797	1797	W.B.	As Change
1796	1796	W.B.	As Change
1795	1795	W.B.	As Change
1794	1794	W.B.	As Change
1793	1793	W.B.	As Change
1792	1792	W.B.	As Change
1791	1791	W.B.	As Change
1790	1790	W.B.	As Change
1789	1789	W.B.	As Change
1788	1788	W.B.	As Change
1787	1787	W.B.	As Change
1786	1786	W.B.	As Change
1785	1785	W.B.	As Change
1784	1784	W.B.	As Change
1783	1783	W.B.	As Change
1782	1782	W.B.	As Change
1781	1781	W.B.	As Change
1780	1780	W.B.	As Change
1779	1779	W.B.	As Change
1778	1778	W.B.	As Change
1777	1777	W.B.	As Change
1776	1776	W.B.	As Change
1775	1775	W.B.	As Change
1774	1774	W.B.	As Change
1773	1773	W.B.	As Change
1772	1772	W.B.	As Change
1771	1771	W.B.	As Change
1770	1770	W.B.	As Change
1769	1769	W.B.	As Change
1768	1768	W.B.	As Change
1767	1767	W.B.	As Change
1766	1766	W.B.	As Change
1765	1765	W.B.	As Change
1764	1764	W.B.	As Change
1763	1763	W.B.	As Change
1762	1762	W.B.	As Change
1761	1761	W.B.	As Change
1760	1760	W.B.	As Change
1759	1759	W.B.	As Change
1758	1758	W.B.	As Change
1757	1757	W.B.	As Change
1756	1756	W.B.	As Change
1755	1755	W.B.	As Change
1754	1754	W.B.	As Change
1753	1753	W.B.	As Change
1752	1752	W.B.	As Change
1751	1751	W.B.	As Change
1750	1750	W.B.	As Change
1749	1749	W.B.	As Change
1748	1748	W.B.	As Change
1747	1747	W.B.	As Change
1746	1746	W.B.	As Change
1745	1745	W.B.	As Change
1744	1744	W.B.	As Change
1743	1743	W.B.	As Change
1742	1742	W.B.	As Change
1741	1741	W.B.	As Change
1740	1740	W.B.	As Change
1739	1739	W.B.	As Change
1738	1738	W.B.	As Change
1737	1737	W.B.	As Change
1736	1736	W.B.	As Change
1735	1735	W.B.	As Change
1734	1734	W.B.	As Change
1733	1733	W.B.	As Change
1732	1732	W.B.	As Change
1731	1731	W.B.	As Change
1730	1730	W.B.	As Change
1729	1729	W.B.	As Change
1728	1728	W.B.	As Change
1727	1727	W.B.	As Change
1726	1726	W.B.	As Change
1725	1725	W.B.	As Change
1724	1724	W.B.	As Change
1723	1723	W.B.	As Change
1722	1722	W.B.	As Change
1721	1721	W.B.	As Change
1720	1720	W.B.	As Change
1719	1719	W.B.	As Change
1718	1718	W.B.	As Change
1717	1717	W.B.	As Change
1716	1716	W.B.	As Change
1715	1715	W.B.	As Change

W.B. 13
13



LOGAN COUNTY
HARRISON TOWNSHIP

THE TOLEDO AND OHIO CENTRAL RAILWAY COMPANY

OPERATED BY
THE TOLEDO AND OHIO CENTRAL RAILWAY

RIGHT OF WAY AND TRACK MAP

ANNOUNCED IN L. C. ORDER NO. 17700
DECEMBER 18, 1932

ST. MARYS BRANCH -- MAIN LINE
FROM STATION 1196+33.7 TO STATION 1306+13.5

SCALE 1 INCH = 200 FEET
JUNE 30, 1918

OFFICE OF VALUATION ENGINEER, COLUMBUS, OHIO

OFFICE OF ENGINEER, COLUMBUS, OHIO

THE PROPERTY WAS HELD BY
THE NEW YORK CENTRAL
RAILROAD COMPANY

JUNE 30, 1912

Year	Description	Stationing
1897	McChange	1249
1898	McChange	1249
1899	McChange	1249
1900	McChange	1249
1901	McChange	1249
1902	McChange	1249
1903	McChange	1249
1904	McChange	1249
1905	McChange	1249
1906	McChange	1249
1907	McChange	1249
1908	McChange	1249
1909	McChange	1249
1910	McChange	1249
1911	McChange	1249
1912	McChange	1249
1913	McChange	1249
1914	McChange	1249
1915	McChange	1249
1916	McChange	1249
1917	McChange	1249
1918	McChange	1249
1919	McChange	1249
1920	McChange	1249
1921	McChange	1249
1922	McChange	1249
1923	McChange	1249
1924	McChange	1249
1925	McChange	1249
1926	McChange	1249
1927	McChange	1249
1928	McChange	1249
1929	McChange	1249
1930	McChange	1249
1931	McChange	1249
1932	McChange	1249
1933	McChange	1249
1934	McChange	1249
1935	McChange	1249
1936	McChange	1249
1937	McChange	1249
1938	McChange	1249
1939	McChange	1249
1940	McChange	1249
1941	McChange	1249
1942	McChange	1249
1943	McChange	1249
1944	McChange	1249
1945	McChange	1249
1946	McChange	1249

V-303
14

1/3

1/4

1/4

1/4

1/4

1/4

1/4

1/4

1/4

1/4

1/4

1/4

1/4

1/4

1/4

1/4

1/4

1/4

1/4

1/4

1/4

1/4

1/4

1/4

1/4

1/4

1/4

1/4

1/4

1/4

1/4

1/4

1/4

1/4

1/4

1/4

1/4

1/4

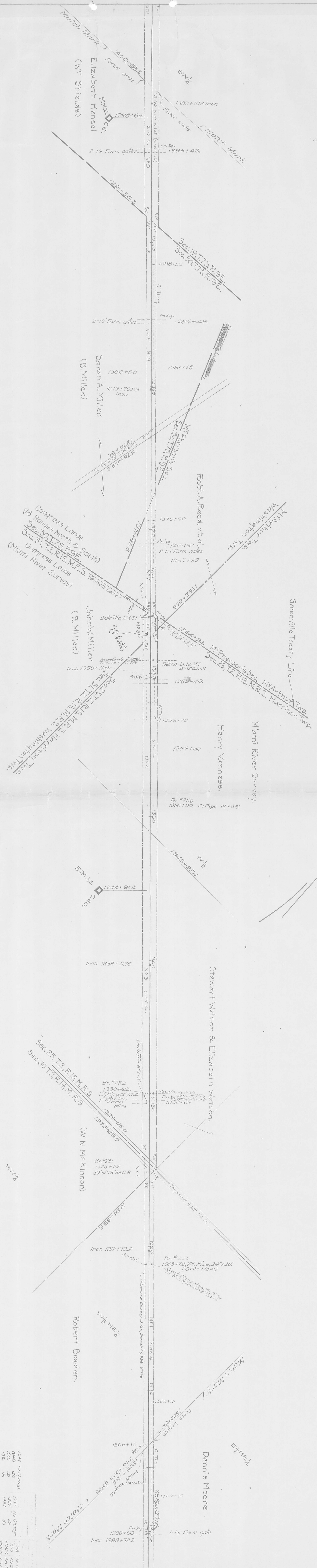
1/4

1/4

1/4

1/4

1/4



LOGAN COUNTY
HARRISON TOWNSHIP
WASHINGTON TOWNSHIP

THE TOLEDO AND OHIO CENTRAL RAILWAY COMPANY

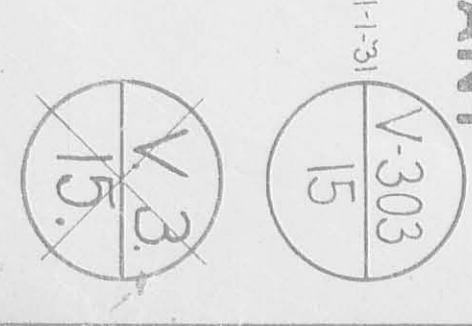
ST. MARYS BRANCH -- MAIN LINE
FROM STATION 1306+13.5 TO STATION 1400+88.5
OFFICE OF VALUATOR, ENGINEER, COLUMBUS, OHIO
JUNE 30, 1918

APPROVED IN L.C. ORDER NO. 17700
DECEMBER 18, 1902

THIS PROPERTY WAS MERGED WITH THE NEW YORK CENTRAL RAILROAD COMPANY

Year	Change	Year	Change
1841	No Change	1916	No Change
1849	do	1917	No Change
1850	do	1918	No Change
1851	do	1919	No Change
1852	do	1920	No Change
1853	do	1921	No Change
1854	do	1922	No Change
1855	do	1923	No Change
1856	do	1924	No Change
1857	do	1925	No Change
1858	do	1926	No Change
1859	do	1927	No Change
1860	do	1928	No Change
1861	do	1929	No Change
1862	do	1930	No Change
1863	do	1931	No Change
1864	do	1932	No Change
1865	do	1933	No Change
1866	do	1934	No Change
1867	do	1935	No Change
1868	do	1936	No Change
1869	do	1937	No Change
1870	do	1938	No Change
1871	do	1939	No Change
1872	do	1940	No Change
1873	do	1941	No Change
1874	do	1942	No Change
1875	do	1943	No Change
1876	do	1944	No Change
1877	do	1945	No Change
1878	do	1946	No Change
1879	do	1947	No Change
1880	do	1948	No Change
1881	do	1949	No Change
1882	do	1950	No Change
1883	do	1951	No Change
1884	do	1952	No Change
1885	do	1953	No Change
1886	do	1954	No Change
1887	do	1955	No Change
1888	do	1956	No Change
1889	do	1957	No Change
1890	do	1958	No Change
1891	do	1959	No Change
1892	do	1960	No Change
1893	do	1961	No Change
1894	do	1962	No Change
1895	do	1963	No Change
1896	do	1964	No Change
1897	do	1965	No Change
1898	do	1966	No Change
1899	do	1967	No Change
1900	do	1968	No Change
1901	do	1969	No Change
1902	do	1970	No Change
1903	do	1971	No Change
1904	do	1972	No Change
1905	do	1973	No Change
1906	do	1974	No Change
1907	do	1975	No Change
1908	do	1976	No Change
1909	do	1977	No Change
1910	do	1978	No Change
1911	do	1979	No Change
1912	do	1980	No Change
1913	do	1981	No Change
1914	do	1982	No Change
1915	do	1983	No Change
1916	do	1984	No Change
1917	do	1985	No Change
1918	do	1986	No Change
1919	do	1987	No Change
1920	do	1988	No Change
1921	do	1989	No Change
1922	do	1990	No Change
1923	do	1991	No Change
1924	do	1992	No Change
1925	do	1993	No Change
1926	do	1994	No Change
1927	do	1995	No Change
1928	do	1996	No Change
1929	do	1997	No Change
1930	do	1998	No Change
1931	do	1999	No Change
1932	do	2000	No Change

Sheet No. 15 of 35
ST. MARYS BRANCH - MAIN LINE
FROM STATION 1306+13.5 TO STATION 1400+88.5
OFFICE OF VALUATOR, ENGINEER, COLUMBUS, OHIO
JUNE 30, 1918



LOGAN COUNTY
WASHINGTON TOWNSHIP



1:30
V-303
16

THE TOLEDO AND OHIO CENTRAL RAILWAY COMPANY
OPERATED BY
THE TOLEDO AND OHIO CENTRAL RAILWAY
ST. MARYS BRANCH -- MAIN LINE
FROM STATION 1400+00 TO STATION 1500+00
SCALE 1 INCH = 200 FEET
OFFICE OF VALUATION ENGINEER, COLUMBUS, OHIO
JUNE 30, 1918

RIGHT OF WAY AND TRACK MAP
ANNEXMENT N.L. & DIRECT NO. 1770
RECORDED JUNE 11, 1927

THE TOLEDO AND OHIO CENTRAL RAILWAY
OPERATED BY
THE TOLEDO AND OHIO CENTRAL RAILWAY
ST. MARYS BRANCH -- MAIN LINE
FROM STATION 1400+00 TO STATION 1500+00
SCALE 1 INCH = 200 FEET
OFFICE OF VALUATION ENGINEER, COLUMBUS, OHIO
JUNE 30, 1918

THE TOLEDO AND OHIO CENTRAL RAILWAY
OPERATED BY
THE TOLEDO AND OHIO CENTRAL RAILWAY
ST. MARYS BRANCH -- MAIN LINE
FROM STATION 1400+00 TO STATION 1500+00
SCALE 1 INCH = 200 FEET
OFFICE OF VALUATION ENGINEER, COLUMBUS, OHIO
JUNE 30, 1918

THE TOLEDO AND OHIO CENTRAL RAILWAY
OPERATED BY
THE TOLEDO AND OHIO CENTRAL RAILWAY
ST. MARYS BRANCH -- MAIN LINE
FROM STATION 1400+00 TO STATION 1500+00
SCALE 1 INCH = 200 FEET
OFFICE OF VALUATION ENGINEER, COLUMBUS, OHIO
JUNE 30, 1918

THE TOLEDO AND OHIO CENTRAL RAILWAY
OPERATED BY
THE TOLEDO AND OHIO CENTRAL RAILWAY
ST. MARYS BRANCH -- MAIN LINE
FROM STATION 1400+00 TO STATION 1500+00
SCALE 1 INCH = 200 FEET
OFFICE OF VALUATION ENGINEER, COLUMBUS, OHIO
JUNE 30, 1918

THE TOLEDO AND OHIO CENTRAL RAILWAY
OPERATED BY
THE TOLEDO AND OHIO CENTRAL RAILWAY
ST. MARYS BRANCH -- MAIN LINE
FROM STATION 1400+00 TO STATION 1500+00
SCALE 1 INCH = 200 FEET
OFFICE OF VALUATION ENGINEER, COLUMBUS, OHIO
JUNE 30, 1918

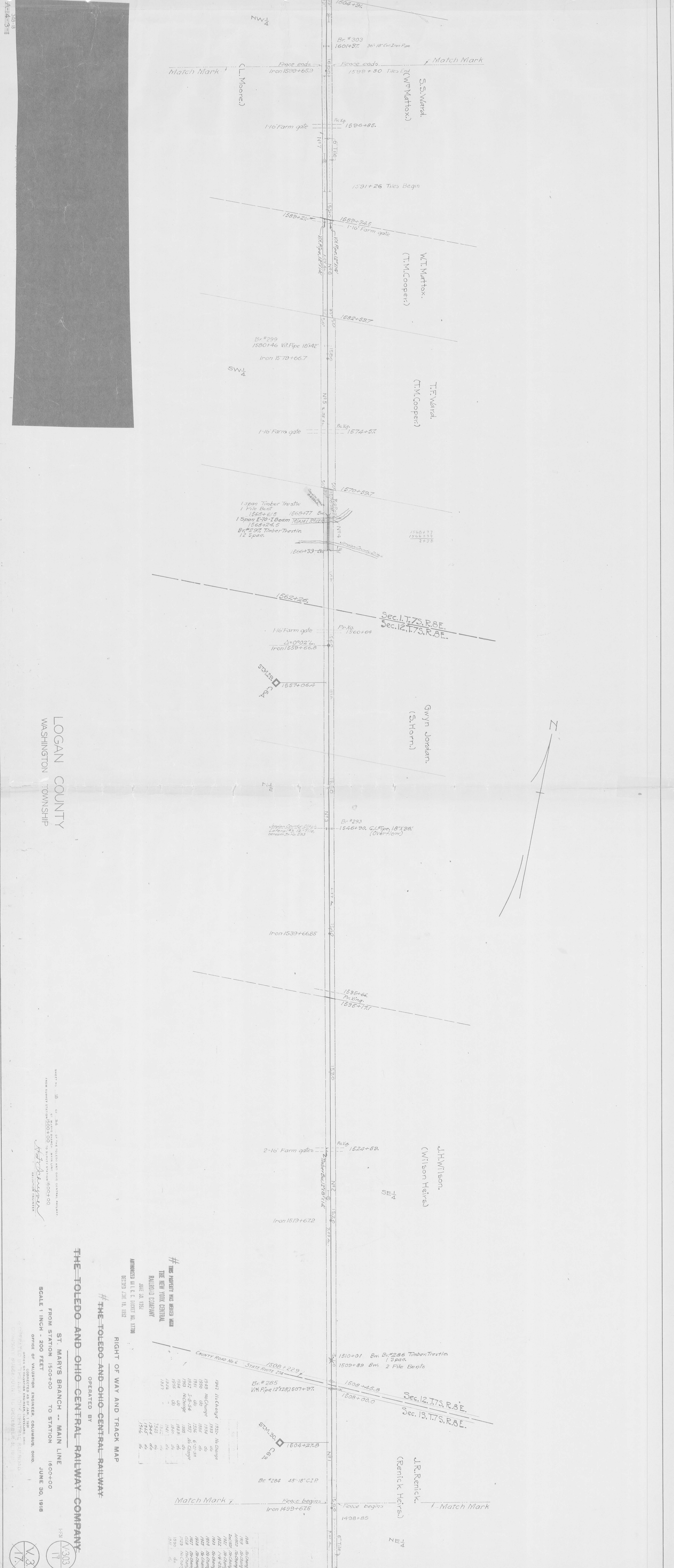
THE TOLEDO AND OHIO CENTRAL RAILWAY
OPERATED BY
THE TOLEDO AND OHIO CENTRAL RAILWAY
ST. MARYS BRANCH -- MAIN LINE
FROM STATION 1400+00 TO STATION 1500+00
SCALE 1 INCH = 200 FEET
OFFICE OF VALUATION ENGINEER, COLUMBUS, OHIO
JUNE 30, 1918

THE TOLEDO AND OHIO CENTRAL RAILWAY
OPERATED BY
THE TOLEDO AND OHIO CENTRAL RAILWAY
ST. MARYS BRANCH -- MAIN LINE
FROM STATION 1400+00 TO STATION 1500+00
SCALE 1 INCH = 200 FEET
OFFICE OF VALUATION ENGINEER, COLUMBUS, OHIO
JUNE 30, 1918

THE TOLEDO AND OHIO CENTRAL RAILWAY
OPERATED BY
THE TOLEDO AND OHIO CENTRAL RAILWAY
ST. MARYS BRANCH -- MAIN LINE
FROM STATION 1400+00 TO STATION 1500+00
SCALE 1 INCH = 200 FEET
OFFICE OF VALUATION ENGINEER, COLUMBUS, OHIO
JUNE 30, 1918

THE TOLEDO AND OHIO CENTRAL RAILWAY
OPERATED BY
THE TOLEDO AND OHIO CENTRAL RAILWAY
ST. MARYS BRANCH -- MAIN LINE
FROM STATION 1400+00 TO STATION 1500+00
SCALE 1 INCH = 200 FEET
OFFICE OF VALUATION ENGINEER, COLUMBUS, OHIO
JUNE 30, 1918

303
18



THE TOLEDO AND OHIO CENTRAL RAILWAY COMPANY

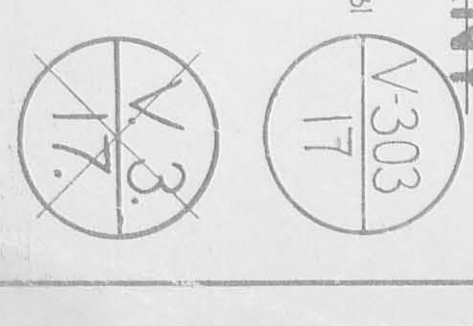
ST. MARYS BRANCH -- MAIN LINE
FROM STATION 1500+00 TO STATION 1900+00
SCALE 1" INCH = 200 FEET
OFFICE OF VALUATION ENGINEERS, COLUMBUS, OHIO
JUNE 30, 1918

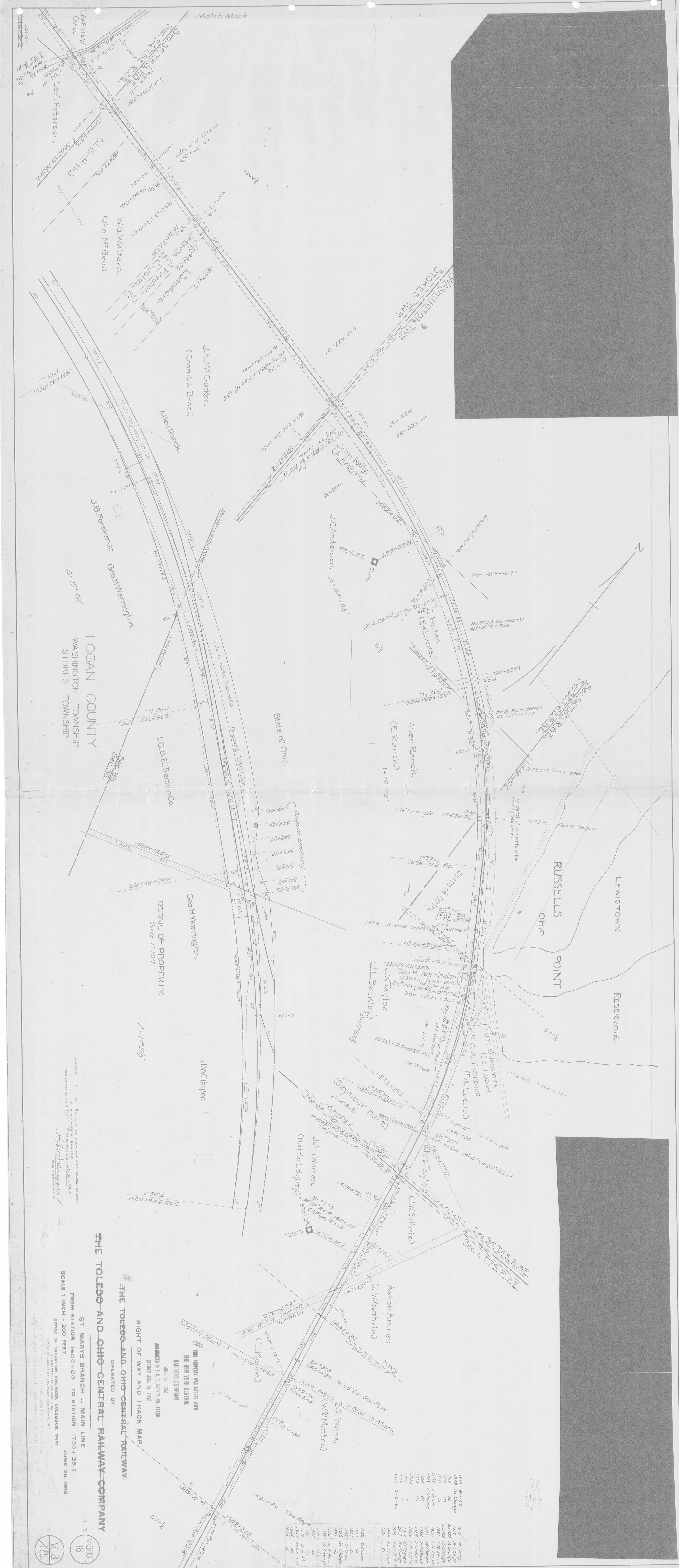
RIGHT OF WAY AND TRACK MAP
THE TOLEDO AND OHIO CENTRAL RAILWAY

OPERATED BY
THE PROPERTY WAS RECORDED WITH
THE NEW YORK CENTRAL
RAILROAD COMPANY
JUNE 30, 1912
ANTHONY W.L. & C. CORP. INC. 1770
DECEMBER 18, 1932

Station	Description	Year	Notes
1847	1 1/2' Change	1932	16 Change
1929	No Change	1932	do
1950	do	1935	do
1951	do	1935	do
1952	5'-8"-5'4"	1937	6'-2'-1'34"
1953	No Change	1938	do
1954	do	1938	do
1955	do	1938	do
1956	do	1938	do
1957	do	1937	do
1958	do	1937	do
1959	do	1937	do
1960	do	1937	do
1961	do	1937	do
1962	do	1937	do
1963	do	1937	do
1964	do	1937	do
1965	do	1937	do
1966	do	1937	do
1967	do	1937	do
1968	do	1937	do
1969	do	1937	do
1970	do	1937	do

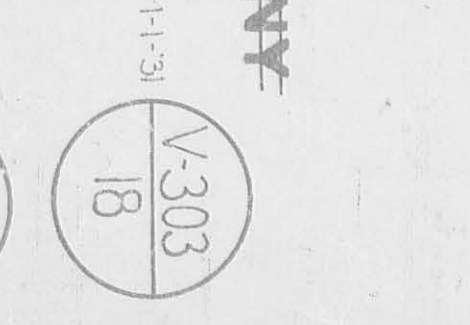
Station	Description	Year	Notes
1971	No Change	1937	do
1972	No Change	1937	do
1973	No Change	1937	do
1974	No Change	1937	do
1975	No Change	1937	do
1976	No Change	1937	do
1977	No Change	1937	do
1978	No Change	1937	do
1979	No Change	1937	do
1980	No Change	1937	do
1981	No Change	1937	do
1982	No Change	1937	do
1983	No Change	1937	do
1984	No Change	1937	do
1985	No Change	1937	do
1986	No Change	1937	do
1987	No Change	1937	do
1988	No Change	1937	do
1989	No Change	1937	do
1990	No Change	1937	do
1991	No Change	1937	do
1992	No Change	1937	do
1993	No Change	1937	do
1994	No Change	1937	do
1995	No Change	1937	do
1996	No Change	1937	do
1997	No Change	1937	do
1998	No Change	1937	do
1999	No Change	1937	do
2000	No Change	1937	do





LOGAN COUNTY
WASHINGTON TOWNSHIP
STOKES TOWNSHIP

THE TOLEDO AND OHIO CENTRAL RAILWAY COMPANY
ST. MARYS BRANCH -- MAIN LINE
FROM STATION 1600+00 TO STATION 1700+35.2
SCALE 1 INCH = 200 FEET
JUNE 30 1918



THIS PROPERTY WAS RECORDED WITH
THE NEW YORK CENTRAL
RAILROAD COMPANY
JUNE 30 1918
ANNOUNCED IN C. C. BOARDING NO. 17709
OCTOBER 18 1912

Station	Notes
1918	McChange
1919	McChange
1920	McChange
1921	McChange
1922	McChange
1923	McChange
1924	McChange
1925	McChange
1926	McChange
1927	McChange
1928	McChange
1929	McChange
1930	McChange
1931	McChange
1932	McChange
1933	McChange
1934	McChange
1935	McChange
1936	McChange
1937	McChange
1938	McChange
1939	McChange
1940	McChange
1941	McChange
1942	McChange
1943	McChange
1944	McChange
1945	McChange
1946	McChange
1947	McChange
1948	McChange
1949	McChange
1950	McChange
1951	McChange
1952	McChange
1953	McChange
1954	McChange
1955	McChange
1956	McChange
1957	McChange
1958	McChange
1959	McChange
1960	McChange
1961	McChange
1962	McChange
1963	McChange
1964	McChange
1965	McChange
1966	McChange
1967	McChange
1968	McChange
1969	McChange
1970	McChange
1971	McChange
1972	McChange
1973	McChange
1974	McChange
1975	McChange
1976	McChange
1977	McChange
1978	McChange
1979	McChange
1980	McChange
1981	McChange
1982	McChange
1983	McChange
1984	McChange
1985	McChange
1986	McChange
1987	McChange
1988	McChange
1989	McChange
1990	McChange
1991	McChange
1992	McChange
1993	McChange
1994	McChange
1995	McChange
1996	McChange
1997	McChange
1998	McChange
1999	McChange
2000	McChange

1918 6-1-18
1919 6-1-18
1920 6-1-18
1921 6-1-18
1922 6-1-18
1923 6-1-18
1924 6-1-18
1925 6-1-18
1926 6-1-18
1927 6-1-18
1928 6-1-18
1929 6-1-18
1930 6-1-18
1931 6-1-18
1932 6-1-18
1933 6-1-18
1934 6-1-18
1935 6-1-18
1936 6-1-18
1937 6-1-18
1938 6-1-18
1939 6-1-18
1940 6-1-18
1941 6-1-18
1942 6-1-18
1943 6-1-18
1944 6-1-18
1945 6-1-18
1946 6-1-18
1947 6-1-18
1948 6-1-18
1949 6-1-18
1950 6-1-18
1951 6-1-18
1952 6-1-18
1953 6-1-18
1954 6-1-18
1955 6-1-18
1956 6-1-18
1957 6-1-18
1958 6-1-18
1959 6-1-18
1960 6-1-18
1961 6-1-18
1962 6-1-18
1963 6-1-18
1964 6-1-18
1965 6-1-18
1966 6-1-18
1967 6-1-18
1968 6-1-18
1969 6-1-18
1970 6-1-18
1971 6-1-18
1972 6-1-18
1973 6-1-18
1974 6-1-18
1975 6-1-18
1976 6-1-18
1977 6-1-18
1978 6-1-18
1979 6-1-18
1980 6-1-18
1981 6-1-18
1982 6-1-18
1983 6-1-18
1984 6-1-18
1985 6-1-18
1986 6-1-18
1987 6-1-18
1988 6-1-18
1989 6-1-18
1990 6-1-18
1991 6-1-18
1992 6-1-18
1993 6-1-18
1994 6-1-18
1995 6-1-18
1996 6-1-18
1997 6-1-18
1998 6-1-18
1999 6-1-18
2000 6-1-18

Thomas Wallace.

Thomas Houchins
(Wm Rose)

Ed. Houchins.
(Frank Houchins)

S.M. Howell
(Claude Bailey)

Geo. W. Mc Millen
(Claude Bailey)

R.J. Morris.
(Luther Black)

Wm D. Jervis.
(Geo. Ryder)

LAKE VIEW
OHIO.

RESERVOIR

Br. #341
1/2" Pipe, 12" x 26', 1800+01.
Cl. Pipe, 18" x 24', 1799+52.1

Br. #338
1/2" Pipe, 12" x 30', 1753+32.
1/2" Pipe, 18" x 18" Overflow

Br. #334, part of County, Ohio
1/2" Pipe, 24" x 40', 1762+16.
1/2" Pipe, 18" x 40', 1761+34.
Br. #333

Br. #329
1/2" Pipe, 10' x 30', 1736+105.

Br. #327
1/2" Pipe, 18' x 30', 1726+86.

1726+86. Wm. D. Couplins.
1726+86. Wm. D. Couplins.
1726+86. Wm. D. Couplins.

Br. #325, Timber Trestle, 7' x 4'
10' span, 36' long
4 Pile Beets

Mrs. L. C. Pugh, 330'
10' span, 36' long
4 Pile Beets

W. G. Walters
1700+36.2

Match Mark 1
1796+69

1-16 Farm gate 1791+25

Iron 1779+5246

1773+84 2-16 Farm gates

1769+098
1769+098
1769+098
1769+098
1769+098

1768+098

Iron 1759+5292

1755+553

1-16 Farm gate 1746+17

1744+70

1739+295

1729+220.9

1724+53 Fence begins

Iron 1719+5939

1714+13 Fence ends

1708+18 Fence ends

1706+95.6 P.S. (592)

1704+96 Br. #325, Timber Trestle, 7' x 4'
10' span, 36' long
4 Pile Beets

1700+36.2

1697+68

Match Mark 7

LOGAN COUNTY
STOKES TOWNSHIP

THE TOLEDO AND OHIO CENTRAL RAILWAY COMPANY

RIGHT OF WAY AND TRACK MAP

OPERATED BY

THE NEW YORK CENTRAL
RAILROAD COMPANY

ST. MARYS BRANCH -- MAIN LINE

FROM STATION 1700+95-2 TO STATION 1796+69

SCALE 1 INCH = 200 FEET

JUNE 30, 1916

OFFICE OF VALUATION ENGINEER, COLUMBUS, OHIO

STATION ENGINEER

DATE

1916

1916

1916

1916

1916

1916

1916

1916

1916

1916

1916

1916

1916

1916

1916

1916

1916

1916

1916

1916

1916

1916

1916

1916

V.303

V.303

V.303

V.303

V.303

V.303

V.303

V.303

V.303

V.303

V.303

V.303

V.303

V.303

V.303

V.303

V.303

V.303

V.303

V.303

V.303

V.303

V.303

V.303

V.303

V.303

V.303

V.303

V.303

V.303

V.303

V.303

V.303

V.303

V.303

V.303

V.303



SANTA FE
OHIO.

LOGAN CO. STOKES TWP.
Sec. 30, T.6S, R.8E.
Sec. 25, T.6S, R.7E.
AUGLAIZE CO. CLAY TWP.

AUGLAIZE COUNTY
CLAY TOWNSHIP

LOGAN COUNTY
STOKES TOWNSHIP

No. Change	No. Change	No. Change	No. Change
1847	1332	1916	1916
1848	1333	1917	1917
1849	1334	1918	1918
1850	1335	1919	1919
1851	1336	1920	1920
1852	1337	1921	1921
1853	1338	1922	1922
1854	1339	1923	1923
1855	1340	1924	1924
1856	1341	1925	1925
1857	1342	1926	1926
1858	1343	1927	1927
1859	1344	1928	1928
1860	1345	1929	1929
1861	1346	1930	1930
1862	1347	1931	1931
1863	1348	1932	1932
1864	1349	1933	1933
1865	1350	1934	1934

THIS PROPERTY WAS MERGED WITH
THE NEW YORK CENTRAL
RAILROAD COMPANY

JUNE 30, 1932
AUTHORIZED IN U.S.C. SOCKET NO. 17700
RECORDED JUNE 18, 1932

RIGHT OF WAY AND TRACK MAP

THE TOLEDO AND OHIO CENTRAL RAILWAY COMPANY
OPERATED BY

ST. MARYS BRANCH -- MAIN LINE
FROM STATION 1900+00 TO STATION 2000+38.
SCALE 1 INCH = 200 FEET
JUNE 30, 1918

OFFICE OF VALUATION ENGINEER, COLUMBUS, OHIO
CORRECTED AS OF JAN. 1, 1931
OFFICE OF VALUATION ENGINEER, CLEVELAND, OHIO
CORRECTED AS OF JAN. 1, 1931

Auglaize Co. Clay Twp.
Stokes Twp. Logan Co.

Auglaize Co. Stokes Twp.
Stokes Twp. Logan Co.

Auglaize Co. Stokes Twp.
Stokes Twp. Logan Co.

Auglaize Co. Stokes Twp.
Stokes Twp. Logan Co.

Auglaize Co. Stokes Twp.
Stokes Twp. Logan Co.

Auglaize Co. Stokes Twp.
Stokes Twp. Logan Co.

Auglaize Co. Stokes Twp.
Stokes Twp. Logan Co.

Auglaize Co. Stokes Twp.
Stokes Twp. Logan Co.

Auglaize Co. Stokes Twp.
Stokes Twp. Logan Co.

Auglaize Co. Stokes Twp.
Stokes Twp. Logan Co.

Auglaize Co. Stokes Twp.
Stokes Twp. Logan Co.