

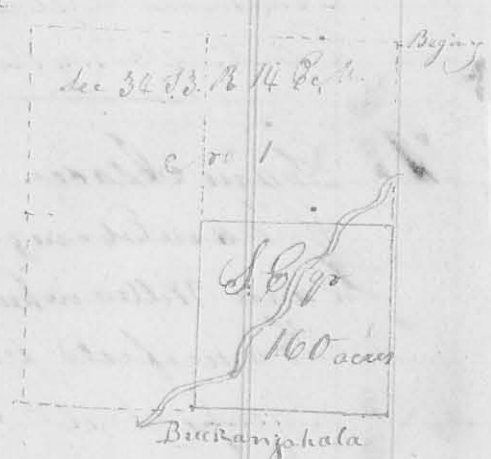
A record of the surveys made by the Surveyor of Logan County Ohio.

(8153)

Oct. 12<sup>th</sup> 1822

✓ Survey No 1

Surveyed for David B. Carpenter. Beginning at the N.E. corner of Section 34 Town 3 Range 14 a white oak 160<sup>th</sup> links distant 11 inches in diameter, a white oak 138<sup>th</sup> W 10 links dist. 10 inches in diameter, thence West 40 chains and set a stake, continued to the N.W. corner of said section in a prairie; thence South 80 chains to the S.W. corner of said Sec a white oak 11 inches in diameter 165<sup>th</sup> E 24 links dist. or 80<sup>th</sup> W 50 links dist. thence east 40 chains set a stake in the edge of a mill-pond, continued 80 chains to the N.E. corner a white oak 17 inches diam. 153<sup>th</sup> E 31 links dist. the bearing true at the latter stake area black oak 18 inches diam. or 59<sup>th</sup> W 39 links dist a white oak 30 in. diam. or 33<sup>th</sup> E 66 links dist. from this corner 40 chains set a stake continued 80 ch. to the stake set in the first line. returned to the stake in the center a white oak 21 inches diam or 8 links dist thence east 40 chains and covered in the east line of the Sec. an elm divided into 3 trunks 163<sup>th</sup> E 30 links dist. thence South to the S.E. corner of said Sec. to establish the corners of the South east quarter of Sec 34 Town 3 Range 14 of the 9<sup>th</sup> Meridian - There being no westerly variation from the original courses.



James Binley }  
Thomas Powell } C.C.

James M. Harmon  
Surveyor of Logan Co.

Decm. 9<sup>th</sup> 1822.

(8154)

✓ Survey No 2

Surveyed for Jesse Garwood; Beginning at two sugar trees and a beech or 30<sup>th</sup> W 44 poles from the north east corner of James Calderwoods Survey on the Mad River or 3137 and S.E. corner to said Calderwoods Survey or 3139; thence or 75<sup>th</sup> W 180 poles to a stone in the Sandusky road; witness trees a sugar tree 168<sup>th</sup> E 47 links dist. a beech or 43<sup>th</sup> E 60 links (crossed the Sugar camp branch 90 poles from the beginning and the river at 62 poles) thence or 16<sup>th</sup> E with said road crossing the river at 8 poles 120 poles to two beeches on said road; thence or 75<sup>th</sup> E (crossing a Spring branch at 14 poles, the Sugar camp branch at 190 poles 220 poles to

a Sugar tree and blue hedge  
 thence South 34 poles to a  
 Walnut and Lynn thence  
 S 43° W 70 poles to 2 hickories  
 and a beech; thence S 15° W  
 25 poles to the beginning  
 containing one hundred  
 and fifty three acres  
 the degree easterly variation  
 from the original lines



Thomas Dickinson }  
 Thomas McKray } C.C.

James M. Harmon  
 Surveyor of Logan County

Decem. 11<sup>th</sup> 1822

**Survey No 3**

Surveyed for Nicholas Stillwell Sen. Beginning at a stake in a  
 line of David Stillwell's land on the bank of a branch south of John House  
 where I caused a stone to be put; thence N 66° W up said branch 40 poles to  
 a stake in a meadow on the bank of said branch; thence S 65° W (cross-  
 ing said branch at 2 poles) 20 poles to 2 small elms; thence S 10° E 12 poles to  
 2 elms on the banks of said branch, one on this  
 and one on that side; thence S 55° E 24 poles  
 to a hickory and blue ash; thence S 15° E 6 poles  
 to a beech; thence S 55° E 10 poles to an ironwood  
 and dogwood; thence N 12° W 46 poles to the begin-  
 ning containing 10 acres



John Reed }  
 Nicholas Stillwell jun } C.C.

James M. Harmon  
 Surveyor S. C.

Decem. 30<sup>th</sup> 1822

8155

**Survey No 4**

Surveyed for Martin Harmon Beginning at 2 buck eye stump  
 and a hackberry stump in the burying ground of the locality of  
 Friends at Gosport being the north westerly corner of Samuel  
 Davis' survey No 3216 and easterly corner to Duncan & McArthur's  
 survey No 4413 and is on the old Indian trace which leads from  
 Isaac Zani's place on Mad River to the head of Darby's branch, where  
 I caused a stone to be placed, which bears S 78° W 15.3 poles from a stone  
 thence S 15° W allowing 2 degrees variation westerly from the original  
 line

(line) 84 poles <sup>cropping a branch at 34 (3)</sup> to a bay artree and an elm (the elm is  
 down, and one of the sugars is dead) South west  
 corner to said Davis' said survey, and <sup>in the</sup> north  
 east corner to James Mc Nutts survey r<sup>o</sup> 4195  
 and 4604; thence N 75° W 26 1/2 poles to a buckeye  
 and hickory stumps in said line in said elm  
 - woods field thence N 15° E 85 poles <sup>cropping a branch at 32 poles</sup> to a stone corner  
 in the east line of a tract of land deeded by C. McArthur  
 to M. Harmon. Thence S 75° E 22 1/2 poles to the  
 beginning containing thirteen and one fourth  
 acres a part of Duncan McArthur's survey r<sup>o</sup> 4413 - There is one  
 degree westerly variation from all the above lines except the first  
 from which there is 2 degrees



Joshua Harmon }  
 Robert Harmon }

James M. Harmon  
 Surveyor of Logan Co.

Decem. 30<sup>th</sup> 1822

Survey N<sup>o</sup> 5

Surveyed for Robert Harmon; Beginning at a stone & buckeye stumps  
 and a hickory stump in the burying ground of the Society  
 of Friends at Goshen north westerly corner to Samuel  
 Davis' survey r<sup>o</sup> 3216 and north easterly corner to Duncan  
 McArthur's survey r<sup>o</sup> 4413 (and beginning corner to the  
 preceding survey) thence N 15° W (2° westerly variation)  
 84 poles (cropping a branch at 34 poles) to two sugar trees  
 and an elm South west corner to Davis' said survey  
 thence N 75° W 1 pole to a stake thence S 7° W 44  
 poles to a buckeye blue ash and sugar tree; thence  
 S 83° E 9 poles to a large rock in a road thence  
 N 8 1/4° E 44 poles to a stake thence N 5 1/4° E 84 poles  
 to the beginning containing three and one  
 - half acres part of Davis' survey r<sup>o</sup> 3216 and  
 of James Mc Nutts survey r<sup>o</sup> 4195 & 4604



Joshua Harmon }  
 Richmond Harmon }

James M. Harmon  
 Surveyor of Logan Co.

The original of this page is blank or missing.



Feb. 27<sup>th</sup> 1823

151

✓ Survey 08

I divided the undescr'd tract of land for Charles and George  
creeds for it being part of survey no 4972 and bounded by the  
lines as follows beginning at 2 black oaks and cherry tree (one of  
the oaks is fallen down and the cherry tree is broken off about 6 feet high  
thence  $N 28^{\circ} E$  188 poles to 4 hickories thence

$N 70^{\circ} E$  144 poles to 2 black oaks and  
white oak thence  $N 20^{\circ} E$  240 poles  
to a stake thence  $S 70^{\circ} W$  122 poles  
to a stake thence  $N 28^{\circ} W$  210  
poles to 3 hickories thence  $N 20^{\circ} W$   
256 poles to the beginning con-  
taining 422 acres

The division line begins at the  
beginning corner of the outlines  
thence  $N 68^{\circ} E$  78 poles to 3 white  
oaks thence  $N 37^{\circ} E$  100 poles  
to a stone thence  $N 51^{\circ} E$  40 poles  
to a cherry tree thence  $N 2^{\circ} E$  26  
poles to a stone thence  $N 68^{\circ} E$   
100 poles to a cherry tree, 2 papayas  
and black oak in the line which runs  $N 20^{\circ} E$  240 poles to a stake  
76 poles from said stake - The part on the north side contains  
106 acres and that on the south 260 1/2 - difference 99 acres

Charles &  
George Creeds, Co

James Williamson Surveyor

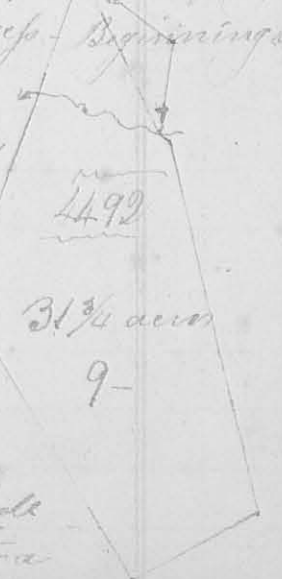


Feb. 29<sup>th</sup> 1823

(816)

✓ Survey 09

Surveyed for Hampton Burges Beginning at  
a stone South westerly corner of Thomas Stewart's  
land and North westerly corner of William Selkirk's  
land thence  $N 28^{\circ} W$  84 poles to a cherry tree and  
oak and white oak westerly corner of said Stewart's  
land thence (the white oak is cut down) thence  
 $N 20^{\circ} E$  76 poles to a red oak thence  $N 70^{\circ} E$  31 poles  
to a stake from which 2 small oaks bear  $N 67^{\circ} E$   
19 links distant thence  $N 3^{\circ} W$  88 poles to a small  
black walnut and hickory thence  $N 42^{\circ} W$  8 poles to a



stone on the north side of a small creek thence  $S 28^{\circ} E$  20 poles to a  
 stone thence  $S 12^{\circ} W$  25 poles to the beginning containing 30 1/2 acres  
 part of Jesse Davis survey c r 4492 on the waters of Mad River

John McNeal  
 William McNeal } c.c.

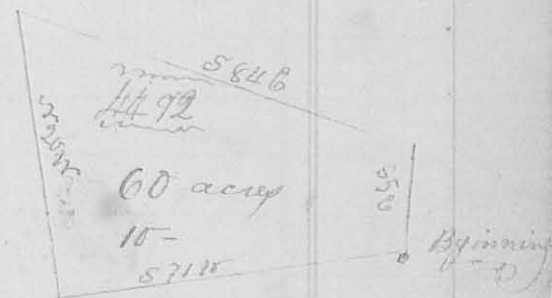
James McHarmon  
 Surveyor of Logan County

March 8 1823

(3161)

Survey c r 10

Surveyed for Samuel Scott Beginning at  
 a stone where a large rock bears  $N 10^{\circ} E$  33 links distant, in the  
 South line of Williams & McNeal's land: thence with said line  
 and course there of  $S 10^{\circ} W$  allowing  $1/2^{\circ}$  variation eastward from said  
 line, thence the present bearing is  $S 7 1/2^{\circ} W$  129 poles to 3 white  
 oaks (2 of which I ~~mark~~ ~~mark~~ original corner to said McNeal's  
 land thence  $S 20^{\circ} W$  156 poles to 3 small  
 hickories in the westerly line of McNeal's  
 land thence  $S 81^{\circ} E$  154 poles to a stone  
 in a barn: thence  $S 5^{\circ} E$  37 poles  
 to the beginning containing sixty  
 acres part of Jesse Davis survey c r 4492



John McNeal  
 William McNeal } c.c.

James McHarmon Surveyor c.c.

March 10<sup>th</sup> & 11<sup>th</sup> 1823

Survey c r 11

(3162)

Surveyed and divided sections 17 and 22  
 in Town No 5 Range r 13 E. M. R.  
 for Peter and John Kelly as under spe-  
 cified Beginning at a black oak 18 inches  
 in diameter  $S 27 1/2^{\circ} W$  50 links dist a white  
 oak 10 inches in diam.  $S 45^{\circ} W$  18 links  
 dist thence south between sees 23 & 29  
 320 poles to the corner of sees 22, 23, 28 & 29 a white oak 18 inches in diam  
 $N 34^{\circ} W$  150 links dist thence east between sees 21, 22 & 23 (passing the  
 corner of sees of 16, 17, 22 & 23 at 318 poles) continued between sees 16 & 17  
 344 poles in the whetlines to the corner of sees 16 & 17 in Sudlow's  
 line a black oak 16 inches in diam.  $S 7 1/2^{\circ} W$  119 links dist. thence  
 with Sudlow's line  $S 20^{\circ} W$   $1/2^{\circ}$  westerly variation to the c. r. c. corner



corner of sec. 23 & 24 white oak 24 inches in diam. or 82 W 28 links  
 dist. thence west between sec. 23 & 24 232 poles to the beginning  
 containing 587 3/4 acres - The division line begins at a white  
 oak white oak 15 inches in diam. west 11 links a white oak 18 inches  
 in diam. S 73 E 21 links dist. in the north line of sec 23 26 poles from  
 the N.E. corner thereof thence W 12 1/2 E 116 poles to a white oak thence  
 S 24 E 58 poles to a stone in a prairie thence south 58 poles to near the  
 bank of Maid River thence S 12 1/2 E 88 poles to the south line of said  
 sec. a black oak 12 inches in diam. S 76 E 23 links dist. - The part  
 on the west side of the division line contains 347 3/4 acres - the other  
 240 acres of

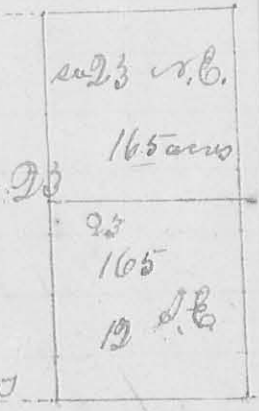
James Williamson Surveyor L.C.

8163

April 3<sup>rd</sup> 1826

Survey No 19

Surveyed and divided sec. 23 in Range 14 Co. M. N.  
 for William Davis and Robert Campbell beginning at the  
 N.W. corner of Sec 23 original corner to sec. 22, 23, 28 & 29 a white oak  
 14 inches in diam. W 76 E 22 links dist. a white oak 14 inches in diam.  
 S 35 W 17 links dist. thence east between sec. 22 & 23 with the original  
 line 16 1/2 poles to the quarter sec. corner  
 a white oak 10 inches in diam. or 38 E  
 24 links dist. continued with said  
 line 16 1/2 poles further to the S.E. corner  
 of said sec. & corner to sec. 16, 17, 22 & 23,  
 a white oak corner tree thence north  
 between sec. 17 & 23 162 poles, passed a <sup>10 inches diam.</sup> ~~Pyram~~  
 Hickory the original quarter section  
 corner between sec. 17 & 23 324 poles to the corner of sec. 17, 18, 23 & 24  
 a white oak 24 inches in diam. S 18 W 32 links dist. a white oak  
 14 inches in diam. S 63 E 13 links dist. thence west between  
 sec. 23 & 24, passed the quarter sec. corner between sec. 23 & 24 at  
 16 1/2 poles a white oak 16 inches in diam. S 73 E 36 links dist. a white  
 oak 14 inches in diam. S 76 W 17 links dist. 326 poles to the corner  
 of sec. 23, 24, 29 & 30 a white oak 14 inches in diam. S 76 E 22 links  
 dist. a white oak 14 inches in diam. S 35 W 17 links dist. return  
 to the last named or sec. corner thence south 16 1/2 poles and struck up  
 a stake in a wet prairie & continued 162 poles further to the first

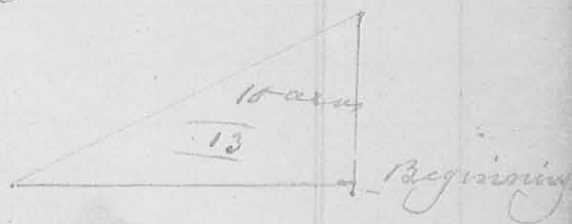




183  
mentioned quarter sec. comes in the south line of the section  
then returned to the stake in the prairie thence east 165 to  
the east line of the sec. near the hickory formerly mentioned  
place where another hickory ~~tree~~ 10 in diam. bears west 8 links  
dist - The line from the stake in the prairie divides the east  
half of said sec into 2 equal parts containing each 165 acres

James W. Warriman, S. L. C.  
April 4<sup>th</sup> 1823 Survey No. 13 (8164)

Surveyed at the request of Robert Casbolt  
and William Davis beginning at the quarter section corner  
between sections 17823 in Town 3 Range 12 E at a hick  
-ory 10 inches in diam. west 8 links dist. Thence ~~west~~ north  
between sec. 17823 with the original  
line 40 poles to a stake in a prairie  
thence  $66\frac{1}{2}$  or 90 poles to a stake in  
the same prairie and in the line  
between the S.E. and N.E. quarters  
of sec 23 in said Town and Range  
thence east with said quarter section line 80 poles to the beginning  
containing ten acres, a right angled triangle in the S.E. corner  
of the north east quarter of said section



Ja. W. Warriman Surveyor Logan Co.

April 4<sup>th</sup> 1823 Survey No. 14 (8164)

Surveyed 25 acres of land for William  
Davis, who presented to me a certificate from me to  
McColloch Auditor of Logan County, bearing date at  
Bellefontaine March 10<sup>th</sup> 1823 certifying that there was  
that day twenty five acres of land sold to William Davis  
for the taxes interest and penalty for the years 1820, 1821  
and 1822, entered for taxation in the name of Henry  
Heifer in Range 14 Town 3 and Sec. 17 north west  
quarter, to be laid off by metes and bounds, by line par  
-allel with the lines of the tract, in as near a square  
form as practicable; Whereupon I proceeded to, and laid



off twenty five acres in the north west corner of said section quarter section; Beginning at the corner between sec<sup>s</sup> 17, 18, 23 & 24 in said Town and Range original corner a white oak 24 inches in diam.

Beginning



thence  $S 88^{\circ} W$  33 links dist. a white oak 14 inches in diam.  $S 63^{\circ} E$  13 links dist thence east between sec<sup>s</sup> 17 & 18 with the original line  $6 \frac{3}{4}$  poles to a stake in a prairie where a bur oak 20 inches in diam. bears  $S 86^{\circ} E$  14 1/2 links dist. thence  $S 63^{\frac{1}{2}}$  poles to a dead white oak 24 inches in diam. corner tree thence west  $6 \frac{3}{4}$  poles to the line between sec<sup>s</sup> 17 & 23 a dead white oak 22 inches in diameter  $S 22^{\circ} W$  19 links dist. thence with said <sup>line</sup>  $6 \frac{3}{4}$  poles to the beginning containing 25 acres in a square form in said quarter section as of record.

J. A. Wellman S. L. C.

April 28<sup>th</sup> 1826

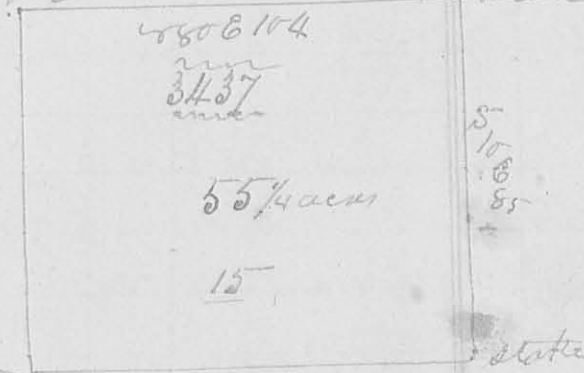
(8169)

Survey No 15

Surveyed for Isaac Zane begin-

ning at an elm and blue ash on the bank of a small creek and in the vicinity of William Cochran's survey no 3437 thence  $S 80^{\circ} E$  10 1/4

Beginning



poles to a buck near the Sandusky road. thence  $S 10^{\circ} E$  85 poles to a stake on the west side of said road. thence  $S 80^{\circ} W$  10 poles to a small elm and sugar tree in the line above named thence with said line  $S 10^{\circ} W$

85 poles to the beginning containing fifty five and one fourth acres part of Cochran's survey no 3437

Isaac Zane } Lt.  
John Zane }

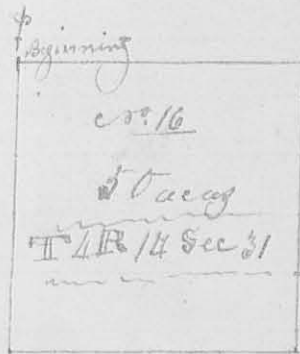
James Wellman  
Surveyor of Floyd County

May 15<sup>th</sup> (mo.) 19 1823

Survey No. 16 817

I made the following survey for Nicholas Dickrell who presented to me a certificate from Croak & Collock Auditor of Logan County bearing date at Bellefontaine March 10<sup>th</sup> 1823 and certifying that there was that day fifty acres of land sold to Nicholas Dickrell for the sum of \$8.59.6, the tax interest and penalty for the years 1820 & 21 with the tax of 1822 (on) being part of a tract of land entered for taxation in the name of William Hunt by of south west quarter of section 31 in Town. 4 & Range 14, to be laid off by meter and bounds by lines parallel with the lines of the tract in as near a square as practicable. — Whereupon I proceeded to lay off fifty acres in a square in the north-west corner of the S.W. 1/4 of said sec. beginning the northwest corner of the south west qtr. of said sec. a white oak 14 inches in diam.  $N 53^{\circ} E$  29 links dist.

thence east 89.5 poles a white oak 12 inches in diam.  $S 28^{\circ} 35'$  links dist. thence south 89.5 poles to a white oak 24 inches in diam.  $S 32^{\circ} W$  31 links dist. thence west 89.5 poles to a stake in a prairie and in the original line, thence with said line north  $7/2$  (variation) 89.5 poles to the beginning containing fifty acres

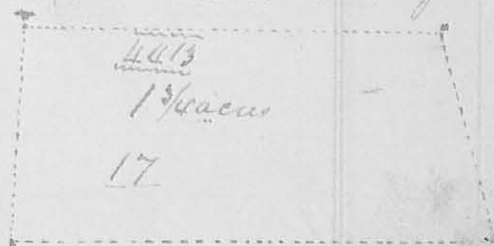


Jas. McHarron Surveyor

7<sup>th</sup> mo (July) 12<sup>th</sup> 1823

Survey No. 17

Surveyed for the Society of Friends, beginning at a stone and dog wood and dog wood north westerly corner to a lot of ground sold by Martin Marmon to said Society and north westerly corner to a lot of land conveyed by Duncan McArthur to said Marmon thence with the north line of said lot of land



$S 75^{\circ} E$  passing a stone at 23 1/2 poles, easterly corner to Duncan McArthur's survey or 44 1/2 25.8 poles to a stone, thence north 12 poles to a stone. Thence  $N 75^{\circ} W$  22 poles to a stone red bud ash and white oak in the easterly line of Martin Marmon's land thence with said line  $S 15^{\circ} W$  12 poles

" to the beginning containing one acre and three fourths part " of survey is 1823  
 J. W. McCarmon & C. Sawyer

9<sup>th</sup> mo. (Sept) 25<sup>th</sup> 1823

✓ Survey No. 18

(8171)

Surveyed 458 acres of land for

Joseph Stokes, beginning at the southeasterly corner of George McCradie's survey or 3755, (originally 2 sugar trees and an elm the sugar trees being dead 2 beech and black oak are marked) thence or 36° 8' 218 poles crossing a branch at 134 poles to 2 sugar trees and beech - thence or 38° W 348 poles to a bur oak black ash and white ash in the flat branch

(so called) and in the east line of Thomas Seay's survey or

545 thence or 52° W

218 poles to an ash

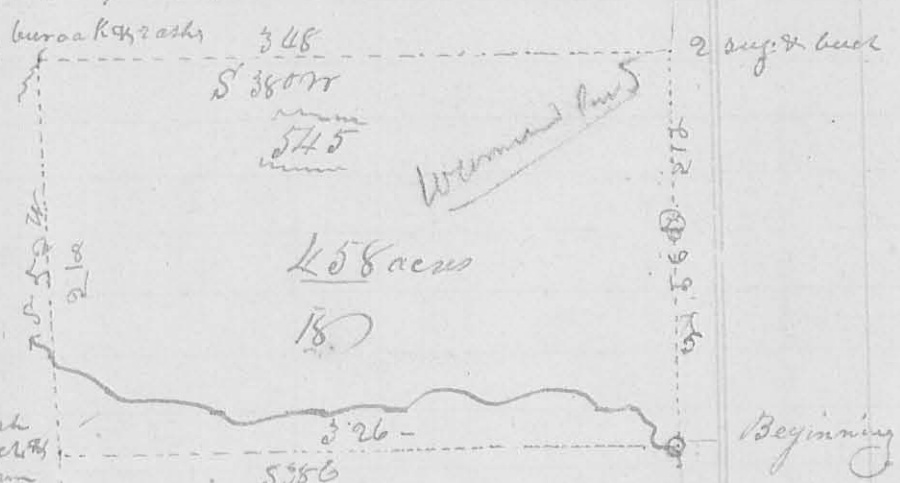
beech and elm in the east line of McCradie's said

survey - thence with said line or 38° 6' 326 poles to the beginning con-

taining 458 acres being the south end of Thomas Seay's survey or 545 - 42 on the waters of Darby's Creek - 42 easterly variation being allowed from the original lines

David Warner  
 John Sharp  
 Grace Warner marker

James W. McCarmon  
 Surveyor of Logan County



9<sup>th</sup> mo. (Sept) 25<sup>th</sup> 1823

✓ Survey No. 19

(8171)

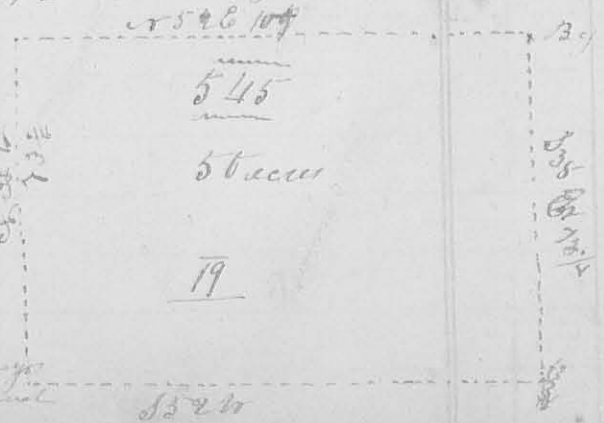
Surveyed 56 acres of land for Joseph

Stokes beginning at a sugar tree, ash, and beech stumps of the trees of the north east corner of Thomas Seay's survey or 545 thence with the east line of said survey

or 38° 8' 73 1/2 poles to a bur oak white ash and black ash in a branch

thence or 52° W 109 poles to 2 beech and sugar trees - thence or 38° W

73 1/2 poles to 2 sugar trees and beech in the north line of Seay's said



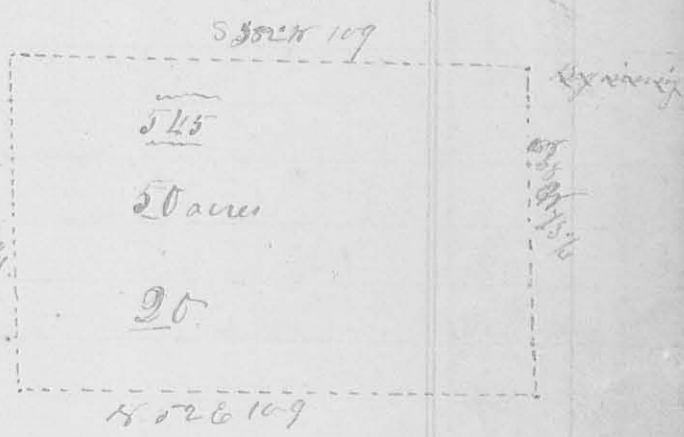


Levi's said survey thence  $N 52^{\circ} E 109$  poles to the beginning containing 50 acres in the  $N.E.$  corner of Thomas Leas survey on the waters of Darby's creek  $N 52^{\circ} E$  -  $42'$  easterly variation

David Warner }  
 John Sharp }  $66$  (Assessors & Clerks  
 Isaac Warner marker Surveyor of Logan County

9<sup>th</sup> mo. (Sept. 26<sup>th</sup> 1823) Survey N<sup>o</sup> 20. (8171)

Surveyed 50 acres of land for Joseph Stokes; beginning at 3 buckeyes from one root of the trunks are some decayed, I marked 2 black ash, all standing on the east bank of Beaver run of Darby's creek the north east corner of George McBride's survey  $N 31^{\circ} 5'$  thence  $\{begin\}$   $S 35^{\circ} E$  with the east line of all  $66$  =  $66$  acres said survey  $73\frac{1}{4}$  poles to an ash tree, and buckeye thence  $N 52^{\circ} E 109$  poles to 2 beeches and sugar tree, thence  $N 38^{\circ} W 73\frac{1}{4}$  poles to 2 sugar trees and a bush in the north line of Levi's survey  $N 52^{\circ} E$  - thence with said line  $N 52^{\circ} W 109$  poles to the beginning containing 50 acres in the north west corner of Thomas Leas survey  $N 52^{\circ} E$  on the waters of Darby's creek -  $42'$  easterly from the original line allowed.



David Warner }  
 John Sharp }  $66$  J. W. Harmon  
 Isaac Warner marker Surveyor of Logan County &

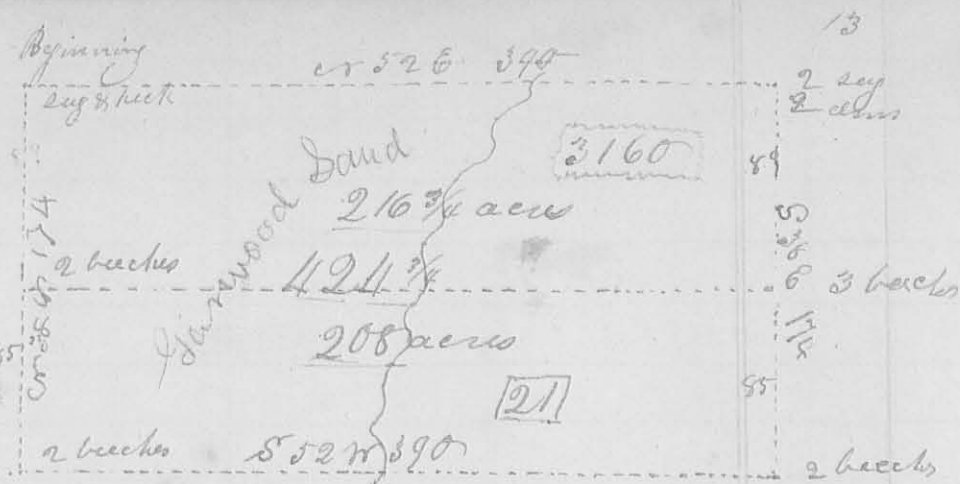
9<sup>th</sup> mo. (Sept. 26<sup>th</sup> 27<sup>th</sup> 1823) Survey N<sup>o</sup> 21. (8172)

Surveyed and divided 42  $\frac{3}{4}$  acres of land for Jose H. Garwood beginning at the south west corner of George McBride's survey  $N 31^{\circ} 5'$ , originally 2 buckeyes, they being dead a sugar tree and hickory marked, thence  $N 25^{\circ} 28' 20$  poles crossing beaver run of Darby's creek at 25 to 2 sugar trees and 2 clump easterly to McBride's said survey, thence  $S 38^{\circ} E 124$  poles to 2 beeches easterly corner to Levi Hollinsworth's survey  $N 31^{\circ} 5'$  thence  $N 52^{\circ} W 390$  poles (crossing said branch at 2  $\frac{3}{4}$  poles to

1866  
 1823  
 43



2 beeches southerly  
corner to Hollins  
= worth's said  
survey; thence  
cr 88 W 174 poles  
to the beginning  
containing 424 3/4  
acres the whole



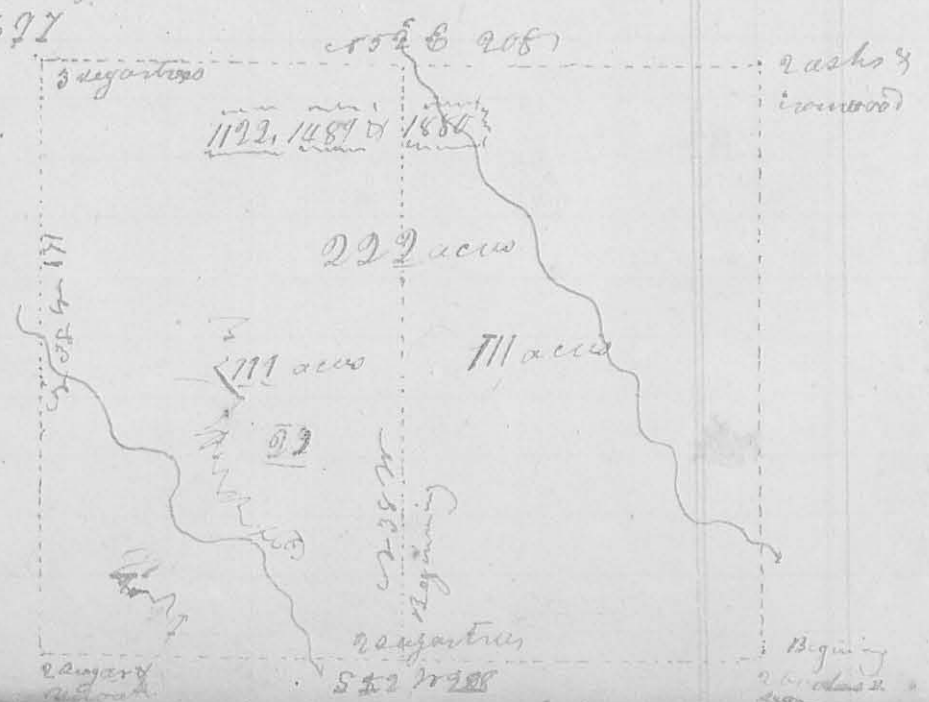
of Levi Hollinsworth's said survey on the waters of Darby's  
Creek - The division line begins <sup>at 2 beeches</sup> in the westerly line S 88  
89 poles from the beginning - thence cr 52 E 390 poles cross-  
ing beaver run to 3 beeches in the easterly line of said  
survey, making 216 3/4 acres on the northerly side and  
208 acres on the south side of the division line -  
3/4 of a degree easterly variation from the original  
lines were allowed

Jonathan Garwood }  
John Bishop } 66  
Daniel Garwood makes }  
Ja. W. Mearns  
Surveyor of Logansport

9<sup>th</sup> mo. (Sept) 27<sup>th</sup> 1823 ✓ SURVEY N<sup>o</sup> 22

Surveyed 222 acres of land for  
Jose H. Garwood, beginning at 2 beeches & sugar trees S.W. corner  
to Lalan Yancy's survey cr 46 S 688 thence S 52 W 208 poles crossing a  
branch at 154 poles, to 2 sugar trees and red oak S.E. corner to Peter  
Pelham's survey cr 46 77

thence cr 38 W 171 poles  
to 3 sugar trees in the  
east line of Pelham's  
said survey thence  
cr 52 E 208 poles  
crossing a branch at  
104 poles to 2 ash and  
iron wood in the  
west line of Yancy's  
said survey; thence  
with said line



14 53° 17' 171 poles to the beginning containing 222 acres; being the south end of Henry Kapsie's survey on the waters of Darby's Creek c 1722, 1759 & 1850 - Run a division line beginning at two sugar trees, beech, and ironwood, in the south line 104 poles from the beginning corner; thence  $\text{ex } 35^\circ \text{ N } 171$  poles to a lym and black ash in the south side of a branch and an elm on the north side thereof - 42' easterly from the original lines

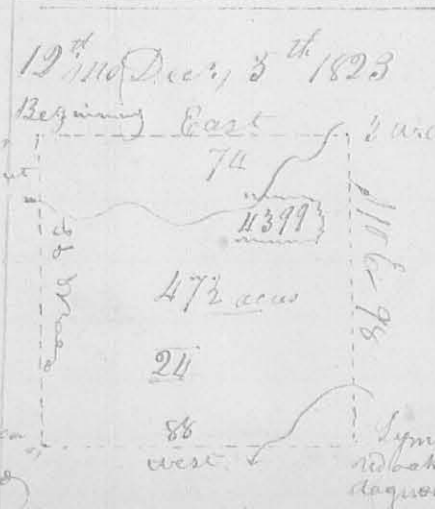
Joseph Garwood }  
 John Bishop }  
 Daniel Garwood marker }  
 James Williamson  
 Surveyor of Logan County

7<sup>th</sup> and 8<sup>th</sup> Dec, 29<sup>th</sup> 1823. Survey No 23

Surveyed 82 acres of land for Jose H. Garwood; beginning at 2 Log a trees easterly corner to Robert Powers survey c 1760 and south east corner to William Wither's Survey c 1725, thence  $\text{ex } 35^\circ \text{ N}$  with the east line of Powers said survey, 166 poles, stake a stone in said line, thence  $\text{ex } 35^\circ \text{ E}$  crossing Mill branch at top pole, to a stake in the county road from Jamesfield to Darby's Creek, thence with said road  $143\frac{1}{2}$  poles to a large white oak, thence with the road  $63^\circ \text{ E}$  crossing a branch, 87 poles to a Log a tree and ironwood, thence  $52^\circ \text{ N } 77$  poles to the beginning containing eighty two acres being the south east corner of William Wither's Survey on the waters of Darby's Creek c 1725 42' easterly variation from the original lines -



Jonathan Garwood }  
 John Bishop }  
 James Williamson  
 Surveyor of Logan County



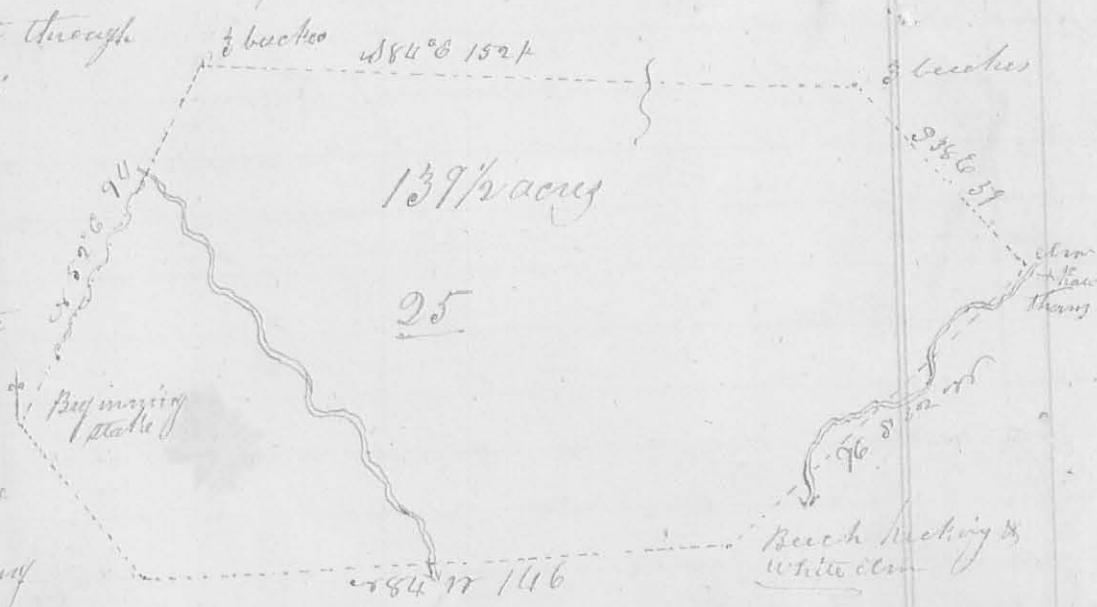
Survey No 24 (817)  
 Surveyed 47 1/2 acres of land for Lanson Curtis (who produced to me a certificate from Noah J. McColloch Auditor of Logan County certifying that there was that day forty seven and a half acres of land sold to the said Lanson Curtis for the taxes interest and penalty, being

15 entered for taxation in the name of Thomas Worthington lycr of entry 4399 (allians Rd 1, where upon I began at 2 lym and white walnut (the walnut is cut down) the south-west corner to Worthington's said survey, and in the south line of Samuel Wallace's survey ex: 2873, thence east with said line 74 poles (cropping a branch at 60 poles) to 3 white oaks, easterly corner to Worthington's said survey thence N10E with the original line 98 poles (cropping a branch at 80 poles) to a lym red oak oak and dogwood, thence west 88 poles (cropping a branch at 35 poles) to a beech ironwood and dogwood in the west line of said survey, thence north with said line (cropping a branch at 98 poles to the beginning, containing 47 1/2 acrs in the north west corner of said survey)

Robert Campbell  
 Jesse Grubb

James Williamson  
 Surveyor of Logansport

Jan<sup>y</sup> 19<sup>th</sup> 1824 (8175) Survey No 25  
 I surveyed for Jose H. Garwood 139 1/2 acrs of land, beginning at a stake the northeast corner of William Withers' survey No 19256 and in the lower line of Hollinsworth's survey ex: 3160, where I made 2 beeches and dogwood, thence ex 52° E with said line (down a spring branch & crossing it several times) to its junction with Pearce's run of Darby's creek at 67 poles, 94 poles to 3 beeches, thence S84° E (cropping a branch at 108 poles) 150 poles, to 3 beeches in an original line by Sullivan's through James Stokes' farm, thence S38° E with said line 57 poles to a white elm and two hawthorn bushes, thence S52° W (cropping a branch 3 times in 68 poles, 96 poles to a beech hickory, and white elm in the line of Withers' said survey, thence ex 84° W with said line, cropping Pearce's





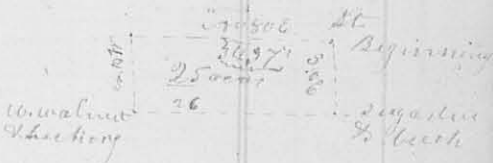
Run at 74 poles, 166 poles to a stake, corner to Withers said survey  
thence  $\approx 38$  W with the north line of said survey 60 poles to the  
beginning, containing 139 1/2 acres

James Dickerson }  
Burya Vickers } b.l.

James W. Morrison  
Surveyor of Logan County O.

1<sup>st</sup> mo. Jan 24<sup>th</sup> 1824 Survey No. 26 (8169)

Surveyed 25 acres of land for Isaac Zane; beginning at a stake on  
the Columbus road, comes to 25 acres deeded to the said Zane by Simon  
Kenton jnr. thence with road N 1/2 E 37 1/2 poles to a sugar tree and creek  
on the west side of said road; thence S 81 W 10 1/2 poles to a small white  
walnut and hickory in the west line of Milliamt Cohrens survey 2267  
thence with said line  $\approx 10$  W 37 1/2 poles to a small  
elm & sugar tree; thence  $\approx 50$  E 10 1/2 poles to the  
beginning containing 25 acres part of Cohrens  
said survey, on the waters of Mad River



Joseph Collins }  
Saml. Hatfield } b.l.

James W. Morrison  
Surveyor of Logan County

2<sup>nd</sup> mo. Feb 15<sup>th</sup> 1824 Survey No. 27 (8176)

Surveyed and divided the north half of section 31 in Town 3  
Range 14 (Sec 11, 12, 13, 14) for Benjn. Scholes & Thomas Macarson  
beginning at the N.W. corner of said section a bottom oak 18 inches  
in diam. 624 1/2 links dist, original corner; thence east between  
Sec 31 & 32, 320 poles to the original corner  
of Sec 31, 32, 25, & 26, a post in a prairie  
a white 30 inches in diam. bears S 1/2 E 77 links  
dist thence South between Sec 31 & 25, 163



poles to a stake in a prairie; thence west 320 poles to a white oak 26  
inches in diam. 624 1/2 10 links dist, in the west line of the section  
thence with said line 163 poles to the beginning  
thence a stake in the prairie at the center of the last & east of  
west line run  $\approx 163$  poles to a stone in the north line of said  
Sec dividing the north half of said section into two parts of 163 acres  
each.

John Scholes }  
William Blair } b.l.

James W. Morrison  
Surveyor of Logan County

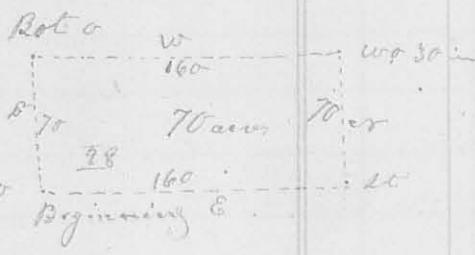


2<sup>nd</sup> Mo. (Feb.) 8<sup>th</sup> 1824

Survey No. 28

8176

Surveyed for Benjn. Schooler, beginning at the South west corner of the S.W. qr. of sec. 31 Town 3 Range 14 (E. 12<sup>th</sup>) a white oak 26 inches in diam. S 45° E 10 links dist. thence east 160 poles to a stake in the prairie at the centre of said sec. thence N 70° poles to a white oak 30 inches in diam. S 70° E 10 links dist. thence west 160 poles to a bot. oak 12 inches in diam. N 49° E 16 links dist; thence



with the west line of said sec. 70 poles to the beginning containing 70 acres, the South side of the S.W. qr of said Section

Williams Basis }  
 John Schooler } 66

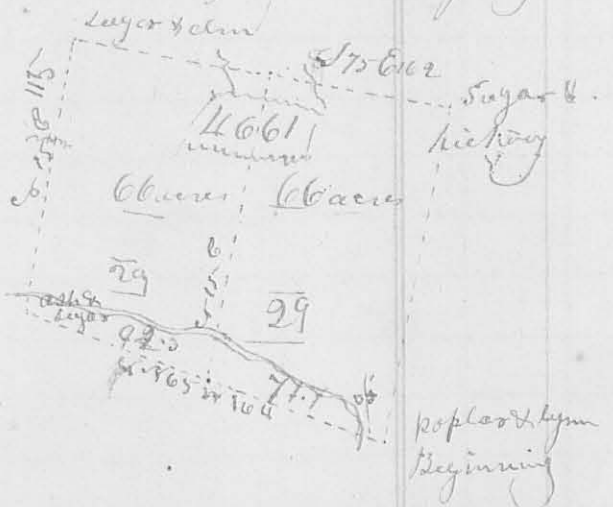
J. Williamson  
 Surveyor of L. C.

8178

4<sup>th</sup> Mo. 10<sup>th</sup> 1824

Survey No. 29

Surveyed and divided 132 acres for Edmund & David Chapman beginning at a poplar and Lym the South east corner to Thomas Shwatts Survey No. 661 on the waters of Millad River thence N 65° E W (one fourth of a degree westerly variation from the original line (crossing a small branch at 44 poles, one at 146 poles) 164 poles to an ash and Sugar tree (here I marked a Hickory; thence N 13° E (crossing a branch at 12 poles, one at 64 poles) 115 poles to a Sugar tree & elm thence S 75° E (having westerly variation from the original line crossing a branch at 70 poles, one at 88 poles) 162 poles to a Sugar tree and Hickory; thence N 15° W 140 poles to the beginning containing 132 acres in the S.E. corner of said Shwatts said Survey - The partition line begins at a Lym back of Sugar tree in the South line of this Survey



71.7 poles from the South east corner; thence N 15° E (crossing a branch at 20 poles) 136 poles to 2 beeches & small sugar trees in the north line, dividing the survey into 2 equal parts of 66 acres  
 William & Christopher Smith  
 J. Williamson S. C.

8179

11th mo. April, 20<sup>th</sup> 1824 Survey N<sup>o</sup> 30

Surveyed and divided 398 acres of land for John & John Sharp and William Asher, in the manner described below beginning at a buck, Lynn, an fresh marked hickory (the sugar tree is dead), the southeasterly corner to David Duncan's survey ex<sup>o</sup> 479 ex<sup>o</sup> S.W. corner to Richard Stephenson's survey ex<sup>o</sup> — on the waters of Darby's Creek thence ex<sup>o</sup> 45<sup>o</sup> 42' N, with the east line Duncan's said survey crossing a branch at 90 poles, one at 272 poles, 440 poles to 2 sugar trees and small buck W. C. corner to said survey and easterly corner to Robert Plover's survey ex<sup>o</sup> 3680 thence S 5 3/4 W 1/2 westerly variation from the original line thence the present bearings is S 5 1/2 W crossing a branch at 88 poles, 155.5 poles to a buck small elm and iron wood in the north line of the original survey



Then first division line begins at 3 cherry trees and buck in the east line of this survey 136.6 poles from the beginning; thence S 5 3/4 W. 155.5 poles to 2 buckeyes and buck on the bank of a branch - The second begins in at 2 white oaks and buckeye in the east line of this survey 136.6 from the beginning of the first division line; thence S 5 3/4 W 155.5 poles to a buckeye buck sugar tree in the west line of this survey dividing it into 3 lots of 132 1/3 acres each  
 John Sharp  
 Olisha Sawgill } 66  
 La. McCarmon Surveyor





20 links dist. both of these are dead; thence north  $1/2$  degree westerly variation from the original line, crossing a branch at 96 poles & one at 196 poles 306 poles to the beginning containing 629 acres

The first division line begins at a stone in the north line of the sec. (the trees are cut down which are called for in the original field notes) 166 poles from either corner; thence S  $17^{\circ}$  W (crossing a branch at 156 poles, one at 118 poles 158 poles set a stake for the center corner, a hickory 12 inches in diam. bore  $\approx$  40 & 12 links dist. crossing a branch at 261 poles, 316 poles to a hickory 6 inches in diam  $\approx$  38  $17^{\circ}$  12 links dist. an elm 12 inches in diam S  $10^{\circ}$  W 15 links dist. both of these are cut down, the original quadrangle corner, it being 162 poles from the S E corner of the sec.

The second line begins at a stake in a prairie in the west line of the sec. 158 poles from either corner; thence east  $1/2$  degree westerly variation 157 poles to the center corner; continued 80 poles further (crossing a gravel cause way at 66 poles) to a stake in a prairie; thence south crossing a swamp set a stake at 59 poles crossing a branch at 106 poles 158 poles to a stake in the south line of the sec. ~~then continued the line.~~ See the Plat

John Gurney  
John Shnell

J. W. Marrison  
Surveyor of Logan County

7<sup>th</sup> mo. (July) 7<sup>th</sup> 1824.

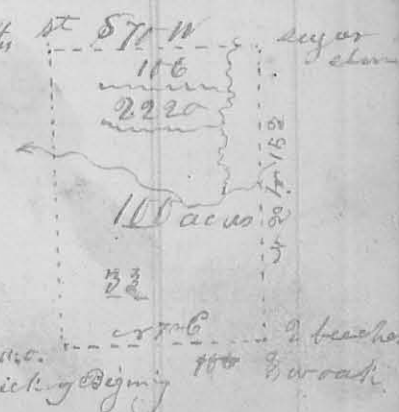
Survey No 33

(8180)

Surveyed 100 acres of land for Joseph Stokes, who presented a certificate from Ezekiel Colloch, Auditor of Logan County, certifying that there was 100 acres of land sold to the said Joseph Stokes on the 5<sup>th</sup> day of Jan. 1824 for taxes interest & penalty, being an entire tract by  $\approx$  of entry 2220 in the name of Henry Delay

beginning at 2 white oaks and hickory one of the oaks is cut down, the south west corner of said survey, thence  $\approx$   $70^{\circ}$  E 106 poles to 2 bushes & white oak

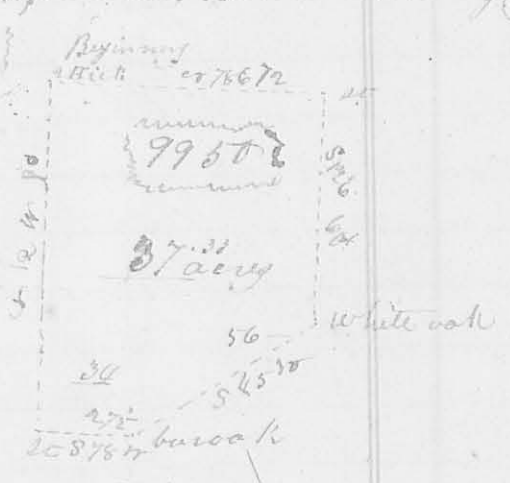
The oak is down, in the line of Augustine J. Smith's Survey  $\approx$  3225 and original corner to said survey here we marked a red oak; thence  $\approx$  20 N. with Smith said line, crossing Mackajack at 82 poles 152 poles to a sugar tree and elm in the line of Holland Hoany; survey  $\approx$  3220 original to Delay's survey thence S  $70^{\circ}$  W. crossing a branch at 15 poles 106 poles to a stake in a prairie, thence





21  
 Thence S 20 E, crossing Mackey's oak at 110 poles, 152 poles to the beginning  
 containing one hundred acres  
 William Stokes } C.C.  
 Charles Mott } C.C.  
 J. M. Harmon  
 Surveyor of Logan Co

7<sup>th</sup> Mo (July) 8<sup>th</sup> 1824  
 Surveyed 37 acres of land for James Bouyer. Beginning at a white oak  
 of them is taken off the e. w. corner to Michael Bouyer's survey to 99.50  
 on the Miami near Solomon's land e. r 78 E 72 poles with the north  
 line of said survey to the corner of stump's land; Thence S 12 E (crossing  
 a prairie) 60 poles to a white oak on a ridge  
 Thence S 45 W 56 poles to a stake & bur oak  
 on said ridge Thence S 78 W 27 1/2 poles  
 to a stake in a prairie in the west  
 line of Bouyer's said survey thence  
 with said line e r 12 N 90 poles  
 to the beginning containing  
 thirty seven acres & thirty three poles  
 William Bouyer } C.C.  
 John Stump } C.C.  
 J. M. Harmon  
 Surveyor L.C.



(8181)

7<sup>th</sup> Mo 15<sup>th</sup> 1824  
 Surveyed the e. w. qr of sec 8 in Town 2 Range 11 Co. M. K. for Jacob  
 Keith; beginning at a stone in a field at the original corner  
 of sec 4, 8, 9, 14 & 15 Thence east 160 poles to a stake in a prairie  
 thence down said prairie south 162  
 poles to a white oak 17 inches in dia.  
 S 72 E. 37 links dist. an elm 12 inch  
 in diam e r 72 1/2 or 37 links dist.  
 thence west 124 poles to a small  
 buckeye on the east bank of the  
 Great Miami River & a hackberry  
 stands near on each side of the  
 buckeye thence up the River with  
 its meanders to a bot. oak corner tree standing on the bank of  
 the River thence north 72 poles to the beginning containing 15 acres  
 William Douglas } C.C.  
 James Moore } C.C.  
 J. M. Harmon  
 Surveyor L.C.



(8182)

10<sup>th</sup> mo Oct, 12<sup>th</sup> 1824

✓ Survey 36

(8181)

Surveyed 56 acres of land for Samuel Garrison, beginning at a small blue ash, and then bush in the south line of Rich-ard Rutledges land in a Michael Bowyer's survey on the old - ami river cr 9950, thence S 78° W with Rutledges line passing some cherry tree ~~and~~ pines at 119 poles the south west corner to Rutledges land; 80 to a stone on the west side of a drain thence S 12° E 112 poles to a stake; thence cr 78° E 80 poles to 2 hickories and ash in the west line of Scott's land; thence with said line cr 12° W 112 poles to the beginning containing fifty six acres part of Michael Bowyer's survey cr 9950



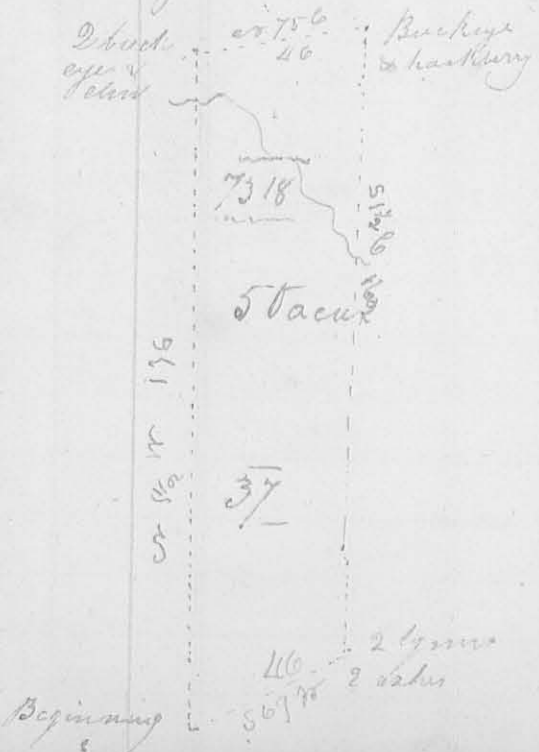
Samuel Garrison  
Surveyor L.C.

12<sup>th</sup> mo 11<sup>th</sup> 1824

✓ Survey 37

(8182)

Surveyed 56 acres of land for Samuel Garrison, beginning at a white walnut and 2 sugar trees S.W. corner to James McVitt's survey cr 4195 & 4604 and S.W. corner to James Galloway's survey cr 7315 thence with the East line of McVitt's said survey cr 1/4 Wierping a branch at 160 poles, 176 poles to 2 buckeyes and elm in the south line of Samuel Davis' survey cr 3216, (the elm is down, I marked a buckeye thence with Davis' line cr 75° E 1/4 westerly variation) 45 poles



to a stake between a buckeye and hackberry in said line; thence S 12° E cropping a branch at 32 poles 160 poles to 2 hickories & 2 ashes in the north line of Thomas Parker's survey cr 4497 thence with said line S 69° W 46 poles to the beginning containing fifty acres the westerly end Galloway's said survey on the waters of Head River.

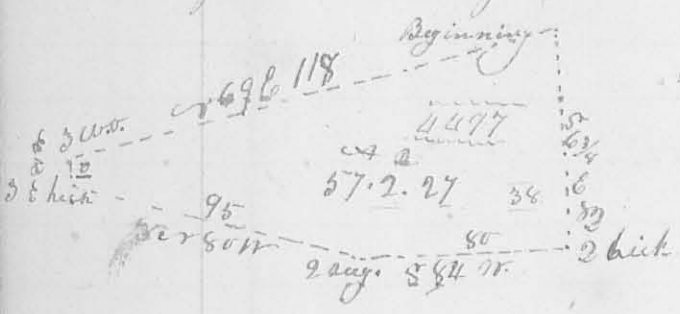
Robert McVitt  
Samuel Garrison  
Surveyor L.C.

12<sup>th</sup> mo. Dec 11<sup>th</sup> 1824.

Survey No 38.

8184

Surveyed for John Colyar, beginning at a poplar, beech and ironwood in the south line of Samuel Harrison's land and N. W. corner of John Bishop's machine lot; thence S 63/4 E 82 poles to 2 hickories and back N. W. corner to said lot; thence S 84 1/2 W 80 poles to 2 sugar trees and dogwood; thence N 80 95 poles to 3 small hickories



thence N 21 1/2 W 10 poles to 2 white oaks, hickory N. E. corner to Benj<sup>n</sup> Wetlin's land and in the north line Thomas Parker's survey or 4497 thence with said line N 69 E 178 poles (crossing a

branch to the beginning containing 57 acy 2 rods 4 27 poles part of Parker's said survey on the waters of Chad River

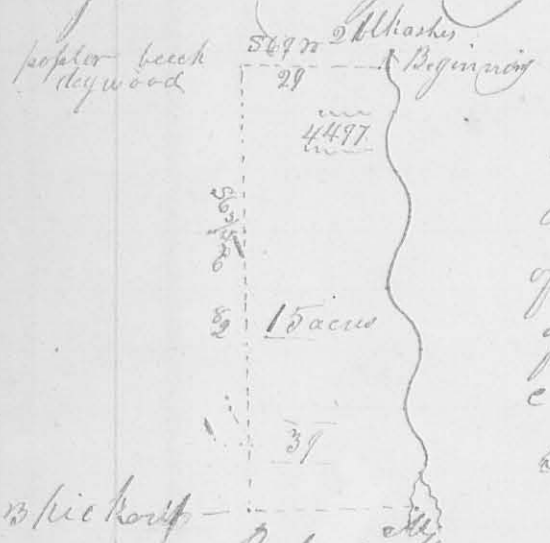
Robert C. Harrison } C. C.  
 Vincent Reams }  
 James M. Harrison  
 Surveyor S. C.

12<sup>th</sup> mo. Dec 11<sup>th</sup> 1824.

Survey No 39.

8187

Surveyed for John Colyar, beginning at 2 black oaks and mulberry on the west side of the machine branch where it crosses the south line of Samuel Harrison's land; thence with the said line S 69 W 29 poles to a poplar beech and dogwood; (the beginning corner of the preceding survey)



thence S 63/4 E 82 poles to 3 hickory and beech N. E. corner to said survey or 381 thence N 70 1/2 E 31 poles to a white walnut and beech on a bank at the junction of 2 branches; thence with the meanders of the machine branch to the beginning containing 65 acy part of Thomas Parker's survey or 4497

Robert C. Harrison } C. C.  
 Vincent Reams }  
 James M. Harrison  
 Surveyor



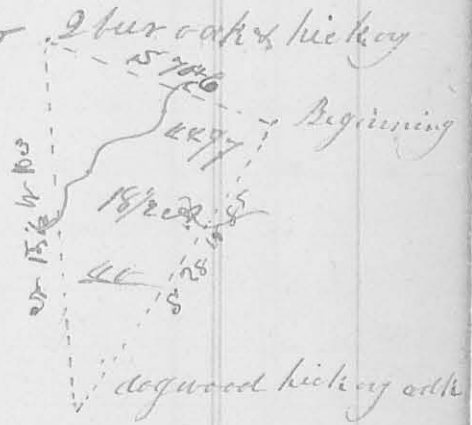
24

7<sup>th</sup> mo (Jan.) 1<sup>st</sup> 1825 V Survey n<sup>o</sup> 40

24  
8187

Surveyed 18 1/2 acres of land for Hampton Burgess; begin-  
ning at a stone, south west corner to Thomas Stewart's 50 acres  
of land, and in the thence S 25 W crossing a branch at 24 poles,  
55 poles to a degraded hickory and red oak corner to Robert  
Smith's land; thence with the N. by line of Smith's land  
E 15 1/2 W crossing a black jack at 60 poles,

11 3/4 poles to a bur oak and hickory, corner  
to said Smith's land, these trees are  
dead, I marked 2 bur oaks & hickory  
thence S 70 1/2 E crossing a black jack  
at 48 poles, 71 poles to the beginning  
containing 18 1/2 acres part of Thomas  
Wattington's survey n<sup>o</sup> 4477 on the  
waters of Mad River



George Elliotts jr. }  
Daniel Purce } 66.

Ja. W. Harmon Surveyor J.C.

1<sup>st</sup> mo 3<sup>rd</sup> (Jan.) 1825 V Survey n<sup>o</sup> 41

8185

Surveyed 100 acres of land for Joseph  
H. Garwood, beginning at 2 say as trees south west corner  
to a survey n<sup>o</sup> 3163 patented in the name of Lucas  
Sullivan and ex. C. comes to Robert Powers' survey  
n<sup>o</sup> 3680 thence S 46 E (being 8<sup>th</sup> easterly variation from  
the original course called for) 126 1/2 poles to 3 young white  
oak, and buckeye on the bank  
of a branch, thence E 5 1/2 E (crossing  
a county road at 40 poles) 126 1/2  
poles to a black walnut bur oak  
and buckeye; thence E 46 W 126 1/2  
poles to a sugar tree, lym & elm  
in the line of William Withers' survey  
n<sup>o</sup> 1258 thence with said line S 52 W



passing the easterly corner of Daniel Stokes'  
land at 52 poles crossing the road at 60 poles, 126 1/2 to the begin-  
ning containing 100 acres part of survey n<sup>o</sup> 3163

Joseph Stokes }  
William Asher } 66

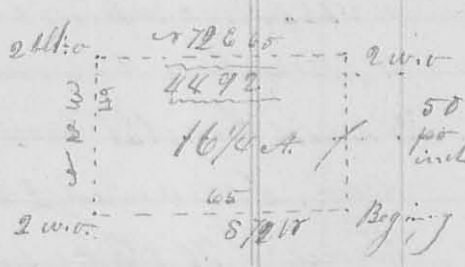
Ja. W. Harmon Surveyor J.C.

1 mo. 7<sup>th</sup> 1825

Survey No 22

9590 25

Surveyed 16 1/4 acres of land for James Boucy, beginning at 2 white oaks and black oak south east corner to Jesse Davis's survey cr 0 4492 thence S. 70° W with the south line of said survey (2° easterly variation therefrom) 65 poles to 2 small white oaks and a large rock in said line, thence cr 18° W 40 poles to 2 small black oaks, thence cr 70° E 65 poles to 2 white oaks in the east line of said survey; thence with said line S 18° E 40 poles to the beginning containing 16 1/4 acres in the south east corner of Davis's said survey



John L. Powers  
Owen McKeal. )

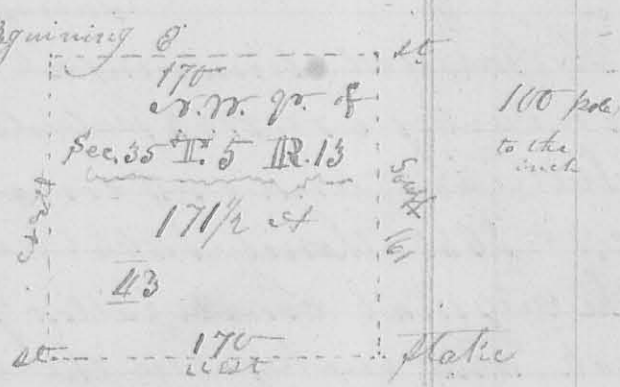
Ja. H. McKeam Surveyor L. G.

2<sup>nd</sup> mo. Feb. 24<sup>th</sup> 1825

Survey No 23

8186

Surveyed 17 1/2 acres for Nicholas Dickrell, beginning at a stake the cr. W. corner of section 35 in Town 5 Range 13 (Cell R). Thence east with the north line of said sec 170 poles to a stake on the west side of a county road, thence south 161 poles to a stake in a barren the center of said sec. thence west 176 poles to a stake in a barren in the west line of this sec. thence with said line north 161 poles to the beginning containing 17 1/2 acres the cr. W. cor of section 35 in said Town & Range

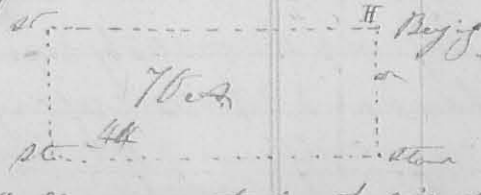


2<sup>nd</sup> mo. (Feb.) 21<sup>th</sup> 1825

Survey No 44

8187

Surveyed 70 acres of land for Nicholas Dickrell; beginning at a hickory in the line between sections 29 & 35 in Town 5 Range 13 (Cell R) 94 3/4 poles from the cr. W. corner of sec 35; thence south with said line 65 3/4 poles to a stone in a barren thence west 170 poles to a stake in the center of said sec.; thence north 65 3/4 poles to a stake thence east 170 poles to the beginning containing 70 acres the south side of the cr. W. cor of said sec



Samuel J. Smith & Vincent Gray

Ja. McKeam Surveyor L. G.