

4<sup>th</sup> Mo. (April) 11<sup>th</sup> 1825 Survey & 25<sup>th</sup>

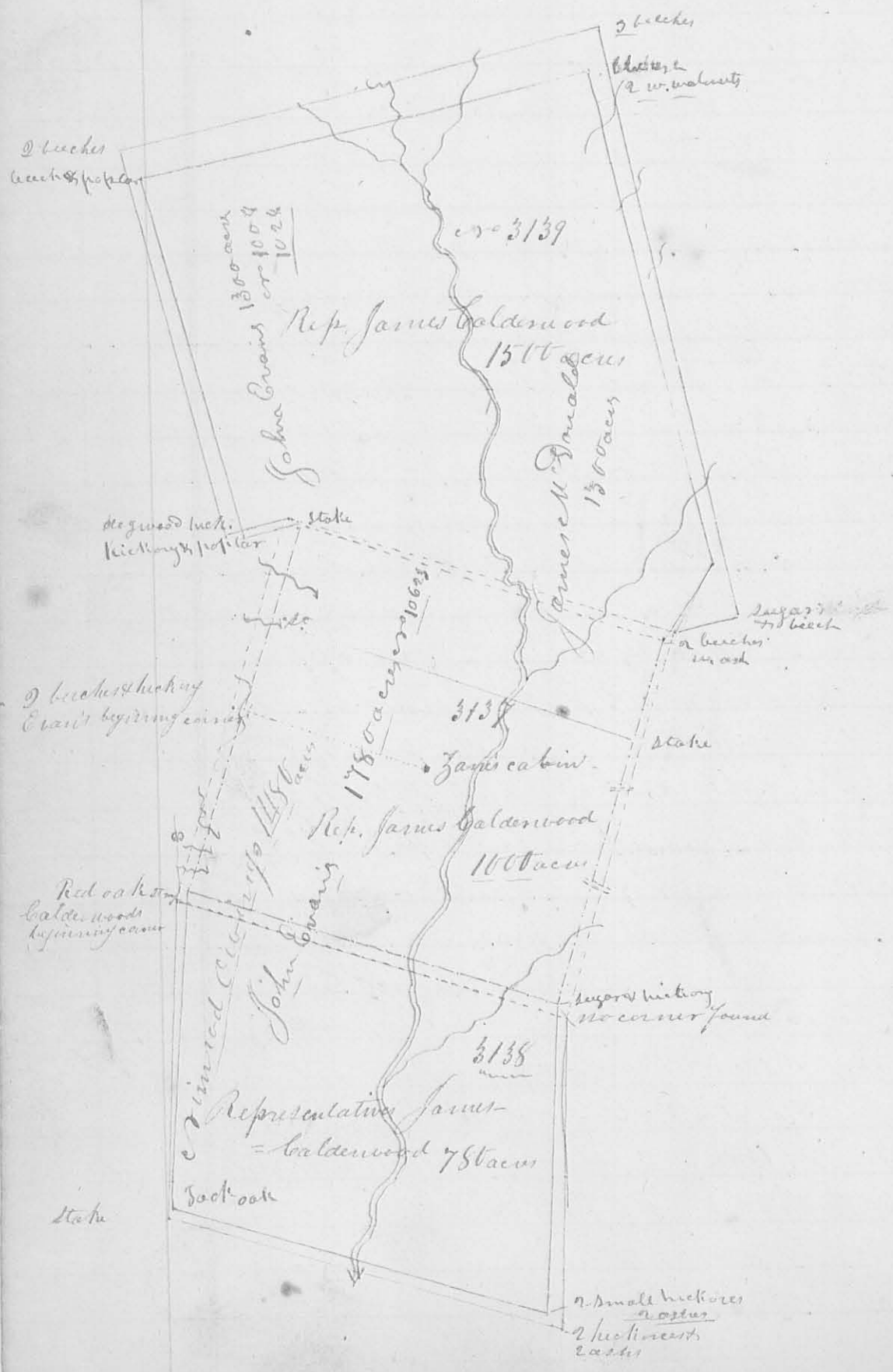
9188 26

containing original survey

The Lessee of Vinwood & Wing  
Plaintiffvs. { Lawson Curtis et. al.  
DefendantsAnd The Lessee of James M. Donald  
Plaintiffvs. { Jesse Garwood et. al.  
Defendants.

In obedience to an order of survey to me directed from the United States 7<sup>th</sup> Circuit Court, Ohio District in the above case I proceeded on the 11<sup>th</sup> day of April A.D. 1825 to execute a survey agreeably to the directions of the parties interested, beginning at a block, admitted by the parties to be the place where the cabin stood in which Isaac Kane formerly lived on Mad River, thence  $\text{N } 75^{\circ} \text{ W } 206$  poles (passing 2 beeches & hickory at 200, marked as a corner corresponding with Crain's beginning corner) to 2 beeches bearing some ancient land marks, said to be in Calderwood's line; thence  $\text{S } 15^{\circ} \text{ W } 203$  poles (crossing a plain at 30 poles, a road at 40, a branch at 58, a drain at 88, one at 124, one at 180, passing 3 beeches at 197, 4 poles to the E. corner made by A. L. Hunt in 1817 corresponding with Crain's patent) to a red oak stump, claimed by the defendants to be the stump of one of the trees of his beginning corner, the tree having been removed some years ago, by the appearance of the stump, no other marks of proper corner trees here - There is an old well marked line from the point of beginning in this line to here, the dates of which appear to be various, some count 12, 16, & 21 years. From here to <sup>the</sup> point first mentioned in this line, and thence  $\text{N } 15^{\circ} \text{ E } 200$  poles (crossing a drain at 17 poles, one at 88, a branch at 160 poles, to a place where the timber appears to have been much destroyed by hurricane and fire; some small sugar trees were found here much decayed; no corner found or line marks except on an ash at the corner marked on the upper bank; Crain's line made by Hunt was on the right from 6 to 10 poles distant. - thence  $\text{N } 75^{\circ} \text{ E } 408$  poles (passing a stone and stone at 10 poles claimed for Crain's corner) crossing Mad River at 308 poles, again at 311, and again at 316 poles; Sugar camp branch at 346, a small drain at 360 - passing 2 beeches and white ash at 404 poles - 4 poles to the right, no corner found, some decayed sugar timber was found here

It no line was found coming to this place claimed by the Dept. thence S 15° W 103 poles crossing a drain at 18, a branch at 45, a deep hollow at 90, a spring branch at 128, a deep drain at 180, a deep drain at 220, a branch at 354, passing a sugar tree and hickory at 397, poles to the right hand corner made by Hunt corresponding with Evans corner here. No corner found claimed by the Dept.



Thence  $r 75^{\circ} W$  268 poles (cropping a branch at 82 poles, Macajac River at 175, a spring branch at 244, a mill race at 228, a road at 255 poles) to the beginning. (no line marks on this nor the last mentioned line) containing 1027 acres

Robert Marrison }  
Benjamin Butler } *et al*

Note the lines shaded with red represent the recent survey and claims, the dotted lines represents the survey made by order of the court a direction of the parties. The depts. admitted that they are within the bounds of the p[er]ffs claims therefore they are not represented on the plat. I surveyed but one of the surveys on the diagram the others are laid down by the field notes of the original and recent surveys.

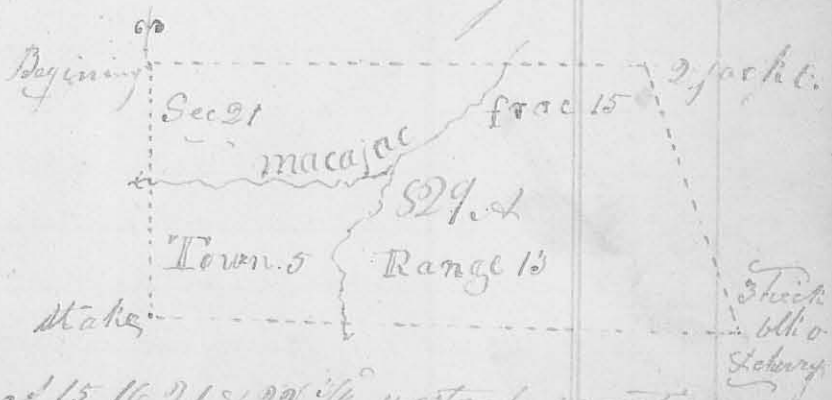
J. M. Marrison Surveyor  
of Logan County

(8189)

10 Mo. Oct. 3<sup>rd</sup> & 4<sup>th</sup> 1825

Surveyed 829 acres of land for Benjamin M. Piatt and others, heirs of John H. Piatt dec. Beginning at a stake corner to sections 21, 22, 27 & 28 in Township 10.5 Range 13 E. M. R. thence between sect. 21 & 27 south (cropping Macajac at 163 poles) 261 poles to a stake in said line thence east  $\frac{1}{2}^{\circ}$  westerly variation allowed cropping the south channel of Macajac at 144 poles 556 poles to 3 small hickories black oak and cherry bush in Sudlers line - thence

with said line  $r 20^{\circ} W$  ( $\frac{1}{2}^{\circ}$  westerly variation from the original line) 276 poles to a small and large jack oak at the corner of sect



15 & 16 - thence between sect 15, 16, 21, & 22  $\frac{1}{2}^{\circ}$  westerly variation from the original line, cropping Macajac at 92 poles & 62 poles to the beginning containing eight hundred and

29  
 twenty nine acres, part of Sec. 21 and fractional sec,  
 15 Town. 5 Range 13 E. of M.

Saml. Burnside } Cb. J. W. Harmon  
 Thomas Hubbard } Surveyor of Logans Co.  
 Joseph Sewell marker

10<sup>th</sup> Mo. Oct. 1<sup>st</sup> 1825

46A

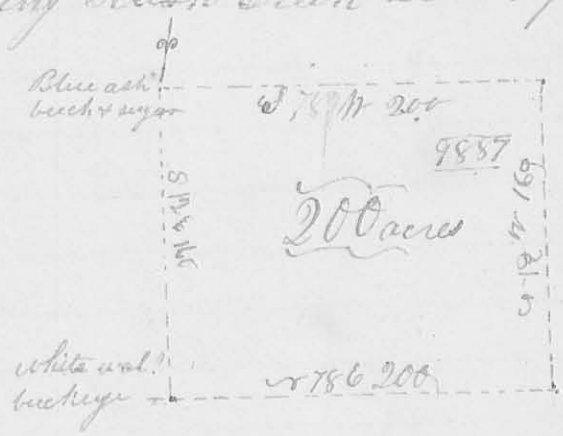
From a division line between Henry Robinson and Alex. Burnside. Beginning in the east line of Sec. 28 Town. 5 Range 13 E. of J. 11 80 poles north of the corner of Sec. 21, 22, 27 & 28 in said Town & Range thence east,  $3\frac{1}{2}^{\circ}$  westerly variation allowed, to the east line of Sec 22 to 2 black oaks in said line

J. W. Harmon S. C.

11<sup>th</sup> Mo. Nov. 11<sup>th</sup> 1825 Survey No. 47 (8190)

Surveyed 200 acres of land for James Taylor Beginning at the N.W. corner of survey No. 9887 north of the Penn-  
 sylvania treaty line, a blue ash buck and sugar tree  
 thence  $S 72^{\circ} E 160$  poles crossing a branch at 106 poles  
 to a white walnut haw-bush and buckeye. Thence  
 $S 75^{\circ} E 200$  poles crossing Rush Creek at 52 poles to  
 two bushes and  
 hickory, thence

$S 12^{\circ} W$  crossing  
 a small branch  
 at 60 poles, 160  
 poles to two bushes  
 and sugar tree in  
 the north line of



said survey - thence with said line and course thence  
 $S 78^{\circ} W 200$  poles crossing Rush Creek to the begin-  
 ning, containing 200 hundred acres in the S.W.  
 corner of the original survey No. 9887

Thomas & Green } Cb. J. W. Harmon  
 Hilthiah Rosebrook } Surveyor Logans Co.  
 Henry Hendrickson marker

12<sup>th</sup> Mo. Dec<sup>r</sup> 7<sup>th</sup> 1825

Survey no 45

Surveyed 205 acres of land, for Jose H. Garwood. Beginning at three beeches in Hollinsworth's lower line and N.E. corner to John Gratton's survey no 4606. thence with the easterly line of said survey S 38° E 160 poles to a haw thorn, bush, elm, and buckeye - thence S 52° W 205 poles (cropping flat branch at 118 poles, again at 110, & Darby's creek at 200 poles) to a beech and two sugar trees, in Gratton's south line. Thence S 38° W 160 poles to a stake in Hollinsworth's said line - thence with said line N 52° E 205 poles (cropping Darby's creek) to the beginning two hemlock - dred and five acry



part of Gratton's survey no 4606 on Darby's creek - at the same time made a division line through the 205 acres beginning at 3 elms in the southerly line 102 1/2 poles from either corner thence N 38° W 205 poles to 2 beeches in the northerly line making 2 equal lots thereof.

Joshua Painter }  
James Hedges } C.L.  
Jose H. Garwood marker }  
Ja. W. Harmon S.L.C.

12<sup>th</sup> Mo<sup>th</sup> Dec<sup>r</sup> 12<sup>th</sup> 1825

Survey no 49

Surveyed 222 1/2 acres of land for the heirs of Thomas Wilkinson as hereafter mentioned Beginning at a red oak and white in the west line of Alex<sup>r</sup> Ch. Dandridge's survey no 4477, and S.E. corner to Hezekiah Morton's survey no 4498 on the waters of Mad River and Miami - thence north, with the line of Morton's survey 55 poles (passing white oaks at 26 poles comes to Dandridge's said survey) cropping a branch at 180 poles and again at 210 poles to a white oak, beech and cherry tree (the cherry tree is fallen) N.E. corner to Morton's

survey - Thence west  
 100 poles to 3 small black  
 ashes in a bog, thence  
 south 356 poles (crossing  
 a branch at 260 poles)  
 to 2 elms and white  
 oak S.W. corner to  
 Morton's survey - thence  
 S 87 1/2 E 25 poles to the  
 beginning containing  
 222 1/2 acres part of  
 Morton's said survey  
 There is 1/2° westerly va-  
 -riation from the ori-  
 -ginal line

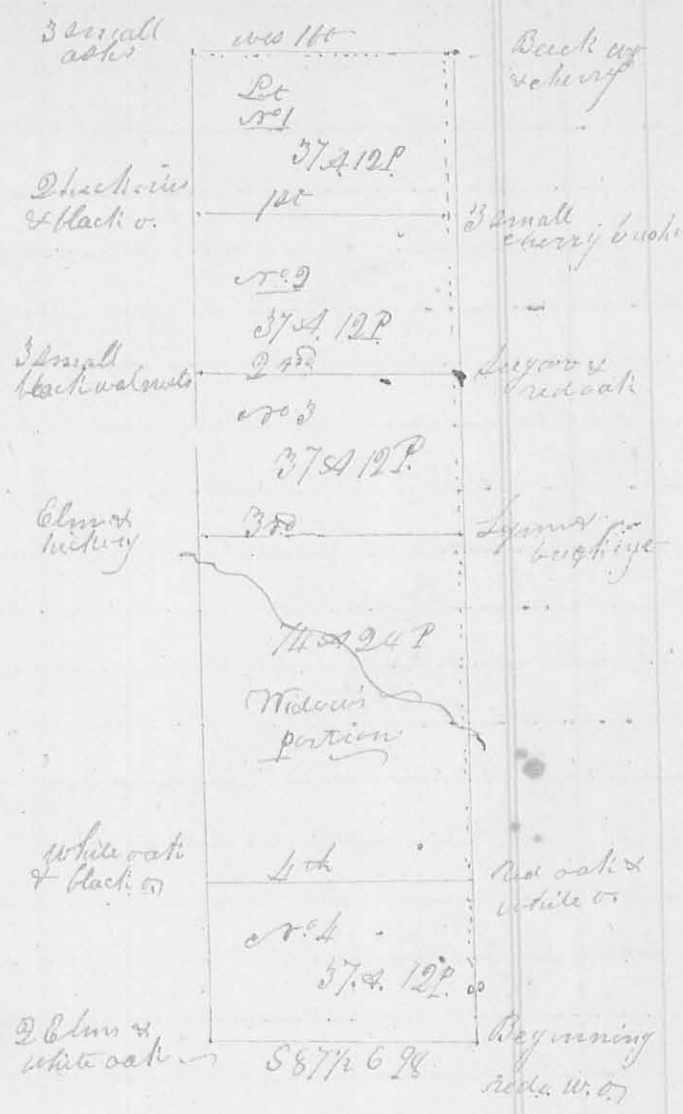
The 1<sup>st</sup> division line be-  
 -gins at 3 small cherry  
 trees, 2 from one spot,  
 in the east line of  
 this survey 593 poles  
 south from the c.r. & c.

corner - thence west 110 poles to 2 hickories and a black oak  
 - nut in the west line -

The 2<sup>nd</sup> begins at 3 small black walnuts in the west  
 line - thence east to a sugar tree and red oak in the  
 east line -

The 3<sup>rd</sup> begins at a lynn, buckeye and stone in the  
 east line - thence west to an elm and hickory in the  
 west line

The 4<sup>th</sup> at a white oak and black oak in the west  
 line - thence east to a stake, large red oak and small  
 white oak in the east line - each lot containing 37  
 acres and 12 poles - except the widows portion in which  
 there 74 or 24 poles



George M. Collock } C. C.  
 Silas Bayly }  
 George Wilkinson marker

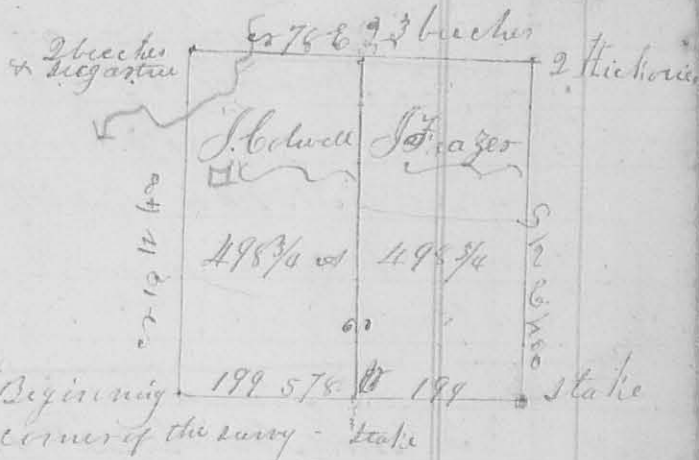
Ja. W. Harrison }  
 Surveyor Logan C. C.

12<sup>th</sup> Mo. Dec 17<sup>th</sup> 1825

Survey No 50

8194

I made a division of survey No 9949 north of the green river  
 treaty line, for James Caldwell and James Frazer, of Virginia.  
 Beginning at a stake in  
 the south line of the sur-  
 vey 199 poles from either  
 corner thence N 75° 11' 40"  
 poles to 2 beeches in the  
 north line of the survey  
 dividing it into 2 equal  
 parcels



James Bowyer }  
 William Bowyer } (Ck.)

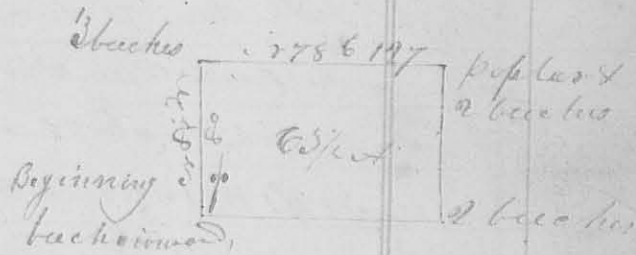
James McMillan Surveyor

1<sup>mo</sup> (Jan) 3<sup>rd</sup> 1826

Survey No 51

8195

Surveyed 6 1/2 acres of land for Andrew Willson - Begin-  
 ning at a buck, ironwood, and sugar tree in the south  
 line of William Cochran's Survey No 3236. Thence N 87° 17' 50" poles  
 to 3 beeches, corner between said Willson and Burnside, thence  
 N 77° E 127 poles to a poplar and  
 2 beeches in the east line of  
 said survey, and on the bank  
 of a branch of Mill Creek  
 thence with said line S 10° E



80 poles to 2 beeches, an original corner of the survey  
 thence with the original line S 79° W 128 poles to the  
 beginning containing sixty three & half acres in the  
 S.E. corner of Cochran's said survey James McMillan S.S.C.

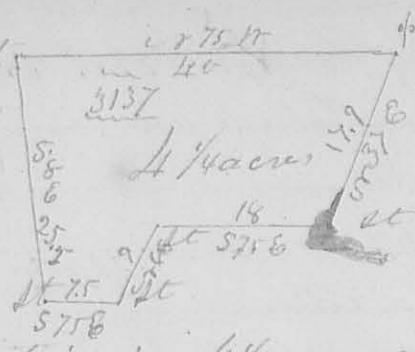
1<sup>mo</sup> (Jan) 14<sup>th</sup> 1826

Survey No 52

8188

Surveyed 4 1/2 acres of land for Obenizar Jane. Beginning at  
 a large sugar tree, S.E. corner to John Bishop's land, thence  
 with the south line of his land N 75° 11' 45" poles  
 to a stake on the east side of the Sandusky road  
 thence S 8° 11' 25.5" poles to a stake on the same side of  
 said road thence S 75° E 75 poles to a stake, thence N 46°

with 6 poles to a stake, thence S 75° E 18 poles to a stake  
 on the west side of the road from  
 John Bishop's to  
 Jamesfield, thence  
 N 37° E 17.9 poles  
 to the beginning containing 4 1/4 acres & 24 poles part of  
 Survey No. 5157 on Mad River



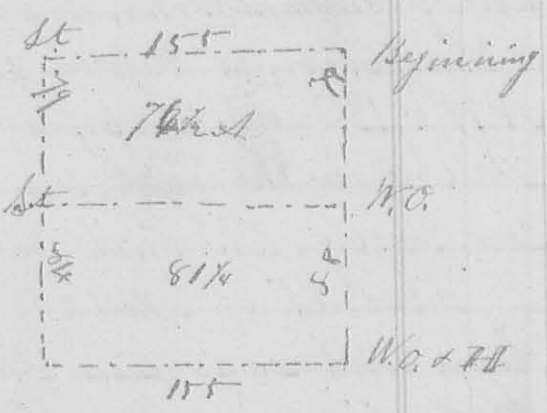
Saml. Gannett }  
 Jonathan Pennel } C.C.

A. W. Mearns  
 S.L.C.

3<sup>rd</sup> mo. March, 22<sup>nd</sup> 1826. Survey No. 53

(8196)

Surveyed for James Brown, the N.E. q. of sec. 10. T. 4 R. 13 E. of the Miami. beginning at the corner of sec. 4, 5, 10 & 11 original bearing trees a "white oak 20 inches in diameter S 44° W 20 links dist. a black oak 24 in. in diam. S 63° E 17 links dist. (the white oak is cut down), thence between sec. 4 & 10, 168 poles to the original q. sec. corner a "white oak 12 in. in diam. S 77° W 12 links a hickory 10 in. in diam. N 37° E 20 links dist. then returned, 54 poles on said line and marked a white oak 26 in. in diam. N 41° W 13 links dist thence west, allowing one degree easterly variation, 155 poles



and set a stake in a field; thence N 79° poles to the north line of said sec., thence with said line, allowing 1° easterly variation, 155 poles to the beginning thus ascertaining the contents of said q. sec. and dividing it into two unequal parts of 76 1/2 ac. & 8 1/2 ac.

Lauris Herman }  
 Charles Brown } C.C.

A. W. Mearns S.L.C.



8188

June 15<sup>th</sup> 1826, Survey N<sup>o</sup> 54  
 7<sup>th</sup> Circuit Court of the United States, District of Ohio  
 The Estate of Nimrod Owings Plaintiff  
 vs.  
 Lanson Curtis et. al. Defendants } In Execution

In pursuance of an order of survey from the Court aforesaid, to me directed and the notices herewith sent (the parties being present,) I proceeded on the 15<sup>th</sup> day of May A<sup>d</sup> 1826 to the lands in controversy between the parties. Beginning by direction of the Pltff's Attorney to survey his claims by virtue of a deed of conveyance from John Evans, the patentee, to Nimrod Owings, dated the 23<sup>rd</sup> of April 1823, being part of a tract of land containing 1780 acres or thereabouts, granted to the said John Evans by James Monroe President of the United States, by patent bearing date the 15<sup>th</sup> day of November 1821 - beginning for the same at 2 bucky and hickory or 75<sup>th</sup> N 200 poles from the south west corner of the house in which Isaac Zane lived in 1812 and until his death, now called Zanesfield, which corner is proved by the depositions of David Chapman herewith returned and Aaron L. Hunt herewith returned, (see pages from one to eight, the same being the beginning corner to Evans' patent, running thence S 15<sup>o</sup> W 198 poles, crossing a branch 3 links wide at 10 poles, a road at 20, a branch 20 links water at 66, one link water at 98, crossed it again at 103 poles, a bend of the large branch 106, to 114, a Spring branch 2 links water 162, a branch 6 links water at 170 poles to 3 bucky, corner to Evans' patent, found them 3 poles to the right hand, from which a red oak stump bears S 47<sup>o</sup> W 10 poles & 18 links, and from this stump marked on 4 sides bears S 75<sup>o</sup> E 5 poles distant, thence South S 20 poles, crossing a branch at 72 poles one at 204 poles, to a small jack oak (now down, marked, an other corner to Evans' patent Evans'.

25  
 Southwesterly corner corner thence S 75° E 396 poles, <sup>25</sup>crip-  
 -ing a road at 36 poles, Mad River from 166 to 174 &  
 a spring branch, near its head, at 240 poles to 2 small  
 hickories and 2 small white oaks, Southeasterly comes to  
 said Evans' patent; Thence north 320 poles, at the ter-  
 -mination of 28 poles 3 elms marked as a corner bear  
 S 76 1/2° E 8 poles distant, at 176 cropped a spring branch,  
 to a sugartree and hickory, marked about 1817 from  
 this corner 2 red elms standing near together bear S 75 1/2° E  
 3 poles, a cherry tree and hackberry bear S 78 1/2° E 5 poles dist  
 and 3 white walnuts growing from one root, and buck-  
 -eye bear S 75° N 5 poles distant all marked as corner  
 -trees and appear about of the same age of Evans'  
 corner tree - Thence S 75° E 276 poles, criping at Harmon's  
 branch, 20 links water at 174 poles a road, 200 at hand  
 with steep banks at 220, and Dickinson's Spring branch  
 at 271 poles to a stake, thence S 75° N 396 poles, criping of  
 Mad River, and a road to a stake in the original line,  
 Thence S 15° N 78 poles criping a branch 3 links water at  
 74 poles 74 poles, to the beginning, estimated to contain  
 1480 acres. - I certify that, <sup>the</sup> line mentioned by me in  
 my former return in these words to wit "to 2 beeches,  
 bearing some ancient land marks, said to be in Cal-  
 -derwoody line" which 2 beeches are in the same the  
 same line mentioned by James Galloway in his  
 deposition deposition  
 herewith returned, in  
 his answer to the 1<sup>st</sup>  
 interrogatory put to him  
 which answer is in  
 these words to wit  
 "In the year 1809,  
 I think, I made a  
 further search to  
 find the Southwesterly  
 corner of survey no  
 2107 by running.  
 S 75° N 200 poles



35 from James house above mentioned, where I found a line, that appeared to have been run and marked 3 or 4 years previously, which I followed N 15° W 200 poles where I found some marks on a beech tree but no trees marked as corner". - I also certify I laid down in my former return at the request of the defendants from a field connection which I then had in my possession, the original of which was made by Walter Owen, the claimer of the representatives of James Calder = woods surveys cr 3138 of 780 acres and cr 3139 of 1500 acres, but that I did not actually run any of said surveys except those of the 1000 acre cr 3137.

Note. - The foregoing diagram truly represents the Plff's claims, and I believe the persons named in this case are within the limits of the Plff.

Robert C. Harmon	} -66.	James McKernan
James Watkins		Surveyor of Logan County.

T Survey No. 35

(B188)

7<sup>th</sup> Circuit Court of the United States, District of Ohio,  
The Estate of James McDonald Plff.

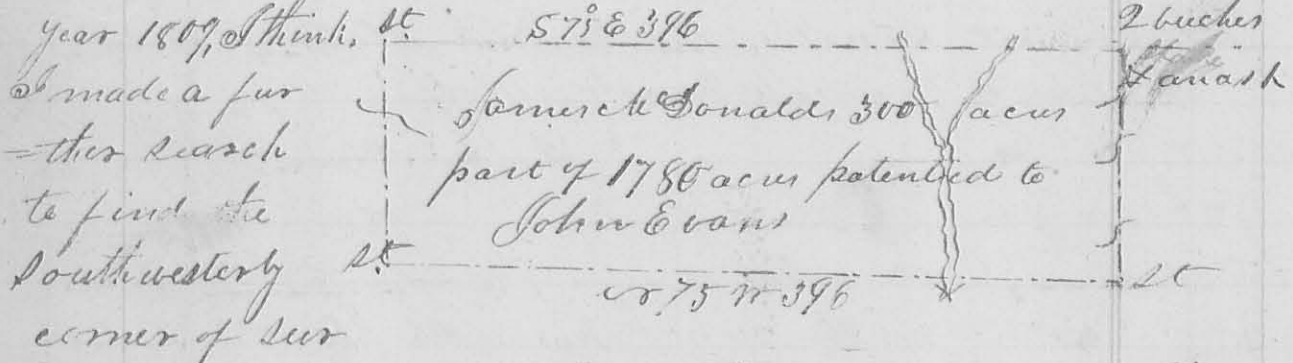
vs. } In Ejectment

Isaac Lane et al. Dfts.

In <sup>presence of</sup> ~~presence of~~ an order of survey to me directed from said Court, and the notice herewith returned, both parties being present, I proceeded on the 15<sup>th</sup> day of May 1826 to survey the land in controversy between the parties; Beginning by direction of Plff's attorney to survey his claim, by virtue of a deed of conveyance from John Evans, the patentee to James McDonald dated the 23<sup>rd</sup> day of April 1824; being part of a tract of land containing 1780 acres, granted unto the said John Evans, by patent, bearing date the 13<sup>th</sup> of November = ber 1821; beginning for the same at 2 beeches and white ash, north east corner to said Evans Survey cr 1042's, thence, reversing a line thereof, N 15° W 120 poles crossing a spring branch, 2 links water at 16 poles a branch

7 links water at 43 poles, and a branch 2 1/2 links water, high steep banks at 86 poles,) to a stake corner to a lot or tract of rimmed Owing's land, conveyed to him by John Evans thence with a line of said Owing's land N 75 W 396 poles (crossing Mad River and a road to a stake, north west corner to said Owing's land and in the line of the original survey, thence N 88 E 120 poles (crossing a spring branch 2 links water at 8 poles a branch 7 links water at 74 poles) to a stake north westerly corner to said Evans patent thence S 75 E 396 poles to the beginning containing 300 acres

I certify that the line mentioned by me in my former return in these words to wit "a to 2 bushes bearing some ancient land marks, said to be in Calderwood's line" which 2 bushes are in the same line mentioned by James Galloway jnr in his deposition herewith returned, in his answer to the 1st interrogatory put to him, which answers in these words to wit, In the



year 1807, I think, I made a further search to find the Southwesterly corner of survey by N 31 1/2 W by running N 75 W 200 poles from James house above mentioned, where I found a line that appeared to have been run and marked three or four years previously, (which I followed S 15 W 200 poles, where I found some marks on a buck tree, but no trees marked as a corner. I also certify that I laid down in my former return, at the request of the defendants, from a field connection, which I then had in my possession, the original of which was made by Walter Durin, the claims of the representatives of James Calderwood N 31 1/2 E of 780 acres and N 31 1/2 W of 1500 acres, but I did not

not actually run any of the lines of said survey of Calderwoods except cr<sup>o</sup> 3137 of 1000 acres.

note. - I believe that the persons named in this cause are within the Pltff's bounds, and the foregoing plat represents his survey.

Robert M. Harmon  
James Matthews

May 15<sup>th</sup> 1826

Jas. M. Harmon  
C. C.

Surveye r<sup>o</sup> 56

7<sup>th</sup> Circuit Court of the United States, District of Ohio.

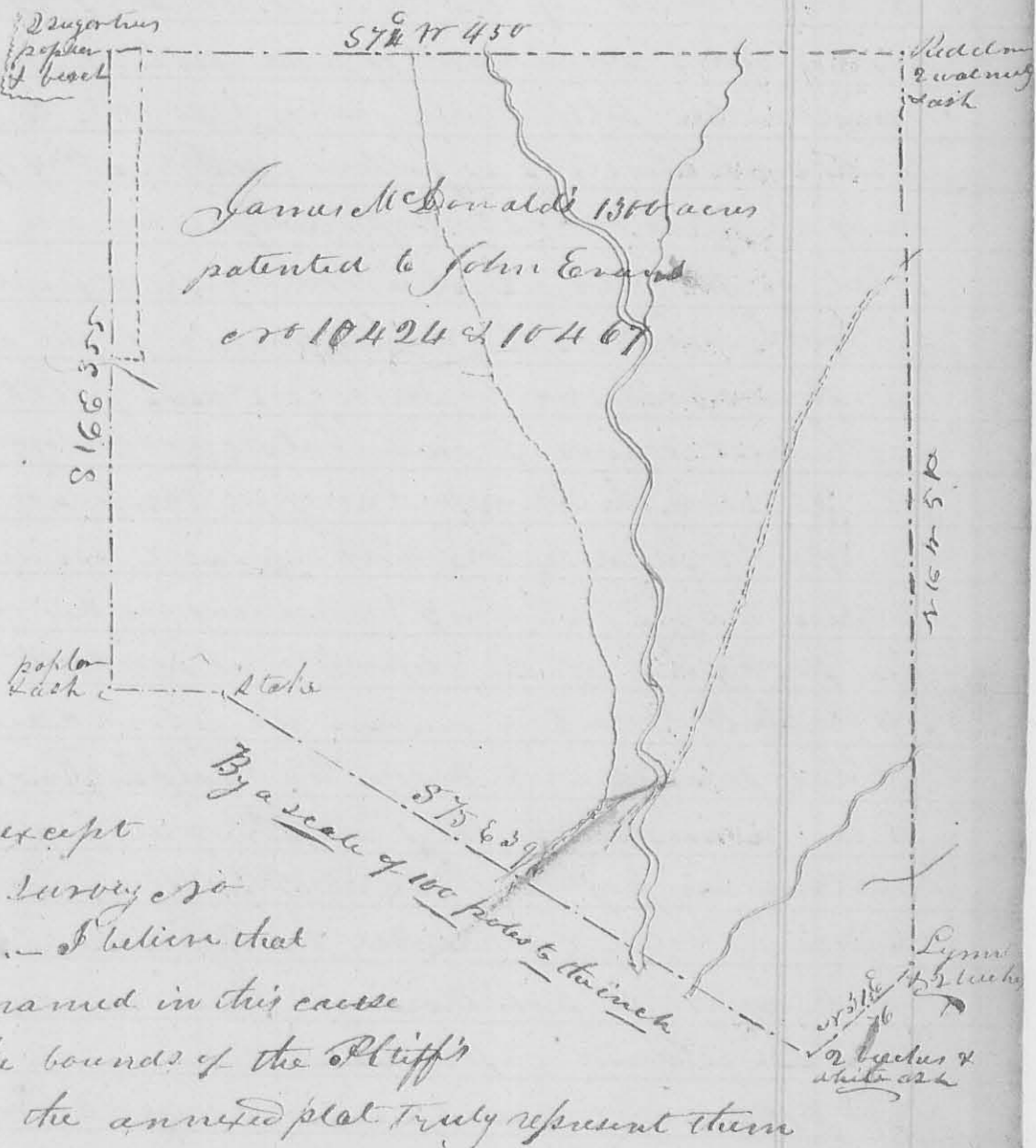
The Lessee of James McDonald Pltff. vs. Jesse Gaswood et. al. Defendants. Ejectment

In pursuance of an order of survey to me directed from said court, and the notices herewith returned, both parties being present, I proceeded on the 15<sup>th</sup> day of May 1826 to survey the land in controversy between the parties, beginning by direction of Pltff's Attorney to survey his claims by virtue of a deed of conveyance from John Evans, the patentee, to James McDonald dated the 25<sup>th</sup> day of April 1824; it being a tract of land patented to the said John Evans, by James Monroe, president of the United States, by patent bearing date the 13<sup>th</sup> day of November 1821 containing 1300 acres cr<sup>o</sup> 10424 & 10467. Beginning at 2 beeches and white ash the north west corner of the said John Evans' survey cr<sup>o</sup> 10423 of 1780 acres. Thence with the lines of said Evans' survey and patent cr<sup>o</sup> 10424. - commencing with the second line thereof cr<sup>o</sup> 31 1/2 E 76 poles, (crossing a small drain at 82 poles) to a cypress and 2 beeches southeasterly corner to said Evans' patent, thence cr<sup>o</sup> 16 N 510 poles, (crossing the dry channel of a branch, a branch 12 links water at

116 poles, a drain at 290, a deep drain at 310, a road  
 384, and a small branch at 446 poles) to a red elm  
 white ash, a small white walnut, and a black  
 walnut, and a small blue ash, northeasterly cor-  
 = ner to Erwin's said patent; thence S 78° W 450 poles  
 (cropping a spring branch at 86, a state run for links  
 water at 99, Mad River at 263, a road at 315 a  
 small branch at 374, Spences' east line at 430  
 poles to 2 sugar trees, poplar and birch all small  
 and on the east side of a deep drain, or path  
 = or spring branch, westerly corner to said pat-  
 = ent, thence S 16° E 355 poles (cropping the south line  
 of Charles Spences' survey no 758, 20 poles west of  
 a lynn, ash, and red oak, S.E. corner, to said survey  
 a spring branch at 199 poles) to a poplar and ash  
 south westerly corner to Erwin's said patent; thence N 74°  
 (E 65 poles (cropping a small branch at 27 poles) to a  
 state, or N. W. corner to Erwin's survey no 104 2<sup>d</sup>. — This in-  
 = ber has been much destroyed here by stormy  
 thence S 75° E 396 poles, (cropping a road, Mad River  
 and a branch) to the beginning, (this line was not run  
 by me) — I certify that the line mentioned by  
 me in my former return in these words, to wit  
 "to 2 bushes bearing some ancient land marks,  
 said to be in Calderwood's line," which 2 bushes are  
 in the same line mentioned by James Galloway  
 jun in his deposition herewith returned, in his  
 answer to the 1<sup>st</sup> interrogatory put to him, which  
 answer is in these words, to wit: "In the year 1859,  
 I think, I made a further search to find the south  
 = westerly corner of Survey no 310<sup>7</sup>, by running  
 N 75° W 200 poles from Tanis house above mentioned  
 where I found a line that appeared to have been  
 run and marked there, or four years previ-  
 = ously, which I followed S 13° W 200 poles, where I  
 found some marks on a buck tree, but no tree  
 marked as a corner." &c — I also certify that

I laid down, at the request of the defendants from a field connection which I then had in my possession, the original of which was made by Walter Dunn.

The survey claimed by the representatives of James Calderwood is 3138 of 780 acres & survey is 3139 of 1500 acres, but that I did not actually run any of the lines of these surveys except the 1000 acre survey is 3137 - Note - I believe that the persons named in this cause are within the bounds of the Plaintiff's claims, and the annexed plot truly represent them



Robert Harmon }  
James Watkins }  
do. May 15<sup>th</sup> 1826 }  
G. W. Harmon }  
G. Surveyor }  
G. Surveyor

United States 7<sup>th</sup> Circuit Court, Ohio District,  
 The Lessee of James McDonald Plaintiff  
 vs.  
 Isaac James and others Defendants } Ejectment  
 The same Plaintiff vs.  
 Jesse Garwood and others Defendants } Ejectment  
 The Lessee of Erimrod Owens Plaintiff }  
 vs. Lanson Carter and others Defendants } Ejectment

Pursuant to orders of survey from the said Court to  
 Run out by the P'tiffs in the foregoing cause, and after  
 previous notices having been given by the P'tiffs. Proceed-  
 ed at the request of the defendants (the P'tiffs. having sur-  
 veyed under said orders and notices,) the attorney and  
 agent of the P'tiffs both being present, to survey the  
 lands in controversy as follows to wit: May 17<sup>th</sup> Begin-  
 ning at a red oak stump designated on the following  
 plat by the letter A, claimed by the defendants to be  
 the South west, or beginning corner of the Representative  
 of James Calderwood's survey r<sup>o</sup> 3137 of 1100 acres and  
 north west corner of said Calderwood's survey r<sup>o</sup> 3138  
 of 700 acres, the stump being at the place pointed out  
 to me by John Story and referred to in his answers  
 to the 5<sup>th</sup>, 6<sup>th</sup>, 7<sup>th</sup>, 8<sup>th</sup>, and 9<sup>th</sup> questions in his depositions  
 on pages 9 & 10 of the depositions herewith returned  
 [to the clerk's office] by me in the above causes; also the  
 place pointed out to me by Ralph Knox, and referred  
 to in his answers to the 1<sup>st</sup> and 2<sup>nd</sup> questions in his dep-  
 ositions on page 11 of said depositions; and also the same  
 place pointed out to me by William Asher, and refer-  
 ed to in his deposition in said causes, on pages 12  
 and 13 in said depositions, running thence South  
 320 poles, (crossing a spring branch & links water at  
 57 poles, a spring branch at 194 poles, a branch  
 links water at 212 poles, passing Belms, and bur oak  
 at 260 poles, represented on said the following plat  
 by the letter O, easterly corner to John Galloway's  
 survey r<sup>o</sup> 11449, and north corner to James Denny's  
 survey r<sup>o</sup> 4957,) to an open place, designated on  
 said plat by the letter D, where all the timber is  
 small; but few saplings more than 25 feet high  
 the smaller growth is hazle and thorn bushes  
 very much like places where there have  
 been Indian towns. - Thence S 75<sup>o</sup> E 408 poles  
 (crossing ~~the~~ ~~road~~ ~~at~~ ~~at~~ ~~road~~ at 45 poles, pass



-ing a walnut and elm at 110 poles, with old line  
 marks, block  $\text{N}^{\circ} 5$  came from this walnut, - crossing  
 Mad River at 170 poles, - passing two dog woods mul-  
 -berry, and white oak at 260 poles, designated on  
 said plat by the letter P, east corner to James Denny's  
 said survey and corner to Walter Denny's survey  $\text{N}^{\circ}$   
 9592, 9618, and 10075, a hickory and white oak at  
 348 poles, designated on said plat by the letter Q  
 corner to Denny's said survey, and corner to Thom-  
 -as Parker's survey  $\text{N}^{\circ}$  4497, to an ash, designated on  
 said plat by the letter C, which ash has been down  
 for some years past; <sup>found</sup> on one side 2 marks in a  
 line, and on another one mark on the trunk  
 of the tree, the bark below this was broke off and  
 lying on the ground in small pieces: no other  
 marks were found on the ash (see the bark), an old  
 hickory stump stands  $\text{S} 62^{\circ} 11' 23''$  links. links dis-  
 -tant, and a hickory  $\text{N} 57^{\circ} \text{E}$  1 pole distant which  
 is marked as a line tree, an elm and red oak stands  
 southwesterly about one pole from the root of the  
 ash, which are marked as corner trees, all on the  
 side of a small pond. - Thence north 320 poles,  
 passing 3 elms designated on said plat by the letter  
 R at 42 poles corner to Parker's said survey, an  
 elm and 2 dog woods at 80 poles, 8 or 10 poles to the  
 east, as designated on said plat by the letter S  
 and to south west corner to James McVitt's survey  
 $\text{N}^{\circ}$  4195 and 4604, crossing a spring branch at 198  
 poles, passing a buckeye at 302 poles with very old line  
 marks) to the place designated on said plat by  
 the letter B where a sugar tree and ash formerly stood,  
 as appears by the roots and remains of them such  
 trees, though it is impossible to tell by what now re-  
 maining of them whether they ever were marked -  
 from this place a sugar tree, from which we took  
 block  $\text{N}^{\circ}$  1, and designated on said plat by the  
 small a near B stands  $\text{N} 32^{\circ} 1/2 \text{ W}$  3 poles - on its easterly

side were 3 marks in a line up the tree, a little more to the south were 2 more marks thus, :: on the south are 5 marks in a line, 4 of them are close to each other, after taking the block from the easterly side, we discovered 2 marks on the north side one of them close in the upper side of the chop made in taking out the block. — This tree is claimed by the defendants, as being the south east corner of Calderwood's said survey n<sup>o</sup> 3137, and north east corner to Calderwood's said survey n<sup>o</sup> 3138 —

Thence n 15° E 408 poles, passing 3 beeches, forked white walnut and hickory stump, at 24 poles, S 86° E 11 poles distant, and designated on said plat by the letter J south west corner to Duncan & Arthur's survey n<sup>o</sup> 4443, crossing a branch at 50, a road at 98, at 184 and 186. 2 small spring branches, a road at 206, a branch with steep banks at 222, a small drain at 233 which joins the former 4 poles below, passing two beeches, and fallen maple at 236, about 14 poles to the east as designated on said plat by the letter U and B, north corner to Arthur's said survey — crossing a branch with high steep banks at 310, a branch 7 inks water at 374, a spring branch at 396 poles, to a sugar tree and down elm designated on said plat by the letter G and 12, found the sugar tree 2 poles to the east with 3 marks on one side thus :: one not through the bark, one of the two upper ones is up and down the tree, and appears older than the other on the south side are 3 marks, one old one, one looks like a ball had been cut out with the corner of an ax lately, and one above this was made with a large ax since the lower one on this side; on the north side are 3 marks made with a large ax lately and scarcely through the bark, from this we took the block n<sup>o</sup> 4. The elm being down is much decayed, so that it is impossible to tell whether it ever was marked; around this sugar tree stand

5 beeches which appear to have been marked more recently than some of the marks on the sugar tree. Some of these have 3, some 4 hacks on a side in a line up the tree, and all are marked on three or more sides, on one of them are the figures 1820. This sugar tree and elm are claimed by the defendants as being the northeast corner to said Calderwood's said survey no 3137, and corner to said Calderwood's survey no 3139, and said corner is referred to by said Knox in answer to the 3<sup>d</sup> question of his deposition before referred to. Thence  $\text{S } 72^{\circ} \text{ E } 65 \text{ poles}$ , (crossing a small drain at 20 poles) to a point represented on said plat by the letter K and N. Thence  $\text{S } 16^{\circ} \text{ W } 240 \text{ poles}$ , (crossing a line at 59 poles, a branch to link water at 66, at 160 came to sugar-camp branch, crossing it 3 in 9 poles distance) to a random stake designated on said plat by the letter Q. Thence  $\text{S } 74^{\circ} \text{ W } 26 \text{ poles}$  to a point 2 poles  $\text{S } 16^{\circ} \text{ W}$  from 2 sugar trees, designated on said plat by the letter P, west corner to David Bradford's survey no 3136 and south corner to John Morris's survey no 4121.

May 20<sup>th</sup> Beginning at the red oak stump at it thence  $\text{S } 15^{\circ} \text{ E } 408 \text{ poles}$ , (crossing a branch at 28 poles a spring branch at 46, another at 84, a branch to link water at 120, a branch 10 links water at 149, a road at 164 poles, a branch at 172, at 204 poles passing a point  $\text{S } 75^{\circ} \text{ W } 204 \text{ poles}$  from the place where Isaac Jean's house stood, which house is represented on said plat by Jean's house, which <sup>said</sup> place is the same which was pointed out to me by James M. Person and referred to in his deposition on page 26 of the said depositions before referred to; also ~~the~~ pointed out to me by John Story and referred to in his answer to the 2<sup>d</sup> interrogatory in his deposition before referred to; and also the same place as referred to in the answer of John McDonald to the 4<sup>th</sup> interrogatory put to him by the depts on the 24<sup>th</sup> page.

45  
of the depositions before referred to, passing a sugar tree  
at 280 poles, about 2 poles to the east, bearing old marks  
as a side line on its west side, crossing a spring  
branch at 292, a branch which water at 366 poles  
to a place designated on said plat by the letter F  
where the timber has been much destroyed by storm  
and fire; some beech, sugar trees, and poplar are ly-  
ing round, and the small bushes are very thick—  
Thence S 74° W 65 poles crossing a small branch at 50,  
passing at 62 poles through a thicket of small dogwoods  
hickories, and iron woods, to a small branch, repre-  
sented on said plat by the G and B. — Thence S 16° W  
100 poles, passing a beech at 20 poles about 4 poles to the  
east bearing old line marks, crossing a small spring  
branch at 160 poles, and the south line of Charles Spen-  
cer's survey S 57° 38', and the north line of John  
Galloway's survey S 64° 50' at 224 about 24 feet  
west from a lynn ash and red oak, corner to said  
survey and designated on said plat by the figure  
H, crossing a spring branch at 342 poles, near its  
head, a branch which water at 378, and said Spen-  
cer's north line at 380 poles, about 24 poles S 80° W from  
3 sugar trees and white walnut (all down, represented  
on said plat by the figure I) to a line at the point  
designated on said plat by the letter K. — Thence  
S 74° E 360 poles, crossing a road at 112, a branch at  
142, 5 poles from its junction with the River 192 or  
more mouths, coming to the bank of Chad River at  
164 poles, continuing down it 10 poles, crossing a  
spring branch at 206 poles, passing over a  
high knob, to a branch represented represented  
on said plat by the letter L —  
May 22<sup>nd</sup> went to the sugar tree at the letter E — Thence  
S 75° W 208 poles, (crossing sugar camp branch at  
58, and Chad River at 176 poles) to a point 218 poles  
S 15° E from the point Isaac's house. — From  
The red oak stump at the letter A — west 62 poles

46  
to 3 sugar trees, designated on said plat by the letter M, comes to William Thom's survey no 6447 and south west corner to John Galloway's survey no 6450. Thence south 57 poles to a standing, lynn and sugar tree, and a black walnut and elm stump corner to Thom's said survey, and south east corner to Alex. S. Dandridge's survey no 3220 at the letter N. Returned to the red oak stump at A. thence S 75 E 408 poles, passing a beech at 5 poles, marked as follows, to wit: On its south side with a tomahawk, are 3 marks 2 1/2 and 4 inches apart on the easterly side near the ground are 4 hacks 2 and 3 inches apart nine inches above the upper one of these is the 1<sup>st</sup> one of 3 more, 2 and 5 inches apart; on the northerly side are 3 hacks contained in 6 inches on the westerly are 3 contained in 5 inches; on this tree among the hacks are the effigies of 2 Indians sketched in the bark; from this tree stands another beech 2 poles distant bearing a similar of figgy, all apparently of the same age which is old, crossing a branch 6 links water at 62 poles a spring branch at 90 poles, a road at 158, passing a sugar tree at 154, with 2 marks as a line on its south side, crossing the tail race from James Sawmill at 180, passing 2 poles to the north at 184 poles with old line marks on it, 3 poles to the near the bank of Mad River stands a buckeye which much resembles an old lime tree from which we took block no 3, crossing Mad River at 236, a branch at 336, passing a sugar tree with an old mark on its west side at 370 poles to a point 8 poles south from the sugar tree, from which we took block no 1 and represented on said plat by the small a near B. I certify that the survey adjoining the representative of James Calderwood surveys as

47  
represented on the following plat are generally laid from the original surveys as returned into Col. Anderson's Office, by course and distance.

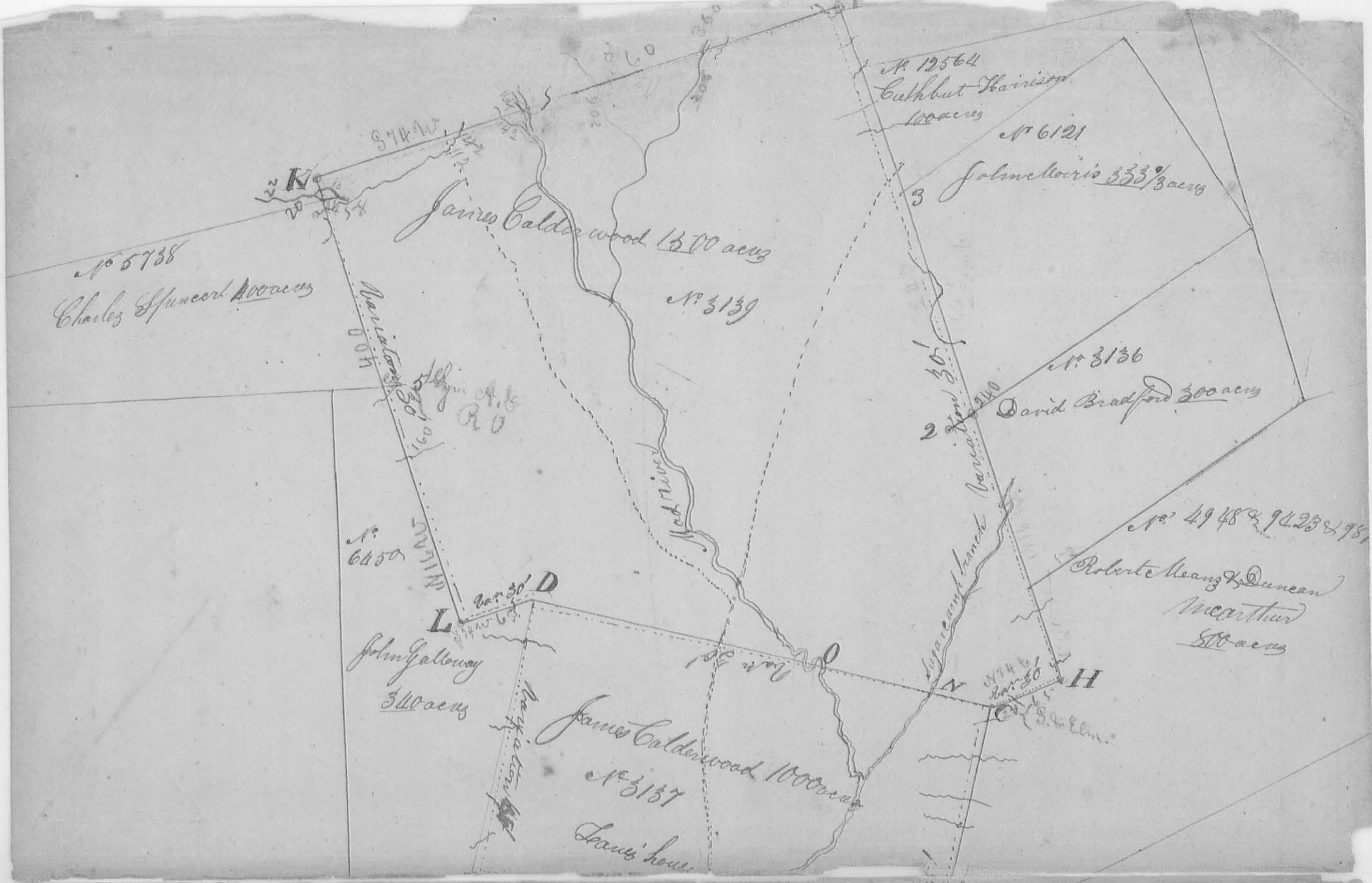
In making above surveys of Calderwood's I have noted one or more of the corners to each survey laid down adjoining the same. - I had the patents which were granted to Lucas Sullivan in 1800 for the survey  $r^{\circ} 3137$  of 1000 acres, survey  $r^{\circ} 3138$  of 780 acres, and survey  $r^{\circ} 3139$  of 1500 acres, and run the courses called for in said patents, some of the lines were run reversing the courses called for in the patents. - The 1000 acres  $r^{\circ} 3137$  Beginning with the patent at the point A as represented on the following plat runs thence  $S 75^{\circ} E$  400 poles to B thence  $N 75^{\circ} E$  400 poles to C, thence  $S 75^{\circ} W$  400 poles to D thence  $N 75^{\circ} W$  400 poles to the beginning.

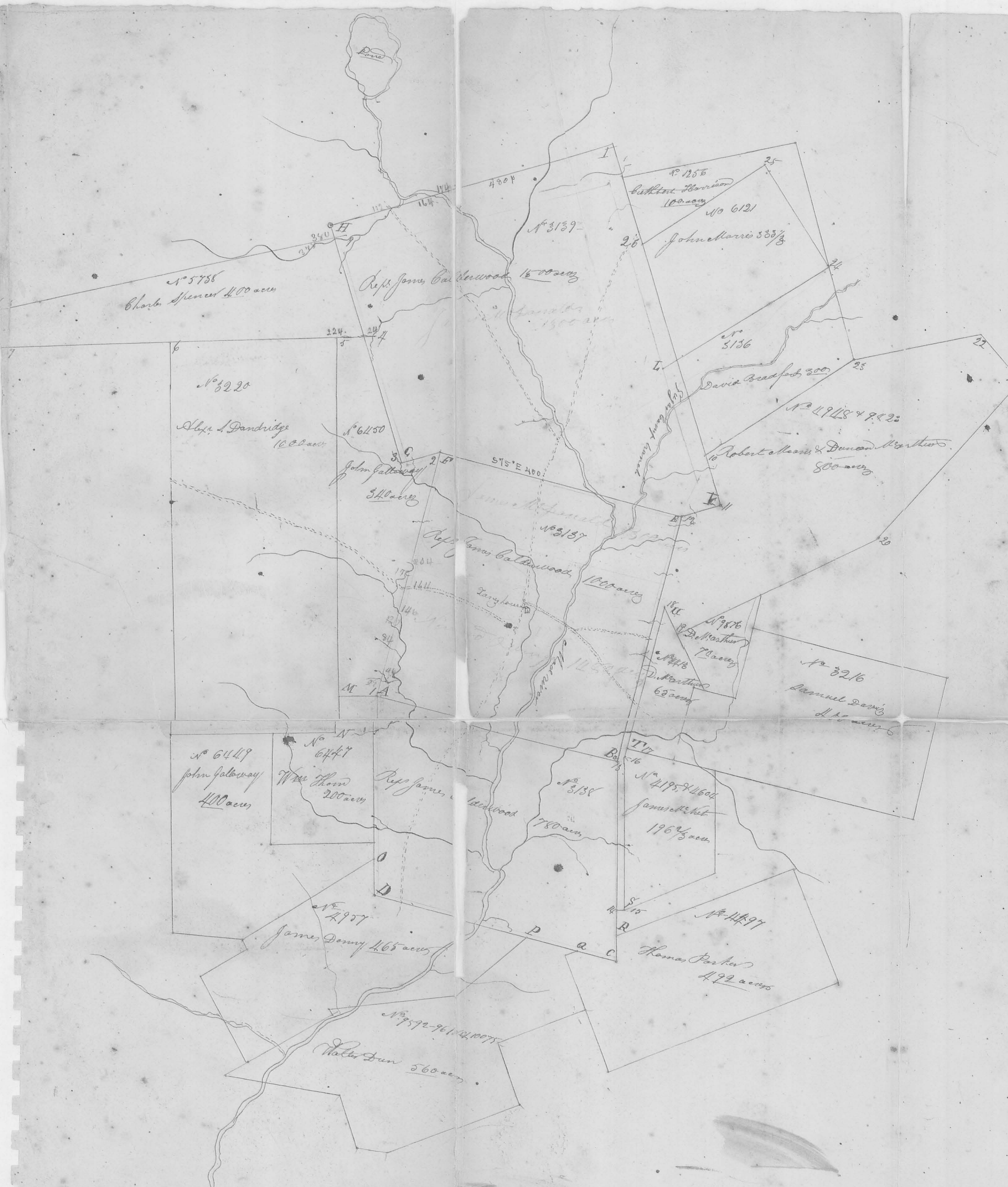
The 780 acres  $r^{\circ} 3138$  begins at the said point A runs thence  $S 75^{\circ} E$  400 poles to B thence south 320 poles to C thence  $N 74^{\circ} W$  400 poles to D thence north 390 poles to the beginning.

The 1500 acres  $r^{\circ} 3139$  begins at the point F runs thence  $S 75^{\circ} E$  400 poles to G, thence  $N 74^{\circ} E$  65 poles to H, thence  $N 76^{\circ} W$  610 poles to I, thence  $S 74^{\circ} W$  480 poles to J thence  $N 75^{\circ} E$  400 poles to K, thence  $S 74^{\circ} E$  65 poles to the beginning.

I meandered Mad River from Ludlow's line trap to the point represented on said plat. - also meandered sugarcamp branch from its junction with Mad River up as far as it is laid down which said sugar camp branch, as well as Mad River is laid on the said plat from the survey thereof.

The said sugarcamp was 15 links wide at its junction, nearly eddy water; Mad River 26 link water at said junction running rapidly. The said sugar camp branch is about one third as large as Mad River at this place. - The point  $\gamma$  James house as represented on said plat by James house is the same as pointed out to me and referred to in the depositions of John Story, John McDonald and





This connection of survey was made and  
 returned for the defendants in the foregoing  
 cases or suits of judgment as what is written before  
 with more fully explain  
 J. W. Marrison  
 S. d.

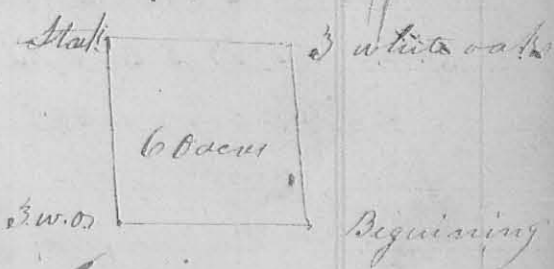
Mad River  
 Ludlow Line



James McPherson, heretofore referred to, is very near  
 the center of the survey of 1500 acres no 2137 as survey  
 and laid down on the foregoing plat. From which  
 said point to the junction of Sugar camp branch  
 and Mad river is about 516 180/poles. The red  
 drawn lines represent the plaintiff's claims  
 respectively, on which their names are written  
 in red.

Robert McPherson }  
 James Mathews }  
 County Surveyor

11<sup>th</sup> mo. (Nov.) 7<sup>th</sup> 1826 Survey no. 60  
 Surveyed for Stewart and Rea as follows  
 Beginning at a small red oak stump and  
 2 white ash, one them which is marked  
 "X" S of B bears S 72° W 44 links distant  
 all in the Greenville treaty line, thence  
 S 78° W with said line 99.2 poles to 3 white oaks  
 thence S 20° W 99.2 poles to a stake in a pear  
 thence S 78° E 99.2 poles to 3 white oaks in the  
 east line of the original, thence S 20° E 99.2  
 poles with said line  
 to the beginning containing  
 Sixty acres

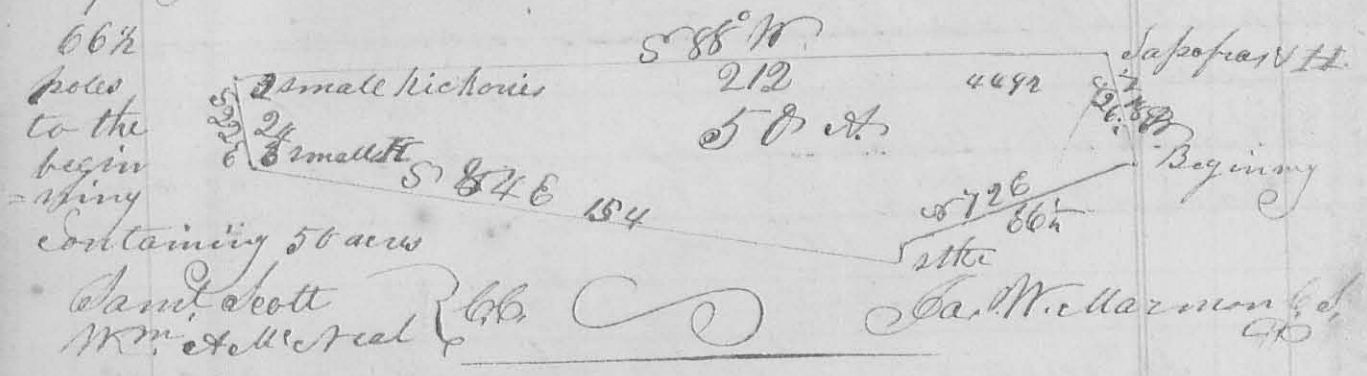


James Cooper }  
 George Finston }  
 J. W. Harmon  
 County Surveyor

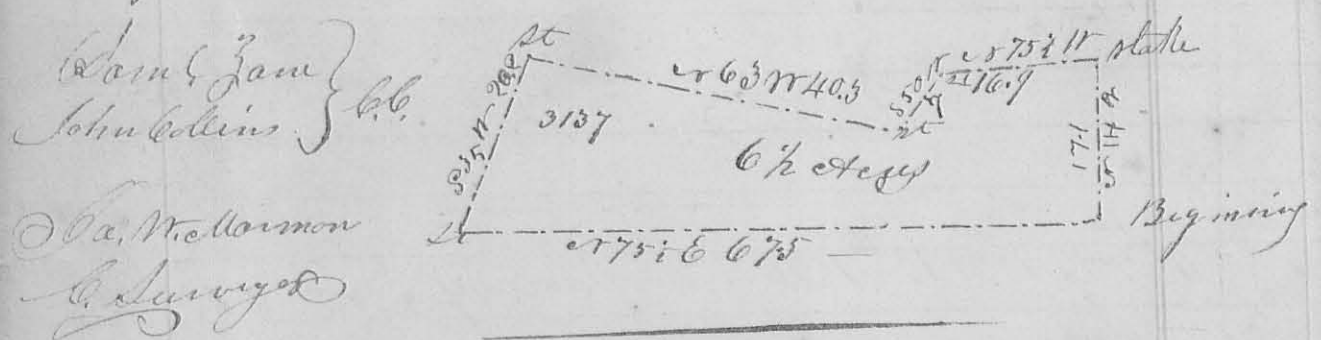
11<sup>th</sup> mo. (Nov.) 10<sup>th</sup> 1826 Survey no. 61

Surveyed for William S. Mc Neal as follows. Begin  
 ning at the northeast corner of James Pours a  
 white oak in the east line of Jesse Davis's survey  
 No. 4492, thence S 18° W 26 3/4 poles, with said line  
 to 2 small Sassafras, and white oak thence  
 S 88° W 212 poles to a stake and 2 small hickories

in the west line of Davis's said survey, thence  
 with said line, S 22° E 24 poles to 3 small hickories  
 in said line, and corner to Samuel Scott's land  
 thence with the north line of Scott's land S 82° E  
 154 poles to a stake in a barren, thence  $\text{r} 5^{\circ} \text{W}$   
 3 poles to a stake in said barren thence  $\text{r} 72^{\circ} \text{E}$   
 66 1/2

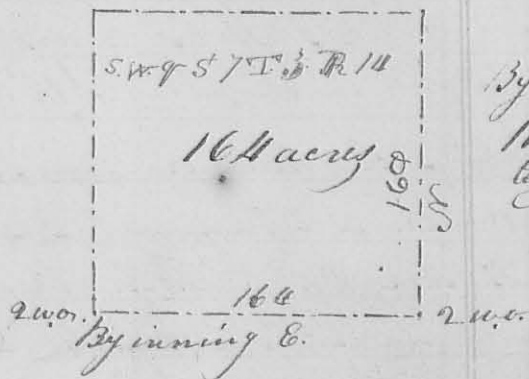


1<sup>st</sup> Mo (Jan.) 31<sup>st</sup> 1827 of Surveyor  
 Surveyed six and a half acres of land for Lanson  
 Curtis. Beginning at a stake in the line between  
 Ebenezer Lane and Alex. Long where said line  
 crosses the road leading from Zanefeld to Rip-  
 per Sandusky, thence  $\text{r} 14^{\circ} \text{E}$  171 poles to a stake  
 on the west side of said road, thence  $\text{r} 75^{\circ} \text{W}$  16.9  
 poles to a stake, thence  $\text{r} 5^{\circ} \text{W}$  7 poles to a stake near  
 a small walnut thence  $\text{r} 63^{\circ} \text{W}$  40.3 poles to a stake  
 thence  $\text{r} 35^{\circ} \text{W}$  20.2 poles to said line, thence with said  
 line  $\text{r} 75^{\circ} \text{E}$  67.5 poles to the beginning, contain-  
 ing 6 1/2 acres; part of Surveyor 31<sup>st</sup> 27



1<sup>st</sup> Mo (Feb.) 6<sup>th</sup> 1827 of Surveyor 63 (8198)  
 Surveyed the S.W. quarter of Section 7 Town 3 Range  
 14. E. of the great Miami for George St. Dunn. Beginning  
 at the south west corner of said Sec. original bear-  
 ing trees now standing a white oak 22 inches in

58  
 diameter & 69° E 51 links distant, a white oak 18  
 inches in diameter & N 48° W 56 links distant, thence east  
 with the south line of the section (allowing 1/2° easterly  
 variation) 164 poles to the original quarter section corner  
 a white oak 12 inches in diameter & S 9° W 112 links dist.  
 a white oak 17 inches in diameter & S 7 1/2° E 104 links dist  
 thence north 160 poles to a  
 stone a white oak 26 inches  
 diam. & S 85° E 31 links, a  
 white oak 24 inch  
 diam. 18 links north  
 thence west thence west  
 1/2° variation allowed  
 164 poles to a stone in  
 the west line, a small  
 blue oak S 50° E 28 links distant, thence south 160 poles  
 to the beginning containing 164 acres

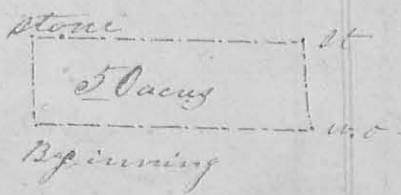


By a scale of  
 110 poles  
 to the inch

John Doke  
 James Steinhouse } Ch. J. W. Harmon  
 C. Surveyor

2<sup>nd</sup> mo. (Feb) 7<sup>th</sup> 1827 Survey & Co. 64 (8198)

Surveyed 50 acres of land for James Craig: Beginning at  
 the S. W. corner of section 7 Town. 3 Range 14 E. of the Great Mi-  
 -amie a white oak 18 inches in diam. N 48° W 56 links dist.  
 a white oak 22 inches in diam. & 69° E 51 links; thence east  
 with the south line of said section (allowing 1/2° easterly  
 variation) 164 poles to the original quarter section corner  
 a white oak 15 in. in diam. & S 9° W 112 links dist thence  
 a white oak 17 inches in diam. & S 7 1/2° E 104 links dist. thence  
 north 148 7/8 poles to a stake  
 thence west 164 poles to a stone  
 and white oak 20 in. in diam.  
 & N 74° W 9 links dist. 2 black  
 oaks growing from one root  
 south 22 links; thence with the west line of said sec. 148 7/8  
 poles to the beginning containing 50 acres



James Steinhouse } Ch. J. W. Harmon  
 & John Doke } C. Surveyor