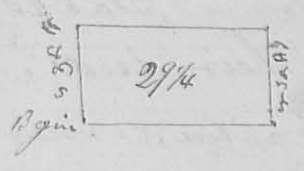


76 12<sup>th</sup> mo. (Dec) 2<sup>th</sup> 1827 (8217) ✓ Survey No 95 76

Surveyed for Charles Drinnay. Beginning at the South west corner of Philip Daughter's survey no 3154 a large ash, sugar tree, and cypress stumps, thence ~~88~~ 98 poles N 88° W (cypress a small branch at 12 poles) 49 poles to a stone near a large oak; thence N 51° E 98 poles to a stone in John Woodman's west line - thence with Woodman's line N 38° E 49 poles to a stone corner to Woodman's land thence with the north line of Philip Daughter's said survey N 58° 41' W 98 poles to the beginning containing 29 1/4 acres part of Philip Clayton's survey no 3164

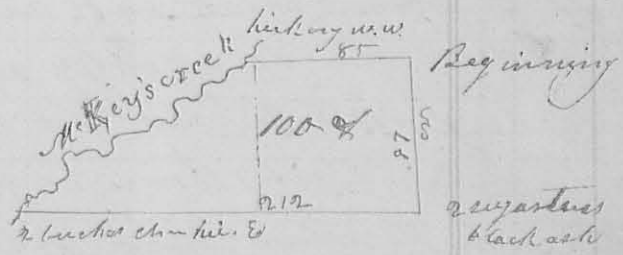
Stacy Smith  
John Woodman } Co

J. W. Mearns & Co



1<sup>st</sup> mo. (Jan) 7<sup>th</sup> 1828 ✓ Survey No 96 (8219)

Surveyed for Edward Marow. Beginning at a dog wood and iron wood C. C. corner to Joseph Dickinson's land on the head of Mr Key's creek, and in the east line of Alexander Sandridge's survey no 3220; thence, west with the south line of Dickinson's land 85 poles to a hickory and 2 white walnuts on the west bank of said creek; thence down the creek with its meanders, to 2 swamp beeches, hickory and elm on the west bank thereof 7 poles south of the road from Bellefontaine to Jonesfield; thence east 212 poles, to 2 sugar trees and black ash in the original line thence with said line north 97 poles to the beginning containing 100 acres -- part of Sandridge's said survey --



I also ran a line through said 100 acres beginning at a sugar tree and ash in the north line 82 poles from the beginning corner; thence south 97 poles to a cypress in the south line dividing the 100 acres into 2 equal parts

Wm Smith  
Arch Walker } Co

J. W. Mearns & Co

2<sup>nd</sup> mo, Feb. 8<sup>th</sup>. 1828

From a devious line for William Sharp and others, beginning at 2 blue ash & 2 sugar trees and 2 mulberry trees (the mulberry trees and one of ash are fallen) corner to James Galloway's Survey or 7<sup>th</sup> and south west corner to Wm Sharp's 80 acres, conveyed to him by said Galloway (south east corner to — Black's land; thence according to the calls of their deeds  $r 15^{\circ} E$  64.8 poles to a dog wood elm and sugar tree, corner to Galloway's said survey, and on the west side of the road from Garwood's mill to Wrenana, found them one pole to the east; thence the true bearing of this line is  $r 15^{\circ} 5' E$ . — It then corrected the line by running back  $r 15^{\circ} 5' W$  to the place of beginning. J. M. Newman S. L. C.

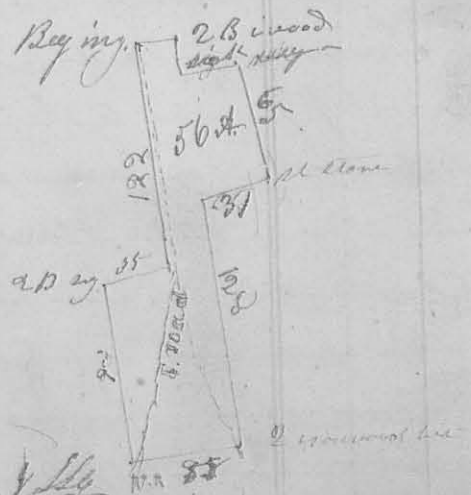
(8169)

2<sup>nd</sup> mo, Feb. 18<sup>th</sup>. 1828

Survey or 97

Surveyed for Simon Kenton jr

Beginning at a sugar tree, and creek on the west side of the road from Zanesfield to Sandusky  $r. E.$  corner to Isaac Zanis land; thence  $r 80^{\circ} E$  20 poles to 2 beeches and ironwood <sup>to a creek on the north side of a fence thence  $r 80^{\circ} E$  8 poles</sup> thence  $r 10^{\circ} E$  18 poles to a sugar tree and blue ash; thence  $r 20^{\circ} E$  65 poles to a stake and stone; thence  $r 2^{\circ} 30' W$  31 poles to a stake on the south side of a fence; thence  $r 10^{\circ} E$  128 poles to 2 ironwoods and beech in the south line of William Cochran's survey or 343<sup>7</sup>; thence  $r 80^{\circ} W$  58 poles to a small white oak and large stone on the east side of the Sandusky road; thence  $r 10^{\circ} W$  93 poles to a sugar tree and beech; thence  $r 80^{\circ} E$  35 poles, to where stood a sugar tree and 2 beeches on the west side of the road, corner to Isaac Zanis land; thence with the east line of his land  $r 10^{\circ} W$  122<sup>1</sup> poles to the beginning containing 56 part of Cochran's said survey — J. M. Newman S. L. C.

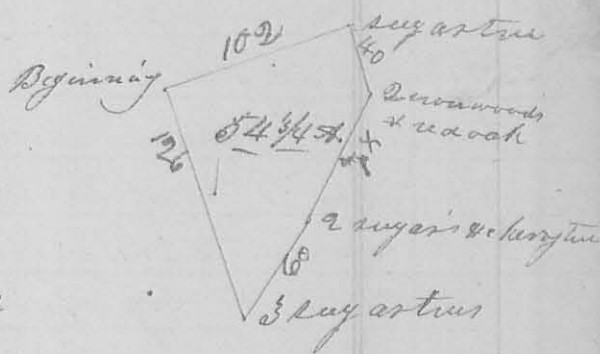


3<sup>rd</sup> Mo. (March) 21<sup>st</sup> 1828

Survey No. 98

Surveyed for Nicholas Williams and George Green,

Beginning at a red oak, black walnut and sugar tree N.W. corner to Augustine J. Smith's survey 3226 on Machachac thence  $\text{W } 21^{\circ} \text{ E}$  with the original line, 126 poles to 3 sugar trees thence  $\text{N } 52^{\circ} \text{ W } 60$  poles to 2 sugar trees and small cherry tree; thence  $\text{N } 25^{\circ} \text{ W } 67\frac{1}{2}$  poles to 2 small ironwoods and red oak in a line between Green and Stanby, thence  $\text{N } 21^{\circ} \text{ W } 40$  poles to a sugar tree in the north line of the original survey, thence with said line  $\text{W } 69^{\circ} \text{ N } 102$  poles to the beginning containing  $54\frac{3}{4}$  acres in the N.W. corner of Smith's said survey.



James Stanby }  
George Johnson } *ls.*

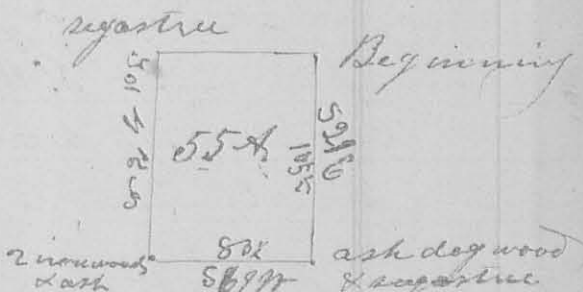
J. M. Harmon *ls.*

3<sup>rd</sup> Mo. (March) 21<sup>st</sup> 1828

Survey No. 99

Surveyed for Nicholas Williams & James Stanby

Beginning at a hickory in the north line of A. J. Smith's survey 3226 on Machachac, thence  $\text{W } 21^{\circ} \text{ E}$  105 poles to 2 ironwoods and ash and small sugar tree - thence  $\text{S } 69^{\circ} \text{ W } 83\frac{1}{2}$  poles to 2 ironwoods and ash in a line between Williams & Stanby - thence  $\text{N } 21^{\circ} \text{ W } 105\frac{1}{2}$  poles to a sugar tree in the north line of the old survey - thence with said line  $\text{N } 69^{\circ} \text{ E } 83\frac{1}{2}$  poles to the beginning containing fifty five acres.



George Green }  
George Johnson } *ls.*

J. M. Harmon *ls.*



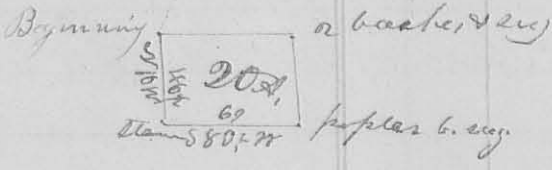
9588

3<sup>rd</sup> Mo. March, 28<sup>th</sup> 1828 Survey No. 100 79

Surveyed for Isaac Lane

Beginning at a small white oak and stone in the south line of William Cochran's survey n<sup>o</sup> 3407 on Mac River and C. W. corner to Daniel Butters land; thence with the line between Butters and Lane N 10 W 46 1/2 poles to a stone - thence S 80 1/2 W 69 poles to a large poplar tree, & sugar tree in the west

line of the original survey  
thence with said line N 10 E



(cropping 2 small branches)  
46 1/2 poles to 2 beeches and

C. W. corner to the original survey - thence N 80 E 69 poles to the beginning containing 20 acres in the SW corner of Cochran's said survey

C. W. corner

4<sup>th</sup> Mo. April, 8<sup>th</sup> 1828 Survey No. 101

Surveyed for - M<sup>r</sup> Kay of Virginia at the request of Jose H. Garwood -

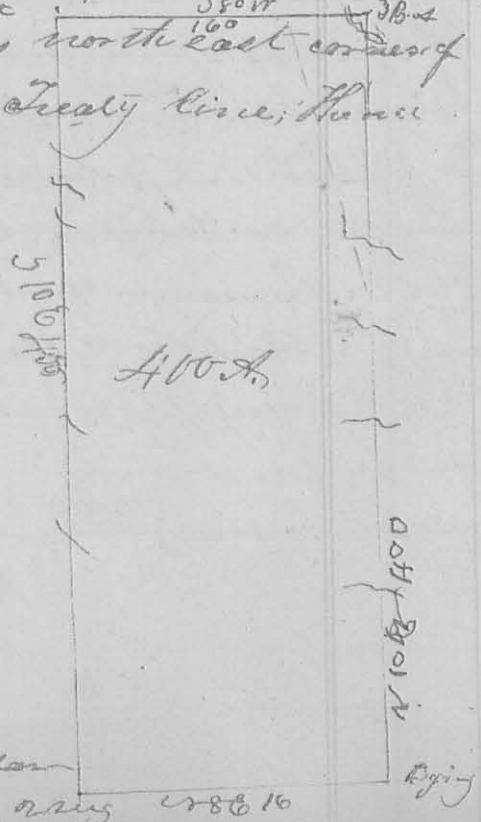
Beginning at an ash, beech, white oak and hickory, south east corner to George McCredie's survey n<sup>o</sup> 3314 on Mill Creek - thence N 10 E (cropping a branch at 102 poles, another at 140 poles, another at 236, a road from Garwood's mill to Sandlesby at 240 poles, a branch at 280 poles, Mill Creek at 380)

400 poles to an ash and 2 beeches north east corner of said survey, in the Greenville Treaty line; thence with said line S 80 W

(cropping Mill-Creek at 10 poles, said road at 30 poles, 160 poles to a stake in the south side of fallen timber - thence N 10 E, crossing

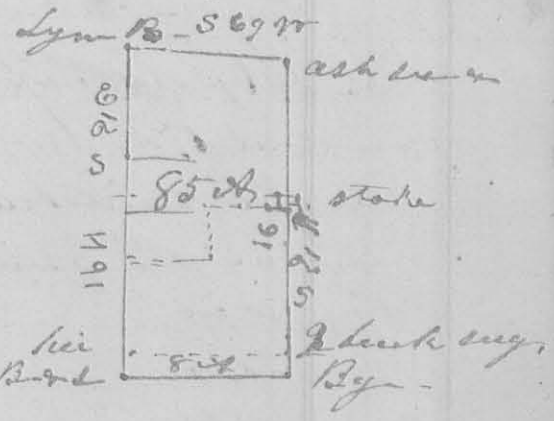
several small branches 400 poles to 2 small sugar trees hickory and ash in the south line of the survey - thence N 80 E (cropping a branch 160 poles to the beginning containing 400 acres off the east side of said survey

Jose Garwood, Benjamin Pickens, John Garwood marks 160, say 1880 16



Beginning at a beech and fallen sugar tree, the north east corner to John Williams land in the east line of Holland & Hancey's survey 3223 (here I marked 3 beeches, thence with said line  $S 11^{\circ} W$  crossing a spring branch at 32 poles a drain at 42 poles, 104 poles to a beech sugar tree and fallen ash; thence  $S 69^{\circ} W$  83 poles to a beech lynch and fallen sugar tree, north east corner to William Green's land

thence with Green's line  $S 21^{\circ} E$  crossing a drain 104 poles to a sugar tree and beech in the north line of Williams' land and  $S 21^{\circ} E$  corner to Green - thence  $E 69^{\circ} E$  83 poles to the beginning containing 85 acres part of Hancey's said survey.



- I made the following

division (to wit) beginning at 2 beeches and sugar tree north of the east named <sup>or beginning</sup> corner  $7 3/4$  poles; thence  $S 69^{\circ} W$  83 poles to a hickory, sugar tree, and water beech in the west line of this survey - thence with said line  $S 21^{\circ} E$   $7 3/4$  poles to a sugar tree and beech  $S. W.$  corner to the survey; thence  $E 69^{\circ} E$  83 poles to the beginning 8 acres.

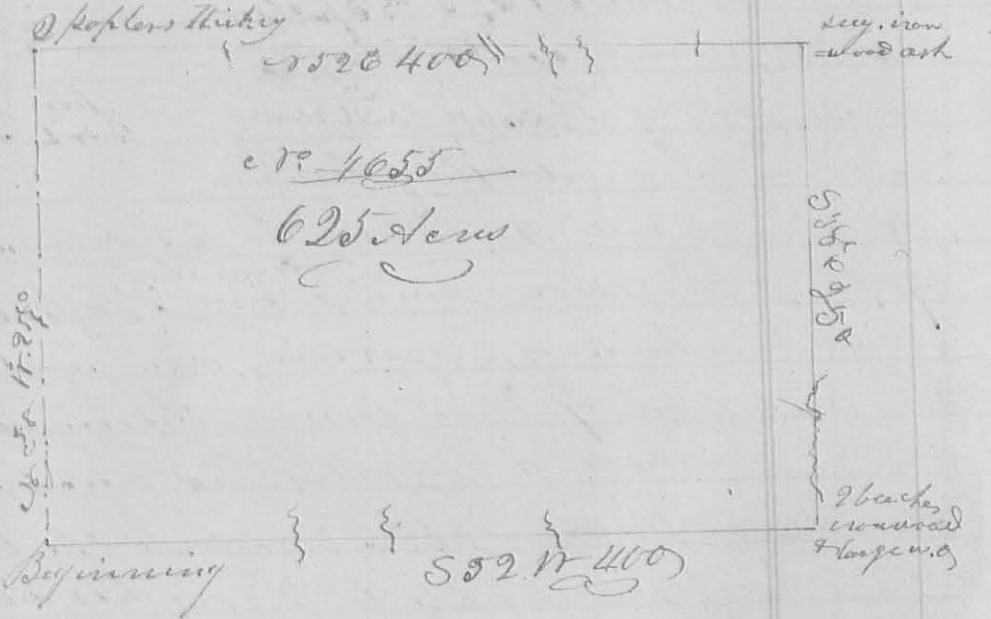
Thence beginning at the 2 beeches and sugar tree aforesaid in the east line; thence with said line  $N 21^{\circ} W$   $7 3/4$  poles to a stake; thence  $S 69^{\circ} W$  42 1/2 poles to a stake; thence  $S 21^{\circ} E$  36 poles to a stake; thence  $S 69^{\circ} W$  41 poles to a small mulberry tree in the east line of Green's land, - leaving 5 acres in the north end of this survey - 10 102

David Warner }  
 Samuel Warner } *CC* J. W. Marnon  
 J. W. Marnon

Beginning at 2 beeches, westerly corner to Philip Langton's survey, no 3164, and  $S. W.$  corner to Lemelling Jones' survey, no 4655

one of the beeches being dead I marked a sugar tree  
 thence  $r 38^{\circ} W 250$  poles, crossing Beaver Run a branch of  
 Darby's Creek, at 117 poles, to 2 poplars and hickory north  
 west corner to Jones's said survey (one of poplars is  
 broken off about 20 feet high) - thence  $r 52^{\circ} E 400$   
 poles, crossing a branch at 103 poles, one at 166, the road  
 from Jamesfield to Garwood's Hill at 236, a branch at  
 263, one at 268, and one at 384 poles, to a sugar tree  
 ironwood and ash, and found them 3 poles to the left hand  
 (thence the present bearing of this line is  $r 52^{\circ} 42' E$  - thence  
 $S 38^{\circ} 25' W$  poles, crossing the branch from Levi Garwood's  
 Spring at 174, and the road from Jamesfield to Garwood's  
 mile and said branch at 188 poles, crossing again several  
 times), but

finding no cor-  
 -ner as called for  
 by Jones and bloy  
 -ton's survey, I  
 marked 2 beeches  
 ironwood and  
 large white oak  
 thence  $S 52^{\circ} W$   
 $400$  poles, crossing a  
 branch at 138, one  
 at 224, one at 272



poles to the beginning containing 625 acres, being Lew-  
 elling Jones's Survey entire, on the waters of Darby's Creek;  
 Carlisle Austin }  
 Macy Smith }  
 J. McWhirmon

5th mo. May 17<sup>th</sup> 1828 Survey No 104  
 Surveyed a lot for Ebenezer Jones  
 Beginning at a stake on the east side of the Sandusky road  $r 15^{\circ} E$   
 70 feet from the north west corner of lot no 7 in Jamesfield  
 thence  $r 15^{\circ} E$  70 feet to a stake on the east side of said road  
 thence  $r 73^{\circ} E$  160 feet to a stake, thence  $S 5^{\circ} W$  70 feet to a stake  
 thence  $r 73^{\circ} W$  160 feet to the beginning containing 1200 approx.  
 Levi Austin }  
 Daniel Austin }  
 J. McWhirmon



6<sup>th</sup> June 16<sup>th</sup> 1828

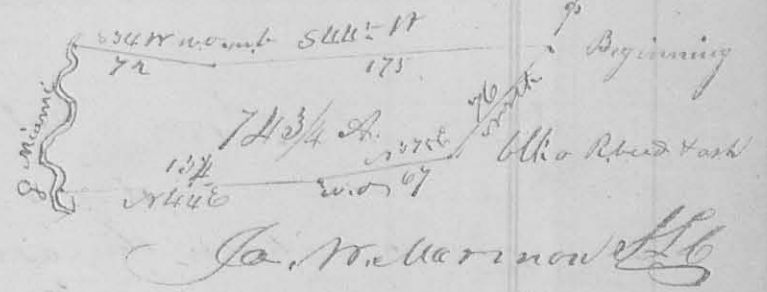
Survey No 105

8224

Surveyed for William Dixon

Beginning at 2 small white oaks cherry tree bush and ash in the east line of fractional section 15 Town. 2 Range 16 N.W. South east corner to James Moore's land - Thence S 44<sup>o</sup> W 175 poles to a white oak, mulberry tree, and iron wood. Thence S 44<sup>o</sup> W 72 poles to a hack berry and bur oak on the east bank of the Great Miami river, south west corner to said Moore's land. - Thence down the river with its meanders to a large red oak, 2 buckeyes and small beech, corner between William and Thompson Dixon - Thence S 44<sup>o</sup> E 134 poles to a large white oak thence S 77<sup>o</sup> E 67 poles to a black oak and red bud and ash in the east line of said fraction. Thence with said line north 76 poles to the beginning contain- ing 74 1/4 acres of said fractional section.

John Dixon }  
Thompson Dixon }



6<sup>th</sup> Mo. (June) 17<sup>th</sup> 1828

Survey No 106

8224

Surveyed for Thompson Dixon

Beginning at a black oak, red bud, and ash in the east line of fractional section 15 Town. 2 Range 16 N.W. corner to William Dixon's land. Thence S 37<sup>o</sup> W 69 poles to a large white oak, in a road - Thence S 44<sup>o</sup> W 104 poles to 2 buckeyes, small beech, and large red oak on the east bank of the Miami River, South west corner to William Dixon's land, thence down the river with its meanders to a large cluster of maples growing from one root on the east side of the river. Thence S 33<sup>o</sup> E 19 1/2 poles to a stake thence S 25<sup>o</sup> W 8 poles



83  
 43  
 thence  $\angle 67^{\circ} N 31.8$  poles to a stake south of an orchard, thence  
 $\angle 27^{\circ} N 30$  poles to a stone, thence  $\angle 47^{\circ} N 7.8$  poles to a stake  
 thence  $\angle 28^{\circ} N 8.2$  poles to a stake in the lane and road from  
 Bellefontaine to Sydney. thence with said road  $\angle 55^{\circ} 46$   
 $7 1/2$  poles to a stake in the east line of said fraction  
 thence  $\angle 60^{\circ} E 69$  poles to a stake, thence north  $46$  poles  
 to 2 white oaks, thence west  $62$  poles to a stake in  
 the east line of said said fraction, thence north  
 with said line  $19$  poles to the beginning, contain-  
 -ing  $75$  acres,  $2 \frac{1}{2} \%$  of which are in the south west quar-  
 -ter of Sec. 9 Town 2 Range 14 M.R.

William Dixon }  
 John Dixon } 186

Ja. W. Barmen }  
 J. L. G. }

8229  
 6th mo. (June) 17<sup>th</sup> 1828. Survey No. 107  
 Surveyed  $75$  acres of land for John Dixon beginning  
 at a bottom oak on the east bank of the Miami  
 River corner to fractional Sec. 14 Town 2 Range 14  
 M.R. thence north  $89$  poles to the corner between Sec 1  
 8, 9 14 & 15 thence east  $62$  poles to a stake thence north  
 $116$  poles to a stake thence  $\angle 60^{\circ} W 69$  poles to a stake in  
 the road from Bellefontaine to Sydney and in the  
 east line of fractional Sec. 15. thence with the road  
 $\angle 55^{\circ} 46 N 7 1/2$  poles to a stake thence  $\angle 28^{\circ} E 8.2$  poles to a  
 stake, thence  $\angle 47^{\circ} E 7.8$  poles to a stone, thence  $\angle 27^{\circ} E 30$   
 poles to a stone, thence  $\angle 67^{\circ} E 31.8$  poles to a stake south  
 of an orchard, thence  $\angle 31^{\circ} E 10$  poles to a stake thence  
 $\angle 47^{\circ} W$  to a stake on the river bank, thence with the  
 meanders of the river to the beginning containing  
 $75$  acres  $2 \frac{1}{2} \%$  of which are in  
 Sec 14 & 15 the remaining  $2 \frac{1}{2} \%$   
 are in Sec 9 M.R.

Wm. Dixon }  
 Thompson Dixon } 186



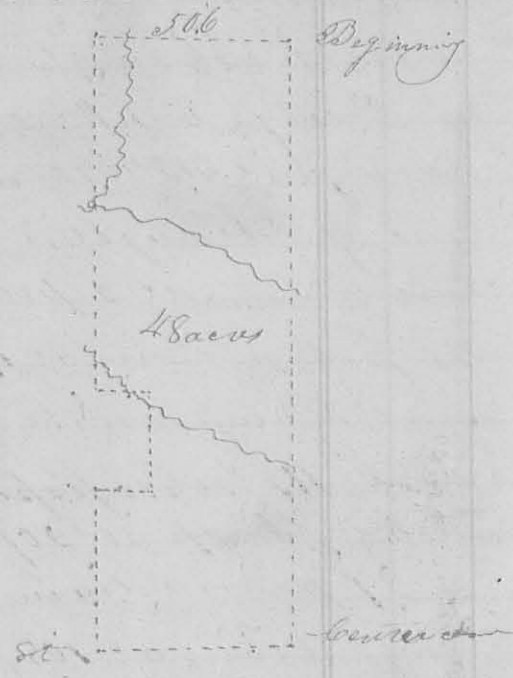
84 6<sup>th</sup> mo. June, 25<sup>th</sup> 1825. (2225) Survey N<sup>o</sup> 108 84

Surveyed 137 1/4 acres of land for Daniel Stratton  
 Beginning at a buckeye divided into 3 trunks and  
 a black ash on the east bank of Beaver run a branch  
 of Darty's Creek, easterly corner of Philip Slaughter's  
 survey No. 354, thence east with the southerly  
 line of Slaughter's survey S 16 1/2° W 196 poles crossing  
 beaver run at 2 poles, a branch at 8 1/2 poles (rather at  
 99 poles a drain at 170 poles) to a stone 2 dog woods and  
 beech stump on the easterly side of a drain - thence  
 S 38° E 115 poles, passed a hickory and beech corner to  
 Joshua Sharp at 20 poles, crossed Sharp's spring branch  
 at 27 poles, a drain at 50 poles, a branch at 90 poles  
 and a drain at 105 poles to 2 sugar trees and beech -  
 thence N 46 1/2° E 190 poles, crossed beaver run at 74 poles, and found a tree  
 oak white oak and black ash corner  
 5 poles northerly, hence the true bearing  
 of this line is N 45° E - thence N 88° W 88  
 passing an ash elm and buckeye  
 was terly corner to Warner's land  
 110 poles to the beginning contain-  
 ing 137 1/4 acs in the N. E. corner of  
 George McCredie's survey No. 5. James Warner S. L. C.  
 Daniel Warner }  
 David Warner }

(9589) 7<sup>th</sup> mo. July 7<sup>th</sup> 1825 Survey N<sup>o</sup> 109

Surveyed 48 acres for James M. Blair and John Powell  
 Beginning at a stone in the road west of Bellefontaine in  
 the north of Sec. 34 Town. 4 Range 14 N. 14 W which stone  
 is the 90<sup>th</sup> Sec. corner and 160 poles from either of the north-  
 -erly corner of the Sec. thence west with laid line and  
 road 50.6 poles - set a stake on each side of the road,  
 thence South 1° W, crossing a small branch at 37 poles  
 set a stake at 66 poles, crossing a branch at 84 poles,  
 94 poles to a stake thence S 87 1/2° W 14 poles (crossing

85  
 a branch at 10 poles to a stake. - Thence S 17° 24 poles (copying a branch at 3 poles) to a stake. - Thence N 89 1/2° W 14 poles to a stake. - Thence S 17° 40 poles to a stake in the south line of the north west q. a white oak diam. 120 & 15 links dist. - Thence S 89 1/2° E. (set a stake at 25 poles) 50.6 poles to the centre corner of the sec. the stake having been removed and the bearing tree a live - one 12 in. diam. N 40° E 12 links dist. being cut down. I set another stake (see surveyors. 32, page 19). - Thence N 10° E 108 poles to the beginning corner (copying a branch at 48 poles and one at 100 poles) containing 48 acres off the east side of the N. W. q. in said sec. &c.

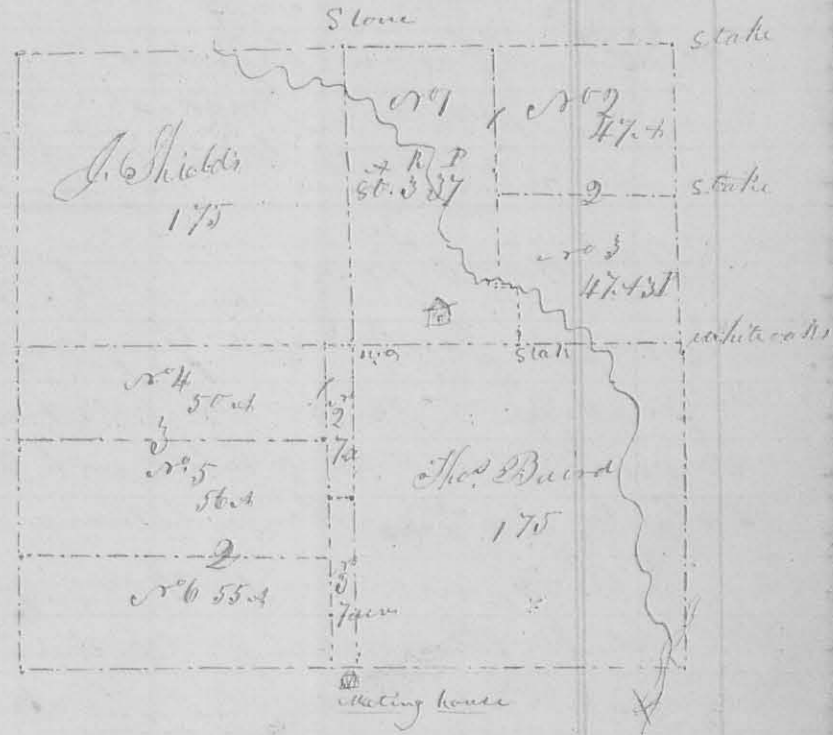


Jackson McClain } 66  
 Samuel Houser }  
 Jas. Williamson S.L.C.

7th mo. (July 25, 26, 27, 1828) Survey No 110  
 Surveyed and divided the north east and south west quarters of section 33 Town 5 Range 13 M.R.S. under the direction and by the orders of John Shelly, Jeremiah Fruton and John Moor, Commissioners appointed by the court of Comm. pleas in Logan County Ohio, to make partition of the estate of William F. well decd, equally to each of order of said Court to the Sheriff directed first with the cut line of the N. E. q. Beginning at the south east corner thereof in the east line of the section, a white oak 4 inches diam. S 72° E 13 links dist. a white oak 16 in. diam. N 29° E 11 links dist. - Thence north with the original line 86 1/2 poles to the north east corner thereof a stake in a prairie - Thence west 172 poles with the original line to a stone also comes to the N. E. q. - Thence South (copying a branch at 22 poles) 163 poles to the centre of the section, a white oak 20 in. diam. S 7° E 26 links - Thence east (copying

a branch at 150 poles) 172 poles to the beginning contain-  
 -ing 175 acres. - The 1<sup>st</sup> division line begins at a stake in  
 the north line of the gr 78.5 poles east of the stone  
 e. w. corner thereof. Thence south 142 poles to a stone on  
 the south bank of a branch. - Thence east 7 1/2 poles to a  
 stake in said branch. - Thence south 26 poles to a stake  
 in the orchard in the south line of this gr. making  
 the east line of lot no 1, which which contains 50 1/2  
 acres of 37 poles. - The 2<sup>nd</sup> division line begins at a stake in  
 the east line of the

gr 8 1/2 poles south  
 from the north east  
 corner thereof. thence  
 west 9 3/4 poles to a  
 stake in a hazel  
 thicket in the east  
 line of lot no 1 -  
 dividing the east  
 part of this gr into  
 2 parts containing  
 47 acres each. -



2<sup>nd</sup> the out line of  
 the south west gr. Beginning at the south west corner thereof, the ori-  
 ginal bearing trees yet standing, a bur oak 14 in. diam. e 25 1/2  
 36 links, a white oak 12 in. diam. S 6 1/2 W 42 links. - Thence  
 east 172 poles to a black oak 20 in. diam. S 52 1/2 E 33 links. -  
 Thence north 16 3/4 poles to the south west corner of the e. w. gr in  
 the center of the sec. - Thence west 172 poles to a bur oak  
 in the west line of the sec. - Thence with said line south  
 16 3/4 poles to the beginning, containing 175 acres. - The 1<sup>st</sup>  
 division line begins at a black oak bush in the north  
 line of this gr. 13.8 poles west from the centre corner of  
 the sec. - Thence south 8 1/2 poles to a stake. - Thence east 13 1/2  
 poles to a stake in the east line of this gr. - from the former  
 stake south 8 1/2 poles to a stake in a grave yard e 25 1/2 W  
 60 feet from David King's tomb, stone, making the ob-  
 -long lots 2 1/2, containing 7 acres each. - The 2<sup>nd</sup> line



87  
 begins at a stake in a road 55.6 poles north from the last named, and in the east line of lot no. 3 in this gr. Thence west 158.2 poles to a hickory 14 in. diam. 17 1/2 links, making the north line of lot no. 6 which contains 55 acrs. The 3<sup>rd</sup> line begins at a stake in the west line of the Sec. 56.7 poles north of the last named corner a white oak bush thence east 158.2 poles to a stake in the east line of lot no. 2 in this gr. making the north line of lot no. 5 which contains 56 acrs and the south line of lot no. 4 which contains 50 acrs. Houston Crockett } Clk. J. W. Marmore  
 Garland Crockett } S. G. S. L. C.  
 Cartmell Crockett master

9th mo 26<sup>th</sup> 1828 Survey No. 111

Surveyed for Vincent Gray and brother Elephas Gray  
 Beginning at the corner between sections 1 & 2, 7 & 8 in Town 5 N. 13 N. R. 13 N. W. a white oak 24 inches diam. 166° E 54 links dist. Thence between sec. 1 & 2 (41' westerly variation from the original line) 165 poles crossing a prairie, and deep pond to the original gr. sec. corner, a white oak now 14 in. diam. S 85° E 10 links dist. (The other tree called for in the original field notes is down). Thence south 189 poles to a white oak 12 inches in diam S 66° E 10 links dist. Thence west (41' variation westerly allowed) 165 poles to a stake in the west line of the sec. in Alex. Dokes orchard. Thence north 159 poles to the beginning containing 165 1/4 acrs. Then made a division line, beginning at a stake in the west line 77 1/2 poles south of the beginning. Thence east (allowing 41' variation) 165 poles to a white oak 18 in diam S 41° E 25 links dist dividing the gr. into two equal parts of 81 3/4 acrs each



George Gray } Clk.  
 Andrew Gray }  
 G. Gray master J. W. Marmore G. S. L. C.

11<sup>th</sup> mo. 3<sup>rd</sup> 1828

Survey No. 112

8227

Surveyed 60 acres of land for Thomas Stanfield, agent of Samuel Hought - Beginning <sup>in the north line of</sup> at the north east corner of William Miller's survey no 3226, 2 sugar trees, and a blue ash (The sugar trees being down and some decayed & marked 2 sugar trees and ash in their stead) - Thence with the north line of said survey S 80° W 80 poles,

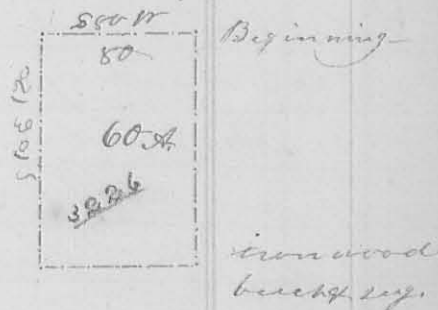
crossing the road to Sandusky at 12 poles) to a lynn beech and buckeye - Thence S 10° E 120 poles

to an ironwood, walnut, beech, and lynn. - Thence 80° E (crossing the road at 60 poles), 80 poles to an ironwood, beech and sugar tree in the east line of the <sup>own</sup> origin of said survey. Thence

with said line S 10° W 120 poles to the beginning containing 60 acres in the S.E. corner of said survey.

Nichodemus Naumann } 66 - for W. Harmon Esq. L. C.  
John McChesne

Some years after making this survey I discovered that I did not begin at the N.E. corner of Miller's survey as I thought.



Dec 12<sup>th</sup> mo. 18<sup>th</sup> 1828

Survey No. 113

8228

Surveyed 240 acres for Raphael Moore - Beginning at the N.W. corner of sec. 24 Town. 4 R. 13 N.R. a stake in a prairie -

Thence east (allowing for westerly variation from the origin - at time) 240 poles (passing the gr. sec. corner at 16 poles

at a road, a white oak beech <sup>begin</sup> - east

S 23° W 50 links - a white oak

S 53° E 19 links, to a stone a

bur oak S 67° E 70 links and

a cherry tree, S 69° W 47 links -

Thence S 89° E 162 poles crossing

ing a road to a stone set

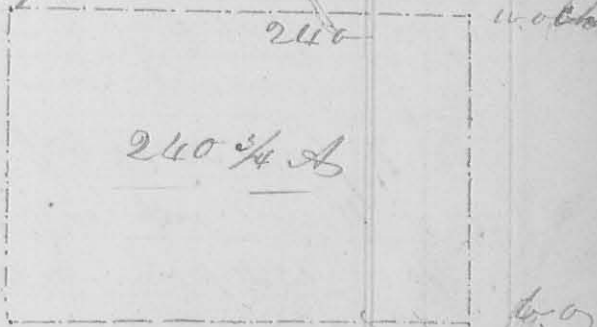
in a prairie, a bur oak beech

S 67° E 70 links dist. - Thence west (allowing for westerly variation)

(crossing a branch at 22 poles, one at 43 poles) 236 poles to the

west line of the section, a black oak S 72° W 13 links

a black oak north 23 links - Thence north with



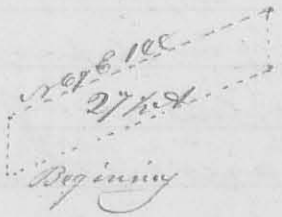
said line 162 poles to the beginning containing 246 3/4 acs, the whole of the N.W. q. and the west half of the N.E. q. of sec. 24 & D.

Robert Moore }  
Samuel Moore } C. S. L. C. *W. M. Marmen*  
R. Moore master

8729 3<sup>rd</sup> Mo. (March) 23<sup>rd</sup> 1829

Survey No. 114

Surveyed 27 1/2 acs for Benjamin Watkins - Beginning at an elm and small red oak in the north line of Thomas Parker's survey No. 4497 13 poles N 67° E from Belms, corner to Parker's survey - Thence north 30 poles to 2 dogwoods Thence N 67° E (cropping a road at 118 poles) 148 poles to a Sugar tree - Thence S 30 poles to 2 Sugar trees & hickory in Parker's line - Thence with his line (S 67° W) (cropping a road at 30 poles) 148 poles to the beginning containing 27 1/2 acs part of James M. Vult's survey No. 4195 & 4604 -



Robert Watkins }  
Richard Robins } C. S. L. C. *W. M. Marmen*  
Robert Marmen master

3<sup>rd</sup> Mo. 24<sup>th</sup> 1829

8230

Survey No. 115

Surveyed for George Moots Sr. 25 acs Beginning at white oak and black oak in the south line of Samuel Finley's Survey No. 4495 & 4525 on Mad River 74 poles N 70° E from the south west corner of said survey Thence with said line N 70° E 25 1/4 poles (cropping a road at 154 poles) to a black oak and white oak - Thence N 20° W 76 poles to a bar oak and white oak - Thence S 70° W 122 poles to a white oak oak on the south side of a road - Thence N 20° W (cropping Mad River at 112 poles) 160 poles to a stake in a prairie - Thence S 70° W 131 1/7 poles to a stake in the prairie



90<sup>th</sup> Thence S 17° E (cropping  
 a mill-pond at 60 poles)  
 233 poles to the begin-  
 -ning containing 250  
 acres, part of Samuel  
 Hinley's said survey -

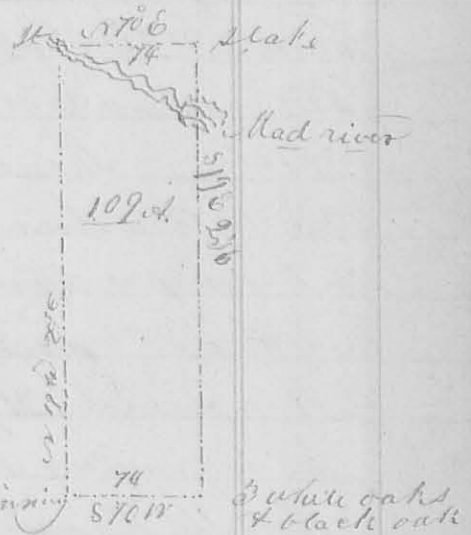


P. Kelly }  
 Geo. Moots } Lt. Col.

J. W. Harmon Lt. Col. S. G.

3<sup>rd</sup> Mo. (March) 24<sup>th</sup> 1829. (Survey No. 110) (8233)

Surveyed 109 acres for George Moots Sr.  
 Beginning at a black oak and white in Ludlow's line, at  
 the S.E. corner of Sec. 16 Town 5 Range 13 M.P.S. and South  
 west corner of Samuel Hinley's survey are 4493 & 4525 on  
 Mad River. Thence with Ludlow's  
 line N 17° W 236 poles to the north bank  
 of Mad river thence N 70° E 74 poles  
 to a stake - thence S 17° E (cropping  
 a mill pond at 60 poles) 236 poles  
 to 3 white oaks & black oak in the  
 South line of the original survey  
 Thence with said line S 20° W 74  
 poles to the beginning contain-  
 -ing 109 acres in the S.W. corner  
 of Hinley's said survey.



Peter Kelly }  
 Geo. Moots } Lt. Col.

J. W. Harmon Lt. Col. S. G.

4<sup>th</sup> Mo. (April) 20<sup>th</sup> 1829. (8231) (Survey No. 111)  
 Surveyed 110 acres of land for Thomas Dundon Beginning  
 at a stake in McCoy's east line, & in the west line of John  
 Scott's survey 3441 on the east side of a small branch  
 thence with said line N 72° W (cropping a branch twice in  
 4 poles distance) 123 poles to a stone corner to William  
 Reams's land thence N 80° E (cropping 2 branches, 131.2

The original of this page is blank or missing.

The original of this page is blank or missing.



The original of this page is blank or missing.

The original of this page is blank or missing.

The original of this page is blank or missing.



The original of this page is blank or missing.

The original of this page is blank or missing.

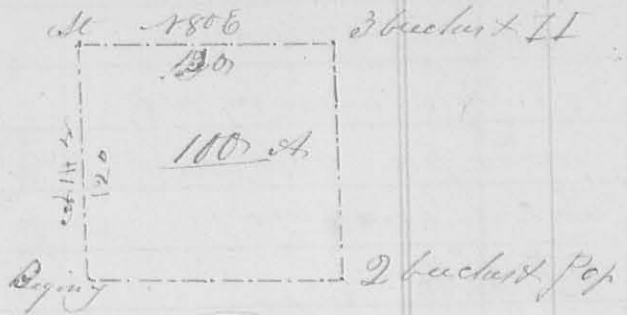
The original of this page is blank or missing.

The original of this page is blank or missing.



100

poles to Beeches and hickory in Reams south line  
 thence 14 1/2 C 120 poles to 2  
 beeches and poplar Stephen  
 Leas's north line - thence  
 150 1/2 W crossing a branch  
 130 2 poles to the beginning  
 containing 100 acres of John  
 Scott's said survey  
 John Moore }  
 Stephen Leas }



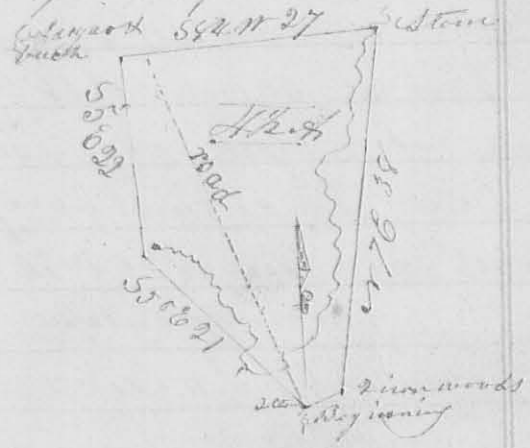
J. M. Harrison  
 C. S. L. G.

8222

4th Mo. April, 21st 1829

Survey No 118

Surveyed 1/2 acres of land for the Society of Friends  
 Beginning at a stone in the road from Goshen Meeting  
 house to the head of Kings-creek, at a sugar tree and poplar  
 corner between William Green and John Parson - thence  
 26 1/2 C 4 poles to 2 small iron woods in Green's north line  
 thence 27 C 38 poles to a stone in a small branch - thence  
 18 1/2 W crossing said road at 24 poles, 27 poles to a beech and  
 sugar tree - thence 15 C  
 22 poles to a stone near  
 the head of a spring  
 thence 150 E crossing  
 the spring branch, 21 poles  
 to the beginning a part  
 of Holland Harp's survey  
 10 37 23



Stam Hiatt }  
 Jacob Popson }

J. M. Harrison  
 C. S. L. G.

8233

6th Mo. July, 29th 1829

Survey No 119

Surveyed 6 1/2 acres of land for Redwood Easton  
 Beginning at a sugar tree, cypress, elm, and walnut stump  
 southeast corner of Alexander Dandridge's survey No 220  
 thence with the east line of said survey north, cross-  
 ing a branch at 74 poles, 78 poles, to 2 beeches elm, thence  
 west, crossing a branch at 8 poles, one at 14, one at 136