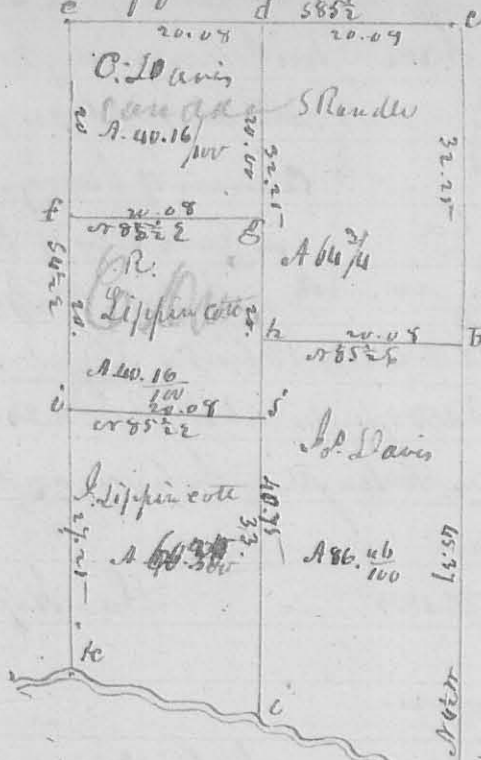


N^o 242

Sub. division of tract S. 23. T. 1. R. 8 E
5855

201.

(8326)



In the survey of this half of the tract. of the course and distance of the lines are marked on the plat. the Description of the corners, is as follows, beginning at
 a. original Sect. corner.
 B. N. 63 1/2 W 57 3/4 links, N. 0. 24 S 39 E 23 links - c Sect. corner.
 D. Hickory 24 1/2 S 40 E 10 links, and
 land 6. N 65 W 25 E. orig. corner
 E. Beech 10. W 71 W 18 links, and
 land 10. S 62 E 42 do.

at g. N. 0. 18 W S 42 E 13. & Beech 12 W
 and White oak 20. N 38 E 35 links. i R. O. 12 W S 73 W as Beech 18 S 85 E 42.
 i. Dogwood 3 W S 42 W 16 E. Gray alth 22 W N 11 W 34 links. k Stone - corner
 O. Jukka Mulberry 20 W S 86 E 18 E Elm 48. W N 86 W 12 links.

N. vs.

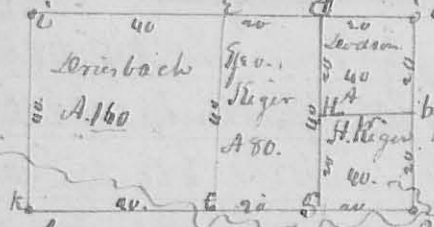
R. Lippincott
 G. Davis ch. carrier
 June 5th 1834

L. Hopkins Deputy Sur. S. C.

N^o 243

N^o 528 S 75 R 8 E Lewis town Reser.

(8327)



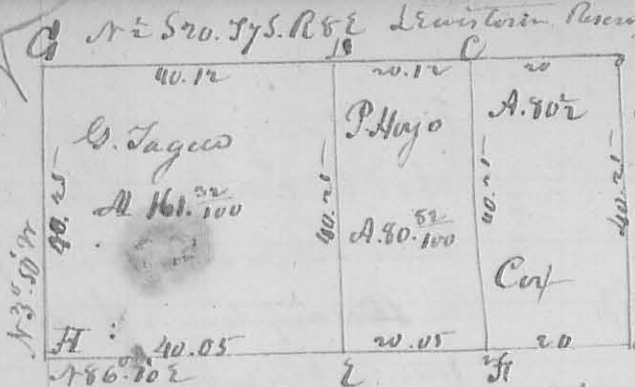
this plat represents the sub. divi-
 sion of tract N^o 528 S 75 R 8 E Lewis town
 Reservation, the lines run as follows
 N 3° 50' W, and at right angles

then with the description of the corners is as follows. a q. c. corner on east
 line of the section. b Hickory 8 W N 65 E 15 links. Ironwood 3 W S 30 W
 33 3/4 links. c Sect. corner. d Beech 8 W N 85 E 38 links. alth 24 W
 148 W 25 links e q. c. corner. f q. c. corner. on sub. division line back 24
 W S 30 E 32 Ironwood 3 W N 63 W 39 links. g. Beech 18 W N 4 W 12 links
 N. O. 3 1/2 W S 20 W 18 links. H. Sugar 22 W. corner tra

P. Hoys
 J. Dillen } ch. carrier
 June 16. 1834

L. Hopkins deputy Sur. S. C.

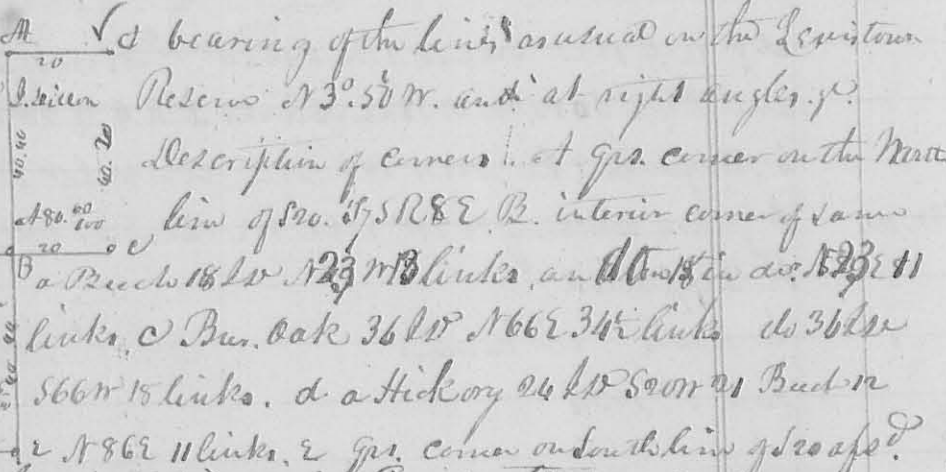
202
 N^o 244
 (8328)



The lines of this survey bear from south running north thus: N 33° 50' W and at right angles 186° 10' W. y. Corners of survey, at a gr. corner on East line of feet B. N. 6 corner of the feet. C Bur. oak 10 l^o 56 l^o 24 links Lynn 10 l^o 188 l^o 13 links. 2 l^o gr. corner. E Hickory 2 185 l^o 3 l^o 1 links Beach 10 l^o 140 l^o 7 links, at a Bur. oak 20 l^o 130 l^o 23 links and Beach 18 l^o 57 l^o 26 links. The lengths of the lines, and quantity of acc. marked on the lines, and tot.

H. Kiger Gen. Drierbach ch. man. June 17th 1834
 L. Hopkins depy. Sur.

N^o 245. Represents part of
 S 17. 620 to wit. 9 l^o N E gr. 500 y
 E to S. W. of same and north p. of
 S 17. 77 S R 7 E. & R 8 E.



description of corners: at gr. corner on the North line of S 17. 77 S R 8 E B. interior corner of same a Bur. oak 18 l^o 123 l^o 18 links, and a Bur. oak 11 links. C Bur. oak 36 l^o 166 l^o 3 l^o 1 links do 36 l^o 56 l^o 15 links. d a Hickory 24 l^o 50 l^o 21 links. e a Bur. oak 11 links, 2 gr. corner on South line of scope? 3 l^o 3 l^o 3 l^o diameter corner tree. A Bur. oak 10 l^o 108 l^o 26 links. B a Bur. oak 11 l^o 115 l^o 38 links at a Bur. oak 10 l^o 149 l^o 6 links, below 3 l^o 589 l^o 8 links, at a Bur. oak 22 l^o 512 l^o 184 links. Ash 30 l^o 112 l^o 15 links. K. Ash 18 l^o 522 l^o 32. Same 6 l^o 133 l^o 41 links Surveyed June 17th 1834

H. Kiger Gen. Drierbach ch. carrier
 L. Hopkins depy. Sur.

N^o 246
 E to S E gr. and
 W to S W gr. of
 S 32 l^o 33 l^o S
 R 7 E.



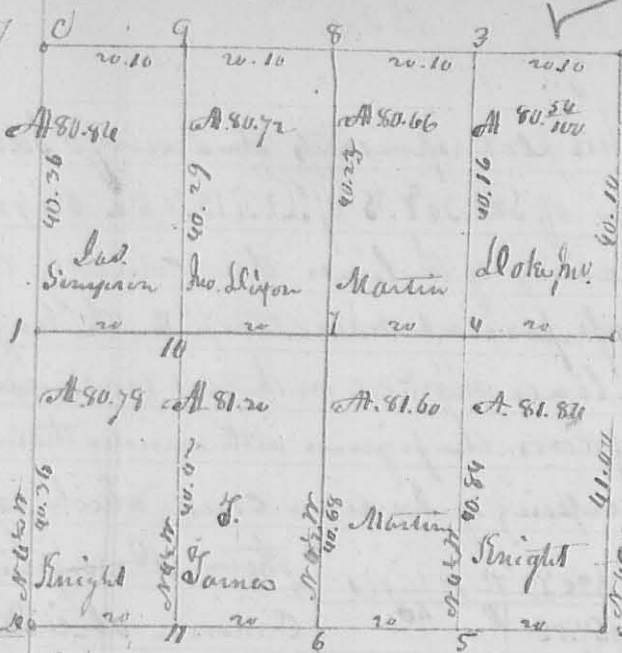
this plot represents a survey on Leicester Reservoir. Corner as usual, the distance is marked on the lines of the plot. Corners as follows: a Bur. oak 12 l^o 188 l^o 12. Bur. oak 12 l^o 52 l^o 19 links b Lynn 22 l^o 112 l^o 34 links. Beach 20. S 11 l^o 43 links. c. Hickory 24 - 150 15 20 15 l^o 565 l^o 22. 2 l^o gr. corner between S 32 l^o 33 l^o E. Beach 15 l^o 592 l^o 31 links do 16 l^o 62 l^o 40 links. A H. ash 6 l^o 162 l^o 11. Beach 22. 562 l^o 25 links -

A. Gardner W. Fisher ch. man
 June 24. 1834
 L. Hopkins depy. Sur.

N^o 247

S
16
R 82

9329



13 this plat represents the survey 2023 and sub. division of 16.51 R 82. The course & distance as marked, running at right angles, except onto the East line. (See the notes marked on the line) the corners are as follow: A. A. lot corners, planted a stem figure B. 1st corner. B. lot corner. C. 1st corner at figure 1. Beech 18 l^{ts} 500 E 11 links, do 6 l^{ts} 133 W 36 links at figure 2. 1st corner. 11 links at figure 3 is a beech 16 l^{ts} 55 W 7 links, do 20 l^{ts} 135 E 31 links at 8 Beech 18 l^{ts} 146 W 24, do 12 l^{ts} 195 E 23 links, at 9 is Beech 12 l^{ts} 515 E 82 links, do Oak 6 l^{ts} 133 W 22 links, at 10 is a Cherry 12 l^{ts} 142 W 15 links, White Oak 6 l^{ts} 518 E 12, at 11 Poplar 12 l^{ts} 14 links distant Hickory 22 l^{ts} 358 E 34, at 6 is the original 1st corner on the South line of the section, at 7 is a Gray ash 10 l^{ts} 157 W 25 links, and haw 6 l^{ts} 539 E 39 links, at 4 is a Sugar 15 E 56 W 7 links do gum 4 l^{ts} 133 W 7 links, at 5 is an Ash 3 l^{ts} 57 W 11, do yew 3 l^{ts} 167 W 12 links

at figure 3 is a beech 16 l^{ts} 55 W 7 links, do 20 l^{ts} 135 E 31 links at 8 Beech 18 l^{ts} 146 W 24, do 12 l^{ts} 195 E 23 links, at 9 is Beech 12 l^{ts} 515 E 82 links, do Oak 6 l^{ts} 133 W 22 links, at 10 is a Cherry 12 l^{ts} 142 W 15 links, White Oak 6 l^{ts} 518 E 12, at 11 Poplar 12 l^{ts} 14 links distant Hickory 22 l^{ts} 358 E 34, at 6 is the original 1st corner on the South line of the section, at 7 is a Gray ash 10 l^{ts} 157 W 25 links, and haw 6 l^{ts} 539 E 39 links, at 4 is a Sugar 15 E 56 W 7 links do gum 4 l^{ts} 133 W 7 links, at 5 is an Ash 3 l^{ts} 57 W 11, do yew 3 l^{ts} 167 W 12 links

John Simpson & Martin y
Thos James. ch. men.
June 1834

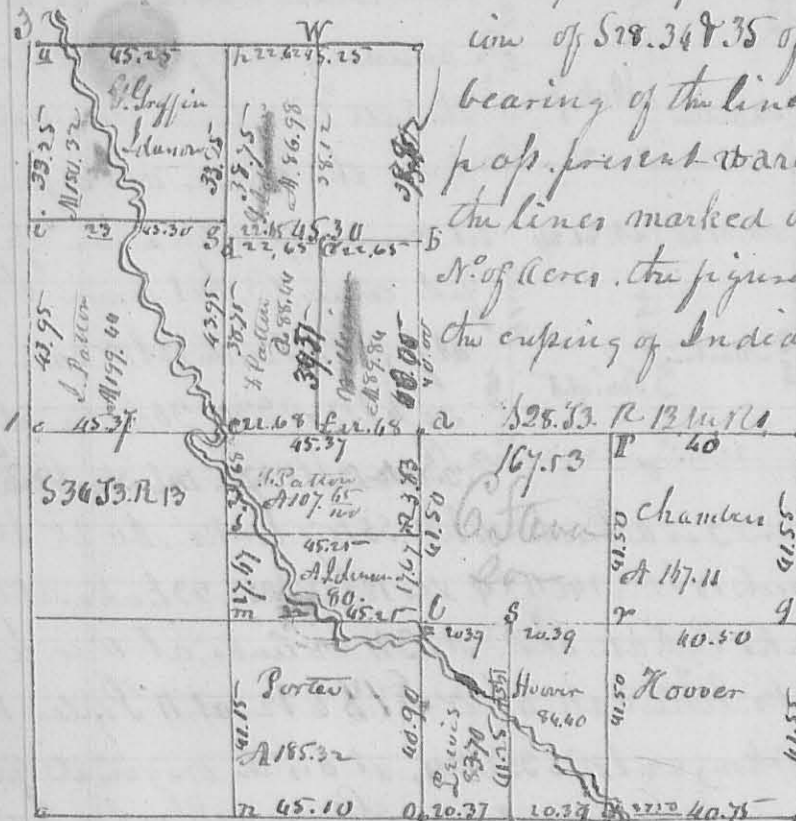
D Hopkins depy. Surveyor

N^o 248

S35 T. 3. R. 13. W. 1/4

This plat represents the Survey & Sub. division of S18. 34 & 35 of T. 3. R. 13. W. 1/4. Original bearing of the lines due course by the compass present variation 1/2° E. the length of the lines marked on the plat together with the N. of Acres. the figures with - under them show the cupping of Indian Creek which passes through them. Description of

8330



them. Description of
 Corners. at C Back 200
 North 4 links. au do 8
 57 W 28 links. at G Gray ash
 30 S 20 N 30 E 18 links bounded
 A D S 40 W 8 links. & Beech 18
 S D N 14 W 17 links do 18
 v S 10 E 26 1/2 links. at C

Lynn 20 S D 57 S W 33 links Sugar 15 S D 57 E 45. at F Beech 18 S D 53 W 4
 and same 15 S D N 48 W 5 links. B orig. qd. corner. a S. E. corner of section
 figures 1 & 3. Sect corners. at E. Beech 10 S D S 6 E 18. same. C 1/2 W N 10 E
 55 links W Beech 18 S D S 9 W 42 links. Beech 8 S D N 18 W 16 1/2 links.
 at C Beech 10 S D 123 E 25 same 12 S D N 15 W 23 links. at I Beech N 47 E 13
 Elm S D 142 W 19 links. at K Beech 18 S D Corner tree & Original qd.
 Post. m Beech 18 S D 180 E 5 links. and same 8 S D S 34 W 25 links. n Hoop
 ash S D N 11 W 11 S. and same 12 S D 103 E 37 S. O. S. E. corner of S 34 P. Beech
 12 S D N 22 E 9 1/2. same 8 S D 138 W 7. B of Elm S D 135 W 32. same 4 S D 136 E
 91 S. n. Beech S D N 47 W 10 1/2 links same 10 S D S 6 W 25 links at S Maple
 24 S D N 30 E 10 S. and Ash 30 S D S 45 W 31 S. t Gray ash 20 S D S 82 E 8 1/2 links
 Water Beech 4 S D N 82 W 12 1/2 links. a qd. corner on south line of S 25. v.
 S. E. corner of same section

Oct. 1834

David Hopkins Land Surveyor

N^o 249

Oct. 1834 Surveyed for William John Lewis town Resins. part of
 S36. T. 6. S. R. 8. 2 beginning on the north line of said lot at the qd.
 Post. thence S 3. 50 E 40. 37 to a R. Oak S D S 45 W 26 links. and Hickory
 18 S D N 11 E 33. thence N 86. 10 E 32. 50 to Hickory 12 S D N 43 E 18 S
 Forked Elm S D S 31 W 35. on Robert Line thence N 26 W to the section
 corner. thence S 86. 10 W 18 ch. to the beginning. Acreage. 101. 93

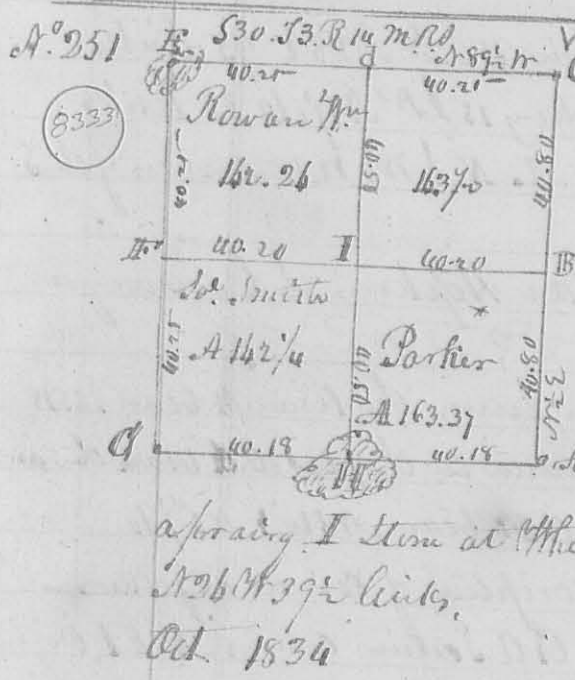
8331

Oct. 1835

Divided the adjacent lot as follows. Beginning N 35° 50' W 17.70 from the N.W. corner thereof at a Hickory 10 W 186 W 33 links, Water Beech 5 L W N 32 E 33. then N 86° 10' E 26 chains to a Beech 24 L W N 75 E 2 1/2 links and Beech 18 L W N 81 W 28

San Hopkins, L. Sawyer or

N^o 250 Surveyed Oct 1835 the South portion of the N.E. q^r. of tract l. 18. 575 R 9 E. Beginning at Trains S. E. corner, then N 35° 50' W 20.25 to W. Oak 18 L W N 45 W 27 links, and same 18 L W S 59 E 49 links, then N 86° 10' E 32 chains to a Sugar 15 L W S 79 E 13 B. Hickory, 12 L W N 37 W 94 L. then S 94 E 21.50 to an Oak 12 L W N 84 E 27 links, W. Oak 12 L W S 54 E 4 L. then S 86° 10' W 39.50 to the beginning. Containing 72 1/2 acres
 Oct. 1834
 San Hopkins, Sawyer or L.



The lines of this survey run at 4° E from the original course, which was due north - distance as marked on the lines. Description of corners. B. E. A. Beginning of this survey. S. E. corner of the section B. Bur. Oak 18 L. W. N 37 W 125 L. and same 20 N 18 E 130 L. C. Sect. corner. d. Bur. Oak 12 L W N 73 E 89 Hickory 10 S 73 W 16 Links. E. Stake in a prairie - F. orig. q^r. corner. G. Sect. corner. H. Stem in a prairie. I. Stem at White Oak 10 L W S 72 W 80 Links. Bur. Oak 12 L W N 26 W 39 1/2 links.

San Hopkins, Sawyer or L.

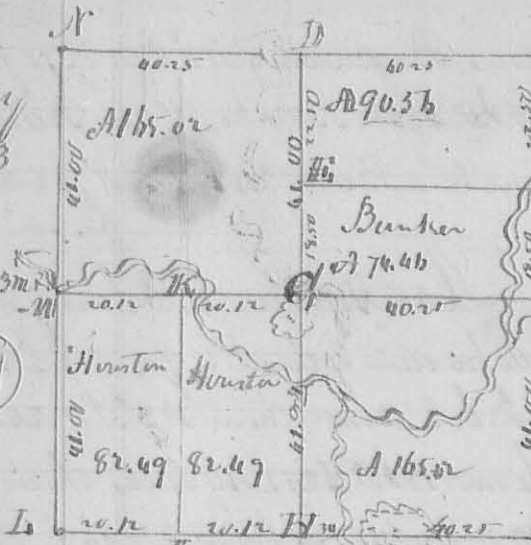
N^o 252 For Prichard & Bunker. Exchange of lands. Surveyed for Prichard, deeded to Bunker. Beginning at a stake in the line between the S. E. & N. E. q^rs. of S. 23. R 12 M. N. then S 89 W 20 chains to a White Oak 22 L W N 57 W 85 L. and same 12 L W S 8 E 92 L. then S 82 E 14.77 to the creek area then with the meanders of and up the creek to the beginning. Containing 8.75 acres. Then for Bunker, deeded to Prichard beginning at the S.W. corner of the N. E. q^r. of said tract in then N 75 E 7.50 to a stem then N 89 E 9 chains to the road, then S 4 E 4.75 chains. S 82 E 5.59 ch. to White Oak 22 L W N 57 W 85 L. do. 12 L W S 8 E 92 links in the line between the N. E. & S. E. q^rs. then S 89 W 15 chains to the beginning. 8.75 acres
 Oct. 1834

San Hopkins, Sawyer or L.

Survey
N^o 253

S. 13 R. 13 m. 1/2

8337



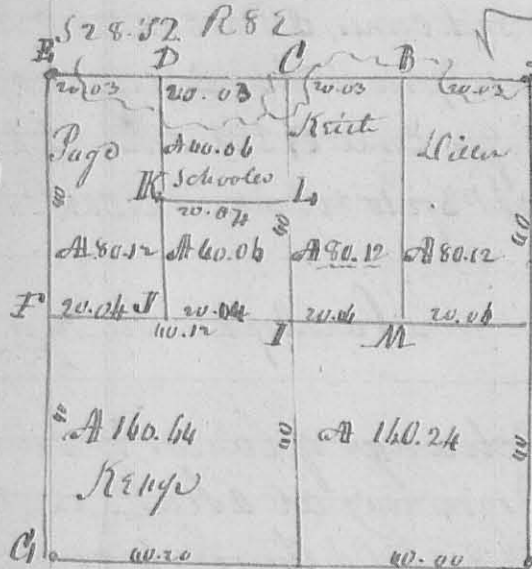
This plat represents the Survey & Sub. div
 ion of S. 13. R. 13. M. 1/2. bearing of the line
 of due course with variation 30' N. for the
 length of the lines, and contents of the lots
 as the plat. Description of corners -
 A. S. E. corner of the S. 13. R. 13. M. 1/2 N 68 W 30
 White Oak 16 1/2 N 33 E 20 links
 B. B. Oak 20 1/2 Ball 24 1/2 links and
 A White Oak 18 1/2 S 63 W 30 L.

C. W. Oak 16 1/2 S 41 E 16. and White oak 12 1/2 N 81 W 32 links
 D. Hickory 4 1/2 N 35 E 37 1/2 links, R. Oak 26 1/2 N 31 W 73 ditto
 E. B. Oak 8 1/2 N 34 W 21 links, Hickory 8 1/2 S 89 E 19 links
 F. Stake near a branch.
 G. Bur. Oak 15 1/2 N 30 E 109 links, same 15 1/2 N 28 E 93 links
 H. B. Oak 12 1/2 N 48 E 50 links, Hickory 15 1/2 N 71 W 33 links
 I. W. K. Stake. M. Stake in a prairie. L. N. S. M. N. W. corner of the
 Oct. 1834

San Hoptim, L. C. Surveyor

N^o 254

8338



In this Survey the line A. bears N 85 W
 for distance to the plat. O. C. bears the same
 O. A & C. E. bear N 3 W & N 5 1/2 W.

Description of corners as follows -
 A. E. C. O. Section corner, N. H. Origin
 of gr. Parts.
 B. Lyrum 18 1/2 N 87 1/2 W 39 Buck eye 3
 W 18 1/2 E 30 1/2 L. M. Buck 10 1/2 S 89 W
 36 links, Elm 6 1/2 N 50 E 19 links
 I. Beech 18 1/2 N 22 E 10 L. Beech 18 1/2 S 12 W 30 Links C. Elm N 85 E 14
 Links, Gray Ash 8 1/2 N 44 W 18 Links, K. Hickory 18 1/2 W 55 E 14
 Beech 3 1/2 N 12 W 20 links, L. Buck 18 1/2 N 33 W 3 Links and
 Buck 12 1/2 W 54 E 25 links, D. Buck 12 1/2 N 33 W 12 1/2 Buck 10 S 89 E
 26 Links, F. Buck 22 1/2 N 33 W 47 Links, Beech 18 1/2 S 61 E 37 Links, J. Stake
 in the line W. F. with 6 Links 185 W from I.

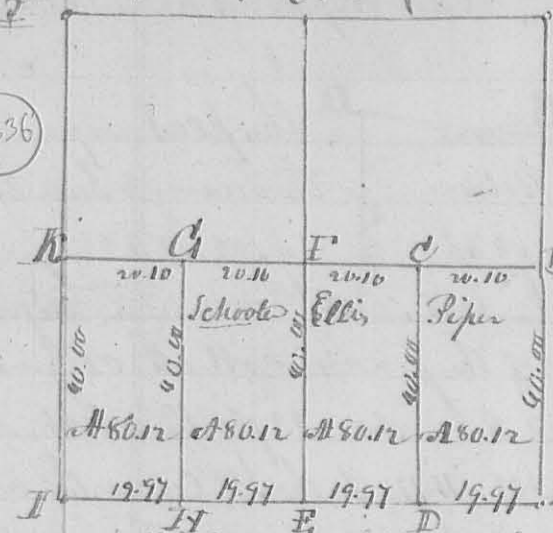
Oct. 21. 1834

L. Hoptim Surveyor L. C.

N^o 235

Oct. 1835
S 85° 57' R 82

336



The lines of the survey, bear as follows -
 the lines running North, bear N 4 W. and
 those running West bear S 85 1/2 W. length of
 the lines, as marked on the plat, for the con-
 tents see also the plat. - 1

Description of corners -

A. S E corner of the section. B. Original
 bearing trees. at Gr. Corner; at C Back
 10 L D S 85 E 22 Links, and Back 8 L D N 5 W
 22 Links, at letter D. Back 8 L D. Corner tree. at E. Back 29 L D N 32 W
 24 Links. Red Oak 18 L D S 33 W 38 Links. F. Gum 18 L D N 3 W 9 Links, Iron
 wood 6 L D S 31 W 31 Links, at G. Ash 18 L D S 85 1/2 W 26 Links. Back 10 L D
 S 31 E 34 Links, at H. Back 15 L D N 4 W 18 Links, E. Elm 18 L D S 32 E 31 Links
 K. an Elm 48 L D N 7 E 22. an Elm 22 L D S 39 E 31 H S W corner of the
 section.

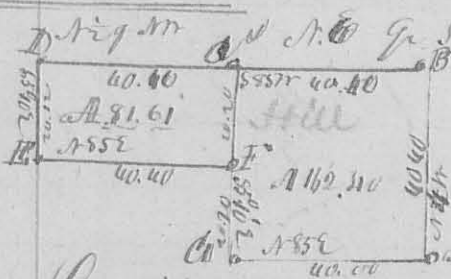
Oct: 23rd 1835

San Hopkins Survey & Co

N^o 256 Surveyed Oct: 24th 1834 for old Mr. Ashbrook, the North half of
 the West half of 1/4 Gr. of S 2 R 82 Beginning at the NW corner in
 center of the west boundary at a sugar 6 L D from 19 L D Back 15 L D
 N 74 E 57 links, thence S 85 E 20 chains, 66 links to a Back 10 L D S 85 E
 26. and Back 18 L D S 33 W 16 L D. thence N 6 E 19 ch 88 Links to a Hickory
 12 L D N 79 E 12 links, Red Oak 20 L D N 65 W 22 links thence S 85 W 20
 ch. 6 links to a Bar oak 20 L D N 27 E 13 links. Ash 15 L D N 79 E 13 links
 thence N 4 W 19 ch. 88 links to the beginning containing 39 3/10
 acres

San Hopkins, S. C. Surveyors

N^o 257



This plat represents the survey of 1/2 of 1/4 Gr. of
 S 4 R 82, and 1/2 Gr. of 1/4 section for John
 Hill for corner & distance, see the plat

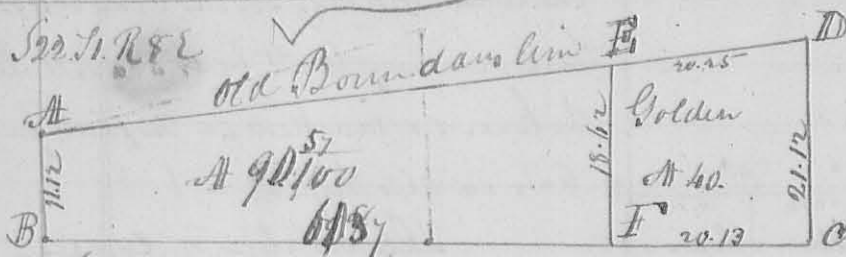
Description of corners A. orig. gr. corner on the East-line of the section
 a Back 5 L D S 85 W 25 Links, Water Back 6 L D N 4 E 6. C. no corner
 made B. Sect corner Back 17 L D N 89 W 10. D and Swamp ash 18 L D
 N 79 E 26. D Back 12 L D N 47 W 32. H. Oak 10 L D N 35 E 16 Links. H. Ash 15
 L D N 20 W 29 links, Sugar 16 L D S 80 W 30 links. F. Gum 15 L D S 83 W 22. Back 15 L D
 S 33 W 4 L

Over

208 Ct. Blue Ash to 6th NW 1/4 35. Map to 10th NW 1/4 25 links -
 Benj^r Ellis, George Hill ch. men Dan Hopkins Sur. D. C.
 Nov. 20. 1835

N^o 258. 522. 1/2 R & E

(8337)



This plot represents the Survey & Sub. division of 522. 1/2 R & E. for Edward Timmons, as follows.

Beginning at the NW corner of the section. At old original corner down marked Ironwood 4 ch. ds. N 75° 13' E links, and Elm 30 P 81° E 9 links, then S 42° 11' E to the SW corner, the bearing tree down, then N 85° 3/4° E 81.00 to Red corner, bearing tree, then down, then N 41° 21' 12 to Back of 10th corner tree, as the boundary line, then with said line by 8th N to beginning, containing 130.37 acres. Then cut off from east end of the foregoing survey, 40 acres for Golden. Begin at F. S 85° 3/4° W 20 ch. 12 links, from NE corner the section at a Back 10th N 68° E 28 links, 4 White Oaks 6th NW 18th W 27 links, then N 41° 18.62 ch. to an Elm 24th NW 43 links, Swamp ash 20th SW 64 links, on the old boundary line -

Nov. 21. 1835

Dan Hopkins, D. C. Surveyor

N^o 259

(8338)

Surveyed Dec. 10th 1834 for Mrs Rogan, the west half of the NW 1/4 of 15th 1/2 S. of R & E. Lewis & Resend Beginning at the original post on the west line of the section, then N 86° 10' E 20 ch. 12 links, to Back 15th NW 17th E 9 links, and a Beech 17th NW 47 E 44 links, then S 35° E 40²⁵ links, crossing the creek at 29 ch to Gray Ash 8th NW 22 links, Beech Eye 4th NW 133 E 12 links, then S 86° 10' W 20 ch. 12 links to the SW corner of the section, then N 32° 50' W 40 ch. 25 links, to the beginning (an Ironwood 10th NW 133 W 3 links, Red Elm 6th NW 158 E 22 links) containing 81. 3/4 acres.

H. Hopkins }
 and Rogan } ch. men

Dan Hopkins, D. C. Surveyor

N^o 260

(8141)

Surveyed Dec. 12th 1834 for Bowyer & Sigell part of line of 079950 Beginning at 2 White Oaks & Ash, N. E. corner to land surveyed by Mr Bowyer to John Harrod then N 12° W 22 poles, to 2 W. O. Sugar & Logwood, then N 78° E 42 1/2 poles, to 3 White O., then N 12° W 86 1/2 poles, to 2 White Oaks, then S 78° W 162 1/2 poles, crossing a Big road at 12. & branch at 126 poles, to a stake in a prairie in the west

line of the original block, then with said line N 82 E 108 5/8 poles to
to a stake in a prairie, then N 78 E 120 poles, crossing the Big road at
20 poles, to the beginning, containing 104 1/100 acres, same day.

Surveyed for John Hamrod part of the same or
original survey, as follows. Beginning at 2 white oaks, begun ^{beginning} ^{line of}
the foregoing corner, then N 78 E 118 poles, to a stake, corner to John Hamrod
then N 2 E 80 7/8 poles to a Hackberry, ash & hornwood in the south line of
the original survey, then N 78 W 118 poles, to 2 white oaks, then N 10 W 80
poles, to the beginning, containing 59 7/100 acres.

Boyer & Seize ch. corners

San Hopkins & C. Surveyor

N^o 261 Dec. 18. 1824 Surveyed for John Hamrod original survey N^o 3195, as
follows. Beginning at 2 Bur Oaks on Ludlow line, NW corner to said
Survey, then N 87 E 296 poles, crossing Detroit Road at 53 poles, & Saw-
dusky road at 116 poles, to stone, original call, 2 Lynns & White Callnut
all down, then East 75 poles, crossing a branch at 58. 60. & 62 poles, to
two white oaks, one down, stone planted, then N 82 W 112 7/8 poles, crossing
small branch at 14 poles, to Red Oak, Sugar & Hickory, then N 80 W
298 poles, crossing Sandusky road at 92 poles, & Detroit Road at 27 poles,
to a stake, then N 10 W 42 poles, crossing a branch at 72 poles, and at 160. 164
370. 376. 390 & 402 poles, to White Oak & Red Oak, then S 80 W 149 poles, crossing
branch at 32 poles, to 2 small Hickories, White Oak & Black Oak in line
lower line, then with said line N 20 E 48 9/16 poles, crossing a branch at
332 poles, Spring run at 348 poles, & 424 poles, to the beginning -

Joseph Clark

D. W. Stevens ch. corners

San Hopkins Surveyor & C.

At same time Surveyed off the east end of the foregoing survey, the
following lot for J. Kirkpatrick Beginning at two white oaks
SE corner to N^o 3195, then N 10 W 112 7/8 poles, to Red Oak, Sugar &
Hickory, then N 80 W 93 poles, to the portland road, then with said
Road N 34 W 72 poles, to a small Hickory, then N 87 E 17 poles, to a Gray
Ash, then South 38 poles, to a small Hickory, from East 17 poles
from a forked Sugar, then N 87 E 61 poles, to two hickory, white oak,
nut, all down, then, corner to J. Hamrod, then with his North
line East 75 poles, to the beginning, containing 90 acres, and

Also. Beginning at Red O. Sugar & Hickory, named above, then N 80 W 93 poles,
to the Sandusky road, then N 33 E 25 6/16 poles, then N 80 E 75 5/8 poles, to two
oaks & Red Oak, then N 10 E 17 1/2 poles, to the beginning, Cont. 7. 10 acres.

date & ch. men as above.

San Hopkins S. L. C.

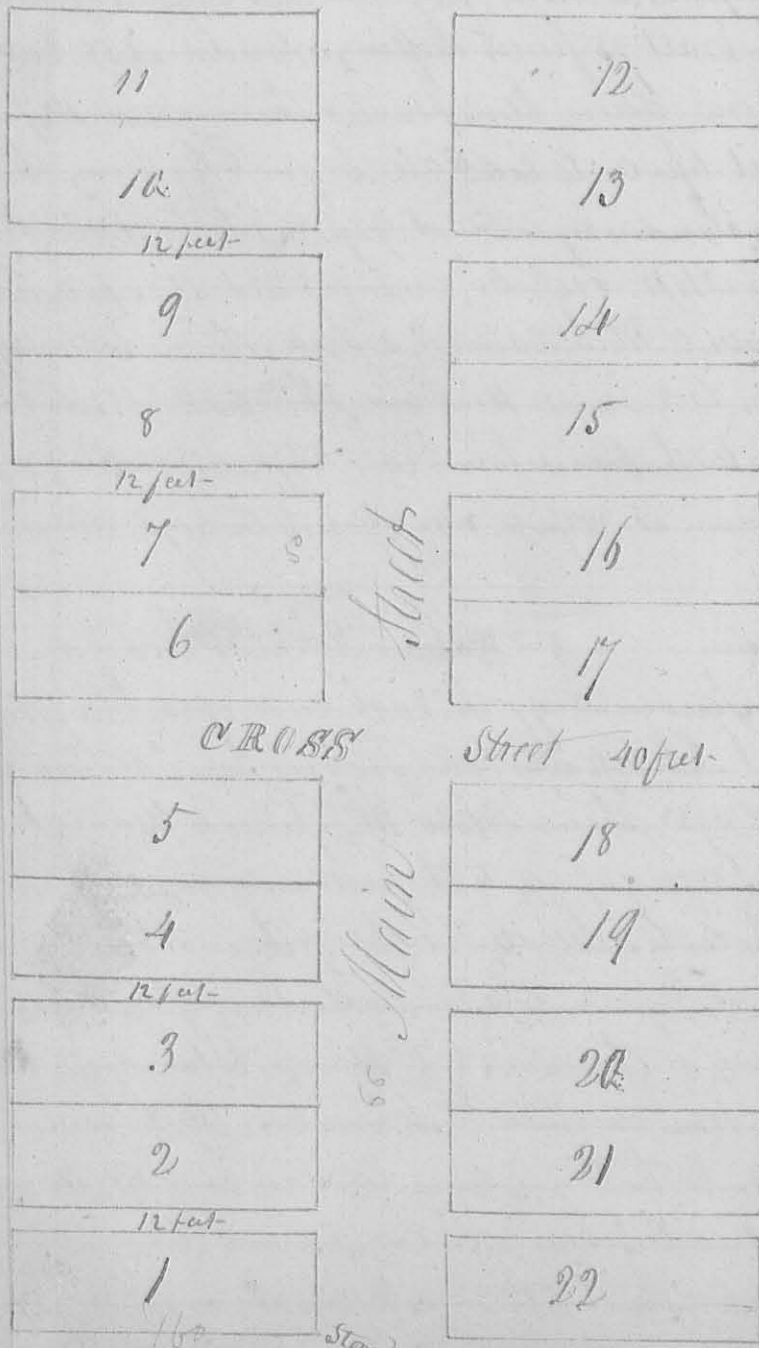
Decr

1834

Surveyed Decr. 1834 for Henry Royer 20 acres of land part of the West half of the S.E. q. of S34 T53 R14 W2D as follows. Beginning at Hickory 8 1/2 D S38 E 14 links and Hickory 5 1/2 D N31 W 31 links. SW corner of the East half of said q. feet on. thence N 89 1/2 W 4 ch. 88 links to Gray Ash 14 1/2 D N 86 W 65 links and same 15 1/2 D S 86 E 48 links, thence N 7 1/2 E 41 chains to White Oak 12 1/2 D S 10 31 links and same 24 1/2 D N 82 E 41 links thence S 89 1/2 E 4 ch. 88 links to a White Oak 30 1/2 D S 49 1/2 W 11 links, thence 15 1/2 D N 49 1/2 E 18 links thence S 1/4 W 4 ch to the beginning. Containing 20 acres

San Hopkins Surveyor S.C.

Downingville. Plat of



This Plat represents the Town of Downingville located on the lands of J. J. Tenney & Robert R. Willson, the lots on the East side of Main Street from N^o 1 to N^o 22 inclusive belong to Willson those on the west side from N^o 1 to 11 inclusive belong to Tenney, the course of the Town is N 32 W. Beginning at the S.E. corner of lot N^o 1. at which a stone is planted then running northwesterly as above the City street and alleys, and at right angles. Main Street is 66 feet wide cross street 40. and the alleys each 12 feet wide Surveyed Decr. 31. 1835
San Hopkins, Sur. S.C.
J. J. Tenney & Robert R. Willson

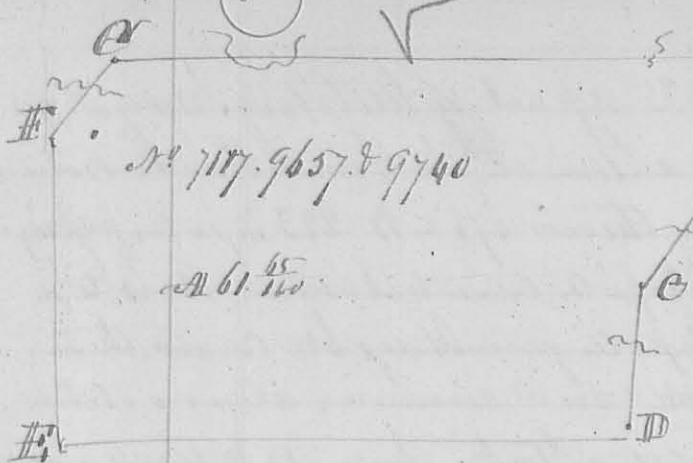
Stone

N^o 264

8340

1834

211.



Surveyed Jan'y 7th 1835 for Wood & Allen a tract of land on the water of Early, as shown by the annexed plat Beginning at Ash & Elm & Maple (Ash & Maple down) see letter A Easterly comes to Richard Kennon Survey N^o 4670 in the line of R. P. Owen Survey N^o 3680 then

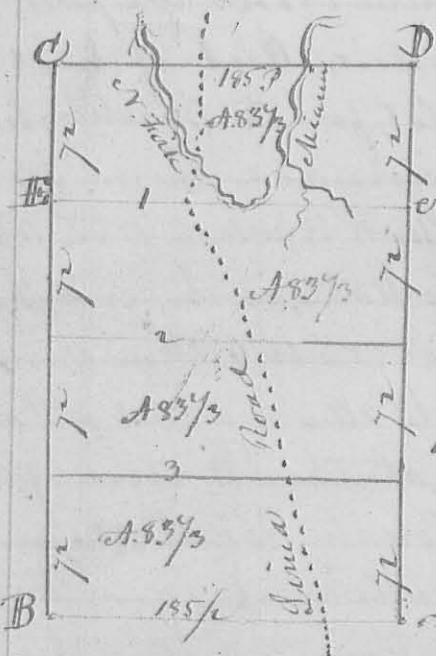
with his line S 38 E 16 poles to a stone, then South 24 poles crossing a small branch to a stone, then S 11 E 30 poles, crossing a small branch to a stone, then S 52 W 118 poles to a small Iron rod, then N 29 W 63 1/2 poles, to a stone, then N 40 E 9 poles to a stone, then N 20 W 16 3/4 poles, crossing a small branch to a stone, then N 56 E 129 poles, crossing several small branches to the beginning. Containing 41 1/2 acres.

Elbert Sharp
Lepi Sharp & Ch. Carr.

David Hopkins L. Surveyor

N^o 265

8341



This plat represents a Maples part of Survey N^o 10503 on the water of Miami Surveyed February 4th 1834 on application of John Harrod as follows: Beginning at a black hickory and a hickory, South with plat, then N 78 W 185 poles to a stake, near an Ash & black pine on road, then N 12 W 288 poles, to a swamp at the & Gray Ash, thence N 78 E 185 poles, crossing North into two, and then a line a road into to a Beech in the block line, to letter D, then S 12 E 288 poles, to the beginning. 33 3/4 acres.

4th Section subdivided this survey into four lots of 85 2/3 acres, each. South & West plat, beginning for the first division line at the 72 poles S 12 E from C. at a Gray Ash, thence N 78 E 185 poles, crossing big road North part (a bend of) road, two small branches to a dogwood cherry & hickory 2nd division line begins at Logans & Lyons in the East line of the Survey S 12 E 72 poles from the termination of the first division line, then N 78 W 185 poles, crossing the big road to two Horse beams & two beech, then begin S 12 E 72 poles from the stake corner, at a Beech, & Hornbeam, then N 85 E 185 poles, to small Ash, Elm & Hickory

D. Hopkins L. Surveyor

N^o 266

6347

A. Elder part

Surveyed March 4th 1835 a part of Military Survey N^o 7903 as follows Beginning at a stone in the Lined Road center of the East Line of the Survey thence S 78^o E N 223^o 10 poles, passing a stone & White Oak at 116^o 10 poles, comes to Rushick & May, to a stake in a prairie East 13^o 10 poles, from May W corner, thence S 26^o E 48 poles, crossing a creek, and running along a station to a stake, thence S 6^o W 18 poles, to a stake, thence N 18^o W 10 poles, crossing creek twice to a stake, thence South 34^o 2 poles, crossing creek twice to a stake, comes to James & Joseph Wallaw opposite the Mill race of James Wallaw thence S 23^o 40 E 38^o 10 poles, crossing creek several times to a stake on the East bank of the creek, thence S 26^o E 62 poles, crossing the creek several times to a stake in the South line of the original Survey, and 6 poles East of the Center thereof, thence N 78^o E with the original line 196 poles, crossing the creek to two Hickories in the Lined road S E Corner of the original Survey, thence N 16^o W 202 poles to the beginning, containing 292²⁴ 100 acres. Out of the S E corner

Surveyed a lot for the meeting house.

Meeting house lot

Beginning at two Hickories of former a thence S 78^o E 32 poles to a W. O. & Elm thence N 16^o W 15 poles to White Oak & Elm, thence N 78^o E 32 poles to a stake in the road, thence N 16^o E 15 poles to the beginning, containing three acres.

For Rev. W. Wallaw part

also Surveyed for Rev. W. Wallaw a part of Land Survey as follows Beginning at the N W corner of the Survey at a Bar Oak & Elm in a County Road, thence N 78^o E 208 poles to a stake, comes to Abram Elder, thence N 36^o W 62 poles, crossing creek several times to a stone, thence N 23^o 40 W 38^o 10 poles, to a stone, comes to Joseph Wallaw opposite Mill-race, then along said race S 69^o W 37 poles, to a stake, thence S 56^o W 30 poles, to a stake, thence N 81^o W 36^o 10 poles, to a stake, thence N 66^o W 43 poles, to a stake, thence N 26^o W 17^o 10 poles, thence N 22^o W 46 poles, to an Ash in the West line of the Survey, thence with said line S 11^o E 137 poles, to the beginning, containing 113²⁷ 100 acres. Then

Rushick

Surveyed for Rushick out of N. E corner, beginning at said N. E corner, thence N 11^o E 60 poles, to stone in lined road

March 1835

213

Hay's

then S 78^o 118^o 60 poles to Stone & White Oak then N 11^o W 200 poles to Stake in the North line of the Survey, then N 78^o E 118^o 60 poles to the beginning (at an ash & Hickory) Containing 150 acres - Also Surveyed for Hay's as follows, beginning at the Stone & White Oak corner in the fore joins lot then S 78^o W 118^o 60 poles to a stake in a prairie then N 11^o W 200 poles to a stake in a prairie, then N 78^o E 118^o 60 poles to a stake NW corner to Karkier's lot, then N 11^o E 200 poles to the beginning Containing 150 Acres

San Hoptain D. Sawyer

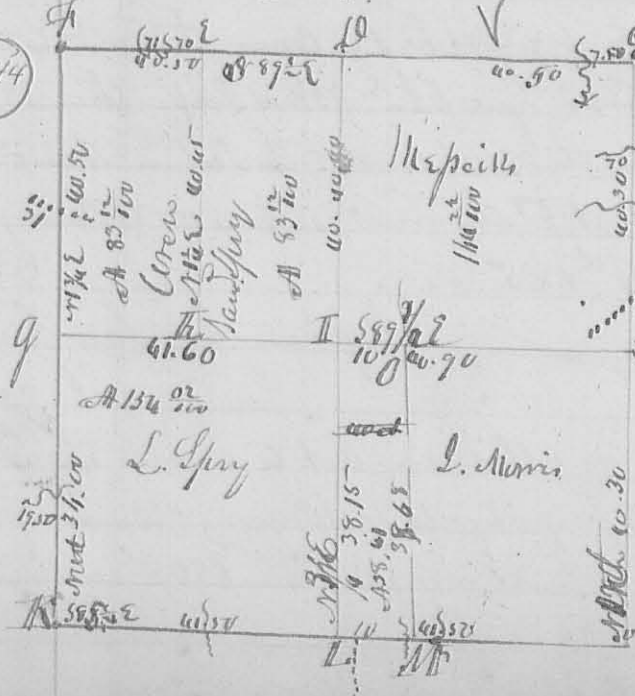
N^o 267 Surveyed March 7th 1835 for Isaac Morris the E quarter of Sec 23 R 14 N 12. beginning at the S corner of the section, then North 41 chains crossing creek at 2 & 5 chains to a White Oak 18^o 20' N 30^o 23 links, and White Oak 18^o 20' N 30^o 23 links, then N 10^o W 40 ch 55 links to a White Oak 15^o 20' N 30^o 23 links, and same 18^o 20' N 30^o 23 links, then South 30 chains 80 links to original pt. corner on the South line, then East 40 ch 50 links to the beginning, containing 166²⁴ 1/2 acres also Surveyed off the North side of said quarter section for Isaac Morris beginning the North East corner then West 40 ch 55 links to the Northwest corner then South 30 ch 50 links to a White Oak 15^o 20' N 30^o 23 links, same 30^o 23' N 40^o 27 links, then East 40 ch 55 links to a stake in a prairie, then North 9 ch 80 links to the beginning containing 40 acres

San Hoptain Surveyor D. C.

N^o 268

S 18 54 R 12 N 12

8344



the course & distance of the lines of this Survey are marked on the plat. Description of corner as follows. At Section Corner S 2 White Oak 16^o 20' N 30^o 23 links. At East corner. L White Oak 12^o 10' N 30^o 23 links, same S 15^o E 12, at E White Oak 12^o 10' N 30^o 23 links 46 White Oak 16^o 20' N 30^o 23 links. At West corner White Oak 12^o 10' N 30^o 23 links, same N 10^o E 34 links, at g. Red Oak N 10^o E 130 links, original pt. corner. To White Oak 12^o 10' N 30^o 23 links

March 1835

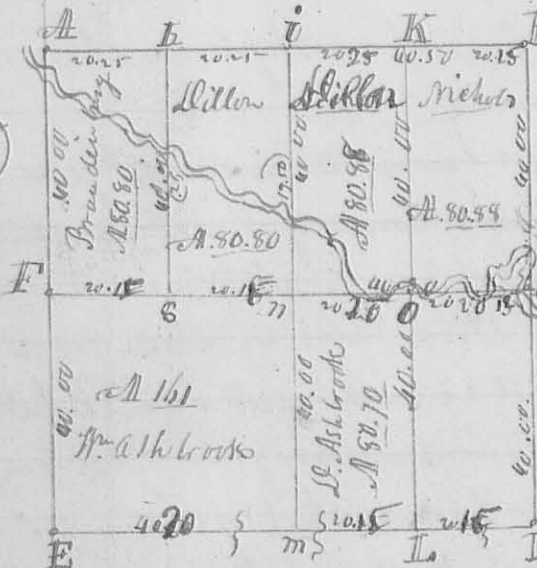
N7E 70 links, Hickory Grob 1 1/2 D 511 W 4 1/2 links at II White
 Oak 15 D N39W 23 links, Sand 12 D S53E 44 links -
 L. White Oak 20 D S60W 35 Sand 18 D S85E 46 links.
 All States in a plain, O. White Oak 15 D S76W 31 1/2 links
 15 D S60W 31 1/2

John Spry
 Joseph Morris & others March 11th 1835

Land Captain L. C. Sawyer

N^o 269

8335



This Plot is the record of the sub-division
 of Sec. 12 R 8 E. Origin at bearing
 of the line N5°10' W. present variation from
 the original course is 7° W - the length
 of each line, and the contents of each
 lot - marked on the plot.

Description of the corners of
 A B C D, section corners. C Buck 30
 1/2. Corner tree F, original corner of
 the West Line of the section, at g Red

Oak 12 D N56W 5 1/2 Links. Pin Oak 3 D S46E 9 Links. H. Buck 18
 1/2 D N77W 24 Links, and Birch 6 D S93W 27 Links, at i States
 no corner made, at n Red Oak 36 D N25W 13 Links. Buck Eye
 12 D N45W 24 Links. Original q. l. corner. L. Buck 8 D N77W
 35 Sand 18 D S45W 17 Links, at O Lyons 18 D S97W 17 Links
 N65W 8 Links. Buck 10 D S82W 49 links. K Buck Eye 10 D
 S45E 58 Links, Hickory 5 D S35W 33 Links. Also Surveyed 5 ans
 from Brandenburg off the SW q. begin at his E corner, thence S 3 E 2 ch. 50
 to a Gray oak 8 D S8W 15 Links. Lyons 6 D N5W 4 Links, then S 85 1/2 W
 20 ch. 15 Links to a States in the west line of the section, then W 2 1/2 W
 2 ch. 47 Links to the q. l. corner at F, thence N 85 1/2 E 20 1/2 - to the begin
 ning Surveyed March 16th 1835

L. Captain L. C. Sawyer

N^o 270

In pursuance of an "Act," entitled "an Act to enable the holders
 of Land within this State to perpetuate testimony relative to their
 lands," Proceeded on the 18th day of March 1835, on the appli-
 cation of George Korman, Jonathan Korman and Joshua Redd
 to plant corner stones at the N.E. & N.W. corners of said George Korman

March 18. 1835

215

N.W. cor.

than Scaman's land or poles, to wit. at the N.E. corner of Worthington Survey N^o 4399, in the line of R. Davis Survey N^o 3683 and S.E. Corner to Saml. Wallaces Survey N^o 2873. Original call, 3 White Oaks, two of them now cut down. Stumps standing about two feet high, one yet stands about 15 inches in diameter bears 57¹/₂ links distant, planted here a Blue Lime Stone of a triangular form about one foot under ground marked thus: X. thence Surveyed that North line of said Survey N^o 4399 running from said triangular Stone West 1/4 Pole, crossing a small branch at 12 1/2 poles, about of the same at 16 1/2 poles, a Gum Wight tree 10 inches in diameter at 24 poles, to the N.W. corner of said Survey N^o 4399 in said Wallaces line, Original call, two Gum & White Walnut, all now down and in a decaying condition, planted here a flat Sand Stone marked X from which a hickory 6 inches in diameter bears 166 1/4 links distant.

beginning 36.05

I certify the foregoing to be a true copy of Survey made by me in pursuance of an agreement of the parties concerned all of whom have by a notice of the line & place of making the same, and that Jonathan Scaman & Joshua Ritt were present as chain carriers, and George Scaman as Blazer.

Geo. Hopkins L. C. Surveyor

N^o 271

8345

Surveyed March 19th 1835 for Robert Satchers the S.E. 1/4 of S18. T3. R14 MRS as follows. Beginning at the Corner between sections 11. 12. 17. 18 of T3. R14. at a Stone the original corner tree down, thence N 75 E 40 chains to a White Oak 20 1/2 N 23 E 20 Links, and White Oak 12 1/2 S 14 E 16 Links thence N 89 1/2 W 40 ch. 65 Links to a Stone White Oak 18 1/2 S 22 E 19 1/2 Links, and White Oak 12 1/2 S 22 W 68 1/2 Links, thence N 75 W 40 ch. 46 Links to a stake in a spring, and in the fourth line of the section, thence with said line S 89 1/2 E 40 ch. 65 Links, to the beginning containing 164 ³⁴/₁₀₀ acres.

Geo. Hopkins L. C. Surveyor

N^o 272

8346

March 20th 1835 for J.P. Miller the South half of S 28. T 3. R 13 MRS Beginning at the N.W. corner of the section a White Oak 20 1/2 N 40 E 14 Links, and White Oak S 30 1/2 W 15 Links, thence N 7 E 40 chains to Stone & White Oak 15 1/2 S 15 W 38 Links, Hickory 16 1/2 S 40 E 38 Links, then S 89 1/2 E 80 chains crossing several roads and Mad Run to a Stone, thence S 16 W 60 ch to a Stone, thence S 89 1/2 W 80 ch

to the beginning containing 320 acres

Dan Hopkins L. C. Surveyor

N^o 273

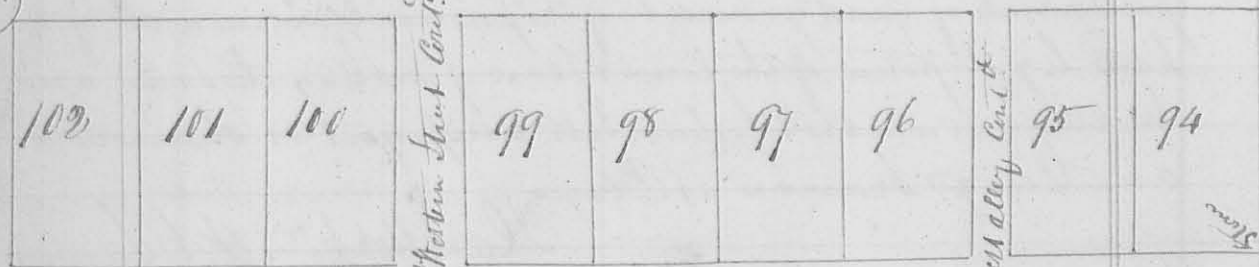
Surveyed for J. P. Miller a lot of ^{land} embracing the Carding Machine south of the town of West Liberty being a part of the N^o 9th of S 27 35 R 13 W N 1 or follow beginning at a stake in the side of the Road a cherry 12 1/2 ft. bears S 67 1/2 W 50 Links then with said Road S 15 1/2 E 4 chains to a stake then S 75 W 5 chains to a White Oak S 8 1/2 E S 45 1/2 E 37 links then N 15 W 4 ch to a Jack Oak S 8 1/2 E S 77 1/2 E 12 1/2 Links and same 10 1/2 W 12 1/2 Links then S 75 1/2 E 5 chains to the beginning containing 320 acres

Dan Hopkins L. C. Surveyor

N^o 274

Addition to Middleburg by Levi Grubbs & William Grubbs

(8271)



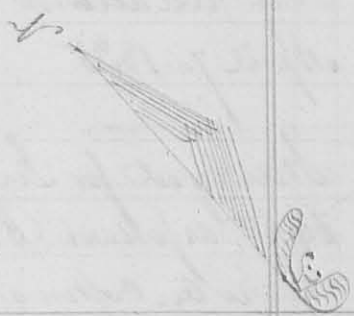
North Street of former addition 60 feet wide

Surveyed April 2nd 1835 for Levi Grubbs an Addition to the former plat of Middleburg in Logan as shown by the foregoing plat from lot N^o 94 the S.E. corner of which represents the S.W. corner of lot N^o 66 of a former addition (see page 190) at which stone is planted marked F to lot N^o 102 inclusive; which lots were surveyed beginning at a stone at the stone fronting on North Street which form West to East S 42 1/2 E 66 feet extending back N 47 1/2 E 133 feet. Western Alley Continued is 18 1/2 feet wide, Western Street Continued is 33 feet wide At the same time

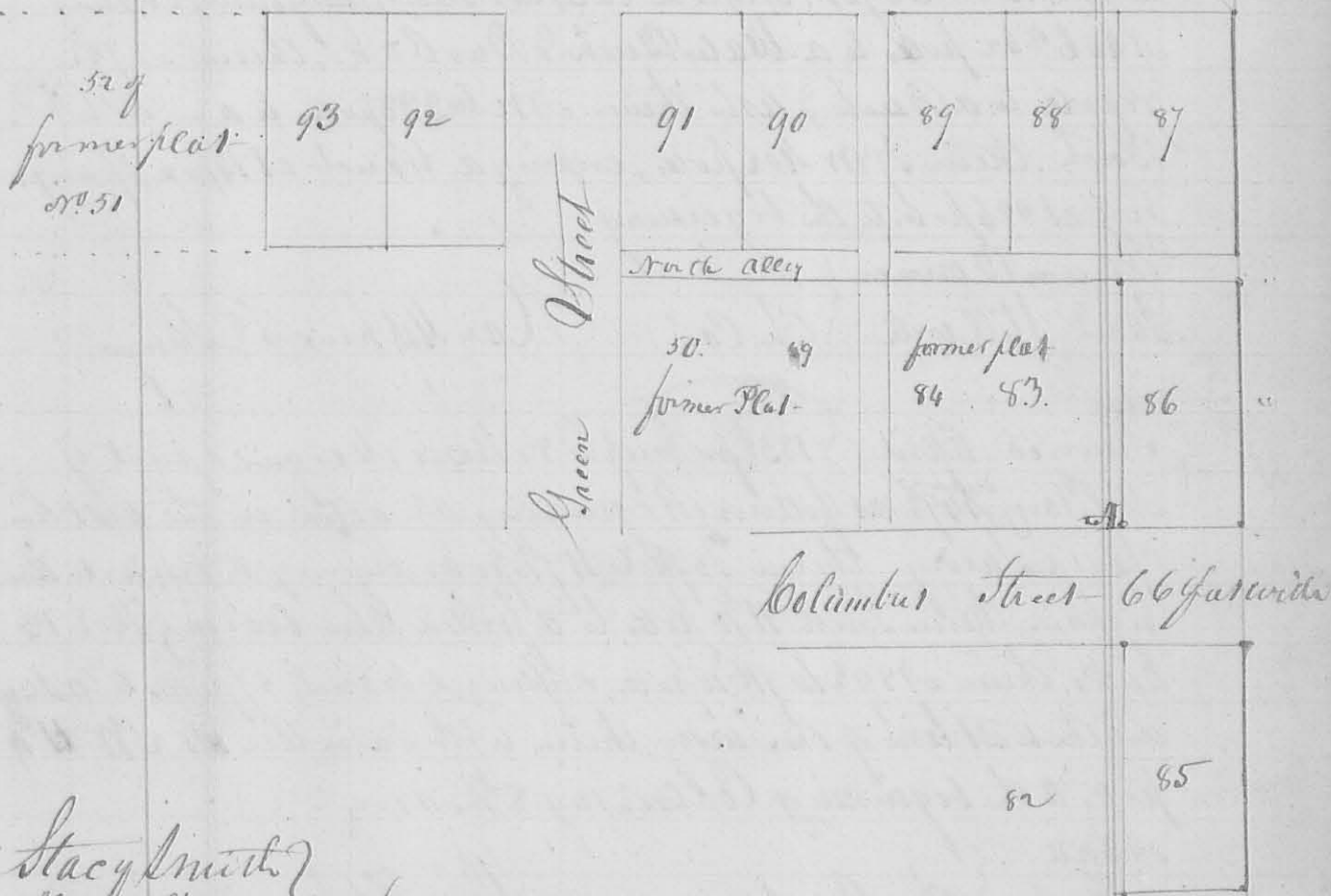
Also

Surveyed for Levi Grub, the addition to the town of Middleburg shown by the annexed plat, comes of the lots and streets the same as in William Grub's addition, the lots N^o 85, 86 front on Columbus Street 66 feet and extend back 132 feet. the others from N^o 87 to 93 inclusive front on North Street 66 feet and extend back 132 feet. N^o 91, 92 front also their lengths on Green Street, which is 66 feet wide, the alley between 87, 90 is 16 1/2 feet wide.

This Survey begins at the S.E. corner of lot N^o 83 of former addition, see page 190, also see it on the plat.



North Street Continued 66 feet wide



Stacy Smith }
 Abram Grub } Ch. Carver

Wm Hopkins, L.C. Surveyor

April AD 1835

N^o 275

3347

Surveyed for Joel Stratton Fifty acres of Land, part of Military Survey N^o 3753 as follows Beginning at a White Walnut & Beech, thence S 52^o W 113 poles, crossing a small branch at 33 poles, & on at 56 poles to a small Sugar, thence 138 E 70^o poles, to a Stake & small Hickory, thence N 32^o E 112 poles, to a stone, thence N 38 W 70^o poles, to the beginning Containing 5^o Acres -

Johnson Truitt }
John Underwood } Ch. Car.
April 7. 1835

Sam Hopkins L. C. Surveyor

N^o 276

Surveyed for Jeremiah Stillwell April 20th 1835. Survey N^o 6465 as follows Beginning at two large beeches, thence N 12 E 100 poles, crossing Spring run at 74 poles, and on at 316 poles, to two Ashes and an Elm, thence N 78 E 120 poles, crossing a run at 117 to two Buck Eyes (original Oaks, two beeches, not found) thence N 40 E 262 poles, to a Water Beech & Bur Oak, thence N 78 E 78 poles, to a Beech & Ash, thence N 12 W 238 poles, to an Ash & Beech, thence N 78 W 402 poles, crossing a branch at 14 poles Spring run at 226 poles, to the beginning

Thermon Bonner }
Sam^l. Stillwell } Ch. Car.

Sam Hopkins L. C. Surveyor

N^o 277

Surveyed April 1835 for Joseph & Moses Marquis a part of Military ^{Survey} N^o 4498 as follows Beginning at a stone in the west line of said Survey thence 189 E 117^o poles, crossing a creek to three hickories, thence South 11^o poles, to a forked Elm bearing 160 E 13 links, thence N 89 E to 116 poles, crossing a branch 57 poles to a stone in the west line of the Survey, thence with said line N 2^o W 11^o poles, to the beginning Containing 8^o Acres.

A. Satt }
J. Parks } Ch. Car.

Sam Hopkins L. C. Surveyor

N^o 278

Surveyed April 1835 for Solomon Smith a part of Military Survey N^o 9938 as follows Beginning at a Buck thorn wood & Sugar tree corner to John Ramsey, thence N 78 W 153 poles, to

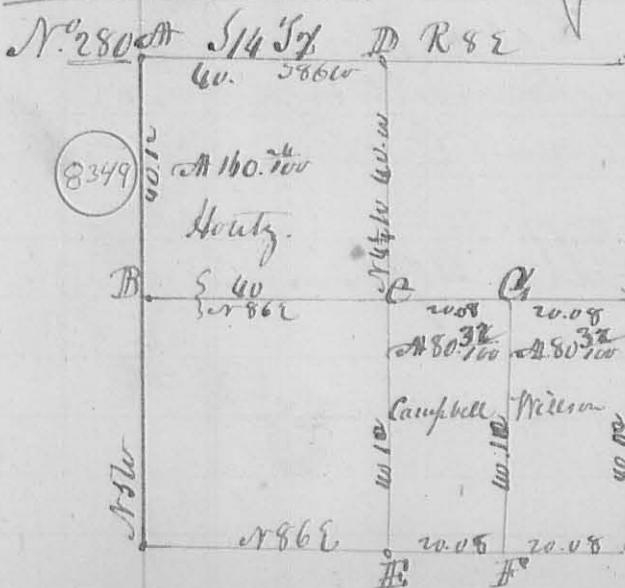
April A.D. 1835

to a Beech Sugar & Water Mead in Dan. Hites line, thence
S 88° 39' W to a Beech, two dogwoods & Hornbeam in the north line
of the Survey, thence N 78° E 153 poles, to 3 Beeches, John Ransey's NW
Corner, thence NW 90 poles, to the beginning containing 85 1/2
Acres. also Alex. Ransey a part of the same Survey as
follows Beginning as above at Beech Ironwood and Sugar
thence NW 66 poles to Ironwood & Beech, thence N 79° W 153 poles,
to 3 Water Beeches & Ironwood, comes to said Hites, thence N 72° E
with his line 66 poles, to a Beech Sugar & Water Mead, thence
with the North line of the foregoing lot N 78° E 153 poles, to the begin-
ning containing 62 1/2 poles Acres.

Solomon Smith
John Ransey } Ch. Car.
Lant Hopkins L. Surveyor

N^o 279 Surveyed May 26th 1835 for J. Roper the East half of the
SE quarter of S10. T7 S of R. 8 E beginning at the center of the
east line of the section at a Beech 15 Links N 49° W 17 Links and
Beech NW 135 E 20 1/2 links, thence S 86° 10' W 20 ch 08 L. to an Elm
S 82° 16' 3/4 E 10 1/2 links, and Elm S 82° 18' W 18 Links, thence
N 3° 50' E 40 chains to an Ash NW 123 W 1/2 links, Run Oak
S 82° W N 23 E 7 links, thence N 86° 10' E 20 ch. 72 L. to the S. E. Corner
of the section thence N 3° 50' W 40. ch to the beginning containing
80 40/100 Acres.

Jed Roger
Nathan Rogin } Ch. Car.
Lant Hopkins L. Surveyor



Description of Corners.
at A NW Corner of the lot at B Elm 18 L.
159 W 79 L. Beech 18 L. W. N 89 E 49 L. E. B.
Hickory 22 L. Dogwood 8 L. W. 238 L.
III to 28 L. D. Black Oak 6 L. S. 7 L. W. 10 L.
Hickory 20 L. W. 57 L. 18 L. Hickory 9 L. just II
Randolphs NW Corner. Hickory 22 L. Sec. 20
I. same 6 L. W. N 68 W 20 L. C. Beech 15 L. W. 86 L.
20 L. Elm 15 L. W. 184 L.

Lant Hopkins L. Surveyor

May 1836

220
N^o 281

8350

July 17 1835

Surveyed and divided for John Harwood July 17.
1835 272 acres of land off the North end of Survey No.
9907 originally surveyed in the name of Thomas Warren,
beginning at the N.W. corner of the Survey, at a Hickory
tree with three Saw beams, the 1st down, thence S 12 E
108 ¹/₁₀ poles to a Large Pigeon Oak, Buckeye & Sugar in the
bend of a creek, thence curved at 104 poles, thence N 78 E
400 poles crossing a road at 18 poles, one at 92 poles, making
a Buck corner at 116 ¹/₁₀ poles, a road at 126 poles, branch at 140
a bend of the same at 190 poles a branch at 209 & one at 342 to
2 Beeches in the ~~East~~ Northern of the Survey, thence N 12 W 108 ¹/₁₀
poles crossing a branch at 49 poles, and at 107 poles to two bushes
N.E. corner of the Survey, thence thence S 78 W 400 crossing
branches to the beginning, at same time laid off 500 acres
on the East end of the foregoing Survey by a line beginning
at 2 Beeches S 78 W 73 ¹/₁₀ poles, from the third Beecher mentioned
above extending in the East line of the Survey, thence N 12 W
108 ¹/₁₀ poles to the third Beecher, two from oak root in the North
line of the Survey & S 78 W 73 ¹/₁₀ poles, from two Beeches at the N.E.
corner of the Survey

Also

Surveyed at the same time part of Duncan all Section Survey
N^o (number not known at the time of making the Survey) as
follows. Beginning at the N.E. corner, two Beeches thence S 12 E
124 poles crossing a road at 16 poles, creek at 62 poles one at
112, one at 206 poles, to Buck & Ironwood, thence S 78 W 202 poles
crossing road at 20 poles, branch at 152 poles, to two Beeches
thence N 12 W 242 poles, crossing branches to two bushes & Sugar
thence N 78 E 202 poles, to beginning containing 303 ⁵/₁₀₀
acres

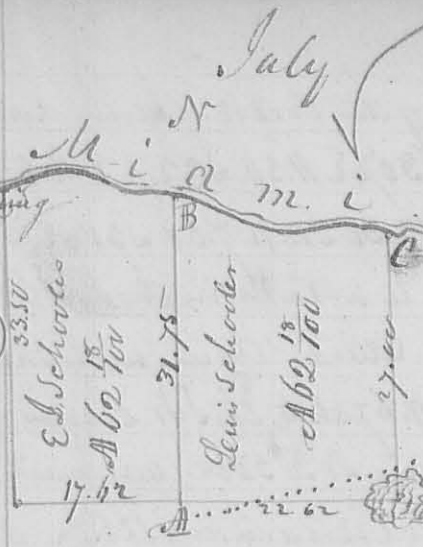
July 17th 1835

Land Office S. I. County

July A.D. 1835

N^o 282

Registery



Surveyed July 18. 1835 for Lewis & Evan J. Scholers the west half of fractional Sect. 18 S. 3. R. 12 W. as follows beginning at the NW corner of said section at a stake near the river then South 33. ch 50 links to the W corner of the section, thence with the South line thence of East 40 ch. 25 links crossing a road at 22 ch. to a stake in a pond thence North 27 chains crossing road at 4.30 to a red oak 7 1/2 S. 53 1/2 E 17 Links, a B. Oak 8 1/2 S. 55 W 14 links on the bank of the river, thence with the Meander as follows N 77 1/2 E 6.25 S 88 1/2 W 2.00 S 79 1/4 W 2.50 N 77 1/4 W 4.35 N 66 W 3.55 N 72 W 4.35 N 77 E 5.20 N 65 W 3.90 N 81 1/2 W 3.30 S 81 W 3.37 S 71 W 2.50 to the beginning containing 124 3/4 acres. Divided into two equal parts by the line A. B. Beginning at A on the South line of the section 17 ch 62 links from the NW corner thence at an Ash 8 1/2 S. East 39 Links, & Dogwood 8 1/2 S. 80 W 26 Links, running thence North 31 ch 75 Links to a Buckeye 8 1/2 S. 82 1/2 W 17 & Hickory 16 1/2 S. 78 E 12 Links at the end of the line A. B. distance from Lewis Scholers N. E. corner on the river (See sketch)

L. A. Hopkins, L. C. Sawyer.

N^o 283

8352

Surveyed July 31st 1835 for Abram Gardner the S. E. q. of the South East of S. 4 T. 5 R. 8 E Beginning at the NW corner a Beech 18 1/2 S. 87 W 30 Links, Sugar tree 7 1/2 E 8 Links in the South line of the Sect. & center of South line of said q. thence N. 3. 50 W 20 chains to a Beech 6 1/2 S. 80 W 4 Links, White Oak 10 1/2 S. N 45 W 43 S, thence N 86. 10 E 20 ch. 30 links to a Beech 8 1/2 S. 110 E 4 Links and a pine 18 1/2 S. 60 E 11 Links, thence S 3. 50 E 20 chains to the South East corner of the section, thence S 86 10 W 20 chains 50 Links to the beginning containing 61 acres

L. A. Hopkins, L. C. Sawyer.

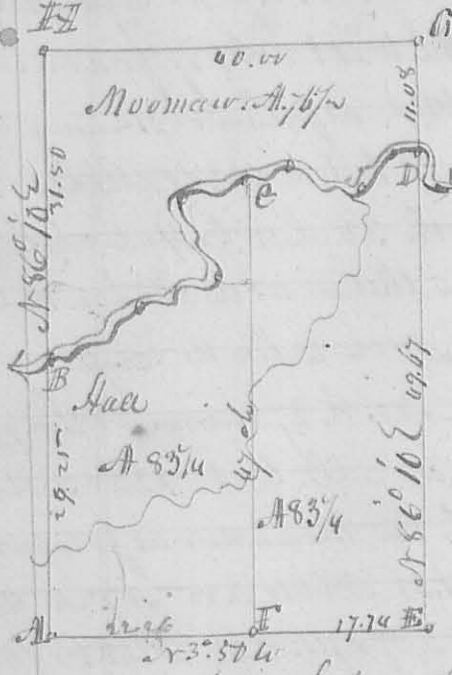
N^o 284

8353

Surveyed August 1. 1835 for Saml^d Hall a part of the S. W. q. of S. 4 T. 5 R. 8 E and part of the West half of the S. E. q. of the same Sect. as follows Beginning at the NW corner on the West line of the Sect. to a white oak thence N 86. 10 E 29 ch. 25 Links to a pinked hollow 10 1/2 S. 85 W 38 S. Gray ash 18 1/2 S. N 67 W 55 S on the creek, the

Aug 1835

Corner stake standing in the center of the creek, thence down the creek with its meanders as follows S30°E 11.50 S22°E 8.50 N66°E 9.40



g. 40 186 12.30 S15W 7.50 S37°E 5.00
 S47°W 2.50 to a stake in the south line of the lot see letter D thence with said line S86.10 to 49.67 ch to the SW corner of the section thence N3°50W 40 chains to the beginning, containing 166 1/2 acres - divided by the right line C & F into two equal parts as follows. Beginning at F in the west line of the section 17.74 from the SW corner at a Post 15 1/2 S 54 E 7 Links, Red 8 1/2 N 12 E 42 1/2 Links thence N 86 10 E, crossing a small branch several times 47 ch. to a stake on the river bank.

Comers

Description of Comers. At pt. com B. forked willow & ash above described. E. Sect. corner II. Corner of Moomaw's land. Red Elm 36 1/2 N 25 W 17 1/2 Links, Ironwood 6 1/2 S 50 W 36 Links. C. Post 18 1/2 N 38 W 30 Links. Sugar tree 17 1/2 S 8 Links.

Aug 1. 1835

Dan Hopkins S. P. C.

N° 285

8353

Surveyed for R. Patterson Fifty acres of Land being part of the NW 1/4 of tract S27 3/4 R 14 W R 1 as follows beginning at the SW corner of the sect. thence N 7 1/2 E 40 chains to a Black Oak 22 1/2 N 36 W 42 Links, White Oak Grub 2 1/2 S 11 E 39 L. thence S 89 1/2 E 12 ch. 30 Links to a Black Oak 27 1/2 N 33 E 24 Links a Black Oak Grub 2 1/2 S 69 1/2 W 36 Links thence 1/2 W 40 chains to a stake in a prairie in the south line of the section thence N 89 1/2 W 12 ch. 50 Links to the beginning. Containing 50 acres.

Aug. 1835

Dan Hopkins S. P. C.

N° 286

8354

Surveyed off the NW 1/4 of S 18 T 5. N 8 E beginning at the SE corner of said quarter a White Oak 15 1/2 N 36 W 12 1/2 Links, W. O 8 1/2 S 11 E 5 Links thence S 86.10 to 6 ch. 50 to a White Oak 15 1/2 N 20 W 29 Links. Hickory 8 1/2 N 61 E 34 Links thence N 3° 30 W 30 ch 7 1/2 to Red Oak 15 1/2 N 7 1/2 E 22. W. O. 12 1/2 N 14 W 15 Links thence N 86.10 E 6 ch. 30 L to a W. O. 16 1/2 N 56 E 4 Links. Hickory 22 1/2

Oct- 1835

S 71 W 18 L. thence S 3° 50 E 30.76 to beginning. Containing 90 acres. D. Hopkins S. P. C.

Oct 1835

223

N^o 287 Surveyed Oct. 16 1835 for Philip Le dricks part of the S. E. q^r. of S 22 S. R. 14 M. R. D. as follows. Beginning at the NW corner of said quarter Section a Hickory 15th N 95 E 36 Links, Bur. Oak 18th N 35 W 57 Links, then W East 1.52 to R. Oak 12th W 20 Links, and E to W 10th 30 65th Links, then S by W 39.25 crossing the creek to Hickory 12th S 8 E 11 Links, & Hickory 8th N 23th W 30 Links, then West 1.52 to the SW corner of said corner. orig. witness trees, then N by E 39.25 crossing creek at about 8 p.m. to the beginning containing six Acres.

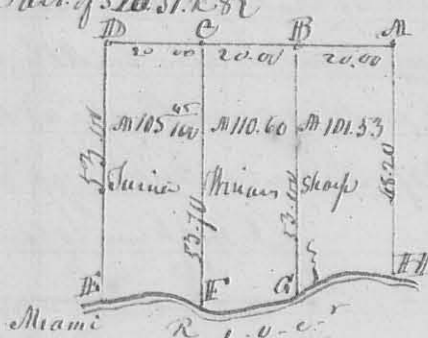
8355

Oct 16 1835

Jan Hopkins Sur. L. C.

N^o 289

Part of S 20 S. R 8 E



8356

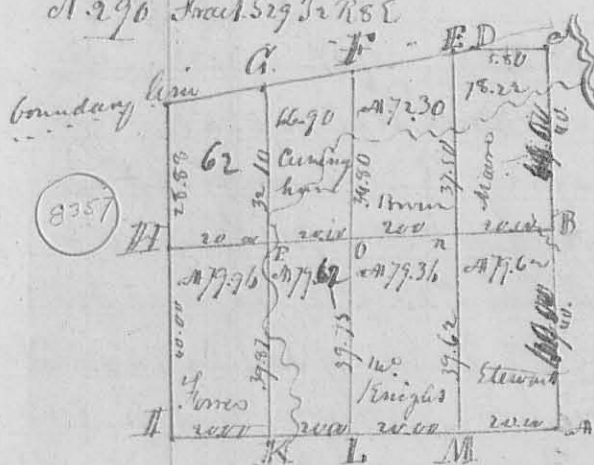
Divided tract S 20 S. R 8 E between James Minam & Shoop as shown by the plat. Beginning at B. corner between Martin & Groves on the South line of S 16. at an old 3rd N 40 W 32th Ch 2nd S 76 11th Links, then S 5 E 53 ch to the River see letter a, a dy camas 1st S 5 E 15 Links, Hackberry 24th N 15 W 68th.

then began at C. orig. p. Post then S 5 E 53 ch. 70 Links, to a stone at H. then began at D corner on South line of S 16. between Groves & James a pole 15th N 11 W 14 Links, & Hickory, then S 5 E 33 ch. to River at G a Log 15th West 10 Links Buck Eye 8th N 37 W 10 Links.

Oct. 1835

Jan Hopkins L. C. Surveyor

N^o 290 Tract S 27 S. R 8 E



8357

This Plat represents the survey sub. division of S 27 S. R 8 E. between the individuals whose names are written on the map - Corner of the line N 37 W. boundary line runs from the East by 8 W. the description of corners as follows. at A Section Corner B. Beech 22th N 35 W 6th Links, Beech 18th S 6 E 37 Links. C Sect. corner D. orig. corner a boundary (C. l. w. cut down was the corner tree) E Sugar 12th S 5 E 55 Links, Ironwood 3rd S 10 E 8th Links, F Sugar 18th S 5 E 33 Buck Eye 8th N 35 W 33 Links, G Beech 12th N 78 W 13th. Beech 5th S 8 E 6th H orig. p. corner I Sect. corner. K Old & Hickory from one root 12th N 78 W 8th Beech 16th N 34 E 25th B. at the

then began at C. orig. p. Post then S 5 E 53 ch. 70 Links, to a stone at H. then began at D corner on South line of S 16. between Groves & James a pole 15th N 11 W 14 Links, & Hickory, then S 5 E 33 ch. to River at G a Log 15th West 10 Links Buck Eye 8th N 37 W 10 Links.

Orig. gr. Post on South line of the section M Beech 20 1/2 185 E
 4 Links Beech 15 1/2 178 1/2 to 15 Links M Beech 6 1/2 53 1/2 5 Links from
 wood 3 1/2 16 1/2 11 1/2 0 Elm 4 1/2 58 1/2 8 1/2 Hickory 6 1/2 16 1/2 11 1/2
 21 1/2 Red Oak 36 1/2 124 1/2 35 Ironwood 2 1/2 5 1/2 7 Links.
 for the length of the line & quantity of Acres see the plat
 Surveyed Nov. 9th 1835

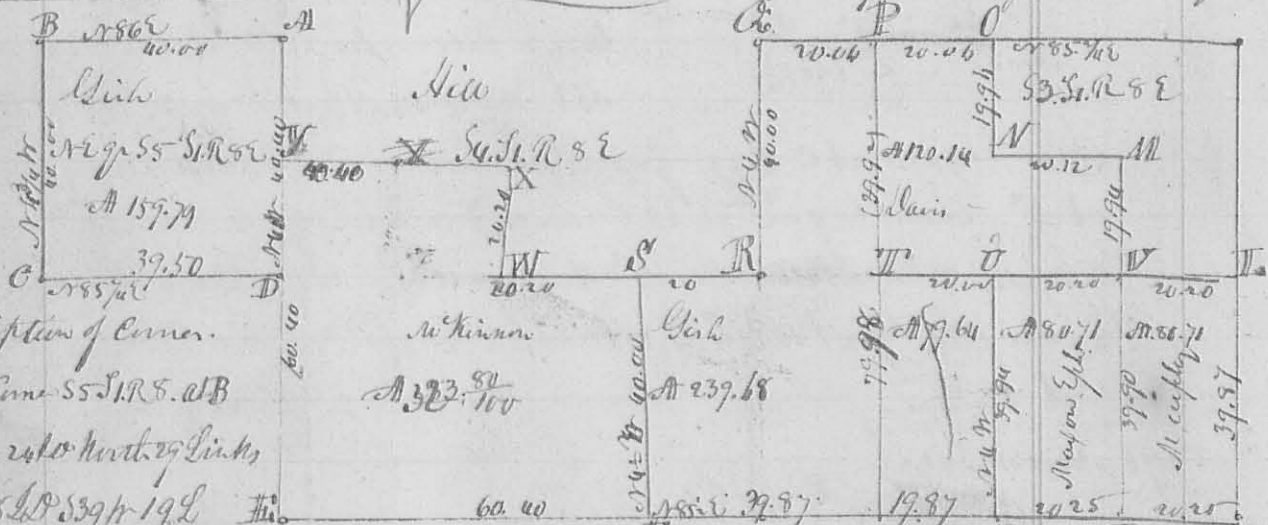
Amza Saunders
 Silas Arbogast ch. carrier

Lan Hoptkin
 Logan County Surveyor

N^o 291 Surveyed Nov. 9th 1835 a line for Amza Saunders & James Weatherhead
 dividing part S 36 S 75 R 7 E Lewis town Reserve as follows Beginning on
 the center of the North line of said section at the original gr. corner a Beech
 15 1/2 18 1/2 L Ironwood 3 1/2 cut down, marked new angle 4 1/2 53 1/2
 11 Links, then S 33 3/4 E 26 ch. 30 Links crossing run Creek at 10 ch to the
 boundary line a Spruce Beech 15 1/2 157 1/2 33 Links Buck Eye 8 1/2 58 1/2
 16 1/2 Links

L Hoptkin Logan County Surveyor

N^o 292



Description of Corner.

A. N.E. Corner S 5 S 1 R 5. 21 B
 Pin Oak 24 1/2 North 29 Links
 Hickory 8 1/2 53 1/2 19 L
 C Beech 18 1/2 56 1/2 25 Hickory 12 1/2 18 1/2 25 Links D Beech 18 1/2 56 1/2 26 L Beech
 22 1/2 N 11 20 Links Ironwood 18 1/2 18 1/2 30 Links E N^o 257 page 207 H S.W. Corner of S 4 F Beech
 12 1/2 54 1/2 8 Links Sugar 18 1/2 18 1/2 30 Links G Hickory 18 1/2 18 1/2 28 Links A W
 24 1/2 53 1/2 20 L H Original gr. corner on South line of S 3. p. II Logwood 3 1/2
 17 1/2 W 34 L & Logwood 11 1/2 54 1/2 13 Links K S.E. Corner of Sect. II Sugar 6 1/2
 Iron 14 Links Beech 15 1/2 17 1/2 57 Links M Beech 22 17 1/2 17 L Beech 12 1/2
 18 1/2 W 12 B N Hickory 18 1/2 58 1/2 11 1/2 L Beech 8 1/2 16 1/2 31 1/2 B O Beech 10 1/2 52 1/2
 56 1/2 27 L Sugar 5 1/2 16 1/2 20 Links P Elm 22 1/2 56 1/2 42 L Hickory 10 1/2
 13 1/2 W 14 L Q Sect. corner R. gr. Post between S 3 4 Beech 6 1/2 18 1/2 25 L
 Water Beech (down) 11 1/2 18 1/2 20 L S 32 E 11 L Lynn 16 1/2 53 1/2 17 L
 T Hickory 18 1/2 16 1/2 19 L Iron 12 1/2 54 1/2 25 U Gray Ash 15 1/2 54 1/2 38 V Iron 20 1/2
 Iron 20 Hickory 6 1/2 54 1/2 14 L W 1/2 1/2 1/2 ch. corner Nov. 11 1835 L Hoptkin L. carrier

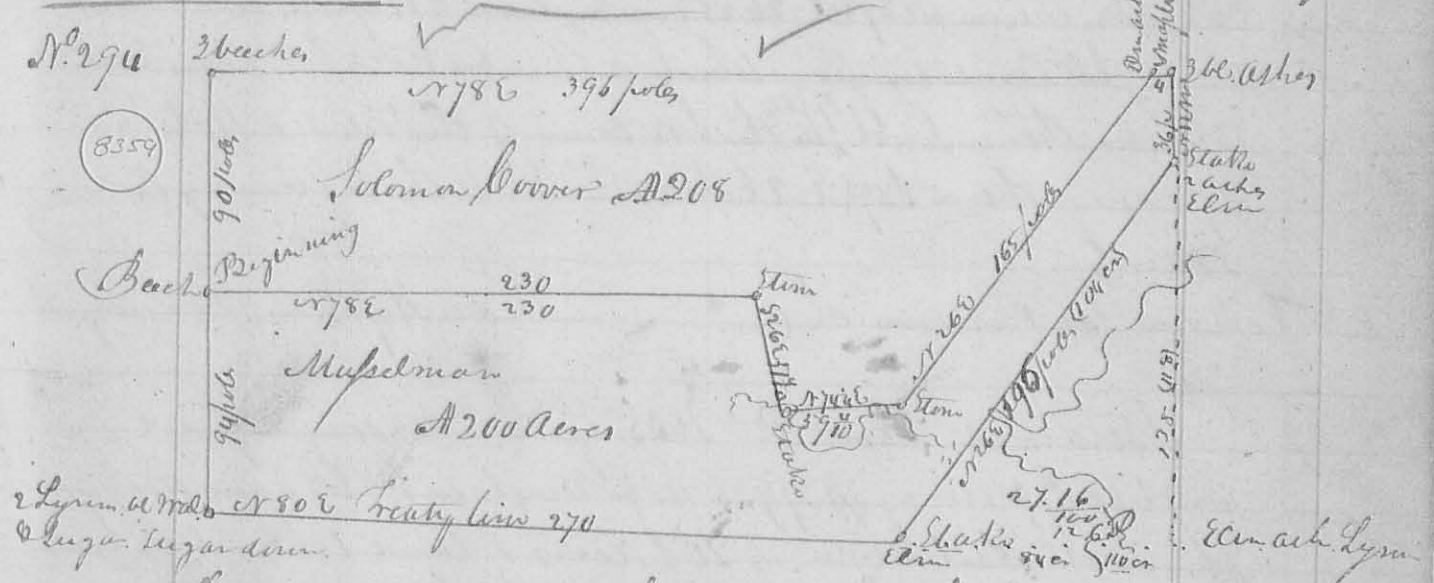
8359

Surveyed Nov. 16. 1835 for White Narrows as follows beginning at White Walnut Ash & Elmwood NW Corner of a Fifty Acre lot of Land sold by J^r Mahill to Ausley, thence N 12 N 80 poles to an Ash and beech another Corner to said Fifty Acre, thence S 78 85 poles to an Elm stump in the Sandusky road, thence N 30 6 75 poles to a yellow stump in said road, thence by 800 263 poles to a Hickory Ash & 3 small water beeches from one root in the west line of the original survey of which this is a part thence with said line S 12 133 1/4 poles to 2 beeches, comes to corner, thence N 88 131 poles to the beginning, containing 153 Acres, being part of Military Survey N^o 10404 & 10179 at same time surveyed part of the same Survey for said Narrows as follows. Beginning at the NW Corner of said Survey two Corners, next standing, one Pine O. & Beech down, thence N 12 85 2 1/4 poles to a Hickory Ash & 3 small ^{water} beeches from one root, thence N 78 85 263 poles to a yellow stump in the Sandusky road thence with said road N 30 6 73 1/4 poles to a Red Oak in said road in in the north line of the original survey, thence with said line by 800 310 poles to the beginning, containing 93 ²⁴ 100 Acres.

John Thomas, W^m Ausley, Ch. Camion, Dan Hopkins, L. C. Sawyer

N^o 294

8359



The above plat represents the sub. division of the south part of Military Survey N^o 10404 & 10179 between Solomon Cover & Mupelman. Beginning at the beech above noted, thence N 78 85 cutting off 200 acres to Mupelman leaving 208 Acres for Cover, according to a survey formerly made by J^r Mahill on p. 63. N^o 82 Nov. 17. 1835

Dan Hopkins, L. C. Sawyer