

N^o 343

6388

Surveyed Sept. 23rd 1836 for William Husby part of Survey N^o 404 & 10179 as follows. Beginning at 3 beeches in the west line of the Survey S 12 E 190 poles from the NW corner of the original Survey then N 75 E 58 poles to a Beech & Gum, then N 12 W 137 3/4 poles to 2 beeches & Ash - then S 78 W 58 poles to a small beech Ash & 2 Water Beeches in the west line of Survey - then with said line S 12 E 137 3/4 poles to the beginning - Containing 50 Acres - at 5 arm trees

Surveyed out of same original Survey as before. Beginning at a Sycamore stump in the Sandusky Road Corner to land conveyed by White Warren to Jerome - then S 78 W 24 poles to a thorn bush, then S 30 W 29 poles, cupping a creek to a Black Walnut and small White Hickory from one root on the south side of a branch then S 54 W 818 poles to a Stake at the Big road, then with said Road N 30 E 48 poles to the beginning. Containing 5 acres

N^o 344

Notices

Sept 24th 1836. On application of Joseph S. Curt, and on producing the following Notice to wit: "I do certify that the County Surveyor of Logan on the 24th Sept. 1836, is to establish the NW corner of Joseph S. Curt's land, and the South West corner of Henry Seaman's Sept 3rd 1836. 3rd and 4th Townships. Joseph S. Curt

I do certify Nathaniel & John Thomas that the County Surveyor of Logan is to establish two corners in Massachusetts west line, the two western corners of the M. Council tract adjoining said Thomas' land on the 24th Sept. 1836 - Joseph S. Curt." And being satisfied that the Survey had been duly served, at least twenty days previous to the date

of Survey thereof

of said Survey, I proceeded to make a Survey, and plant corners in pursuance of said notice, as follows to wit. At A. B. A. N. Westery Corner to S. Curt & S. Westery to Henry Seaman, took the following deposition to wit: "Deposition taken on the lands of Joseph S. Curt in 3rd and 4th Townships Logan County Ohio on the 24th Sept. 1836 in pursuance of the Notice here to

S. Curt & S. Westery to Henry Seaman, took the following deposition to wit: "Deposition taken on the lands of Joseph S. Curt in 3rd and 4th Townships Logan County Ohio on the 24th Sept. 1836 in pursuance of the Notice here to

attached to wit at A on the plat N. Westly Corner of
 said Carl's land. Abraham B. Dillow of lawful age
 being first duly affirmed deposes & says in answer to
 interrogatories - Question by Sawyer - Do you know any
 thing of a corner, ever having stood here? And if so
 when & by whom was it made? and what was the time
 on which it was originally marked? Answer by
 deponent - About 20 years since, there was a corner
 made here by John Garwood a Surveyor employed
 by Mr. Thomas James Sr. who was then the owner of
 the land. The corner was marked on a Sugar bush
 of Hickory - Question by same - Do you know if John
 Garwood the Surveyor mentioned in your answer to
 the foregoing question was a County Surveyor or not -
 Ans. by same - I do not know whether he was a County
 Surveyor or not - Question by same - Do you know if this corner
 has been recognized as Joseph S. Carl's N. Westly corner by
 the owner of the adjoining lands ever since the Survey of
 which you speak, was made by said Garwood? Ans.
 by same - I never heard it disputed until recently -
 Question by Joshua Sharp - Was John Garwood Sr. the owner
 of the said ^{in the} land present when the corner was made by the
 Surveyor as aforesaid - Answer by same - I think he was
 not present - Question by same - Did James W. Mar-
 mon, former County Surveyor, ever run a line from or to
 this corner through the original Survey, and if so when?
 Answer by same - He did, about 3 years since run from
 the corner opposite on the eastern line to this corner -
 Question by Joseph S. Carl - Who showed the corner to said
 Marmon when he run the line of which you speak?
 Answer by same - Henry Starnan - The Surveyor having
 come out southerly from this corner from S to N -
 Question by same - Did Henry Starnan admit this
 corner to him when James W. Marmon run the line?
 Answer by same - Yes, that was my understanding that
 this admission was made by Starnan & Carl both -
 and further the deponent saith not

Also at the same time and place came David R. ^{De} Dillon
of said County, of lawful age, & after being duly affirmed
deposes & says in answer to interrogatories, Question by Surveyor
How long have you been acquainted with the existence of
a corner at this point. Answer by Deponent - About three years
I was present when James W. Marmas run the line for the
Survey to this point. Question by same. Were any of the corner
trees standing at that time, and if so, how were they
marked? Answer by same, the corner trees were all gone
at that time, except the body of a Hickory, which was then
said to be the corner having marks upon it like a Military
Corner. And I supposed it to be a corner tree, it having been
shown me for a corner. Question by same. Who showed you
this corner? Answer by same Henry Seamon -
Question by Joseph Stone. When this corner was shown
you by Henry Seamon, did he admit it to be the corner
between his land and mine? Answer by same same
Yes. Seamon & Stone both admitted the corner at that
time. Question by same Do you recollect if James W. Marmas
min. directed me to drive a stake at this corner at the time
he made the Survey, and if I did so? Answer by same
I think I do recollect that Marmas told you to drive a
stake, but that you did so I do not recollect
and further the deponent saith not. David De Dillon
Also at same time & place, at B. on the plat in this
Survey came Job Sharp of said County, of lawful age, and
after being duly affirmed in answer
to interrogatories, deposes & says, Question by Surveyor
What do you know of this corner, by whom was it made &
when, and upon what kind of timber was it marked? -
Answer by Deponent. I know that this was always for
thirty years past, considered the corner between the tract
formerly owned by my Father, John Sharp, and Thomas
James Sw. formerly called the Connells tract, but I
do not know on what timber it was marked, or by whom
made. Question by same How did you understand
this corner was to be placed between your Father and

and the McConnell tract in reference to the original
 Corner of the Survey? Answer by James I understand
 this was to be the Center Corner between the original
 Corners. Question by James. Did you ever know the
 precise point at which this Corner was understood to
 be placed, or ever see any marks which you under-
 stood to be Corner marks? Answer by James. I do not
 know the precise point, but believe it to be within one rod
 of the end of the line just measured from the Stone planted
 at A. I never saw any marks which I knew to be corner
 marks at this point. And further this Deponent saith
 not ^{John} Sharp. At same time and place came
 John Sharp of said County, and of lawful age, after
 being duly affirmed deponent and says in answer to
 interrogatory. Question by Surveyor. What do you know
 about a Corner at this point, please state all you know
 about it Answer by James. I know just about what my
 brother John Sharp has just stated, and nothing more, and
 further this deponent saith not John Sharp. At same
 At the original trees being all down ^{mark} goes up cutting the
 roots of a Hickory, after having taken the deposition of A
 B. D. Dillan & David B. Dillan I proceeded to plant a Stone from
 which a Hickory 24 inches diameter bears 65 1/2 links, and
 a Buck 12 inches diameter bears 48 1/2 links, at the
 planting of which were present Thomas James, Joshua
 Sharp, Henry James, Joseph S. Carl, John Sharp, John
 Sharp, William Grub, David B. Dillan, Abraham
 B. Dillan. Then we measured the line A B 535 6 6 1/2 rods, at
 the end of which took the deposition of John Sharp & John
 Sharp, after which I proceeded to plant a Stone from
 which a black Oak 18 inches diameter bears N 25 E
 23 links, being N 35 W 28 links from the Center of the Southern
 line of the Survey. The Oak claimed for the original
 Corner here, is still standing but shows no marks indi-
 cating a corner. The other two, a Sugar is now
 present at planting this Corner, Joshua Sharp, John Sharp
 John Sharp, Joseph S. Carl, David B. Dillan, Abraham B. Dillan.

Nathanial Thomas & Charles Cook I Certify the 255
following depositions & field Note to be correct and true
as taken by me in making the Survey aforesaid -

A. con
D. Hopkins Co. Sur. G. C.

N^o 345

Surveyed Oct 12th 1836 on application of Stokes & Colbert
part of Survey N^o 1117 for Charles Cook as follows. Beginning at
Sugar & Dogwood trees N 37^o W 54 poles to 2 Sugar Ash & Elm -
the Elm broke off about 6 feet high then N 51^o W 25^o poles to a Walnut
in a Big road bearing N 35^o E 23 links then with the road S 34 W
30 poles when an Ash 15 inches diameter bears S 66^o E 40 links then
S 37^o E 70 poles to a White Oak Sugar & Dogwood then N 52^o E
38 poles to the beginning containing 15^o acres at same time sur-
veyed in N^o 9657. 9740 & 9679 as follows for Robert Trout colored
man. Beginning as above then S 37^o E 112 poles to 3 Ironwood
2 pines one not then S 53^o W 70^o poles to a Hickory Sugar & Dog-
wood then N 37^o W 105 poles to 2 bushes Ash then S 53^o W 32 poles to a
Stake in the edge of a meadow then S 37^o W 60 poles to a
Stake then N 53^o E 6 poles to a Stake then N^o E 16 poles to
a Stake then N 35^o E 46 poles to a Stake when an Ash bears
S 66^o E 40 links then S 37^o E 70 poles to White Oak Sugar & Dogwood
then N 53^o E 38 poles to the beginning containing 7^o 5 acres -
then for Stokes & Colbert. Beginning at the Stake called for as
above then S 53^o W 56 poles to a Red Oak & Hickory then S 19^o E
82 poles to an Ash Walnut & Water Beech & black Ash (meadow) -
then S 75^o W 155 poles to a Stake in a Big road then in the
road N 62^o E 40 poles N 26^o E 140 poles N 40^o E 32 poles N 54^o E 29 poles
then leaving the road S 37^o E 60 poles to the beginning containing

83³⁶
700 Acres -
Oliver Stokes 2

Sarah Cook 3 Ch. carriers
D. Hopkins Co. Sur. G. C.

N^o 346

3389

Surveyed for J. Dickson as follows. Beginning at a stone in William
Dickson's South line N. W. corner of Logan with then S 30^o E 42 ch. 06 l.
to a stone then S 54^o W 22 ch. 25 links to a stone in said William
Dickson's South line then with said line N 42^o E 6 ch.

E. Black Oak 6 1/2 P 1/2 W 10 Links Hickory 20 1/2 P 5/8 E 18 Links 357
for contents see the plat

David Ferry }
John Meane }
Wm Rainden } Ch
 } mens.

Dan Hopkins County Surveyor L.C.

N^o 350 Surveyed Nov. 9. 1836 for John Meane the E. att half of the
NW quarter of S10. T1R 8 E Beginning at the quarter section corner
on the North line of the section, one of the original corner trees, down
thence S 85 1/2 W 19 ch 87 Link to a Hickory 18 1/2 P NW 28 links, Gray Ash
30 1/2 P S 62 0 Link thence S 6 3/4 E 10 chains cupping several branches
several times to a Beech 22 1/2 P S 58 E 36 Links, Ash 12 1/2 P N 9 W
37 links - thence N 85 E 19 ch 87 links cupping several trees at 50 links
to a Red Oak 12 1/2 P with 23 L, Black Ash 3 1/2 P East 28 links
thence N 4 3/4 W 40 ch. to the beginning Containing 79 1/2^{acres} -

David Ferry }
Wm Rainden } ch.

Dan Hopkins Co. Sur. L.C.

N^o 351 Nov. 15. 1836. Surveyed for Land Jenkins part of Military Survey
N^o 9931 as follows Beginning at a Beech in the North line of said Survey
East side of a Mill race, thence S 16 1/2 E 18 1/2 poles to a stake, thence S 46 E
14 1/2 poles to a stake, thence S 81 E 5 poles to a Sugar S.W. corner to the
Town of North Wood thence with the Western line thereof N 1/2 W 28 1/2
poles to the North line of said Survey - thence with said line S 78 W
15 1/2 poles to the beginning Containing Two acres (2 acres) -

John Bone }
Alvin Clark } ch mens

Dan Hopkins Co. Sur. L.C.

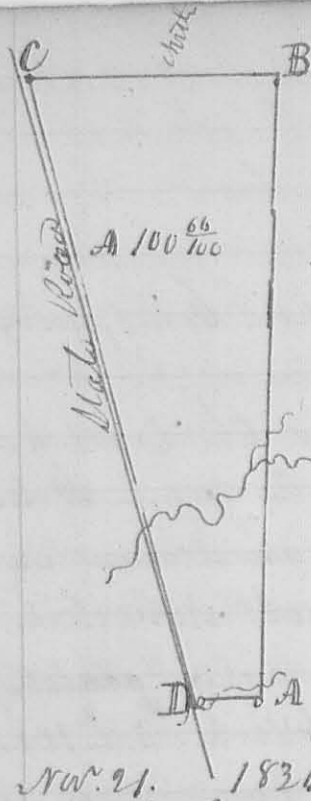
N^o 352 Surveyed Nov. 15. 1836 for Wm Leeds part of Military Survey
N^o 9954 as follows - Beginning at two Dogwoods N.W. corner
to Land Surveyed by Joe W. Raper to said Leeds thence S 16 E 18 1/2
poles to a Stake plus a Beech of Large Dogwood, thence N 78 E
89 poles cupping Creek to a Red Oak, Elm & Ash, thence
N 12 W 180 poles cupping Miami at 114 poles to a Beech of Sugar
thence S 78 W 89 poles to the beginning, Containing 100 acres -

Dan Hopkins Co. Sur. L.C.

358

N^o 353

8394

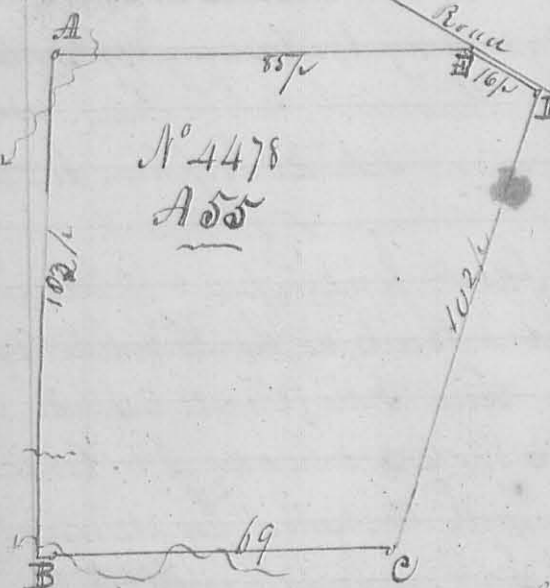


Surveyed for James Gordon on application of Robert Patterson Esq. part of Survey N^o 5045 as follows. Beginning at the South East Corner of said Survey (See letter A) at a white oak & Black Oak, thence N 15° 25' 58" pole, crossing the Mack River at 86 poles, ~~more~~ branch at 101 poles to two Black Oaks, thence West 102 1/2 poles to two Black Oaks (both down), in the Big road thence with said road 120 to 270 poles, crossing a run at 190 poles to a stem, the original corner is gone, thence East 22 poles, crossing a branch at 18 poles to the beginning, containing 100 66/100 acres. Dan Hopkins Co. Sur. G. C.

Nov. 21. 1836.
Robert Patterson Esq. & James Gordon

N^o 354

8395



Surveyed Nov. 26. 1836 for Isaac Savage part of Military Survey N^o 4478 as follows. Beginning at a Sugar and Elm N. E. corner, corner to Joseph Marquis and come to Sape Millner (See letter C) thence C D N 19° 6' 102 poles to Mack in the parcelled road, and in the Southly line of George Kroukops, thence with his line N 71° 10' 16 poles to a hickory, comes between said Kroukops & Isaac Savage, thence with 88 poles, crossing a stem, comes between said Kroukops & Isaac Savage, at 39 poles, crossing Isaac Savage branch at 74 poles to a stem near a small Hickory, thence South 103 poles, crossing a branch at 102 poles to a stem in Joseph Marquis, North line, thence 69 poles, crossing a small branch seen at times to the beginning, containing 55 acres. Isaac Savage, David Barrett & James Gordon

Nov. 26. 1836.
Isaac Savage, David Barrett & James Gordon

Dan Hopkins Co. Sur. G. C.



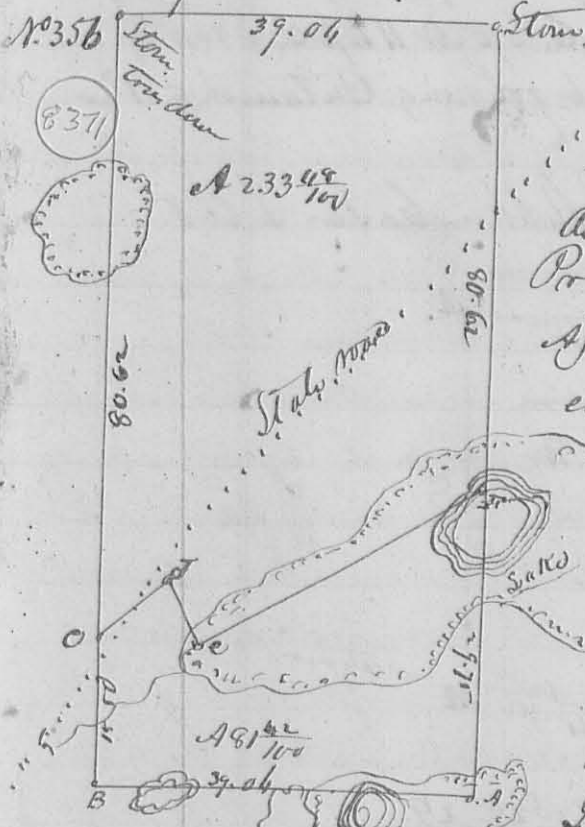
N^o 355

Surveyed Dec 31st 1836 for Thomas Scott part of Survey N^o 9881 as follows. Beginning at a Black Oak in the line between Mahons heirs & James Stewart then with said line S 78^o W 68 poles, cuping a prain to a stake corner between said Stewart and John Pollock then with said Pollocks East line S 12^o E 47 poles to two White Oaks one forked. Then N 78^o E 68 poles, cuping neck of a prain to a stake between two White Oak Stumps. Then N 12^o W 47 poles to the beginning containing 20 acres - at same time

8396

Surveyed for James Stewart in same Origin at Survey as follows - Beginning at Center of the West line John Pollocks S.W. Corner then with his South line, N 78^o E 100 poles, cuping a ditch at 39 poles, & small branch at 48 poles to stake near a Hickory Grub. then S 12^o E 20 poles, cuping a small branch at about 21 poles, to two White Oak Grubs & White thorn, in the Greenville treaty line, then with said line S 78^o W 100 poles to a White Oak & two Red Oaks S.W. Corner of the origin at Survey - then with the line thereof N 12^o W 200 poles to the beginning containing 125 acres.

6th S. B. R. 11 Miles



Surveyed Dec 29. 1836 for Alexander Cook 81^{1/2} acres of land of the South end of the East half of S. B. R. 14 Miles as follows. - Beginning at a Stump in a Pointing S. E. Corner of said section. See letter A then N 89^o W 39 ch. 6 Links, cuping the edge of the Populus Oaks cuping a small run and popping through a Willow Pond to a White Oak 15 S. D. N 88^o W 73 Links, and White Oak 22 S. D. N 12^o E 11 Links, then N 12^o E 15 ch. 50 Links, to a White Oak 18 S. D. N 31^o W 16 Links, then N 57^o E 9 ch. 50 Links, to a White Oak 18 S. D. N 57^o E 37 Links, White Oak 18 S. D. S 29^o W 39 Links, then S 22^o E 7 ch. 80 Links, to a Stake in the edge of a ditch, then with said ditch N 61^o E 33 ch. 50 Links, to the east line of said section in a Lake. then S 12^o W 29 ch. 75 Links, to the beginning.

Wm. Sharp.
Her. P. orco et c.

Land Office, Cedar
S.C.

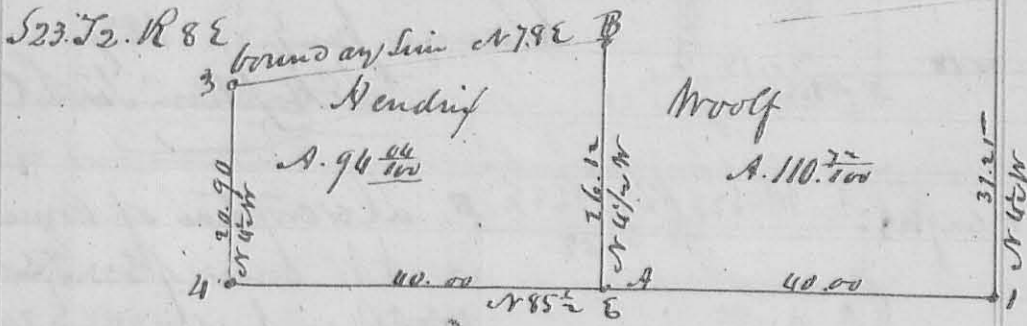
39 1/2
156.068

F. R. Oak 15. 1st DP N10E 15 Links Hickory 6. 1st DP S19E 5 Links
 G. Beech 15. 569E 11 Links Jr. Wood N30W 10 Links.
 I. Ash 12. 1st DP S48W 23 Links. Ash 6. 1st DP N48E 35 Links
 H. R. Oak. 6. 1st DP N89W 41. Sugar 22. 1st DP N80E 47.5
 K. Beech 9. 1st DP. N55E 33 Links. Jr. Wood 3. 1st DP S16W 14 Links.
 L. Corner of Section. -

Dan Hopkins Co. Sur. 56.

N. 360.

8488



Description of Corner. at A. Beech 15. 1st DP N12W 23 Links. Elm 22. 1st DP S5E 40 Links
 " B Sugar 6. 1st DP S53W 6 Links. Hickory 2. 1st DP N52E 4 Links.

at 1. 2. 3. 4. Origin at Section Corner -

The foregoing survey of S23 T2 R 8 E was made for Hendrix & Woolf
 Jan'y 25. & 26. 1837.

Dan Hopkins Co. Sur. 6.

Also at Larnston.

N. 361

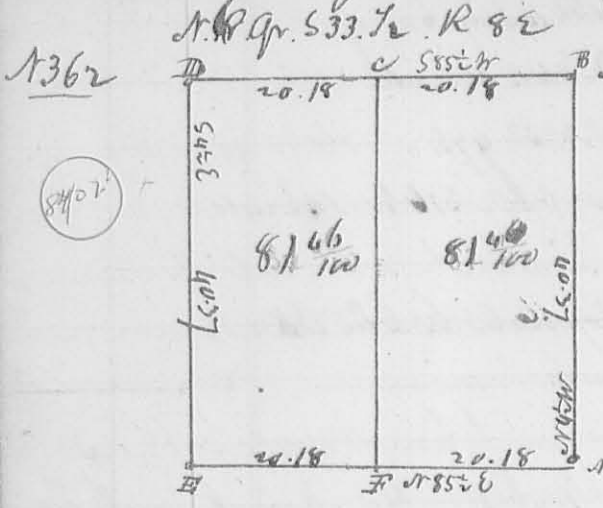
8481

Survey is for Larnston. the SW quarter of Section 28. T2 S
 R 8 E. & divides the Larnston as follows. Beginning at the South
 East Corner of the Larnston at an Elm Ash 12. 1st DP S53W 10.
 Links. thence N30.57W 33 ch. crossing a Creek to J. Driebach's
 S. E. Corner. thence with his south line S86.70W 39 ch. 80 Links
 crossing a Creek at 6. 7. & 10 ch. to the original quarter corner
 between S28 & 29. at Beech 56. 1st DP S61W 40. Links. Ditch 4. 1st DP N57E 24 Links. thence
 S3.50E 38 ch. 20 Links to the SW Corner of the said section in the old
 brown clay line. thence with said line N78E to the beginning
 the division line begins on the N. line of the quarter 19 ch 90
 Links from either corner at an Elm 8. 1st DP S75W 23 Links. Beech 11.
 1st DP. N68E 45 Links. thence S30.50E 35 ch. 62 Links to Sugar 2. 1st DP
 N35.7E 11 Links. Beech 15. 1st DP S108E 21 Links. in the boundary line -

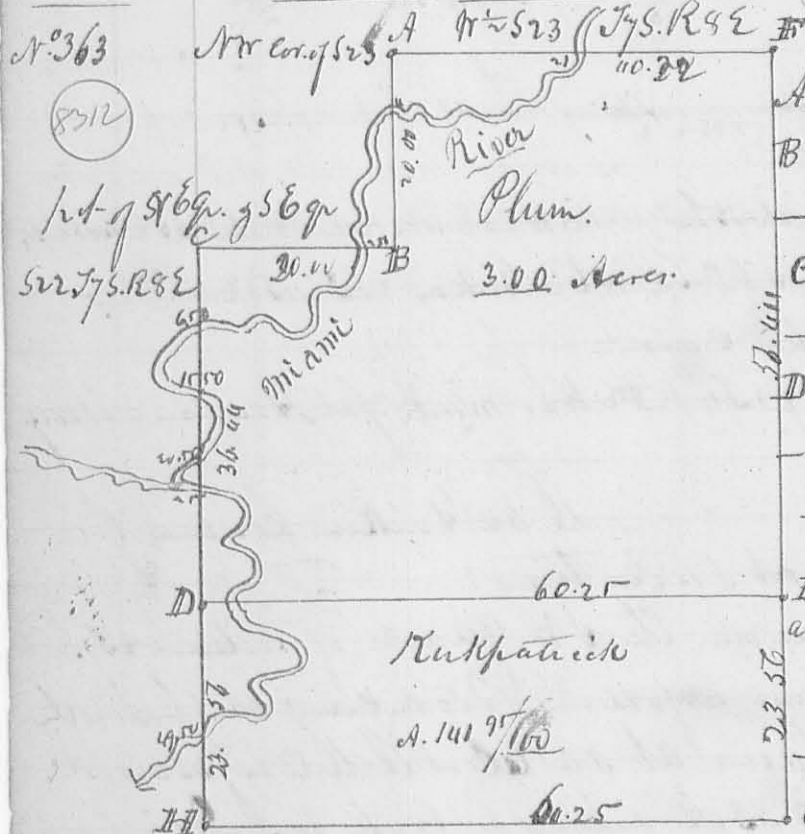
D. Hopkins S. G.

1362 January 1837

Corner



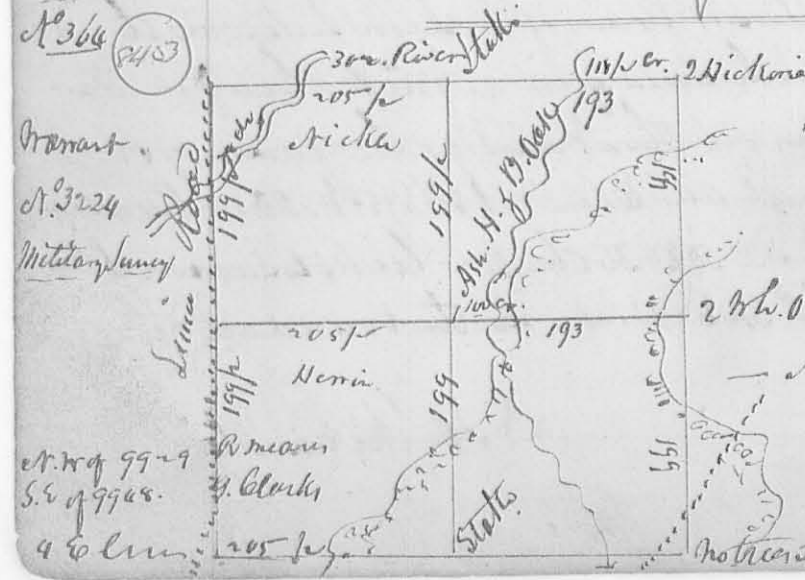
At A. Orig. q. Corner.
 B. N. E. Corner of the Sect
 C. Elm 18 D 527 W 10 S. 1/2 A. 1000 2.569 665
 D. q. Corner between 533.428.
 Sugar 8. D 530 W 17 S. 1/2 A. 1000 4.587 195.
 Sugar 6. N 66 E 36 S. Sugar 569 W 7 S. 1/2 S. -
 Surveyed June 27, 1837.
 L. A. Hopkins Sur. G. C.



Description of Corner
 A. NW corner of 523.775. R. 9 E
 B. W. Oak 20 In. dia. 585 1/2 34 S. 1/2 S. 1/2
 - Ditto 18 .. " N 94 W 88 "
 C. Beech 30 D. 574 E 9 "
 - Ironwood 2 .. " N 62 W 6 "
 D. Gray Ash 24 .. " N 31 W 29. "
 Jack O. 4 .. " S 18 E 36 "
 W. Oak 22 .. " S 84 E 30 "
 - ditto 12 .. " N 15 E 48 "
 at F. q. Corner between 523 & 76.
 G. q. Corner on south line of 23.
 H. Buckeye 15 D. N 42 E 8 1/2 S. 1/2 S. 1/2
 I. Hickory 8 .. " S 89 W 46 "

The foregoing Survey was made for Mr. Kirkpatrick June 28, 1837
 L. A. Hopkins S. G. C.

Wm. Hopkins
 J. P. Cherry Ch. Men.



This Survey on West of N. 3224 was divided East and West by me February 3, 1837. the line N. P. having been previously made.
 2 W. O. Grubs. between two W. O. Oaks.
 - N. 1/2. Present bearing.
 L. A. Hopkins Co. Sur. G. C.

Wm. Hopkins
 J. P. Cherry Ch. Men.

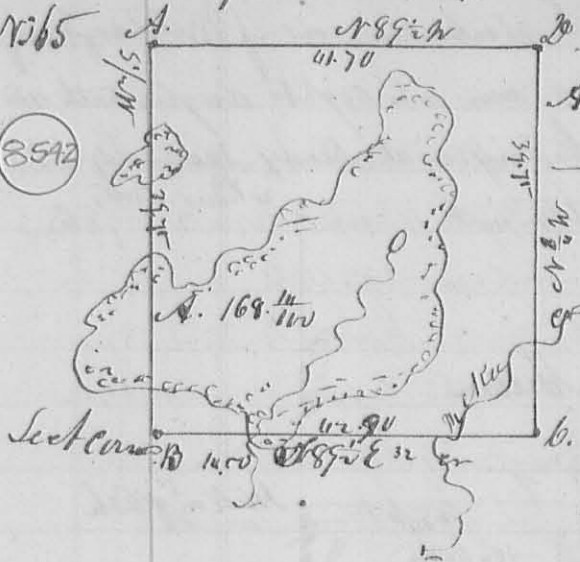
The original of this page is blank or missing.

S.W. Qr. S31 T4. R13 M. ⁴ *Hebman* 1837

264

N^o 365

8542



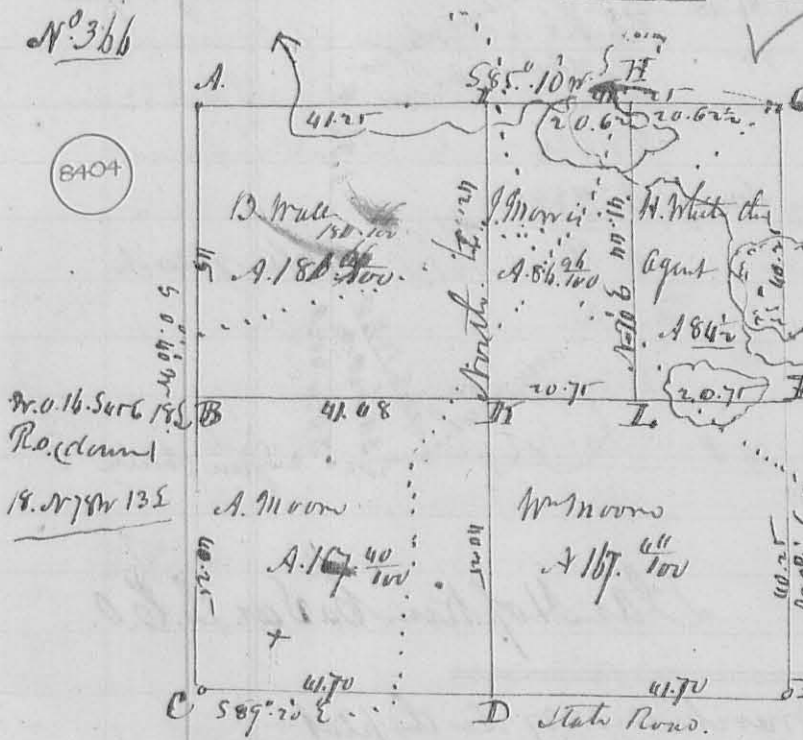
Description of Corners.

- A. Wh. oak 8 Inches diameter 50 E 6 S 1/4
- Hickory 15 " " N 62 W 40 "
- B. S.W. corner of the Sect
- C. Stone in a State road. Center of. S 1/4
- D. Stone of Jack Oak 3 S 1/4 S 1/4 W 15 S 1/4
- on other trees near.

Surveyed for John Hewitt Feb. 1837
D. H. Hopkins, C. S. & C. O.

N^o 366

8404



This Plot represents the Survey and Sub. division of S 1/4 T 4. R 13 M. between the parties whose names are marked on the Plot.

The description of Corners is as follows.

- A. NW Corner of the Section a log road S. 1/4. N 29 E 27 S 1/4
- W. Oak 6 " " N 38 W 13. "
- B. Gr. Sect. Corner between S 1/4 D 23.
- C. Sub Corner. Pot. Oak

- 18 S. D. S 13 1/4 W 16 S 1/4. The other bearing tree gives a stone planted
- D. Bl. Oak 18 S. D. N 68 W 35 S 1/4 Jack oak 3 S 1/4 N 24 E 25 S 1/4.
- E. Bl. oak 12 S. D. N 22 E 36. White oak (dunn) 22 " " N 65 W 26 S 1/4 -
- F. Corners to Map of Braiden, in West line of S 1/4.
- G. Stone, Wh oak 16 S. D. S 30 W 19 S 1/4. Wh. Oak 16 S. D. N 50 E 57 S 1/4.
- H. Stone in Prarry. White oak 15 S. D. N 85 E 125 S 1/4. S. 1/4 S 1/4.
- I. White oak 18 S. D. S 86 E 46 S. Lane 20 S. D. S 61 W 35 S 1/4.
- K. Bl. Oak 18 " " S 79 W 25 S. White oak 24 S. D. N 50 E 28 S 1/4.
- L. Wh. oak 20 " " S 29 W 15 S. Stone 2 S. D. N 14 E 36 S 1/4.

J. Campbell
J. Beard Chm.
Feb. 1837.

Note: the South line of the above sect is in a State road.

D. H. Hopkins, C. S. & C. O.

March 1837 ✓

N^o 369

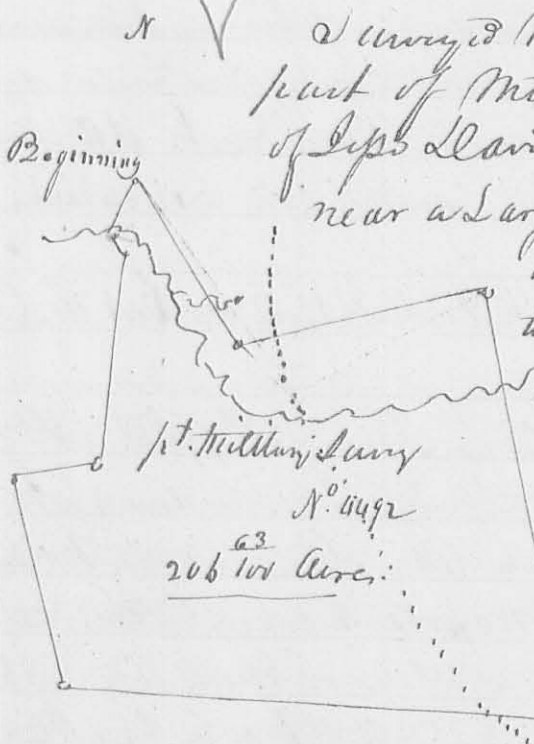
Surveyed for John Shelby 4 Acres Land as follows. Beginning at S.E. corner of said Shelby land, thence N 26° W 14 ch 83 Links to a stake in a prairie, thence S 66° W 3 chain to a stake, thence S 24° E 14 ch 12 Links to a stake in the South line of the said Shelby land, thence with said line N 80° E 3 ch 6 Links to the beginning.
Saml Hopkins Co. S. C.

N^o 370.

Surveyed for Amos Wilkins part of Military Survey N^o 4492 as follows. Beginning at a stone in David Krons Kopf South line, comes to Isaac Savage, thence S 73° E 32 poles to a stone in a state road, thence S 19° W 30 poles to a stone, thence N 73° W 32 poles to a stone, thence N 19° E 30 poles to the beginning containing Acres.
Saml Hopkins Co. S. C.

N^o 371

8716



Surveyed March 22. 1837 for John Booth part of Military Survey N^o 4492 in the name of Jess Lavin, as follows. Beginning at a stone near a large white oak in the West line of Louis Scaman, thence S 40° E 80 poles to a stone ending spring run at. — thence N 71° E 105 1/2 poles, ending a road at 38 poles to a stone, come to said Scaman, thence S 19° E 186 poles, ending a branch at 44 to a stone, thence S 88° W 220 poles, ending road at 38 poles to a stone, 130 oak trees and two Hickories, thence N 19° W 89 poles to 2 Red oaks, thence S 71° E 34 poles to a stone, S 67° 50/9 Suits from two small oaks, thence N 88 poles to a white Walnut plant a stone, thence N 40° W 8 poles, thence S 25° E 20 poles, ending a branch to the beginning. Containing 206 63/100 acres.

J. Armstrong &
Err. Randle 3 ch. men.

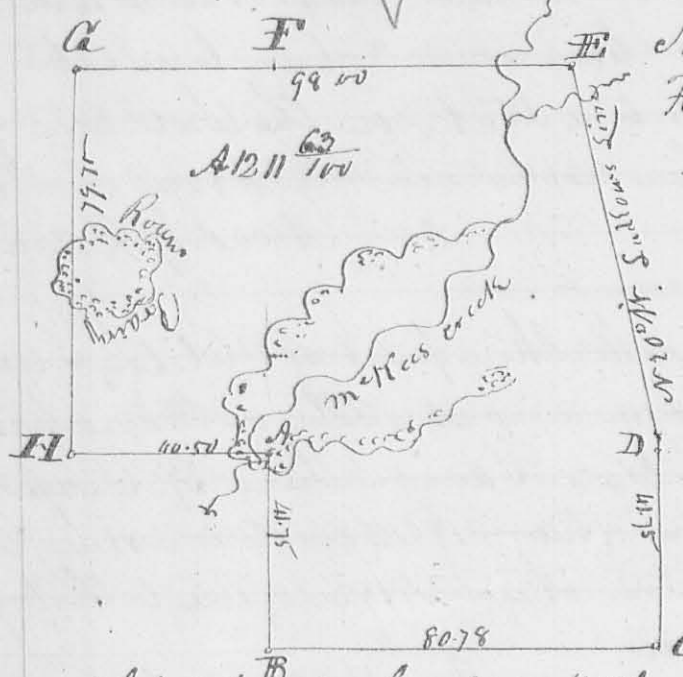
Saml Hopkins Co. S. C.

267

March 1837

N^o 372

(8406)



This plot represents the North half of S 25. & 4 R. 16 W. R. 2. East half of S 32. Same town and range. run at true Meridian - Present variation 40° E. " Sudden line 1° E. making its present bearing N 19° W.

Description of Corners.

- B. White Oak North 48 Links. Hickory 12 L. D. S 46° 11' 34 Links -
- C Hickory & L. D. S 46° 11' 15 Links, and Hickory 12 L. D. N 57° E 48 Links -
- D Stone N. E. Corner of S 25. the original bearing tree down -
- E. N. E. Corner of S 26. a White Oak S 46° 11' 22 Links, the other tree down -
- F N. E. Corner of S 26. a N. E. Corner to Park heart at C. Stone -
- H. White Oak 18 L. D. N 12° 43' 31 Links, and White Oak S 20° 34' 34 Links -

John W. Colvin

John B. Miller } ch. Cor.

Deed of Kin Co. Va. I. C. & Co

N^o 373

(8398)

Vance part of Metitam Survey N^o 990. W. for Gray. Beginning at Sugar & Buck Exp. (into down Str Corner to Henry Bend) and 25 acres lot thence N 78° 6' 100 poles to a stake thence S 12° 6' 114 poles to a black marked RR RR thence with the meander of Johnsons Mill Race S 85° W 22 2/10 poles to a stake thence S 14° W 11 6/10 poles to a stump thence S 43° W 36 poles to a sugar thence S 53° 34' W 10 3/10 poles to a White Walnut thence S 75° W 19 poles to a Buck Exp. thence N 82° W 13 6/10 poles to a Buck Exp. thence N 68° W 7 6/10 poles to a stake N 68° W 22 1/2 poles from a black Walnut thence N 12° W 139 5/10 poles. Cuts Creek at 2 poles to the beginning 80 acres. more or less. (No Calculation has made also for J. S. Linder. Beginning at the Black marked RR RR as above

them with said Johnsons Mile and with it
 Meander as before, and to the State 21/2 miles from the
 black Walnut. thence S 12 E 20 1/2 poles to a stake 53 1/2
 poles from 2 chemp from one end thence N 78 E 103 1/2
 poles to a stake. Comes to South Lane. thence N 12 W 46 poles
 crossing a Creek at 46 poles to the beginning. computed to
 contain 20 acres, more or less. and also for said Kind
 man. part of said Survey 12, beginning at a Beck
 and Lynn N. E. Comes to said 25 acres lot. thence S 12 E
 29 poles to a stake. thence S 78 W 54 poles to a stake in the center
 of a 2 1/2 rod road thence with said Road N 37 E 57 poles to a
 stake. in the N. line of Survey N. 9905 of which this is a part
 thence with said line N 77 1/2 E 9 poles to the beginning
 containing 7 acres 66 huns and 1/2.

March 17. 1837.

L. Hopkins Co. and Co.

N. 374

8407

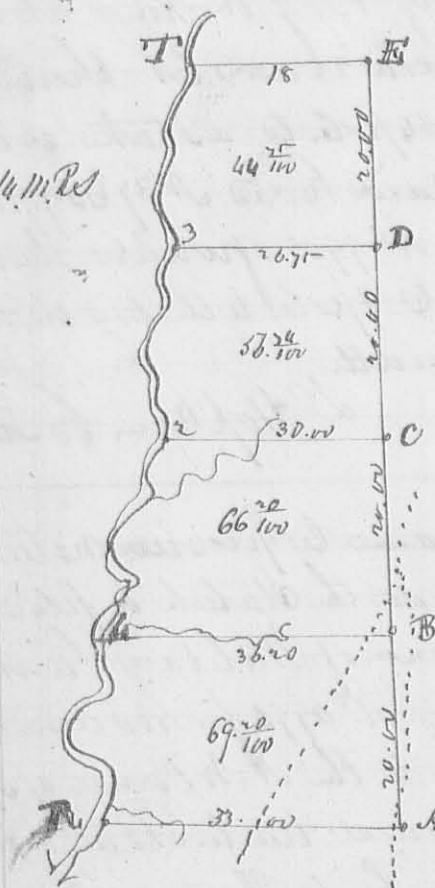
April 4. 1837. In pursuance to previous notice to the
 parties concerned. I proceeded under the Statute to plant Corner
 stones at the S. E. and S. W. Corner of Military Survey N. 5245
 being the N. E. 1/4 of Survey N. 4990 for 400 acres. in the name
 of White. as follows. went to the N. W. Corner of Survey
 N. 5245. in Suddlers line. the original tree, two Bir. Oaks, one
 cut down. stump about 18 inches high. Planted a stone near a
 trunk. Present Joshua Robb, Wm Carr marker, John Wilson
 John Han Ch Camien, James Carr. thence run S 19 E with
 Suddlers line the original call, for the Survey 195 poles, crossed a
 small drain at 2 poles, and one at 5 poles. Detroit Road at 98 poles.
 Sandusky Road at 140 poles. a small run at 162 poles to a Hickory
 6 inches dia. S 61 E 21 1/2 miles distant from a stone which I
 planted here. present the same individuals as above - then
 went to the N. W. Corner of Thomas Northingtons Survey
 N. 4299 at a stone formerly planted under Statute. thence run
 South 148 poles. Crossed a small branch at 60 poles and one at 130
 poles to some small hickies marks in a military corner. found
 some pieces of a Beck tree and appearance of a Beck,
 having formerly stood at this point. agreeing with the
 original call. (Nothing certain however, can be known

from present appearance, respecting the Corn. Spruce.
 to plant a stone here, in the westerly line of Northington's
 Survey. Present as above of Capt. George Hume, Tenn.
 and also Present George Seaman marks a Hickory 7. 10
 N 46 W 1/2 S and Black Oak 12. 10 S 23 1/2 10 1/2 Sinks
 D Hopkins Co. Sur. D. C. O.

A. 375

S 16 1/2 R 14 M. R. S

8408



This map represents S 16. 1/2 R 14 M. R. S.
 true meridian course, Present variation
 40. 1/4

Description of Corners
 A. S. E. corner of the section at the oak
 11. 10 N 49 E 20 links the other two down
 B. Forked Juniper 10. 10. Corner tree -
 C. Forked Hickory 18. 10 N 80 W 16 1/2 Sinks
 13. 10. Oak 8. 10 N 5 E 42 Sinks
 D. White Oak 10. 10 S 7 W 27 Sinks
 Dogwood 2. 10 N 21 W 26 "
 E. Wh. Oak 36. 10 S 64 W 27 Sinks the other down
 T. R. Oak 18. 10 N 18 E 33 S
 3. Hackberry 15. 10 S 18 W 30 S
 W. Beech 12. 10 N 19 E 14 S

2 - Wh. Oak 15. 10 S 11 W 47 S. Wh. Oak 20. 10 N 45 E 19 Sinks
 1. R. Oak 36. 10 S 14 E 7 S. Ash 7. 10 N 8 W 19 Sinks
 R. R. Oak 36. 10 N 60 W 12. Wh. Oak 15. 10 S 22 W 28 Sinks
 April 5. 1837
 Sur Hopkins Co. Sur. D. C.

A. 376
A.P.
1837

A. D. Seay
S. Seay & others

Survey for S. D. Seay part of Military Survey of
 as follows Beginning at a Red oak and dogwood. then
 N 70 W 86 poles to R. Oak, White oak & Hickory, the Red oak down
 then N 80 E 416 poles to a Wh. O. Hickory, both down, and White Oak
 then S 10 E 82 poles to a Stake in Prairie, then S 79 W 416 poles
 to the beginning. then returned on the last line 205 1/2 poles to 3 beech
 and White Walnut, and over a division line N 10 W 83 1/2 poles
 to a Stake in the north line of said lot - dividing the same into
 two lots of 109.2 acres each
 D Hopkins Co. Sur. S. C.

N. 377

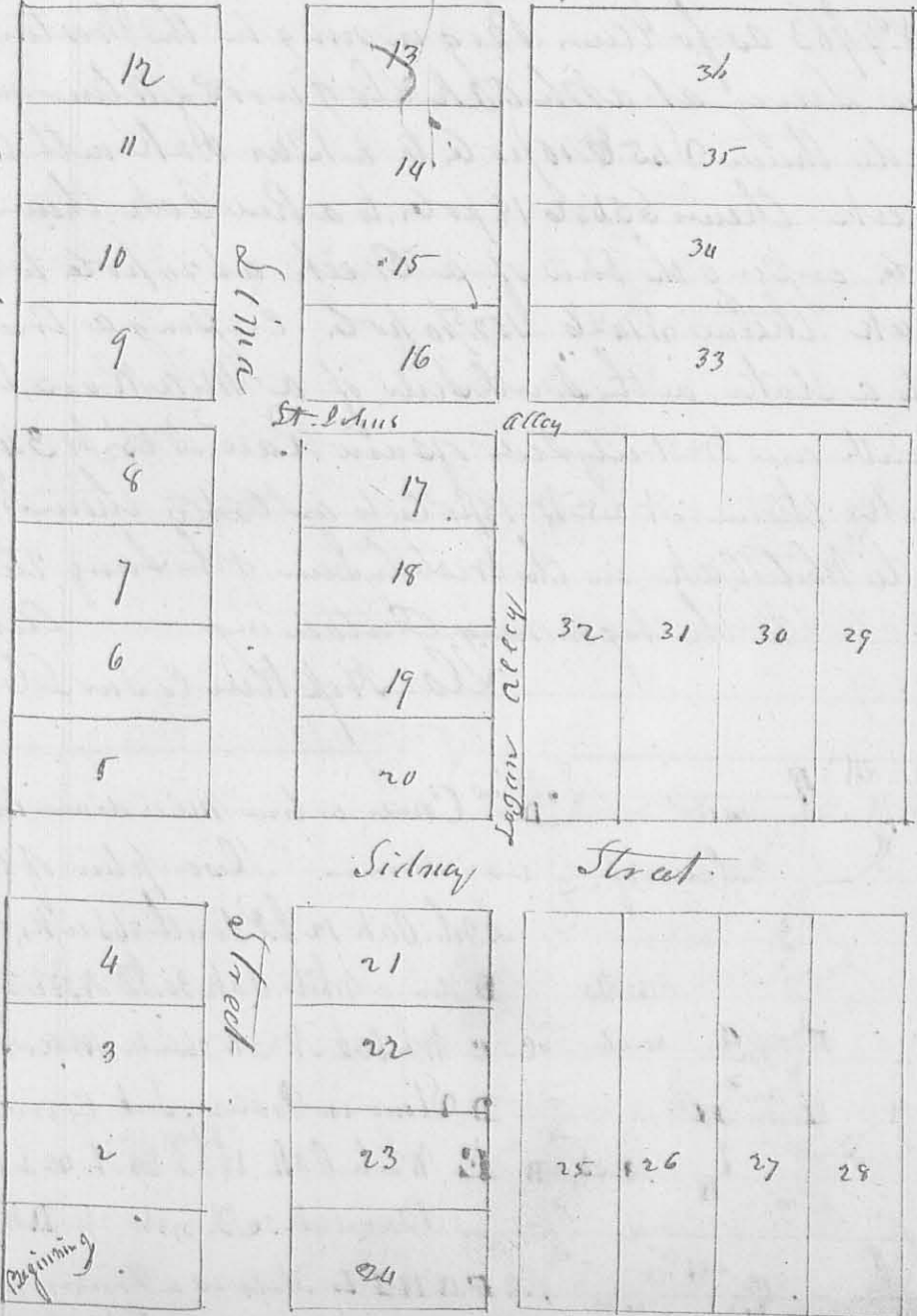
8409

Surveyed April 17. 1837 for R. E. Runclo part of Survey N. 4479 Northampton & N. 4492 Davin as follows. Beginning at the 30 mile Post in Liddon Lane, the Beginning Corner of Northampton said Survey, thence with Liddon Lane S 19 E on the base at 123 1/2 poles, 398 poles to 2 Chemp. 12. Oak & R Elm in a line more than N 75 E on pole to R Oak & Bur Oak, thence N 19 W 126 P. to a large Bl. Oak & Bur Oak, then N 71 E 127 poles, on the road at 34 poles to a Bl Oak, thence thence N 19 W 98 poles, on the road to Stakes in a field, thence N 14 W 98 poles to 2 Bl Oaks in a line, then S 52 W on pole to 2 Bur Oaks, thence N 19 W 119 1/2 poles to Bl Oak. Orig. Corner to Northampton said Survey, thence S 71 W 130 1/2 poles to the beginning Containing
 A. S. D. O. D. Hopkin Co. S. D. C. O.

N. 378

Surveyed April 27. 1837.
 9 lines
 Northampton & Davin

8410



Plot of 36 lots located in the corner of S. 2. 76. 5. R. S. E. E. of the north Property. Beginning in the corner of the base line (Northampton) thence more than N 75 E on pole to R Oak & Bur Oak, thence N 19 W 126 P. to a large Bl. Oak & Bur Oak, then N 71 E 127 poles, on the road at 34 poles to a Bl Oak, thence thence N 19 W 98 poles, on the road to Stakes in a field, thence N 14 W 98 poles to 2 Bl Oaks in a line, then S 52 W on pole to 2 Bur Oaks, thence N 19 W 119 1/2 poles to Bl Oak. Orig. Corner to Northampton said Survey, thence S 71 W 130 1/2 poles to the beginning Containing
 10 1/2 poles of the plot on the base line on the plot

Benjamin Cleveland Co. D.

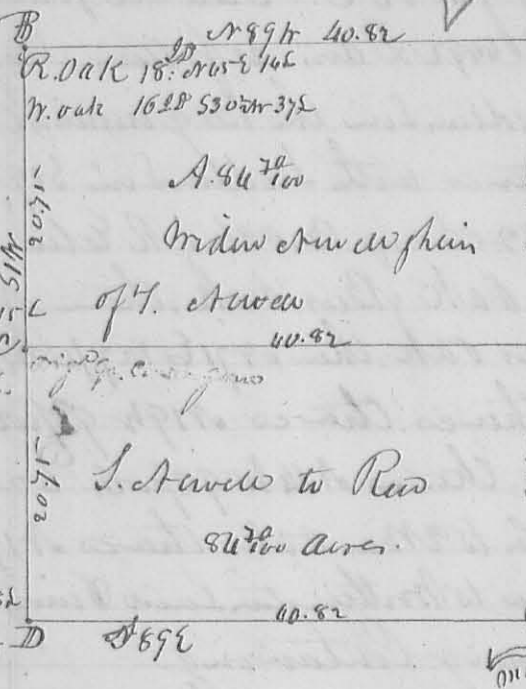
Stom

270

May 1837

N^o 379

W. Corner of the Section



Stems E. Comes to H. W. White
 This plat represents the survey and sub division of the NW 1/4 of Sec. 8. T. 5. R. 13. N. W. 20 made for S. A. New say. May 10. 1837.
 S. A. Hopkins Co. Sur. S. C.

8411

W. Oak 20 1/2 S 61 1/2 W 11 1/2
N. Oak 16 1/2 S 57 1/2 W 14 1/2

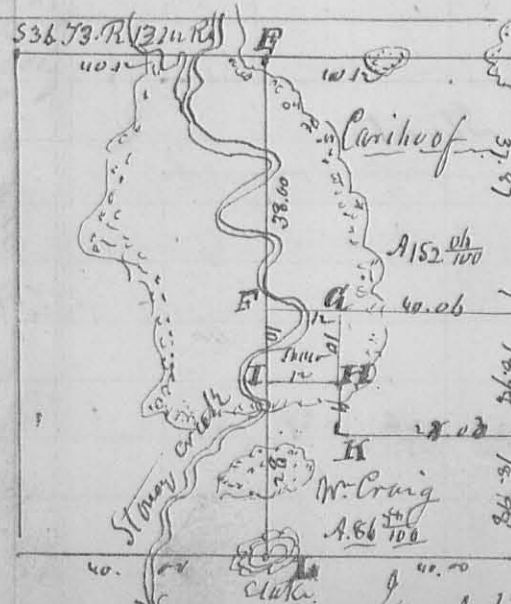
Stick on 16 1/2 S 46 1/2 W 38 1/2
W. Oak 16 1/2 S 15 W 38 1/2

N^o 380

Surveyed May 26. 1837 for Joseph Wallaw part of Military Survey N^o 9903 as follows. Beginning in the West end of a line survey at a W. Oak log wood & Elm on a hill side, thence S 45 E 40 poles to a Bur Oak with bend of a creek thence S 50 E 18 poles to a Red Oak thence S 75 E 30 1/2 poles crossing the bend of a Creek at 20 poles to a large White Oak thence S 14 E 152 1/2 poles crossing a Creek at 20 poles to a State on the south side of a Mill Race, thence on the South and West side of said Race N 65 W 34 poles to a State, thence N 25 W 18 poles to a State, thence N 80 W 48 poles to White Oak in the West end of the Survey, thence N 11 W to the beginning containing Acres.
 S. A. Hopkins Co. Sur. S. C.

8412

N^o 380



Stems E. Comes a true Meridian with 40 E variation - Description of Corners -
 A. W. Oak 12 1/2 S 26 S 1/2 W 26 S 1/2 W
 B. Stone & White Oak 30 1/2 N 33 E 26 S 1/2 W
 C. W. Oak N 83 W 26 S 1/2 W. Wide on 11 1/2 S 57 1/2 W 49 1/2
 D. Stone in Prairie. See C corner
 E. White Oak 18 1/2 E 40 S 1/2 W
 Bur. Oak 20 1/2 S 57 1/2 W 27 1/2 W. N. O. 15 1/2 S 46 1/2 W 32
 A. F. & H. L. State in a Prairie -
 S. A. Hopkins Co. Sur. S. C.

8413

June 1. 1837

June 9. 1837. ✓

271

N^o 381

8789

Survey under order of Court the following line of Military Survey N^o 4479 & 4492 to ascertain a line between G. Moots & and L. Scaman. as follows. Beginning at the 30 mile Post in Sullivan line. Beginning Corner to Thomas Worthington Survey N^o 4479, thence with the present bearing of said line S 19 E 247 poles, crossing Mackachuck at 123 3/4 poles to two white oaks, the Beginning Corner to Jeps Davis Survey N^o 4492, thence N 75 E 140 poles to 3 Hickories, thence N 29 E 180 poles, crossing a small branch at 104 poles to a stake in a Prairie - Continued 12 poles to 2 Bur. oaks, one of them now cut down, Corner tree called for in the Davis Survey, thence N 75 E 266 3/4 poles to the north line of Worthington Survey N^o 4479, then west to the N. E. corner of Worthington Davis Survey, the Corner tree named in the Original call, at a distance of 104 poles, one white oak yet standing, thence S 19 E 247 poles, crossing small branch at 85 poles, Mackachuck at 123 3/4 poles, marking the end of the line (N 75 E 266 3/4 poles,) at 234 poles to 2 Black oaks, and Red Oak, marked for Worthington J. E. corner, thence S 71 W 275 poles, on Worthington south line, marking a white oak, Corner between said Moots & Scaman at 144 poles, to a stake in a Prairie, at the end of 180 poles on the line N 29 E, ascertaining a Corner between said Worthington & Davis. Said Survey. Peter Kelly Hampton Burgess Ch. man

L. C. Hopkins Co. Surd G

N^o 382

8282

Survey June 10. 1837 for P. Kelly part of Military Survey N^o 6576 as follows, Beginning at G. Moots S. E. Corner part of Lums Survey. At 2 white oaks, thence N 69 E 885 poles to a small hickory, and Jack Oak, thence S 19 E 737 poles to 2 small hickories and white oak, thence S 28 W 44 poles to a Black Oak, Hickory and Cherry, Corner to Worthington Survey thence S 71 W 567 1/2 poles to 2 white oaks, South East Corner to Jeffrey William Land, thence N 20 W. 101 poles to the beginning. Containing 50 acres.

L. C. Hopkins Co. Surd G

N. O.

Stakes

437.0
437.0

Beginning
2 H. Oak Grub Long Corner.

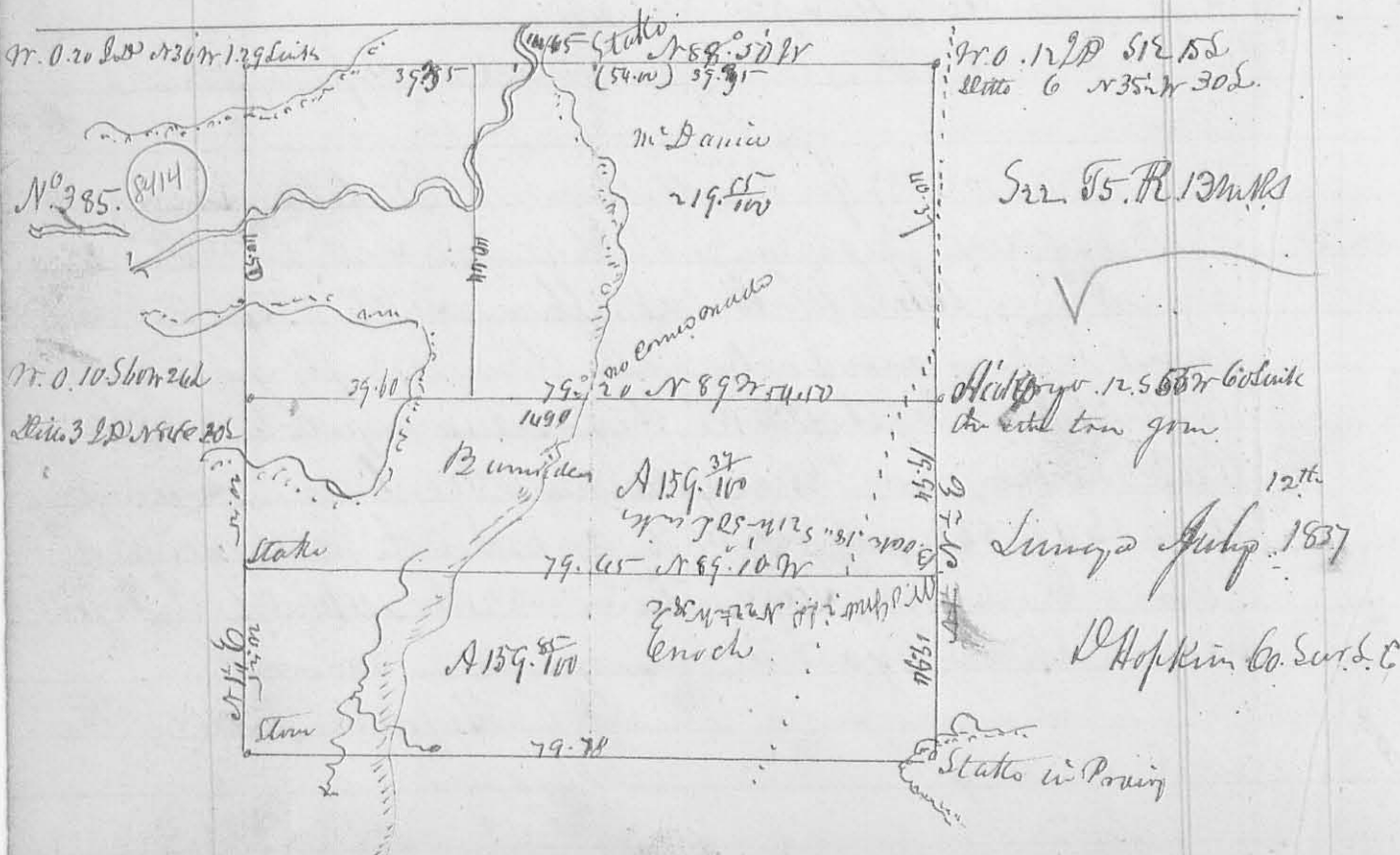
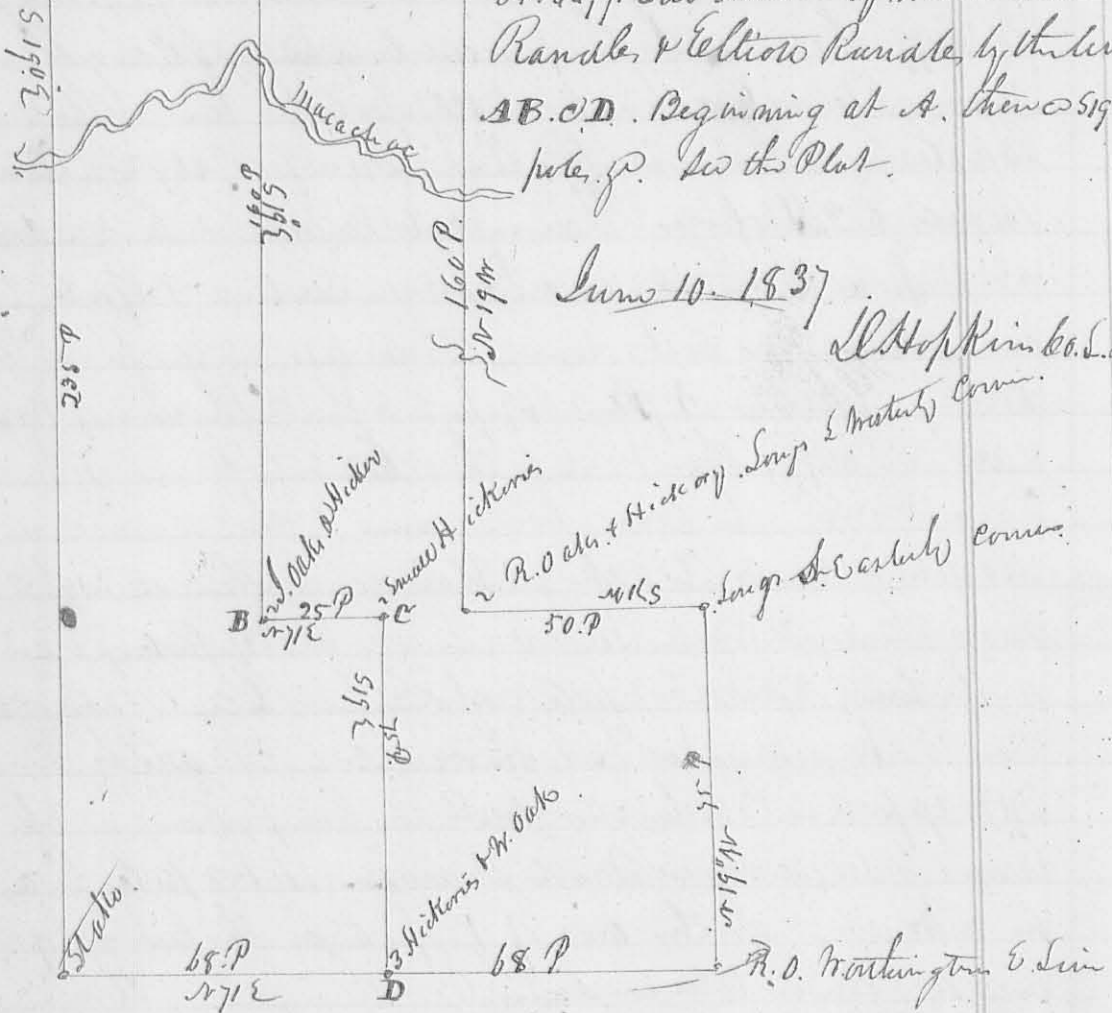
N^o 384

8393

This Plat represents a part of Metiten Survey
N^o 4479. Subdivided by me between E. M.
Randle & Elliott Randle by the line
A B. C. D. Beginning at A. then S 19 E 160
pole. p. See the Plat.

June 10. 1837

J. M. Hopkins Co. S. & C.



Surveyed July 12th 1837

J. M. Hopkins Co. S. & C.

Stake in Point

N^o 386

Surveyed July 10. 1837 for L^d R^t part of military Survey
 N^o 3195 as follows to wit: Beginning at a stem between a
 small logwood & Hickory in W^{est} line thereof 5136
 68 chains to 2 Ash & Red Elm thereon N 80 E 7 poles to a bunch
 of small water beads. thereon N 19 E 25 poles to a stake and a
 small hickory bearing N 28 W 15 Links distant. thereon N 58 E
 14 poles to a stem South 12 links from the last from one root
 thereon N 13 E 14 poles to a stem between two small hickories. thereon N 64 E
 N 49 W poles to the beginning. Containing 9 acres —

Dan Hopkins Co Sur. S. C.
 July 10. 1837

N^o 387

Surveyed Aug 7. 1837 for Wm R Miller pt Survey N^o 12181
 as follows. Beginning at the S. E corner thereof at 2 Becks
 (one down) thereon S 78 W 40 poles to 3 Becks thereon N 12 W
 16 poles to a Beech Hickory & ash. the ash gone. thereon
 N 78 E 40 poles to a stake in the East line of the Survey —
 thereon S 12 E 16 poles to the beginning. Cont^y 400 acres.
 Dan Hopkins Co Sur. S. C.

N^o 388

(8415)

Surveyed Sept 27. 1837 for Widow Culver part of
 Military Survey N^o 7288 as follows. Beginning at a stem
 N 52 E 82 poles from the westerly corner of the Survey. thereon
 N 52 E 106 poles to a Beech & Sugar tree. thereon N 38 E
 61 poles to a Beech Hickory & Sugar. thereon S 2 E 61 1/2
 poles to a stem in a Big wood. thereon with said Road
 N 38 W 63 3/4 poles to the beginning. Cont^y 42 1/2 acres.
 Also Surveyed 13 acres part of same Survey beginning
 as above. thereon with the Big road S 38 E 36 poles to a
 stem. thereon S 52 W 59 poles to 2 Becks & Ironwood. thereon
 N 38 W 36 poles to a stem. small Beech & Sugar in the
 original line of survey. thereon with said line N 52 E 59 poles
 to the beginning. Containing 13 1/4 acres.
 Dan Hopkins Co Sur.

274

N389

9447

*12052

Surveyed September 28, 1837 for David Scott Hittler,
 Survey No 6476 as follows - Beginning 2 Ash & 2
 Hickories NW Corner to Michael Rudolph Survey
 No 9902 thence N5°W 102 poles to a Run oak hick
 ory of Small Ash the Southeast corner to Walter Penn
 Survey No 10951 thence with his Line S78°W 214 poles to
 2 Red oak Small Run Oak & Hickory in Robert Line
 thence with said Line S24°30'E 102 poles to 2 Whitewoaks
 & an Ash thence N78°E 180 poles to the beginning
 Containing 124³/₄ acres.

Dan Hopkins Co. Sw. 46

N390

8290

Surveyed Oct 1837 for James Wall the N half of Sect
 4 T4. R13 M. R. 5 as follows Beginning at a Run
 Oak 12 Inches diameter N52°E 17 Links, a Stone in a
 State road thence N89³/₄°W 80 ch 50 L. to a Stone a Wh.
 Oak 20 I.D. S44°W 10 Links, thence S0°20'W 40 ch 62 Links
 to a White Oak 10 I.D. S77°W 12 Links and Hickory 8 I.D.
 N37°E 16 Links, thence the original q. corner, thence S89°30'E
 80 ch 75 Links to a Jack Oak 12 I.D. N84°E 31 Links, and
 Jack Oak 8 I.D. S7°E 35 Links in the East Line of the
 Section thence with said Line N40 chain to the beginning
 Containing 93²/₅ acres -

Dan Hopkins Co. Sw. 46

N^o 391

8416

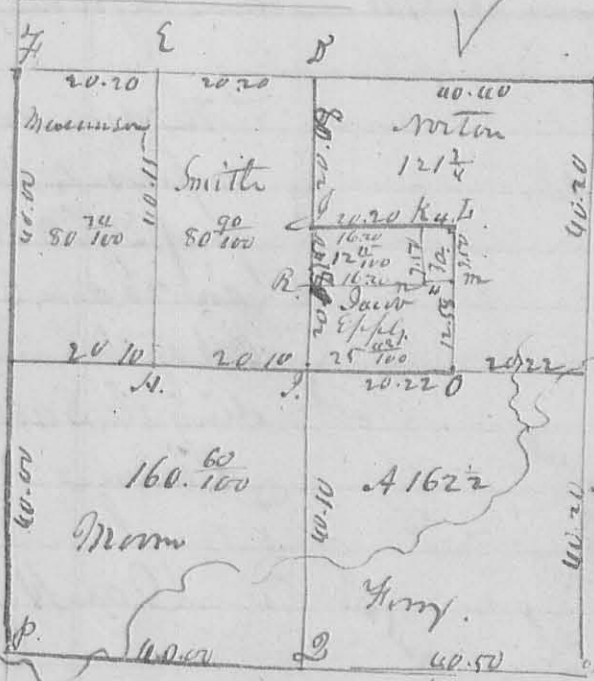
Surveyed for Pollock the NW. q. and part of the SW
 quarter of S34 T5. R13 M. R. 5 as follows. Beginning
 as in the foregoing Survey, thence with the Section Line
 South 60 chain to a Jack oak 12 I.D. N84°E 31 Links
 and Jack Oak 8 I.D. S7°E 35 Links thence S89°E 5 chain
 to a Jack Oak 8 I.D. N76°W 13 Links and Jack Oak
 South 8 Links, thence South 40 chain crossing a hand
 to a Jack Oak 8 I.D. N7°W 5 Links, and southerly point of
 a Rock bean S69°W 30 Links in the South line of the
 Section, thence with said Line S89°E 37 ch. 65 Links -
 crossing a Small branch to a Stone in a prairie

Center of said Section Six - thence North 80 ch 75 L 275.
 to a White Oak 2 1/2 D 572 W 30 Links, and a Stone in the
 N. Line of the Section, thence with said Line ^{W 1/2} 42 ch.
 65 Links, to the beginning. Containing $322 \frac{27}{100}$ acres.
 Oct 1837 D. Hopkins Sec. Sur. G. O.

N. 392

5369

Surveyed for Meetinghouse Lot near Peter Kelly Oct 1837
 Beginning with 3 chains South 30 feet from the N. E. Corner
 of S23.25 R 13 M. 5 at a White Oak 18 inches diameter S 53 E
 12 Links, thence South 2 chains to a black oak 3 inches diam
 57 1/2 Links, thence S 2 D. N. 69 1/2 Links, thence West 2 chains
 50 Links to a Hickory 2 in. dia N 52 E 5 Links, thence North 2 chains
 to a Hickory 6 in. dia South 6 Links, thence East 2 chains 50 L.
 to the beginning Containing one half acre.
 Oct 1837 D. Hopkins Sec. Sur. G. O.



b. The annexed plat represents the
 Survey and Subdivision of S26.49 R
 14 M. 1/2 for Henry Morris & others
 made Nov. 15 1837. The variation
 of the original line is 30 ft from
 then original Magnetic bearing
 the division line B. O. A. L. bears
 N 89. 00 W. The line D. J. B. bears
 N. 20 E. The other the same course.
 The Description of corners is as
 follows:

N. 393

3 acres
 for
 S. Clayton

A. A. Stone. D. Elm 10 S. D. N 62 25 E. R. O. W. D. N 75 W 10 Links
 B. Stone. E. N. O. 18 S. D. 53 42 29 L. N. O. 18 S. D. N 58 W 38 Links
 C. N. E. L. of Sect. 7. 130 0. Corner to D. Stake in a Prairie -
 F. Stone & White O. 22 S. D. S 4 W 110 L. J. White O. 15 S. D. N 75 W 20 L
 at M. R. K. Stone - I. 130.0 12 S. D. N 67 W 16. W. O. 5 S. D. N 11 E 18 Links
 J. W. O. 22 S. D. 57 2 W 54 Links. K. Plum Bush 3 S. D. 58 7 E 18 2 Links
 W. O. 22 N 2 W 54 Links. L. Hickory 1 S. D. 51 8 W 16 Links. M. 1 L. W
 N 14 W 29 Links - at D. Corner between S 25. 26. Stone. White O.
 now 8 L. D. West 12 Links. the other bearings true down -
 J. Culp. 5 morns ch. carr. D. Hopkins Sec. Sur. G. O.

8288