

4th Mo. (April) 11th 1825 Survey & 25th

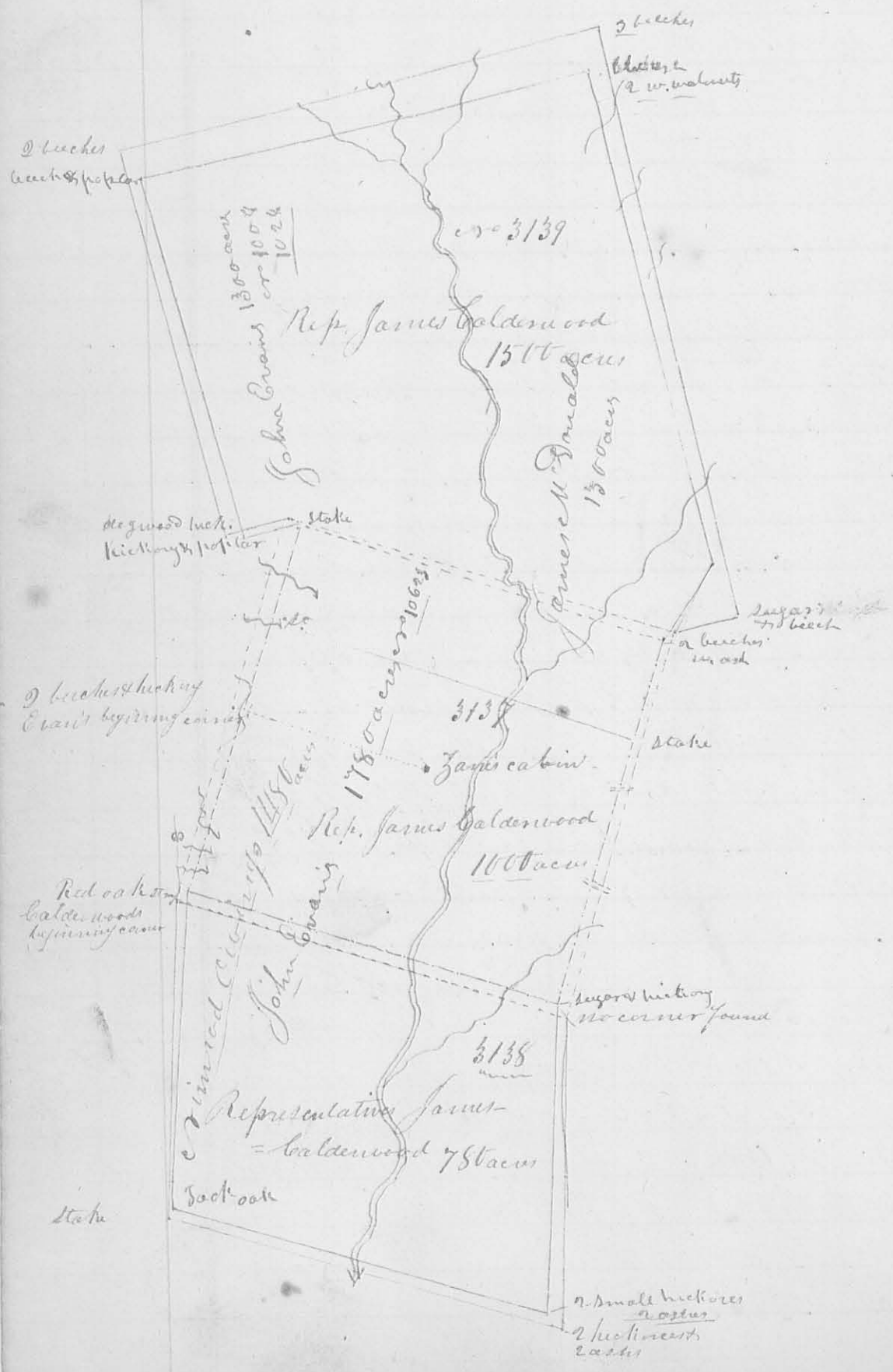
9188 26

containing original survey

The Lessee of Vinwood C. Wing
Plaintiffvs. { Lawson Curtis et. al.
DefendantsAnd The Lessee of James M. Donald
Plaintiffvs. { Jesse Garwood et. al.
Defendants.

In obedience to an order of survey to me directed from the United States 7th Circuit Court, Ohio District in the above case I proceeded on the 11th day of April A.D. 1825 to execute a survey agreeably to the directions of the parties interested, beginning at a block, admitted by the parties to be the place where the cabin stood in which Isaac Kane formerly lived on Mad River, thence $\text{N } 75^{\circ} \text{ W } 206$ poles (passing 2 beeches & hickory at 200, marked as a corner corresponding with Crain's beginning corner) to 2 beeches bearing some ancient land marks, said to be in Calderwood's line; thence $\text{S } 15^{\circ} \text{ W } 203$ poles (crossing a plain at 30 poles, a road at 40, a branch at 58, a drain at 88, one at 124, one at 180, passing 3 beeches at 197, 4 poles to the E. corner made by A. L. Hunt in 1817 corresponding with Crain's patent) to a red oak stump, claimed by the defendants to be the stump of one of the trees of his beginning corner, the tree having been removed some years ago, by the appearance of the stump, no other marks of proper corner trees here - There is an old well marked line from the point of beginning in this line to here, the dates of which appear to be various, some count 12, 16, & 21 years. From here to ^{the} point first mentioned in this line, and thence $\text{N } 15^{\circ} \text{ E } 200$ poles (crossing a drain at 17 poles, one at 88, a branch at 160 poles, to a place where the timber appears to have been much destroyed by hurricane and fire; some small sugar trees were found here much decayed; no corner found or line marks except on an ash at the corner marked on the upper bank; Crain's line made by Hunt was on the right from 6 to 10 poles distant. - thence $\text{N } 75^{\circ} \text{ E } 408$ poles (passing a stone and stone at 10 poles claimed for Crain's corner) crossing Mad River at 308 poles, again at 311, and again at 316 poles; Sugar camp branch at 346, a small drain at 360 - passing 2 beeches and white ash at 404 poles - 4 poles to the right, no corner found, some decayed sugar timber was found here

It no line was found coming to this place claimed by the Dept. thence S 15° W 103 poles crossing a drain at 18, a branch at 45, a deep hollow at 90, a spring branch at 128, a deep drain at 180, a deep drain at 220, a branch at 354, passing a sugar tree and hickory at 397, poles to the right hand corner made by Hunt corresponding with Evans' corner here. No corner found claimed by the Dept.



Thence $r 75^{\circ} W 268$ poles (cropping a branch at 82 poles, Macajac River at 175, a spring branch at 211, a mill race at 228, a road at 255 poles) to the beginning. (no line marks on this nor the last mentioned line) containing 1027 acres

Robert Marrison }
Benjamin Butler } *et al*

Note the lines shaded with red represent the recent survey and claims, the dotted lines represents the survey made by order of the court a direction of the parties. The depts. admitted that they are within the bounds of the p[er]ffs claims therefore they are not represented on the plat. I surveyed but one of the surveys on the diagram the others are laid down by the field notes of the original and recent surveys.

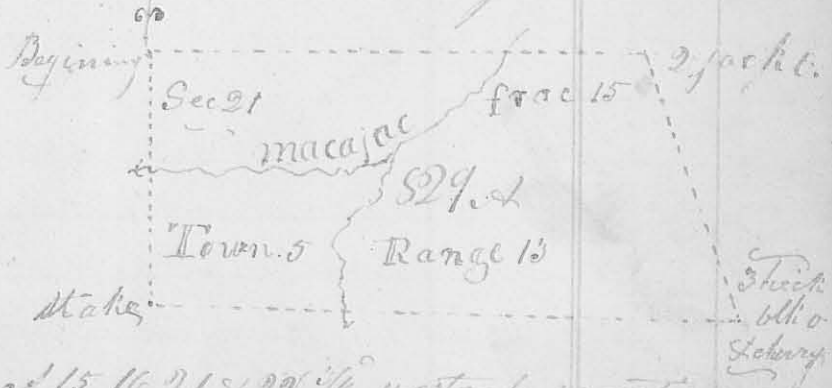
J. M. Marrison Surveyor
of Logan County

(8189)

10 Mo. Oct. 3rd & 4th 1825

Surveyed 829 acres of land for Benjamin M. Piatt and others, heirs of John H. Piatt dec. Beginning at a stake corner to sections 21, 22, 27 & 28 in Township 10.5 Range 13 E. M. R. thence between sect. 21 & 27 south (cropping Macajac at 163 poles) 261 poles to a stake in said line thence east $\frac{1}{2}^{\circ}$ westerly variation allowed cropping the south channel of Macajac at 144 poles 556 poles to 3 small hickories black oak and cherry bush in Sudlers line - thence

with said line $r 20^{\circ} W$ ($\frac{1}{2}^{\circ}$ westerly variation from the original line) 276 poles to a small and large jack oak at the corner of sect



15 & 16 - thence between sect 15, 16, 21, & 22 $\frac{1}{2}^{\circ}$ westerly variation from the original line, cropping Macajac at 92 poles & 62 poles to the beginning containing eight hundred and

29
 twenty nine acres, part of Sec. 21 and fractional sec,
 15 Town. 5 Range 13 E. of M.

Saml. Burnside }
 Thomas Hubbard } Cb. } Jas. W. Harmon
 Joseph Sewell marker } Surveyor of Logans Co.

10th Mo. Oct. 1st 1825

46A

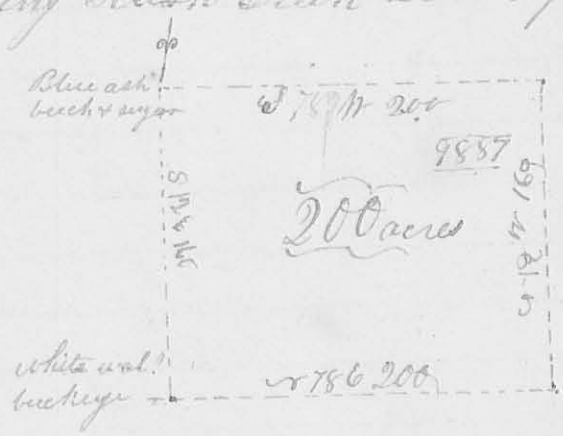
From a division line between Henry Robinson and Alex. Burnside. Beginning in the east line of Sec. 28 Town. 5 Range 13 E. of M. 80 poles north of the corner of Sec. 21, 22, 27 & 28 in said Town & Range thence east, $3\frac{1}{2}^{\circ}$ westerly variation allowed, to the east line of Sec 22 to 2 black oaks in said line

Jas. W. Harmon S. & L. C.

11th Mo. Nov. 11th 1825 Survey No. 47 (8190)

Surveyed 200 acres of land for James Taylor Beginning at the N.W. corner of survey No. 9887 north of the Penn-
 sylvania treaty line, a blue ash buck and sugar tree
 thence $S 72^{\circ} E 160$ poles crossing a branch at 106 poles
 to a white walnut haw-bush and buckeye. Thence
 $S 75^{\circ} E 200$ poles crossing Rush Creek at 52 poles to
 two bushes and
 hickory, thence

$S 12^{\circ} W$ crossing
 a small branch
 at 60 poles, 160
 poles to two bushes
 and sugar tree in
 the north line of



said survey - thence with said line and course thence
 $S 78^{\circ} W 200$ poles crossing Rush Creek to the begin-
 ning, containing 200 hundred acres in the S.W.
 corner of the original survey No. 9887

Thomas & Green }
 Hilthiah Rosebrook } Cb. } Jas. W. Harmon
 Henry Hendrickson marker } Surveyor Logans Co.

12th Mo. Decr. 7th 1825

Survey no 45

Surveyed 205 acres of land, for Jose H. Garwood. Beginning at three beeches in Hollinsworth's lower line and N.E. corner to John Gratton's survey no 4606. thence with the easterly line of said survey S 38° E 160 poles to a haw thorn, bush, elm, and buckeye - thence S 52° W 205 poles (cropping flat branch at 118 poles, again at 110, & Darby's creek at 200 poles) to a beech and two sugar trees, in Gratton's south line. Thence S 38° W 160 poles to a stake in Hollinsworth's said line - thence with said line N 52° E 205 poles (cropping Darby's creek) to the beginning two hemlock - dred and five acy



part of Gratton's survey no 4606 on Darby's creek - at the same time made a division line through the 205 acres beginning at 3 elms in the southerly line 102 1/2 poles from either corner thence N 38° W 205 poles to 2 beeches in the northerly line making 2 equal lots thereof.

Joshua Painter }
James Hedges } C.L.
Jose H. Garwood marker }
Ja. Williamson S.L.C.

12th Moth Decr. 12th 1825

Survey no 49

Surveyed 222 1/2 acres of land for the heirs of Thomas Wilkinson as hereafter mentioned Beginning at a red oak and white in the west line of Alexr. Ch. Dandridge's survey no 4477, and S.E. corner to Hezekiah Morton's survey no 4498 on the waters of Mad River and Miami - thence north, with the line of Morton's survey 55 poles (passing white oaks at 26 poles comes to Dandridge's said survey) cropping a branch at 180 poles and again at 210 poles to a white oak, beech and cherry tree (the cherry tree is fallen) N.E. corner to Morton's

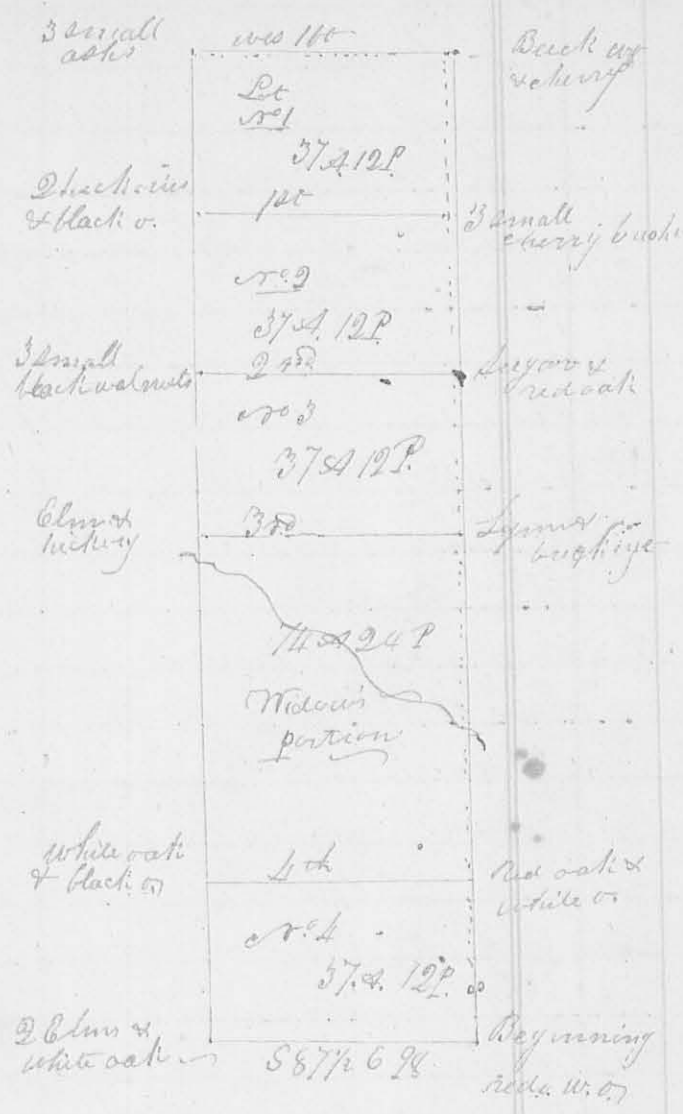
survey - Thence west 100 poles to 3 small black ash in a bog, thence south 356 poles (crossing a branch at 260 poles) to 2 elms and white oak & M. corner to Norton's survey - thence S 87 1/2 E 25 poles to the beginning containing 222 1/2 acres part of Norton's said survey. There is 1/2° westerly variation from the original line.

The 1st division line begins at 3 small cherry trees, 2 from one spot, in the east line of this survey 593 poles south from the c.r. & corner - thence west 110 poles to 2 hickories and a black oak -

The 2nd begins at 3 small black walnuts in the west line - thence east to a sugar tree and red oak in the east line -

The 3rd begins at a lynn, buckeye and stone in the east line - thence west to an elm and hickory in the west line -

The 4th at a white oak and black oak in the west line - thence east to a stake, large red oak and small white oak in the east line - each lot containing 37 acres and 12 poles - except the widows portion in which there 74 or 24 poles.



George M. Collock } C. C.
 Silas Bayly }
 George Wilkinson marker

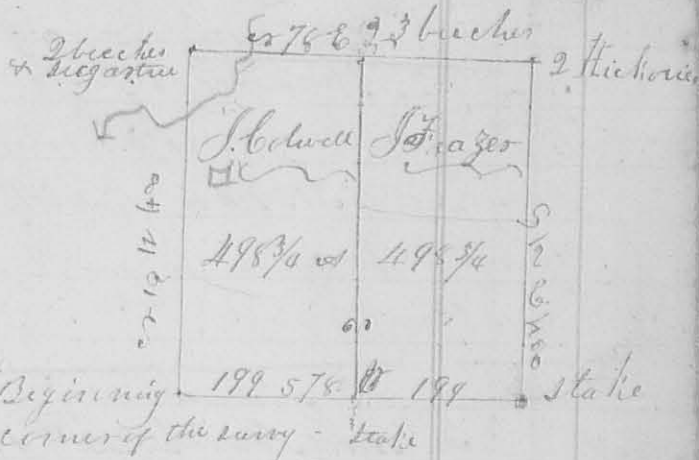
Ja. M. Harrison }
 Surveyor Logan C. C.

12th Mo. Dec 17th 1825

Survey No 50

8194

I made a division of survey No 9949 north of the green river
 treaty line, for James Caldwell and James Frazer, of Virginia.
 Beginning at a stake in
 the south line of the sur-
 vey 199 poles from either
 corner thence N 75° 11' 40"
 poles to 2 beeches in the
 north line of the survey
 dividing it into 2 equal
 parcels



James Bowyer }
 William Bowyer } (Ck.)

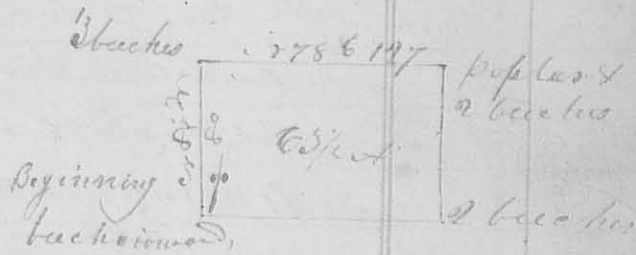
James McMillan Surveyor

1^{mo} (Jan) 3rd 1826

Survey No 51

8195

Surveyed 6 1/2 acres of land for Andrew Willson - Begin-
 ning at a buck, ironwood, and sugar tree in the south
 line of William Cochran's Survey No 3236. Thence N 87° 17' 50" poles
 to 3 beeches, corner between said Willson and Burnside, thence
 N 77° E 127 poles to a poplar and
 2 beeches in the east line of
 said survey, and on the bank
 of a branch of Mill Creek
 thence with said line S 10° E



80 poles to 2 beeches, an original corner of the survey
 thence with the original line S 79° W 128 poles to the
 beginning containing sixty three & half acres in the
 S. E. corner of Cochran's said survey James McMillan S.S.C.

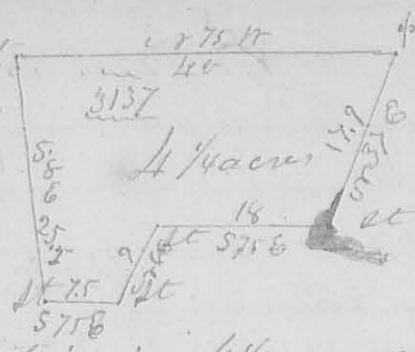
1^{mo} (Jan) 14th 1826

Survey No 52

8188

Surveyed 4 1/2 acres of land for Obenizar Jane. Beginning at
 a large sugar tree, S. E. corner to John Bishop's land, thence
 with the south line of his land N 75° 11' 45" poles
 to a stake on the east side of the Sandusky road
 thence S 8° W 25.5 poles to a stake on the same side of
 said road thence S 75° E 75 poles to a stake, thence N 46°

with 6 poles to a stake, thence S 75° E 18 poles to a stake
 on the west side of the road from
 John Bishop's to
 Jamesfield, thence
 N 37° E 17.9 poles
 to the beginning containing 4 1/4 acres & 24 poles part of
 Survey No. 3157 on Mad River



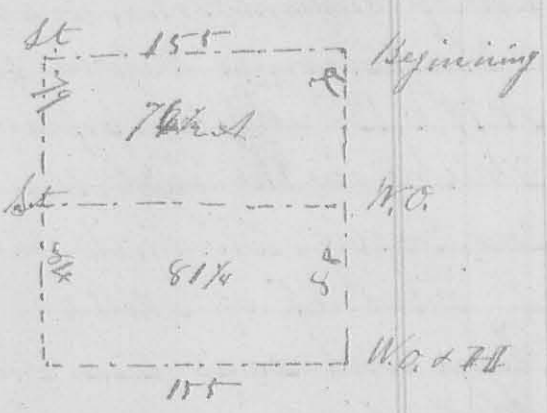
Saml. Gann
 Jonathan Pennel } Cb

A. W. Mearns
 S. L. C.

3rd mo. March, 22nd 1826. Survey No. 53

(8196)

Surveyed for James Brown, the N.E. q. of sec. 10. T. 4 R.
 13 E of the Miami, beginning at the corner of sec. 4, 5
 10 & 11 original bearing trees a "white oak 20 inches in diam.
 - eter S 44° W 20 links dist. a black oak 24 in. in diam. S 63° E
 17 links dist. (the white oak is cut down), thence between
 sec. 4 & 10, 168 poles to the original q. sec. corner a "white oak
 12 in. in diam. S 77° W 12 links
 a hickory 10 in. in diam. N 37° E
 20 links dist. then returned,
 54 poles on said line and
 marked a white oak 26 in. in
 diam. N 41° W 13 links dist
 thence west, allowing one degree
 easterly variation, 155 poles



and set a stake in a field; thence N 79° poles to the
 north line of said sec., thence with said line, allow-
 -ing 1° easterly variation, 155 poles to the beginning thus
 ascertaining the contents of said q. sec. and dividing it
 into two unequal part of 76 1/2 ac & 8 1/2 ac each

Lauris Herman } Cb
 Charles Brown }

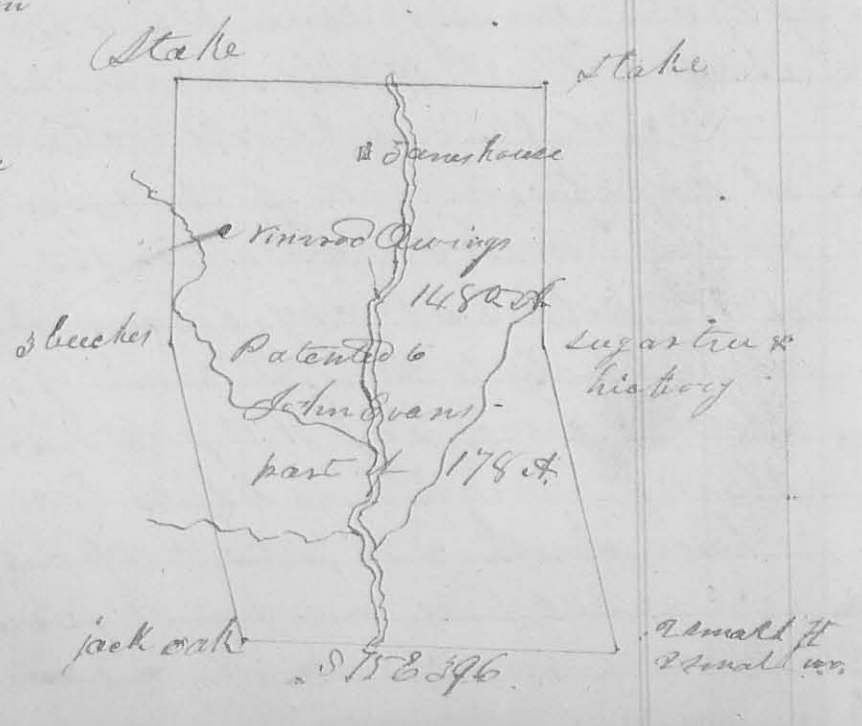
A. W. Mearns S. L. C.

8188

June 15th 1826, Survey N^o 54
 7th Circuit Court of the United States, District of Ohio
 The Estate of Nimrod Owings Plaintiff
 vs.
 Lanson Curtis et. al. Defendants } In Execution

In pursuance of an order of survey from the Court aforesaid, to me directed and the notices herewith sent (the parties being present,) I proceeded on the 15th day of May A^d 1826 to the lands in controversy between the parties. Beginning by direction of the Pltff's Attorney to survey his claims by virtue of a deed of conveyance from John Evans, the patentee, to Nimrod Owings, dated the 23rd of April 1823, being part of a tract of land containing 1780 acres or thereabouts, granted to the said John Evans by James Monroe President of the United States, by patent bearing date the 15th day of November 1821 - beginning for the same at 2 bucky and hickory or 75th N 200 poles from the south west corner of the house in which Isaac Zane lived in 1812 and until his death, now called Zanesfield, which corner is proved by the depositions of David Chapman herewith returned and Aaron L. Hunt herewith returned, (see pages from one to eight, the same being the beginning corner to Evans' patent, running thence S 15^o W 198 poles, crossing a branch 3 links wide at 10 poles, a road at 20, a branch 20 links water at 66, one link water at 98, crossed it again at 103 poles, a bend of the large branch 106, to 114, a Spring branch 2 links water 162, a branch 6 links water at 170 poles to 3 bucky, corner to Evans' patent, found them 3 poles to the right hand, from which a red oak stump bears S 47^o W 10 poles & 18 links, and from this stump marked on 4 sides bears S 75^o E 5 poles distant, thence South 320 poles, crossing a branch at 72 poles one at 204 poles, to a small jack oak (now down, marked, an other corner to Evans' patent Evans'.

25
 Southwesterly corner corner thence S 75° E 396 poles, ²⁵crip-
 -ing a road at 36 poles, Mad River from 166 to 174 &
 a spring branch, near its head, at 240 poles to 2 small
 hickories and 2 small white oaks, Southeasterly comes to
 said Evans' patent; Thence north 320 poles, at the ter-
 -mination of 28 poles 3 elms marked as a corner bear
 S 76 1/2° E 8 poles distant, at 176 cropped a spring branch,
 to a sugartree and hickory, marked about 1817 from
 this corner 2 red elms standing near together bear S 75 1/2° E
 3 poles, a cherry tree and hackberry bear S 78 1/2° E 5 poles dist
 and 3 white walnuts growing from one root, and buck-
 -eye bear S 75° N 5 poles distant all marked as corner
 -trees and appear about of the same age of Evans'
 corner tree - Thence S 75° E 276 poles, criping at
 branch, 20 links water at 174 poles a road, 200 at hand
 with steep banks at 220, and Dickinson's Spring branch
 at 271 poles to a stake, thence S 75° N 396 poles, criping of
 Mad River, and a road to a stake in the original line,
 Thence S 15° N 78 poles criping a branch 3 links water at
 74 poles 74 poles, to the beginning, estimated to contain
 1480 acres. - I certify that ^{the} line mentioned by me in
 my former return in these words to wit "to 2 beeches,
 bearing some ancient land marks, said to be in Cal-
 -derwoody line" which 2 beeches are in the same the
 same line mentioned by James Galloway in his
 deposition deposition
 herewith returned, in
 his answer to the 1st
 interrogatory put to him
 which answer is in
 these words to wit
 "In the year 1809,
 I think, I made a
 further search to
 find the Southwesterly
 corner of survey no
 2107 by running.
 S 75° N 200 poles



35
 from James house above mentioned, where I found a line, that appeared to have been run and marked 3 or 4 years previously, which I followed N 15° W 200 poles where I found some marks on a beech tree but no trees marked as corner". - I also certify I laid down in my former return at the request of the defendants from a field connection which I then had in my possession, the original of which was made by Walter Owen, the claimer of the representatives of James Calder = woods surveys cr 3138 of 780 acres and cr 3139 of 1500 acres, but that I did not actually run any of said surveys except those of the 1000 acre cr 3137.

Note. - The foregoing diagram truly represents the Plff's claims, and I believe the persons named in this case are within the limits of the Plff.

Robert C. Harmon	} -66.	James McKernan
James Watkins		Surveyor of Logan County.

T Survey No. 35

(B188)

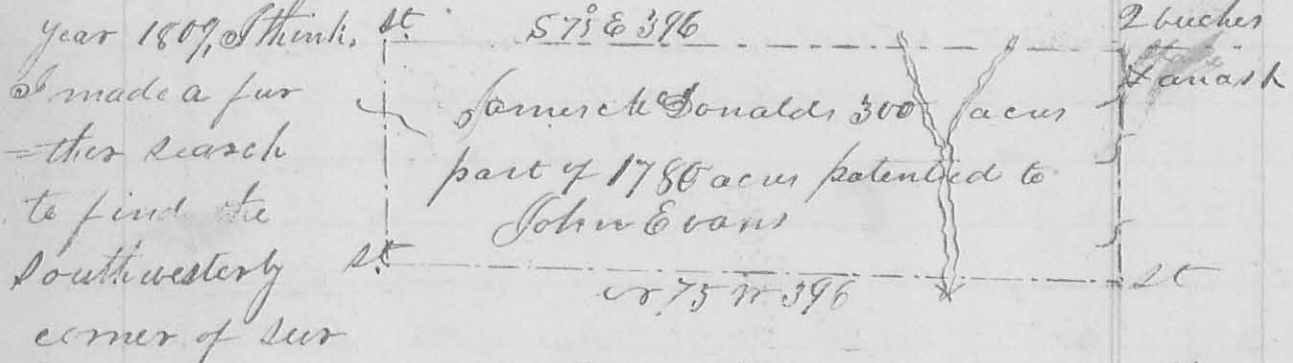
7th Circuit Court of the United States, District of Ohio,
 The Estate of James McDonald Plff.
 vs. } In Ejectment

Isaac Zane et al. Dfts.

In ^{presence of} ~~presence of~~ an order of survey to me directed from said Court, and the notice herewith returned, both parties being present, I proceeded on the 15th day of May 1826 to survey the land in controversy between the parties; Beginning by direction of Plff's attorney to survey his claim, by virtue of a deed of conveyance from John Evans, the patentee to James McDonald dated the 23rd day of April 1824; being part of a tract of land containing 1780 acres, granted unto the said John Evans, by patent, bearing date the 13th of November = ber 1821; beginning for the same at 2 beeches and white ash, north east corner to said Evans Survey cr 1042's, thence, reversing a line thereof, N 15° W 120 poles crossing a spring branch, 2 links water at 16 poles a branch

7 links water at 43 poles, and a branch 2 1/2 links water, high steep banks at 86 poles,) to a stake corner to a lot or tract of rimmed Owing's land, conveyed to him by John Evans thence with a line of said Owing's land N 75 W 396 poles (crossing Mad River and a road to a stake, north west corner to said Owing's land and in the line of the original survey, thence N 88 E 120 poles (crossing a spring branch 2 links water at 8 poles a branch 7 links water at 74 poles) to a stake north westerly corner to said Evans patent thence S 75 E 396 poles to the beginning containing 300 acres

I certify that the line mentioned by me in my former return in these words to wit "a to 2 bucker bearing some ancient land marks, said to be in Calderwood's line" which 2 buckes are in the same line mentioned by James Galloway jnr in his deposition here with returned, in his answer to the 1st interrogatory put to him, which answers in these words to wit, In the



by N 31 1/2 W by running N 75 W 200 poles from James house above mentioned, where I found a line that appeared to have been run and marked three or four years previously, (which I followed S 15 W 200 poles, where I found some marks on a buck tree, but no trees marked as a corner. I also certify that I laid down in my former return, at the request of the defendants, from a field connection, which I then had in my possession, the original of which was made by Walter Durin, the claims of the representatives of James Calderwood N 31 1/2 E of 780 acres and N 31 1/2 W of 1500 acres, but I did not

not actually run any of the lines of said survey³⁸
of Calderwoods except cr^o 3137 of 1000 acres.

note. - I believe that the persons named in this
cause are within the Pltff's bounds, and the fore-
going plat represents his survey.

Robert M. Harmon^{Plt.}
James Matthews

May 15th 1826

Ja. M. Harmon
C. C.

Surveye^r No 56

7th Circuit Court of the United States, District
of Ohio.

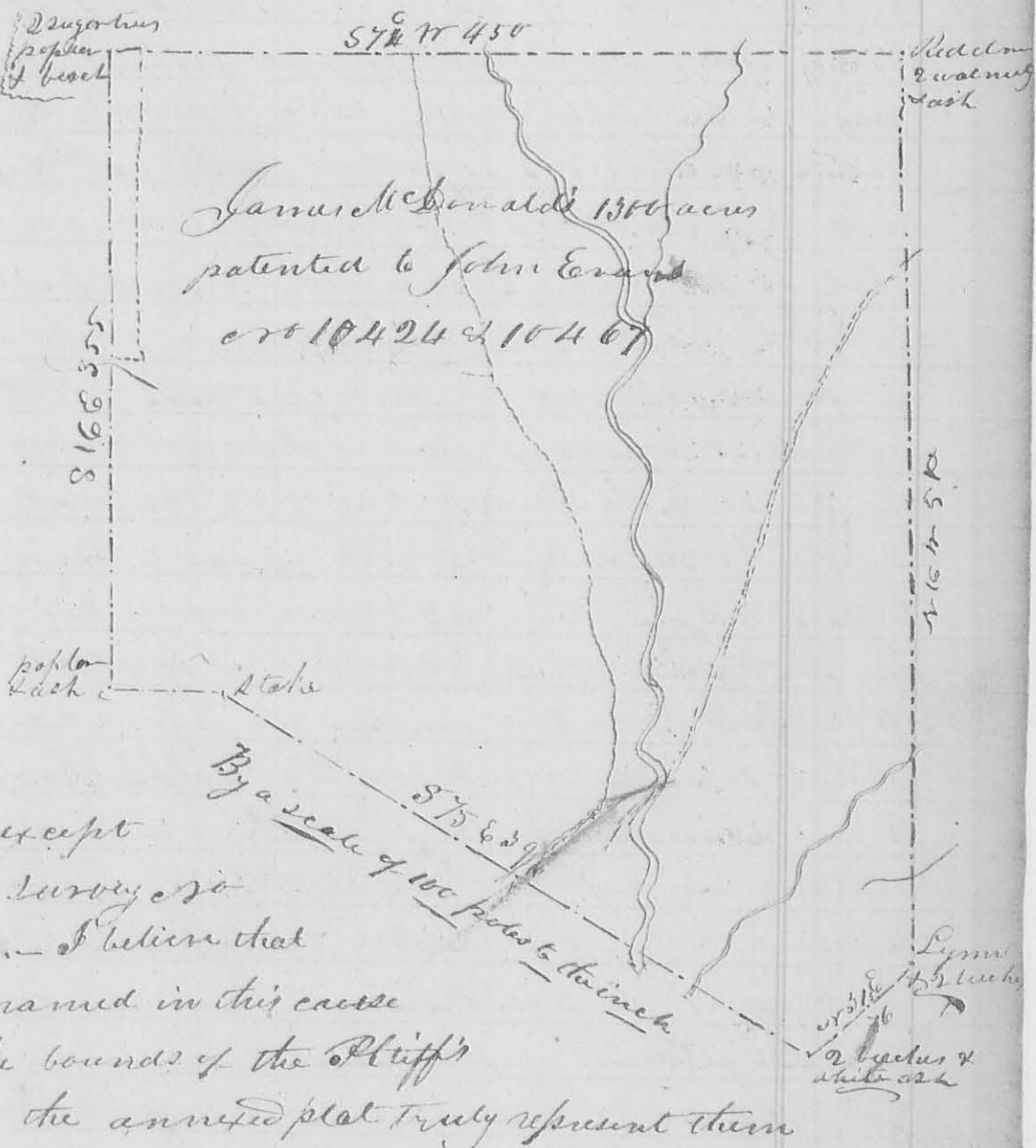
The Lessee of James McDonald Pltff. }
vs. } Ejectment
Jesse Gaswood et al. Defendants

In pursuance of an order of survey to me directed
from said Court, and the notices herewith returned,
both parties being present, I proceeded on the 15th day
of May 1826 to survey the land in controversy between
the parties, beginning by direction of Pltff's Attorney
to survey his claims by virtue of a deed of conveyance
from John Evans, the patentee, to James McDonald
dated the 25th day of April 1824, it being a tract
of land patented to the said John Evans, by James
McNroe, president of the United States, by patent
bearing date the 13th day of November 1821 containing
1300 acres cr^o 10424 & 10467. Beginning at 2 beeches
and white ash the north west corner of the said
John Evans' survey cr^o 10423 of 1780 acres. Thence
with the lines of said Evans' survey and patent
cr^o 10424. - commencing with the second line thereof
cr^o 31 1/2 E 76 poles, (crossing a small drain at 82 poles)
to a cypress and 2 beeches southeasterly corner to said
Evans' patent, thence cr^o 16 N 510 poles, (crossing the dry
channel of a branch, a branch 12 links water at

116 poles, a drain at 290, a deep drain at 310, a road
 384, and a small branch at 446 poles) to a red elm
 white ash, a small white walnut, and a black
 walnut, and a small blue ash, northeasterly cor-
 = ner to Erwin's said patent; thence S 78° W 450 poles
 (cropping a spring branch at 86, a state run for links
 water at 99, Mad River at 263, a road at 315 a
 small branch at 374, Spences' east line at 430
 poles to 2 sugar trees, poplar and birch all small
 and on the east side of a deep drain, or path
 = or spring branch, westerly corner to said pat-
 = ent, thence S 16° E 355 poles (cropping the south line
 of Charles Spences' survey no 758, 20 poles west of
 a lynn, ash, and red oak, S.E. corner, to said survey
 a spring branch at 199 poles) to a poplar and ash
 south westerly corner to Erwin's said patent; thence N 74°
 (E 65 poles (cropping a small branch at 27 poles) to a
 state, or N. W. corner to Erwin's survey no 104 2^d. — This in-
 = ber has been much destroyed here by stormy
 thence S 75° E 396 poles, (cropping a road, Mad River
 and a branch) to the beginning, (this line was not run
 by me) — I certify that the line mentioned by
 me in my former return in these words, to wit
 "to 2 bushes bearing some ancient land marks,
 said to be in Calderwood's line," which 2 bushes are
 in the same line mentioned by James Galloway
 jun in his deposition herewith returned, in his
 answer to the 1st interrogatory put to him, which
 answer is in these words, to wit: "In the year 1859,
 I think, I made a further search to find the south
 = westerly corner of Survey no 310⁷, by running
 or 75° W 200 poles from Tanis house above mentioned
 where I found a line that appeared to have been
 run and marked there, or four years previ-
 = ously, which I followed S 13° W 200 poles, where I
 found some marks on a buck tree, but no tree
 marked as a corner." &c — I also certify that

I laid down, at the request of the defendants from a field connection which I then had in my possession, the original of which was made by Walter Dunn.

The survey claimed by the representatives of James Calderwood is 3138 of 780 acres & survey is 3139 of 1500 acres, but that I did not actually run any of the lines of these surveys except the 1000 acre survey is 3137 - Note - I believe that the persons named in this cause are within the bounds of the Plaintiff's claims, and the annexed plot truly represent them



Robert Harmon }
James Watkins }
do. May 15th 1826 }
G. W. Harmon }
G. Surveyor }
G. Surveyor

United States 7th Circuit Court, Ohio District,
 The Lessee of James McDonald Plaintiff
 vs.
 Isaac James and others Defendants } Ejectment
 The same Plaintiff vs.
 Jesse Garwood and others Defendants } Ejectment
 The Lessee of rimrod Owens Plaintiff }
 vs. Lanson Carter and others Defendants } Ejectment

Pursuant to orders of survey from the said Court to
 Run out by the P'tiffs in the foregoing cause, and after
 previous notices having been given by the P'tiffs. Proceed-
 ed at the request of the defendants (the P'tiffs. having sur-
 veyed under said orders and notices,) the attorney and
 agent of the P'tiffs both being present, to survey the
 lands in controversy as follows to wit: May 17th Begin-
 ning at a red oak stump designated on the following
 plat by the letter A, claimed by the defendants to be
 the south west, or beginning corner of the Representative
 of James Calderwood's survey No 3137 of 1100 acres and
 north west corner of said Calderwood's survey No 3138
 of 700 acres, the stump being at the place pointed out
 to me by John Story and referred to in his answers
 to the 5th, 6th, 7th, 8th, and 9th questions in his deposition
 on pages 9 & 10 of the depositions herewith returned
 [to the clerk's office] by me in the above causes; also the
 place pointed out to me by Ralph Knox, and referred
 to in his answers to the 1st and 2nd questions in his dep-
 ositions on page 11 of said depositions; and also the same
 place pointed out to me by William Asher, and refer-
 ed to in his deposition in said causes, on pages 12
 and 13 in said depositions, running thence south
 320 poles, (crossing a spring branch & links water at
 57 poles, a spring branch at 194 poles, a branch
 links water at 212 poles, passing Belms, and bur oak
 at 260 poles, represented on said the following plat
 by the letter O, easterly corner to John Jalloway's
 survey No 1144, and north corner to James Denny's
 survey No 4957,) to an open place, designated on
 said plat by the letter D, where all the timber is
 small; but few saplings more than 25 feet high
 the smaller growth is hazle and thorn bushes
 very much like places where there have
 been Indian towns. - Thence S 75° E 408 poles
 (crossing ~~the~~ ~~road~~ ~~at~~ ~~at~~ ~~road~~ at 45 poles, pass

-ing a walnut and elm at 110 poles, with old line
 marks, block $\text{N}^{\circ} 5$ came from this walnut, - crossing
 Mad River at 170 poles, - passing two dog woods mul-
 -berry, and white oak at 260 poles, designated on
 said plat by the letter P, east corner to James Denny's
 said survey and corner to Walter Denny's survey N°
 9592, 9618, and 10075, a hickory and white oak at
 348 poles, designated on said plat by the letter Q
 corner to Denny's said survey, and corner to Thom-
 -as Parker's survey N° 4497, to an ash, designated on
 said plat by the letter C, which ash has been down
 for some years past; ^{found} on one side 2 marks in a
 line, and on another one mark on the trunk
 of the tree, the bark below this was broke off and
 lying on the ground in small pieces: no other
 marks were found on the ash (see the bark), an old
 hickory stump stands $\text{S} 62^{\circ} 11' 23''$ links. links dis-
 -tant, and a hickory $\text{N} 57^{\circ} \text{E}$ 1 pole distant which
 is marked as a line tree, an elm and red oak stands
 southwesterly about one pole from the root of the
 ash, which are marked as corner trees, all on the
 side of a small pond. - Thence north 320 poles,
 passing 3 elms designated on said plat by the letter
 R at 42 poles corner to Parker's said survey, an
 elm and 2 dog woods at 80 poles, 8 or 10 poles to the
 east, as designated on said plat by the letter S
 and to south west corner to James McVitt's survey
 N° 4195 and 4604, crossing a spring branch at 198
 poles, passing a buckeye at 302 poles with very old line
 marks) to the place designated on said plat by
 the letter B where a sugar tree and ash formerly stood,
 as appears by the roots and remains of them such
 trees, though it is impossible to tell by what now re-
 maining of them whether they ever were marked -
 from this place a sugar tree, from which we took
 block N° 1, and designated on said plat by the
 small a near B stands $\text{N} 32^{\circ} 1/2' \text{W}$ 3 poles - on its easterly

side were 3 marks in a line up the tree, a little more to the south were 2 more marks thus, :: on the south are 5 marks in a line, 4 of them are close to each other, after taking the block from the easterly side, we discovered 2 marks on the north side one of them close in the upper side of the chop made in taking out the block. — This tree is claimed by the defendants, as being the south east corner of Calderwood's said survey n^o 3137, and north east corner to Calderwood's said survey n^o 3138 —

Thence n 15° E 408 poles, passing 3 beeches, forked white walnut and hickory stump, at 24 poles, S 86° E 11 poles distant, and designated on said plat by the letter J south west corner to Duncan & Arthur's survey n^o 4443, crossing a branch at 50, a road at 98, at 184 and 186. 2 small spring branches, a road at 206, a branch with steep banks at 222, a small drain at 233 which joins the former 4 poles below, passing two beeches, and fallen maple at 236, about 14 poles to the east as designated on said plat by the letter U and B, north corner to Arthur's said survey — crossing a branch with high steep banks at 310, a branch 7 inks water at 374, a spring branch at 396 poles to a sugar tree and down elm designated on said plat by the letter G and 12, found the sugar tree 2 poles to the east with 3 marks on one side thus :: one not through the bark, one of the two upper ones is up and down the tree, and appears older than the other on the south side are 3 marks, one old one, one looks like a ball had been cut out with the corner of an ax lately, and one above this was made with a large ax since the lower one on this side; on the north side are 3 marks made with a large ax lately and scarcely through the bark, from this we took the block n^o 4. The elm being down is much decayed, so that it is impossible to tell whether it ever was marked; around this sugar tree stand

5 beeches which appear to have been marked more recently than some of the marks on the sugar tree. Some of these have 3, some 4 hacks on a side in a line up the tree, and all are marked on three or more sides, on one of them are the figures 1820. This sugar tree and elm are claimed by the defendants as being the northeast corner to said Calderwood's said survey no 3137, and corner to said Calderwood's survey no 3139, and said corner is referred to by said Knox in answer to the 3^d question of his deposition before referred to. Thence $\text{S } 72^{\circ} \text{ E } 65 \text{ poles}$, (crossing a small drain at 20 poles) to a point represented on said plat by the letter K and N. Thence $\text{S } 16^{\circ} \text{ W } 240 \text{ poles}$, (crossing a line at 59 poles, a branch to links water at 66, at 160 came to sugar-camp branch, crossing it 3 in 9 poles distance) to a random stake designated on said plat by the letter Q. Thence $\text{S } 74^{\circ} \text{ W } 26 \text{ poles}$ to a point 2 poles $\text{S } 16^{\circ} \text{ W}$ from 2 sugar trees, designated on said plat by the letter P, west corner to David Bradford's survey no 3136 and south corner to John Morris's survey no 4121.

May 20th Beginning at the red oak stump at it thence $\text{S } 15^{\circ} \text{ E } 408 \text{ poles}$, (crossing a branch at 28 poles a spring branch at 46, another at 84, a branch to links water at 120, a branch 10 links water at 149, a road at 164 poles, a branch at 172, at 204 poles passing a point $\text{S } 75^{\circ} \text{ W } 204 \text{ poles}$ from the place where Isaac Jean's house stood, which house is represented on said plat by Jean's house, which ^{said} place is the same which was pointed out to me by James M. Person and referred to in his deposition on page 26 of the said depositions before referred to; also ~~the~~ pointed out to me by John Story and referred to in his answer to the 2^d interrogatory in his deposition before referred to; and also the same place as referred to in the answer of John McDonald to the 4th interrogatory put to him by the depts on the 24th page.

45
of the depositions before referred to, passing a sugar tree
at 280 poles, about 2 poles to the east, bearing old marks
as a side line on its west side, crossing a spring
branch at 292, a branch which water at 366 poles
to a place designated on said plat by the letter F
where the timber has been much destroyed by storm
and fire; some beech, sugar trees, and poplar are ly-
ing round, and the small bushes are very thick—
Thence S 74° W 65 poles crossing a small branch at 50,
passing at 62 poles through a thicket of small dogwoods
hickories, and iron woods, to a small branch, repre-
sented on said plat by the G and B. — Thence S 16° W
100 poles, passing a beech at 20 poles about 4 poles to the
east bearing old line marks, crossing a small spring
branch at 160 poles, and the south line of Charles Spen-
cer's survey S 57° 38', and the north line of John-
Galloway's survey S 64° 50' at 224 about 24 feet
west from a lynn ash and red oak, corner to said
survey and designated on said plat by the figure
H, crossing a spring branch at 342 poles, near its
head, a branch which water at 378, and said Spen-
cer's north line at 380 poles, about 24 poles S 80° W from
3 sugar trees and white walnut (all down, represented
on said plat by the figure I) to a line at the point
designated on said plat by the letter K. — Thence
S 74° E 360 poles, crossing a road at 112, a branch at
142, 5 poles from its junction with the River 192 or
more mouths, coming to the bank of Etowah River at
164 poles, continuing down it 10 poles, crossing a
spring branch at 206 poles, passing over a
high knob, to a branch represented represented
on said plat by the letter L —
May 22nd went to the sugar tree at the letter E — Thence
S 75° W 208 poles, (crossing sugar camp branch at
58, and Etowah River at 176 poles) to a point 218 poles
S 15° E from the point Isaac's house. — From
The red oak stump at the letter A — west 62 poles

46
to 3 sugar trees, designated on said plat by the letter M, comes to William Thom's survey no 6447 and south west corner to John Gallows's survey no 6450. Thence south 57 poles to a standing, lynn and sugar tree, and a black walnut and elm stump corner to Thom's said survey, and south east corner to Alex. S. Dandridge's survey no 3220 at the letter N. Returned to the red oak stump at A. thence S 75 E 408 poles, passing a beech at 5 poles, marked as follows, to wit: On its south side with a tomahawk, are 3 marks 2 1/2 and 4 inches apart on the easterly side near the ground are 4 marks 2 and 3 inches apart nine inches above the upper one of these is the 1st one of 3 more, 2 and 5 inches apart; on the northerly side are 3 marks contained in 6 inches on the westerly are 3 contained in 5 inches; on this tree among the marks are the effigies of 2 Indians sketched in the bark; from this tree stands another beech 2 poles distant bearing a similar effigy, all apparently of the same age which is old, crossing a branch 6 links water at 62 poles a spring branch at 90 poles, a road at 158, passing a sugar tree at 154, with 2 marks as a line on its south side, crossing the tail race from James Sawmill at 180, passing 2 poles to the north at 184 poles with old line marks on it, 3 poles to the near the bank of Mad River stands a buckeye which much resembles an old lime tree from which we took block no 3, crossing Mad River at 236, a branch at 336, passing a sugar tree with an old mark on its west side at 370 poles to a point 8 poles south from the sugar tree, from which we took block no 1 and represented on said plat by the small a near B. I certify that the survey adjoining the representative of James Calderwood surveys as

47
represented on the following plat are generally laid from the original surveys as returned into Col. Anderson's Office, by course and distance.

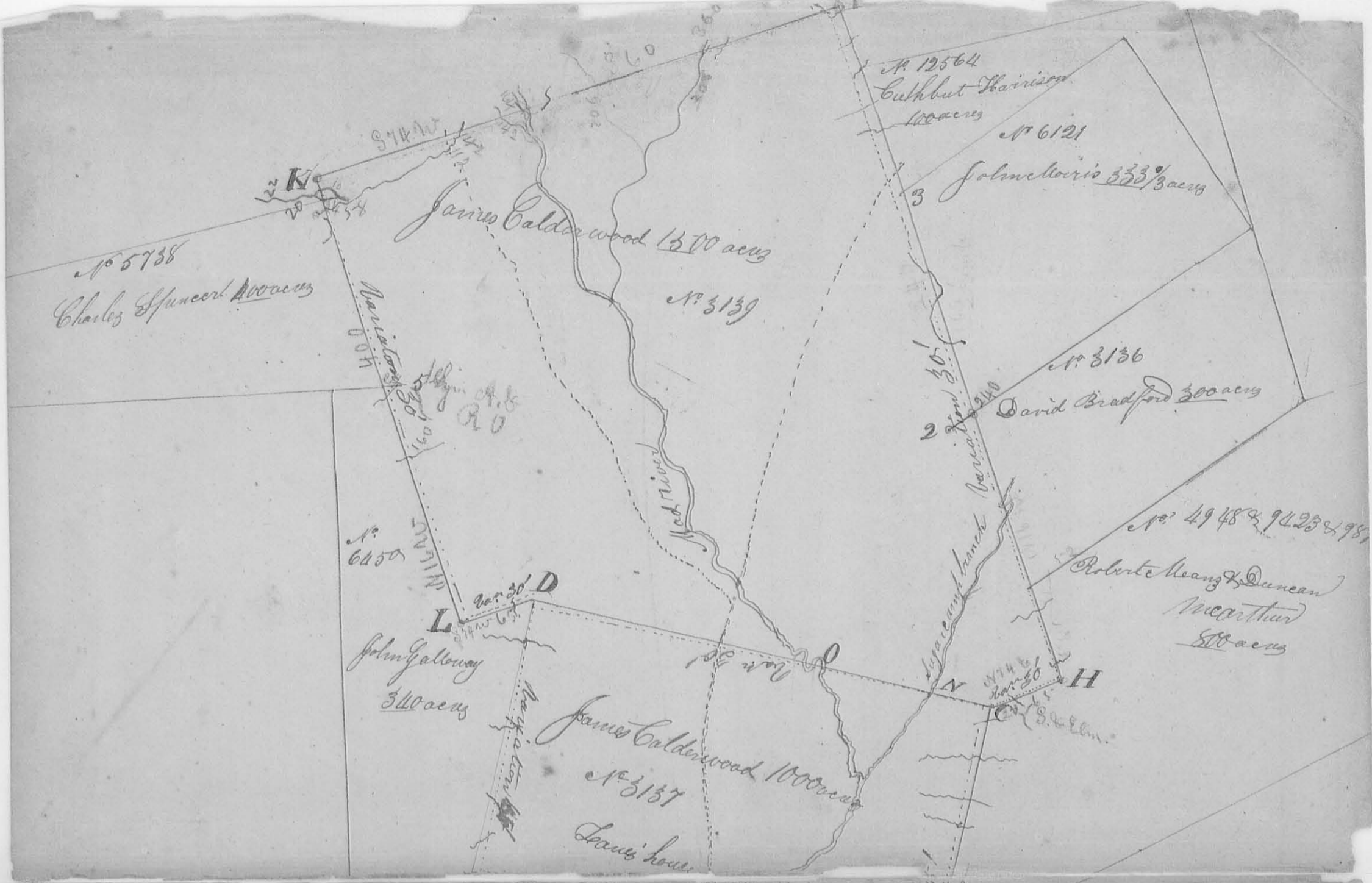
In making above surveys of Calderwood's I have noted one or more of the corners to each survey laid down adjoining the same. - I had the patents which were granted to Lucas Sullivan in 1800 for the survey $r^{\circ} 3137$ of 1000 acres, survey $r^{\circ} 3138$ of 780 acres, and survey $r^{\circ} 3139$ of 1500 acres, and run the courses called for in said patents, some of the lines were run reversing the courses called for in the patents. - The 1000 acres $r^{\circ} 3137$ Beginning with the patent at the point A as represented on the following plat runs thence $S 75^{\circ} E$ 400 poles to B thence $N 75^{\circ} E$ 400 poles to C, thence $S 75^{\circ} W$ 400 poles to D thence $N 75^{\circ} W$ 400 poles to the beginning.

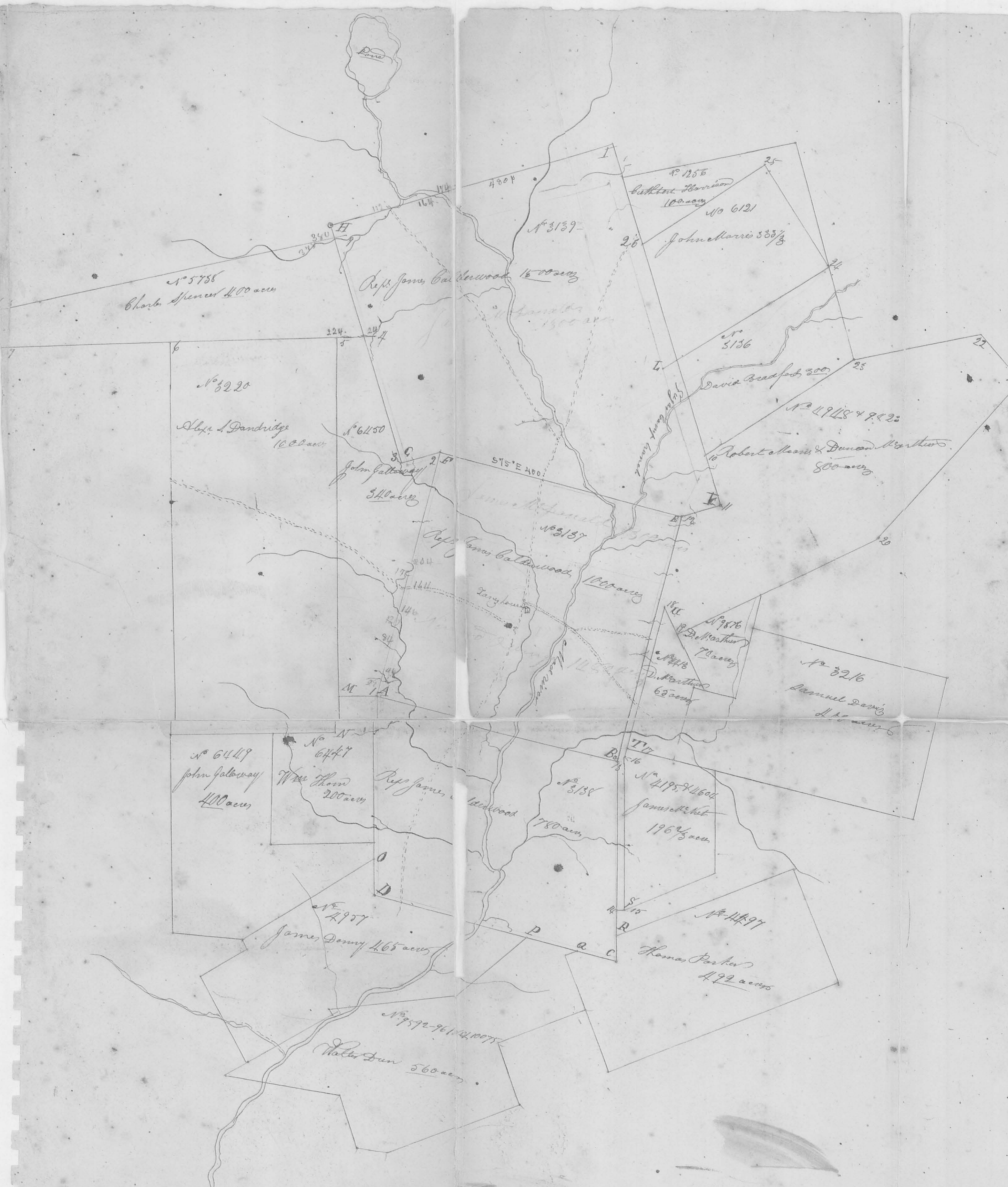
The 780 acres $r^{\circ} 3138$ begins at the said point A runs thence $S 75^{\circ} E$ 400 poles to B thence south 320 poles to C thence $N 74^{\circ} W$ 400 poles to D thence north 390 poles to the beginning.

The 1500 acres $r^{\circ} 3139$ begins at the point F runs thence $S 75^{\circ} E$ 400 poles to G, thence $N 74^{\circ} E$ 65 poles to H, thence $N 76^{\circ} W$ 610 poles to I, thence $S 74^{\circ} W$ 480 poles to J thence $N 75^{\circ} E$ 400 poles to K, thence $S 74^{\circ} E$ 65 poles to the beginning.

I meandered Mad River from Ludlow's line trap to the point represented on said plat. - also meandered sugarcamp branch from its junction with Mad River up as far as it is laid down which said sugar camp branch, as well as Mad River is laid on the said plat from the survey thereof.

The said sugarcamp was 15 links wide at its junction, nearly eddy water; & Mad River 26 link water at said junction running rapidly. The said sugar camp branch is about one third as large as Mad River at this place. - The point γ James house as represented on said plat by James house is the same as pointed out to me and referred to in the depositions of John Story, John McDonald and





This connection of survey was made and
 returned for the defendants in the foregoing
 cases or suits of judgment as what for written before
 with more fully explain
 J. W. Harmon
 S. d.

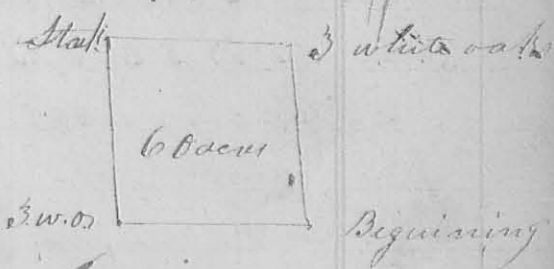
Mad River
 Ludlow's Line

James McPherson, here before referred to, is very near
 the center of the survey of 1500 acres No 2137 as survey
 and laid down on the foregoing plat. From which
 said point to the junction of Sugar camp branch
 and Mad river is about 516 180/poles. The red
 drawn lines represent the plaintiff's claims
 respectively, on which their names are written
 in red.

Robert M. Harmon }
 James Mathews }
 County Surveyor

11th mo. (Nov) 7th 1826 Survey No 60
 Surveyed for Stewart and Rea as follows
 Beginning at a small red oak stump and
 2 white ash, one them which is marked
 "A" & B bears S 72° W 44 links distant
 all in the Greenville treaty line, thence
 S 78° W with said line 99.2 poles to 3 white oaks
 thence S 20° W 99.2 poles to a stake in a pear
 thence S 78° E 99.2 poles to 3 white oaks in the
 east line of the original, thence S 20° E 99.2
 poles with said line
 to the beginning containing
 Sixty acres

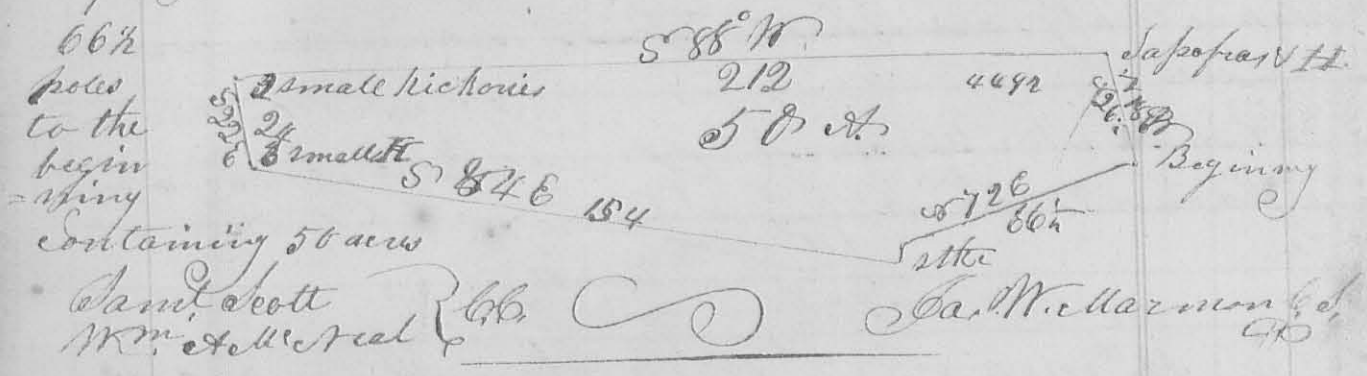
James Moore }
 George Finston }
 County Surveyor



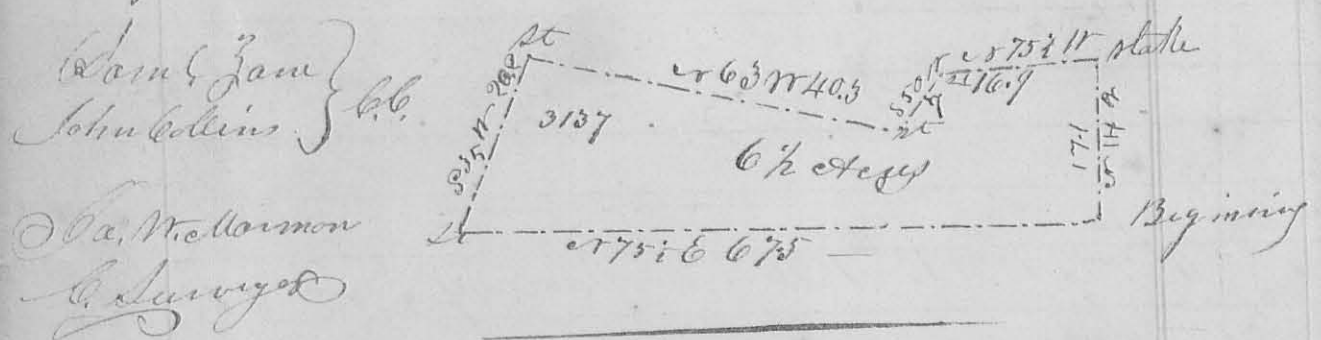
James McPherson }
 County Surveyor

11th mo. (Nov) 10th 1826 Survey No 61
 Surveyed for William S. Neal as follows. Begin
 ning at the northeast corner of James Powers a
 white oak in the east line of Jesse Davis's survey
 No. 4492, thence S 18° W 26 3/4 poles with said line
 to 2 small Sassafras, and white oak thence
 S 88° W 212 poles to a stake and 2 small hickories

in the west line of Davis's said survey, thence
 with said line, S 22° E 24 poles to 3 small hickories
 in said line, and corner to Samuel Scott's land
 thence with the north line of Scott's land S 82° E
 154 poles to a stake in a barren, thence $\text{r} 5^{\circ} \text{N}$
 3 poles to a stake in said barren thence $\text{r} 72^{\circ} \text{E}$
 66 1/2

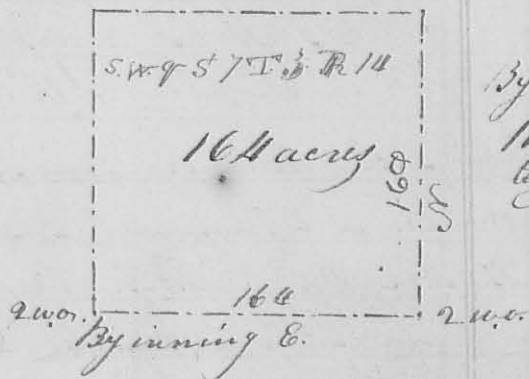


1st Mo (Jan.) 31st 1827 of Surveyor
 Surveyed six and a half acres of land for Lanson
 Curtis. Beginning at a stake in the line between
 Ebenezer Lane and Alex. Long where said line
 crosses the road leading from Zanesfield to Rep.
 -per Sandusky, thence $\text{r} 14^{\circ} \text{E}$ 17.1 poles to a stake
 on the west side of said road, thence $\text{r} 75^{\circ} \text{W}$ 16.9
 poles to a stake, thence $\text{r} 5^{\circ} \text{W}$ 7 poles to a stake near
 a small walnut thence $\text{r} 63^{\circ} \text{W}$ 40.3 poles to a stake
 thence $\text{r} 35^{\circ} \text{W}$ 20.2 poles to said line, thence with said
 line $\text{r} 75^{\circ} \text{E}$ 67.5 poles to the beginning, contain-
 -ing 6 1/2 acres; part of Surveyor 31st 27



1st Mo (Feb.) 6th 1827 of Surveyor 63 (8198)
 Surveyed the S.W. quarter of Section 7 Town 3 Range
 14. E. of the great Miami for George St. Dunn. Beginning
 at the south west corner of said Sec. original bear-
 -ing trees now standing a white oak 22 inches in

58
 diameter & 69° E 51 links distant, a white oak 18
 inches in diameter & N 48° W 56 links distant, thence east
 with the south line of the section (allowing 1/2° easterly
 variation) 164 poles to the original quarter section corner
 a white oak 12 inches in diameter & S 9° W 112 links dist.
 a white oak 17 inches in diameter & S 7 1/2° E 104 links dist
 thence north 160 poles to a
 stone a white oak 26 inches
 diam. & S 85° E 31 links, a
 white oak 24 inch
 diam. 18 links north
 thence west thence west
 1/2° variation allowed
 164 poles to a stone in
 the west line, a small
 blue oak S 50° E 28 links distant, thence south 160 poles
 to the beginning containing 164 acres

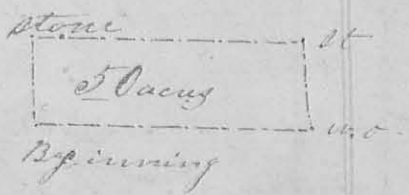


By a scale of
 110 poles
 to the inch

John Doke
 James Steakhouse } Ch. J. W. Harmon
 C. Surveyor

2nd mo. (Feb) 7th 1827 Survey & Co. 64 (8198)

Surveyed 50 acres of land for James Craig: Beginning at
 the S. W. corner of section 7 Town. 3 Range 14 E. of the Great Mi-
 -amie a white oak 18 inches in diam. N 48° W 56 links dist.
 a white oak 22 inches in diam. & 69° E 51 links; thence east
 with the south line of said section (allowing 1/2° easterly
 variation) 164 poles to the original quarter section corner
 a white oak 15 in. in diam. & S 9° W 112 links dist thence
 a white oak 17 inches in diam. & S 7 1/2° E 104 links dist. thence
 north 148 1/2 poles to a stake
 thence west 164 poles to a stone
 and white oak 20 in. in diam.
 & S 74° W 9 links dist. 2 black
 oaks growing from one root
 south 22 links; thence with the west line of said sec. 148 1/2
 poles to the beginning containing 50 acres



James Steakhouse } Ch. J. W. Harmon
 & John Doke } C. Surveyor