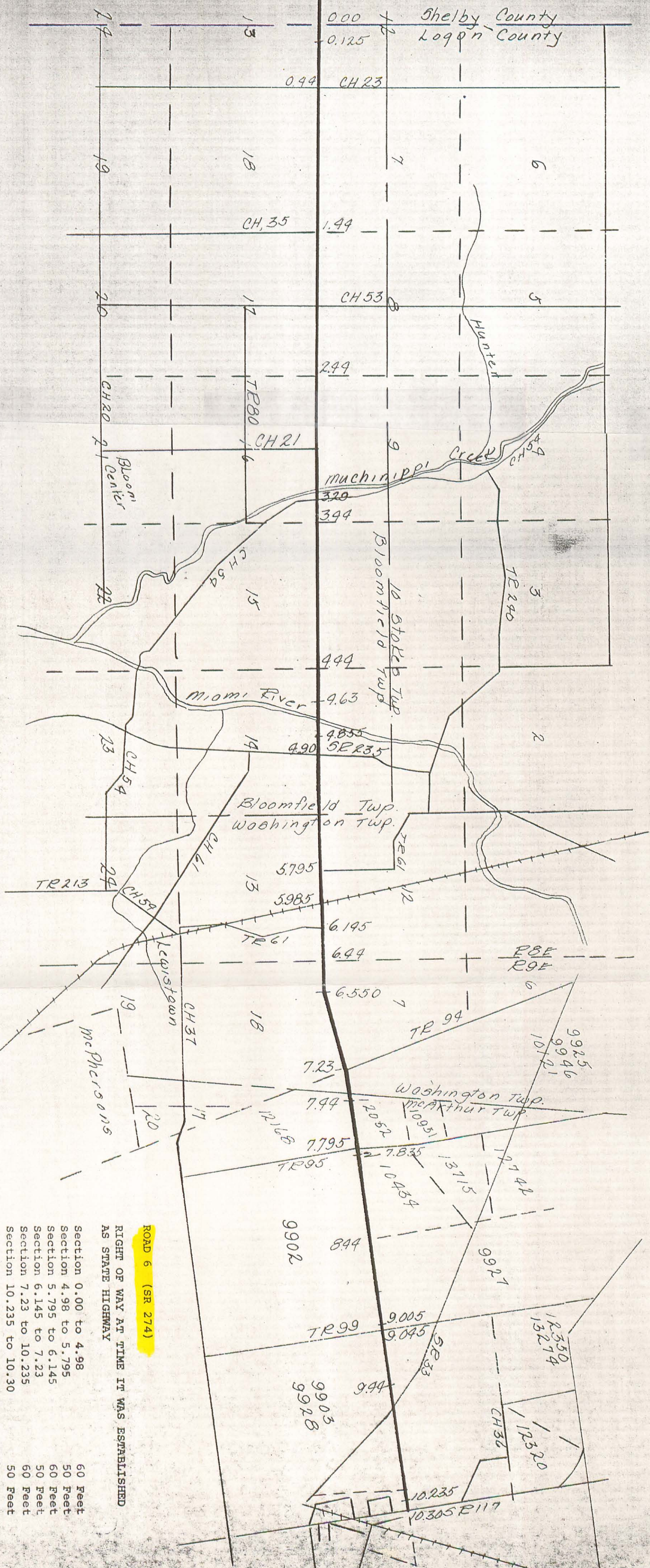


ROAD 6



ROAD 6 (SR 274)

RIGHT OF WAY AT TIME IT WAS ESTABLISHED  
AS STATE HIGHWAY

- Section 0.00 to 4.98
- Section 4.98 to 5.795
- Section 5.795 to 6.145
- Section 6.145 to 7.23
- Section 7.23 to 10.235
- Section 10.235 to 10.30