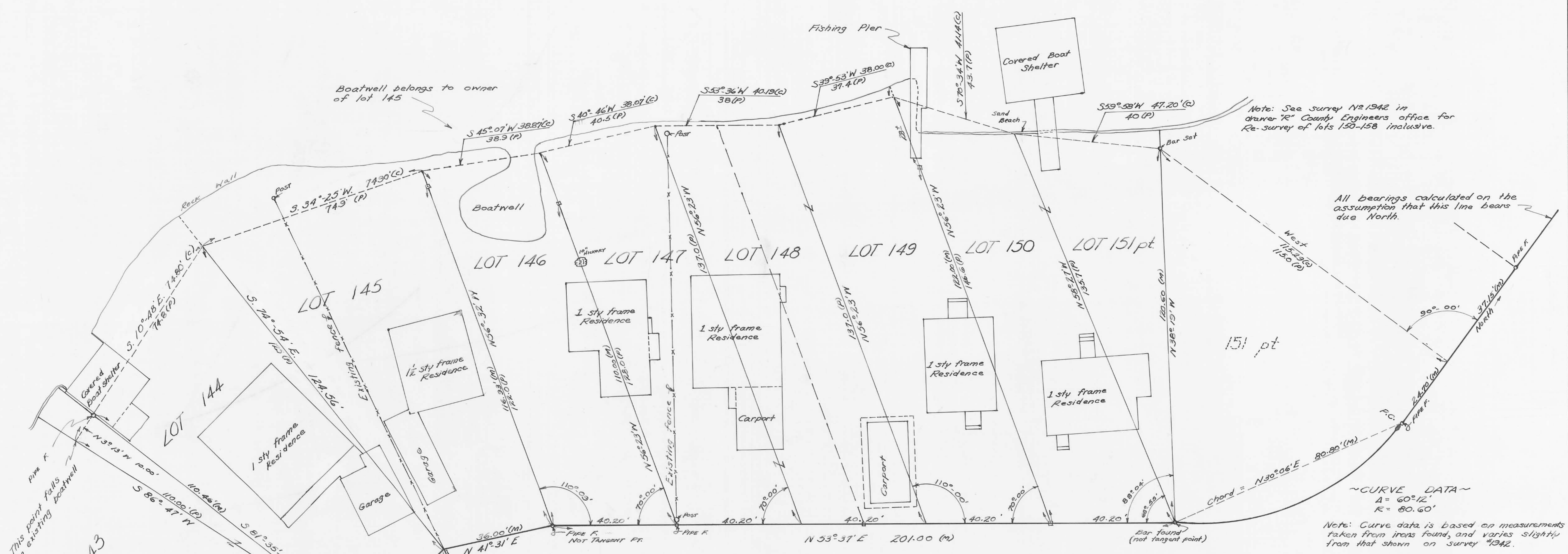


Scale 1"=15'



Boatwell belongs to owner of lot 145

Note: See survey No. 1942 in drawer "R" County Engineers office for Re-survey of lots 150-158 inclusive.

All bearings calculated on the assumption that this line bears due North.

~CURVE DATA~  
A = 60°12'  
R = 80.60'  
Note: Curve data is based on measurements taken from irons found, and varies slightly from that shown on survey #1342.

Original map shows lots 146 thru 150 to be 40' wide at road. Excess found was divided as shown.

See survey No. 2702 filed in drawer "R" Engineers Office.

**SURVEYOR'S NOTE**  
This map correctly represents a survey made by me in Sept 1961, showing numerous encroachments involving lots 144 thru 150 in Seminole Sub "A", Seminole Island. The dotted line along the shoreline represents the boundary as shown on the original plat. Those bearings and distances followed by the letter "C" are calculated quantities, those followed by the letter "M" are field measurements, and those followed by the letter "P" are the quantities shown on the original plat. The pipe found at the SE corner of lot 147 is about 0.2' west of 9/4 line. No attempt was made to establish a curve along the east side of lots 144 & 145. Five feet additional ground has been acquired by the County to increase 9/4 width from 40' to 50'. This has not been indicated.

William H. Lewis  
William H. Lewis  
Surveyor #4465

**LOTS 144 TO 150 INCLUSIVE**  
**SEMINOLE SUBDIVISION "A"**  
VMS 12276 STOKES TWP. LOGAN CO., O.  
1961