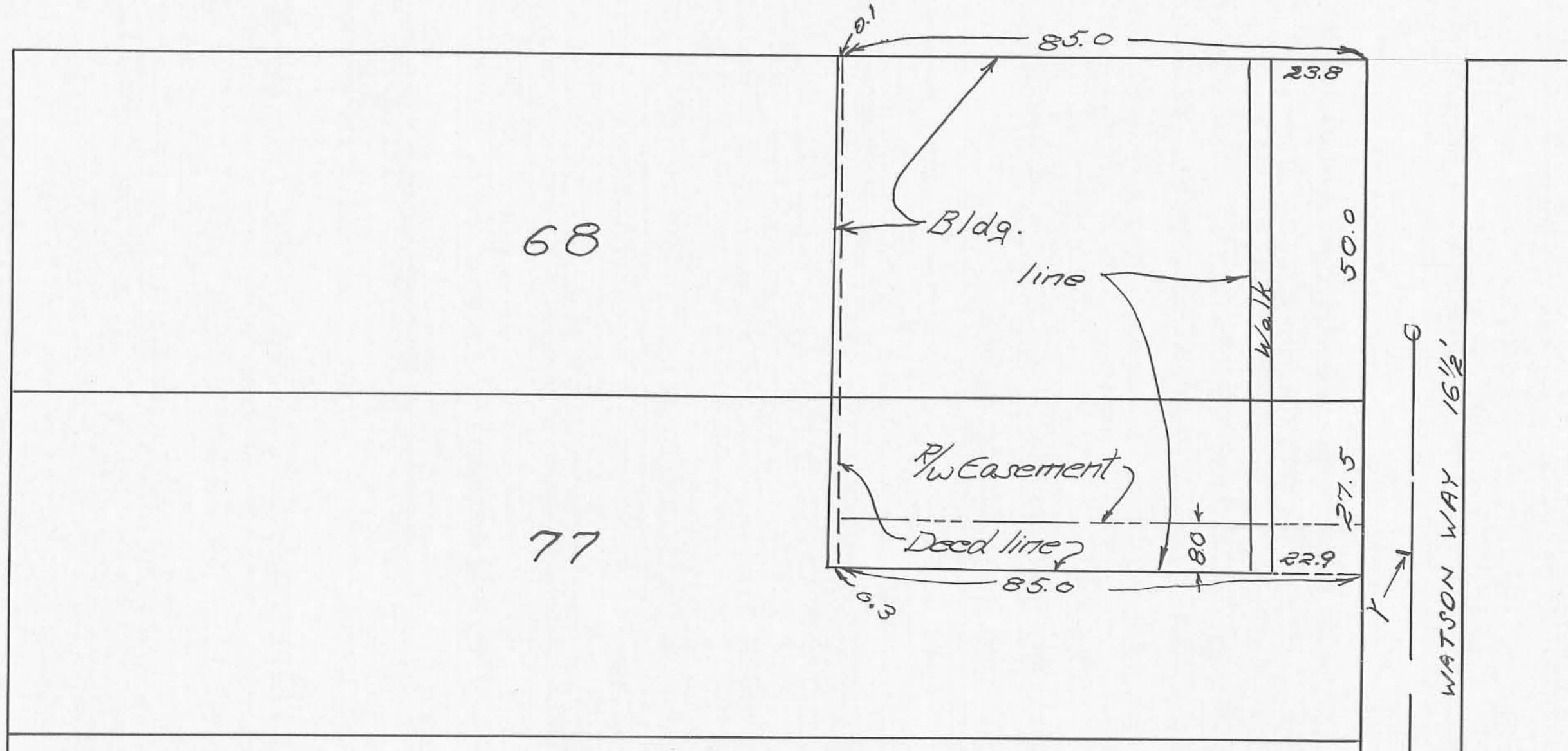


DETROIT ST. 60'

COLUMBUS AVE 80'



NOTES.

1. See Deed Record Book 304, pages 484 & 485, Logan County Recorders Office.
2. Building on E on east & west & over on south as shown.
3. Sewer lines shown were copied from City Engr. office
4. Deed calls for 8.0' P/W easement on east side of property (see deed).

APART of LOTS 68 & 77  
 BELLEFONTAINE, OHIO  
 SURVEYED by: OWEN K. SHIRK, SURVEYOR 4271

M.H.324