

MARY CEDER BRADEN
6.10 Ac.

CHARLES E. WHITNEY ETUX
17.16 Ac.

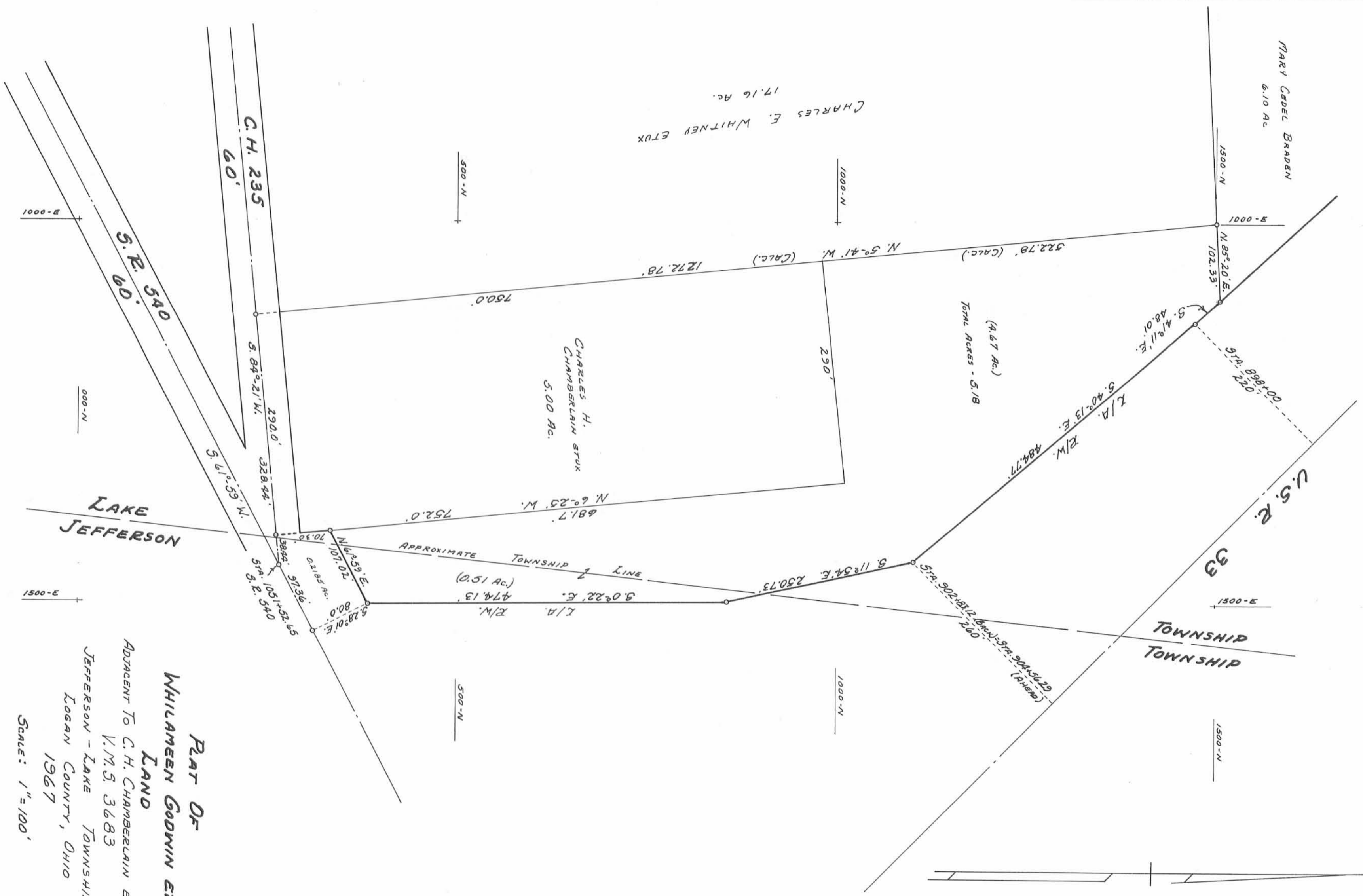
CHARLES H. CHAMBERLAIN ETUX
5.00 Ac.

APPROXIMATE TOWNSHIP LINE

TOWNSHIP
TOWNSHIP

**PART OF
WHILAMEEN GODWIN ETAL
LAND**
ADJACENT TO C. H. CHAMBERLAIN ETUX
V.M.S. 3683
JEFFERSON - LAKE TOWNSHIPS
LOGAN COUNTY, OHIO
1967

Scale: 1" = 100'



Drawn By Daniel E. Gilsbert
T.M.D.
April 10, 1967