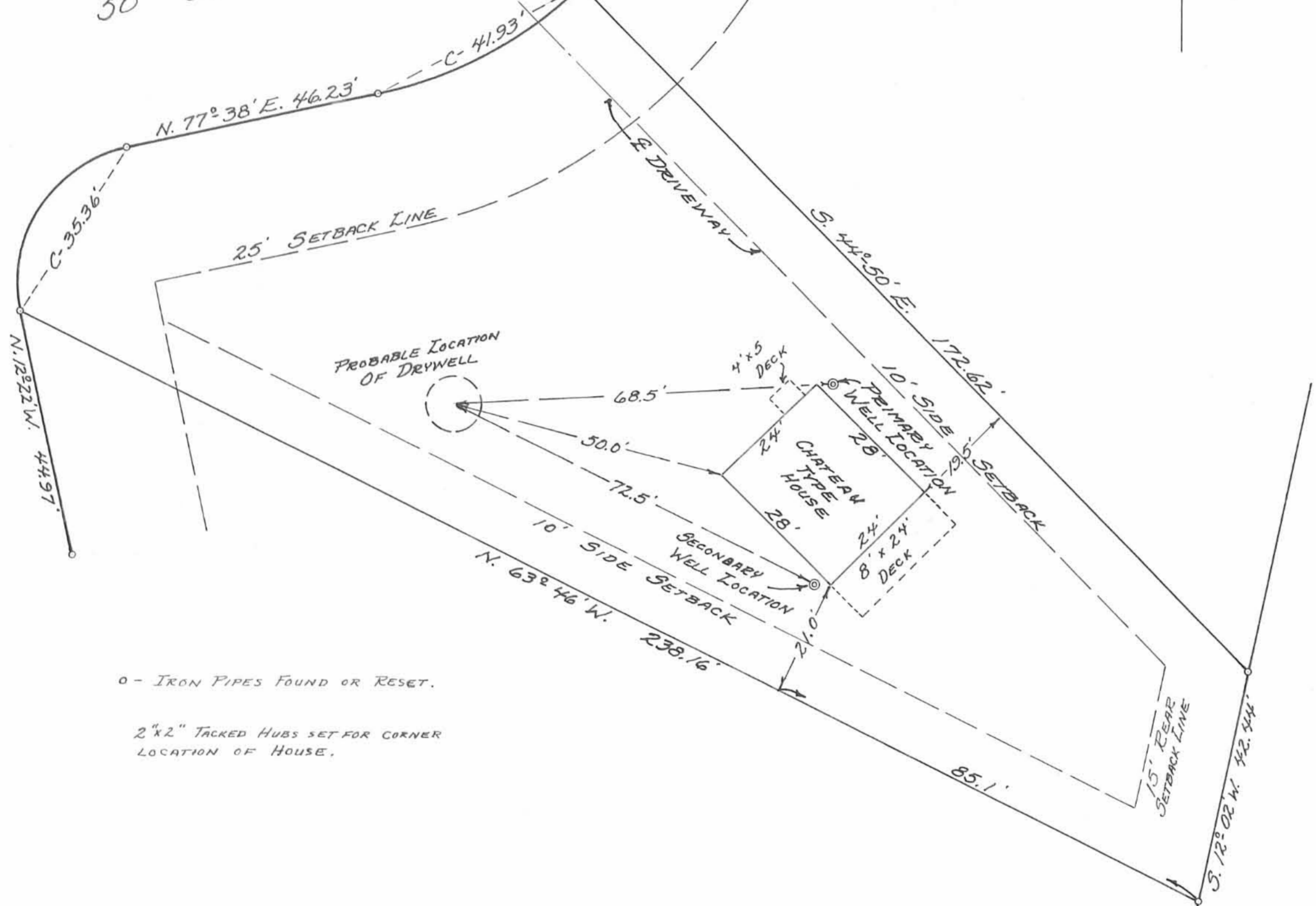




50' STREET

50' STREET



o - IRON PIPES FOUND OR RESET.

2"x2" TACKED HUBS SET FOR CORNER LOCATION OF HOUSE.

LOT No. 46 SURVEY
 ALPINE VILLAGE SUBDIVISION
 VILLAGE OF VALLEY HI
 V.M.S. No. 3138
 JEFFERSON TOWNSHIP
 LOGAN COUNTY, OHIO
 MARCH 15, 1969

SCALE: 1" = 20'

REFERENCE:
 ALPINE VILLAGE SUBDIVISION - J-172.
 PLAT BOOK 4-D PAGE 105, LO. CO. RECORDER.

SURVEYED AND PLATTED BY:
 DANIEL E. GILBERT, P.S.
 REG. SUR. No. 5402
 428 N. MADRIVER ST.
 BELLEFONTAINE, OHIO 43311