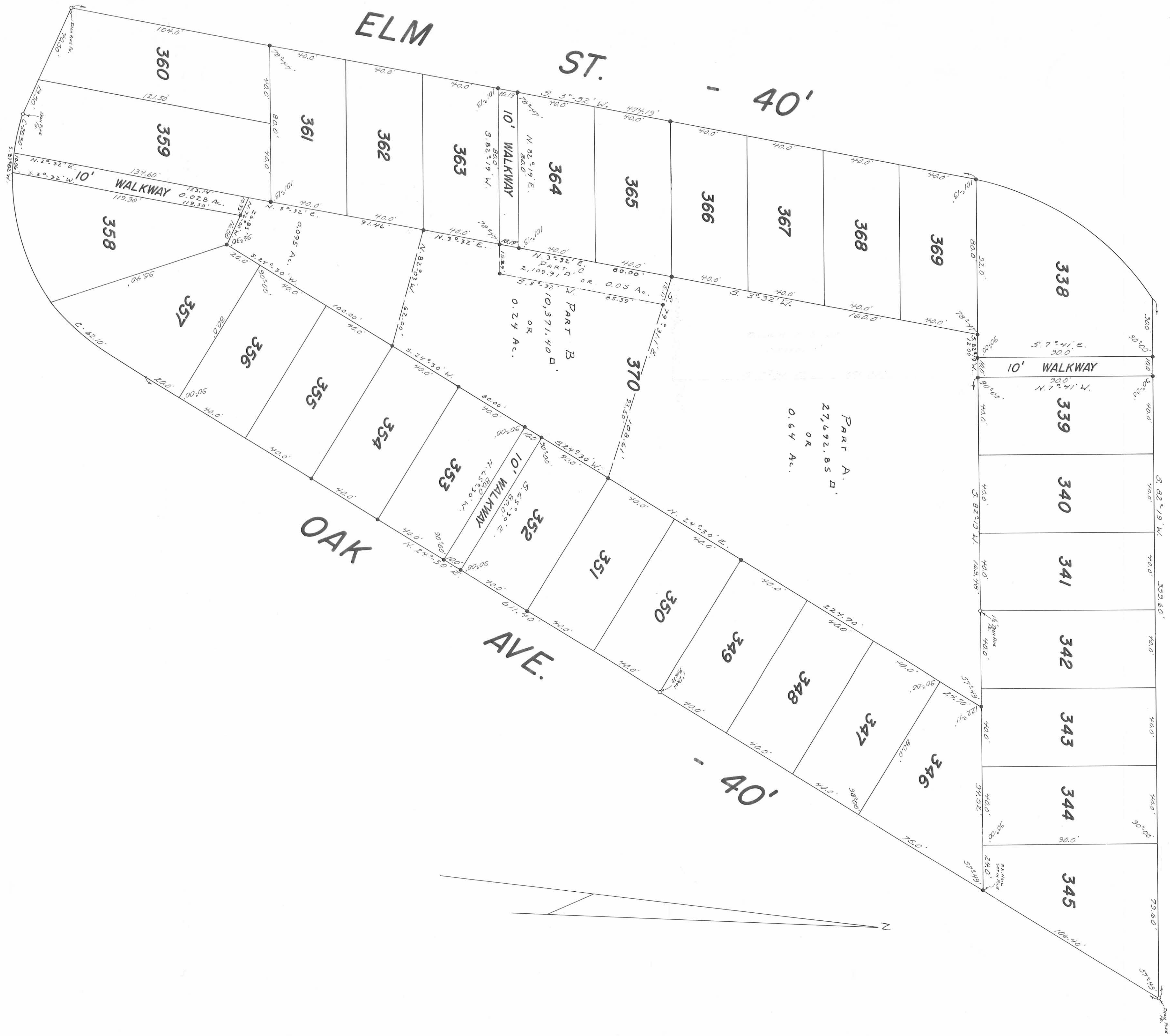


BEECH AVE. - 40'



• - 3/4" Iron Bars Set.

Reference:  
 Avondale Park Allot. No. 3,  
 Part Book C, Vol. 3 Page 21,  
 Co. Co. Eng. File J-740,  
 Trussel F.B. #13 Page 103.

NOTE:  
 THIS PLAT REVISED MAY 14, 1982.

David C. Wood, P.S.  
 Rec. Sur. No. 5402

Surveyed and Platted By:  
 Daniel E. Quiser, P.S.  
 Leg. Sur. No. 5402  
 428 N. MADRIVE ST.  
 BELLEFONTAINE, OHIO 43311

BOTCHLETT SURVEY  
 LOT NO. 370  
 AVONDALE PARK ALLOT. NO. 3  
 V. M. S. NO. 12276  
 STOKES TOWNSHIP  
 LOGAN COUNTY, OHIO  
 SEPTEMBER 1970  
 SCALE: 1" = 25'