

ESTHER A. ABBOTT
11.40 Ac.

PAUL E. SHOUGH ETUX
4.75 Ac.

JUANITA HUBER
16.94 Ac.

12.99 Ac.

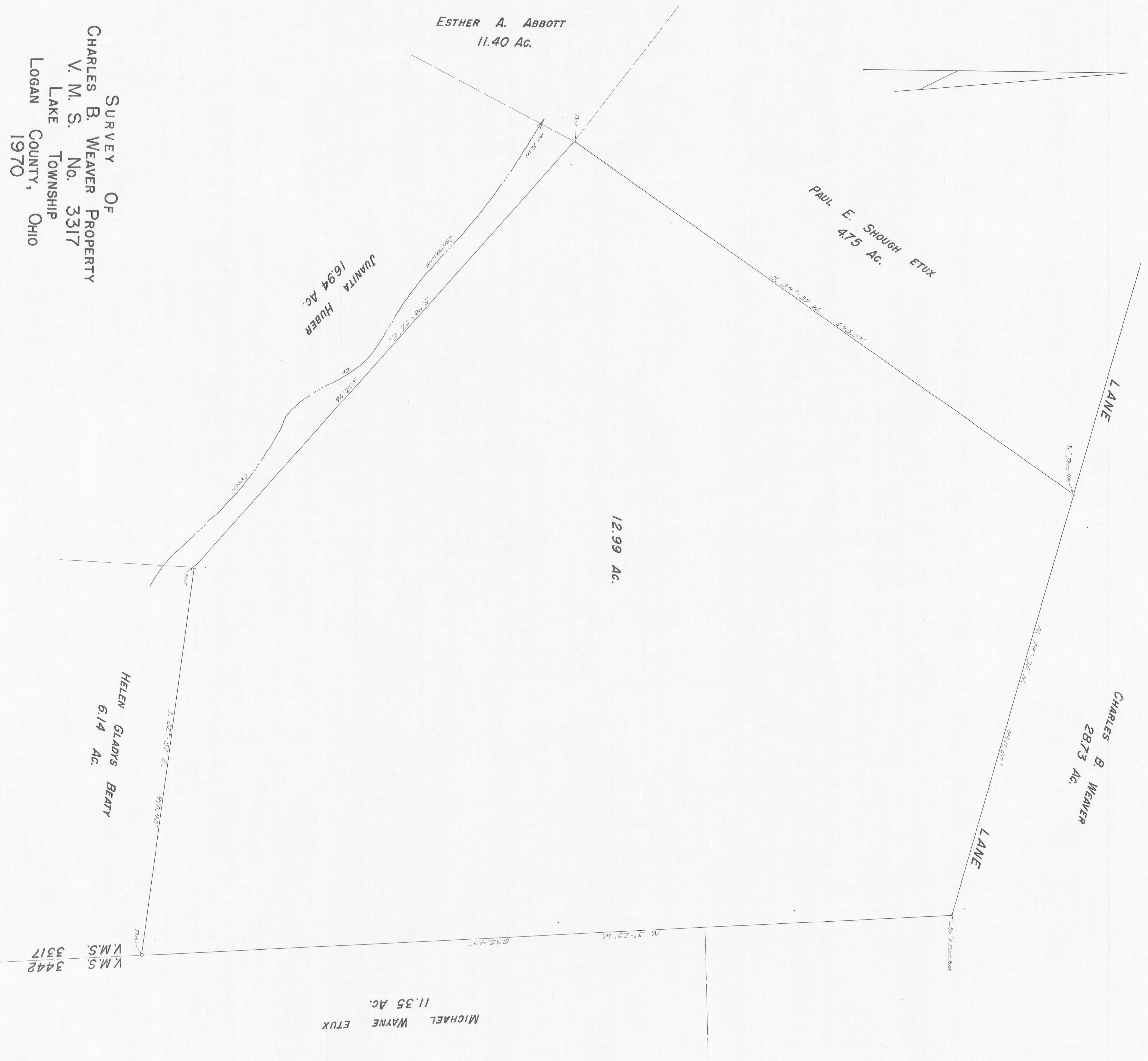
CHARLES B. WEAVER
28.73 Ac.

HELEN GLADYS BEATY
6.14 Ac.

MICHAEL WAYNE ETUX
11.35 Ac.

SURVEY OF
CHARLES B. WEAVER PROPERTY
V. M. S. No. 3317
LAKE TOWNSHIP
LOGAN COUNTY, OHIO
1970

SCALE: 1" = 40'



V.M.S. 3442
V.M.S. 3317

SURVEYED AND PLATTED BY:
DANIEL E. GILBERT, P.S.
748 N. MARSHALL ST.
BATESVILLE, OHIO 45311