

# SURVEY TRACT

## HONDA OF AMERICA MFG., INC.

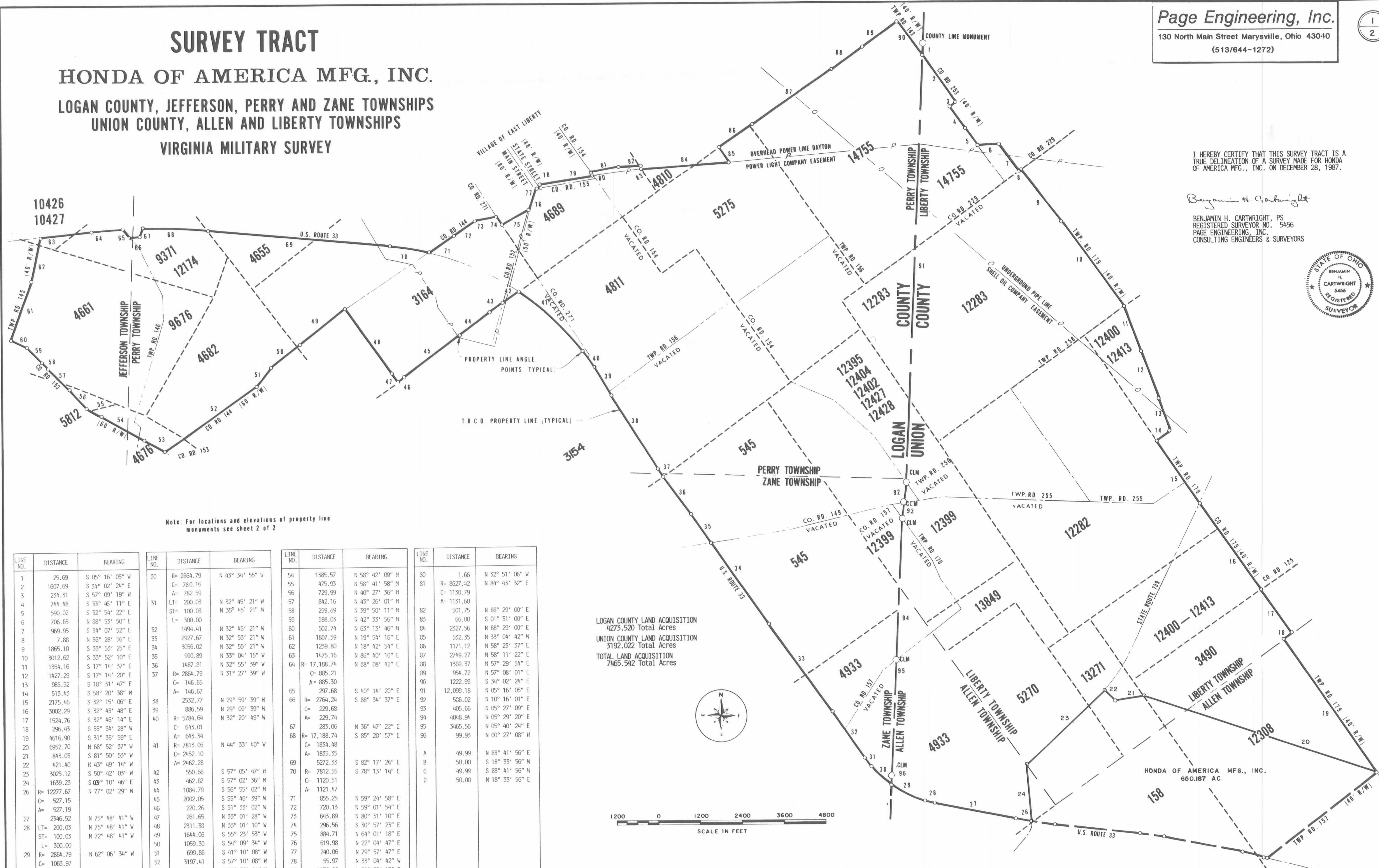
LOGAN COUNTY, JEFFERSON, PERRY AND ZANE TOWNSHIPS  
 UNION COUNTY, ALLEN AND LIBERTY TOWNSHIPS

### VIRGINIA MILITARY SURVEY

I HEREBY CERTIFY THAT THIS SURVEY TRACT IS A TRUE DELINEATION OF A SURVEY MADE FOR HONDA OF AMERICA MFG., INC. ON DECEMBER 28, 1987.

*Benjamin H. Cartwright*

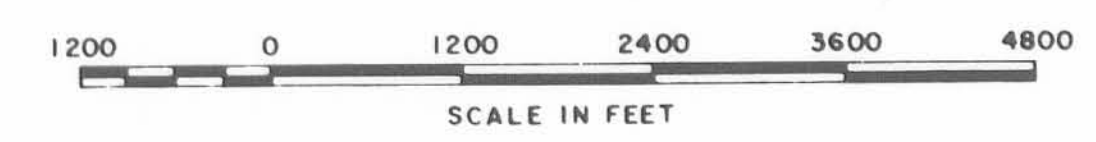
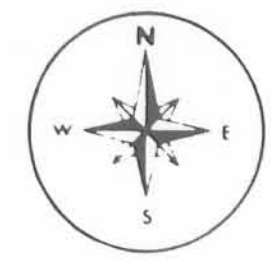
BENJAMIN H. CARTWRIGHT, PS  
 REGISTERED SURVEYOR NO. 5456  
 PAGE ENGINEERING, INC.  
 CONSULTING ENGINEERS & SURVEYORS



Note: For locations and elevations of property line monuments see sheet 2 of 2

LINE NO.	DISTANCE	BEARING	LINE NO.	DISTANCE	BEARING	LINE NO.	DISTANCE	BEARING	LINE NO.	DISTANCE	BEARING
1	25.69	S 05° 16' 05" W	30	R= 2864.79	N 43° 34' 55" W	54	1385.57	N 58° 42' 09" W	80	1.66	N 32° 51' 06" W
2	1607.69	S 34° 02' 24" E		C= 780.16		55	475.93	N 58° 41' 58" W	81	R= 8627.42	N 84° 43' 32" E
3	234.31	S 57° 09' 19" W		A= 782.59		56	729.99	N 40° 27' 36" W		C= 1130.79	
4	744.48	S 35° 46' 11" E	31	LT= 200.03	N 32° 45' 21" W	57	842.16	N 43° 26' 01" W		A= 1131.60	
5	590.02	S 32° 54' 22" E		ST= 100.03	N 35° 45' 21" W	58	259.69	N 39° 50' 11" W	82	501.75	N 88° 29' 00" E
6	706.65	N 88° 53' 50" E		L= 300.00		59	598.03	N 42° 35' 56" W	83	66.00	S 01° 31' 00" E
7	969.95	S 34° 07' 52" E	32	1494.41	N 32° 45' 21" W	60	502.74	N 63° 13' 46" W	84	2327.56	N 88° 29' 00" E
8	7.88	N 56° 28' 56" E		2927.67	N 32° 53' 21" W	61	1807.59	N 19° 54' 16" E	85	532.35	N 33° 04' 42" W
9	1865.10	S 33° 53' 25" E	34	3056.67	N 32° 55' 21" W	62	1239.80	N 18° 42' 54" E	86	1171.12	N 58° 23' 37" E
10	3012.62	S 33° 52' 10" E	35	990.89	N 33° 04' 15" W	63	1475.16	N 86° 40' 10" E	87	2749.27	N 58° 11' 22" E
11	1354.16	S 17° 14' 37" E	36	1487.81	N 32° 55' 39" W	64	R= 17,188.74	N 88° 08' 42" E	88	1369.37	N 57° 29' 54" E
12	1427.29	S 17° 14' 20" E		R= 2864.79	N 31° 27' 39" W		C= 885.21		89	954.72	N 57° 08' 01" E
13	985.52	S 18° 31' 47" E		C= 146.65			A= 885.30		90	1222.99	S 34° 02' 24" E
14	513.43	S 58° 20' 38" W		A= 146.67		65	297.68	S 40° 14' 20" E	91	12,099.18	N 05° 16' 05" E
15	2175.46	S 32° 15' 06" E	38	2532.77	N 29° 59' 39" W	66	R= 2764.24	S 88° 34' 37" E	92	506.02	N 10° 16' 01" E
16	3002.29	S 32° 43' 48" E	39	886.59	N 29° 09' 39" W		C= 229.68		93	405.66	N 05° 27' 09" E
17	1524.76	S 32° 46' 14" E	40	R= 5784.64	N 32° 20' 49" W		A= 229.74		94	4048.94	N 05° 29' 20" E
18	296.43	S 55° 54' 28" W		C= 643.01		67	283.06	N 36° 47' 22" E	95	3465.56	N 05° 40' 24" E
19	4616.90	S 31° 35' 59" E		A= 643.34		68	R= 17,188.74	S 85° 20' 57" E	96	99.93	N 00° 27' 08" W
20	6952.70	N 68° 52' 37" W	41	R= 7813.06	N 44° 33' 40" W		C= 1834.48		A	49.99	N 83° 41' 56" E
21	843.05	S 81° 50' 53" W		C= 2462.10			A= 1835.35		B	50.00	S 18° 33' 56" W
22	421.40	N 43° 49' 14" W	42	550.66	S 57° 05' 47" W	69	5272.33	S 82° 17' 24" E	C	49.99	N 83° 41' 56" W
23	3025.12	S 50° 42' 03" W		462.87		70	R= 7812.95	S 78° 13' 14" E	D	50.00	N 18° 33' 56" E
24	1639.25	S 03° 10' 46" E	43	1084.79	S 56° 55' 02" W		C= 1120.51				
25	527.15	N 77° 02' 29" W	44	2002.05	S 55° 46' 39" W	71	855.25	N 59° 24' 58" E			
26	R= 1227.67		45	220.26	S 51° 33' 02" W	72	720.13	N 59° 01' 54" E			
27	C= 527.15		46	251.65	N 33° 01' 28" W	73	643.89	N 80° 31' 10" E			
28	A= 527.19		47	2511.38	N 33° 01' 10" W	74	236.56	S 30° 57' 23" E			
29	2946.52	N 75° 48' 41" W	48	1644.06	S 55° 25' 53" W	75	884.71	N 64° 01' 18" E			
	LT= 200.05	N 75° 48' 41" W	49	1059.30	S 54° 09' 34" W	76	619.98	N 22° 04' 47" E			
	R= 2864.79	N 72° 48' 41" W	50	699.86	S 41° 10' 08" W	77	240.06	N 79° 57' 47" E			
	C= 1063.97	N 62° 06' 34" W	51	3197.41	S 57° 10' 08" W	78	55.97	N 33° 04' 42" W			
	A= 1070.18		52	712.73	N 56° 32' 14" W	79	1436.86	N 79° 57' 47" E			

LOGAN COUNTY LAND ACQUISITION  
 4273.520 Total Acres  
 UNION COUNTY LAND ACQUISITION  
 3192.022 Total Acres  
 TOTAL LAND ACQUISITION  
 7465.542 Total Acres



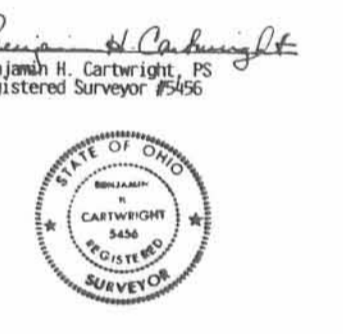
Bearing assumed from previous survey by Henry H. Carpenter, 5-6-27, on December 15, 1922.



TO: HONDA OF AMERICA MFG., INC. AND COMMONWEALTH LAND TITLE INSURANCE COMPANY

The undersigned hereby certifies that on December 28, 1967, the undersigned surveyor did perform an actual field inspection and survey of the premises shown on this plat of survey prepared by the surveyor; that the information shown on this survey plat is true and correct as determined by the field inspection and survey as of the date hereof; that the improvements erected on the premises lie wholly within the boundary of the premises and no part thereof encroaches on or over the land of others or on or over any easements or rights-of-way of others (or if there be any such encroachments, the same are clearly specified and shown on this survey plat); that no adjoining structure encroaches upon the premises or upon any dominant easement appurtenant thereto (or if there be any such encroachments, the same are clearly specified and shown on this survey plat); that there are no rights-of-way, highways, roads, located on, crossing or running through the premises, except as any of the foregoing matters are identified on this survey plat; that this survey plat accurately depicts all of the easements and other interests disclosed as from 6 through 105, 107 through 109, 110 through 112, 113 through 116, 117 through 119, 120 through 122, 123 through 125, 126 through 128, 129 through 131, 132 through 134, 135 through 137, 138 through 140, 141 through 143, 144 through 146, 147 through 149, 150 through 152, 153 through 155, 156 through 158, 159 through 161, 162 through 164, 165 through 167, 168 through 170, 171 through 173, 174 through 176, 177 through 179, 180 through 182, 183 through 185, 186 through 188, 189 through 191, 192 through 194, 195 through 197, 198 through 200, 201 through 203, 204 through 206, 207 through 209, 210 through 212, 213 through 215, 216 through 218, 219 through 221, 222 through 224, 225 through 227, 228 through 230, 231 through 233, 234 through 236, 237 through 239, 240 through 242, 243 through 245, 246 through 248, 249 through 251, 252 through 254, 255 through 257, 258 through 260, 261 through 263, 264 through 266, 267 through 269, 270 through 272, 273 through 275, 276 through 278, 279 through 281, 282 through 284, 285 through 287, 288 through 290, 291 through 293, 294 through 296, 297 through 299, 300 through 302, 303 through 305, 306 through 308, 309 through 311, 312 through 314, 315 through 317, 318 through 320, 321 through 323, 324 through 326, 327 through 329, 330 through 332, 333 through 335, 336 through 338, 339 through 341, 342 through 344, 345 through 347, 348 through 350, 351 through 353, 354 through 356, 357 through 359, 360 through 362, 363 through 365, 366 through 368, 369 through 371, 372 through 374, 375 through 377, 378 through 380, 381 through 383, 384 through 386, 387 through 389, 390 through 392, 393 through 395, 396 through 398, 399 through 401, 402 through 404, 405 through 407, 408 through 410, 411 through 413, 414 through 416, 417 through 419, 420 through 422, 423 through 425, 426 through 428, 429 through 431, 432 through 434, 435 through 437, 438 through 440, 441 through 443, 444 through 446, 447 through 449, 450 through 452, 453 through 455, 456 through 458, 459 through 461, 462 through 464, 465 through 467, 468 through 470, 471 through 473, 474 through 476, 477 through 479, 480 through 482, 483 through 485, 486 through 488, 489 through 491, 492 through 494, 495 through 497, 498 through 500, 501 through 503, 504 through 506, 507 through 509, 510 through 512, 513 through 515, 516 through 518, 519 through 521, 522 through 524, 525 through 527, 528 through 530, 531 through 533, 534 through 536, 537 through 539, 540 through 542, 543 through 545, 546 through 548, 549 through 551, 552 through 554, 555 through 557, 558 through 560, 561 through 563, 564 through 566, 567 through 569, 570 through 572, 573 through 575, 576 through 578, 579 through 581, 582 through 584, 585 through 587, 588 through 590, 591 through 593, 594 through 596, 597 through 599, 600 through 602, 603 through 605, 606 through 608, 609 through 611, 612 through 614, 615 through 617, 618 through 620, 621 through 623, 624 through 626, 627 through 629, 630 through 632, 633 through 635, 636 through 638, 639 through 641, 642 through 644, 645 through 647, 648 through 650, 651 through 653, 654 through 656, 657 through 659, 660 through 662, 663 through 665, 666 through 668, 669 through 671, 672 through 674, 675 through 677, 678 through 680, 681 through 683, 684 through 686, 687 through 689, 690 through 692, 693 through 695, 696 through 698, 699 through 701, 702 through 704, 705 through 707, 708 through 710, 711 through 713, 714 through 716, 717 through 719, 720 through 722, 723 through 725, 726 through 728, 729 through 731, 732 through 734, 735 through 737, 738 through 740, 741 through 743, 744 through 746, 747 through 749, 750 through 752, 753 through 755, 756 through 758, 759 through 761, 762 through 764, 765 through 767, 768 through 770, 771 through 773, 774 through 776, 777 through 779, 780 through 782, 783 through 785, 786 through 788, 789 through 791, 792 through 794, 795 through 797, 798 through 800, 801 through 803, 804 through 806, 807 through 809, 810 through 812, 813 through 815, 816 through 818, 819 through 821, 822 through 824, 825 through 827, 828 through 830, 831 through 833, 834 through 836, 837 through 839, 840 through 842, 843 through 845, 846 through 848, 849 through 851, 852 through 854, 855 through 857, 858 through 860, 861 through 863, 864 through 866, 867 through 869, 870 through 872, 873 through 875, 876 through 878, 879 through 881, 882 through 884, 885 through 887, 888 through 890, 891 through 893, 894 through 896, 897 through 899, 900 through 902, 903 through 905, 906 through 908, 909 through 911, 912 through 914, 915 through 917, 918 through 920, 921 through 923, 924 through 926, 927 through 929, 930 through 932, 933 through 935, 936 through 938, 939 through 941, 942 through 944, 945 through 947, 948 through 950, 951 through 953, 954 through 956, 957 through 959, 960 through 962, 963 through 965, 966 through 968, 969 through 971, 972 through 974, 975 through 977, 978 through 980, 981 through 983, 984 through 986, 987 through 989, 990 through 992, 993 through 995, 996 through 998, 999 through 1001, 1002 through 1004, 1005 through 1007, 1008 through 1010, 1011 through 1013, 1014 through 1016, 1017 through 1019, 1020 through 1022, 1023 through 1025, 1026 through 1028, 1029 through 1031, 1032 through 1034, 1035 through 1037, 1038 through 1040, 1041 through 1043, 1044 through 1046, 1047 through 1049, 1050 through 1052, 1053 through 1055, 1056 through 1058, 1059 through 1061, 1062 through 1064, 1065 through 1067, 1068 through 1070, 1071 through 1073, 1074 through 1076, 1077 through 1079, 1080 through 1082, 1083 through 1085, 1086 through 1088, 1089 through 1091, 1092 through 1094, 1095 through 1097, 1098 through 1100, 1101 through 1103, 1104 through 1106, 1107 through 1109, 1110 through 1112, 1113 through 1115, 1116 through 1118, 1119 through 1121, 1122 through 1124, 1125 through 1127, 1128 through 1130, 1131 through 1133, 1134 through 1136, 1137 through 1139, 1140 through 1142, 1143 through 1145, 1146 through 1148, 1149 through 1151, 1152 through 1154, 1155 through 1157, 1158 through 1160, 1161 through 1163, 1164 through 1166, 1167 through 1169, 1170 through 1172, 1173 through 1175, 1176 through 1178, 1179 through 1181, 1182 through 1184, 1185 through 1187, 1188 through 1190, 1191 through 1193, 1194 through 1196, 1197 through 1199, 1200 through 1202, 1203 through 1205, 1206 through 1208, 1209 through 1211, 1212 through 1214, 1215 through 1217, 1218 through 1220, 1221 through 1223, 1224 through 1226, 1227 through 1229, 1230 through 1232, 1233 through 1235, 1236 through 1238, 1239 through 1241, 1242 through 1244, 1245 through 1247, 1248 through 1250, 1251 through 1253, 1254 through 1256, 1257 through 1259, 1260 through 1262, 1263 through 1265, 1266 through 1268, 1269 through 1271, 1272 through 1274, 1275 through 1277, 1278 through 1280, 1281 through 1283, 1284 through 1286, 1287 through 1289, 1290 through 1292, 1293 through 1295, 1296 through 1298, 1299 through 1301, 1302 through 1304, 1305 through 1307, 1308 through 1310, 1311 through 1313, 1314 through 1316, 1317 through 1319, 1320 through 1322, 1323 through 1325, 1326 through 1328, 1329 through 1331, 1332 through 1334, 1335 through 1337, 1338 through 1340, 1341 through 1343, 1344 through 1346, 1347 through 1349, 1350 through 1352, 1353 through 1355, 1356 through 1358, 1359 through 1361, 1362 through 1364, 1365 through 1367, 1368 through 1370, 1371 through 1373, 1374 through 1376, 1377 through 1379, 1380 through 1382, 1383 through 1385, 1386 through 1388, 1389 through 1391, 1392 through 1394, 1395 through 1397, 1398 through 1400, 1401 through 1403, 1404 through 1406, 1407 through 1409, 1410 through 1412, 1413 through 1415, 1416 through 1418, 1419 through 1421, 1422 through 1424, 1425 through 1427, 1428 through 1430, 1431 through 1433, 1434 through 1436, 1437 through 1439, 1440 through 1442, 1443 through 1445, 1446 through 1448, 1449 through 1451, 1452 through 1454, 1455 through 1457, 1458 through 1460, 1461 through 1463, 1464 through 1466, 1467 through 1469, 1470 through 1472, 1473 through 1475, 1476 through 1478, 1479 through 1481, 1482 through 1484, 1485 through 1487, 1488 through 1490, 1491 through 1493, 1494 through 1496, 1497 through 1499, 1500 through 1502, 1503 through 1505, 1506 through 1508, 1509 through 1511, 1512 through 1514, 1515 through 1517, 1518 through 1520, 1521 through 1523, 1524 through 1526, 1527 through 1529, 1530 through 1532, 1533 through 1535, 1536 through 1538, 1539 through 1541, 1542 through 1544, 1545 through 1547, 1548 through 1550, 1551 through 1553, 1554 through 1556, 1557 through 1559, 1560 through 1562, 1563 through 1565, 1564 through 1566, 1567 through 1569, 1570 through 1572, 1573 through 1575, 1576 through 1578, 1579 through 1581, 1582 through 1584, 1585 through 1587, 1588 through 1590, 1591 through 1593, 1594 through 1596, 1597 through 1599, 1600 through 1602, 1603 through 1605, 1604 through 1606, 1607 through 1609, 1610 through 1612, 1613 through 1615, 1614 through 1616, 1617 through 1619, 1620 through 1622, 1621 through 1623, 1624 through 1626, 1627 through 1629, 1630 through 1632, 1631 through 1633, 1634 through 1636, 1637 through 1639, 1640 through 1642, 1641 through 1643, 1644 through 1646, 1647 through 1649, 1650 through 1652, 1651 through 1653, 1654 through 1656, 1657 through 1659, 1660 through 1662, 1661 through 1663, 1664 through 1666, 1665 through 1667, 1668 through 1670, 1669 through 1671, 1672 through 1674, 1673 through 1675, 1674 through 1676, 1675 through 1677, 1676 through 1678, 1677 through 1679, 1678 through 1680, 1679 through 1681, 1680 through 1682, 1681 through 1683, 1682 through 1684, 1683 through 1685, 1684 through 1686, 1685 through 1687, 1686 through 1688, 1687 through 1689, 1688 through 1690, 1689 through 1691, 1690 through 1692, 1691 through 1693, 1692 through 1694, 1693 through 1695, 1694 through 1696, 1695 through 1697, 1696 through 1698, 1697 through 1699, 1698 through 1700, 1699 through 1701, 1700 through 1702, 1701 through 1703, 1702 through 1704, 1703 through 1705, 1704 through 1706, 1705 through 1707, 1706 through 1708, 1707 through 1709, 1708 through 1710, 1709 through 1711, 1710 through 1712, 1711 through 1713, 1712 through 1714, 1713 through 1715, 1714 through 1716, 1715 through 1717, 1716 through 1718, 1717 through 1719, 1718 through 1720, 1719 through 1721, 1720 through 1722, 1721 through 1723, 1722 through 1724, 1723 through 1725, 1724 through 1726, 1725 through 1727, 1726 through 1728, 1727 through 1729, 1728 through 1730, 1729 through 1731, 1730 through 1732, 1731 through 1733, 1732 through 1734, 1733 through 1735, 1734 through 1736, 1735 through 1737, 1736 through 1738, 1737 through 1739, 1738 through 1740, 1739 through 1741, 1740 through 1742, 1741 through 1743, 1742 through 1744, 1743 through 1745, 1744 through 1746, 1745 through 1747, 1746 through 1748, 1747 through 1749, 1748 through 1750, 1749 through 1751, 1750 through 1752, 1751 through 1753, 1752 through 1754, 1753 through 1755, 1754 through 1756, 1755 through 1757, 1756 through 1758, 1757 through 1759, 1758 through 1760, 1759 through 1761, 1760 through 1762, 1761 through 1763, 1762 through 1764, 1763 through 1765, 1764 through 1766, 1765 through 1767, 1766 through 1768, 1767 through 1769, 1768 through 1770, 1769 through 1771, 1770 through 1772, 1771 through 1773, 1772 through 1774, 1773 through 1775, 1774 through 1776, 1775 through 1777, 1776 through 1778, 1777 through 1779, 1778 through 1780, 1779 through 1781, 1780 through 1782, 1781 through 1783, 1782 through 1784, 1783 through 1785, 1784 through 1786, 1785 through 1787, 1786 through 1788, 1787 through 1789, 1788 through 1790, 1789 through 1791, 1790 through 1792, 1791 through 1793, 1792 through 1794, 1793 through 1795, 1794 through 1796, 1795 through 1797, 1796 through 1798, 1797 through 1799, 1798 through 1800, 1799 through 1801, 1800 through 1802, 1801 through 1803, 1802 through 1804, 1803 through 1805, 1804 through 1806, 1805 through 1807, 1806 through 1808, 1807 through 1809, 1808 through 1810, 1809 through 1811, 1810 through 1812, 1811 through 1813, 1812 through 1814, 1813 through 1815, 1814 through 1816, 1815 through 1817, 1816 through 1818, 1817 through 1819, 1818 through 1820, 1819 through 1821, 1820 through 1822, 1821 through 1823, 1822 through 1824, 1823 through 1825, 1824 through 1826, 1825 through 1827, 1826 through 1828, 1827 through 1829, 1828 through 1830, 1829 through 1831, 1830 through 1832, 1831 through 1833, 1832 through 1834, 1833 through 1835, 1834 through 1836, 1835 through 1837, 1836 through 1838, 1837 through 1839, 1838 through 1840, 1839 through 1841, 1840 through 1842, 1841 through 1843, 1842 through 1844, 1843 through 1845, 1844 through 1846, 1845 through 1847, 1846 through 1848, 1847 through 1849, 1848 through 1850, 1849 through 1851, 1850 through 1852, 1851 through 1853, 1852 through 1854, 1853 through 1855, 1854 through 1856, 1855 through 1857, 1856 through 1858, 1857 through 1859, 1858 through 1860, 1859 through 1861, 1860 through 1862, 1861 through 1863, 1862 through 1864, 1863 through 1865, 1864 through 1866, 1865 through 1867, 1866 through 1868, 1867 through 1869, 1868 through 1870, 1869 through 1871, 1870 through 1872, 1871 through 1873, 1872 through 1874, 1873 through 1875, 1874 through 1876, 1875 through 1877, 1876 through 1878, 1877 through 1879, 1878 through 1880, 1879 through 1881, 1880 through 1882, 1881 through 1883, 1882 through 1884, 1883 through 1885, 1884 through 1886, 1885 through 1887, 1886 through 1888, 1887 through 1889, 1888 through 1890, 1889 through 1891, 1890 through 1892, 1891 through 1893, 1892 through 1894, 1893 through 1895, 1894 through 1896, 1895 through 1897, 1896 through 1898, 1897 through 1899, 1898 through 1900, 1899 through 1901, 1900 through 1902, 1901 through 1903, 1902 through 1904, 1903 through 1905, 1904 through 1906, 1905 through 1907, 1906 through 1908, 1907 through 1909, 1908 through 1910, 1909 through 1911, 1910 through 1912, 1911 through 1913, 1912 through 1914, 1913 through 1915, 1914 through 1916, 1915 through 1917, 1916 through 1918, 1917 through 1919, 1918 through 1920, 1919 through 1921, 1920 through 1922, 1921 through 1923, 1922 through 1924, 1923 through 1925, 1924 through 1926, 1925 through 1927, 1926 through 1928, 1927 through 1929, 1928 through 1930, 1929 through 1931, 1930 through 1932, 1931 through 1933, 1932 through 1934, 1933 through 1935, 1934 through 1936, 1935 through 1937, 1936 through 1938, 1937 through 1939, 1938 through 1940, 1939 through 1941, 1940 through 1942, 1941 through 1943, 1942 through 1944, 1943 through 1945, 1944 through 1946, 1945 through 1947, 1946 through 1948, 1947 through 1949, 1948 through 1950, 1949 through 1951, 1950 through 1952, 1951 through 1953, 1952 through 1954, 1953 through 1955, 1954 through 1956, 1955 through 1957, 1956 through 1958, 1957 through 1959, 1958 through 1960, 1959 through 1961, 1960 through 1962, 1961 through 1963, 1962 through 1964, 1963 through 1965, 1964 through 1966, 1965 through 1967, 1966 through 1968, 1967 through 1969, 1968 through 1970, 1969 through 1971, 1970 through 1972, 1971 through 1973, 1972 through 1974, 1973 through 1975, 1974 through 1976, 1975 through 1977, 1976 through 1978, 1977 through 1979, 1978 through 1980, 1979 through 1981, 1980 through 1982, 1981 through 1983, 1982 through 1984, 1983 through 1985, 1984 through 1986, 1985 through 1987, 1986 through 1988, 1987 through 1989, 1988 through 1990, 1989 through 1991, 1990 through 1992, 1991 through 1993, 1992 through 1994, 1993 through 1995, 1994 through 1996, 1995 through 1997, 1996 through 1998, 1997 through 1999, 1998 through 2000.

LOGAN COUNTY LAND ACQUISITION  
4225.530 Total Acres  
UNION COUNTY LAND ACQUISITION  
5192.022 Total Acres  
TOTAL LAND ACQUISITION  
9417.552 Total Acres



UNION COUNTY DEED REFERENCES  
Vol. 229, page 286; Vol. 230, pages 118, 411, 413; Vol. 237, page 496; Vol. 238, pages 192, 369, 405, 408; Vol. 239, pages 42, 45, 48, 212, 216, 231, 241, 283; Vol. 240, pages 43, 112, 450, 462, 465; Vol. 241, pages 51, 350; Vol. 243, page 180; Vol. 244, pages 375, 434, 441, 446; Vol. 245, pages 237, 327; Vol. 246, pages 189, 314; Vol. 250, page 504, and in Logan County Deed Records Vol. 339, page 727

LOGAN COUNTY DEED REFERENCES  
Vol. 315, pages 841, 843, 999; Vol. 316, pages 1, 5, 33, 79, 83, 159, 162, 351, 355, 442, 445, 447, 455, 601, 671, 673, 755, 800, 896, 975, 999, 1001; Vol. 317, pages 332, 336, 340, 534, 538, 724, 728, 732; Vol. 318, pages 51, 73, 77, 87, 90, 92, 252, 490, 494, 517, 830, 832, 810; Vol. 319, page 163; Vol. 320, pages 158, 262; Vol. 321, pages 233, 238, 243, 247, 252, 257, 262, 274, 468; Vol. 322, page 196; Vol. 324, page 837; Vol. 325, pages 473, 475, 476, 923; Vol. 326, pages 332, 682, 795; Vol. 327, page 422; Vol. 328, page 317; Vol. 332, page 680; Vol. 360, page 6; and in Union County Deed Records Vol. 229, pages 188, 286, 302, 305; Vol. 230, page 51; Vol. 231, page 40; Vol. 232, page 124; Vol. 234, page 3; Vol. 237, page 354; Vol. 238, page 257; Vol. 244, page 164

**LEGEND**

- Transportation Research Center of Ohio property line.
- Transportation Research Center of Ohio property line angle points.
- Monuments found but not used.
- County Line monuments and other monuments found and used.
- Transportation Research Center of Ohio property line monuments found and referenced to property corners.
- Transportation Research Center of Ohio intermediate property line monuments.
- School district line
- 2674.007 Denotes acreage for school district use only Unless shown otherwise

For vertical and horizontal control, and easement details not shown hereon, reference is made to documents on file in the office of Page Engineering, Inc., in Marysville, Ohio.

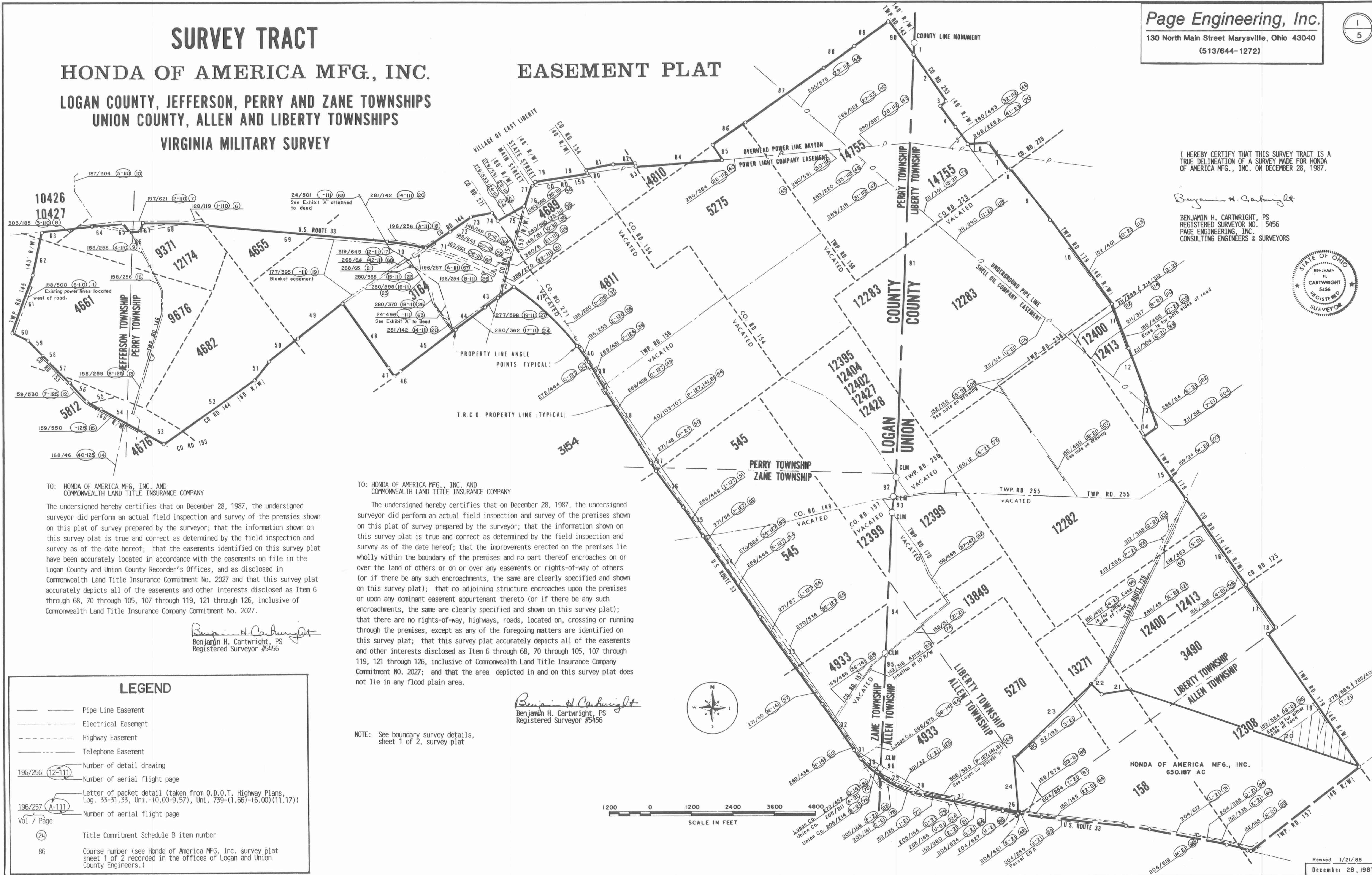
MON. NO.	ELEVATION
41	1159.405
42	1161.098
43	1201.038
44	1243.002
45	1279.262
46	1296.354
47	1402.371
48	1426.532
49	1459.510
50	1472.598
51	1501.654
52	1521.654
53	1529.665
54	1531.654
55	1529.665
56	1529.665
57	1529.665
58	1529.665
59	1529.665
60	1529.665
61	1529.665
62	1529.665
63	1529.665
64	1529.665
65	1529.665
66	1529.665
67	1529.665
68	1529.665
69	1529.665
70	1529.665
71	1529.665
72	1529.665
73	1529.665

**SURVEY TRACT**  
**HONDA OF AMERICA MFG., INC.**  
 LOGAN COUNTY, JEFFERSON, PERRY AND ZANE TOWNSHIPS  
 UNION COUNTY, ALLEN AND LIBERTY TOWNSHIPS  
 VIRGINIA MILITARY SURVEY

**EASEMENT PLAT**

I HEREBY CERTIFY THAT THIS SURVEY TRACT IS A TRUE DELINEATION OF A SURVEY MADE FOR HONDA OF AMERICA MFG., INC. ON DECEMBER 28, 1987.

*Benjamin H. Cartwright*  
 BENJAMIN H. CARTWRIGHT, PS  
 REGISTERED SURVEYOR NO. 5456  
 PAGE ENGINEERING, INC.  
 CONSULTING ENGINEERS & SURVEYORS



TO: HONDA OF AMERICA MFG., INC. AND COMMONWEALTH LAND TITLE INSURANCE COMPANY

The undersigned hereby certifies that on December 28, 1987, the undersigned surveyor did perform an actual field inspection and survey of the premises shown on this plat of survey prepared by the surveyor; that the information shown on this survey plat is true and correct as determined by the field inspection and survey as of the date hereof; that the easements identified on this survey plat have been accurately located in accordance with the easements on file in the Logan County and Union County Recorder's Offices, and as disclosed in Commonwealth Land Title Insurance Commitment No. 2027 and that this survey plat accurately depicts all of the easements and other interests disclosed as Item 6 through 68, 70 through 105, 107 through 119, 121 through 126, inclusive of Commonwealth Land Title Insurance Company Commitment No. 2027.

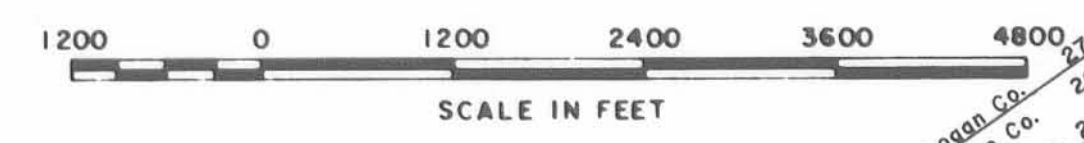
*Benjamin H. Cartwright*  
 Benjamin H. Cartwright, PS  
 Registered Surveyor #5456

TO: HONDA OF AMERICA MFG., INC. AND COMMONWEALTH LAND TITLE INSURANCE COMPANY

The undersigned hereby certifies that on December 28, 1987, the undersigned surveyor did perform an actual field inspection and survey of the premises shown on this survey plat is true and correct as determined by the field inspection and survey as of the date hereof; that the improvements erected on the premises lie wholly within the boundary of the premises and no part thereof encroaches on or over the land of others or on or over any easements or rights-of-way of others (or if there be any such encroachments, the same are clearly specified and shown on this survey plat); that no adjoining structure encroaches upon the premises or upon any dominant easement appurtenant thereto (or if there be any such encroachments, the same are clearly specified and shown on this survey plat); that there are no rights-of-way, highways, roads, located on, crossing or running through the premises, except as any of the foregoing matters are identified on this survey plat; that this survey plat accurately depicts all of the easements and other interests disclosed as Item 6 through 68, 70 through 105, 107 through 119, 121 through 126, inclusive of Commonwealth Land Title Insurance Company Commitment NO. 2027; and that the area depicted in and on this survey plat does not lie in any flood plain area.

*Benjamin H. Cartwright*  
 Benjamin H. Cartwright, PS  
 Registered Surveyor #5456

NOTE: See boundary survey details, sheet 1 of 2, survey plat



**LEGEND**

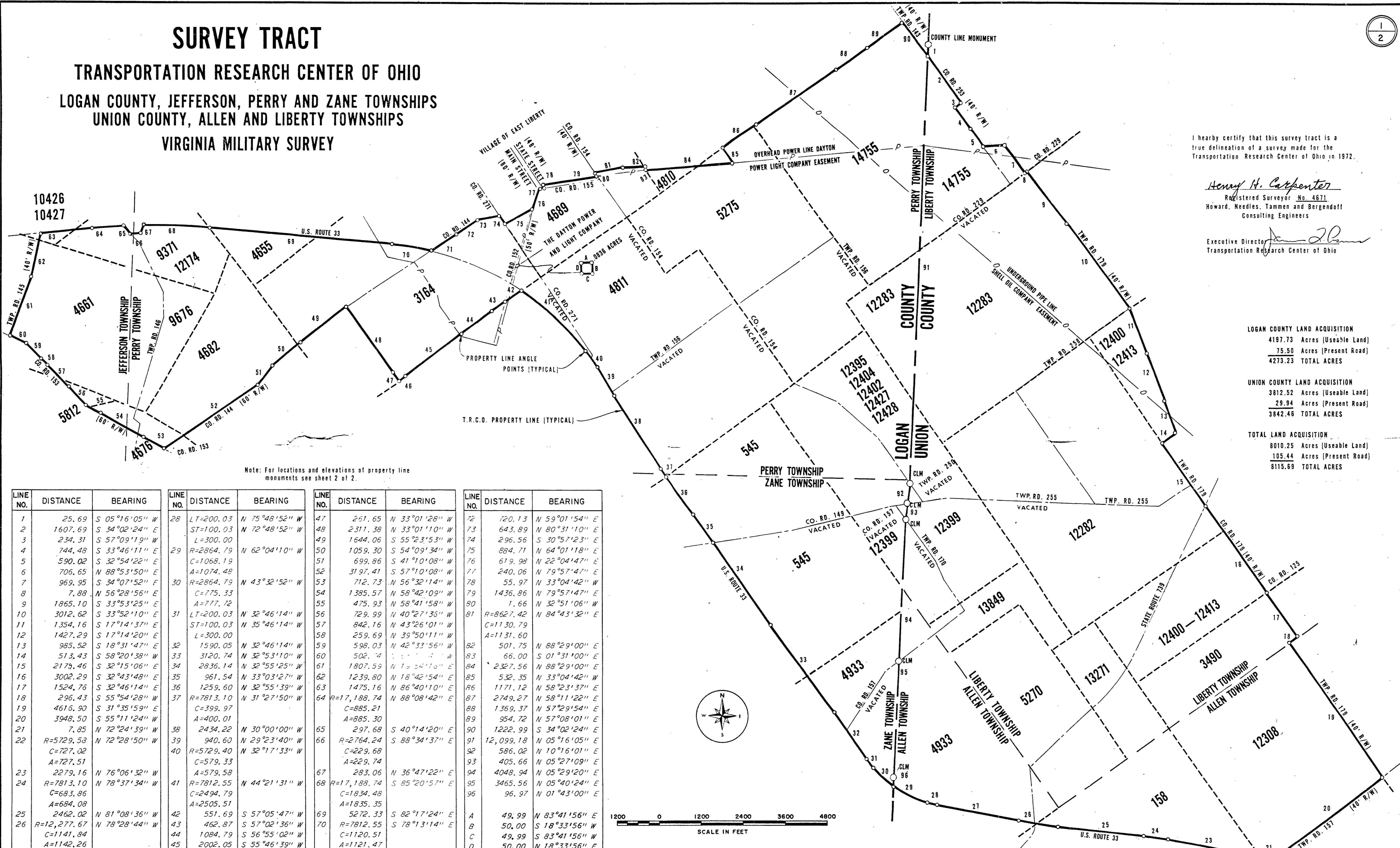
- Pipe Line Easement
- Electrical Easement
- Highway Easement
- Telephone Easement
- 196/256 (12-11) Number of detail drawing
- Number of aerial flight page
- Letter of packet detail (taken from O.D.O.T. Highway Plans, Log. 33-31.33, Uni.-(0.00-9.57), Uni. 739-(1.66)-(6.00)(11.17))
- 196/257 (A-11) Number of aerial flight page
- Vol / Page
- (24) Title Commitment Schedule B item number
- 86 Course number (see Honda of America MFG. Inc. survey plat sheet 1 of 2 recorded in the offices of Logan and Union County Engineers.)

# SURVEY TRACT

## TRANSPORTATION RESEARCH CENTER OF OHIO

LOGAN COUNTY, JEFFERSON, PERRY AND ZANE TOWNSHIPS  
UNION COUNTY, ALLEN AND LIBERTY TOWNSHIPS

### VIRGINIA MILITARY SURVEY



I hereby certify that this survey tract is a true delineation of a survey made for the Transportation Research Center of Ohio in 1972.

*Henry H. Carpenter*  
Registered Surveyor No. 4671  
Howard, Needles, Tammen and Bergendoff  
Consulting Engineers

Executive Director *[Signature]*  
Transportation Research Center of Ohio

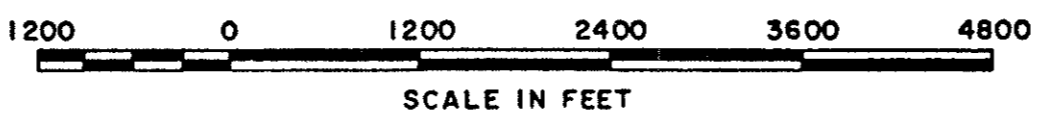
LOGAN COUNTY LAND ACQUISITION  
4197.73 Acres (Useable Land)  
75.50 Acres (Present Road)  
4273.23 TOTAL ACRES

UNION COUNTY LAND ACQUISITION  
3812.52 Acres (Useable Land)  
29.94 Acres (Present Road)  
3842.46 TOTAL ACRES

TOTAL LAND ACQUISITION  
8010.25 Acres (Useable Land)  
105.44 Acres (Present Road)  
8115.69 TOTAL ACRES

Note: For locations and elevations of property line monuments see sheet 2 of 2.

LINE NO.	DISTANCE	BEARING	LINE NO.	DISTANCE	BEARING	LINE NO.	DISTANCE	BEARING	LINE NO.	DISTANCE	BEARING
1	25.69	S 05°16'05" W	28	LT=200.03	N 75°48'52" W	47	251.65	N 33°01'28" W	72	720.13	N 59°01'54" E
2	1607.69	S 34°02'24" E	29	ST=100.03	N 72°48'52" W	48	2311.38	N 33°01'10" W	73	643.89	N 80°31'10" E
3	234.31	S 57°09'19" W	30	L=300.00	N 62°04'10" W	49	1644.06	S 55°23'53" W	74	296.56	S 30°57'23" E
4	744.48	S 33°46'11" E	31	R=2864.79	N 43°32'52" W	50	1059.30	S 54°09'34" W	75	884.71	N 64°01'18" E
5	590.02	S 32°54'22" E	32	C=1068.19	N 32°46'14" W	51	699.86	S 41°10'08" W	76	619.98	N 22°04'47" E
6	706.65	N 88°53'50" E	33	A=1074.48	N 35°46'14" W	52	3197.41	S 57°10'08" W	77	240.06	N 79°57'47" E
7	969.95	S 34°07'52" E	34	R=2864.79	N 32°55'12" W	53	712.73	N 56°32'14" W	78	55.97	N 33°04'42" W
8	7.88	N 56°28'56" E	35	C=775.33	N 30°00'00" W	54	1385.57	N 58°42'09" W	79	1436.86	N 79°57'47" E
9	1865.10	S 33°53'25" E	36	A=777.72	N 29°23'40" W	55	475.93	N 58°41'58" W	80	1.66	N 32°51'06" W
10	3012.62	S 33°52'10" E	37	LT=200.03	N 32°46'14" W	56	729.99	N 40°27'35" W	81	R=8627.42	N 84°43'32" E
11	1354.16	S 17°14'37" E	38	ST=100.03	N 35°46'14" W	57	842.16	N 43°26'01" W	82	C=1130.79	N 88°29'00" E
12	1427.29	S 17°14'20" E	39	L=300.00	N 32°46'14" W	58	259.69	N 39°50'11" W	83	A=1131.60	S 01°31'00" E
13	985.52	S 18°31'47" E	40	1590.05	N 32°46'14" W	59	598.03	N 42°33'56" W	84	66.00	N 88°29'00" E
14	513.43	S 58°20'38" W	41	3120.74	N 32°53'10" W	60	502.74	N 18°42'54" W	85	2327.56	N 33°04'42" W
15	2179.46	S 32°15'06" E	42	2836.14	N 32°55'12" W	61	1807.59	N 18°42'54" W	86	532.35	N 58°23'37" E
16	3002.29	S 32°43'48" E	43	961.54	N 33°03'12" W	62	1239.80	N 86°40'10" E	87	1171.12	N 58°11'22" E
17	1524.76	S 32°46'14" E	44	1259.60	N 31°27'15" W	63	1475.16	N 88°08'42" E	88	2749.27	N 57°29'54" E
18	296.43	S 55°54'28" W	45	R=7813.10	N 31°27'15" W	64	R=17,188.74	N 85°20'57" E	89	1369.37	N 57°08'01" E
19	4616.90	S 31°35'59" E	46	C=399.97	N 30°00'00" W	65	A=885.30	S 40°14'20" E	90	954.72	S 34°02'24" E
20	3948.50	S 55°11'24" W	47	A=400.01	N 29°23'40" W	66	297.68	S 88°34'37" E	91	1222.99	N 05°16'05" E
21	7.85	N 72°24'39" W	48	2434.22	N 32°17'33" W	67	R=2764.24	N 32°17'33" W	92	12,099.18	N 10°16'01" E
22	R=5729.53	N 72°28'50" W	49	C=727.02	N 30°00'00" W	68	C=229.68	N 36°47'22" E	93	586.02	N 05°27'09" E
	A=727.71		50	A=579.58	N 44°21'31" W	69	A=229.74	N 36°47'22" E	94	405.66	N 05°29'20" E
23	2279.16	N 76°06'32" W	51	R=7812.55	N 44°21'31" W	70	R=17,188.74	N 85°20'57" E	95	4048.94	N 05°29'20" E
24	R=7813.10	N 78°37'34" W	52	C=2494.79	N 30°00'00" W	71	C=1834.48	S 82°17'24" E	96	3465.56	N 05°40'24" E
	A=684.08		53	A=2505.51	S 57°05'47" W		A=1835.35	S 78°13'14" E		96.97	N 01°43'00" E
25	2462.02	N 81°08'36" W	54	551.69	S 57°02'36" W		A=1120.51	S 49.99			N 83°41'56" E
26	R=12,277.67	N 78°28'44" W	55	462.87	S 56°55'02" W		A=1121.47	50.00			S 18°33'56" W
	C=1141.84		56	1084.79	S 55°46'39" W		855.25	49.99			S 83°41'56" W
	A=1142.26		57	2002.05	S 51°33'02" W			50.00			N 18°33'56" E
27	2345.24	N 75°48'52" W	58	220.26	S 51°33'02" W						



HOWARD, NEEDLES, TAMMEN & BERGENDOFF  
CONSULTING ENGINEERS  
CLEVELAND, OHIO  
**HNTB**