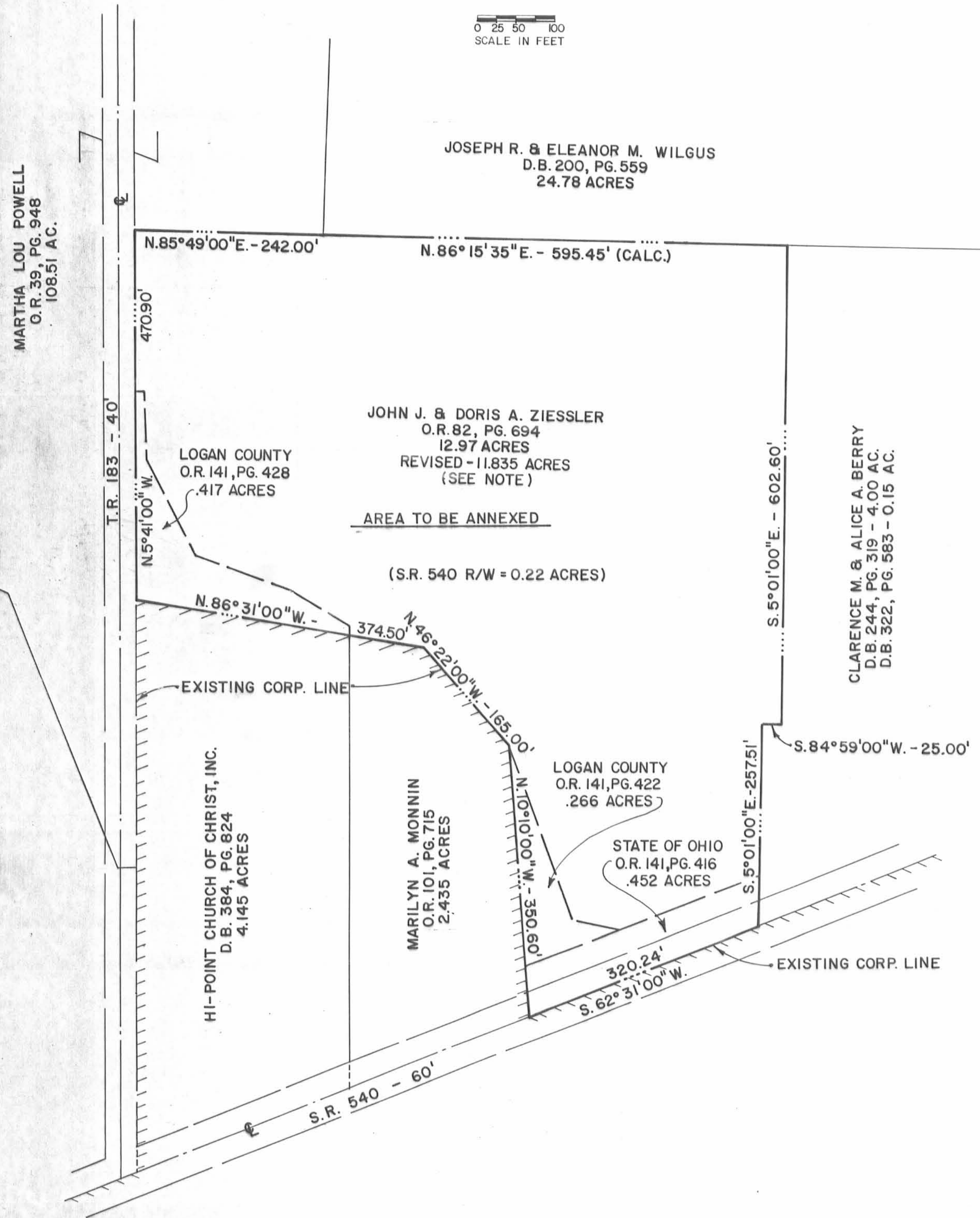


ANNEXATION PLAT

TERRITORY TO BE ANNEXED TO THE CITY OF BELLEFONTAINE
LOCATED IN V.M.S 3683, JEFFERSON TOWNSHIP,
LOGAN COUNTY, OHIO



NOTE:
MAP REVISED 11-25-91 TO INDICATE
LAND PURCHASED BY THE STATE OF
OHIO, ON 11-21-91, FROM JOHN J. AND
DORIS A. ZIESSLER, H/W, FOR THE
STATE OF OHIO AND LOGAN COUNTY.
-MAP ROOM-
J.C.H.

PLAT PREPARED BY: Richard A. Bruce
RICHARD A. BRUCE, P.E., P.S.
435 WEST PARKWOOD
SIDNEY, OHIO 45365



SITUATED IN V.M.S. 3683, JEFFERSON TOWNSHIP, LOGAN COUNTY, OHIO, BEING THAT LAND IN THE NAME OF JOHN J. AND DORIS A. ZIESSLER AS RECORDED IN O.R. 82, PAGE 694, BOUNDED AND MORE PARTICULARLY DESCRIBED AS FOLLOWS:
BEGINNING AT AN ANGLE POINT IN THE PRESENT CITY OF BELLEFONTAINE CORPORATION LINE IN THE CENTER OF S.R. 540 AT THE SOUTHEAST CORNER OF MARILYN A. MONNIN'S 2.435 ACRE TRACT, O.R. 101, PAGE 715.
THENCE, WITH THE EAST LINE OF SAID MONNIN, ALSO THE PRESENT CORPORATION LINE, N. 10° 10' 00" W. 350.60 FEET TO A POINT.
THENCE, CONTINUING WITH SAID EAST LINE AND SAID CORPORATION LINE, N. 46° 22' 00" W. 165.00 FEET TO A POINT.
THENCE, WITH THE NORTH LINE OF SAID MONNIN AND THE NORTH LINE OF HI-POINT CHURCH OF CHRIST, INC.'S 4.145 ACRE TRACT, D.B. 384, PAGE 824, ALSO THE PRESENT CORPORATION LINE, N. 86° 31' 00" W. 374.50 FEET TO THE EAST LINE OF T.R. 183, ALSO AN ANGLE IN THE PRESENT CORPORATION LINE.
THENCE, WITH THE EAST LINE OF T.R. 183, N. 5° 41' 00" W. 470.90 FEET TO A POINT IN THE SOUTH LINE OF MARTHA LOU POWELL'S 108.51 ACRE TRACT, O.R. 39, PAGE 948.
THENCE, WITH THE SOUTH LINE OF SAID POWELL, N. 85° 49' 00" E. 242.00 FEET TO THE SOUTHWEST CORNER OF JOSEPH R. AND ELEANOR M. WILGUS' 24.78 ACRE TRACT, D.B. 200, PAGE 559.
THENCE, WITH THE SOUTH LINE OF SAID WILGUS, N. 86° 15' 55" E. 595.45 FEET (CALC.) TO THE NORTHWEST CORNER OF CLARENCE M. AND ALICE A. BERRY'S 4.00 ACRE TRACT, D.B. 244, PAGE 319.
THENCE, WITH THE WEST LINE OF SAID BERRY, S. 5° 01' 00" E. 602.60 FEET TO THE NORTHEAST CORNER OF SAID BERRY'S 0.15 ACRE TRACT, D.B. 322, PAGE 583.
THENCE, WITH THE NORTH LINE OF SAID BERRY'S 0.15 ACRE TRACT, S. 84° 59' 00" W. 25.00 FEET TO THE NORTHWEST CORNER OF SAID 0.15 ACRE TRACT.
THENCE, WITH THE EAST LINE OF SAID 0.15 ACRE TRACT, S. 5° 01' 00" E. 257.51 FEET TO THE CENTER OF S.R. 540, ALSO THE PRESENT CORPORATION LINE.
THENCE, WITH THE CENTER OF S.R. 540, ALSO THE PRESENT CORPORATION LINE, S. 62° 31' 00" W. 320.24 FEET TO THE POINT OF BEGINNING.
CONTAINING 12.97 ACRES, MORE OR LESS, OF WHICH 0.22 ACRES ARE LOCATED IN S.R. 540 RIGHT-OF-WAY.
THIS DESCRIPTION PREPARED FROM EXISTING RECORDS AND NOT AN ACTUAL FIELD SURVEY.

PREAPPROVAL JCH 6-12-91
PLAT CHECKED Jan L. H. 11-21-91

CITY OF BELLEFONTAINE OFFICERS:

PLANNING COMMISSION CHAIRMAN
George A. Weeks DATE 10-15-91
MAYOR
Richard J. Vicario DATE 10-01-91
PRESIDENT OF COUNCIL
William R. Patterson DATE 9-30-91

ORDINANCE NO. 91-82 (9-24-91)

CITY ENGINEER
Felty L. N. B. E. DATE 10/10/91

Ardythie Predmore
Clerk of Council DATE 11/19/91

JEFFERSON TOWNSHIP TRUSTEES:
John W. Winland DATE 10/29/91
Justin Butler DATE 11-19-91

LOGAN COUNTY OFFICERS:

LOGAN COUNTY ENGINEER
Chester R. Kurtz, P.E., P.S. DATE 10-30-91

LOGAN, UNION, CHAMPAIGN REGIONAL PLANNING COMMISSION
Barbara L. Scott DATE 10-10-91

LOGAN COUNTY COMMISSIONERS
John A. Jeffrey DATE 10/22/91
Donald C. Kinnis DATE 11-22-91
George W. Clayton DATE 10-22-91

TRANSFERRED THIS 27TH DAY OF NOVEMBER, 1991.
Frank Jones
AUDITOR, LOGAN COUNTY, OHIO

RECORDED IN PLAT CABINET A SLIDE 735 B, RECEIVED FOR
RECORD AT 11:07 O'CLOCK AM THIS DAY 27th OF November, 1991.
Carolyn Collins
RECORDER, LOGAN COUNTY, OHIO

337207