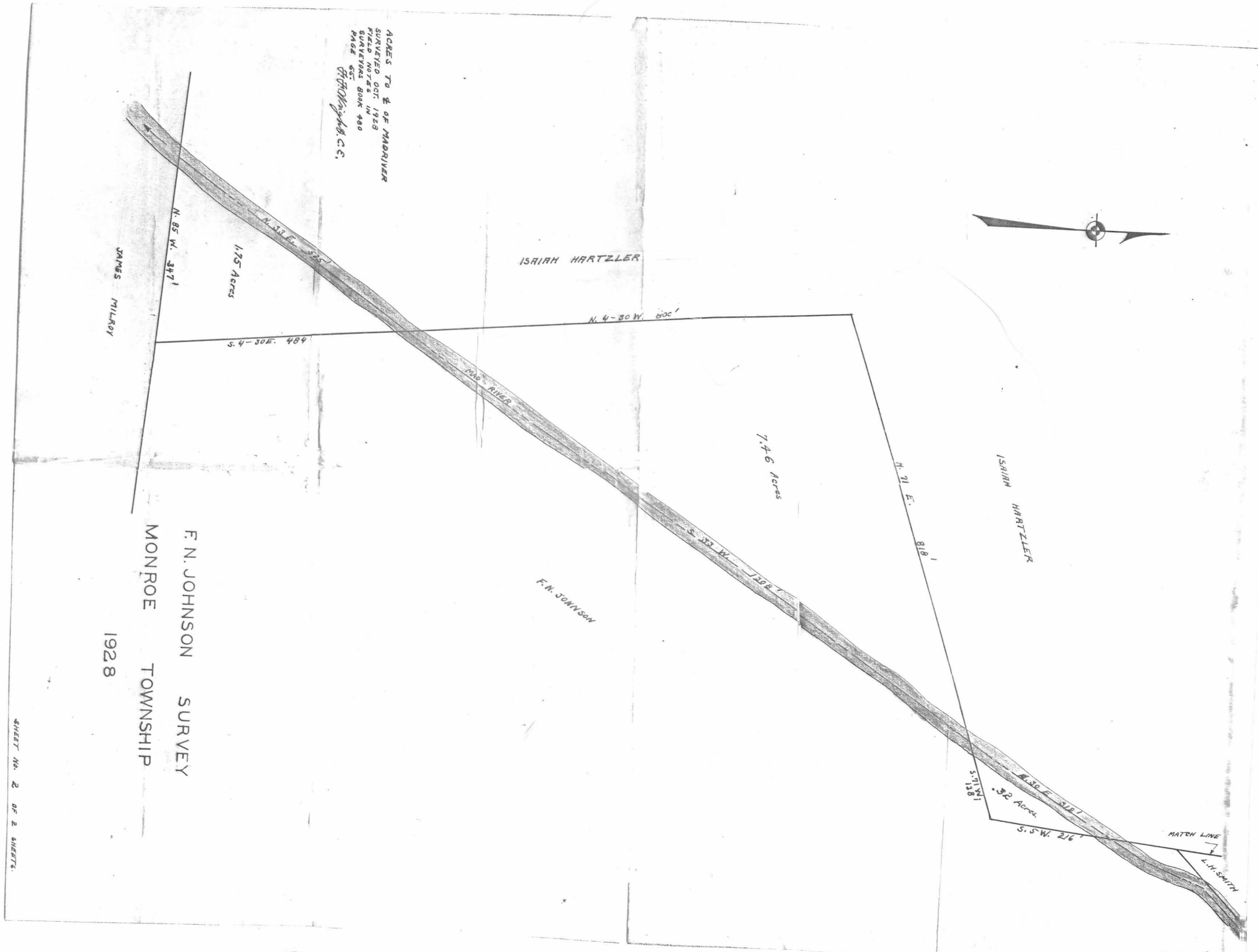




ACRES TO E OF MAD RIVER
SURVEYED OCT. 1928
FILED NOTES IN
SURVEYORS BOOK 480
PAGE 651
D. F. McLaughlin, C.E.



JAMES MILROY

ISAIRH HARTZLER

ISAIRH HARTZLER

F. N. JOHNSON

F. N. JOHNSON SURVEY
MONROE TOWNSHIP
1928

SHEET NO. 2 OF 2 SHEETS.