

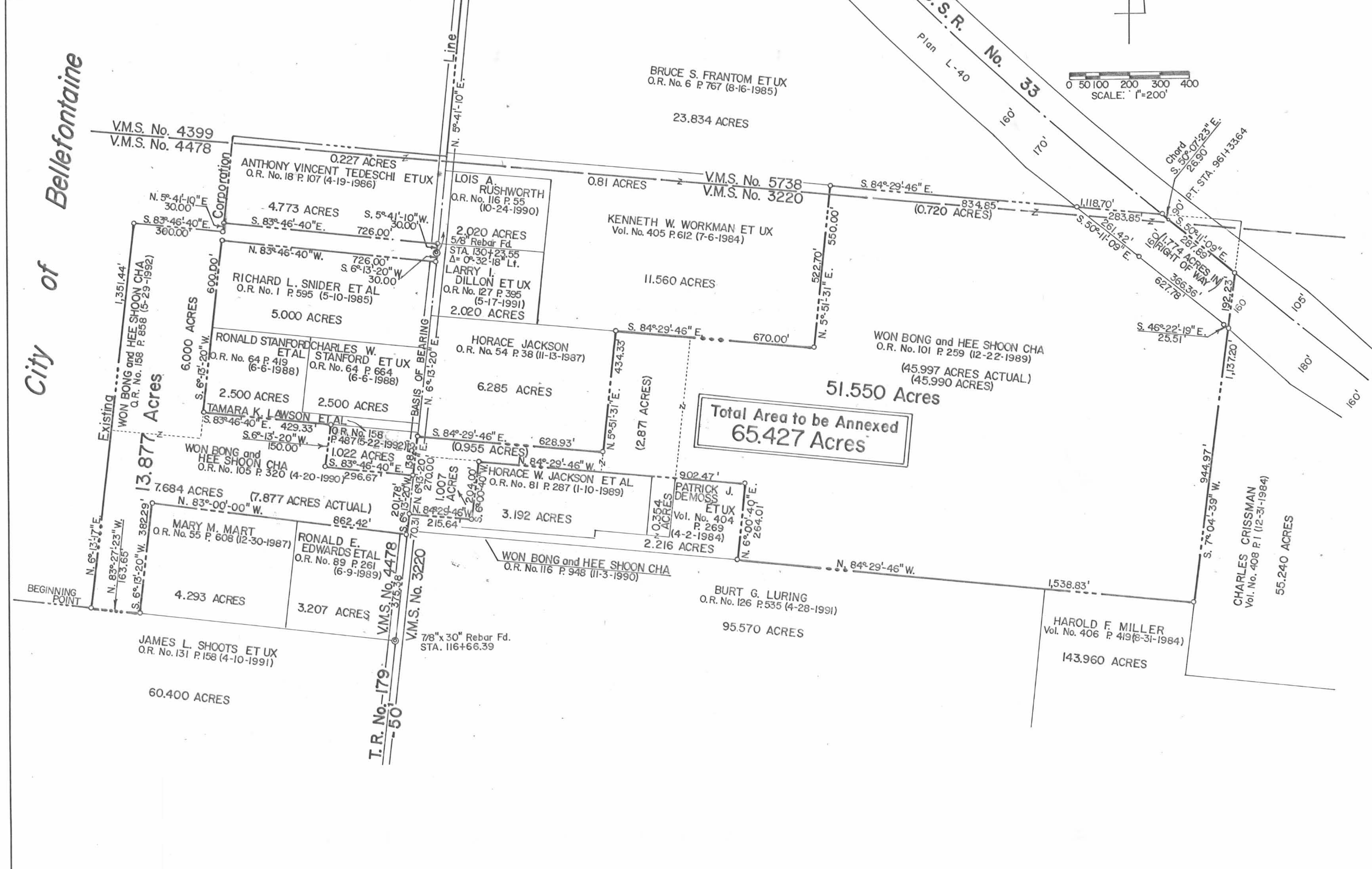
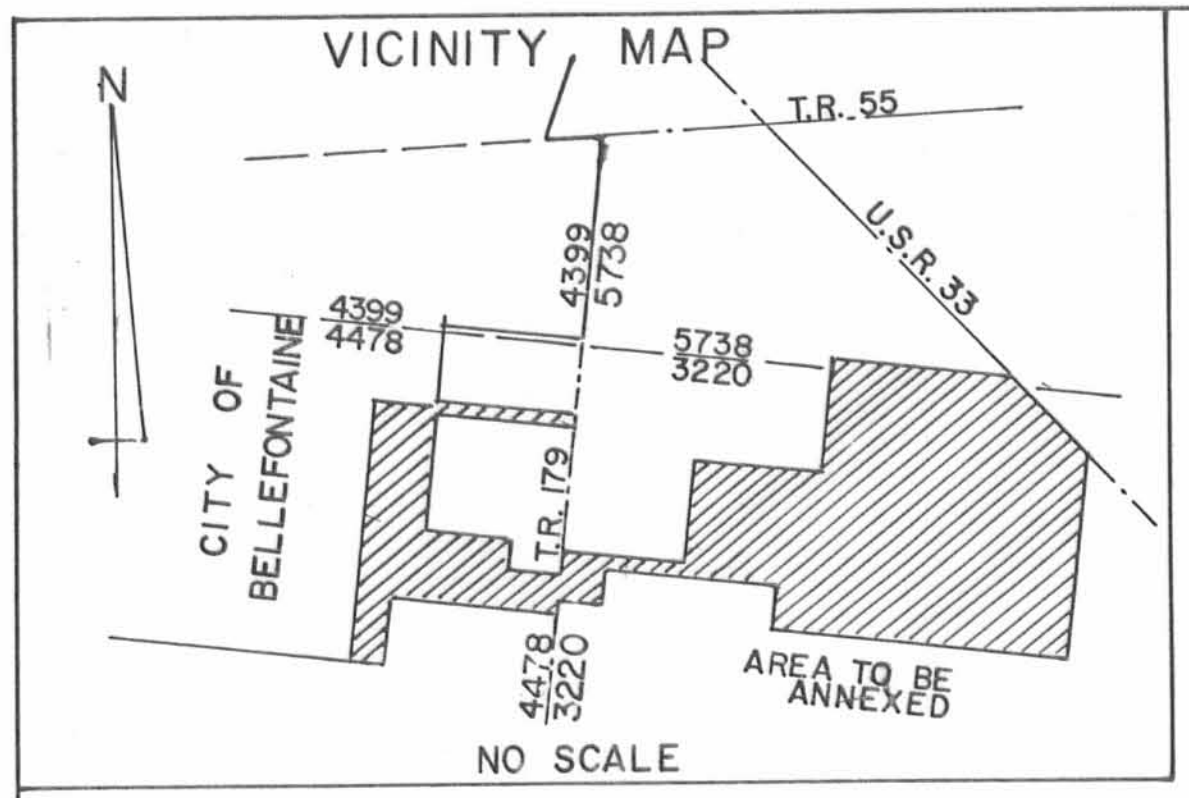
WON BONG CHA ANNEXATION MAP

Territory To Be Annexed To The City Of Bellefontaine
 Located In V.M.S. No. 3220, V.M.S. No. 4478 And V.M.S. No. 5738
 Jefferson Township, Logan County, Ohio

THE FOLLOWING DESCRIBED REAL ESTATE SITUATED IN THE TOWNSHIP OF JEFFERSON, COUNTY OF LOGAN, STATE OF OHIO AND BEING A PART OF V.M.S. NO. 3220, V.M.S. NO. 4478 AND V.M.S. NO. 5738 AND BEING THOSE TRACTS IN THE NAME OF WON BONG CHA AND HEE SHOON CHA, HUSBAND AND WIFE AS RECORDED IN O.R. NO. 101 P. 259 (12-22-1989)-50,536 ACRES, O.R. NO. 105 P. 320 (4-20-1990)-7,684 ACRES, O.R. NO. 116 P. 948 (11-3-1990)-1,007 ACRES AND O.R. NO. 159 P. 858 (5-29-1992)-6,000 ACRES, LOGAN COUNTY RECORDERS OFFICE AND BEING MORE PARTICULARLY DESCRIBED AS FOLLOWS:

BEGINNING AT AN ANGLE POINT IN THE PRESENT CITY OF BELLEFONTAINE CORPORATION LINE AT THE SOUTHWEST CORNER TO WON BONG CHA'S PRESENT 7,684 ACRE TRACT, O.R. NO. 105 P. 320 (4-20-1990) AND IN THE NORTH LINE OF JAMES L. SHOOTS' PRESENT 60,400 ACRE TRACT, O.R. NO. 131 P. 158 (4-10-1991);
 THENCE WITH THE PRESENT CORPORATION LINE AND THE WEST LINE OF CHA'S 7,684 ACRE TRACT AND CHA'S PRESENT 6,000 ACRE TRACT, O.R. NO. 159 P. 858 (5-29-1992), N. 6°-13'-20" E. 1,351.44 FEET TO THE NORTHWEST CORNER OF CHA'S 6,000 ACRE TRACT AND AN ANGLE POINT IN SAID CORPORATION LINE;
 THENCE WITH THE PRESENT CORPORATION LINE AND A NORTH LINE TO CHA'S 6,000 ACRE TRACT, S. 83°-46'-40" E. 300.00 FEET TO AN ANGLE POINT IN SAID CORPORATION LINE;
 THENCE CONTINUING WITH SAID CORPORATION LINE AND A WEST LINE OF CHA'S TRACT, N. 5°-41'-10" E. 30.00 FEET TO THE SOUTH-WEST CORNER OF ANTHONY VINCENT TEDESCHI'S PRESENT 5,000 ACRE TRACT, O.R. NO. 18 P. 107 (4-19-1986);
 THENCE WITH TEDESCHI'S SOUTH LINE, S. 83°-46'-40" E. 726.00 FEET TO THE CENTERLINE OF T.R. NO. 179, AT THE SOUTH-EAST CORNER TO TEDESCHI'S TRACT;
 THENCE WITH THE CENTERLINE OF T.R. NO. 179, S. 5°-41'-10" W. 30.00 FEET TO AN ANGLE IN SAID ROAD;
 THENCE AGAIN WITH THE CENTERLINE OF T.R. NO. 179, S. 6°-13'-20" W. 30.00 FEET TO THE NORTHEAST CORNER TO RICHARD L. SNIDER'S PRESENT 5,000 ACRE TRACT, O.R. NO. 1 P. 595 (5-10-1985);
 THENCE WITH SNIDER'S NORTH LINE, N. 83°-46'-40" W. 726.00 FEET TO SNIDER'S NORTHWEST CORNER;
 THENCE WITH SNIDER'S WEST LINE AND THE WEST LINE OF RONALD STANFORD'S PRESENT 2,500 ACRE TRACT, O.R. NO. 64 P. 419 (6-6-1988), S. 6°-13'-20" W. 600.00 FEET TO STANFORD'S SOUTHWEST CORNER;
 THENCE WITH STANFORD'S SOUTH LINE, S. 83°-46'-40" E. 429.33 FEET TO THE NORTHWEST CORNER TO TAMARA K. LAWSON'S PRESENT 1,022 ACRE TRACT, O.R. NO. 158 P. 487 (6-22-1992);
 THENCE WITH LAWSON'S WEST LINE, S. 6°-13'-20" W. 150.00 FEET TO LAWSON'S SOUTHWEST CORNER;
 THENCE WITH LAWSON'S SOUTH LINE, S. 83°-46'-40" E. 296.67 FEET TO THE CENTERLINE OF T.R. NO. 179 AT THE SOUTHEAST TO LAWSON'S TRACT;
 THENCE WITH THE CENTERLINE OF T.R. NO. 179, N. 6°-13'-20" E. 138.53 FEET TO THE SOUTHWEST CORNER TO HORACE JACKSON'S PRESENT 6,285 ACRE TRACT, O.R. NO. 54 P. 38 (11-13-1987), (NOTE: THE CENTERLINE OF T.R. NO. 179 IS THE BASIS OF BEARING FOR THIS DESCRIPTION - N. 6°-13'-20" E.);
 THENCE WITH JACKSON'S SOUTH LINE, S. 84°-29'-46" E. 628.93 FEET TO JACKSON'S SOUTHEAST CORNER;
 THENCE WITH JACKSON'S EAST LINE, N. 5°-51'-31" E. 434.33 FEET TO JACKSON'S NORTHEAST CORNER IN THE SOUTH LINE OF KENNETH W. WORKMAN'S PRESENT 11,560 ACRE TRACT, VOL. NO. 405 P. 612 (7-6-1984);
 THENCE WITH WORKMAN'S SOUTH LINE, S. 84°-29'-46" E. 670.00 FEET TO WORKMAN'S SOUTHEAST CORNER;
 THENCE WITH WORKMAN'S EAST LINE, N. 5°-51'-31" E. 550.00 FEET TO THE NORTHEAST CORNER TO WORKMAN'S TRACT AND IN THE SOUTH LINE OF BRUCE S. FRANTOM'S PRESENT 23,834 ACRE TRACT, O.R. NO. 6 P. 767 (8-16-1985), PASSING THROUGH THE LINE BETWEEN V.M.S. NO. 3220 AND V.M.S. NO. 5738 AT 522.70 FEET;
 THENCE WITH FRANTOM'S SOUTH LINE, S. 84°-29'-46" E. 1,118.70 FEET TO THE CENTERLINE OF U.S.R. NO. 33 ON A CURVE TO THE LEFT, HAVING A RADIUS OF 12,277.67 FEET, PASSING THROUGH THE WEST RIGHT OF WAY LINE AT 834.85 FEET;
 THENCE WITH CENTERLINE OF U.S.R. NO. 33 ON SAID CURVE, WITH A CHORD, S. 50°-07'-23" E. 26.90 FEET TO THE POINT OF TANGENCY;
 THENCE CONTINUING WITH THE CENTERLINE OF U.S.R. NO. 33, S. 50°-11'-09" E. 287.89 FEET TO THE WEST LINE OF CHARLES CRISSMAN'S PRESENT 55,240 ACRE TRACT, VOL. NO. 408 P. 1 (12-31-1984);
 THENCE WITH CRISSMAN'S WEST LINE, S. 7°-04'-39" W. 1,137.20 FEET TO A NORTHEAST CORNER TO HAROLD F. MILLER'S PRESENT 143,960 ACRE TRACT, VOL. NO. 406 P. 419 (6-31-1984), PASSING THROUGH THE WEST RIGHT OF WAY LINE AT 192.23 FEET;
 THENCE WITH MILLER'S NORTH LINE AND THE NORTH LINE OF BURT G. LURING'S PRESENT 95,570 ACRE TRACT, O.R. NO. 126 P. 535 (4-28-1991), N. 84°-29'-46" W. 1,538.83 FEET TO THE SOUTHEAST CORNER TO PATRICK J. DEMOSS' PRESENT 2,216 ACRE TRACT, VOL. NO. 404 P. 269 (4-2-1984);
 THENCE WITH DEMOSS' EAST LINE, N. 6°-00'-40" E. 264.01 FEET TO THE NORTHEAST CORNER TO DEMOSS;
 THENCE WITH DEMOSS' NORTH LINE AND THE NORTH LINE OF HORACE W. JACKSON'S PRESENT 3,192 ACRE TRACT, O.R. NO. 81 P. 287 (1-10-1989), N. 84°-29'-46" W. 902.47 FEET TO A NORTHWEST CORNER TO JACKSON'S TRACT;
 THENCE WITH A WEST LINE OF JACKSON'S TRACT, S. 6°-00'-40" W. 204.00 FEET TO A CORNER TO JACKSON'S TRACT;
 THENCE WITH A NORTH LINE OF JACKSON'S TRACT, N. 84°-29'-46" W. 215.64 FEET TO THE CENTERLINE OF T.R. NO. 179 AT A NORTHWEST CORNER TO JACKSON'S TRACT;
 THENCE WITH THE CENTERLINE OF T.R. NO. 179, S. 6°-13'-20" W. 70.31 FEET TO THE NORTHEAST CORNER TO RONALD E. EDWARDS' PRESENT 3,207 ACRE TRACT, O.R. NO. 89 P. 261 (6-9-1989);
 THENCE WITH THE NORTH LINE OF EDWARDS' TRACT AND THE NORTH LINE OF MARY M. MART'S PRESENT 4,293 ACRE TRACT, O.R. NO. 55 P. 608 (12-30-1987), N. 83°-00'-00" W. 862.42 FEET TO MART'S NORTHWEST CORNER;
 THENCE WITH MART'S WEST LINE, S. 6°-13'-20" W. 382.29 FEET TO MART'S SOUTHWEST CORNER AND IN THE NORTH LINE OF JAMES L. SHOOTS' PRESENT 60,400 ACRE TRACT, O.R. NO. 131 P. 158 (4-10-1991);
 THENCE WITH SHOOTS' NORTH LINE, N. 83°-27'-23" W. 163.65 FEET TO THE PLACE OF BEGINNING, CONTAINING A TOTAL OF 65,427 ACRES, MORE OR LESS.

OF THE ABOVE DESCRIBED TRACT, THERE BEING 50,830 ACRES IN V.M.S. NO. 3220, 13,877 ACRES IN V.M.S. NO. 4478 AND 0,720 ACRES IN V.M.S. NO. 5738.
 ALSO, THERE BEING 0,305 ACRES IN THE RIGHT OF WAY OF T.R. NO. 179 AND 1,774 ACRES IN THE RIGHT OF WAY OF U.S.R. NO. 33.



--- PROPOSED CORPORATION LINE.
 - - - - - EXISTING CORPORATION LINE.

JEFFERSON TOWNSHIP TRUSTEES
John W. Winland 3/19/93
 TRUSTEES DATE

Plat Preapproval *Jon C. Hines* 9-9-92
 DATE
 Plat Approval *Jon C. Hines* 4-14-93
 DATE

BELLEFONTAINE CITY OFFICES
James D. Neeky 3-26-93
 PLANNING COMMISSION PRESIDENT DATE
William R. Patterson 3/23/93
 PRESIDENT OF COUNCIL DATE
Andythe Predmore 3/23/93
 CLERK OF COUNCIL DATE
 92-105
 ORDINANCE NO. 1
Richard J. Vicario 3-23-93
 MAYOR DATE
Felix L. N... 3/25/93
 CITY ENGINEER DATE

LOGAN COUNTY OFFICES
Carmen K. Scott 3-19-93
 LUC REGIONAL PLANNING COMMISSION DATE
James G... 4-1-93
 LOGAN COUNTY ENGINEER DATE

LOGAN COUNTY COMMISSIONERS
 DATE
Donald C. Sawyer 10-29-92
George W. Clayton 10-29-92

TRANSFERRED:
 Transferred this 18th day of June, 1993.
Jan Jones
 Logan County Auditor

RECORDED:
 Recorded in Plat Cabinet A Slide 759A.
 Received for record at 2:41 O'Clock P.M.
 This 24th day of June, 1993.
Carolyn Collins
 Logdn County Recorder

This ANNEXATION MAP represents an area of land that has been researched and compiled by me from available recorded deeds, plats and other records on file in the Logan County Engineers Office, Logan County Recorders Office and City of Bellefontaine records.

I hereby certify this map is a correct representation of those records.
 Prepared August 27, 1992.

Daniel E. Gilbert
 Daniel E. Gilbert, P.S.
 Reg. Sur. No. 5402
 400 N. Park St.
 Bellefontaine, Ohio 43311
 Phone: (615) 593-1428

STATE OF OHIO
 DANIEL E. GILBERT
 SURVEYOR

092-048