

Alley 162

716

FRAME BARN

FRAME BAAN

FRAME BARN

CONCRETE BLOCK BLDG.

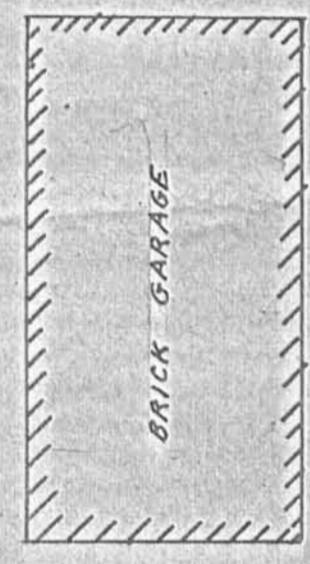
FRAME SHED

LOT 163

LOT 172



ALLEY 16 1/2' (N. OPERA ST.)

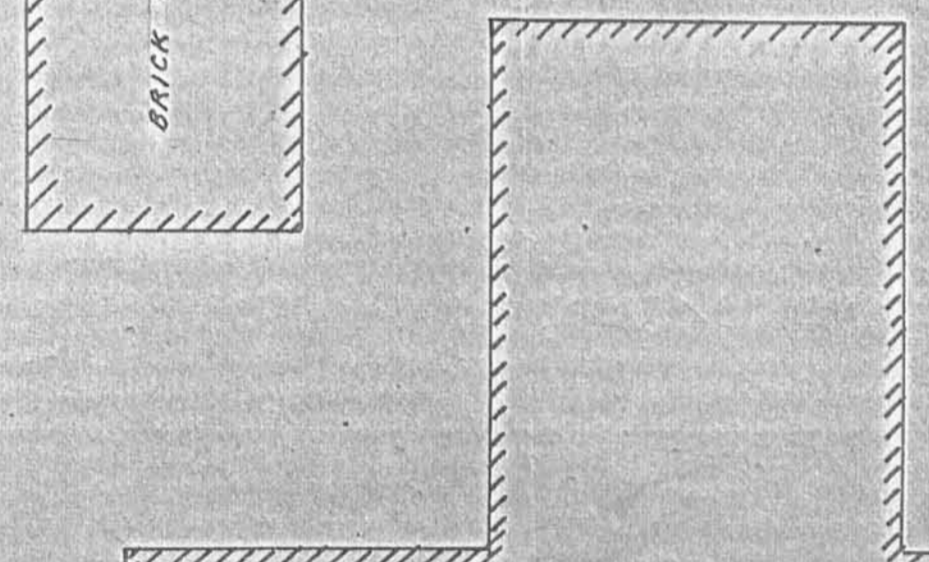


ARRECAST  
DEEP VOL. 123 PAGE 330

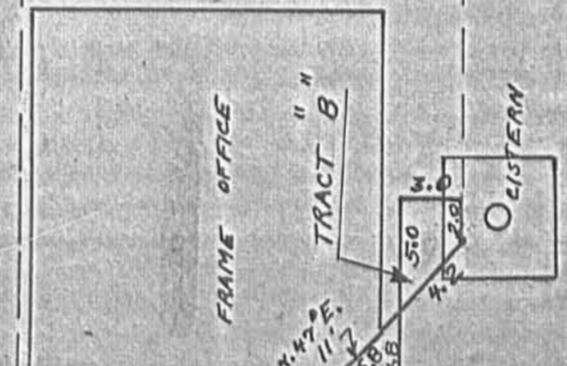
STANCHION  
DEEP VOL. 120 PAGE 325

HAMER  
DEEP VOL. 77 PAGE 636

SCALE ONE INCH TO TEN FEET  
SURVEY NOTES IN LOGAN COUNTY SURVEYOR'S  
FIELD BOOK # 419 PAGE 32.  
SURVEYED JULY 4, 1927  
J. F. Wright C.E.

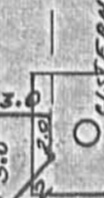


BRICK RES.



FRAME OFFICE

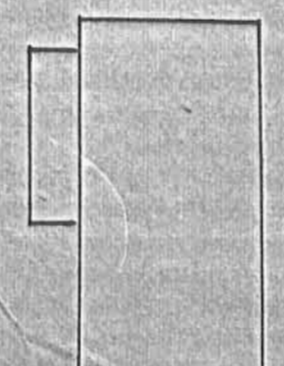
TRACT "B"



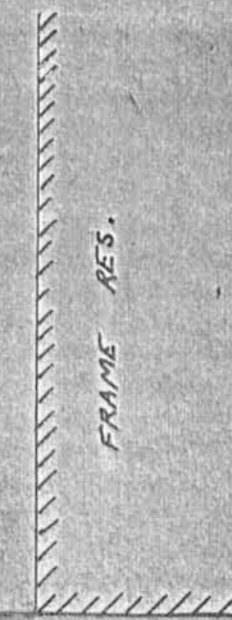
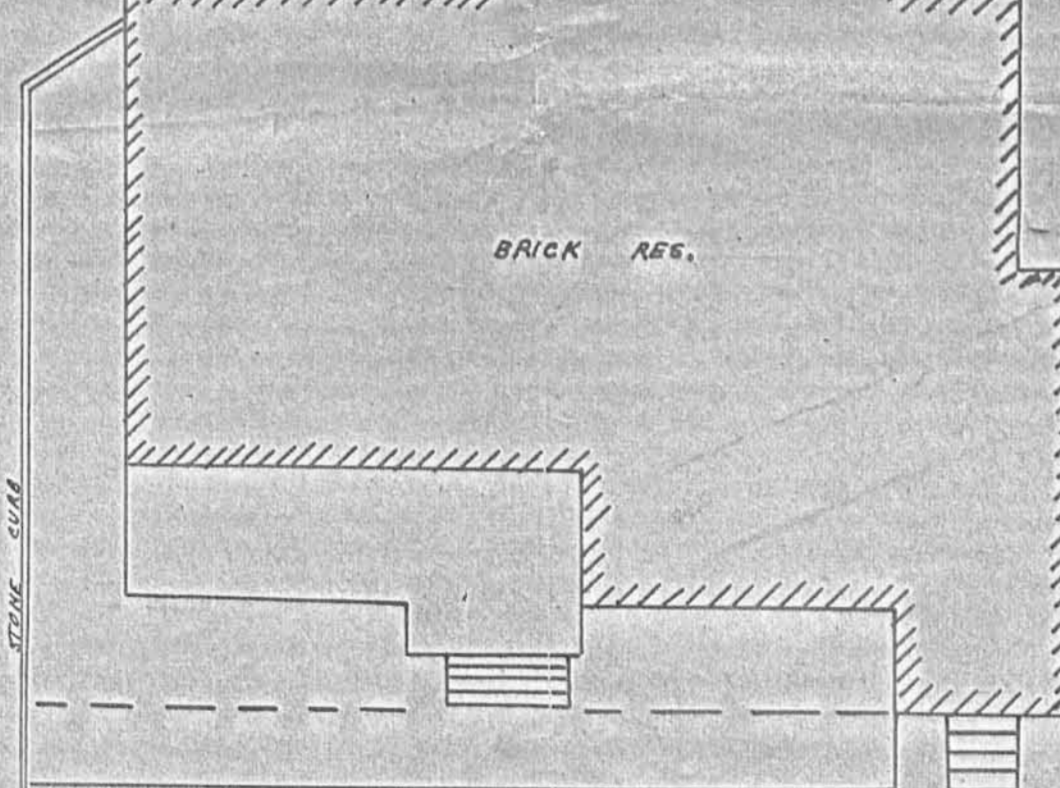
CISTERN

TRACT "A"

BRICK OFFICES



BRICK



FRAME RES.

INDEXED ON MAP  
DR. HAMER SURVEY  
BELLEFONTAINE

1927  
Columbus Ave.  
Lot 163-172

COLUMBUS AVE.