

CITY OFFICERS
 PLANNING COMMISSION PRESIDENT Louise Norris
 MAYOR Carl E. Hamilton
 PRESIDENT OF COUNCIL William R. Patterson
 ORDINANCE NO. 96-38
 CITY ENGINEER Fitzly L. Nozine
 TOWNSHIP TRUSTEES Ernie Dean
James Wish
Roy A. Fossil

COUNTY OFFICERS
 LOGAN COUNTY ENGINEER Samuel Cox
 LOGAN, UNION, CHAMPAIGN REGIONAL PLANNING COMMISSION
Carroll R. Scott
 LOGAN COUNTY COMMISSIONERS Jason A. Jeffrey
Samuel Foyt
George W. Clayton

TRANSFERRED THIS 25th DAY OF October, 1996.
Michael E. Godwin
 AUDITOR, LOGAN COUNTY, OHIO

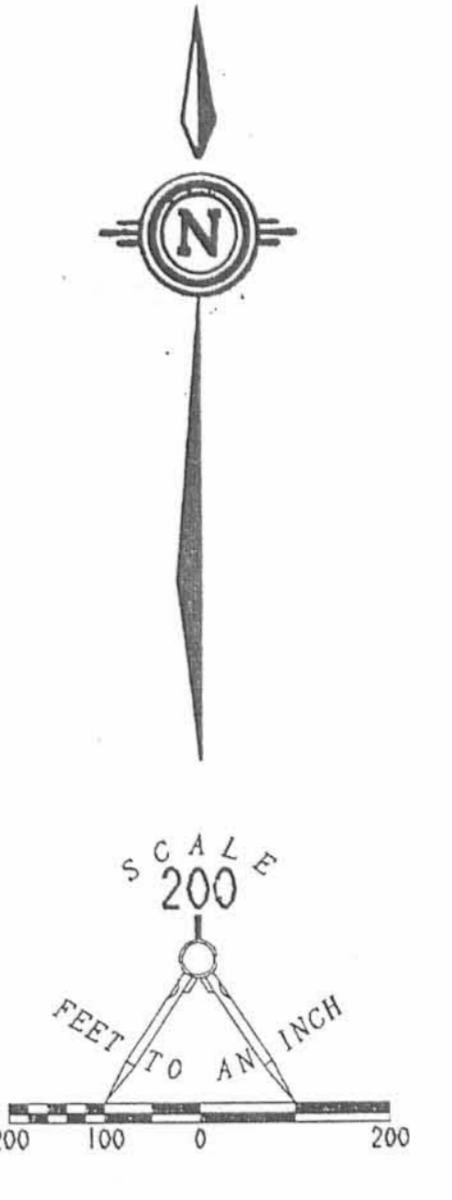
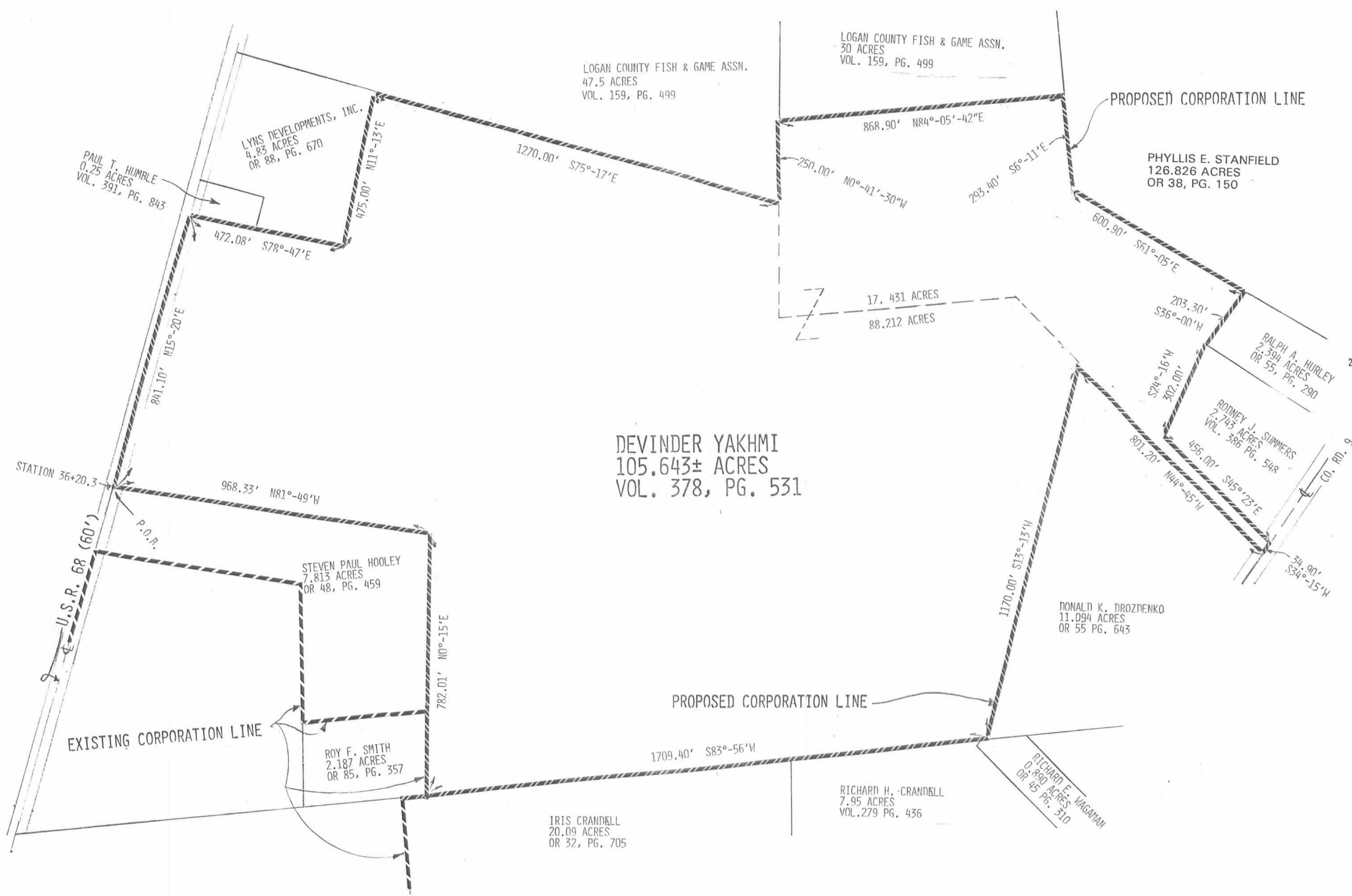
RECORDED IN PLAT CABINET B, SLIDE 17-A.
 RECEIVED FOR RECORD AT 3:32 O'CLOCK PM THIS 25th DAY
 OF October, 1996.
Carlynn Collins
 RECORDER, LOGAN COUNTY, OHIO

PLAT PREAPPROVAL Jon C. Hines 7-26-96
 PLAT APPROVAL Jon C. Hines 10-25-96

SURVEYOR'S STATEMENT
 I HEREBY STATE THAT THE ABOVE SHOWN PLAT OF 105.643 ACRE ANNEXATION WAS
 PREPARED BY ME FROM AVAILABLE RECORDS OF DEEDS AND OTHER RECORDS.



Jeffrey C. Lee
 PROFESSIONAL SURVEYOR 6559
 SEPTEMBER 26, 1991



**ANNEXATION TO THE CITY OF BELLEFONTAINE
 V.M.S. 3317, LAKE TOWNSHIP
 LOGAN COUNTY, OHIO**

DESCRIPTION

Lying in V.M.S. 3317, Lake Township, Logan County, Ohio.
 BEING ALL OF THAT 105.643 ACRE TRACT REMAINING FROM THE ORIGINAL 115.643 ACRES IN THE NAME OF DEVINDER YAKHMI AS DEEDED AND DESCRIBED IN VOLUME 378, PAGE 531 OF THE LOGAN COUNTY RECORDS OF DEEDS AND BEING MORE PARTICULARLY DESCRIBED AS FOLLOWS:
 BEGINNING AT A POINT IN THE CENTER-LINE OF U.S. ROUTE 68 (STATION 36+20.3 O.D.O.T. STATIONING) MARKING THE NORTHWEST CORNER OF THE STEVEN HOOLEY 7.813 ACRE TRACT (O.R. 48, PAGE 459) AND A SOUTH LINE OF THE SAID 105.643 ACRES.
 THENCE, WITH THE CENTER-LINE OF U.S. ROUTE 68, N 15°-20' E, A DISTANCE OF 841.1 FEET TO THE SOUTHWEST CORNER OF THE PAUL HUMBLE 0.25 ACRE TRACT (VOLUME 391, PAGE 841).
 THENCE, WITH THE SAID 0.25 ACRE TRACT AND THE LYNS DEVELOPMENTS, INC. 4.83 ACRE TRACT (O.R. 88, PAGE 670), S 78°-47' E, A DISTANCE OF 472.08 FEET TO THE SOUTHEAST CORNER OF SAID 4.83 ACRES.
 THENCE, N 11°-13' E, A DISTANCE OF 475.0 FEET TO THE NORTHEAST CORNER OF SAID 4.83 ACRE TRACT.
 THENCE, FOLLOWING LOGAN COUNTY FISH AND GAME 77.5 ACRE TRACT (VOLUME 159, PAGE 499) THE FOLLOWING THREE COURSES:
 S 75°-17' E, A DISTANCE OF 1270.0 FEET.
 N 0°-41'-30" E, A DISTANCE OF 250.0 FEET.
 N 84°-05'-42" E, A DISTANCE OF 868.9 FEET.
 THENCE, WITH THE PHYLLIS STANFIELD 126.826 ACRE TRACT (O.R. 38, PAGE 150) THE FOLLOWING TWO COURSES:
 S 6°-11' E, A DISTANCE OF 293.40 FEET.
 S 61°-05' E, A DISTANCE OF 600.9 FEET TO THE NORTHWEST CORNER OF THE RALPH HURLEY 2.394 ACRE TRACT (O.R. 55, PAGE 290).
 THENCE, WITH THE NORTHWESTERLY LINE OF THE SAID 2.394 ACRES, S 36°-00' W, A DISTANCE OF 203.3 FEET.
 THENCE, WITH THE RODNEY SUMMERS 2.745 ACRES (VOLUME 386, PAGE 548) THE FOLLOWING TWO COURSES:
 S 24°-16' W, A DISTANCE OF 302.0 FEET.
 S 45°-23' E, A DISTANCE OF 456.0 FEET TO A POINT IN THE CENTER-LINE OF COUNTY ROAD 9.
 THENCE, WITH THE CENTER-LINE OF COUNTY ROAD 9, S 34°-15' W, A DISTANCE OF 34.9 FEET TO A POINT ON THE NORTHEAST CORNER OF THE DONALD DROZDENKO 11.094 ACRE TRACT (O.R. 55, PAGE 643).
 THENCE, WITH THE SAID 11.094 ACRE TRACT THE FOLLOWING TWO COURSES:
 N 44°-45' W, A DISTANCE OF 801.2 FEET TO THE NORTH CORNER OF THE 11.094 ACRE TRACT.
 S 13°-13' W, A DISTANCE OF 1170.0 FEET TO A POINT ON THE NORTH LINE OF THE RICHARD WAGAMAN 0.890 ACRE TRACT (O.R. 45, PAGE 510).
 THENCE, WITH THE NORTH LINES OF THE SAID 0.890 ACRE TRACT, THE RICHARD CRANDELL 7.95 ACRES (VOL. 279, PAGE 436), AND THE IRIS CRANDELL 20.09 ACRES (O.R. 32, PAGE 705), S 83°-56' W, A DISTANCE OF 1709.4 FEET TO THE SOUTHEAST CORNER OF THE ROY F. SMITH 2.187 ACRE TRACT (O.R. 85, PAGE 357).
 THENCE, WITH THE EAST LINES OF THE SAID 2.187 ACRES AND THE STEVEN HOOLEY 7.831 ACRE TRACT (O.R. 48, PAGE 459), N 0°-15' E, A DISTANCE OF 782.01 FEET.
 THENCE, WITH THE NORTHERLY LINE OF THE SAID 7.831 ACRE TRACT, N 81°-49' W, A DISTANCE OF 968.33 FEET TO THE POINT OF BEGINNING.
 CONTAINING 105.643 +/- ACRES.
 THIS DESCRIPTION PREPARED FROM DEED RECORDS.
 BASIS FOR BEARINGS: CENTER-LINE OF U.S. ROUTE 68 = N 15°-20' E.

