

DESCRIPTION:

SITUATE IN STATE OF OHIO, LOGAN COUNTY, IN PLEASANT AND MIAMI TOWNSHIPS, AND LYING IN SECTION 7, TOWNSHIP 2 NORTH, RANGE 14 NORTH, BETWEEN THE MIAMI RIVERS SURVEY, AND BEING A 105.492 ACRE TRACT COMPRISED OF ALL OF THE BOARD OF EDUCATION OF THE RIVERSIDE LOCAL SCHOOL DISTRICT'S 61.004 ACRE TRACT (OFFICIAL RECORD VOLUME 438, PAGE 598), ALL OF THE RIVERSIDE LOCAL SCHOOL DISTRICT OF LOGAN COUNTY, OHIO'S 3.860 ACRE TRACT (DEED BOOK VOLUME 322, PAGE 549), PART OF THE RIVERSIDE BOARD OF EDUCATION'S 45.540 ACRE TRACT (OFFICIAL RECORD VOLUME 254, PAGE 574), PART OF THE BOARD OF EDUCATION OF DEGRAFF VILLAGE SCHOOL DISTRICT'S 7.29 ACRE TRACT (DEED BOOK VOLUME 124, PAGE 137), AND PART OF JAMES A. GROVE'S 4.10 ACRE TRACT (DEED BOOK VOLUME 405, PAGE 716), ALL RECORDS HEREIN AT THE RECORDER'S OFFICE, LOGAN COUNTY, OHIO, AND SAID 105.492 ACRE TRACT BEING BOUNDED AND MORE PARTICULARLY DESCRIBED AS FOLLOWS:

BEGINNING AT A 1/2" IRON PIN SET IN THE EXISTING VILLAGE OF DEGRAFF CORPORATION LINE AS ESTABLISHED BY ORDINANCE FOR ANNEXATION TO SAID VILLAGE FILED WITH THE LOGAN COUNTY AUDITOR ON SEPTEMBER 3, 1877, AND AS SHOWN AND DELINEATED ON DEGRAFF CORPORATION EXTENSION, A PLAT OF RECORD IN PLAT CABINET A, SLIDE 85, SAID POINT BEING IN THE LINE BETWEEN PLEASANT AND MIAMI TOWNSHIPS, AND SAID POINT MARKING A COMMON CORNER OF SAID 61.004 ACRE TRACT AND A 0.69 ACRE TRACT OWNED BY RUTH E. KINNAN, AS DESCRIBED IN OFFICIAL RECORD VOLUME 338, PAGE 984, SAID POINT ALSO BEING THE NORTH LINE OF A 4.10 ACRE TRACT OWNED BY JAMES A. GROVE, AS DESCRIBED IN DEED BOOK VOLUME 405, PAGE 716;

THENCE NORTH 84° 30' 54" WEST, A DISTANCE OF 274.42 FEET, ALONG THE LINE BETWEEN PLEASANT AND MIAMI TOWNSHIPS, SAID LINE ALSO BEING THE NORTH LINE OF JAMES A. GROVE'S 4.10 ACRE TRACT, AND SAID LINE ALSO BEING THE EXISTING VILLAGE OF DEGRAFF CORPORATION LINE, TO AN ANGLE POINT IN SAID CORPORATION LINE;

THENCE SOUTH 05° 29' 06" WEST, A DISTANCE OF 1077.76 FEET, ALONG SAID EXISTING VILLAGE OF DEGRAFF CORPORATION LINE, OVER AND ACROSS SAID 4.10, 45.54 AND 7.29 ACRE TRACTS, TO AN ANGLE POINT IN SAID EXISTING CORPORATION LINE IN THE NORTH RIGHT-OF-WAY LINE OF MOORE STREET IN SAID VILLAGE OF DEGRAFF;

THENCE NORTH 84° 30' 43" WEST, A DISTANCE OF 1749.17 FEET, ALONG SAID EXISTING VILLAGE OF DEGRAFF CORPORATION LINE, SAID LINE BEING THE NORTH LINE, AND THE NORTH LINE EXTENDED, OF SAID MOORE STREET, TO AN ANGLE POINT IN SAID EXISTING VILLAGE OF DEGRAFF CORPORATION LINE AT THE EAST BANK LOW WATER MARK OF THE GREAT MIAMI RIVER;

THENCE THE FOLLOWING FIFTY (50) COURSES AND DISTANCES ALONG THE MEANDERINGS OF THE EAST-BANK LOW WATER MARK OF SAID GREAT MIAMI RIVER:

- 1. NORTH 12° 55' 33" WEST, A DISTANCE OF 35.48 FEET, TO A POINT;
2. NORTH 01° 55' 30" WEST, A DISTANCE OF 54.39 FEET, TO A POINT;
3. NORTH 04° 21' 54" WEST, A DISTANCE OF 50.42 FEET, TO A POINT;
4. NORTH 05° 41' 07" EAST, A DISTANCE OF 75.88 FEET, TO A POINT;
5. NORTH 07° 00' 59" EAST, A DISTANCE OF 54.34 FEET, TO A POINT;
6. NORTH 04° 57' 11" EAST, A DISTANCE OF 51.82 FEET, TO A POINT;
7. NORTH 06° 31' 47" EAST, A DISTANCE OF 44.89 FEET, TO A POINT;
8. NORTH 03° 59' 48" EAST, A DISTANCE OF 65.75 FEET, TO A POINT;
9. NORTH 09° 16' 57" EAST, A DISTANCE OF 51.15 FEET, TO A POINT;
10. NORTH 03° 56' 53" EAST, A DISTANCE OF 36.92 FEET, TO A POINT;
11. NORTH 05° 14' 59" EAST, A DISTANCE OF 54.50 FEET, TO A POINT;
12. NORTH 06° 02' 59" EAST, A DISTANCE OF 48.81 FEET, TO A POINT;
13. NORTH 00° 24' 28" WEST, A DISTANCE OF 61.09 FEET, TO A POINT;
14. NORTH 04° 14' 14" EAST, A DISTANCE OF 54.93 FEET, TO A POINT;
15. NORTH 02° 05' 43" WEST, A DISTANCE OF 52.18 FEET, TO A POINT;
16. NORTH 04° 06' 50" WEST, A DISTANCE OF 51.70 FEET, TO A POINT;
17. NORTH 02° 03' 47" WEST, A DISTANCE OF 59.31 FEET, TO A POINT;
18. NORTH 04° 02' 56" EAST, A DISTANCE OF 40.66 FEET, TO A POINT;
19. NORTH 01° 40' 29" WEST, A DISTANCE OF 29.71 FEET, TO A POINT;
20. NORTH 02° 03' 47" WEST, A DISTANCE OF 59.31 FEET, TO A POINT;
21. NORTH 00° 52' 43" WEST, A DISTANCE OF 52.18 FEET, TO A POINT;
22. NORTH 01° 28' 27" WEST, A DISTANCE OF 72.43 FEET, TO A POINT;
23. NORTH 00° 07' 57" EAST, A DISTANCE OF 50.47 FEET, TO A POINT;
24. NORTH 02° 15' 41" WEST, A DISTANCE OF 58.87 FEET, TO A POINT;
25. NORTH 02° 44' 45" EAST, A DISTANCE OF 58.09 FEET, TO A POINT;
26. NORTH 03° 46' 30" EAST, A DISTANCE OF 47.17 FEET, TO A POINT;
27. NORTH 04° 37' 02" EAST, A DISTANCE OF 63.45 FEET, TO A POINT;
28. NORTH 07° 12' 03" EAST, A DISTANCE OF 59.79 FEET, TO A POINT;
29. NORTH 04° 37' 02" EAST, A DISTANCE OF 63.45 FEET, TO A POINT;
30. NORTH 05° 54' 51" EAST, A DISTANCE OF 42.56 FEET, TO A POINT;
31. NORTH 02° 05' 43" WEST, A DISTANCE OF 52.18 FEET, TO A POINT;
32. NORTH 01° 28' 27" WEST, A DISTANCE OF 72.43 FEET, TO A POINT;
33. NORTH 00° 07' 57" EAST, A DISTANCE OF 50.47 FEET, TO A POINT;
34. NORTH 02° 15' 41" WEST, A DISTANCE OF 58.87 FEET, TO A POINT;
35. NORTH 02° 44' 45" EAST, A DISTANCE OF 58.09 FEET, TO A POINT;
36. NORTH 03° 46' 30" EAST, A DISTANCE OF 47.17 FEET, TO A POINT;
37. NORTH 04° 37' 02" EAST, A DISTANCE OF 63.45 FEET, TO A POINT;
38. NORTH 07° 12' 03" EAST, A DISTANCE OF 59.79 FEET, TO A POINT;
39. NORTH 04° 37' 02" EAST, A DISTANCE OF 63.45 FEET, TO A POINT;
40. NORTH 05° 54' 51" EAST, A DISTANCE OF 42.56 FEET, TO A POINT;
41. NORTH 02° 05' 43" WEST, A DISTANCE OF 52.18 FEET, TO A POINT;
42. NORTH 01° 28' 27" WEST, A DISTANCE OF 72.43 FEET, TO A POINT;
43. NORTH 00° 07' 57" EAST, A DISTANCE OF 50.47 FEET, TO A POINT;
44. NORTH 02° 15' 41" WEST, A DISTANCE OF 58.87 FEET, TO A POINT;
45. NORTH 02° 44' 45" EAST, A DISTANCE OF 58.09 FEET, TO A POINT;
46. NORTH 03° 46' 30" EAST, A DISTANCE OF 47.17 FEET, TO A POINT;
47. NORTH 04° 37' 02" EAST, A DISTANCE OF 63.45 FEET, TO A POINT;
48. NORTH 07° 12' 03" EAST, A DISTANCE OF 59.79 FEET, TO A POINT;
49. NORTH 04° 37' 02" EAST, A DISTANCE OF 63.45 FEET, TO A POINT;
50. NORTH 23° 57' 42" WEST, A DISTANCE OF 61.77 FEET, TO A POINT AT THE COMMON CORNER OF SAID 61.004 ACRE TRACT AND THE 42.83 ACRE TRACT OWNED BY FLOYD F. FURROWS, JR., TRUSTEE, AS DESCRIBED IN OFFICIAL RECORD VOLUME 310, PAGE 515, TRACT IV;

THENCE SOUTH 85° 40' 55" EAST, A DISTANCE OF 1610.19 FEET, ALONG THE LINE COMMON TO SAID 61.004 AND 42.83 ACRE TRACTS, TO A 1/2" IRON PIN FOUND MARKING THE COMMON CORNER OF SAID 61.004 AND 42.83 ACRE TRACTS AT AN ANGLE POINT IN THE CENTERLINE OF COUNTY ROAD 24 (LOGANSVILLE-DEGRAFF PIKE);

THENCE SOUTH 24° 47' 21" EAST, A DISTANCE OF 194.61 FEET, ALONG THE CENTERLINE OF SAID COUNTY ROAD 24 (LOGANSVILLE-DEGRAFF PIKE), SAID LINE ALSO BEING THE EASTERLY LINE OF SAID 61.004, TO A RAILROAD SPIKE FOUND MARKING A COMMON CORNER OF SAID 61.004 ACRE TRACT AND A 1.996 ACRE TRACT OWNED BY DAVID A. WILLIAMS AND TAMMY L. WILLIAMS, AS DESCRIBED IN OFFICIAL RECORD VOLUME 110, PAGE 445;

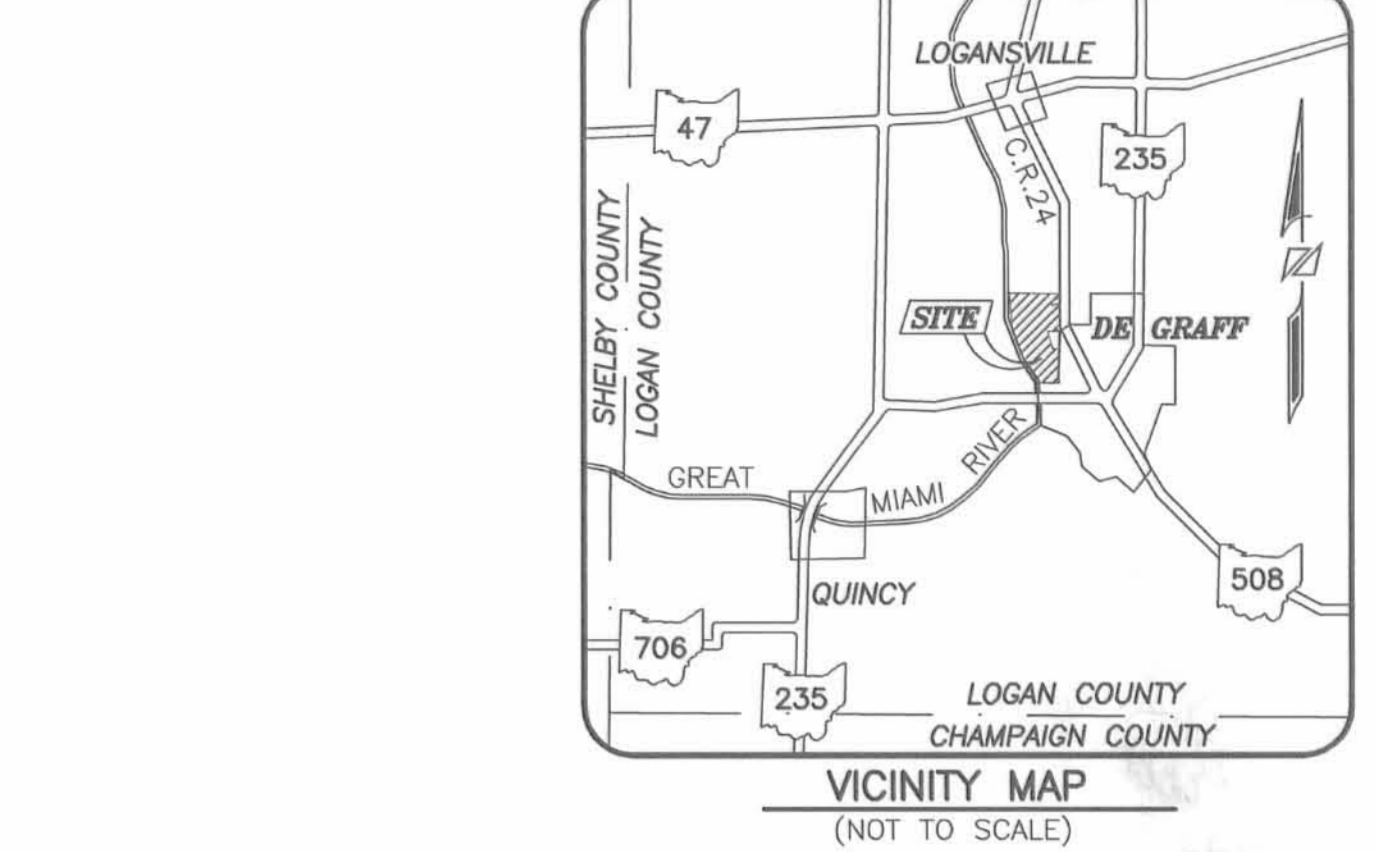
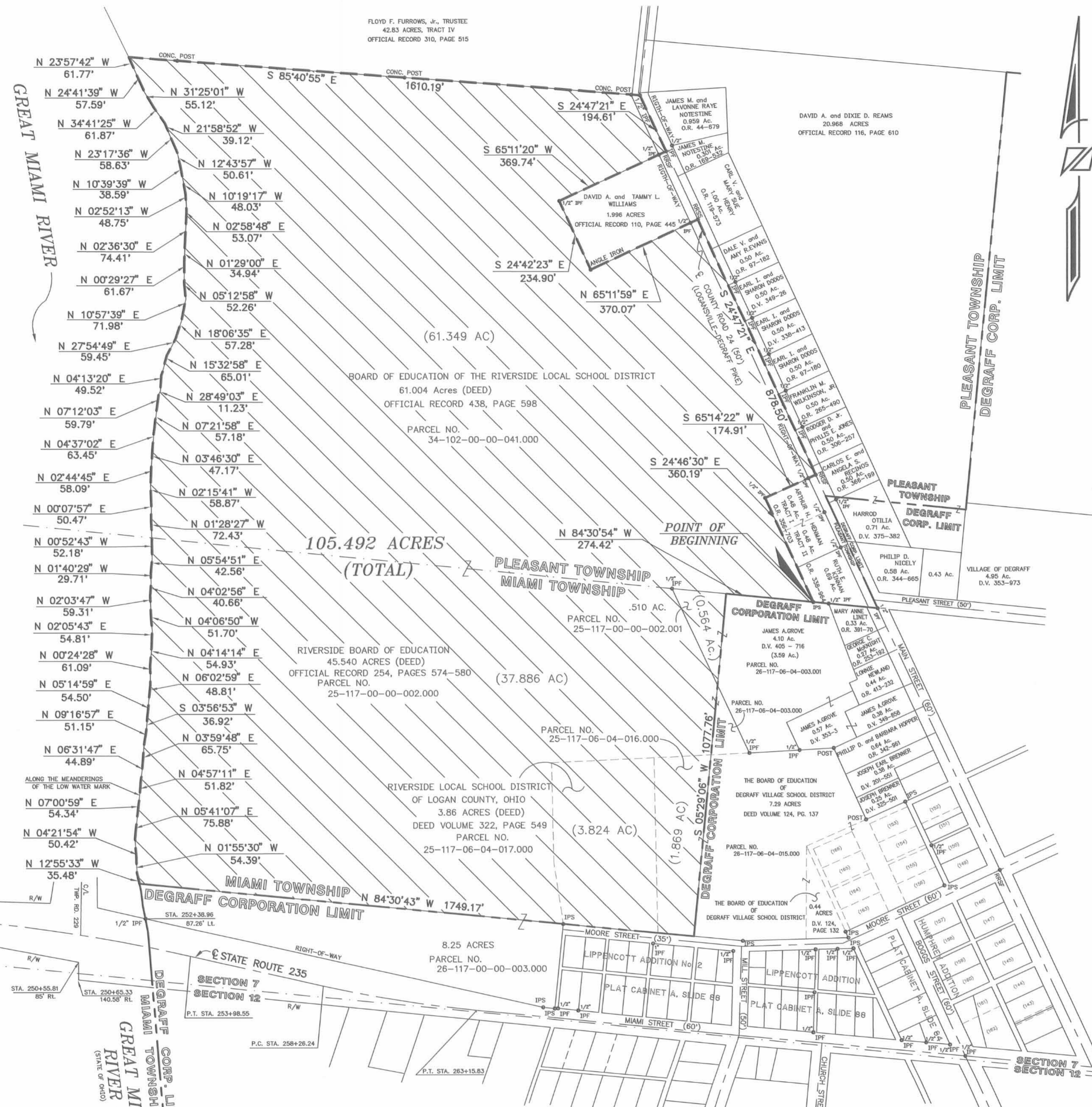
THENCE THE FOLLOWING THREE (3) COURSES AND DISTANCES ALONG THE LINES COMMON TO SAID 61.004 AND 1.996 ACRE TRACTS:

- 1. SOUTH 65° 11' 20" WEST, A DISTANCE OF 369.74 FEET, TO A 1/2" IRON PIN FOUND;
2. SOUTH 24° 42' 23" EAST, A DISTANCE OF 234.90 FEET, TO AN ANGLE IRON FOUND;
3. NORTH 65° 11' 59" EAST, A DISTANCE OF 370.07 FEET, TO A RAILROAD SPIKE SET IN THE CENTERLINE OF SAID COUNTY ROAD 24 (LOGANSVILLE-DEGRAFF PIKE);

THENCE SOUTH 24° 47' 21" EAST, A DISTANCE OF 878.50 FEET, ALONG THE CENTERLINE OF SAID COUNTY ROAD 24 (LOGANSVILLE-DEGRAFF PIKE), SAID LINE ALSO BEING AN EASTERLY LINE OF SAID 61.004 ACRE TRACT, TO A RAILROAD SPIKE FOUND MARKING THE COMMON CORNER OF SAID 61.004 ACRE TRACT AND A 0.48 ACRE TRACT OWNED BY ARTHUR H. HENMAN, AS DESCRIBED IN OFFICIAL RECORD VOLUME 356, PAGE 703, TRACT I;

THENCE SOUTH 65° 14' 22" WEST, A DISTANCE OF 174.91 FEET, ALONG THE LINE COMMON TO SAID 61.004 AND 0.48 ACRE TRACTS, TO A 1/2" IRON PIN FOUND;

THENCE SOUTH 24° 46' 30" EAST, A DISTANCE OF 360.19 FEET, ALONG THE LINE COMMON TO SAID 61.004 AND 0.48 ACRE TRACTS, AND THEN COMMON TO A 0.48 ACRE TRACT OWNED BY ARTHUR H. HENMAN, AS DESCRIBED IN OFFICIAL RECORD VOLUME 356, PAGE 703, TRACT I, AND THEN COMMON TO SAID 0.69 ACRE TRACT OWNED BY RUTH E. KINNAN, TO THE POINT OF BEGINNING, CONTAINING 105.492 ACRES, MORE OR LESS.

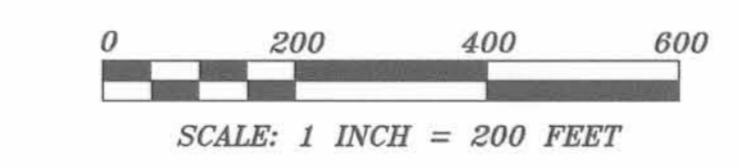


LOGAN COUNTY COMMISSIONER: [Signature] DATE: 7-24-01
LOGAN COUNTY COMMISSIONER: [Signature] DATE: 7-26-01
LOGAN COUNTY COMMISSIONER: [Signature] DATE: 7/24/01
LOGAN COUNTY ENGINEER: [Signature] DATE: 8/23/01
CHAIRMAN, TOWNSHIP TRUSTEES: [Signature] DATE:
L. U. C. PLANNING DIRECTOR: [Signature] DATE: 10/25/01
MAYOR, VILLAGE OF DEGRAFF: [Signature] DATE: 10-10-01
PRESIDENT, CITY COUNCIL: [Signature] DATE: 10-15-01
CLERK, CITY COUNCIL: [Signature] DATE: 10-16-01
PLAT PRE-APPROVED: [Signature] DATE: 2-13-01
PLAT CHECKED: [Signature] DATE: 11-8-01
CITY ORDINANCE NUMBER: 01-13 DATE: 10-16-01
TRANSFERRED THIS 8th DAY OF NOVEMBER, 2001.
AUDITOR, LOGAN COUNTY, OHIO: [Signature]
RECEIVED FOR RECORD AT 2:55 O'CLOCK P.M.
THIS 8th DAY OF November, 2001.
RECORDER, LOGAN COUNTY, OHIO: [Signature]
RECORDED IN PLAT CABINET B, SLIDE 70A
INSTRUMENT NUMBER 2001021525

LEGEND
EXISTING VILLAGE OF DEGRAFF CORPORATION LINE
PROPOSED VILLAGE OF DEGRAFF CORPORATION LINE
AREA TO BE ANNEXED
IPF IRON PIN FOUND
IPS IRON PIN SET
RRSF RAILROAD SPIKE FOUND
RRSS RAILROAD SPIKE SET

SURVEY EXHIBIT FOR ANNEXATION OF 105.492 ACRES LYING IN SECTION 7, TOWNSHIP 2 NORTH, RANGE 14 NORTH BETWEEN THE MIAMI RIVERS SURVEY PLEASANT TOWNSHIP AND MIAMI TOWNSHIP LOGAN COUNTY, OHIO TO THE VILLAGE OF DEGRAFF

PREPARED BY: R.D. Zande & Associates 1237 DUBLIN ROAD COLUMBUS, OHIO 43215 NOVEMBER 2000 REVISED JANUARY 2001



BASIS OF BEARINGS:

THE BEARINGS SHOWN HEREON ARE BASED ON THE GRID BEARING OF NORTH 24° 47' 21" WEST FOR THE CENTERLINE OF LOGANSVILLE-DEGRAFF PIKE, COUNTY ROAD 24, BETWEEN ITS INTERSECTION WITH THE SOUTH LINE OF PLEASANT TOWNSHIP AS SHOWN ON PAGE 63 OF THE LOGAN COUNTY ENGINEER FIELD BOOK NO. 516 AND MARKED BY A 1/2" IRON PIN FOUND AT STATION 0+00, TO ANGLE POINT IN SAID CENTERLINE MARKED BY A 1/2" IRON PIN FOUND AT STATION 17+71, AS DETERMINED BY A GLOBAL POSITIONING SYSTEM (GPS) NETWORK OF FIELD OBSERVATIONS PERFORMED IN FEBRUARY 2000 WHICH INCORPORATED THE NATIONAL GEODETIC SURVEY (NGS) MONUMENTS AT THE UNION COUNTY AIRPORT (MARYPORT-K221670), AT THE BELLEFONTAINE MUNICIPAL AIRPORT (BELLPORT-K22131), AT THE LOGAN COUNTY OHIO DEPARTMENT OF NATURAL RESOURCES (ODNR) PARK (LOGDNR-AB6103), AT THE SHELBY COUNTY OHIO DEPARTMENT OF TRANSPORTATION (ODOT) DISTRICT 7 OFFICE (F 348-LA2506), ON THE MIAMI-CHAMPAIGN COUNTY LINE AT BROWN TOWNSHIP ON U.S. HIGHWAY 36 (MIA 079-LA2577), AT GRIMES FIELD AIRPORT IN URBANA (URBPORT-K22187), AND IN MECHANICSBURG, CHAMPAIGN COUNTY, AT THE INTERSECTION OF STATE HIGHWAYS 29 AND 559 (CHP OUT-AB8061).

GENERAL NOTES:

- 1. THIS SURVEY DOES NOT REPRESENT ANY EASEMENTS THAT MAY AFFECT THE SUBJECT PARCEL.
2. THIS SURVEY DOES NOT REPRESENT ANY UNDERGROUND UTILITIES THAT MAY AFFECT THE SUBJECT PARCEL.
3. ALL IRON PINS SET ARE 3/4" IRON PIPES, 30 INCHES IN LENGTH, WITH A YELLOW CAP BEARING THE NAME "R. D. ZANDE".

CERTIFICATION:

I HEREBY CERTIFY THAT THIS SURVEY SHOWN ON THE ATTACHED PLAT WAS PREPARED FROM AN ON THE GROUND SURVEY IN FEBRUARY 2000 MADE UNDER MY SUPERVISION AND THAT IT AND THE INFORMATION, COURSES AND DISTANCES AS SHOWN ARE CORRECT TO THE BEST OF MY KNOWLEDGE.

R. D. ZANDE & ASSOCIATES, INC.
Chris Y. Scheeres, P.S.
REGISTERED SURVEYOR NO. 7385
29 January 2001

