

VILLAGE OF RUSSELLS POINT  
ANNEXATION MAP OF 5.105 ACRES  
SECTION 36, TOWN 6, RANGE 8  
WASHINGTON TOWNSHIP  
LOGAN COUNTY, OHIO

DESCRIPTION

The following described 5.105 acre tract of land is situated in Section 36, Town 6, Range 8, Washington Township, Logan County, Ohio and being part of the Ohio Department of Natural Resources lands known as Indian Lake, all of Charles William and Judith Ann Hines' Parcel I, Tract I, 0.57 acre, also known as Lot 46-156 of the Indian Lake Reservoir Lands (Plat Cabinet A, Slide 439), all of Parcel I, Tract II, 0.24 acre, part of Parcel II, Tract I, 0.66 acre, also known as part of Lot 46-154 of the Indian Lake Reservoir Lands (Plat Cabinet A, Slide 439), all of Parcel II, Tract II, 0.0823 acre, also known as Lot 46-229 of the Indian Lake Reservoir Lands No. 2 (Plat Cabinet A, Slide 459), all of Parcel III, Tract I, 0.77 acre, also known as Lot 46-155 of the Indian Lake Reservoir Lands (Plat Cabinet A, Slide 439), and all of Parcel III, Tract II, 0.16 acre, as all are described in Official Record 385, page 152, said 5.105 acre tract more particularly described as follows:

Beginning at a point at the intersection of the west line of State Route 708 (variable right-of-way width) with the south line of Township Road 285 (30 feet wide), said point also marking the northeast corner of said 0.16 acre tract;

Thence South 29°12'00" West 366.97 feet, departing from the south line of Township Road 285, following the west line of State Route 708 and the east line of said 0.16 acre tract, passing the southeast corner of said 0.16 acre tract at 4.00 feet and the northeast corner of said 0.66 acre tract (part of Lot 46-154) at 284.10 feet, following the east line of said 0.66 acre tract (part of Lot 46-154) thereafter, to a point;

Thence North 60°48'00" West 17.50 feet, continuing along the west line of State Route 708 and the east line of said 0.66 acre tract (part of Lot 46-154), to a point;

Thence South 29°12'00" West 69.96 feet, continuing along the west line of State Route 708, following the east line of said 0.66 acre tract (part of Lot 46-154) and the east line of said 0.0823 acre tract (Lot 46-229), to a point;

Thence South 33°29'21" West 200.56 feet, continuing along the west line of State Route 708 and the east line of said 0.0823 acre tract (Lot 46-229), passing the southeast corner of said 0.0823 acre tract (Lot 46-229) at 96.38 feet, to a point;

Thence South 28°00'23" West 61.62 feet, continuing along the west line of State Route 708, to a point in the north Corporation Line of the Village of Russells Point;

Thence North 57°53'49" West 305.00 feet, departing from the west line of State Route 708, entering said Indian Lake, and following the north Corporation Line of the Village of Russells Point, to a point;

Thence North 26°23'38" East 466.37 feet, departing from the north Corporation Line of the Village of Russells Point, to a point in the south line of Township Road 285;

Thence North 56°56'00" East 173.28 feet, following the south line of Township Road 285, passing the northwest corner of said 0.16 acre tract at 116.87 feet, following the north line of said 0.16 acre tract thereafter, to a point;

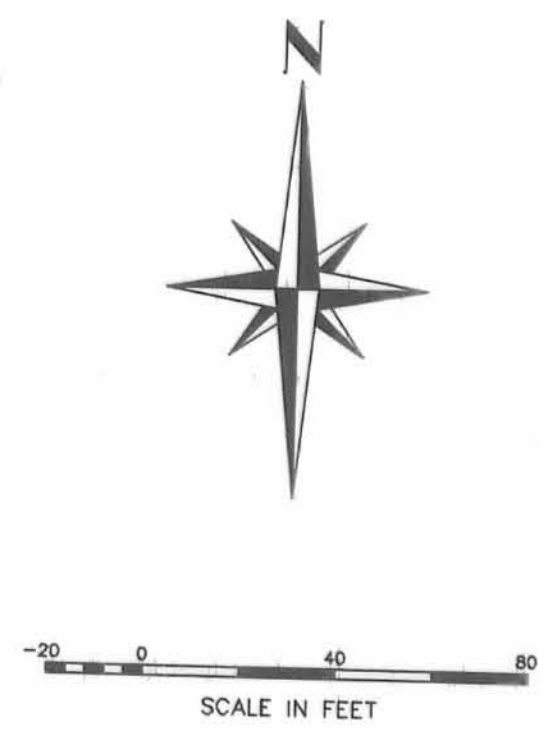
Thence North 78°09'00" East 93.66 feet, continuing along the south line of Township Road 285 and the north line of said 0.16 acre tract, to a point;

Thence South 75°24'00" East 59.25 feet, continuing along the south line of Township Road 285 and the north line of said 0.16 acre tract, to a point;

Thence South 55°11'00" East 152.97 feet, continuing along the south line of Township Road 285 and the north line of said 0.16 acre tract, to the place of beginning, containing 5.105 acres, more or less, and subject to all valid easements and restrictions of record.

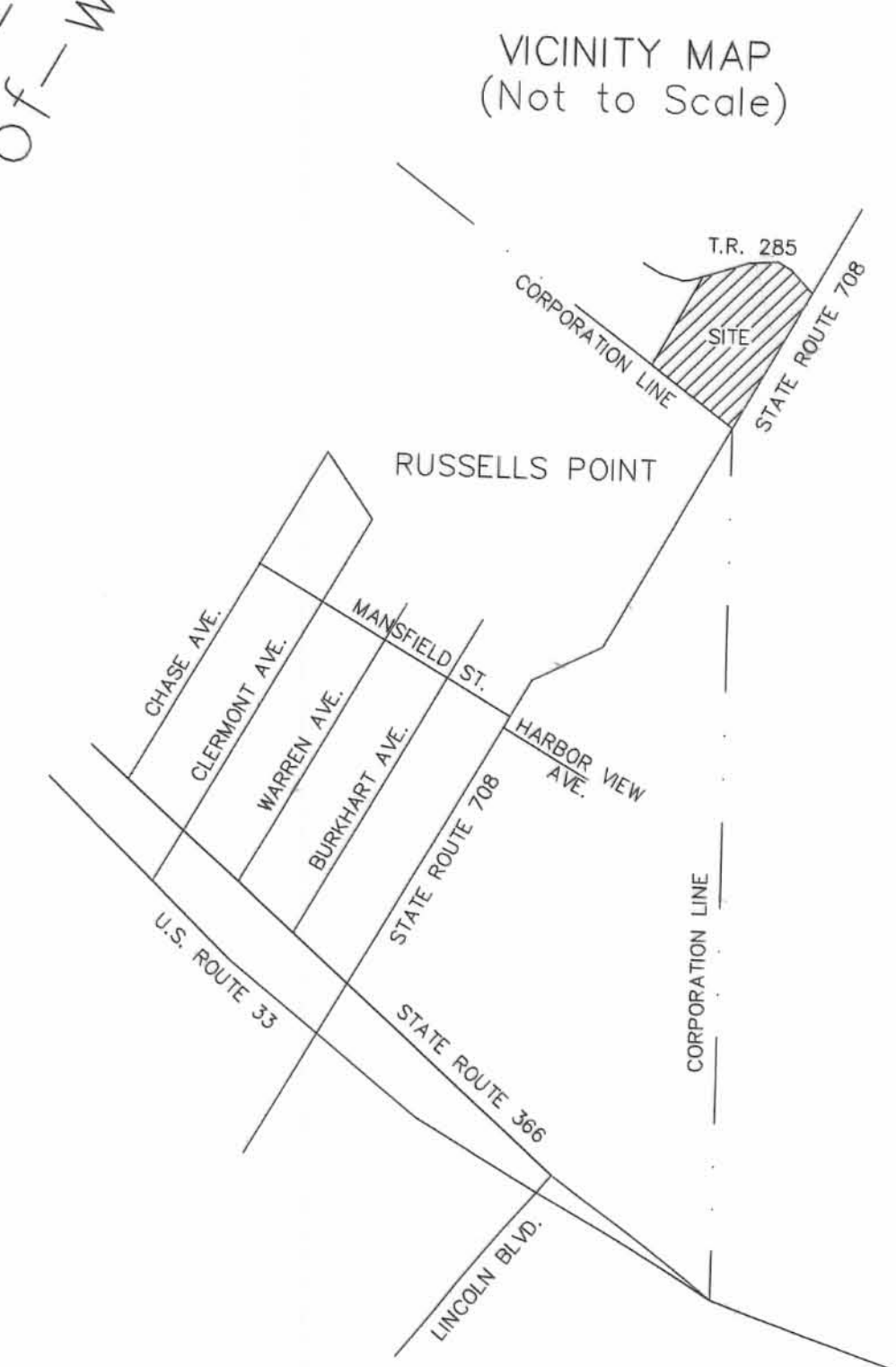
Bearings indicated herein are based on the centerline of State Route 708 being South 29°12'00" West and all other bearings are based on angles and distances from deed record.

Description prepared by George A. Blackburn, R.S. 7873



5.105 Acres

STATE ROUTE 708  
(variable right-of-way width)



SURVEYOR'S AFFIDAVIT

THE ABOVE ANNEXATION MAP HAS BEEN PREPARED FROM RECORDS BY BLACKBURN SURVEYING. THIS IS NOT A BOUNDARY SURVEY AS DEFINED IN CHAPTER 4733-37 OF THE OHIO ADMINISTRATIVE CODE.

BEARINGS INDICATED HEREON ARE BASED ON THE CENTERLINE OF STATE ROUTE 708 BEING SOUTH 29°12'00" WEST AND ALL OTHER BEARINGS ARE BASED ON ANGLES AND DISTANCES FROM DEED RECORD.

*George A. Blackburn*  
George A. Blackburn, R.S. 7873  
October 23, 2001



LOGAN COUNTY COMMISSIONERS	<i>John Bayne</i>	12-17-02
	<i>John Reson</i>	12-17-02
	<i>Donald Smith</i>	12-17-02
	<i>Scott Clark</i>	12-17-02
LOGAN COUNTY ENGINEER		
CHAIRMAN, TOWNSHIP TRUSTEES		
L.U.C. PLANNING DIRECTOR	<i>Samuel Cox</i>	12-17-02
MAYOR OF RUSSELLS POINT	<i>John J. Hauden</i>	12-16-02
PRESIDENT, VILLAGE COUNCIL	<i>Greg Dean</i>	12-16-02
CLERK, VILLAGE COUNCIL	<i>Mary S. Leonard</i>	12-16-02
PLAT PRE-APPROVED	<i>Jon C. Hines</i>	2-15-02
PLAT CHECKED	<i>Jon C. Hines</i>	12-17-02
VILLAGE ORDINANCE NUMBER	02-935	
TRANSFERRED THIS	31 <sup>st</sup> DAY OF	DECEMBER 20 02
AUDITOR, LOGAN COUNTY, OHIO	<i>Michael E. Godwin</i>	
RECEIVED FOR RECORD AT	3:45 O'CLOCK	P. M.
THIS	31 <sup>st</sup> DAY OF	December 20 02
RECORDER, LOGAN COUNTY, OHIO	<i>Linda Hanson</i>	
RECORDED IN PLAT CABINET	B	SLIDE 81B

**BLACKBURN SURVEYING**  
12125 GREEN STREET  
MIDDLEBURG, OHIO 43336  
(937) 666-5605

Filename: Hines Annex 10-01  
Scale: 1" = 40'  
Date: 10/23/01