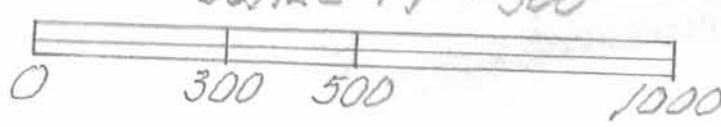


ORIGINAL 76.44 AC. TRACT 2

226.257 AC.

ROBERT C. ROACH ETAL  
OR. VOL. 246 PG. 482  
ORIGINAL 168.9 AC.  
TRACT I

SURVEY OF 226.257 AC. TRACT 'N'  
FRACTIONAL SECTION 13, TOWN 2, RANGE 15 B.M.R.S.,  
HARRISON TOWNSHIP, LOGAN COUNTY, OHIO  
FOR JEAN ROACH  
APRIL 5, 2006  
SCALE: 1" = 300'



- LEGEND:
- A = MAGNETIC NAIL SET
  - B = 1 INCH IRON PIPE FD.
  - C = R.R. SPIKE FD.
  - D = 5/8" IRON BAR SET
  - E = 5/8" IRON BAR FD.
  - F = 6" WOOD CORNER POST FD.



Leslie H. Geeslin  
LESLIE H. GEESLIN  
RUSHSVLVANIA, OHIO  
PH 937-468-7265

INDEXED ON MAP  
5089