

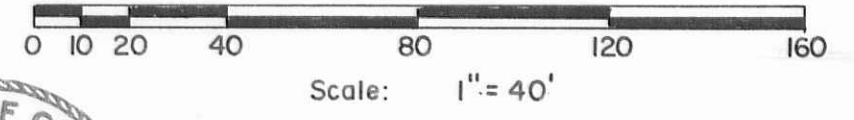
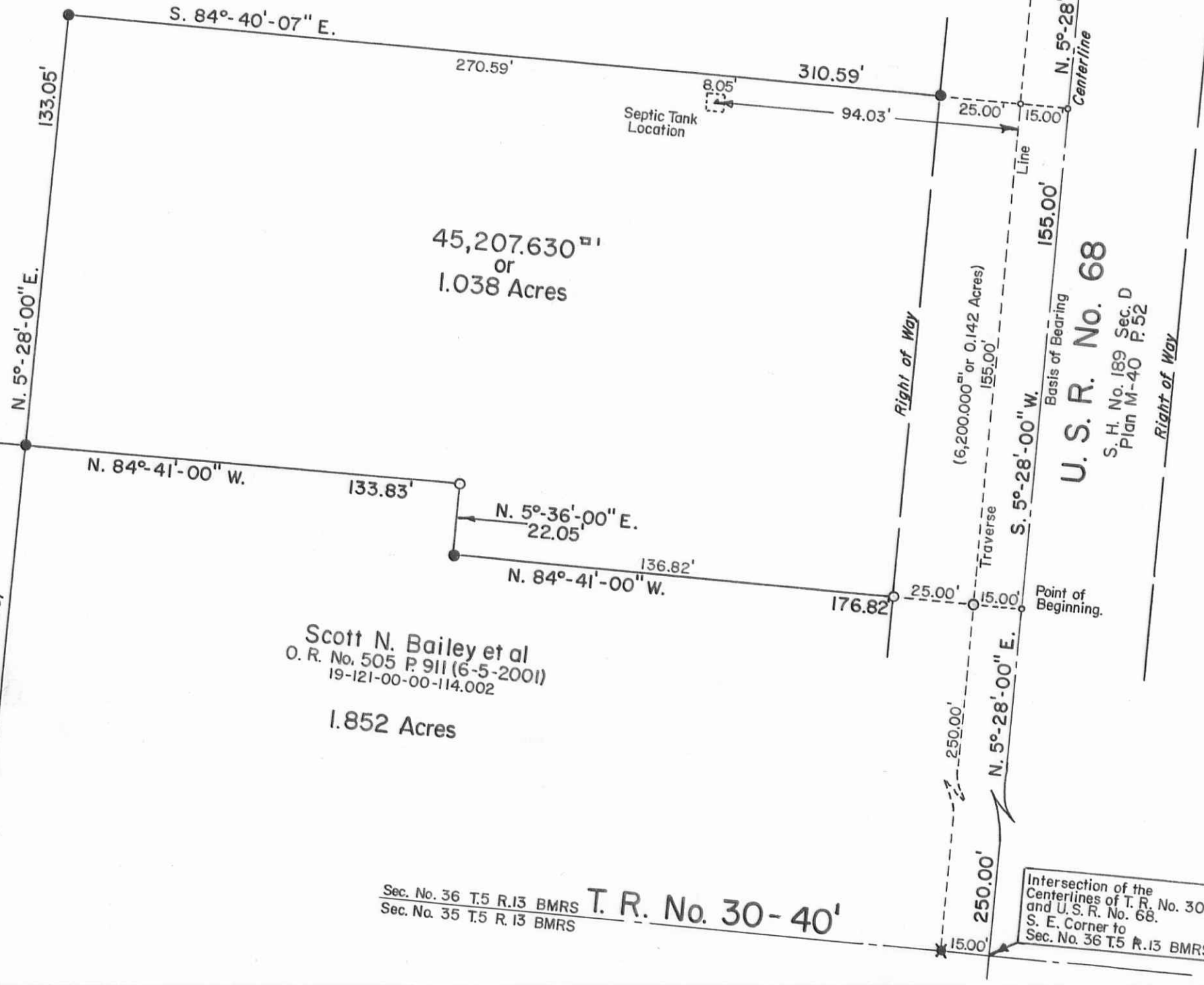
John A. Marshall et ux
 O. R. No. 688 P. 416 (6-10-2003)
 19-121-00-00-113.000
 7.450 Acres
 - 1.038 Acres Surveyed
 6.412 Acres Remaining

RHA GROUP REALTY, INC.
 O. R. No. 68 P. 398 (8-10-1988)
 19-121-00-00-114.000
 Remainder of 3.294 Acres
 (1.442 Acres)

Scott N. Bailey et al
 O. R. No. 505 P. 911 (6-5-2001)
 19-121-00-00-114.002
 1.852 Acres

Sec. No. 36 T.5 R.13 BMRS
 Sec. No. 35 T.5 R.13 BMRS
T. R. No. 30-40'

Intersection of the
 Centerlines of T. R. No. 30
 and U. S. R. No. 68.
 S. E. Corner to
 Sec. No. 36 T.5 R.13 BMRS.



- SYMBOLS:
- - Magnetic P. K. Nails Set.
 - ✕ - R. R. Spike Fd.
 - - 5/8" Rebars Fd.
 - - 5/8" x 30" Rebars Set. (Capped).

MARSHALL SURVEY - Part of the Southeast Quarter of Section No. 36 T.5 R.13 BMRS, Liberty Township, Logan County, Ohio.

SCALE: 1" = 40'	APPROVED BY:	DRAWN BY DEG
DATE: 8-24-2005		REVISED 9-8-2005 DEG

Daniel E. Gilbert
 Daniel E. Gilbert, P. S.
 Reg. Sur. No. 5402

DRAWING NUMBER
2005-005

INDEXED ON MAP
 7177
 S-369