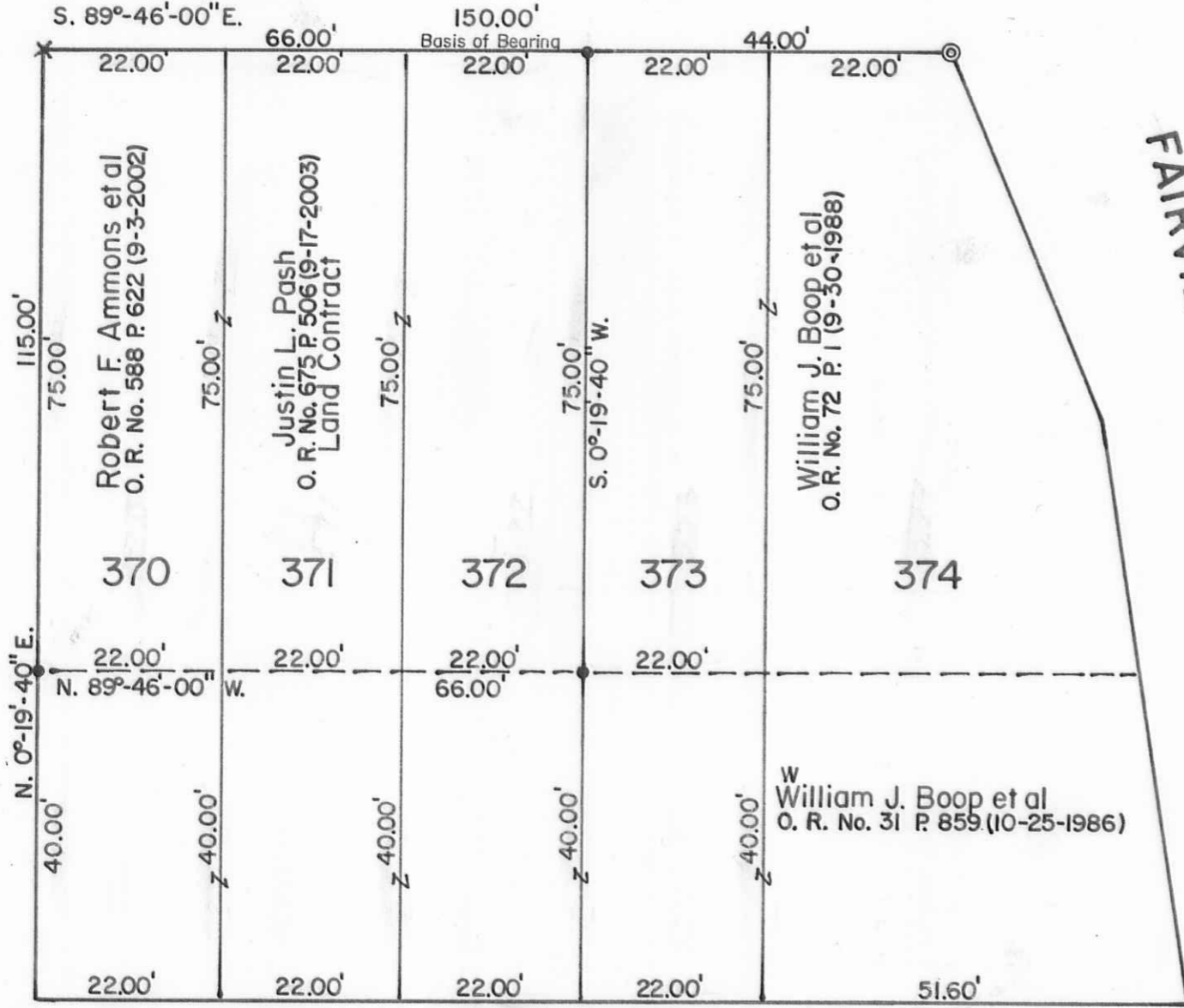


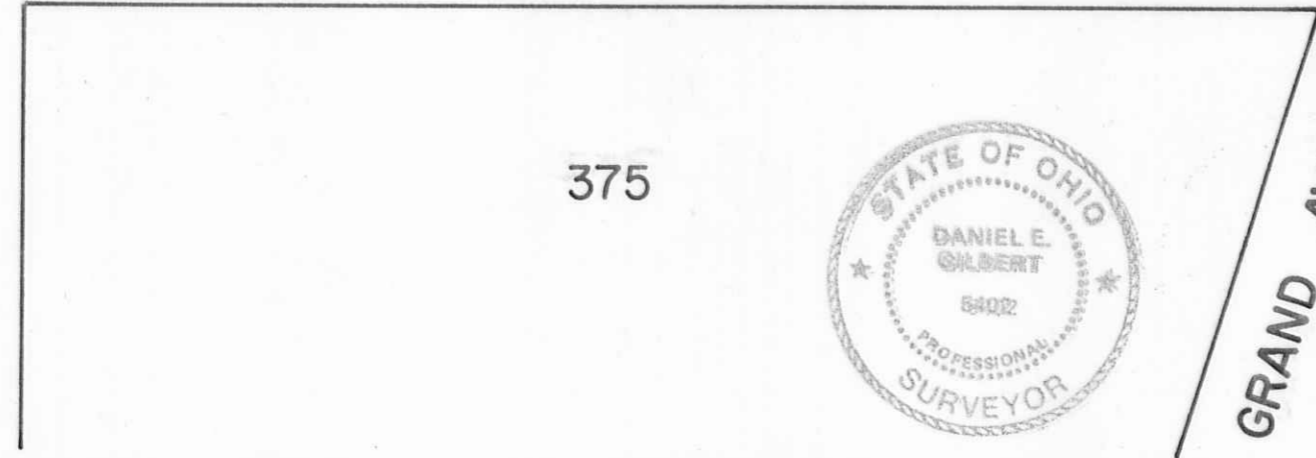
CENTER OR SUNNYSIDE STREET - 35'

369

UNNAMED STREET - 40'

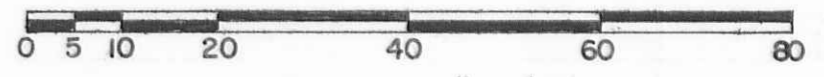


15' ALLEY



GRAND AVE. - 40'

FAIRVIEW AVENUE



Scale: 1" = 20'

SYMBOLS:

- - 1" Iron Pipe Fd.
- ⊙ - 2" Iron Pipe Fd.
- X - Chiseled "I" on Concrete Wall Set.
- - 5/8" x 30' Rebars Set. (Capped).

REFERENCE:
 SPRING GROVE ALLOTMENT.
 Plat Cab. A, Slide 134 (5-5-1911).

JUSTIN PASH SURVEY-Part of Lots No. 370-371-372, Village of Russells Point, Washington Township, Logan County, Ohio.		
SCALE: 1" = 20'	APPROVED BY:	DRAWN BY DEG
DATE: 3-13-2004		REVISED
 Daniel E. Gilbert, P.S. Reg. Sur. No. 5402		DRAWING NUMBER 2004-012

INDEXED ON MAP 4713

S-384