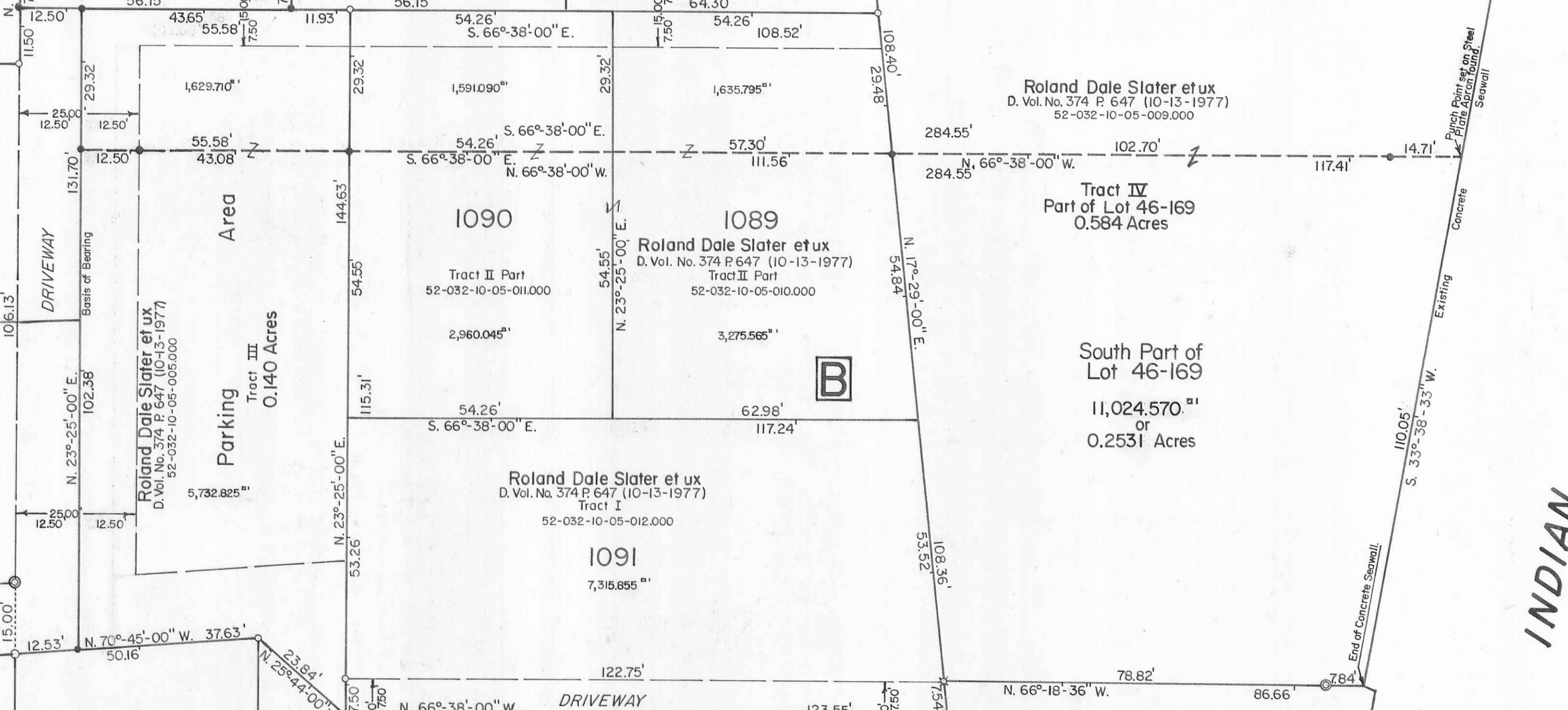


Jack R. Beatley  
O.R. No. 221 P. 665 (3-17-1999)  
52-032-10-05-008.000  
0.776 Acres



LAKE

INDIAN

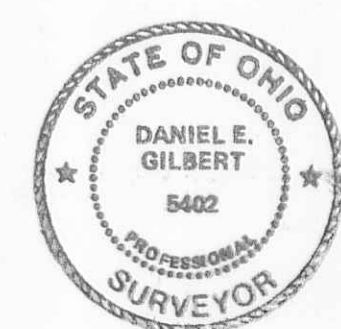
- SYMBOLS:**
- ⊗ - 1/2" Iron Pipe Fd.
  - - 3/4" Iron Pipes Fd.
  - ⊙ - 1" Iron Pipes Fd.
  - - 5/8" Rebars Fd.
  - - 5/8" x 30" Rebars Set. (Capped).
  - - P.K. Nail Fd.
  - ⊠ - R.R. Spike Fd.
- REFERENCE:**
- HARBOR VIEW ALLOTMENT, (5-24-1951)  
Plat Cabinet A Slide 289

**TRACT A**

Lot No. 1087	- 4,407,445 <sup>sq ft</sup> or 0.1012 Acres
Lot No. 1088	- 4,727,450 <sup>sq ft</sup> or 0.1085 Acres
Lot No. 1089 N. Part	- 1,635,795 <sup>sq ft</sup> or 0.0376 Acres
Lot No. 1090 N. Part	- 1,591,090 <sup>sq ft</sup> or 0.0365 Acres
Parking Area N. Part	- 1,629,710 <sup>sq ft</sup> or 0.0374 Acres
Lot No. 46-169 N. Part	- 14,383,020 <sup>sq ft</sup> or 0.3302 Acres
<b>Total</b>	<b>- 28,374,510<sup>sq ft</sup> or 0.6514 Acres</b>

**TRACT B**

Lot No. 1089 S. Part	- 3,275,565 <sup>sq ft</sup> or 0.0752 Acres
Lot No. 1090 S. Part	- 2,960,045 <sup>sq ft</sup> or 0.0680 Acres
Lot No. 1091	- 7,315,855 <sup>sq ft</sup> or 0.1679 Acres
Parking Area S. Part	- 5,732,825 <sup>sq ft</sup> or 0.1316 Acres
Lot No. 46-169 S. Part	- 11,024,570 <sup>sq ft</sup> or 0.2531 Acres
<b>Total</b>	<b>- 30,308,860<sup>sq ft</sup> or 0.6958 Acres</b>



Slater Survey - Lots in Harbor View Allotment + Acreage,  
Section No. 36 T.6S. R.8E., Village of Russells Point,  
Washington Township, Logan County, Ohio.

SCALE: 1" = 20'  
DATE: 7-30-2001  
DRAWN BY: DEG  
REVIEWED BY: DEG

Daniel E. Gilbert  
Daniel E. Gilbert, P.S.  
Reg. Sur. No. 5402

DRAWING NUMBER: 2001-024

INDEXED ON MAP 6998 5-441