

Gary F. Brackney  
 Deed Vol. No. 406 P. 33-35 (8-7-1984)  
 O. R. No. 485 P. 52-53 (2-23-2001)  
 23-063-00-00-017.000

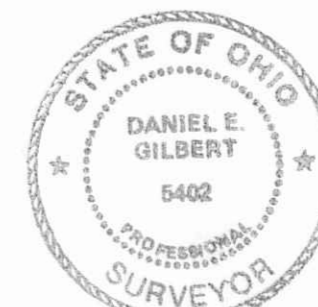
Tract I

98.940 Acres  
 - 12.093 Acres  
 86.847 Acres

John F. Maier et al  
 Deed Vol. No. 362 P. 265 (1-1-1976)  
 22-063-00-00-034.000

Tract One  
 Total - 105.77 Acres  
 17.75 Acres

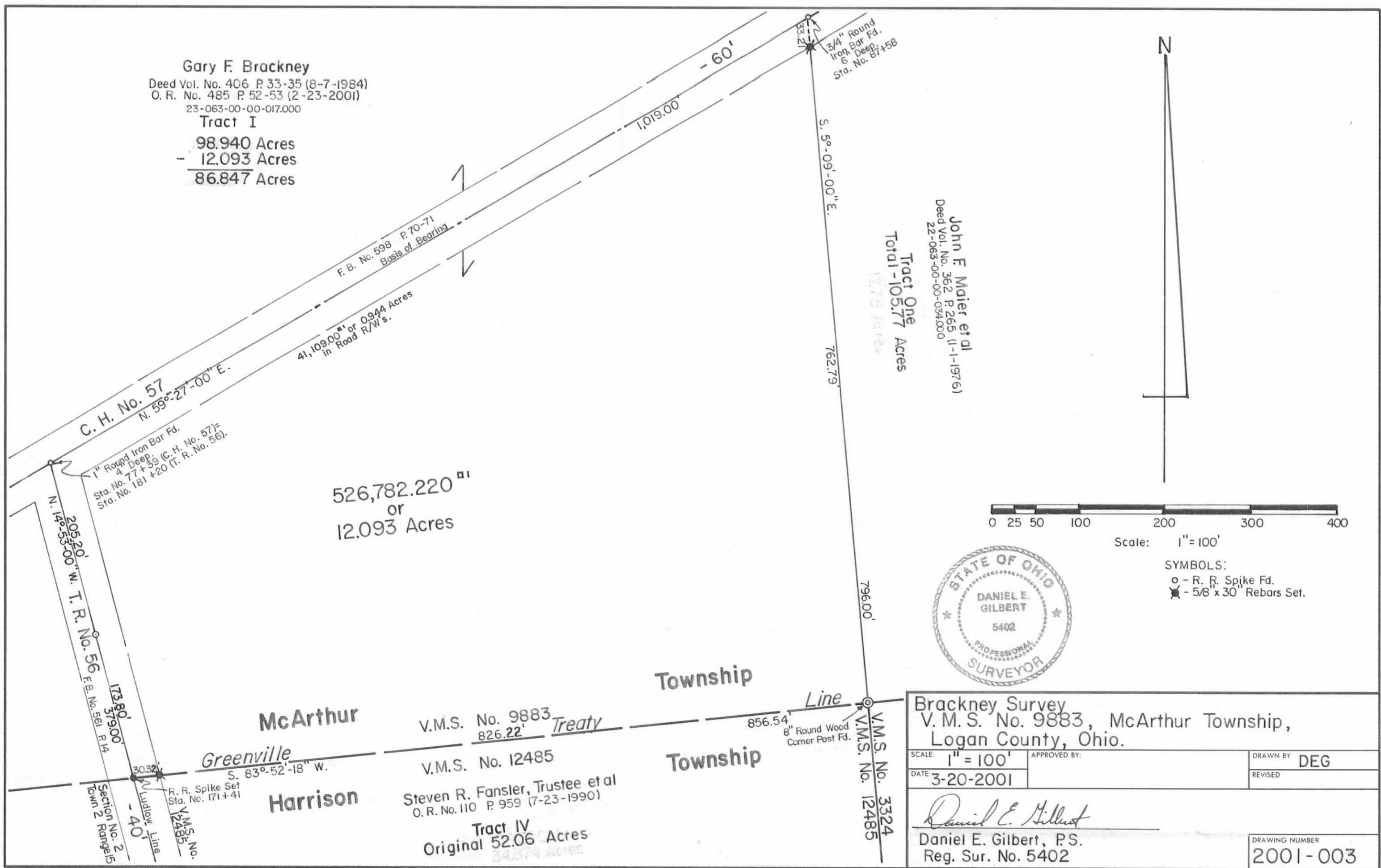
526,782.220 <sup>sq</sup>  
 or  
 12.093 Acres



Scale: 1" = 100'

SYMBOLS:

- o - R. R. Spike Fd.
- ⊗ - 5/8 x 30 Rebars Set.



Brackney Survey V. M. S. No. 9883, McArthur Township, Logan County, Ohio.		DRAWN BY <b>DEG</b>
SCALE: 1" = 100'	APPROVED BY:	REVISED
DATE: 3-20-2001	 Daniel E. Gilbert, P.S. Reg. Sur. No. 5402	
DRAWING NUMBER <b>2001-003</b>		

INDEXED ON MAP  
9363

S-453