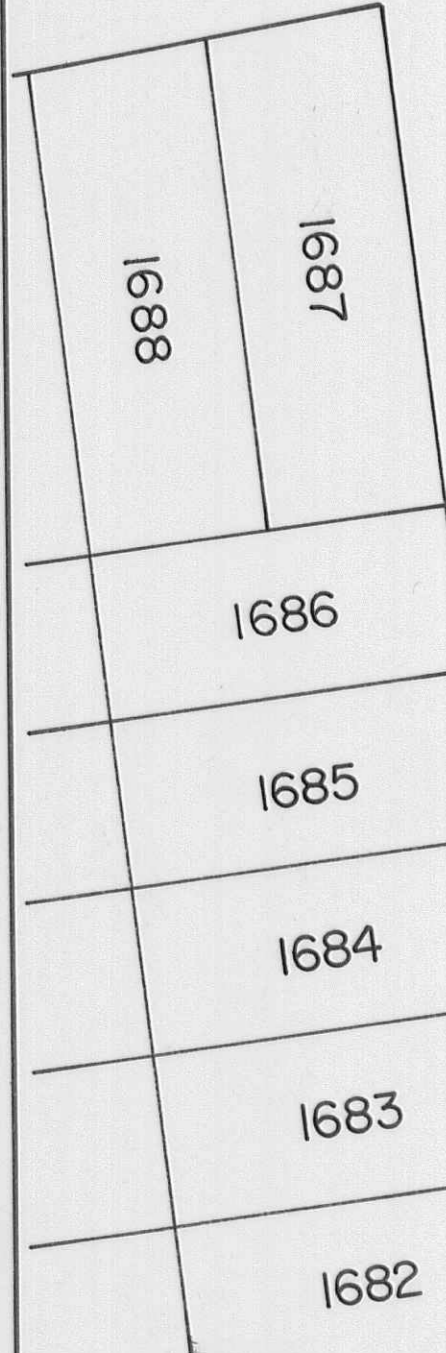
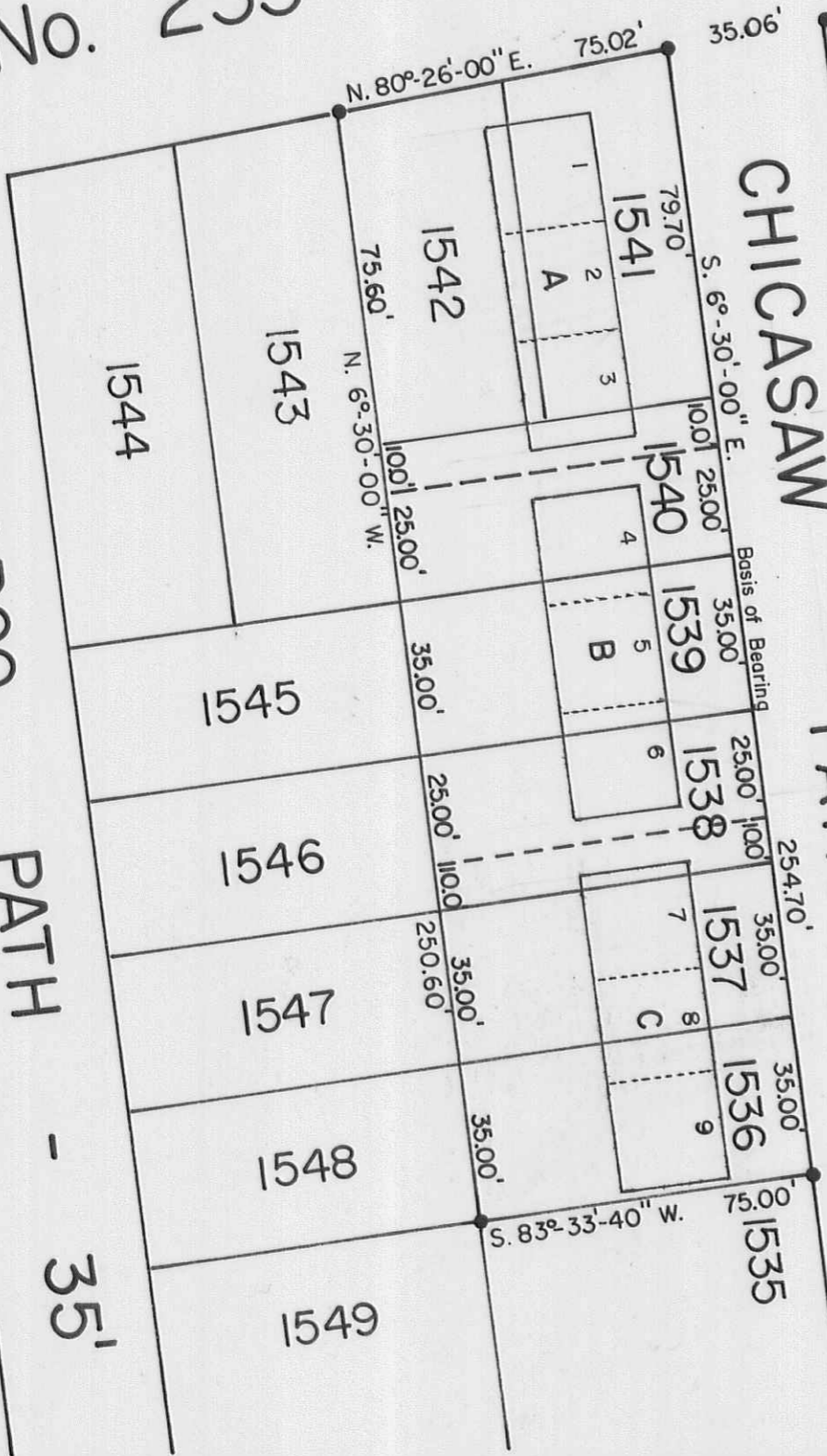


S. R. No. 235

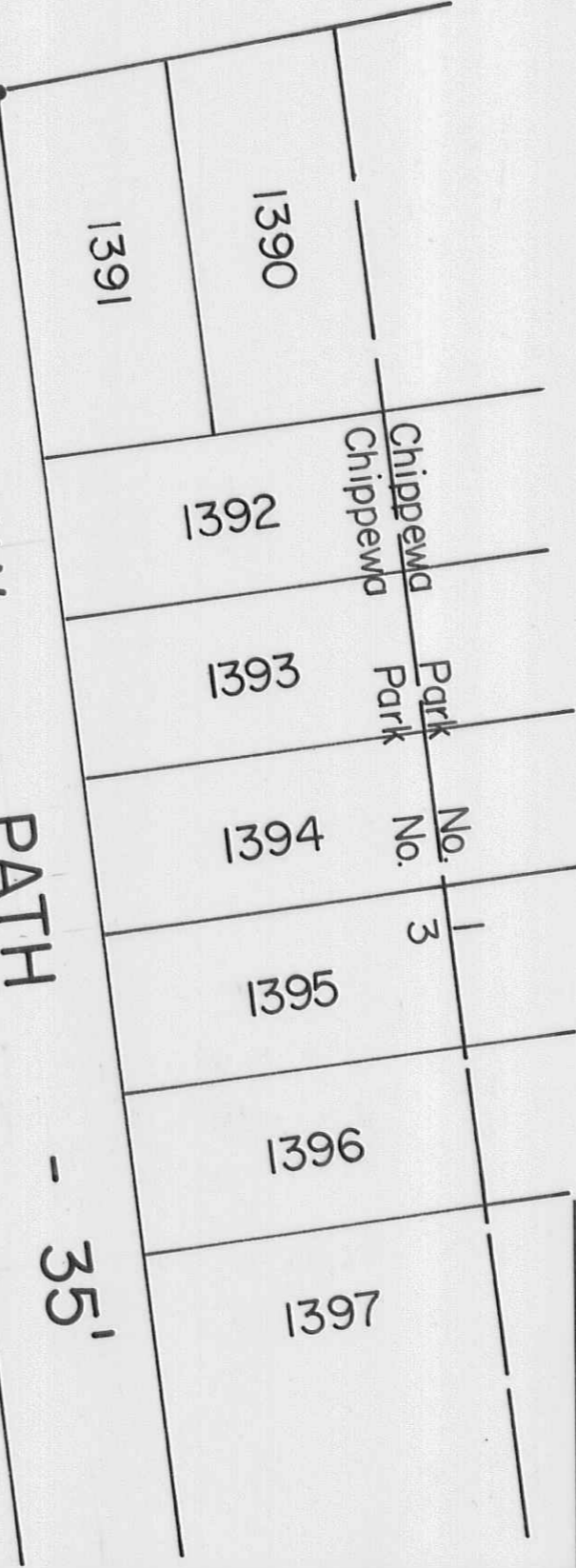
- 60'



KICKAPOO PATH - 35'



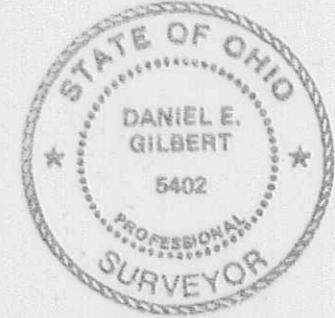
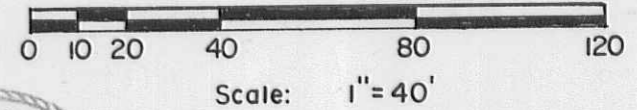
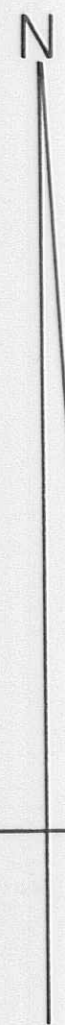
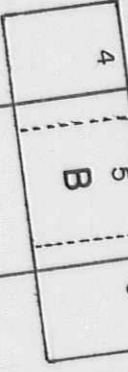
CHICAWASAW PATH - 35'



Chippewa Park No. 3

Survey bearings and distances:

- N. 80°-26'-00" E. 75.02'
- 35.06'
- 79.70'
- 75.60'
- N. 6°-30'-00" W. 100.1'
- 25.00'
- 100.1'
- 35.00'
- 35.00'
- 25.00'
- 100.1'
- 25.470'
- 35.00'
- 35.00'
- 35.00'
- 35.00'
- 35.00'
- 35.00'
- 75.00'
- S. 83°-33'-40" W. 75.00'



Reference:
Chippewa Park No. 3
Plat Cab. A Slide No. 235

Symbols:
● - 5/8" x 30" Rebars Fd.

MILLER APARTMENTS-Lots No. 1536 thru 1542,
Chippewa Park No. 3, Stokes Township,
Logan County, Ohio.

SCALE: 1" = 40'	APPROVED BY:	DRAWN BY: DEG
DATE: 11-5-1998		REVISED:

Daniel E. Gilbert
Daniel E. Gilbert, P.S.
Reg. Sur. No. 5402

DRAWING NUMBER
098-035

INDEXED ON MAP
9122

S-497