

Daniel B. Hess
O.R. No. 264 P. 433 (8-15-1995)
40-066-00-00-028.015

11.492 Acres

Douglas L. Thompson et ux
O.R. No. 234 P. 162 (7-26-1994)
40-066-00-00-028.012
1.011 Acres

Douglas L. Thompson et ux
O.R. No. 136 P. 941 (9-20-1991)
40-066-00-00-028.001
1.060 Acres

Jeffery Lynn Kerns et al
O.R. No. 181 P. 781 (2-12-1993)
40-066-00-00-028.004
1.365 Acres

Jeffery Lynn Kerns et al
O.R. No. 257 P. 228 (5-25-1995)
40-066-00-00-028.014

5.931 Acres
- 0.837 Acres
5.094 Acres
- 0.153 Acres
4.941 Acres

Todd E. Shields
O.R. No. 234 P. 93 (7-18-1994)
40-066-00-00-028.011
2.000 Acres

C.H. No. 5

Sta. 38+42.50
3/4" Iron Bar Fd.
Δ=5°-02' Lt.

Area in Road
29.790^{sq}
or
0.00068 Acres

1,603.300^{sq}
or
0.037 Acres

Scott R. Davis et ux
O.R. No. 367 P. 701 (6-10-1998)
40-066-00-00-028.003

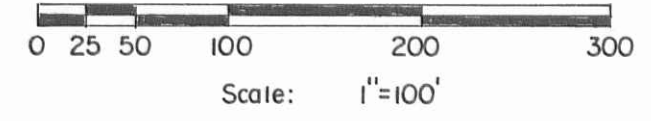
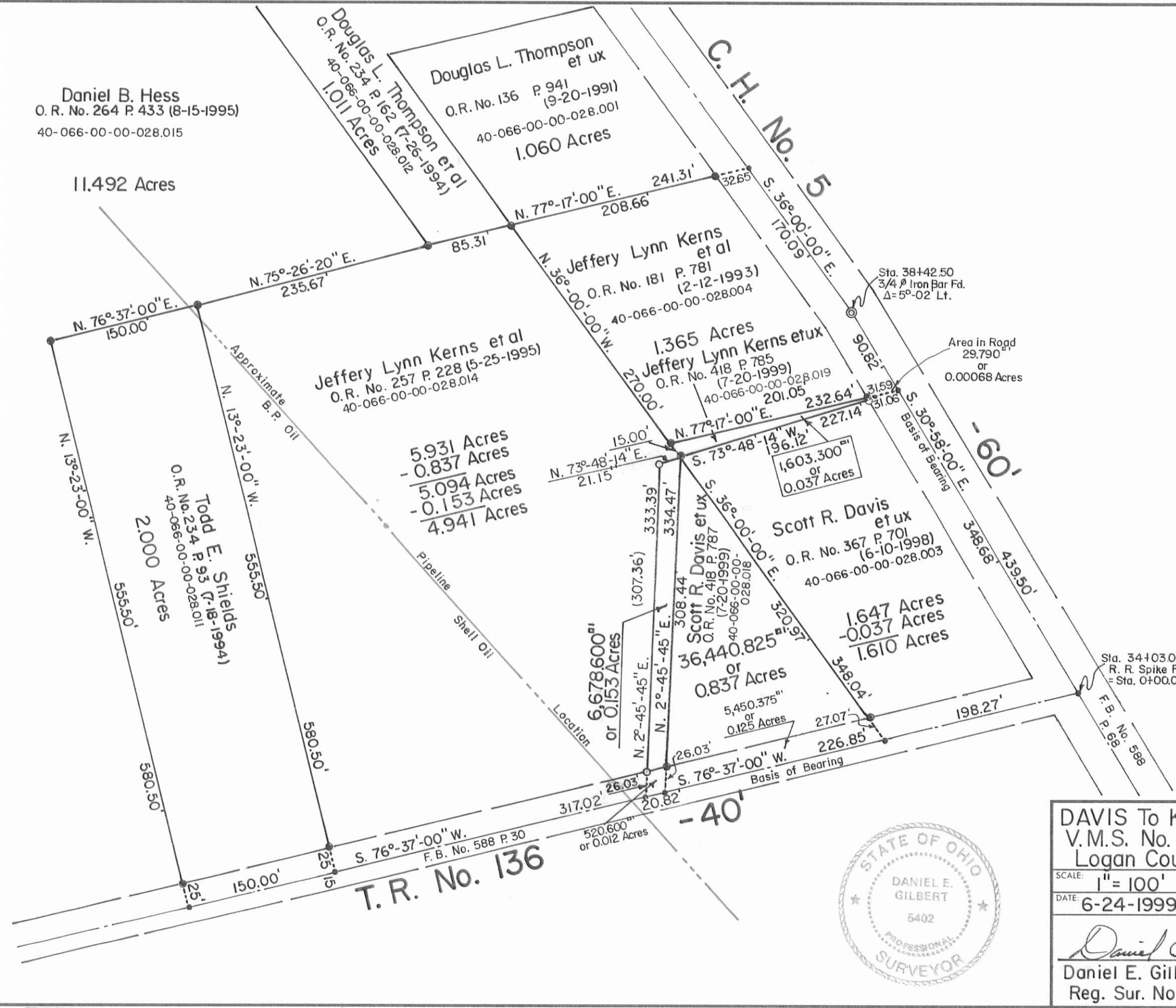
1.647 Acres
- 0.037 Acres
1.610 Acres

6,678.600^{sq}
or
0.153 Acres

36,440.825^{sq}
or
0.837 Acres

5,450.375^{sq}
or
0.125 Acres

520.600^{sq}
or
0.012 Acres



- SYMBOLS:
- - R.R. Spike Set.
 - - R.R. Spikes Fd.
 - - 5/8" x 30" Rebars Set.
 - - 5/8" x 30" Rebars Fd.

DAVIS To KERNS, KERNS To DAVIS SURVEYS
V.M.S. No. 3323, Rushcreek Township,
Logan County, Ohio.

SCALE: 1" = 100'	APPROVED BY:	DRAWN BY: DEG
DATE: 6-24-1999		REVISED: 8-20-1999

Daniel E. Gilbert
Daniel E. Gilbert, P.S.
Reg. Sur. No. 5402

DRAWING NUMBER
099-022A



INDEXED ON MAP
5175

S-531