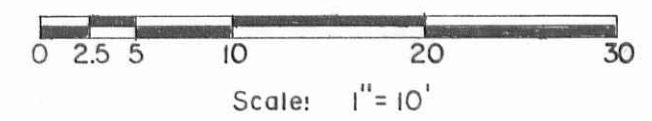
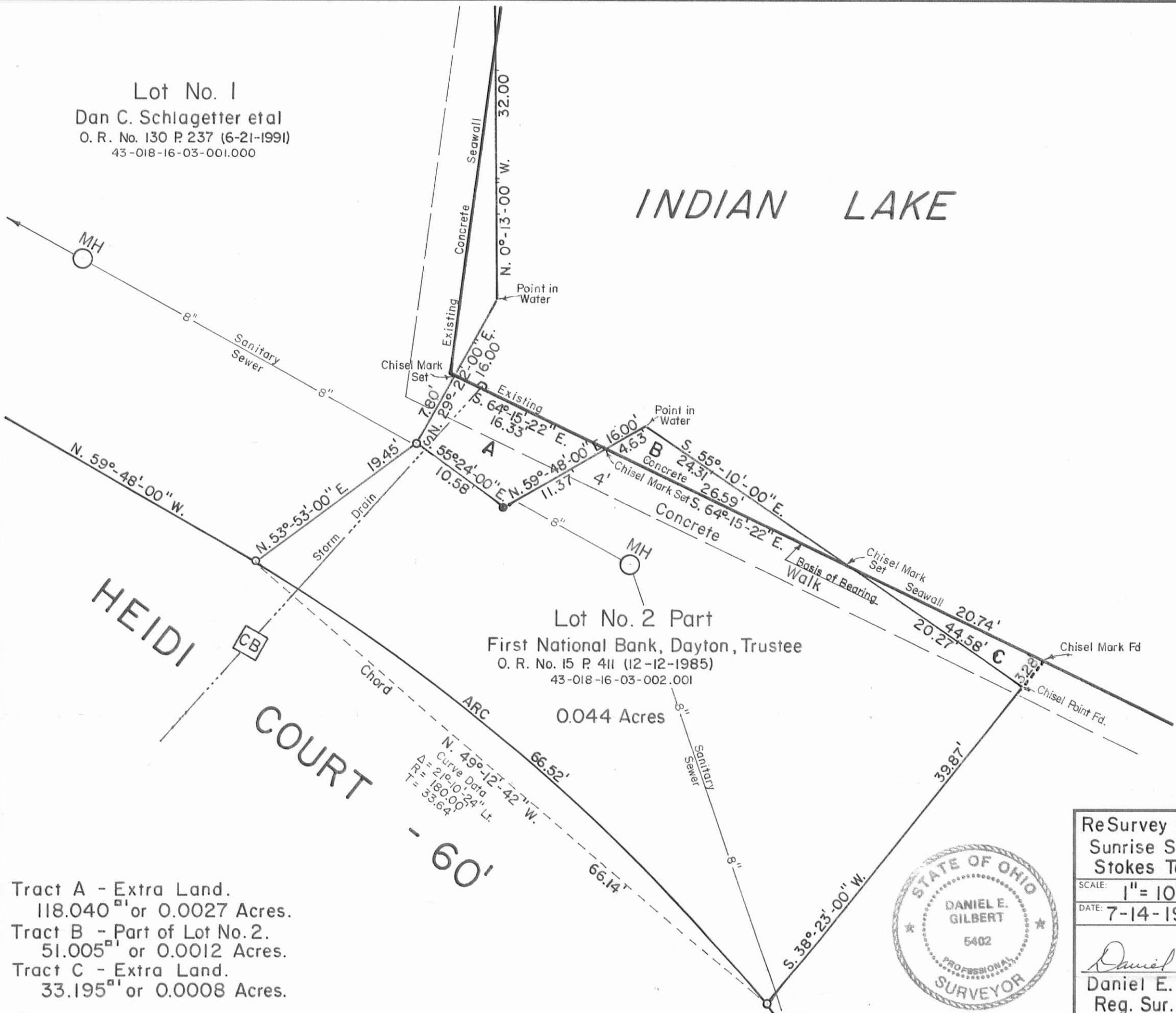


Lot No. 1  
 Dan C. Schlagetter et al  
 O. R. No. 130 P. 237 (6-21-1991)  
 43-018-16-03-001.000

# INDIAN LAKE



Reference:  
 Sunrise Shores Subdivision (3-15-1979)  
 Plat Cabinet A Slide 601

Symbols:  
 ○ - 5/8" Rebars Fd.  
 ● - 5/8" x 30" Rebars Set.

Tract A - Extra Land.  
 118.040<sup>sq</sup> or 0.0027 Acres.  
 Tract B - Part of Lot No. 2.  
 51.005<sup>sq</sup> or 0.0012 Acres.  
 Tract C - Extra Land.  
 33.195<sup>sq</sup> or 0.0008 Acres.

Curve Data  
 Δ = 21°-10'-24" Lt.  
 R = 180.00'  
 T = 33.64'



ReSurvey of Lot No. 2 Part plus extra land in  
 Sunrise Shores Subdivision, V. M. S. No. 12276,  
 Stokes Township, Logan County, Ohio.

SCALE: 1" = 10'	APPROVED BY:	DRAWN BY: DEG
DATE: 7-14-1997		REVISED:

*Daniel E. Gilbert*  
 Daniel E. Gilbert, P.S.  
 Reg. Sur. No. 5402

DRAWING NUMBER: 097-024

INDEXED ON MAP  
 7126

S-556