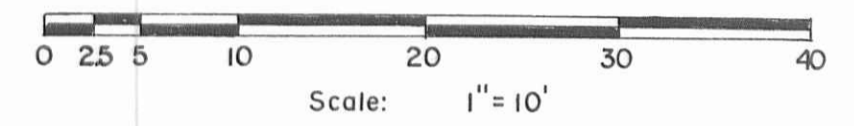
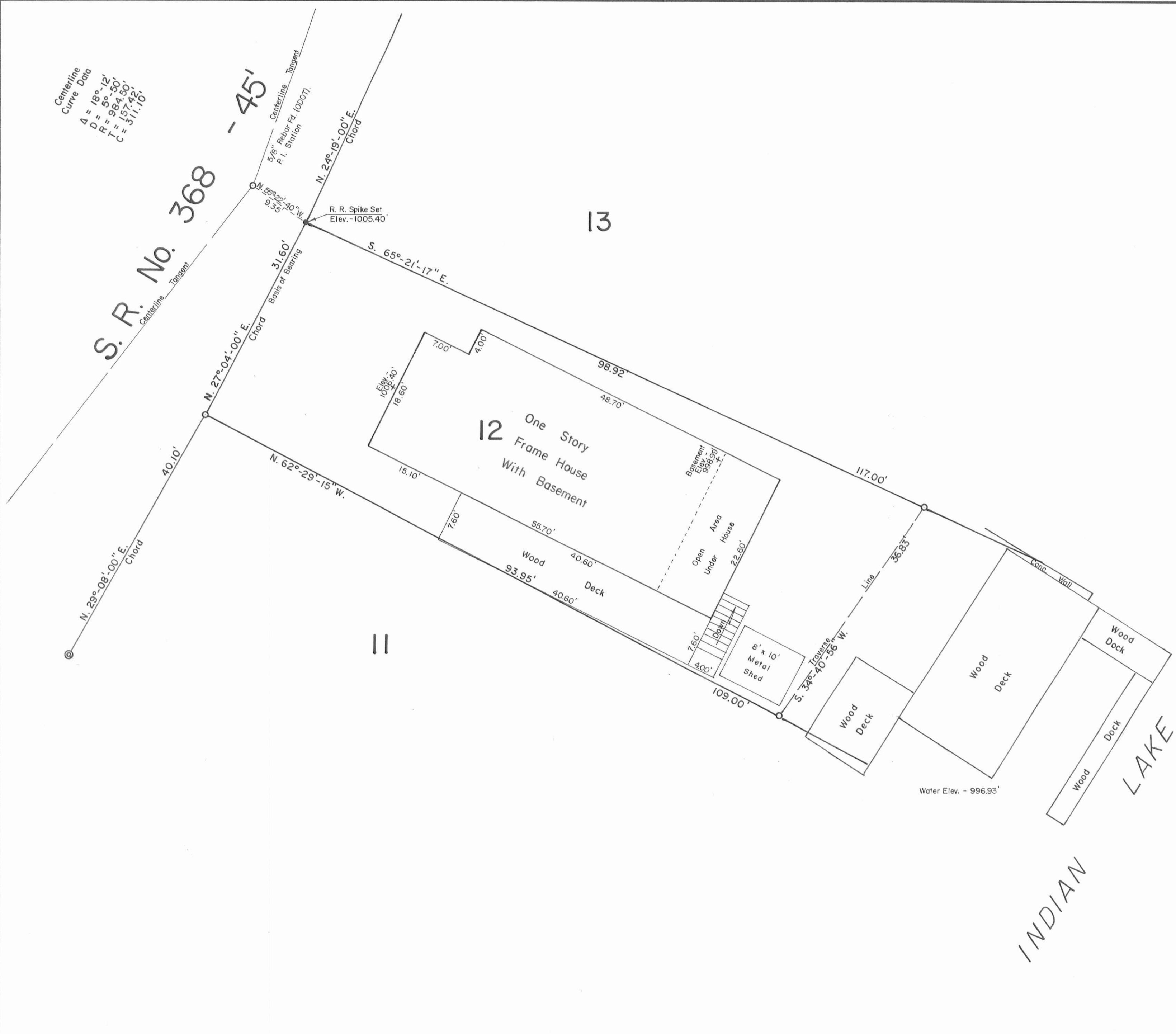


Centerline  
Curve Data  
 $\Delta = 18^{\circ}12'$   
 $R = 984.50'$   
 $L = 157.42'$   
 $C = 311.10'$

S. R. No. 368

- 45'



Reference:  
 Lakeridge Subdivision No. 1 (7-1-1957).  
 Plat Cab. A Slide 354.

Symbols:  
 ○ - 3/4" O.D. Iron Pipes Fd.  
 ⊙ - 1 1/2" O.D. Iron Pipe Fd.



Survey of Lot No. 12, Lakeridge Subdivision No. 1,  
 V.M.S. No. 12276, Lakeridge Island,  
 Stokes Township, Logan County, Ohio.

SCALE: 1" = 10'	APPROVED BY	DRAWN BY DEG
DATE: 9-13-1997		
<i>Daniel E. Gilbert</i> Daniel E. Gilbert, P.S. Reg. Sur. No. 5402		DRAWING NUMBER 097-034

INDEXED ON MAP  
6312

S-559