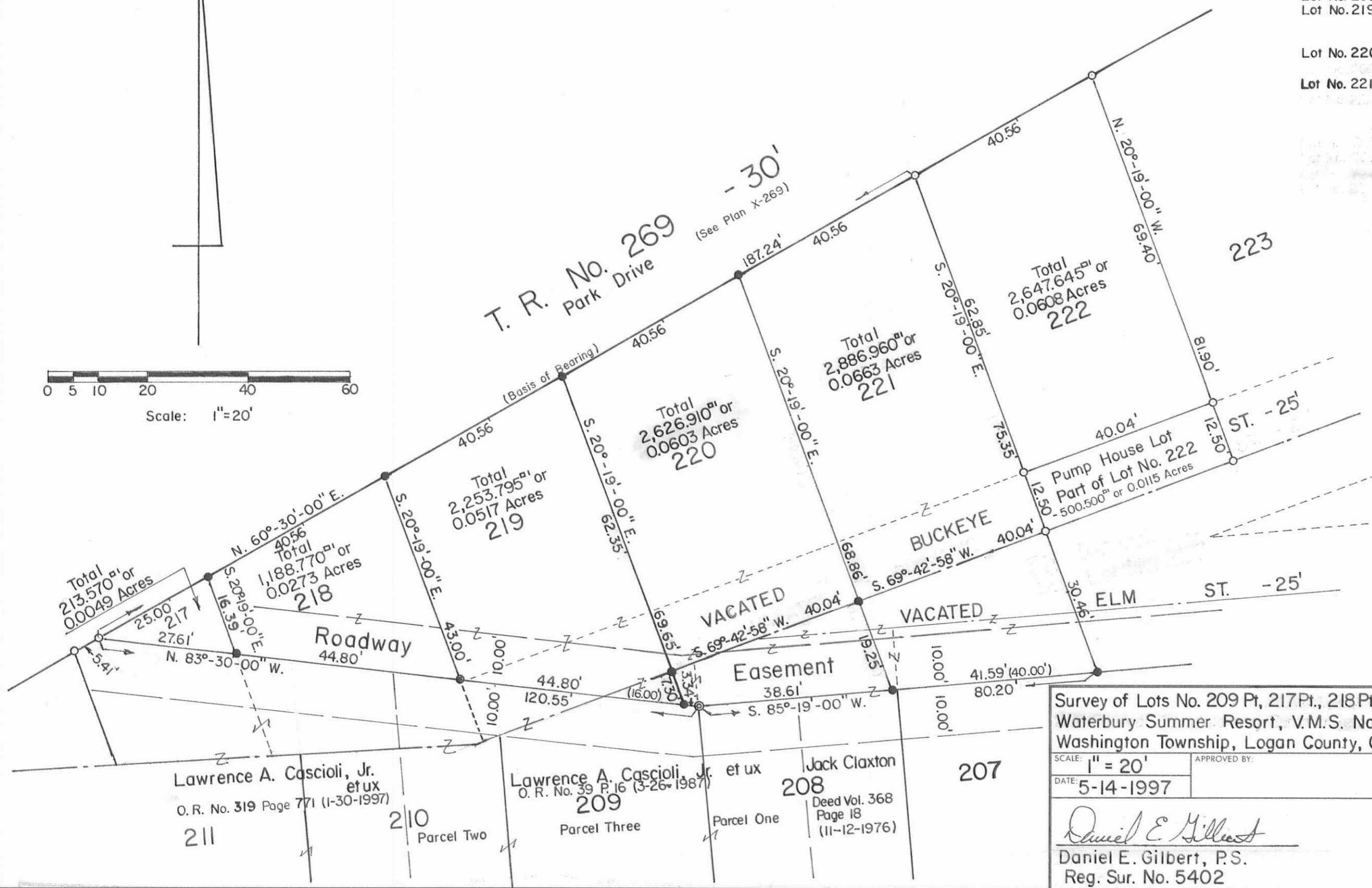
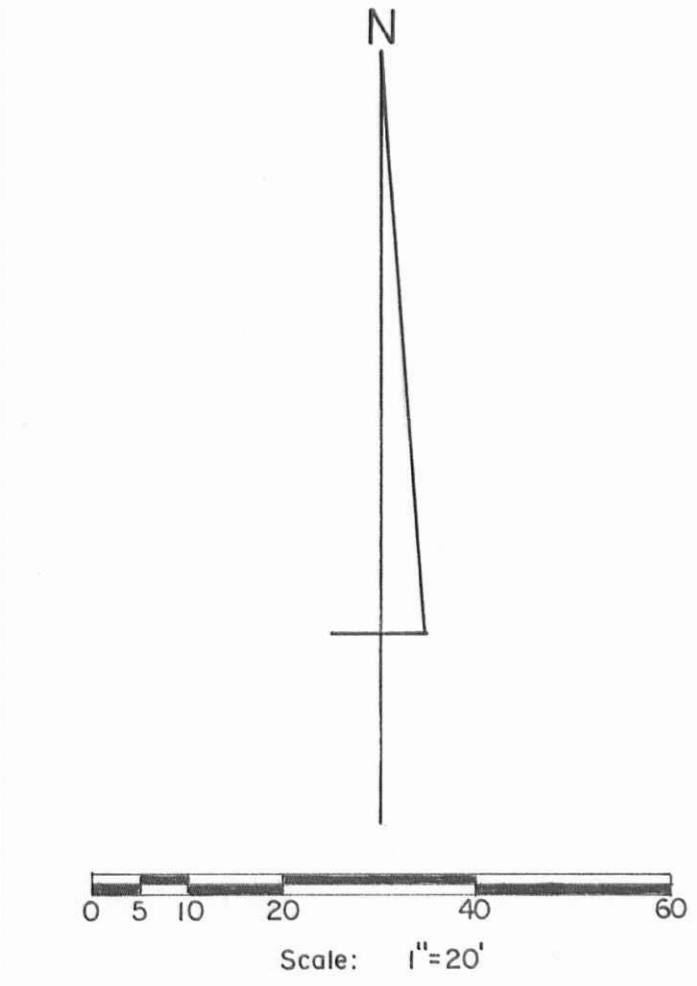


Lot Area Breakdown

Lot No. 217 Pt.	213.570 ^{sq} ft or 0.0049 Acres
Lot No. 218 Pt.	1,188.770 ^{sq} ft or 0.0273 Acres
Lot No. 209 Pt.	50.750 ^{sq} ft or 0.0012 Acres
Lot No. 219 Pt.	2,203.045 ^{sq} ft or 0.0505 Acres
	2,253.795 ^{sq} ft or 0.0517 Acres
Lot No. 220 Pt.	2,626.910 ^{sq} ft or 0.0603 Acres
Lot No. 221 Pt.	2,886.960 ^{sq} ft or 0.0663 Acres

Reference:
 Waterbury Summer Resort.
 August 12, 1925
 Plat Cab. A Slide 223-225.

Symbols:
 ⊙ - 3/4" Iron Pipe Fd.
 ○ - 5/8" Rebars Fd.
 ● - 5/8" x 30" Rebars Set.



Survey of Lots No. 209 Pt, 217Pt., 218Pt., 219Pt., 220 Pt. & 221 Pt.,
 Waterbury Summer Resort, V.M.S. No. 9925-9946-10121,
 Washington Township, Logan County, Ohio.

SCALE: 1" = 20'	APPROVED BY:	DRAWN BY: DEG
DATE: 5-14-1997		REVISED: 10-7-1997
Daniel E. Gilbert Daniel E. Gilbert, P.S. Reg. Sur. No. 5402		DRAWING NUMBER: 097-011

INDEXED ON MAP
 4751

S-562