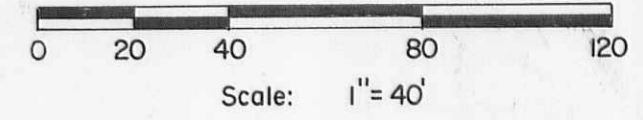
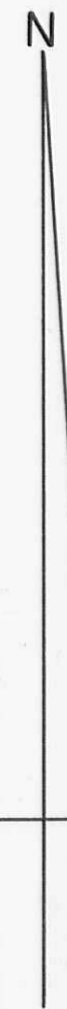
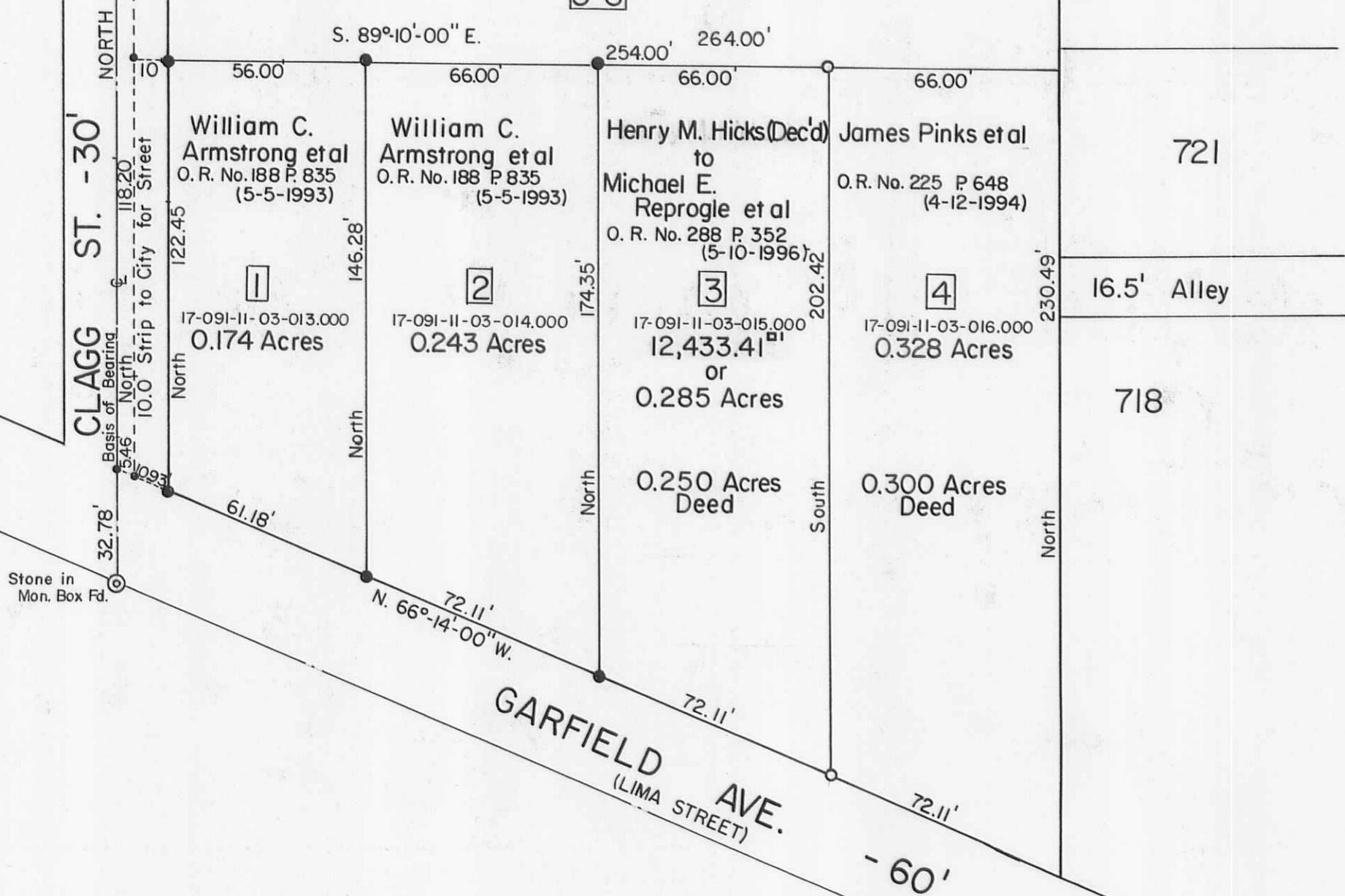


John P. Horn et al  
 O. R. No. 236 P. 974 (8-23-1994)  
 17-091-11-03-012.000

0.962 Acres  
 1.000 Acres Deed  
 5-6



REFERENCE:  
 Subdivision of Lots No. 1-12 inclusive, for  
 Margaret Pollock, Guardian of Mary P. and Mathew W.  
 Pollock as recorded in Drawer P-1 of the Logan County  
 Probate Records (6-7-1869), Logan County Historical Society.  
 Also on file in Logan County Engineers Office (Map Room).

HICKS (Dec'd) to Reprogle Survey - Section No. 35 T.4 R.14 B.M.R.S.,  
 City of Bellefontaine, Lake Township, Logan County, Ohio.  
 Per. Par. No. 17-091-11-03-015.000.

SCALE: 1" = 40'	APPROVED BY:	DRAWN BY DEG
DATE: 6-21-1996		REVISED

*Daniel E. Gilbert*  
 Daniel E. Gilbert, P.S.  
 Reg. Sur. No. 5402

DRAWING NUMBER  
 096-035

- Symbols:
- - P. K<sub>1</sub> Nails Fd.
  - - 5/8" x 30" Rebars Fd.
  - - 5/8" x 30" Rebars Set.

INDEXED ON MAP  
 8749



S-591