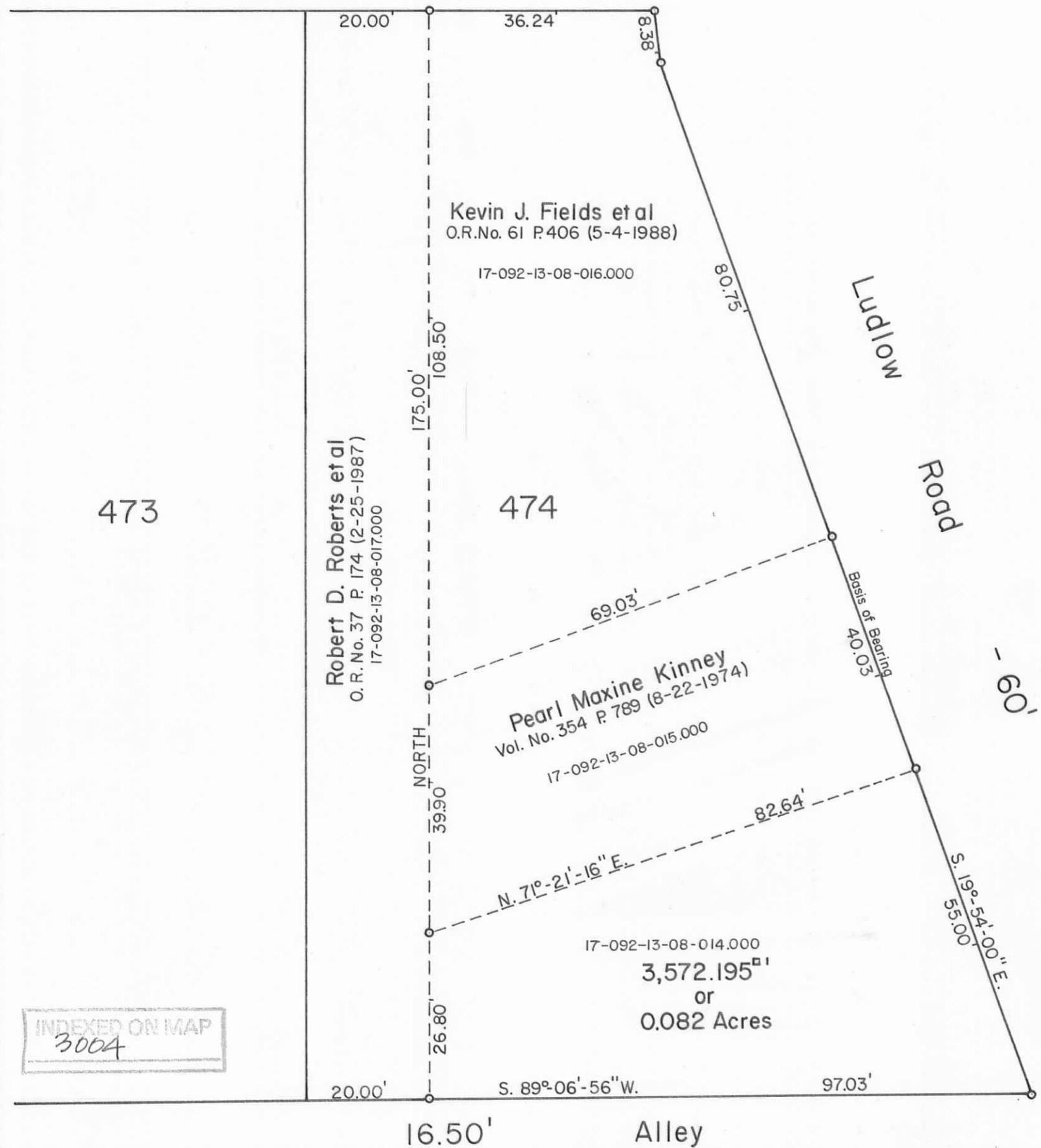
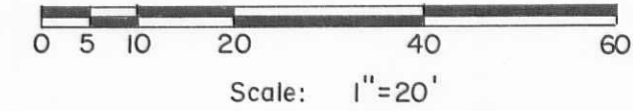
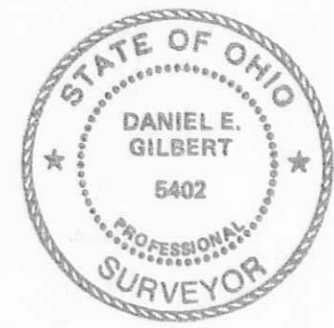


E. Auburn Ave. - 60'



INDEXED ON MAP  
300A



Reference Deed:  
Lot No. 474 Part.  
Susan M. Poppe et vir.  
O.R. No. 90 P. 968 (8-17-1989).  
Per. Par. No. 17-092-13-08-014.000

SYMBOLS:  
o - 1/2" Iron Pipes found on all corners.

POPPE SURVEY - Southeast Part of Lot No. 474, McCullough's Addition, City of Bellefontaine, Lake Township, Logan County, Ohio.		
SCALE: 1" = 20'	APPROVED BY:	DRAWN BY DEG
DATE: 10-11-1994		REVISED
 Daniel E. Gilbert, P.S. Reg. Sur. No. 5402		DRAWING NUMBER 094-066

S-425