

Gerald E. Volk, Inc.
 O. R. No. 58 P. 793 (3-17-1988)
 40-066-00-00-029,000
 124.25 Acres

To Dan Hess
 11.492 Acres
 (095-013)

108,428.950^{sq}
 or
 2.489 Acres

Todd E. Shields
 O. R. No. 234 P. 93 (7-18-1994)
 40-066-00-00-028,011
 2.000 Acres

Richard T. Shoffner et ux
 Vol. No. 382 P. 12 (3-9-1979)
 40-066-00-00-019,000
 0.918 Acres

Carol D. Shields
 Vol. No. 377 P. 476 (7-11-1978)
 40-066-00-00-018,000
 0.918 Acres

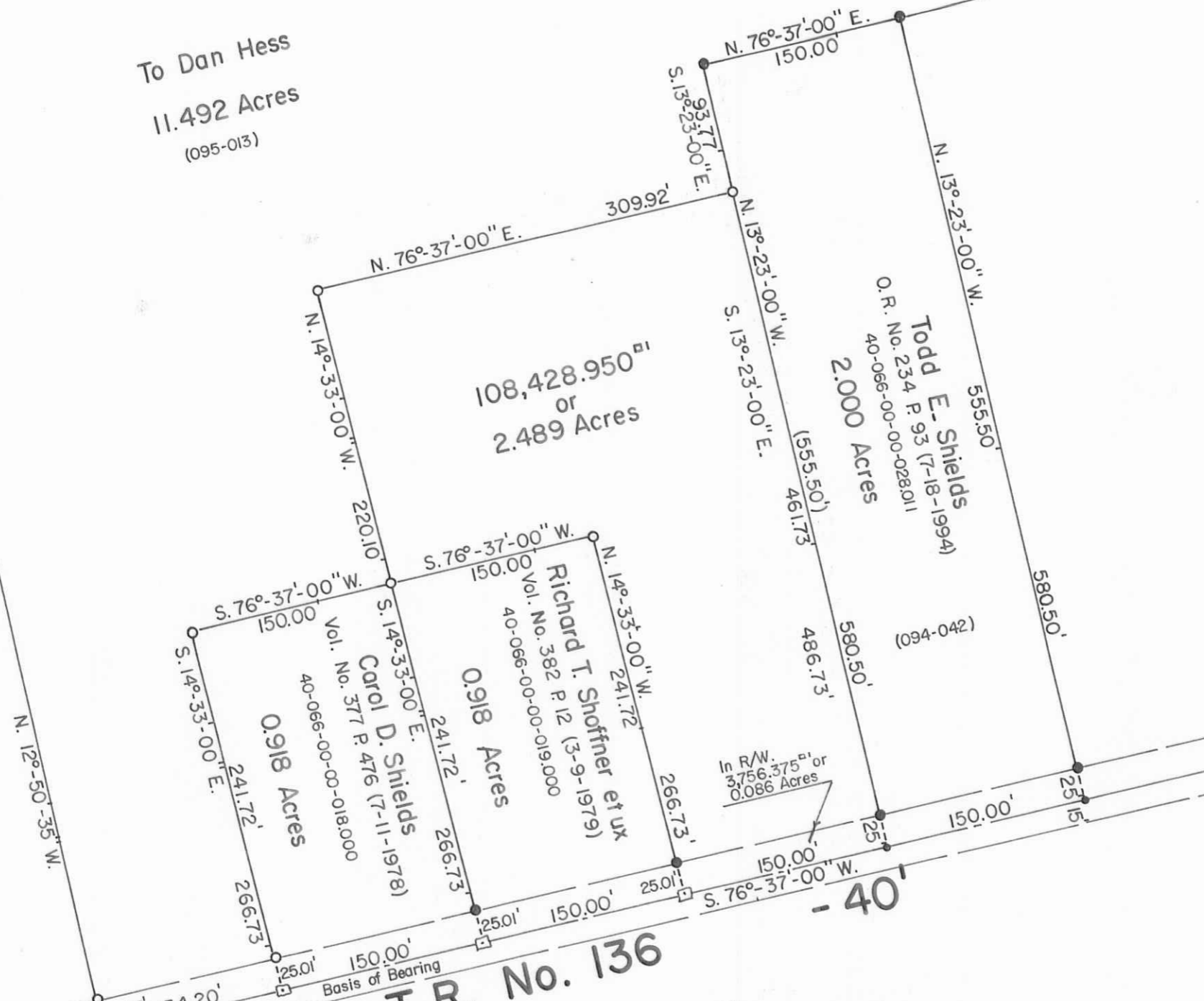
In R/W.
 3,756.375^{sq} or
 0.086 Acres

T. R. No. 136

Chester A. Alspaugh et ux
 Vol. No. 199 P. 392 (2-7-1950)
 40-066-00-00-028,000
 86.89 Acres-Original

Sta. No. 14+99 (14+97.48)
 5/8" Rebar Fd.
 F. B. No. 588 P. 30.

N. 12°-50'-35" W.



Scale: 1" = 100'

SYMBOLS:

- - R. R. Spikes Fd.
- - 5/8" x 30" Rebars Fd.
- - 5/8" x 30" Rebars Set.
- - Bridge Spikes Fd.

ALSPAUGH To SHOFFNER SURVEY
 V.M.S. No. 3323, Rushcreek Township,
 Logan County, Ohio.

SCALE: 1" = 100'
 DATE: 4-3-1995

APPROVED BY:
 DRAWN BY DEG
 REVISED



Daniel E. Gilbert
 Daniel E. Gilbert, P.S.
 Reg. Sur. No. 5402

DRAWING NUMBER
 095-015

INDEXED ON MAP
 5175

5629