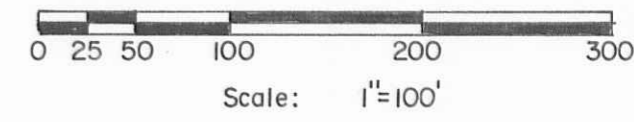
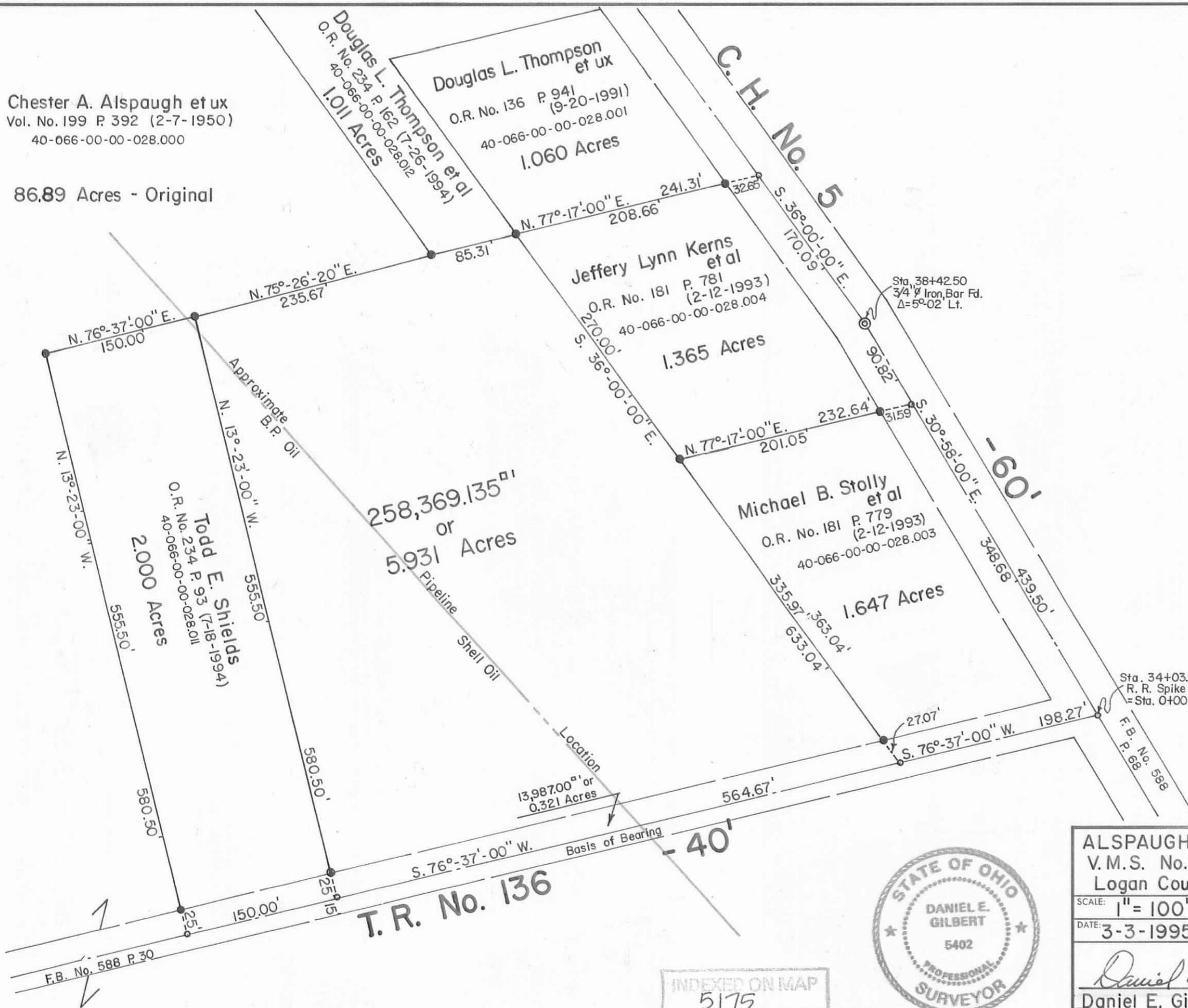


Chester A. Alspaugh et ux  
 Vol. No. 199 P 392 (2-7-1950)  
 40-066-00-00-028.000

86.89 Acres - Original



**SYMBOLS:**  
 ● - R. R. Spikes Fd.  
 ● - 5/8" x 30" Rebars Fd.



INDEXED ON MAP  
 5175

<b>ALSPAUGH To KERNS SURVEY</b> V.M.S. No. 3323, Rushcreek Township, Logan County, Ohio.		
SCALE: 1"=100'	APPROVED BY:	DRAWN BY DEG
DATE: 3-3-1995		REVISED
<i>Daniel E. Gilbert</i> Daniel E. Gilbert, P.S. Reg. Sur. No. 5402		DRAWING NUMBER 095-010

S-630