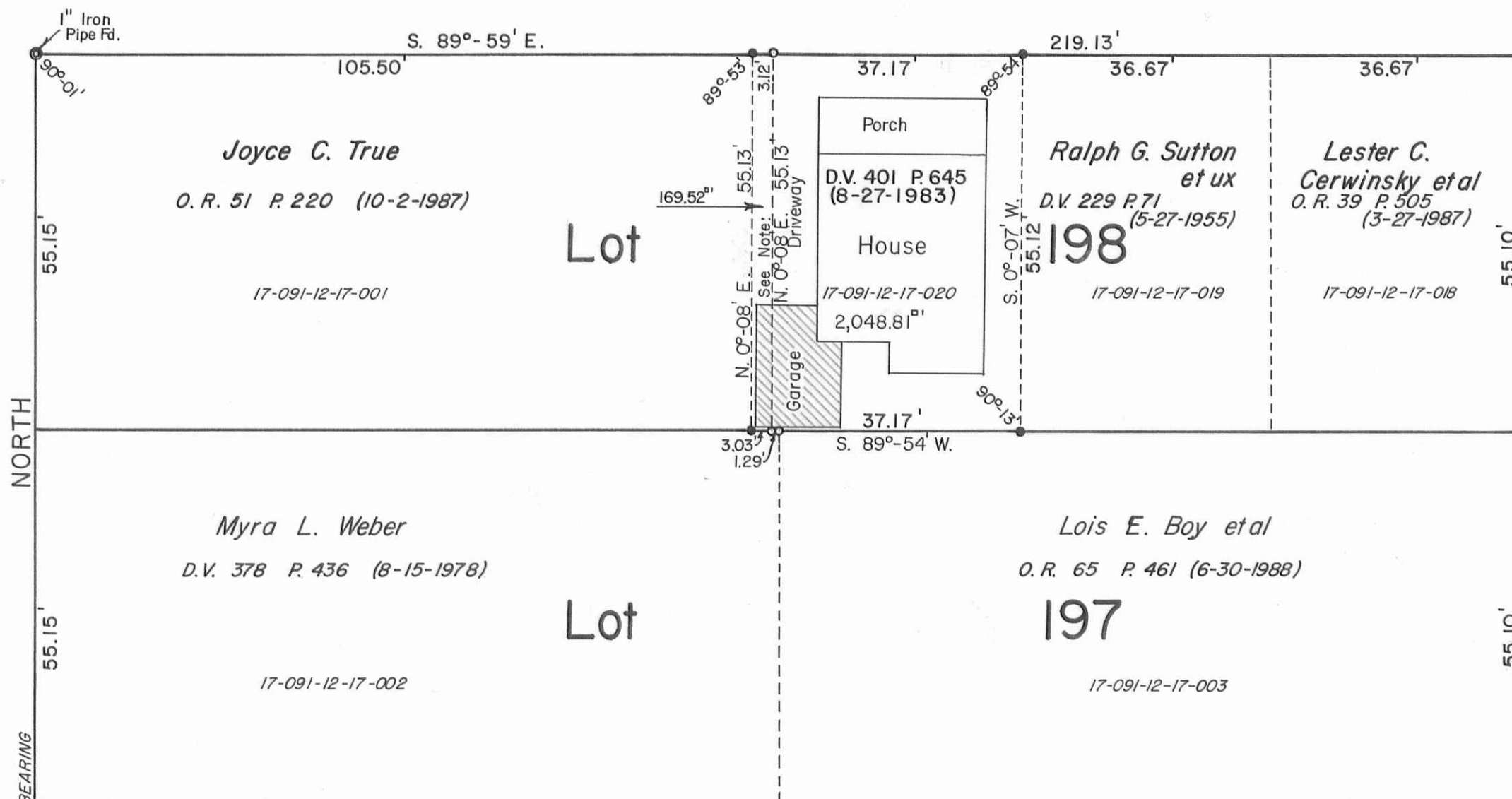


East Brown Avenue - 40'

North Madriver Street - 60'



BASIS OF BEARING NORTH

- - 3/4" Iron Pipes Fd.
- - 5/8" x 30" Rebars Fd. or Set.

Note:
The 3.0 foot strip shown and monumented, was surveyed in September, 1965 by F. F. Wright, P.S., Reg. Sur. No. 1673 (now deceased) for Harley Kress, who owned Joyce C. True's part of Lot No. 185. I believe it was surveyed to clear the garage on the part of said lot belonging to Bechtel. I found no transfer of this strip in the Deed Records. See Survey Index No. 3846, Logan County Engineers Office.



BECHTEL SURVEY - Lot No. 198 Part
City of Bellefontaine, Lake Township, Logan County, Ohio.

SCALE: 1" = 20'	APPROVED BY:	DRAWN BY DEG
DATE: 6-26-1989		REVISED 11-8-1989

Daniel E. Gilbert
Daniel E. Gilbert, P.S.
Reg. Sur. No. 5402

DRAWING NUMBER
089-034

INDEXED ON MAP
3846

S-654



Fountain Place - 16.50'