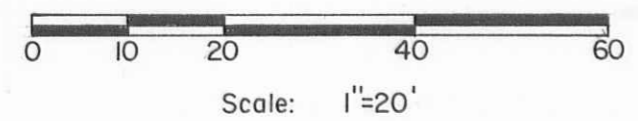
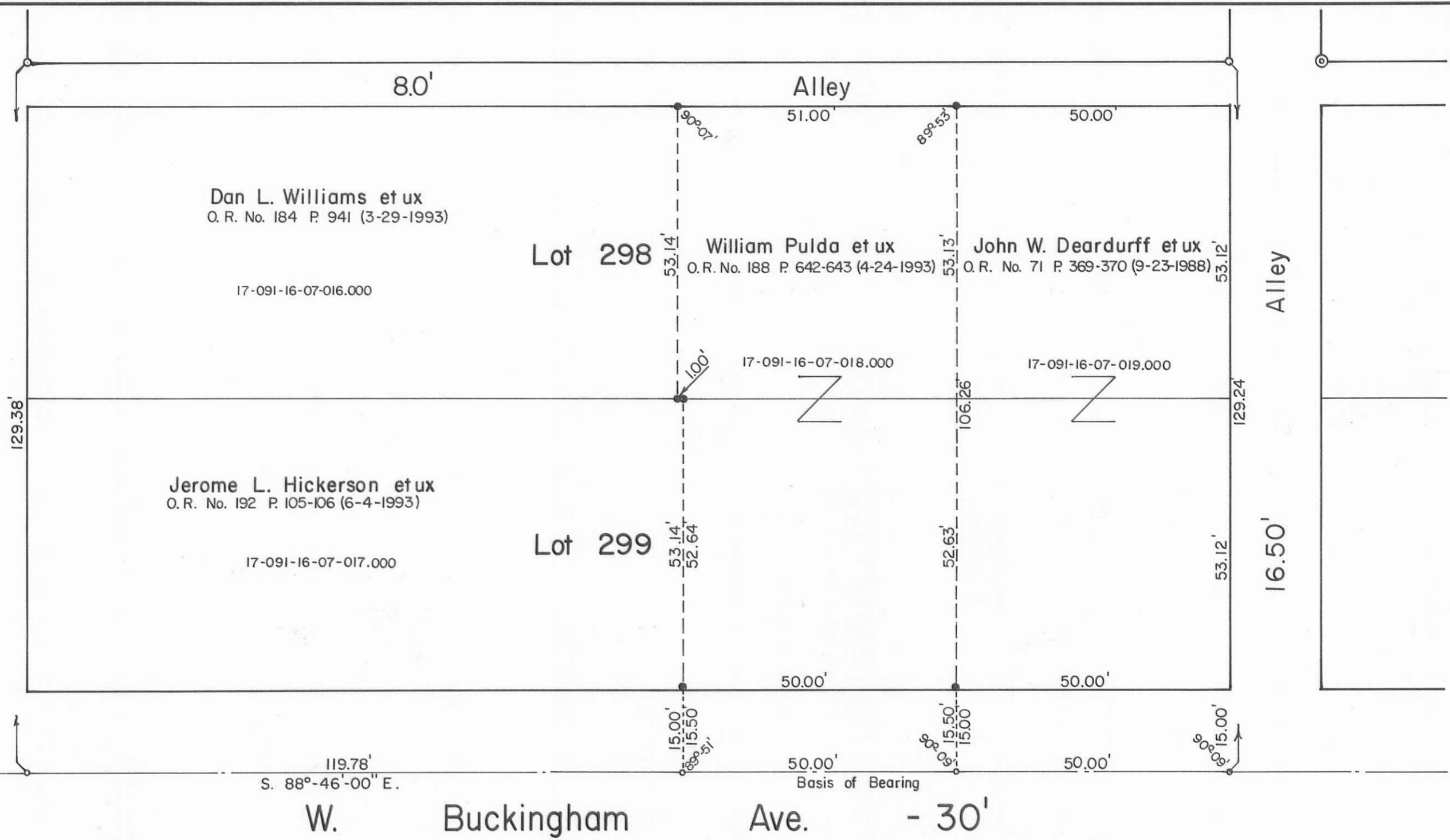




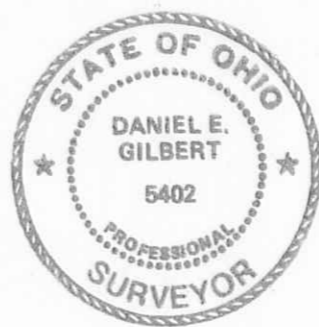
S. Detroit St. - 60'

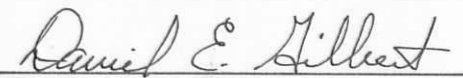
N. 1°-13'-00" E.



- SYMBOLS:
- - P. K. Nails Set.
 - ⊙ - 3/4" Iron Pipes Fd. or Reset.
 - ⊗ - 1 1/2" Iron Pipe Fd.
 - ⊠ - Stone Monument Fd.
 - - 5/8" x 30" Rebars Set.

INDEXED ON MAP
8833



PULDA SURVEY - Part of Lots No. 298-299 Slicer First Addition, City of Bellefontaine, Lake Township, Logan County, Ohio.		
SCALE: 1" = 20'	APPROVED BY:	DRAWN BY DEG
DATE: 9-20-1993		REVISED
 Daniel E. Gilbert, P.S. Reg. Sur. No. 5402		DRAWING NUMBER 093-042

S-672