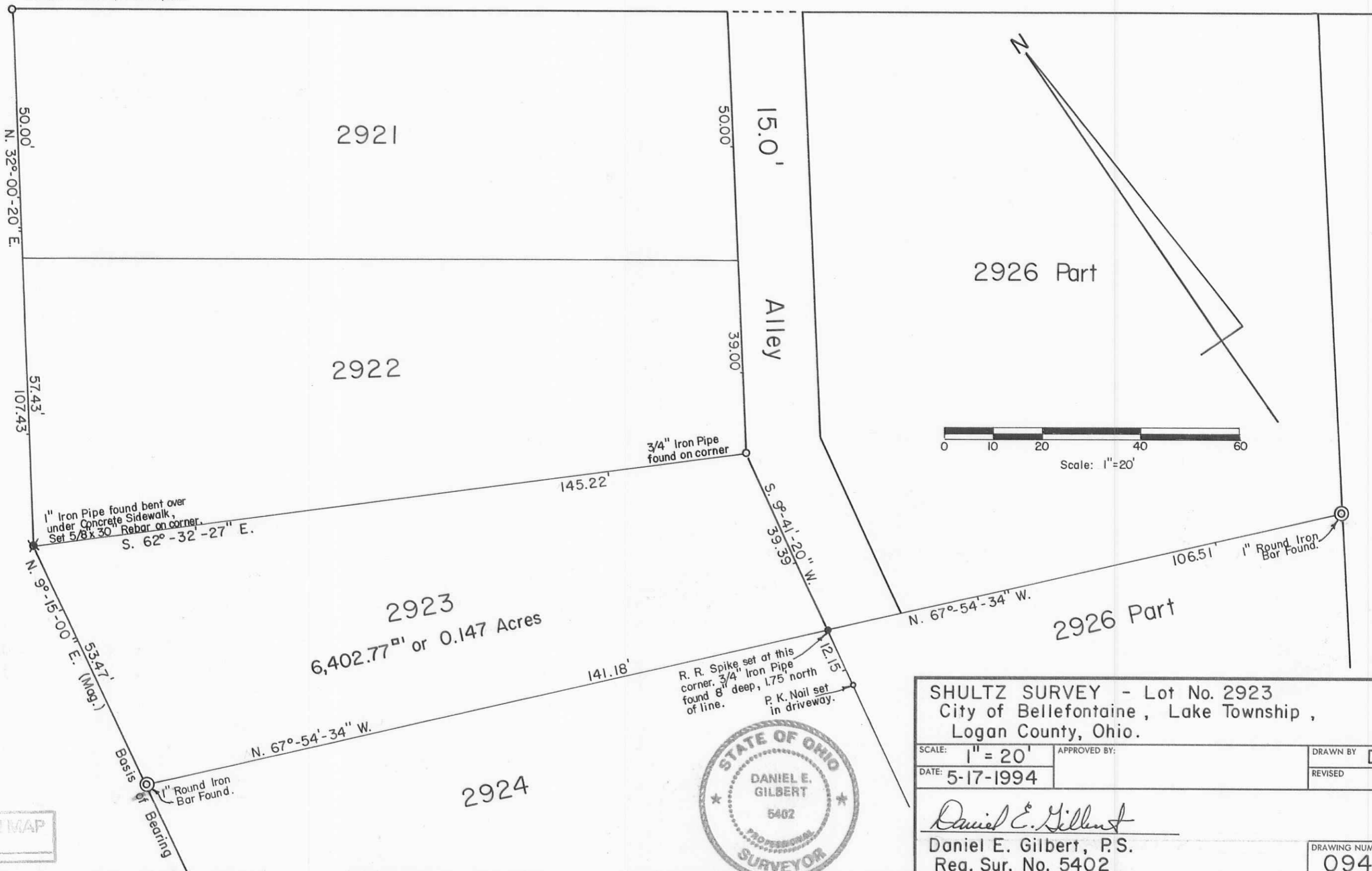


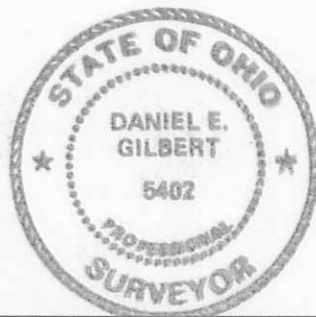
BEECH AVE. - 50'

N. MAIN ST. - 60'

1" Iron Pipe found bent,
Set new 1" Iron Pipe in its place.



INDEXED ON MAP
7064



SHULTZ SURVEY - Lot No. 2923 City of Bellefontaine, Lake Township, Logan County, Ohio.		
SCALE: 1" = 20'	APPROVED BY:	DRAWN BY DEG
DATE: 5-17-1994		REVISED
<i>Daniel E. Gilbert</i> Daniel E. Gilbert, P.S. Reg. Sur. No. 5402		DRAWING NUMBER 094-030

S-678