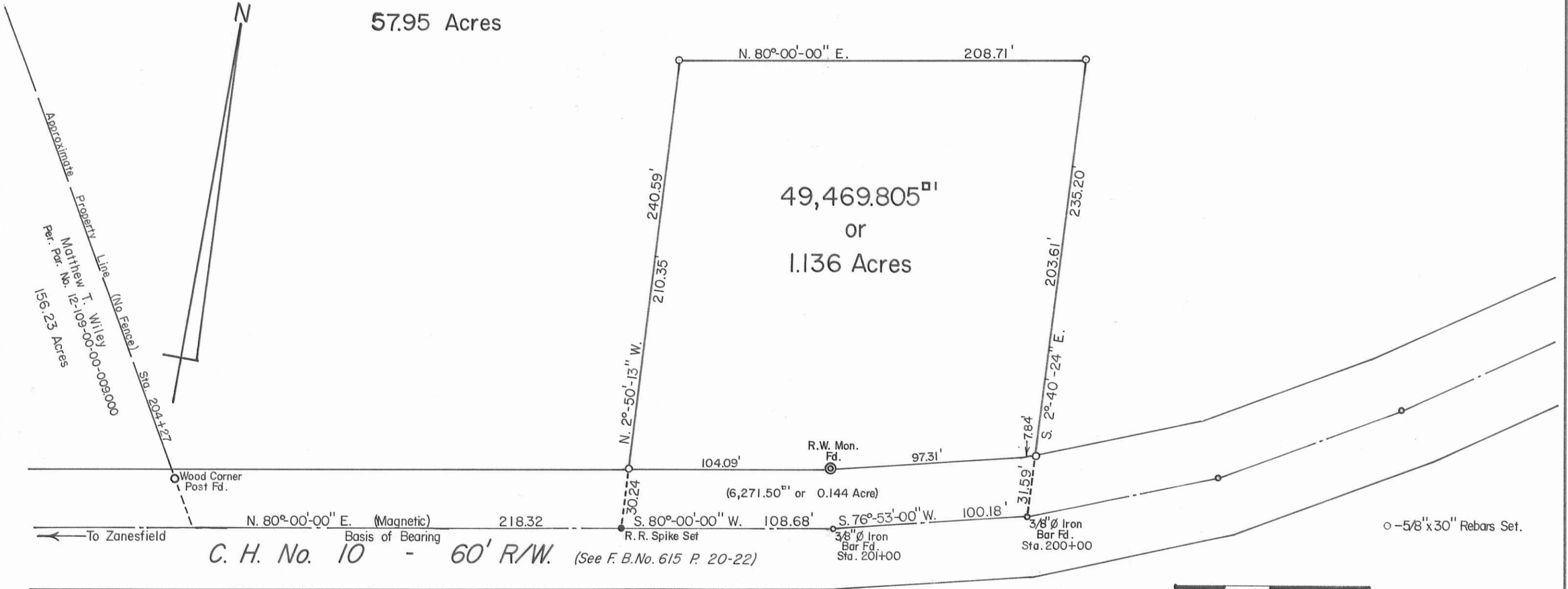


James A. Hollis and
 Ross W. Nelson, Jr.
 Vol. 367 P. 53-54 (10-6-1976)
 Per. Par. No. 12-109-00-00-010.000

57.95 Acres

49,469.805^{sq ft}
 or
 1.136 Acres



Approximate Property Line (No Fence)
 Matthew T. Wiley
 Per. Par. No. 12-109-00-00-009000
 156.23 Acres
 Sta. 204+27

N. 80°-00'-00" E. (Magnetic) 218.32
 Basis of Bearing
 C. H. No. 10 - 60' R/W. (See F. B. No. 615 P. 20-22)



INDEXED ON MAP
 8099



Nelson Survey, V.M.S. No. 4948-9423-9876
 Jefferson Township, Logan County, Ohio.

SCALE: 1" = 50'	APPROVED BY:	DRAWN BY DEG
DATE: 2-4-1991		REVISED

Daniel E. Gilbert
 Daniel E. Gilbert, P.S.
 Reg. Sur. No. 5402

DRAWING NUMBER
 091-003

S-701