

Max D. Gehle et al
 O.R. No. 50 P. 224 (9-21-1987)
 16-064-00-00-047,000
 26.780 Acres

Helen S. Griffith
 Vol. No. 305 P. 274 (10-29-1965)
 16-064-00-00-046.000
 41.870 Acres

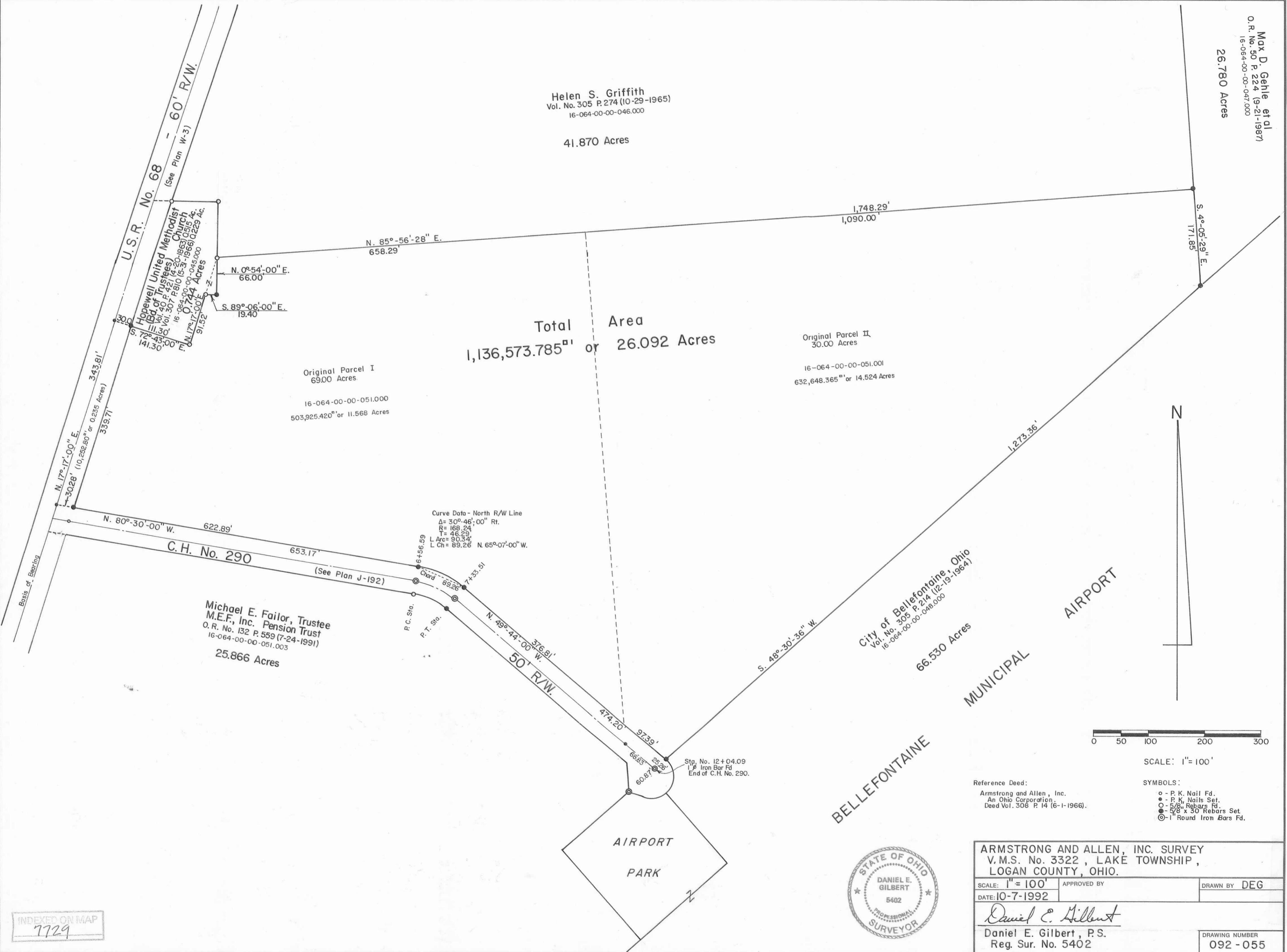
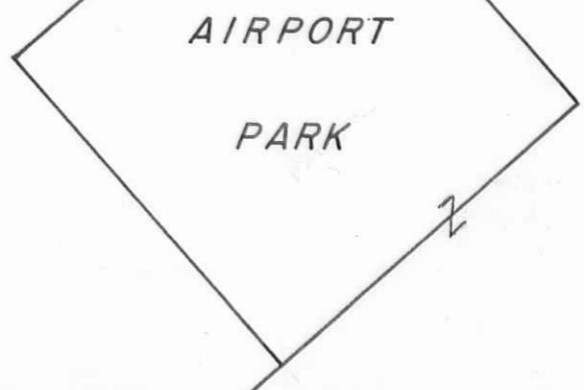
Total Area
 1,136,573.785^{sq ft} or 26.092 Acres

Original Parcel I
 69.00 Acres
 16-064-00-00-051.000
 503,925.420^{sq ft} or 11.568 Acres

Original Parcel II
 30.00 Acres
 16-064-00-00-051.001
 632,648.365^{sq ft} or 14.524 Acres

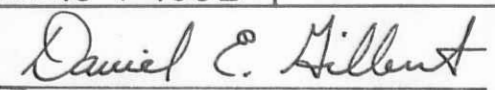
Michael E. Failor, Trustee
 M.E.F., Inc. Pension Trust
 O.R. No. 132 P. 559 (7-24-1991)
 16-064-00-00-051.003
 25.866 Acres

City of Bellefontaine, Ohio
 Vol. No. 305 P. 214 (12-19-1964)
 16-064-00-00-048.000
 66.530 Acres



Reference Deed:
 Armstrong and Allen, Inc.
 An Ohio Corporation
 Deed Vol. 308 P. 14 (6-1-1966).

- SYMBOLS:
- o - P. K. Nail Fd.
 - - P. K. Nails Set.
 - - 5/8" Rebars Fd.
 - - 3/8" x 30' Rebars Set.
 - ⊙ - 1" Round Iron Bars Fd.

ARMSTRONG AND ALLEN, INC. SURVEY V.M.S. No. 3322, LAKE TOWNSHIP, LOGAN COUNTY, OHIO.		
SCALE: 1" = 100'	APPROVED BY	DRAWN BY DEG
DATE: 10-7-1992		
 Daniel E. Gilbert, P.S. Reg. Sur. No. 5402		
DRAWING NUMBER		092-055

INDEXED ON MAP
 7729

S-712