

Mark L. Harshbarger  
Vol. No. 401 P. 422 (8-15-1983)  
18-121-00-00-106.000

1.430 Acres

Helen Hayes  
Vol. No. 273 P. 526 (5-8-1961)  
18-121-00-00-105.000

76.220 Acres

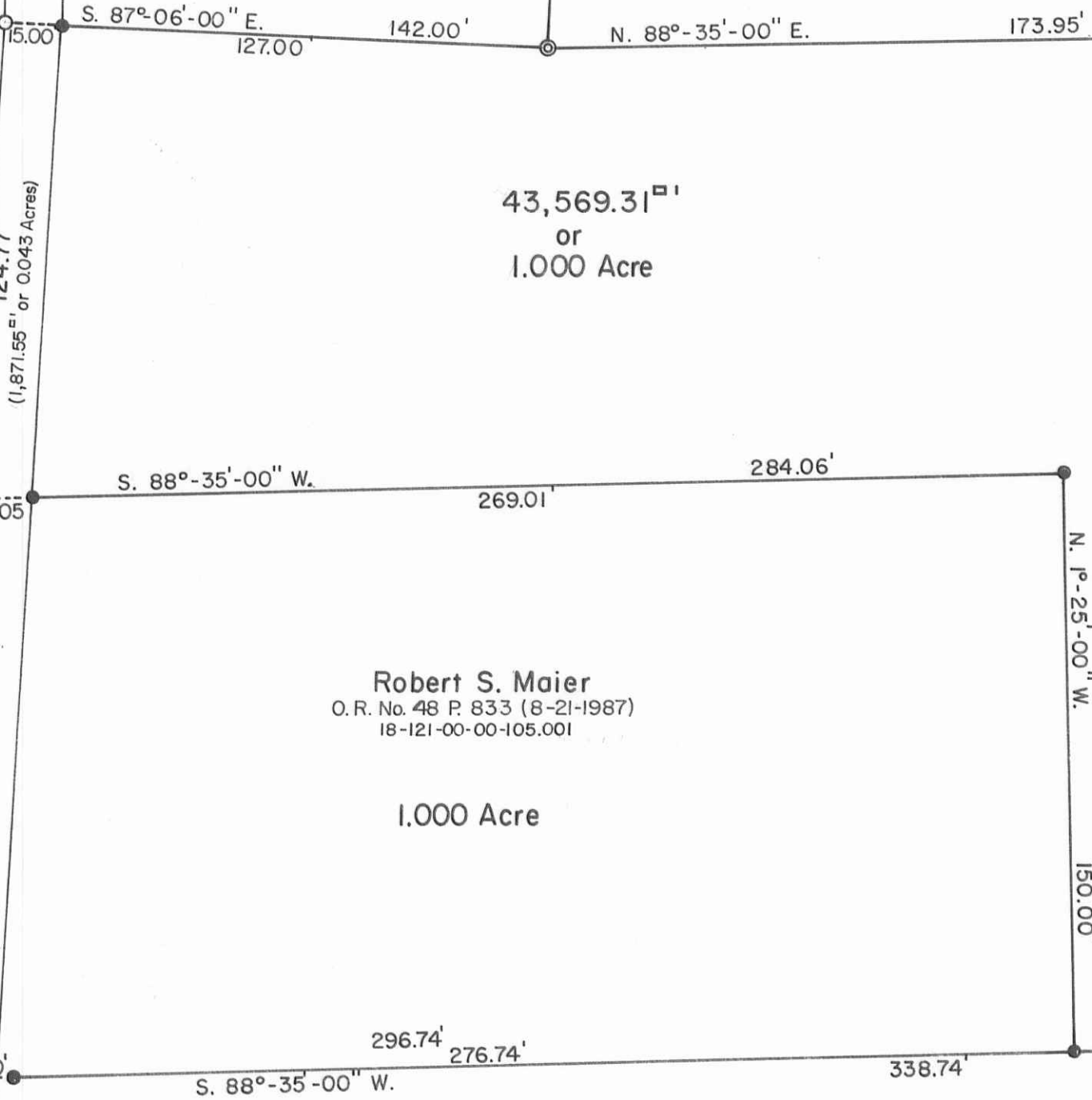
43,569.31<sup>sq</sup>  
or  
1.000 Acre

Robert S. Maier  
O.R. No. 48 P. 833 (8-21-1987)  
18-121-00-00-105.001

1.000 Acre

Kenneth Harr et al  
O.R. No. 96 P. 356 (11-10-1989)  
18-121-00-00-107.000

57.420 Acres



T.R. No. 188 - 30'  
(Basis of Bearing)

N. 0°24'-00" E.

N. 3°-25'-00" E.

15.00'

5.05'

20.00'

S. 87°-06'-00" E.  
127.00'

S. 88°-35'-00" W.

S. 88°-35'-00" W.

142.00'

269.01'

296.74'

N. 88°-35'-00" E.

284.06'

338.74'

173.95'

N. 1°-25'-00" W.

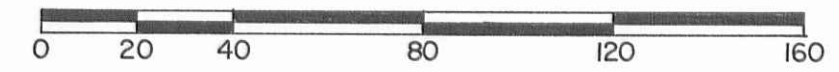
150.00'

42.00'

S. 1°-25'-00" E.

263.64'

275.30'  
124.77'  
(1,871.55<sup>sq</sup> or 0.043 Acres)



Scale: 1" = 40'

- SYMBOLS:
- o - R. R. Spike Fd.
  - O - 3/4" Iron Pipe Fd.
  - ⊙ - 1" Round Iron Bar Fd.
  - - 5/8" x 30" Rebars Set.

INDEXED ON MAP  
3273



Hayes (Kinnard) to Maier Survey Section No. 36 T.5 R.13 B.M.R.S. Liberty Township, Logan County, Ohio.	
SCALE: 1" = 40'	APPROVED BY:
DATE: 8-17-1994	DRAWN BY: DEG
REVISER:	
<i>Daniel E. Gilbert</i> Daniel E. Gilbert, P.S. Reg. Sur. No. 5402	
DRAWING NUMBER: 094-052	

S-731